

Summary

This profile provides an overview of water, sanitation and hygiene (WASH) infrastructure within Camp 16 in Ukhia, Cox's Bazar. Primary data for the sixth round was collected between 22 April - 12 May 2018.¹ Findings should be considered indicative only. The full camp dataset is available on [HDX](#).

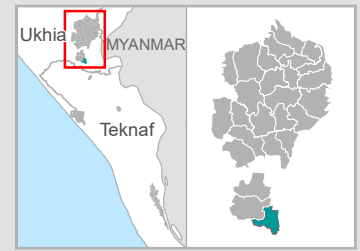
Site Overview

# of individuals:	21,665
# of households:	4,931
# of shelters:	3,172
# of individuals per shelter:	6.8

Key WASH Infrastructure

# of latrines: (% functional and safe ²):	460 (85%)
# of improved water sources: ³ (% functional):	190 (85%)
# of washrooms:	406

Location Map



Water Access

Three most commonly identified types of water points, by functionality:



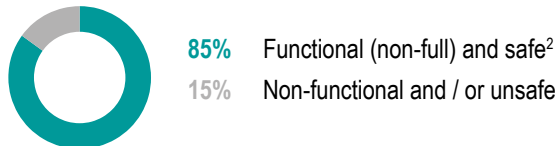
Key sectoral standards:

	Target	Current Round	Achievement
# of people per functional improved water source ³	max. 250	135	●
% of shelters with at least 1 functional improved water source ³ within 200m	100%	100%	●
% of functional improved water source with no latrine within 10m	100%	44%	●

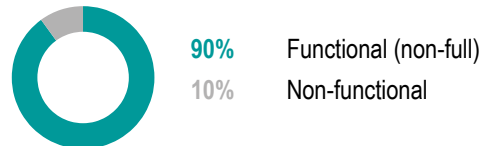
Sanitation

Latrine characteristics:

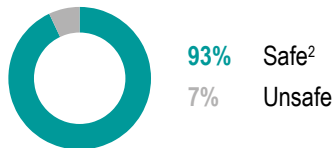
Functionality and safety



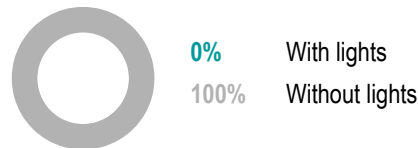
Functionality



Safety



Lighting



Key sectoral standards:

	Target	Current Round	Achievement
# of people per functional (non-full) and safe latrine ²	max. 20	56	●
# of people per functional (non-full) latrine	max. 20	53	●
# of people per safe latrine ²	max. 20	51	●
% of shelters with at least one functional and safe latrine ² block within 50m	100%	91%	●

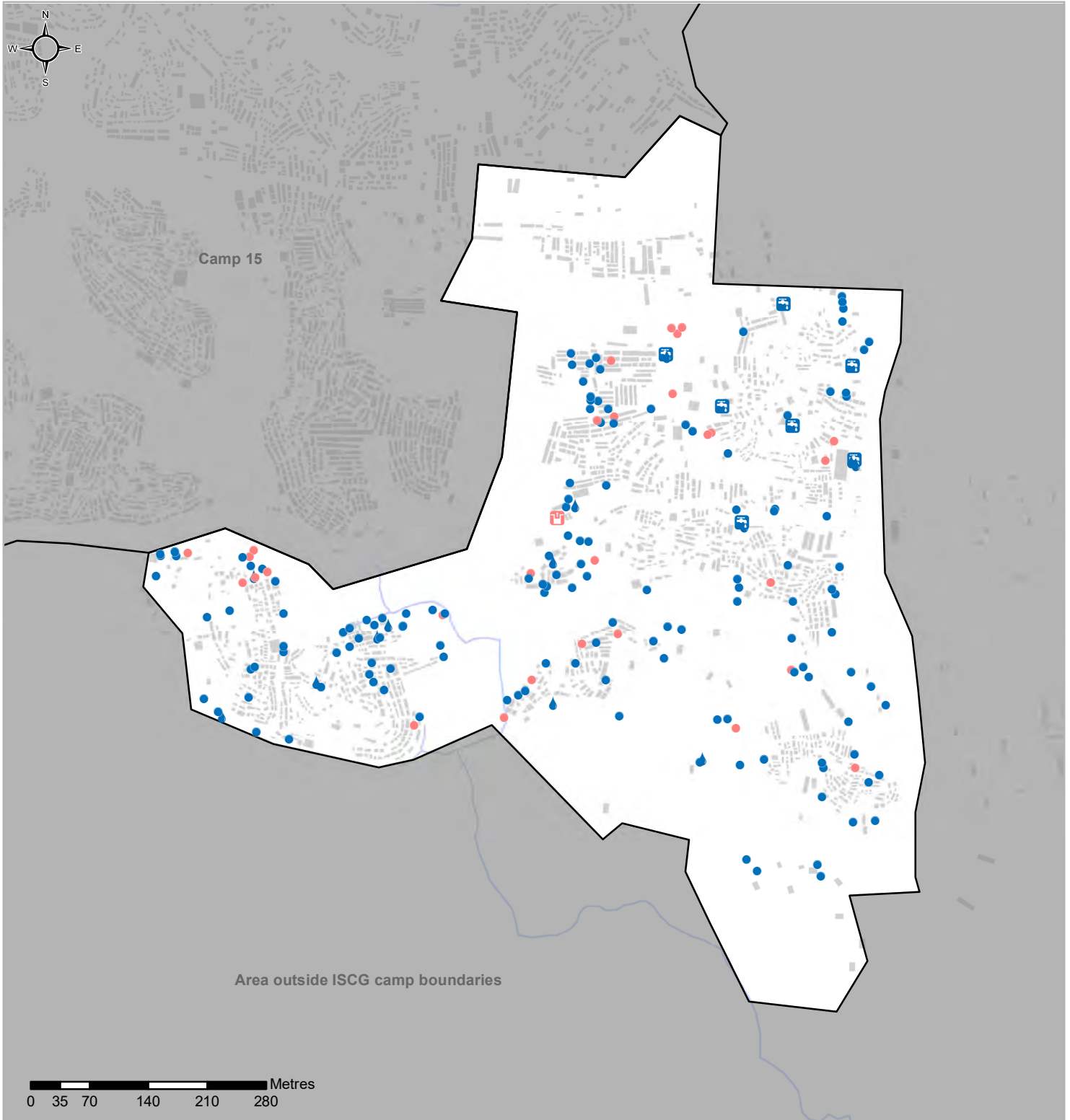
Targets based on long term WASH Sector Standards / Indicators for the Rohingya response, Sphere Minimum Standards as well as Department of Public Health and Environment (DPHE) Minimum Standards. ● Minimum standard/indicator reached, ● 75-99% of the minimum standard reached, or within 25% of minimum standard reached, ● 50-74% of the minimum standard reached, or within 26-50% of minimum standard reached, ● Less than 50% of minimum standard reached, or within greater than 50% of minimum standard reached.

¹ REACH enumerators conducted a full sweep of all sites and camps (as per boundaries defined by ISCG) and used a Kobo form to log all key infrastructure observed during this sweep.

² 'Safe' refers to fully covered latrines (i.e. a latrine with four walls, a roof and a lockable door).

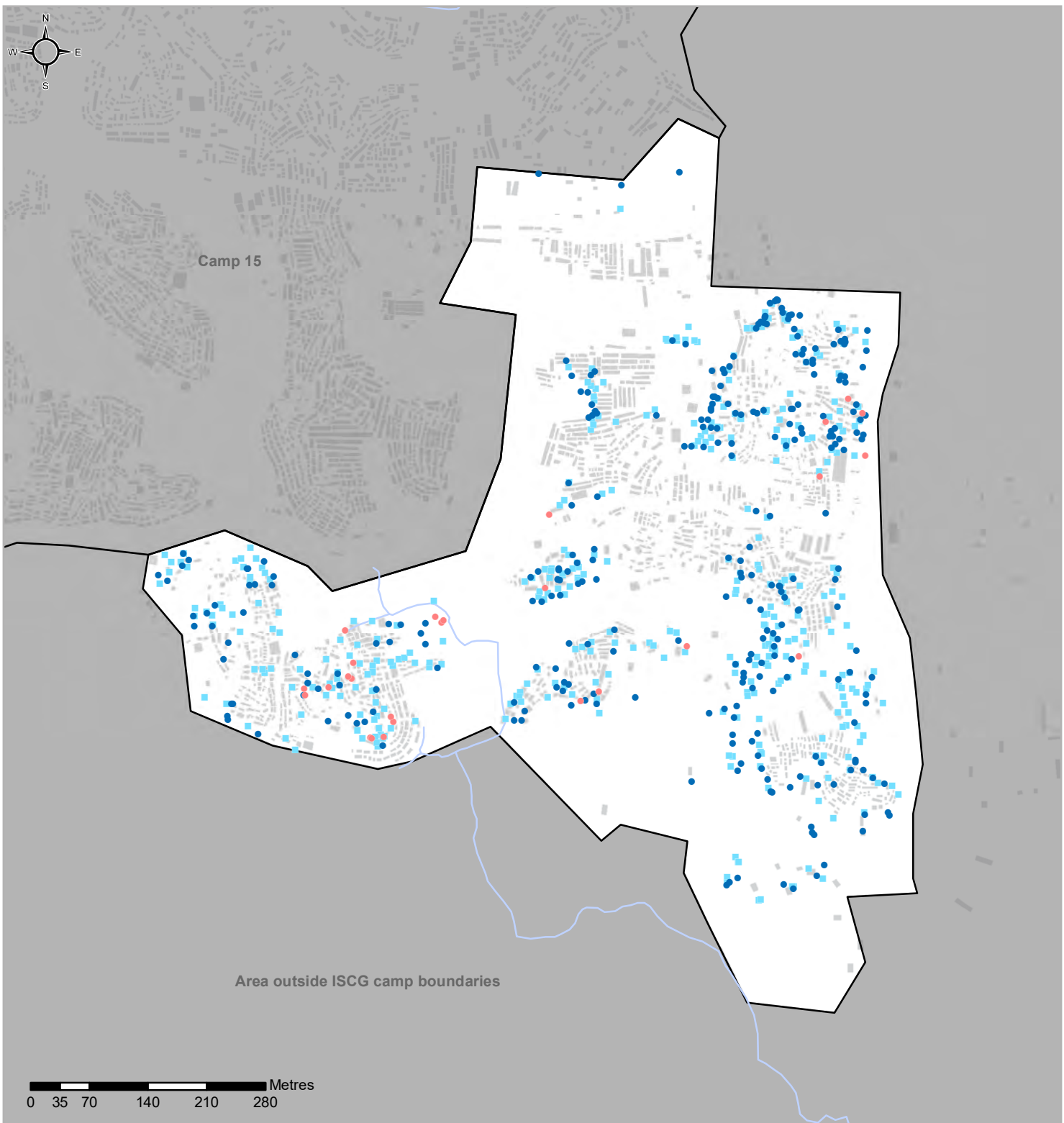
³ This includes handpumps / tubewells, tapstands and water tanks.



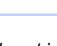
Water Access



	Functioning	Non-functioning		
Hand pump / tubewell	141	29	Shelter	
Tapstand	7	0	Camp boundary	
Well	0	1	River	
Water tank	13	0	<i>The boundaries and names used on this map do not imply official endorsement or acceptance by the United Nations</i>	
Unimproved water source	0	0		


Sanitation



	Functioning	Non-functioning		
Latrines	● 290	● 26	Shelter	
WASH rooms	■ 368		Camp boundary	
			River	

The boundaries and names used on this map do not imply official endorsement or acceptance by the United Nations

