



IDP Camp Profile - Al Nabi Younis

Baghdad, Iraq
January 2018

Management agency: Baghdad Governorate
Manager/Focal point: Hussein Shalash Taha
Registration actor: Baghdad Governorate

Summary

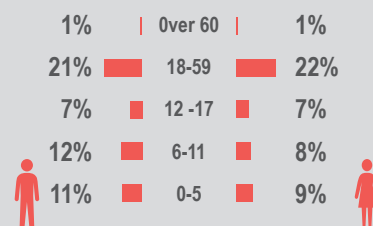
This profile provides an overview of conditions in Al Nabi Younis camp. Primary data was collected through household surveys on 21/12/2017. Households were randomly sampled to a 95% confidence level and a 10% margin of error, based on population figures provided by CCCM. In some cases, additional information from camp managers has been used to support findings.

Camp Overview

of individuals: 1280
of households: 208
Date opened: 8/10/2014
Occupied shelters: 200
Planned shelters: 392
Ongoing extension: no
Camp area: 99,291m²

Demographics

53% male / 6% female

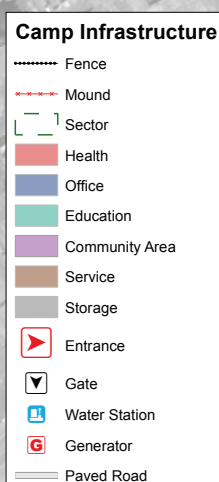


Location Map



IDP Camp Map - Al Nabi Younis

Lat. 33° 21' 46.314" N Long. 44° 39' 45.517" E



Sectoral Minimum Standards

		Target	Previous Round	Current Round	Achievement
CCCM	Average open area per household	Min. 30m ²	112 m ²	328 m ²	●
Protection	% of IDPs registered on an individual basis (MODM/DDM)	100%	98%	97%	●
WASH	# of persons per latrine	Max. 20	8	3	●
	# of persons per shower	Max. 20	8	3	●
	Frequency of solid waste disposal	Min. weekly	Every week	Every month	●
Shelter	Average area covered per person	Min. 3.5m ²	9.6 m ²	8 m ²	●
	Average number of individuals per shelter	Max. 5	6	5	●
Food	% households accessed Family Food Parcel or equivalent in previous month	100%	n/a*	58%	●
Health	Health services available on-site or within walking distance	Yes	yes	yes	●
Education	% of children aged 6-11 attending formal school	100%	69%	58%	●
	% of children aged 12-17 attending formal school	100%	77%	45%	●

*Method of calculation for food distribution has changed from previous rounds

Targets based on minimum standards agreed with the CCCM Cluster, Iraq. Findings based on household-level data, enumerator field observations, and camp management documentation
● Minimum standard reached, ● 50-99% of minimum standard reached, ● Less than 50% of minimum standard reached or not at all





IDP Camp Profile - Al Nabi Younis

Baghdad, Iraq
January 2018



Protection

Vulnerable groups

Pregnant / lactating women	0%	
Chronically ill individual(s)	6%	■
Disabled individual(s)	1%	I
Female headed households	10%	■

Intentions

53%	planned to move to a different location in next 3 months
9%	reported needing financial support to return and restart in order to return safely to their area of origin

Restrictions

100%	reported being able to leave the camp temporarily (e.g. to go to the market, for livelihood opportunities)
------	--

Documentation

6%	reported that one or more member is missing one or more documents
80%	reported that at least one of the members missing documents is an adult (18+)

Top three missing documents reported by those households*

PDS card	80%
ID card	40%
n/a	

Top two reasons for not attending education*

(of households with school-aged children not attending school)

Safety / security concerns	20%
Unable to register	20%



Access to information

Top three information sources regarding area of origin*

From others who visited	51%	■
Media	17%	■
Personally visited	17%	■

Top three information needs*

Livelihood sources	84%	■
Basic services	74%	■
Security situation	61%	■



Livelihoods

22% reported not having an income source

Top three income sources*

Unskilled labour	27%	■
Public security official	14%	■
Self employed	9%	■

Top three reported livelihood coping strategies*

None	70%	■
Spent savings	16%	■
Take on debt	9%	■



Priority Needs

Top 3 reported priority needs*

Food	85%	■
Education	58%	■
Employment	56%	■



WASH

Latrines

1%	reported access to public or communal latrines. Of those:
100%	reported latrines were lockable from the inside
100%	reported latrines had functioning lighting
100%	reported latrines were gender segregated

Top two most reported methods of waste removal

Collected	86%	■
Communal bin	12%	■

Primary drinking water sources

58%	indoor water source
22%	outdoor water point

Access to drinking water

21%	reported at least 24 consecutive hours without access to water in the month prior to the assessment
-----	---



Shelter

7% reported flooding in their shelter in the previous year

Top observed shelter type

Caravan	100%	■
n/a	of tents have secondary cover	

Top reported needed basic items*

Fuel storage	37%	■
Heating fuel	32%	■
Winter clothes	15%	■

Top reported needed winter item*

Kerosene heater	98%	■
-----------------	-----	---

Electricity access

Average number of hours of electricity per day	7
--	---



Food Security

Reported access to food assistance

58%	reported having received Public Distribution System (PDS) assistance in the month prior to the assessment
98%	reported access to a market within walking distance

Top two food consumption coping strategies*

Buy less expensive food	4%	■
Borrow food	2%	I

*Respondents could select multiple responses
**Insufficient sample size; fewer than five respondents





IDP Camp Profile - Al Salam

Baghdad, Iraq
January 2018

Management agency: Dr Nehru Muhammad Abdalkrim
Manager/Focal point: Thamer Hamad Ali
Registration actor: Dr Nehru Muhammad Abdalkrim

Summary

This profile provides an overview of conditions in Al Salam camp. Primary data was collected through household surveys on 19/12/2017. Households were randomly sampled to a 95% confidence level and a 10% margin of error, based on population figures provided by CCCM. In some cases, additional information from camp managers has been used to support findings.

Camp Overview

of individuals: 1313
of households: 310
Date opened: 2/9/2014
Occupied shelters: 750
Planned shelters: 750
Ongoing extension: no
Camp area: 195,147m²

Demographics

51% male / 49% female

1% | Over 60 | 1%
17% | 18-59 | 21%
8% | 12-17 | 8%
10% | 6-11 | 9%
14% | 0-5 | 10%

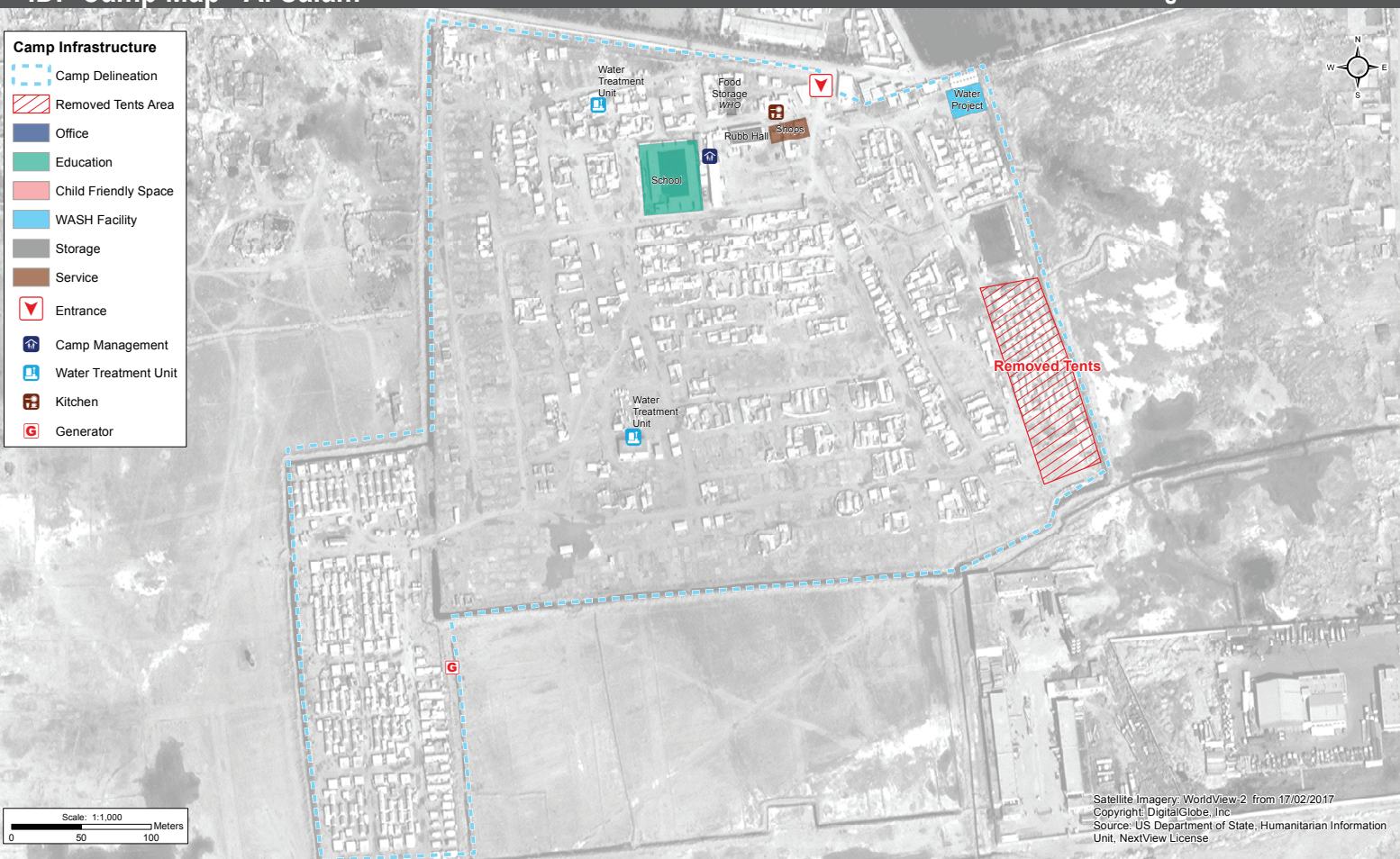
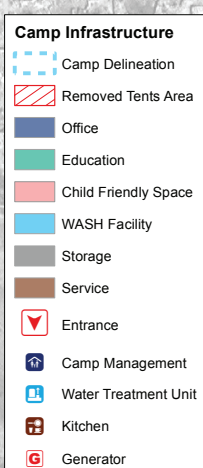


Location Map



IDP Camp Map - Al Salam

Lat. 33° 13' 34.521" N Long. 44° 22' 10.144" E



Sectoral Minimum Standards

		Target	Previous Round	Current Round	Achievement
CCCM	Average open area per household	Min. 30m ²	354 m ²	574 m ²	●
Protection	% of IDPs registered on an individual basis (MODM/DDM)	100%	93%	77%	●
WASH	# of persons per latrine	Max. 20	20	19	●
	# of persons per shower	Max. 20	20	19	●
	Frequency of solid waste disposal	Min. weekly	Every week	Every week	●
Shelter	Average area covered per person	Min. 3.5m ²	4.6 m ²	4.6 m ²	●
	Average number of individuals per shelter	Max. 5	7	6	●
Food	% households accessed Family Food Parcel or equivalent in previous month	100%	n/a*	27%	●
Health	Health services available on-site or within walking distance	Yes	yes	yes	●
Education	% of children aged 6-11 attending formal school	100%	71%	74%	●
	% of children aged 12-17 attending formal school	100%	78%	47%	●

*Method of calculation for food distribution has changed from previous rounds

Targets based on minimum standards agreed with the CCCM Cluster, Iraq. Findings based on household-level data, enumerator field observations, and camp management documentation
● Minimum standard reached, ● 50-99% of minimum standard reached, ● Less than 50% of minimum standard reached or not at all





IDP Camp Profile - Al Salam

Baghdad, Iraq
January 2018



Protection

Vulnerable groups

Pregnant / lactating women	1%	I
Chronically ill individual(s)	4%	I
Disabled individual(s)	2%	I
Female headed households	39%	

Intentions

28%	planned to move to a different location in next 3 months
13%	reported needing financial support to return and restart in order to return safely to their area of origin

Restrictions

100%	reported being able to leave the camp temporarily (e.g. to go to the market, for livelihood opportunities)
------	--

Documentation

12%	reported that one or more member is missing one or more documents
18%	reported that at least one of the members missing documents is an adult (18+)

Top three missing documents reported by those households*

Citizenship certificate	82%
ID card	45%
ration card	18%

Top two reasons for not attending education*

(of households with school-aged children not attending school)

n/a	n/a
n/a	n/a



Access to information

Top three information sources regarding area of origin*

From others who visited	65%	
Media	16%	
Personally visited	14%	

Top three information needs*

Basic services	80%	
Security situation	74%	
Livelihood sources	71%	



Livelihoods

24% reported not having an income source

Top three income sources*

Unskilled labour	38%	
Humanitarian aid	14%	
Unskilled agricultural labour	10%	

Top three reported livelihood coping strategies*

None	59%	
Spent savings	19%	
Take on debt	11%	



Priority Needs

Top 3 reported priority needs*

Food	94%	
Employment	47%	
Medical care	40%	



WASH

Latrines

53%	reported access to public or communal latrines. Of those:
87%	reported latrines were lockable from the inside
85%	reported latrines had functioning lighting
77%	reported latrines were gender segregated

Top two most reported methods of waste removal

Rubbish pit	51%	
Burnt	39%	

Primary drinking water sources

52%	outdoor water point
31%	indoor water point

Access to drinking water

33%	reported at least 24 consecutive hours without access to water in the month prior to the assessment
-----	---



Shelter

53% reported flooding in their shelter in the previous year

Top observed shelter type

Tent **89%**
64% of tents have secondary cover

Top reported needed basic items*

Heating fuel	34%	
Fuel storage	34%	
Blankets	20%	

Top reported needed winter item*

Kerosene heater	99%	
-----------------	-----	--

Electricity access

Average number of hours of electricity per day	11
--	----



Food Security

Reported access to food assistance

27%	reported having received Public Distribution System (PDS) assistance in the month prior to the assessment
100%	reported access to a market within walking distance

Top two food consumption coping strategies*

Borrow food	6%	
Buy less expensive food	2%	

*Respondents could select multiple responses
**Insufficient sample size; fewer than five respondents





IDP Camp Profile - Al Amal

Baghdad, Iraq
January 2018

Management agency: Al Amal Al-Manshoo'd Organisation
Manager/Focal point: Raad Mohammed Saleh
Registration actor: Al Amal Al-Manshoo'd Organisation

Summary

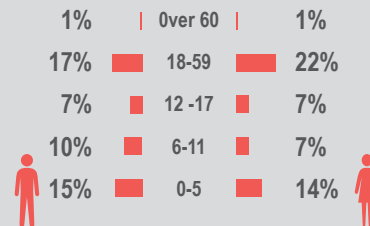
This profile provides an overview of conditions in Al Amal camp. Primary data was collected through household surveys on 9/1/2018. Households were randomly sampled to a 95% confidence level and a 10% margin of error, based on population figures provided by CCCM. In some cases, additional information from camp managers has been used to support findings.

Camp Overview

of individuals: 530
of households: 128
Date opened: 5/5/2016
Occupied shelters: 128
Planned shelters: 275
Ongoing extension: no
Camp area: 26,583m²

Demographics

50% male / 50% female



Location Map



IDP Camp Map - Al Amal

Lat. 33° 17' 54.773" N Long. 44° 1' 19.214" E



Sectoral Minimum Standards

		Target	Previous Round	Current Round	Achievement
CCCM	Average open area per household	Min. 30m ²	n/a	149 m ²	●
Protection	% of IDPs registered on an individual basis (MODM/DDM)	100%	n/a	100%	●
WASH	# of persons per latrine	Max. 20	n/a	3	●
	# of persons per shower	Max. 20	n/a	3	●
	Frequency of solid waste disposal	Min. weekly	n/a	Every week	●
Shelter	Average area covered per person	Min. 3.5m ²	n/a	6.8 m ²	●
	Average number of individuals per shelter	Max. 5	n/a	5	●
Food	% households accessed Family Food Parcel or equivalent in previous month	100%	n/a*	53%	●
Health	Health services available on-site or within walking distance	Yes	n/a	yes	●
Education	% of children aged 6-11 attending formal school	100%	n/a	62%	●
	% of children aged 12-17 attending formal school	100%	n/a	36%	●

*Method of calculation for food distribution has changed from previous rounds

Targets based on minimum standards agreed with the CCCM Cluster, Iraq. Findings based on household-level data, enumerator field observations, and camp management documentation
● Minimum standard reached, ● 50-99% of minimum standard reached, ● Less than 50% of minimum standard reached or not at all





IDP Camp Profile - Al Amal

Baghdad, Iraq
January 2018



Protection

Vulnerable groups

Pregnant / lactating women	2%	
Chronically ill individual(s)	8%	■
Disabled individual(s)	1%	
Female headed households	24%	■

Intentions

52%	planned to move to a different location in next 3 months
14%	reported needing financial support to return and restart in order to return safely to their area of origin

Restrictions

100%	reported being able to leave the camp temporarily (e.g. to go to the market, for livelihood opportunities)
------	--

Documentation

0%	reported that one or more member is missing one or more documents
n/a	reported that at least one of the members missing documents is an adult (18+)

Top three missing documents reported by those households*

n/a
n/a
n/a

Top two reasons for not attending education*

(of households with school-aged children not attending school)

Missed too much to make up	21%
Unable to afford education	7%



Access to information

Top three information sources regarding area of origin*

From others who visited	65%	■
Personally visited	15%	■
Media	10%	■

Top three information needs*

Security situation	92%	■
Basic services	66%	■
Livelihood sources	61%	■



Livelihoods

33% reported not having an income source

Top three income sources*

Unskilled labour	36%	■
Self employed	16%	■
Humanitarian aid	9%	■

Top three reported livelihood coping strategies*

None	60%	■
Spent savings	21%	■
Support from friends	14%	■



Priority Needs

Top 3 reported priority needs*

Food	97%	■
Employment	64%	■
Education	38%	■



WASH

Latrines

22%	reported access to public or communal latrines. Of those:
100%	reported latrines were lockable from the inside
54%	reported latrines had functioning lighting
100%	reported latrines were gender segregated

Top two most reported methods of waste removal

Collected	100%	■
n/a	n/a	

Primary drinking water sources

47%	bottled water from the shop
28%	indoor water point

Access to drinking water

10%	reported at least 24 consecutive hours without access to water in the month prior to the assessment
-----	---



Shelter

12% reported flooding in their shelter in the previous year

Top observed shelter type

Caravan	83%	■
n/a	of tents have secondary cover	

Top reported needed basic items*

Heating fuel	17%	■
Fuel storage	17%	■
Winter clothes	14%	■

Top reported needed winter item*

Kerosene heater	86%	■
-----------------	-----	---

Electricity access

Average number of hours of electricity per day 8



Food Security

Reported access to food assistance

53%	reported having received Public Distribution System (PDS) assistance in the month prior to the assessment
100%	reported access to a market within walking distance

Top two food consumption coping strategies*

Buy less expensive food	10%	■
Borrow food	5%	■

*Respondents could select multiple responses

**Insufficient sample size; fewer than five respondents





IDP Camp Profile - Shooting Camp

Baghdad, Iraq
January 2018

Management agency: Baghdad governorate
Manager/Focal point: Omar Ahmed Ramadan
Registration actor: Baghdad Governorate

Summary

This profile provides an overview of conditions in Shooting Camp camp. Primary data was collected through household surveys on 9/1/2018. Households were randomly sampled to a 95% confidence level and a 10% margin of error, based on population figures provided by CCCM. In some cases, additional information from camp managers has been used to support findings.

Camp Overview

of individuals: 1173
of households: 224
Date opened: 11/25/2014
Occupied shelters: 224
Planned shelters: 563
Ongoing extension: no
Camp area: 112,865m²

Demographics

49% male / 51% female

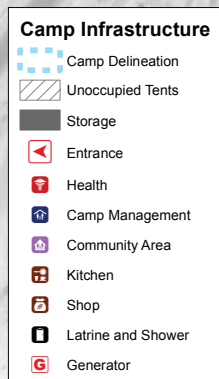
1%	Over 60	1%
15%	18-59	19%
11%	12-17	8%
8%	6-11	9%
14%	0-5	14%

Location Map



IDP Camp Map - Shooting Camp

Lat. 33° 29' 2.87" N Long. 44° 11' 21.9" E



Satellite Imagery: WorldView-2 from 22/7/2016
Copyright: DigitalGlobe, Inc.
Source: US Department of State, Humanitarian Information Unit,
NextView License

Sectoral Minimum Standards

		Target	Previous Round	Current Round	Achievement
CCCM	Average open area per household	Min. 30m ²	807 m ²	118 m ²	●
Protection	% of IDPs registered on an individual basis (MODM/DDM)	100%	97%	96%	●
WASH	# of persons per latrine	Max. 20	3	8	●
	# of persons per shower	Max. 20	3	8	●
	Frequency of solid waste disposal	Min. weekly	Every week	Every month	●
Shelter	Average area covered per person	Min. 3.5m ²	9.3 m ²	6 m ²	●
	Average number of individuals per shelter	Max. 5	7	6	●
Food	% households accessed Family Food Parcel or equivalent in previous month	100%	n/a*	38%	●
Health	Health services available on-site or within walking distance	Yes	yes	yes	●
Education	% of children aged 6-11 attending formal school	100%	62%	63%	●
	% of children aged 12-17 attending formal school	100%	65%	43%	●

*Method of calculation for food distribution has changed from previous rounds

Targets based on minimum standards agreed with the CCCM Cluster, Iraq. Findings based on household-level data, enumerator field observations, and camp management documentation
● Minimum standard reached, ● 50-99% of minimum standard reached, ● Less than 50% of minimum standard reached or not at all





IDP Camp Profile - Shooting Camp

Baghdad, Iraq
January 2018



Protection

Vulnerable groups

Pregnant / lactating women	2%	
Chronically ill individual(s)	6%	
Disabled individual(s)	0%	
Female headed households	20%	

Intentions

39%	planned to move to a different location in next 3 months
15%	reported needing financial support to return and restart in order to return safely to their area of origin

Restrictions

100%	reported being able to leave the camp temporarily (e.g. to go to the market, for livelihood opportunities)
------	--

Documentation

1%	reported that one or more member is missing one or more documents
n/a**	reported that at least one of the members missing documents is an adult (18+)

Top three missing documents reported by those households*

n/a**
n/a**
n/a**

Top two reasons for not attending education*

(of households with school-aged children not attending school)

School is too far away	36%
Unable to afford education	36%



Access to information

Top three information sources regarding area of origin*

From others who visited	54%	
Personally visited	15%	
Media	9%	

Top three information needs*

Basic services	81%	
Livelihood sources	78%	
Security situation	62%	



Livelihoods

39% reported not having an income source

Top three income sources*

Unskilled labour	19%	
Self employed	15%	
Unskilled agricultural labour	9%	

Top three reported livelihood coping strategies*

None	66%	
Spent savings	20%	
Take on debt	11%	



Priority Needs

Top 3 reported priority needs*

Food	91%	
Employment	73%	
Education	47%	



WASH

Latrines

100%	reported access to public or communal latrines. Of those:
100%	reported latrines were lockable from the inside
91%	reported latrines had functioning lighting
100%	reported latrines were gender segregated

Top two most reported methods of waste removal

Collected	92%	
Thrown in street	8%	

Primary drinking water sources

91%	outdoor water point
7%	bottled water from the shop

Access to drinking water

9%	reported at least 24 consecutive hours without access to water in the month prior to the assessment
----	---



Shelter

12% reported flooding in their shelter in the previous year

Top observed shelter type

Family Residential Unit	64%	<div></div>
	n/a	of tents have secondary cover

Top reported needed basic items*

Heating fuel	16%	
Heating fuel	14%	
Winter clothes	12%	

Top reported needed winter item*

Kerosene heater	82%	
-----------------	-----	--

Electricity access

Average number of hours of electricity per day	8
--	---



Food Security

Reported access to food assistance

38%	reported having received Public Distribution System (PDS) assistance in the month prior to the assessment
100%	reported access to a market within walking distance

Top two food consumption coping strategies*

Buy less expensive food	11%	
Borrow food	3%	

*Respondents could select multiple responses
**Insufficient sample size; fewer than five respondents





IDP Camp Profile - Uwayrij

Baghdad, Iraq
January 2018

Management agency: Baghdad governorate
Manager/Focal point: Mayada Mahmoud Hammad
Registration actor: Camp Management

Summary

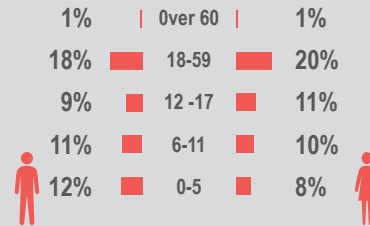
This profile provides an overview of conditions in Uwayrij camp. Primary data was collected through household surveys on 20/12/2017. Households were randomly sampled to a 95% confidence level and a 10% margin of error, based on population figures provided by CCCM. In some cases, additional information from camp managers has been used to support findings.

Camp Overview

of individuals: 1500
of households: 334
Date opened: 9/15/2014
Occupied shelters: 240
Planned shelters: 240
Ongoing extension: no
Camp area: 54,765m²

Demographics

50% male / 50% female



Location Map



IDP Camp Map - Uwayrij

Lat. 33° 10' 18.052" N Long. 44° 21' 50.699" E

Satellite Imagery: WorldView-2 from 13/10/2017
Copyright: DigitalGlobe
Source: US Department of State, Humanitarian Information Unit, NextView License



Camp Infrastructure

- Camp Delineation
- Entrance
- Camp Management
- Water Filtration System
- Generator

Sectoral Minimum Standards

		Target	Previous Round	Current Round	Achievement
CCCM	Average open area per household	Min. 30m ²	n/a	145 m ²	●
Protection	% of IDPs registered on an individual basis (MODM/DDM)	100%	n/a	83%	●
WASH	# of persons per latrine	Max. 20	n/a	6	●
	# of persons per shower	Max. 20	n/a	6	●
	Frequency of solid waste disposal	Min. weekly	n/a	Every month	●
Shelter	Average area covered per person	Min. 3.5m ²	n/a	6.8 m ²	●
	Average number of individuals per shelter	Max. 5	n/a	6	●
Food	% households accessed Family Food Parcel or equivalent in previous month	100%	n/a*	19%	●
Health	Health services available on-site or within walking distance	Yes	n/a	yes	●
Education	% of children aged 6-11 attending formal school	100%	n/a	71%	●
	% of children aged 12-17 attending formal school	100%	n/a	58%	●

*Method of calculation for food distribution has changed from previous rounds

Targets based on minimum standards agreed with the CCCM Cluster, Iraq. Findings based on household-level data, enumerator field observations, and camp management documentation
● Minimum standard reached, ● 50-99% of minimum standard reached, ● Less than 50% of minimum standard reached or not at all





IDP Camp Profile - Uwayrij

Baghdad, Iraq
January 2018



Protection

Vulnerable groups

Pregnant / lactating women	1%	
Chronically ill individual(s)	3%	
Disabled individual(s)	1%	
Female headed households	24%	

Intentions

25%	planned to move to a different location in next 3 months
10%	reported needing financial support to return and restart in order to return safely to their area of origin

Restrictions

99%	reported being able to leave the camp temporarily (e.g. to go to the market, for livelihood opportunities)
-----	--

Documentation

4%	reported that one or more member is missing one or more documents
n/a**	reported that at least one of the members missing documents is an adult (18+)

Top three missing documents reported by those households*

n/a**

n/a**

n/a**

Top two reasons for not attending education*

(of households with school-aged children not attending school)

Safety / security concerns	50%
No school available	25%



Access to information

Top three information sources regarding area of origin*

From others who visited	63%	
Media	22%	
Personally visited	12%	

Top three information needs*

Security situation	84%	
Basic services	73%	
Livelihood sources	65%	



Livelihoods

23% reported not having an income source

Top three income sources*

Unskilled labour	35%	
Humanitarian aid	19%	
Government aid	13%	

Top three reported livelihood coping strategies*

None	69%	
Spent savings	19%	
Take on debt	7%	



Priority Needs

Top 3 reported priority needs*

Food	88%	
Education	55%	
Medical care	51%	



WASH

Latrines

0%	reported access to public or communal latrines. Of those:
n/a	reported latrines were lockable from the inside
n/a	reported latrines had functioning lighting
n/a	reported latrines were gender segregated

Top two most reported methods of waste removal

Collected	92%	
Communal bin	8%	

Primary drinking water sources

48%	indoor water source
35%	outdoor water point

Access to drinking water

17%	reported at least 24 consecutive hours without access to water in the month prior to the assessment
-----	---



Shelter

16% reported flooding in their shelter in the previous year

Top observed shelter type

Caravan	100%	<div></div>
	n/a	of tents have secondary cover

Top reported needed basic items*

Heating fuel	42%	
Fuel storage	39%	
Cooking fuel	17%	

Top reported needed winter item*

Kerosene heater	96%	
-----------------	-----	--

Electricity access

Average number of hours of electricity per day 7



Food Security

Reported access to food assistance

19%	reported having received Public Distribution System (PDS) assistance in the month prior to the assessment
100%	reported access to a market within walking distance

Top two food consumption coping strategies*

Borrow food	2%	
Reduce food intake for males	1%	

*Respondents could select multiple responses
**Insufficient sample size; fewer than five respondents





IDP Camp Profile - Zayona

Baghdad, Iraq
January 2018

Management agency: Baghdad governorate
Manager/Focal point: Aduar Ruail Dawood
Registration actor: other

Summary

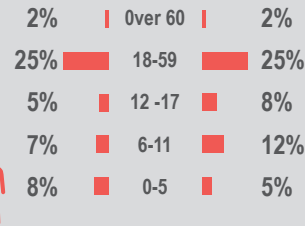
This profile provides an overview of conditions in Zayona camp. Primary data was collected through household surveys on 23/12/2017. Households were randomly sampled to a 95% confidence level and a 10% margin of error, based on population figures provided by CCCM. In some cases, additional information from camp managers has been used to support findings.

Camp Overview

of individuals: 393
of households: 130
Date opened: 8/11/2015
Occupied shelters: 121
Planned shelters: 139
Ongoing extension: no
Camp area: 14,742m²

Demographics

47% male / 53% female



Location Map



IDP Camp Map - Zayona

Lat. 33° 18' 59.357" N Long. 44° 26' 42.749" E

Camp Infrastructure

- Camp Delineation
- Entrance
- Camp Management
- Generator



Satellite Imagery: Pleiades from 27/10/2017
Copyright: CNES
Source: Airbus DS

Scale: 1:300
0 25 50 Meters

Sectoral Minimum Standards

		Target	Previous Round	Current Round	Achievement
CCCM	Average open area per household	Min. 30m ²	n/a	85 m ²	●
Protection	% of IDPs registered on an individual basis (MODM/DDM)	100%	n/a	93%	●
WASH	# of persons per latrine	Max. 20	n/a	3	●
	# of persons per shower	Max. 20	n/a	3	●
	Frequency of solid waste disposal	Min. weekly	n/a	Every week	●
Shelter	Average area covered per person	Min. 3.5m ²	n/a	9 m ²	●
	Average number of individuals per shelter	Max. 5	n/a	4	●
Food	% households accessed Family Food Parcel or equivalent in previous month	100%	n/a*	62%	●
Health	Health services available on-site or within walking distance	Yes	n/a	yes	●
Education	% of children aged 6-11 attending formal school	100%	n/a	86%	●
	% of children aged 12-17 attending formal school	100%	n/a	76%	●

*Method of calculation for food distribution has changed from previous rounds

Targets based on minimum standards agreed with the CCCM Cluster, Iraq. Findings based on household-level data, enumerator field observations, and camp management documentation
● Minimum standard reached, ● 50-99% of minimum standard reached, ● Less than 50% of minimum standard reached or not at all





IDP Camp Profile - Zayona

Baghdad, Iraq
January 2018



Protection

Vulnerable groups

Pregnant / lactating women	0%	
Chronically ill individual(s)	7%	■
Disabled individual(s)	0%	
Female headed households	8%	■

Intentions

18%	planned to move to a different location in next 3 months
15%	reported needing financial support to return and restart in order to return safely to their area of origin

Restrictions

100%	reported being able to leave the camp temporarily (e.g. to go to the market, for livelihood opportunities)
------	--

Documentation

2%	reported that one or more member is missing one or more documents
n/a**	reported that at least one of the members missing documents is an adult (18+)

Top three missing documents reported by those households*

n/a**
n/a**
n/a**

Top two reasons for not attending education*

(of households with school-aged children not attending school)

Child is disabled	25%
Unable to register	25%



Access to information

Top three information sources regarding area of origin*

From others who visited	76%	■
Media	18%	■
Personally visited	6%	■

Top three information needs*

Livelihood sources	90%	■
Basic services	75%	■
Security situation	72%	■



Livelihoods

25% reported not having an income source

Top three income sources*

Unskilled labour	25%	■
Self employed	15%	■
Humanitarian aid	12%	■

Top three reported livelihood coping strategies*

None	85%	■
Charitable donations	8%	■
Take on debt	8%	■



Priority Needs

Top 3 reported priority needs*

Food	88%	■
Employment	58%	■
Education	53%	■



WASH

Latrines

0%	reported access to public or communal latrines. Of those:
n/a	reported latrines were lockable from the inside
n/a	reported latrines had functioning lighting
n/a	reported latrines were gender segregated

Top two most reported methods of waste removal

Collected	90%	■
Communal bin	10%	■

Primary drinking water sources

72%	indoor water source
25%	bottled water from the shop

Access to drinking water

13%	reported at least 24 consecutive hours without access to water in the month prior to the assessment
-----	---



Shelter

2% reported flooding in their shelter in the previous year

Top observed shelter type

Caravan	100%	<div></div>
n/a	of tents have secondary cover	

Top reported needed basic items*

Heating fuel	25%	■
Fuel storage	25%	■
Winter clothes	12%	■

Top reported needed winter item*

Kerosene heater	97%	■
-----------------	-----	---

Electricity access

Average number of hours of electricity per day	23
--	----



Food Security

Reported access to food assistance

62%	reported having received Public Distribution System (PDS) assistance in the month prior to the assessment
100%	reported access to a market within walking distance

Top two food consumption coping strategies*

Buy less expensive food	3%	■
Reduce food intake for males	3%	■

*Respondents could select multiple responses
**Insufficient sample size; fewer than five respondents

