

Yemen Joint Market Monitoring Initiative

January 2021 Situation Overview

Governorates: 16
Districts: 56
Total key informants (KIs): 293



WASH Cluster
Water Sanitation Hygiene

CMWG

Intersector Cash
and Markets
Working Group

REACH

Informing
more effective
humanitarian action

Introduction

The Yemen Joint Market Monitoring Initiative (JMMI) was launched by REACH in collaboration with the Water, Sanitation, and Hygiene (WASH) Cluster and the Cash and Market Working Group (CMWG) to support humanitarian actors with the harmonization of price monitoring among all cash actors in Yemen. The JMMI incorporates information on market systems including price levels and supply chains. The basket of goods to be assessed includes ten non-food items (NFIs), such as fuel, water, and hygiene products, reflecting the programmatic areas of the WASH Cluster. The JMMI tracks all components of the WASH and Food Survival Minimum Expenditure Basket (SMEB) as well as other food and non-food items. In light of the current COVID-19 pandemic, REACH has adapted the JMMI to begin assessing the potential impact of the pandemic on markets and on respondents' businesses.

Methodology

Data was collected through interviews with vendor key informants (KIs), selected by partner organisations from markets of various sizes in both urban and rural areas. Following data collection, REACH compiles, cleans and analyzes all data, through detailed follow-ups with partners. Findings are **indicative** for the assessed locations and time frame in which the data was collected. From April to September 2020, data for the JMMI was collected on a bi-weekly basis to better track disruptions caused by COVID-19. COVID-specific JMMI factsheets were produced bi-weekly, and a more comprehensive situation overview using data from both factsheets was produced monthly. After discussion with the CMWG, REACH resumed data collection on a monthly basis in September, and resumed producing one monthly situation overview. Please refer to the [appendix](#) for additional methodological details.

JMMI monthly figures

Data collection **10 January - 14 January**

14 Participating partners
16 Governorates assessed
56 Districts assessed
293 Vendor KIs surveyed

| Assessed items | December 2020 prices in YER | January 2021 prices in YER | Change (from December 2020) |
|---|-----------------------------|----------------------------|-----------------------------|
| Full SMEB* (dry beans) | 61704 | 56090 | -9.1% |
| WASH SMEB** | 15775 | 13790 | -12.6% |
| Soap (100g) | 200 | 180 | -10.0% |
| Laundry powder (100g) | 140 | 130 | -7.1% |
| Sanitary napkins (10 Pack) | 600 | 600 | 0.0% |
| Water trucking (1m ³) | 2500 | 2000 | -20.0% |
| Petrol (1L) | 383 | 350 | -8.6% |
| Diesel (1L) | 423 | 400 | -5.4% |
| Bottled water (0.75L) | 150 | 150 | 0.0% |
| Treated water (10L) | 100 | 100 | 0.0% |
| Bleach (1L) | 817 | 800 | -2.1% |
| Cooking gas (1cylinder) | 4750 | 5000 | 5.3% |
| Food SMEB (dry beans)[^] | 45929 | 42300 | -7.9% |
| Food SMEB (canned beans)[§] | 47917 | 44234 | -7.7% |
| Wheat flour (1 kg) | 360 | 328 | -8.9% |
| Rice (1 kg) | 850 | 825 | -2.9% |
| Dry kidney beans (1 kg) | 1000 | 1000 | 0.0% |
| Canned kidney beans (15 oz can) | 333 | 320 | -3.9% |
| Lentils (1 kg) | 750 | 800 | 6.7% |
| Vegetable oil (1L) | 963 | 900 | -6.5% |
| Sugar (1 kg) | 450 | 400 | -11.1% |
| Salt (1 kg) | 100 | 100 | 0.0% |
| Potatoes (1 kg) | 600 | 700 | 16.7% |
| Onions (1 kg) | 600 | 500 | -16.7% |

* Includes WASH and food SMEB; excludes cooking gas, NFI/Shelter and Services.

** Contains soap (1.05 kg), laundry powder (2 kg), sanitary napkins (50 units), and water (3.15 m3).

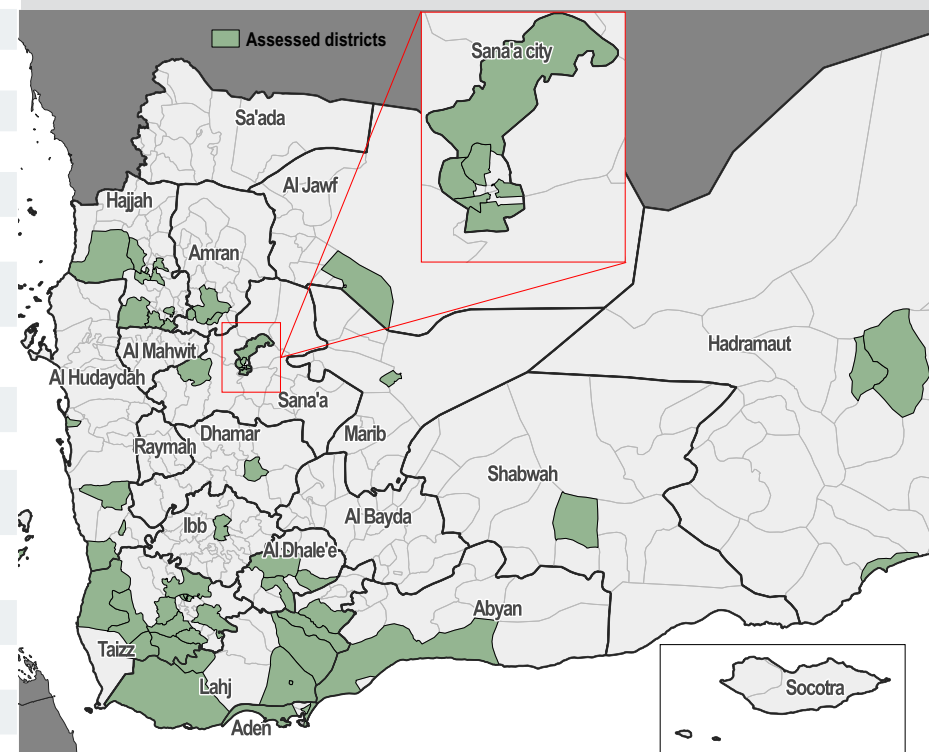
Sanitary napkins' units were changed from 20 to 50 based on CMWG's September SMEB revision.

[^] Contains wheat flour (75 kg), dry beans (10 kg), vegetable oil (8 L), sugar (2.5 kg), salt (1kg)

[§] Contains wheat flour (75 kg), canned beans (36 cans), vegetable oil (8 L), sugar (2.5 kg), salt (1kg)

Key findings

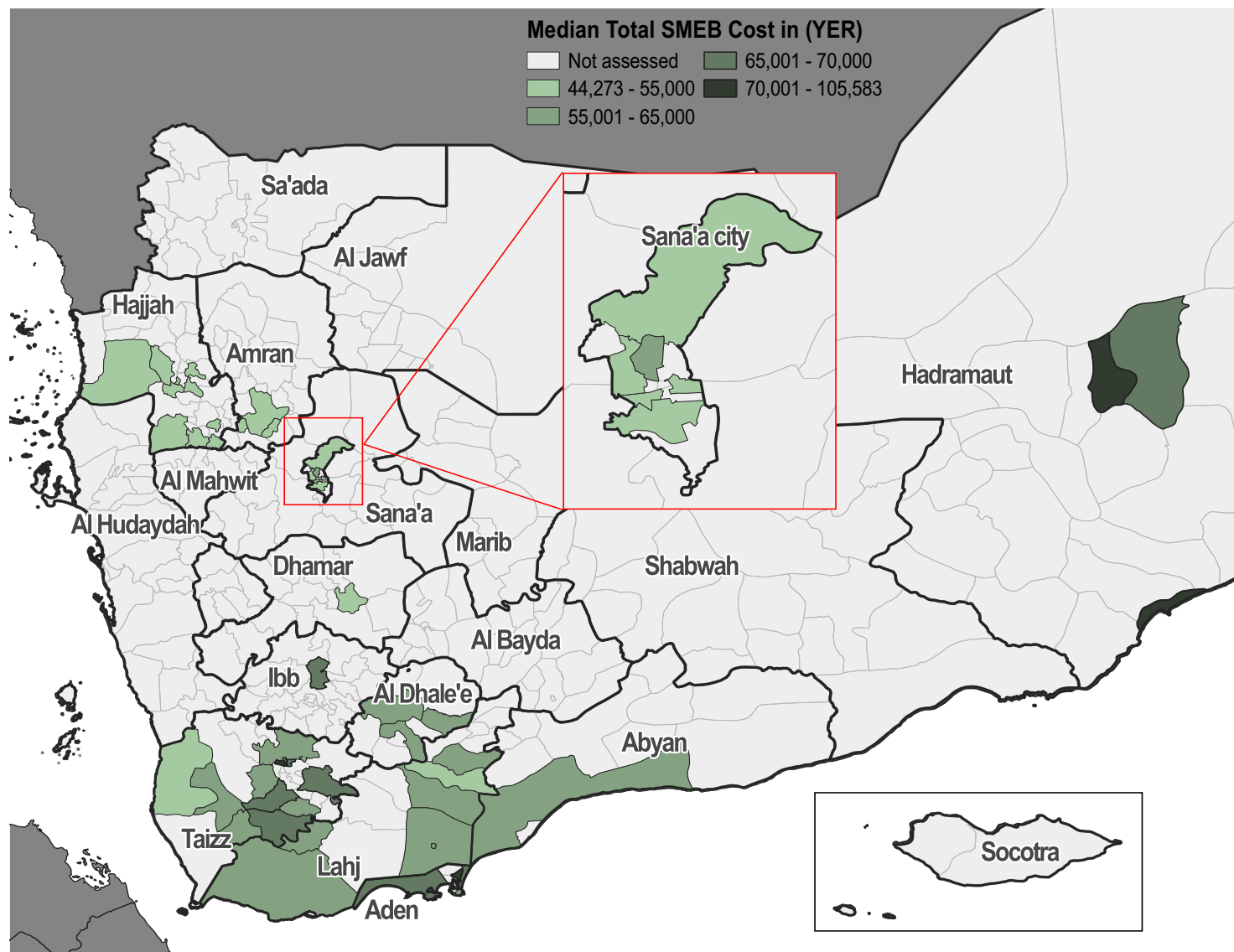
- Overall, exchange rates have changed considerably:** The median national exchange rate decreased to 596 Yemeni Riyal (YER) to one US dollar (USD)*. The lowest exchange rate was recorded in Ibb and Al Hudaydah with 590 Yemeni Riyal (YER) to one US dollar (USD). The highest exchange rate was recorded in Hadramaut with 897 YER to one USD. Followed by Shabwah governorate with 860 YER to USD.
- The reported number of business closures in the last 2 weeks within a 2 minute walk from KIs' stalls decreased with 13.4% compared to last round in December to reach a total of 59 business reported to be closed around the assessed markets.
- Price inflation** remains the most commonly reported constraint faced by the assessed vendors when obtaining fuel, WASH items, food items, and water trucking services.
- The food SMEB cost (with dry beans) was found to have **decreased by 7.9%** since the last round of data collection in December, and the WASH SMEB cost also **decreased by 12.6%**, contributing to a **9.1% decrease in the overall SMEB cost**.
- Overall, 11.2% of (33/293) KIs reported that their **supply routes changed** in a way harmful to their business in the 30 days prior to data collection.



Exchange Rate

| | | | | |
|--|---|---|---|--|
| 250 ► 0.0% USD/YER Official | 598 USD/YER Parallel market rate (in DFA) December 2020 | 590 ▼ 1.3% USD/YER Parallel market rate (in DFA) January 2021 | 890 USD/YER Parallel market rate (in IRG) December 2020 | 736 ▼ 17.9% USD/YER Parallel market rate (in IRG) January 2021 |
|--|---|---|---|--|

Total SMEB prices (10-14 January 2021)*,^



*Total SMEB cost in the legend represents the calculated food basket cost with dry beans.

^ Red outlines over districts indicate the districts for which outliers were recorded.

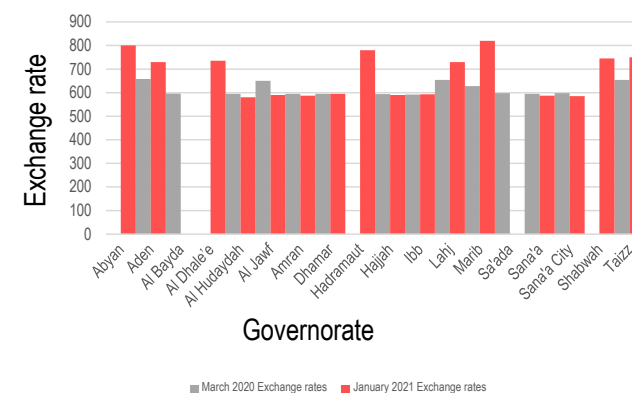
Exchange rate (YER/USD)*

| Governorate | March 2020 [^] | December 2020 | January 2021 |
|-------------|-------------------------|---------------|--------------|
| Abyan | NA | 890 | 800 |
| Aden | 658 | NA | 730 |
| Al Bayda | 596 | 893 | NA |
| Al Dhale'e | NA | 595 | 735 |
| Al Hudaydah | 595 | 610 | 580 (740) |
| Al Jawf | 650 | 598 | 590 |
| Amran | 595 | 600 | 587 |
| Dhamar | 595 | 900 | 595 |
| Hadramaut | NA | 598 | 780 |
| Hajjah | 594 | 596.5 | 590 |
| Ibb | 592 | 889 | 593 |
| Lahj | 654 | 900 | 729.5 |
| Marib | 628 | NA | 820 |
| Sa'ada | 598 | 602 | NA |
| Sana'a | 595 | 599 | 587 |
| Sana'a City | 598 (628) | 912 | 585 |
| Shabwah | NA | 890 | 745 |
| Taizz | 654 | 840 | 750 |

*New banknote exchange rates / Exchange rate for the new currency released last year is in parenthesis.

[^]March was chosen as a baseline to assess the effect of COVID-19 on exchange rates.

Exchange rate in March 2020 and January 2021 (YER/USD)*



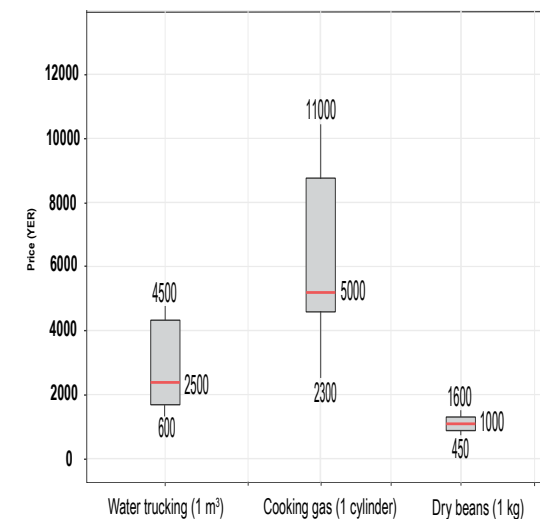
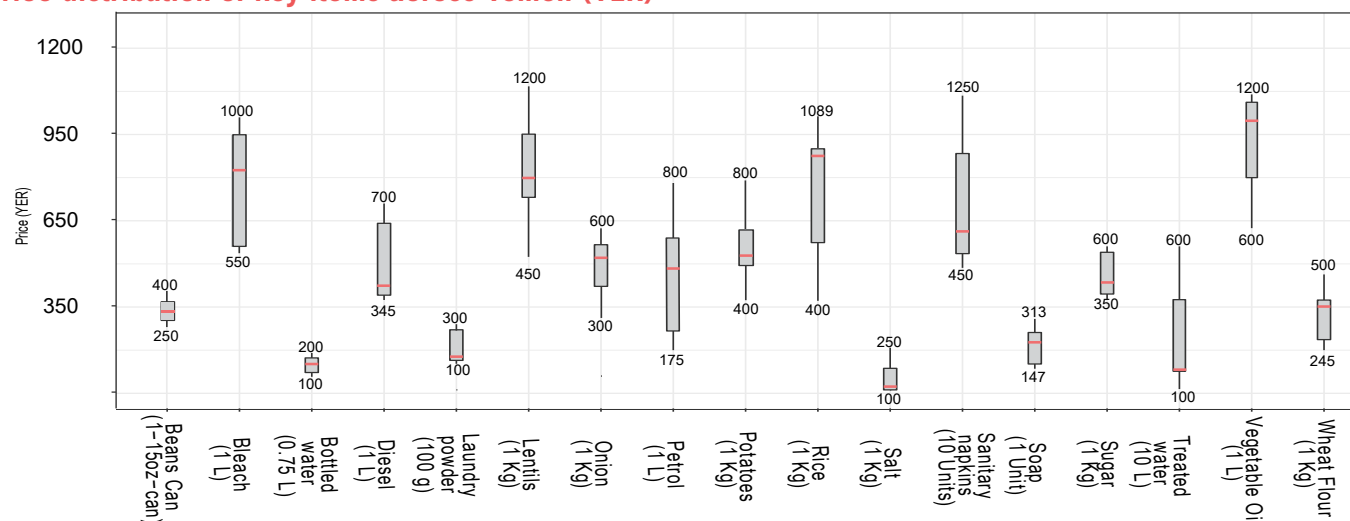
*Governorate labels point to two bars indicating March base values and January values. Gaps between bars indicates that no exchange rate value was recorded in this governorate.

Price per key item, per governorate (YER)*

| Governorate | Petrol (1L) | Diesel (1L) | Cooking gas (1 cylinder) | Bottled water (0.75L) | Treated water (10L) | Bleach (1L) | Soap (100g) | Laundry powder (100g) | Sanitary napkins (10 units) | Water trucking (1m³) | WASH SMEB | Wheat flour (1Kg) | Rice (1Kg) | Beans dry (1Kg) | Beans cans (15oz) | Lentils (1 Kg) | Vegetable oil (1L) | Sugar (1Kg) | Salt (1Kg) | Potatoes (1Kg) | Onions (1 Kg) | Food SMEB (Dry Beans) | Food SMEB (Canned beans) |
|-----------------------|-------------|-------------|--------------------------|-----------------------|---------------------|-------------|-------------|-----------------------|-----------------------------|----------------------|-----------|-------------------|------------|-----------------|-------------------|----------------|--------------------|-------------|------------|----------------|---------------|-----------------------|--------------------------|
| Abyan | 330 | 400 | 3500 | 100 | 100 | 1000 | 237 | 100 | 600 | 2000 | 13789 | 350 | 800 | 1000 | 375 | NA | 850 | 500 | 100 | 800 | 700 | 44400 | 54250 |
| Aden | 330 | 400 | 6350 | 200 | 125 | 900 | 190 | 100 | 650 | 4500 | 21420 | 400 | 1000 | 750 | 400 | 1000 | 1000 | 500 | 100 | 800 | 500 | 46850 | 47900 |
| Al Dhale'e | 330 | 400 | 3600 | 150 | 200 | 800 | 200 | 145 | 667 | 3000 | 17785 | 340 | 926 | 900 | 354 | 700 | 1100 | 400 | 100 | 850 | 500 | 44400 | 40579 |
| Al Hudaydah | 650 | 480 | 11000 | 160 | 50 | 470 | 150 | 150 | 480 | NA | NA | 270 | 875 | 1000 | 300 | 700 | 700 | 350 | 100 | 400 | 400 | 36825 | 47612.5 |
| Al Jawf | 450 | 450 | 3500 | 200 | NA | 600 | 150 | 120 | 1200 | 1500 | 14700 | 280 | 525 | NA | 300 | NA | 1100 | 300 | 110 | 700 | 300 | NA | 41460 |
| Amran | 295 | 345 | NA | 130 | 120 | 700 | 150 | 120 | 500 | 1000 | 9625 | 300 | 500 | 600 | 300 | 650 | 760 | 350 | 150 | 400 | 450 | 35605 | 37950 |
| Dhamar | 500 | 675 | 6500 | 150 | 600 | 800 | 188 | 120 | 550 | 1500 | 11849 | 246 | 1000 | 1000 | 300 | 750 | 1233 | 400 | 100 | 600 | 300 | 39414 | 37625 |
| Hadramaut | 335 | 325 | 3000 | 150 | 750 | 900 | 307 | 118 | 750 | 4000 | 21918 | 350 | 750 | 1000 | 400 | 900 | 900 | 460 | 250 | 1000 | 750 | 44850 | 49250 |
| Hajjah | 650 | 800 | 8000 | 150 | 100 | 900 | 150 | 130 | 500 | 2000 | 12975 | 262 | 800 | 500 | 300 | 800 | 800 | 400 | 100 | 500 | 500 | 32150 | 40214 |
| Ibb | 295 | 345 | 5000 | 150 | 100 | 800 | 200 | 150 | 578 | 2500 | 15865 | 500 | 575 | 825 | 300 | 725 | 575 | 500 | 100 | 375 | 300 | 51700 | 53550 |
| Lahj | 330 | 390 | 5800 | 150 | 100 | 900 | 185 | 140 | 600 | 1500 | 12468 | 328 | 950 | 1100 | 400 | 1000 | 1000 | 400 | 150 | 700 | 500 | 44750 | 41175 |
| Marib | 175 | 400 | 2300 | 70 | 100 | 650 | 184 | 120 | 500 | 1000 | 9982 | 360 | 550 | NA | 320 | 1000 | 1100 | 400 | 100 | NA | NA | NA | 53750 |
| Sana'a | NA | NA | 3950 | 120 | 100 | 700 | 194 | 109 | 450 | 600 | 8352 | 300 | 400 | NA | 300 | 550 | 850 | 350 | 200 | 525 | 575 | NA | 48150 |
| Sana'a City | 295 | 345 | 4000 | 110 | 100 | 500 | 120 | 120 | 600 | 2000 | 12960 | 300 | 890 | 1000 | 300 | 525 | 788 | 350 | 100 | 500 | 500 | 39779 | 48420 |
| Shabwah | 340 | 360 | NA | 100 | 150 | NA | 150 | 400 | NA | 2600 | NA | 400 | 900 | NA | 350 | NA | 1200 | 500 | 100 | NA | NA | NA | 40405 |
| Taizz | 370 | 400 | 4000 | 150 | 100 | 875 | 200 | 136 | 600 | 2500 | 15685 | 350 | 600 | 1100 | 350 | 800 | 950 | 425 | 100 | 700 | 400 | 46013 | 48144 |
| National median price | 350 | 400 | 5000 | 150 | 100 | 800 | 180 | 130 | 600 | 2000 | 15775 | 320 | 800 | 1000 | 332 | 800 | 900 | 400 | 100 | 600 | 500 | 47917 | 45929 |

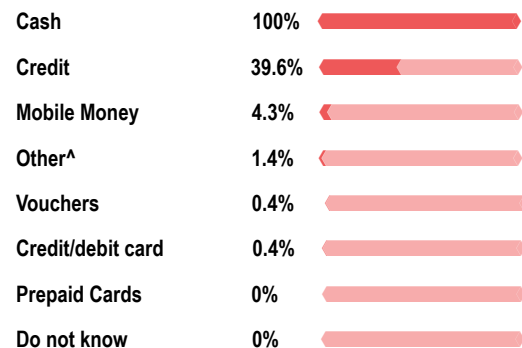
*Darker color strokes indicate high outliers for each commodity, lighter color strokes indicate the low outliers of each commodity.

Price distribution of key items across Yemen (YER)



WASH SMEB*

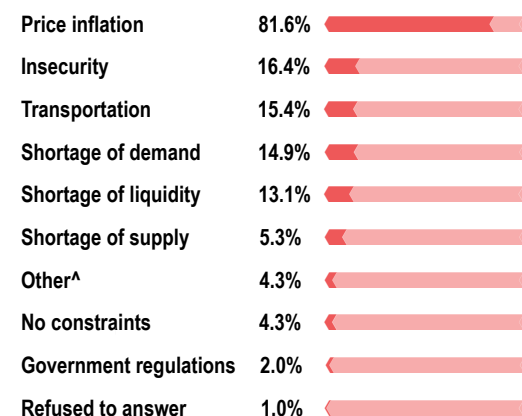
WASH vendor KIs reported accepting the following payment modalities*



*Values do not add up to 100% as vendor KIs were allowed to select multiple options.

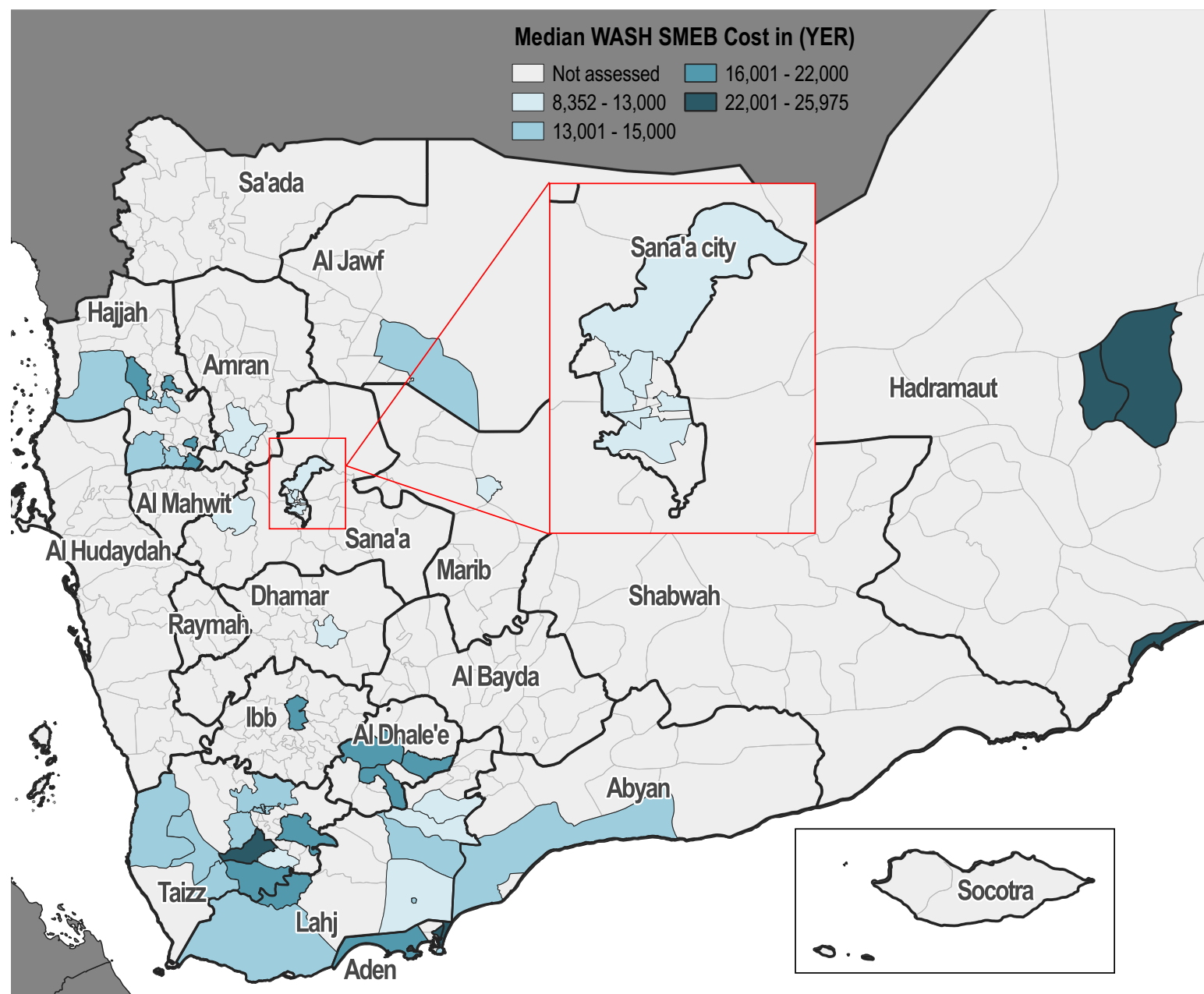
^Includes bank transfers.

Most commonly reported constraints, by % of WASH vendor KIs*



*Values do not add up to 100% as vendor KIs were allowed to select multiple options.

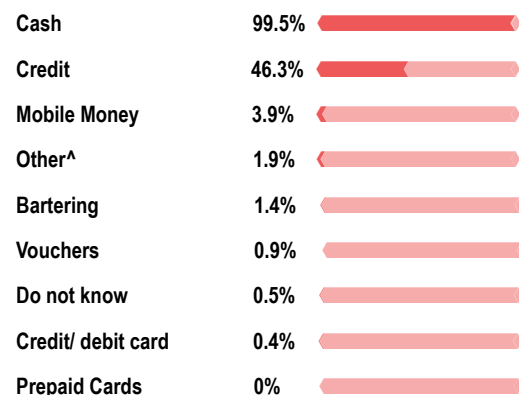
^Includes increased currency fluctuations, loss of vendors in the area, and additional fees.



*Red outlines over districts indicate the districts for which outliers were recorded.

Food SMEB*

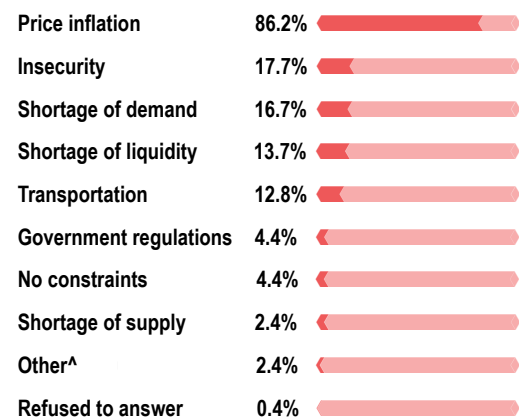
Food vendor KIs reported accepting the following payment modalities*



*Values do not add up to 100% as vendor KIs were allowed to select multiple options.

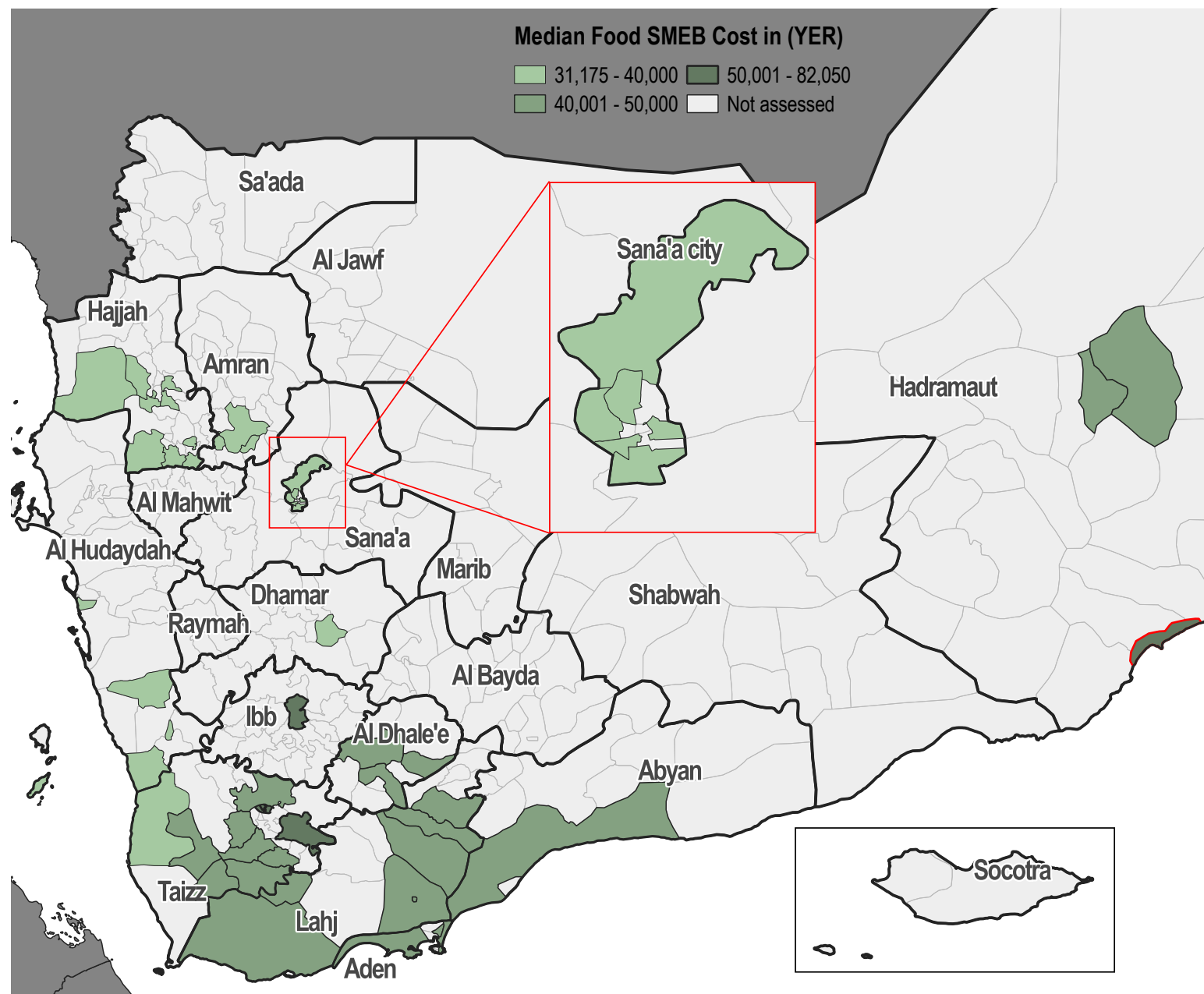
^Includes bank transfers.

Most commonly reported constraints, by % of food vendor KIs*



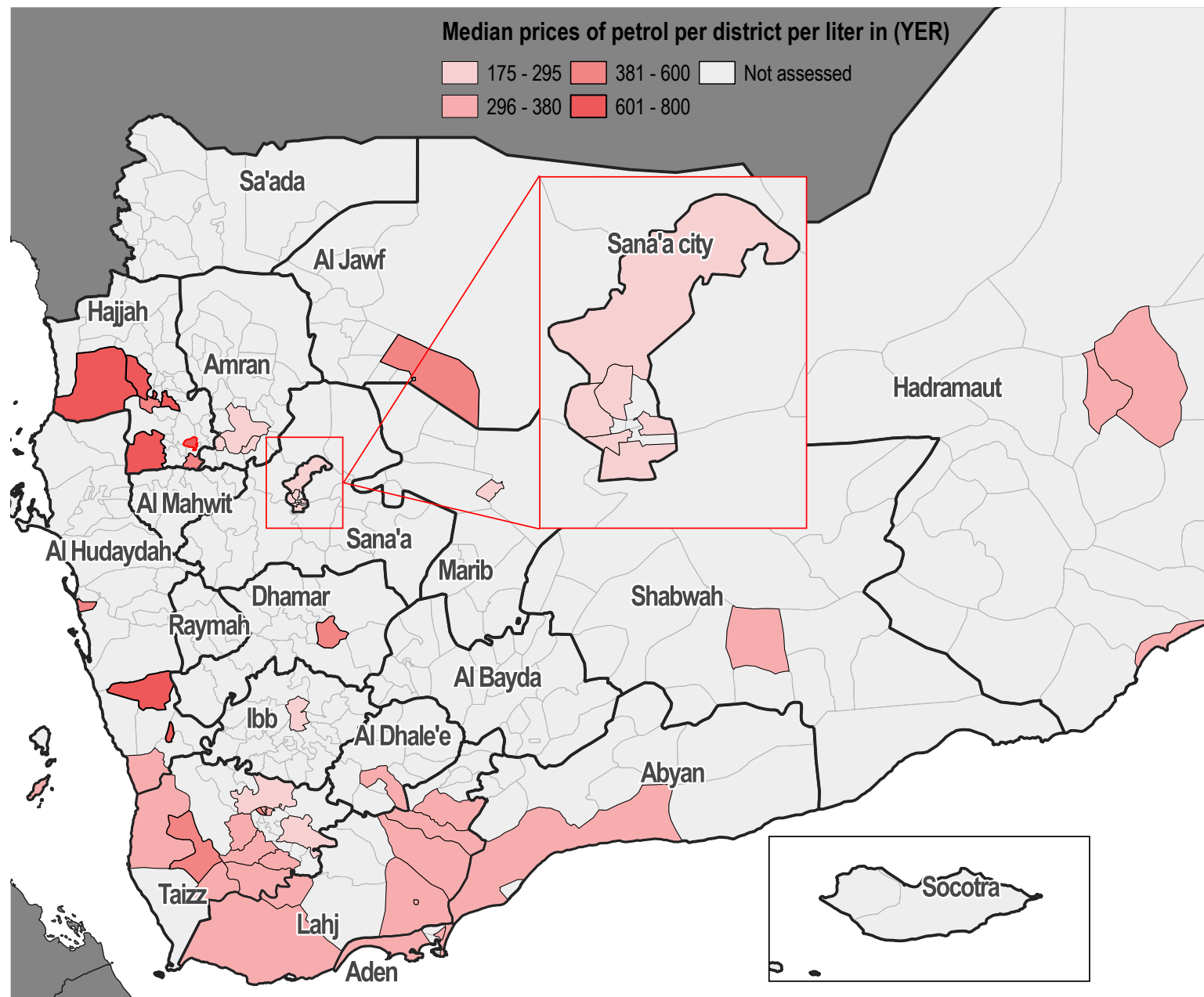
*Values do not add up to 100% as vendor KIs were allowed to select multiple options.

^Includes increased currency fluctuations, lack of oil derivatives, and additional fees.

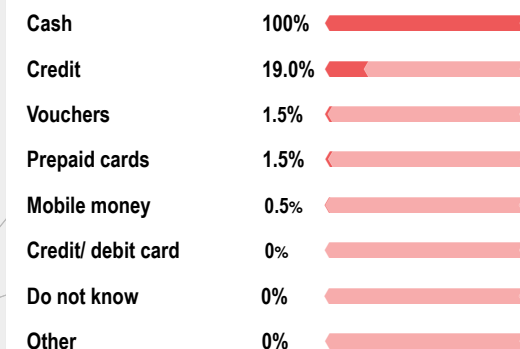


*Total SMEB cost in the legend represents the calculated food basket cost with dry beans.

Fuel

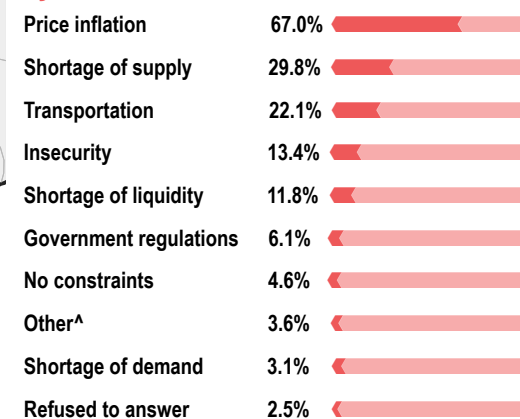


Fuel vendor KIs reported accepting the following payment modalities*



*Values do not add up to 100% as vendor KIs were allowed to select multiple options.

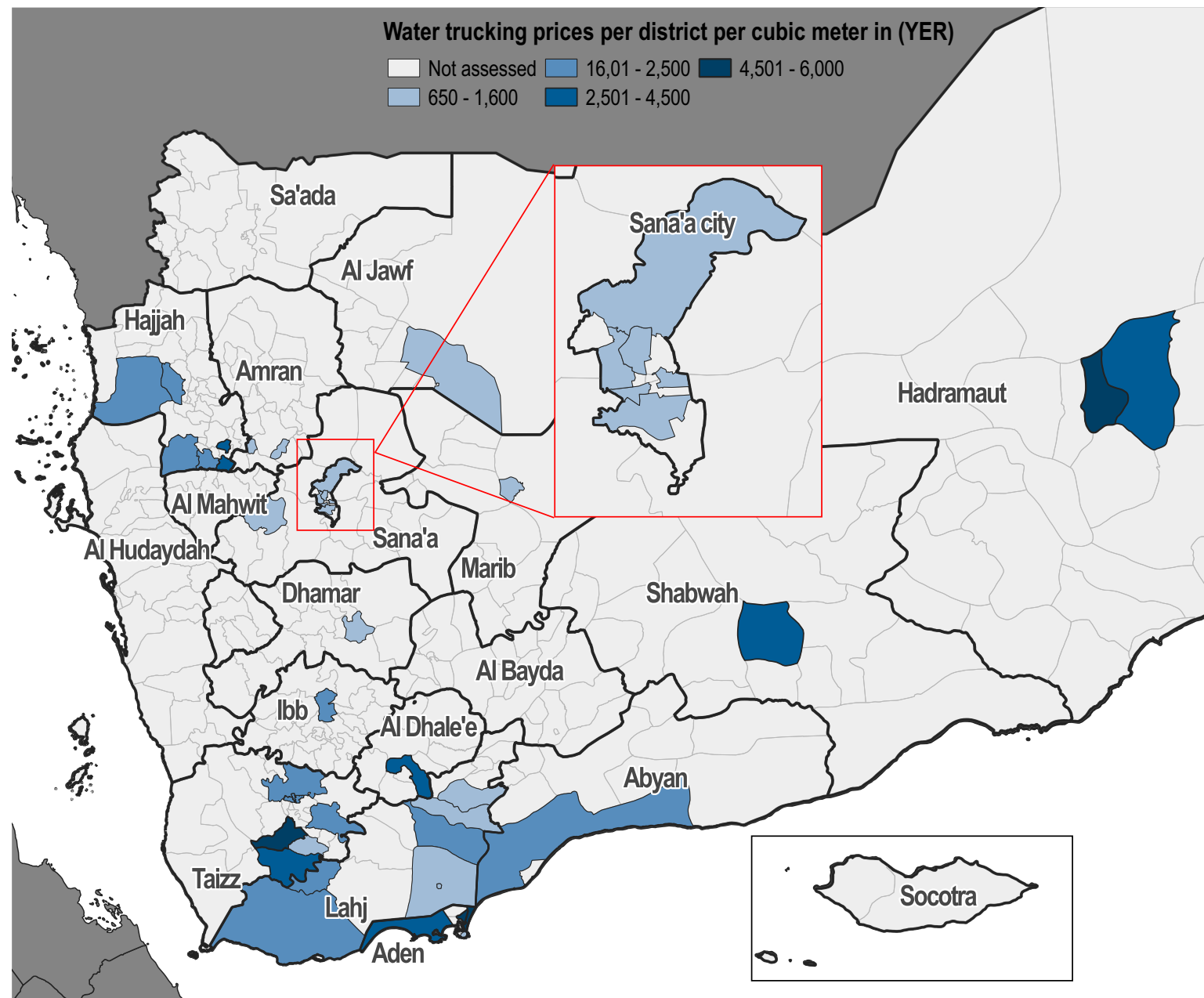
Most commonly reported constraints, by % of fuel vendor KIs*



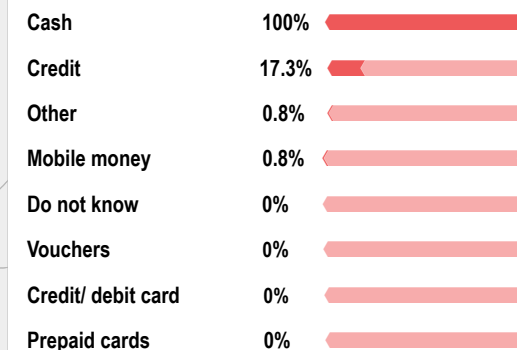
*Values do not add up to 100% as vendor KIs were allowed to select multiple options.

^Includes increased currency fluctuations, loss of vendors in the area, and additional fees.

Water Trucking



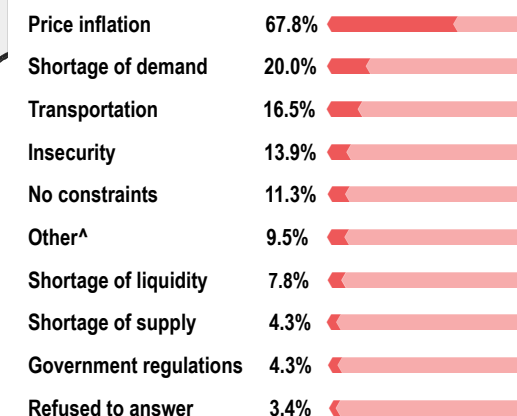
Water trucking vendor KIs reported accepting the following payment modalities*



*Values do not add up to 100% as vendor KIs were allowed to select multiple options.

^Includes bank transfers.

Most commonly reported constraints, by % of water trucking vendor KIs*



*Values do not add up to 100% as vendor KIs were allowed to select multiple options.

^Includes increased currency fluctuations, loss of vendors in the area, and additional fees.

SUPPLY CHAIN OVERVIEW FOR YEMEN

Median price of goods originating from Aden and al Hudaydah

Vendor KIs were asked about the origin of various products sold in their stores. The two main ports of origin for these products were Aden and al Hudaydah. The table below shows the median price of goods originating from these two ports.

| Item | Aden (price in YER) | Al Hudaydah (price in YER) |
|--------------------------------|------------------------|----------------------------------|
| Petrol (1L) | 350 | 650 |
| Diesel (1L) | 400 | 500 |
| Cooking Gas (1 cylinder) | 4100 | 10000 |
| Soap (100g) | 180 | 150 |
| Laundry Powder (100g) | 130 | 150 |
| Sanitary Napkins (10 units) | 600 | 500 |
| Wheat Flour (1kg) | 375 | 270 |
| Beans Dry (1kg) | 1200 | 1000 |
| Beans Can (15oz can) | 375 | 300 |
| Vegetable Oil (1L) | 1050 | 680 |
| Sugar (1kg) | 425 | 350 |
| Salt (1kg) | 100 | 100 |
| Potatoes (1kg) | 800 | 400 |
| Onions (1kg) | 450 | 400 |
| Bleach (1L) | 800 | 800 |
| Bottled water (0.75L) | 200 | 150 |
| Treated water (10L) | 100 | 100 |
| Water trucking (1m³) | 2000 | 2000 |
| Rice (1kg) | 1075 | 1000 |
| Lentils (1kg) | 1000 | 700 |

Average reported restocking time (days)*^

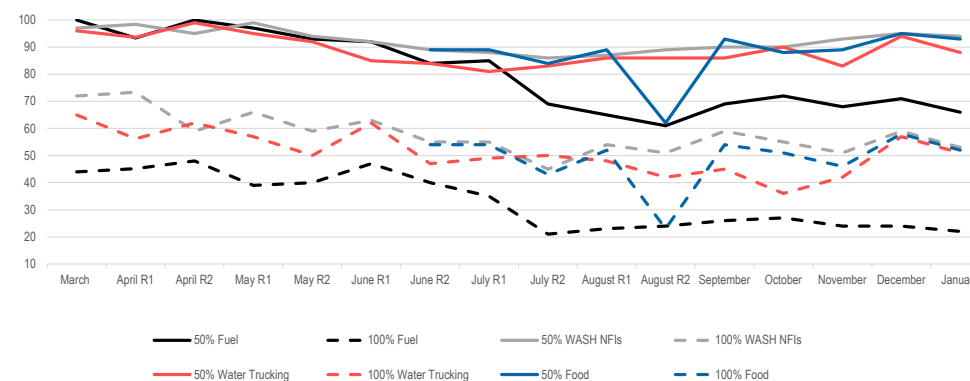
| Governorate | Fuel Items | WASH Items | Food Items |
|-------------|------------|------------|------------|
| Abyan | 8 (0) | 3 (0) | 3 (0) |
| Aden | 4 (0) | 2 (-1) | 2 (0) |
| Al Dhale'e | 3 (0) | 2 (0) | 2 (0) |
| Al Hudaydah | 7 (1) | 7 (0) | 7 (0) |
| Al Jawf | 5 (2) | 3 (-1) | 2 (-2) |
| Amran | 12 (3) | 4 (-6) | 5 (-4) |
| Dhamar | NA | 1 (-2) | 1 (-1) |
| Hadramaut | 4 (1) | 2 (0) | 4 (2) |
| Hajjah | 8 (0) | 4 (0) | 4 (0) |
| Ibb | 6 (1) | 5 (1) | 4 (0) |
| Lahj | 6 (2) | 5 (1) | 4 (2) |
| Marib | 4 (2) | 6 (-24) | 6 (-24) |
| Sana'a | 4 (2) | 2 (0) | 2 (0) |
| Sana'a City | 5 (1) | 3 (0) | 2 (0) |
| Shabwah | 1 (0) | 1 (0) | 2 (1) |
| Taizz | 6 (1) | 6 (0) | 7 (2) |

*Previous average restocking time (December 2020) in days between brackets.

^N/A indicates that the specific question was not answered by the KIs.

Vendor capacity to respond to a sudden increase in demand: Proportion of vendors able to absorb a 50% and 100% increase in demand for key items*

To understand vendor capacity to cope with sudden increases in the demand for water trucking, fuel, and WASH items, vendor KIs were asked if they would be able to increase their stock by 50% and 100% respectively.

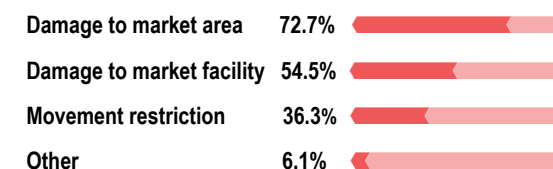


*Between April and August 2020, two rounds of data collection were held each month to monitor the foreseen more rapid changes as a result of the COVID-19 pandemic and restrictions

Effect of supply route changes on businesses

Overall, 11.2% of vendor KIs (33/293) reported having faced supply chain disruptions in the 30 days prior to data collection. Those vendors were asked which supply chain issues they had faced (see graph on the right).

Most commonly reported supply chain issues*



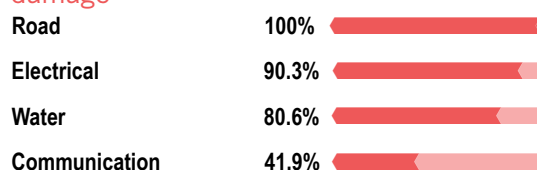
*Values do not add up to 100% as vendor KIs were allowed to select multiple options.

^Other includes: "Lack of oil derivatives" and "high exchange USD/YER rate".

Damaged infrastructure affecting vendor capacity to conduct business

The 24 vendor KIs who reported "damage to the market area" or "damage to the market facility" as concerns affecting their capacity to run their businesses were then asked which type of infrastructure was most damaged.

Most commonly reported infrastructure damage*



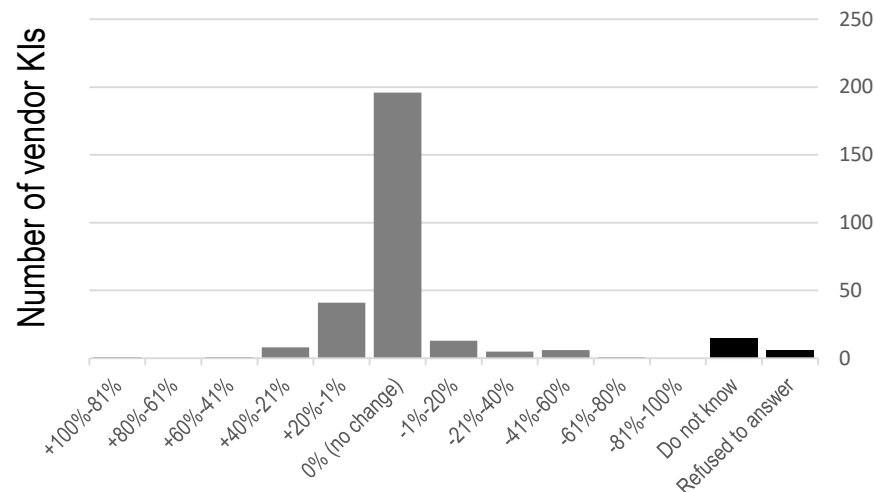
*Values do not add up to 100% as vendor KIs were allowed to select multiple options.

Impact of COVID-19 on respondents' businesses

Reported estimated change in number of customers in the two weeks prior to data collection

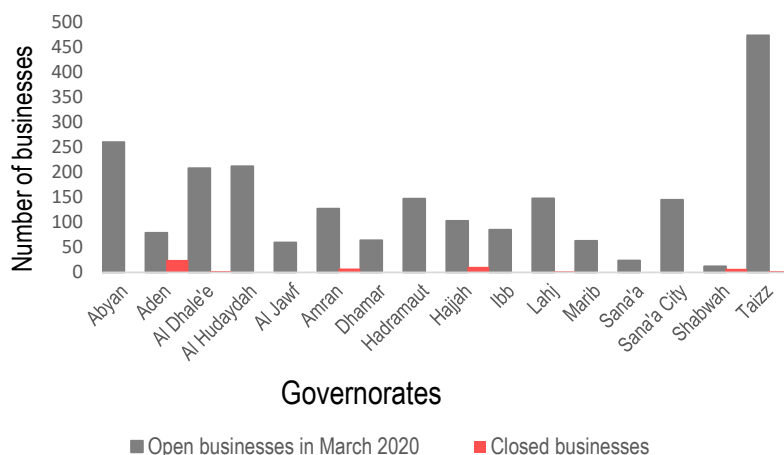
Overall, around half of vendor KIs (62.7%) reported having perceived no change in the number of customers in the two weeks prior to data collection. Less vendors reported having experienced a change in customers, be it either a decrease (1.7% or 5/293 vendors) or increase (17.4%, or 51/293 vendors) of customers.

Of the 293 vendor KIs surveyed, 5.4% (16/293) reported having faced difficulties obtaining key commodities due to disruptions caused by COVID-19 measures in the two weeks prior to data collection (compared to 3.4% reporting this during previous round of data collection in December).



Average number of businesses closures by governorate^

The reported number of businesses within a 2 minute walk from vendor KIs' stalls being closed in the two weeks prior to data collection (59 businesses) increased by 13.4% compared to the last round of data collection in December (52 businesses).



Average reported number of nearby businesses that were open in March 2020^



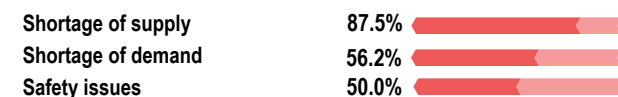
^Average number of businesses within a two minute walk from KIs' businesses that were reportedly open in early March 2020.

Average reported number of nearby businesses that were closed^



^Average number of businesses within a two minute walk from KIs' businesses that were reportedly closed due to COVID-19 in the two weeks prior to data collection.

Top 3 COVID-19 related constraints*

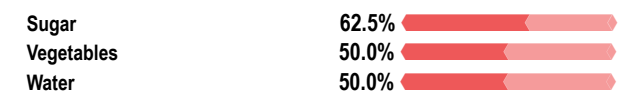


Results from the previous JMIMI round (6 -10 December)



*Based on the responses from the 5.4% (16 out of 293) of vendor KIs who had difficulties obtaining goods due to COVID-19.

Top 3 most difficult goods to obtain*



Results from the previous JMIMI round (6 -10 December)



*Based on the responses from the 5.4% (16 out of 293) of vendor KIs who had difficulties obtaining goods due to COVID-19.

ABOUT REACH'S COVID-19 RESPONSE

As an initiative deployed in many vulnerable and crisis-affected countries, REACH is deeply concerned by the devastating impact the COVID-19 pandemic may have on the millions of affected people we seek to serve. REACH is currently working with Cash Working Groups and partners to scale up its programming in response to this pandemic, with the goal of identifying practical ways to inform humanitarian responses in the countries where we operate. COVID-19-relevant market monitoring and market assessments are a key area where REACH aims to leverage its existing expertise to help humanitarian actors understand the impact of changing restrictions on markets and trade. Updates regarding REACH's response to COVID-19 can be found in [a devoted thread](#) on the REACH website. Contact geneva@impact-initiatives.org for further information.

DISTRICTS COVERED

| Governorate | District | Petrol price | Water Trucking | SMEB WASH | SMEB Food | SMEB Total | Fuel: Supplier Governorate | Fuel: Total number of respondents^ | WASH: Supplier Governorate | WASH: Total number of respondents^ | Food: Supplier governorate | Food: Total number of respondents^ |
|-------------|-----------------|--------------|----------------|-----------|-----------|------------|----------------------------|------------------------------------|----------------------------|------------------------------------|----------------------------|------------------------------------|
| Hajjah | Abs | 725 | 2000 | 13700 | 33300 | 47000 | 5/6 | Al Hudaydah | 5/6 | Al Hudaydah | 4/6 | Al Hudaydah |
| Al Dhale'e | Ad Dhale'e | 330 | 3000 | 18050 | 44963 | 63013 | 5/8 | Aden | 5/8 | Al Dhale'e | 8/8 | Al Dhale'e |
| Lahj | Al Hawtah | 330 | 1600 | 14715 | 46400 | 61115 | 3/3 | Aden | 3/3 | Aden | 2/3 | Lahj |
| Taizz | Al Mukha | 373 | NA | 14912 | 37075 | 51987 | 6/6 | Aden | 6/6 | Aden | 6/6 | Aden |
| Aden | Al Buraiqeh | 330 | 4500 | 21800 | 46850 | 68650 | 5/5 | Aden | 5/5 | Aden | 5/5 | Aden |
| Al Hudaydah | Al Hawak | 395 | NA | NA | 32775 | NA | NA | NA | NA | NA | NA | NA |
| Sana'a | Al Haymah Ad | | 600 | 8352 | NA | NA | 2/2 | Al Hudaydah | 2/2 | Sana'a City | 2/2 | Sana'a City |
| Al Jawf | Al Hazm | 450 | 1500 | 14700 | NA | NA | 3/3 | Marib | 3/3 | Sana'a | 3/3 | Sana'a |
| Al Hudaydah | Al Khawkhah | 350 | NA | NA | 39100 | NA | 3/3 | Aden | 3/3 | Aden | 3/3 | Aden |
| Taizz | Al Ma'afer | 350 | 5500 | 24123 | 44822 | 68945 | 3/4 | Aden | NA | NA | NA | NA |
| Lahj | Al Madaribah Wa | 330 | 2000 | 13275 | 44650 | 57925 | 3/3 | Aden | 3/3 | Aden | 3/3 | Sana'a |
| Hajjah | Al Mahabishah | 650 | NA | 13098 | 31175 | 44273 | 3/3 | Hajjah | 3/3 | Hajjah | 3/3 | Hajjah |
| Ibb | Al Makhadir | 295 | 2500 | 15865 | 51700 | 67565 | 2/4 | Sana'a | 4/4 | Ibb | 4/4 | Ibb |
| Lahj | Al Maqatirah | 350 | 2000 | 15725 | 46300 | 62025 | 2/3 | Lahj | 2/3 | Aden | NA | NA |
| Taizz | Al Mawasit | 350 | 1000 | 10828 | 46075 | 56903 | 2/4 | Lahj | 2/4 | Taizz | 4/4 | Taizz |
| Lahj | Al Milah | 330 | 2200 | 13685 | 45920 | 59605 | 1/1 | Aden | 1/1 | Aden | 1/1 | Marib |
| Taizz | Al Mudhaffar | 400 | 1750 | 13108 | 61700 | 74808 | 3/3 | Aden | 2/3 | Taizz | 2/3 | Aden |
| Hadramaut | Al Mukalla City | 330 | NA | 23533 | 82050 | 105583 | 3/3 | Hadramaut | | NA | 3/3 | Hadramaut |
| Taizz | Al Qahirah | 360 | 1750 | 13213 | 51900 | 65113 | 3/3 | Aden | 3/3 | Aden | 3/3 | Aden |
| Sana'a City | Al Wahdah | 295 | 600 | 8565 | 39973 | 48538 | 2/2 | Al Hudaydah | 2/2 | Sana'a | 2/2 | Sana'a |
| Taizz | Al Wazi'iyah | 375 | NA | 14399 | 46255 | 60654 | 3/3 | Aden | 3/3 | Aden | 3/3 | Aden |
| Amran | Amran | 295 | 1000 | 9625 | 35415 | 45040 | NA | NA | NA | NA | NA | NA |
| Sana'a City | As Sabain | 295 | 1600 | 11257 | 37650 | 48907 | 3/3 | Sana'a City | 2/3 | Sana'a City | 2/3 | Sana'a City |
| Hajjah | Ash Shaghadirah | | 2000 | 13223 | 35175 | 48398 | 2/2 | Al Hudaydah | 2/2 | Al Hudaydah | 2/2 | Al Hudaydah |
| Aden | Ash Shaikh | 330 | 6000 | 25975 | 46850 | 72825 | 4/4 | Aden | 4/4 | Aden | 4/4 | Aden |
| Taizz | Ash Shamayatayn | 350 | 4000 | 20098 | 45713 | 65810 | 3/6 | Aden | 4/6 | Aden | 4/6 | Aden |
| Al Dhale'e | Ash Shu'ayb | NA | NA | 16984 | 43706 | 60690 | NA | NA | 4/4 | Aden | 3/4 | Aden |
| Hajjah | Aslem | 650 | 2500 | 15475 | 35150 | 50625 | 3/5 | Al Hudaydah | 3/6 | Al Hudaydah | 3/6 | Al Hudaydah |
| Taizz | At Ta'iziyah | 295 | 2500 | 14975 | 49100 | 64075 | NA | NA | 4/4 | Taizz | 4/4 | Taizz |
| Shabwah | Ataq | 340 | 2600 | NA | NA | NA | 3/3 | Aden | 2/2 | Shabwah | 3/3 | Shabwah |
| Sana'a City | Ath'thaorah | 295 | 1100 | 10125 | 39275 | 61400 | 3/3 | Sana'a | 3/3 | Sana'a | 3/3 | Sana'a |
| Sana'a City | Az'zal | 295 | 1330 | 10850 | 36675 | 47525 | 3/3 | Sana'a | 3/3 | Sana'a | 3/3 | Sana'a |
| Hajjah | Bani Al Awam | 525 | 3500 | 18785 | 34350 | 53135 | 2/3 | Hajjah | NA | NA | 2/3 | Al Hudaydah |
| Sana'a City | Bani Al Harith | 295 | 1100 | 10850 | 39475 | 47525 | 3/3 | Sana'a | 3/3 | Sana'a | 3/3 | Sana'a |
| Hajjah | Bani Qa'is | 650 | 2000 | 13375 | 35250 | 48625 | 3/3 | Al Hudaydah | 3/3 | Al Hudaydah | 3/3 | Al Hudaydah |
| Aden | Craiter | 330 | 1600 | 14385 | 42560 | 56945 | 3/3 | Aden | 3/3 | Aden | 3/3 | Aden |
| Dhamar | Dhamar City | 500 | 1500 | 11849 | 39414 | 51263 | NA | NA | 3/3 | Dhamar | 3/3 | Dhamar |
| Taizz | Dimnat Khadir | 295 | 2500 | 15475 | 50950 | 66425 | 2/4 | Sana'a | 4/4 | Taizz | 4/4 | Taizz |
| Lahj | Habil Jabr | 340 | 1500 | 12225 | 46038 | 58263 | 2/3 | Aden | 3/3 | Aden | 3/3 | Aden |
| Hajjah | Hajjah City | 800 | 3000 | 18675 | 31350 | 50025 | 3/3 | Al Hudaydah | 3/3 | Al Hudaydah | 3/3 | Al Hudaydah |

CONT.

| Governorate | District | Petrol price | Water Trucking | SMEB WASH | SMEB Food | SMEB Total | Fuel: Supplier Governorate | Fuel: Total number of respondents^ | WASH: Supplier Governorate | WASH: Total number of respondents^ | Food: Supplier governorate | Food: Total number of respondents^ |
|-------------|-------------------|--------------|----------------|-----------|-----------|------------|----------------------------|------------------------------------|----------------------------|------------------------------------|----------------------------|------------------------------------|
| Taizz | Jabal Habashy | 370 | NA | 14924 | 48300 | 63224 | 10/10 | Lahj | 11/11 | Taizz | 3/3 | Al Hudaydah |
| Amran | Jabal Iyal Yazid | 295 | NA | 10470 | 34325 | 44795 | 1/1 | Al Hudaydah | 1/1 | Amran | 1/1 | Amran |
| Abyan | Khanfir | 330 | 2000 | 13789 | 44400 | 58189 | 3/3 | Aden | 3/3 | Abyan | 3/5 | Abyan |
| Aden | Khur Maksar | 330 | 5000 | 23390 | 44788 | 68178 | 4/4 | Aden | 4/4 | Aden | 4/4 | Aden |
| Hajjah | Kuhlan Ash Sharaf | | NA | 15098 | 33980 | 49078 | NA | NA | 2/3 | Al Hudaydah | 2/3 | Al Hudaydah |
| Sana'a City | Ma'ain | 295 | 600 | 8670 | 39829 | 48499 | 2/2 | Al Hudaydah | 2/2 | Sana'a | 2/2 | Sana'a |
| Marib | Marib City | 175 | 1000 | 9982 | NA | NA | 3/3 | Marib | 3/3 | Marib | 3/3 | Marib |
| Taizz | Mawza | 400 | NA | 14399 | 47025 | 61424 | 3/3 | Aden | 3/3 | Aden | 2/3 | Aden |
| Al Dhale'e | Qa'atabah | NA | NA | 17243 | 44038 | 61280 | NA | NA | 4/4 | Aden | 4/4 | Aden |
| Hajjah | Qafil Shamer | 500 | NA | 13353 | 31175 | 44528 | 2/2 | Hajjah | 3/3 | Hajjah | 3/3 | Hajjah |
| Lahj | Radfan | 330 | 1125 | 9774 | 44488 | 54261 | 2/3 | Aden | 3/3 | Aden | 3/3 | Aden |
| Taizz | Salh | 370 | 1833 | 13849 | 52150 | 65999 | 3/3 | Aden | 3/3 | Aden | 3/3 | Aden |
| Hadramaut | Sayun | 335 | 5000 | 24927 | 45550 | 70477 | 3/3 | Hadramaut | 3/3 | Hadramaut | 3/3 | Hadramaut |
| Hadramaut | Tarim | 335 | 4000 | 22140 | 46325 | 68465 | 3/3 | Hadramaut | 3/3 | Hadramaut | 3/3 | Hadramaut |
| Lahj | Tuban | 330 | 1000 | 10830 | 46704 | 57534 | 6/7 | Aden | 7/7 | Aden | 5/7 | Aden |
| Al Hudaydah | Zabid | 650 | NA | NA | 36665 | NA | 9/9 | Al Hudaydah | 9/9 | Al Hudaydah | 9/9 | Al Hudaydah |

^If the number is 4/10 (e.g.), this indicates that 10 vendor KIs were interviewed, and of this, 4 answered the supply question.

The supplier governorate indicates the most prevalent answer. In the case of a tie, both governorates are shown.

*The table shows SMEB values and supply chains inside the same governorate and towards other governorates. Districts without a main supplier are those districts where vendor KIs could not identify the origin of the items they sold.

APPENDIX

What is the intersectoral or cash and market working group?

With the emergence of the conflict in 2014, humanitarian actors in Yemen began using cash and vouchers as a response tool to meet the immediate needs of the Yemeni population. The CMWG was established to provide a platform for discussion and setting standards/recommendations on cash and market-based responses (inclusive of cash and vouchers) for the cash actors in Yemen. The JMIMI was developed by the CMWG, the WASH Cluster, and REACH in order to harmonize price monitoring amongst WASH actors in Yemen.

Additional information on methodology

To be assessed by the JMIMI, markets must be either a single permanent market, or a local community where multiple commercial areas are located in close proximity to one another. When possible, markets/shops are selected within a single geographical location, where there is at least one wholesaler operating in the market.

Participating organisations train their enumerators on the JMIMI methodology and data collection tools using standard training materials developed by REACH. Each month, enumerators conduct KI interviews with market vendors to collect three price quotations for each item from the same market in each district. In addition to price levels, vendors are asked about the location of their supplier, the number of days it takes to restock the items, and the constraints they are facing in purchasing and selling the items in question. Additional questions are included for water trucking, to gauge the impact of delivery distance upon price level.

Following data collection, REACH compiles and cleans all partner data, normalising prices and cross-checking outliers. The cleaned data is then analysed by commodity and by governorate. To illustrate local variations in prices and availability, REACH uses the collected data to map the price of each type of item in each district. REACH also calculates the WASH SMEB (Survival Minimum Expenditure Basket), which is composed of four items: soap (1.05 kg), laundry powder (2 kg), sanitary napkins (50 units) and water trucking (3.15 m3). Food SMEB contains 75 kg of wheat flour, 10 kg of beans (kidney), 8L of vegetable oil, 2.5 kg of sugar, and 1 kg iodized salt.

The cleaned data sets are available on the [REACH Resource Centre](#) and are distributed to all participating partners, as well as to relevant clusters and the broader humanitarian community.

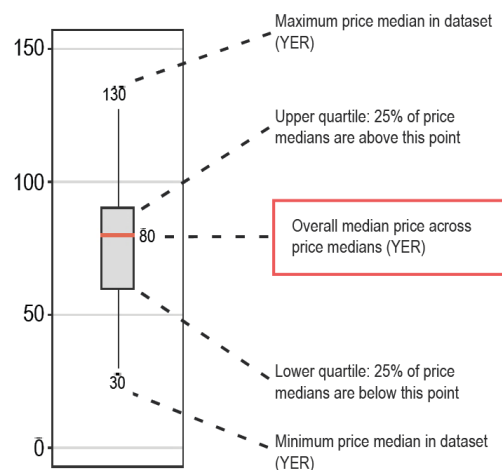
Limitations

Due to issues of access and security across Yemen, the districts included in the JMIMI vary on a monthly basis, and as such there are sometimes a limited number of districts for which trends can be assessed over time. Governorate level data is aggregated from the respective districts assessed in a given month, and so the findings are not representative of individual markets. Finally, the market monitoring process has been coordinated remotely by REACH, which inherently presents some challenges in terms of coordination and follow-up with partners. Participating organisations are therefore requested to adopt harmonised data collection methodologies and tools to ensure that the data uploaded is as accurate as possible.

Calculation of district and governorate median price

The calculation of the aggregated median price for districts and governorates is done following a stepped approach. Firstly, the median of all the price quotations related to the same market is taken. Secondly, the median quotation from each market is aggregated to calculate the district median. Finally, the median quotation from each district is aggregated to calculate the governorate median. Additionally, district and governorate median prices and percentage change from one month to another are calculated only on data from markets that were assessed in both consecutive months. Therefore, part of the percentage variation should be attributed to changes in monthly coverage when registered.

How to read a box plot



ABOUT REACH

REACH is a joint initiative that facilitates the development of information tools and products that enhance the capacity of aid actors to make evidence-based decisions in emergency, recovery and development contexts. By doing so, REACH contributes to ensuring that communities affected by emergencies receive the support they need. All REACH activities are conducted in support to and within the framework of inter-agency aid coordination mechanisms. For more information, please visit our website at www.reach-initiative.org, contact us directly at ahmet.damar@reach-initiative.org or follow us on Twitter at [@REACH_info](https://twitter.com/REACH_info).

Participating partners include



Number of districts assessed per governorate

| Governorate | Assessed districts |
|-------------|--------------------|
| Abyan | 1 |
| Aden | 4 |
| Al Dhale'e | 3 |
| Al Hudaydah | 3 |
| Al Jawf | 1 |
| Amran | 2 |
| Dhamar | 1 |
| Hadramaut | 3 |
| Hajjah | 9 |
| Ibb | 1 |
| Lahj | 7 |
| Marib | 1 |
| Sana'a | 1 |
| Sana'a City | 6 |
| Shabwah | 1 |
| Taizz | 12 |