



Introduction

The Yemen Joint Market Monitoring Initiative (JMMI) was launched by REACH in collaboration with the Water, Sanitation, and Hygiene (WASH) Cluster and the Cash and Market Working Group (CMWGW) to support humanitarian actors with the harmonization of price monitoring among all cash actors in Yemen. The JMMI incorporates information on market systems including price levels and supply chains. The basket of goods to be assessed includes ten non-food items (NFIs), such as fuel, water, and hygiene products, reflecting the programmatic areas of the WASH Cluster. The JMMI tracks all components of the WASH and Food Survival Minimum Expenditure Basket (SMEB) as well as other food and non-food items. In light of the current COVID-19 pandemic, REACH has adapted the JMMI to begin assessing the potential impact of the pandemic on markets and on respondents' businesses.

Methodology

Data was collected through interviews with vendor key informants (KIs), selected by partner organisations from markets of various sizes in both urban and rural areas. Following data collection, REACH compiles, cleans and analyzes all data, through detailed follow-ups with partners. Findings are indicative for the assessed locations and time frame in which the data was collected. From April to September 2020, data for the JMMI was collected on a bi-weekly basis to better track disruptions caused by COVID-19. COVID-specific JMMI factsheets were produced bi-weekly, and a more comprehensive situation overview using data from both factsheets was produced monthly. After discussion with the CMWGW, REACH resumed data collection on a monthly basis in September, and resumed producing one monthly situation overview. Please refer to the appendix for additional methodological details.

JMMI monthly figures

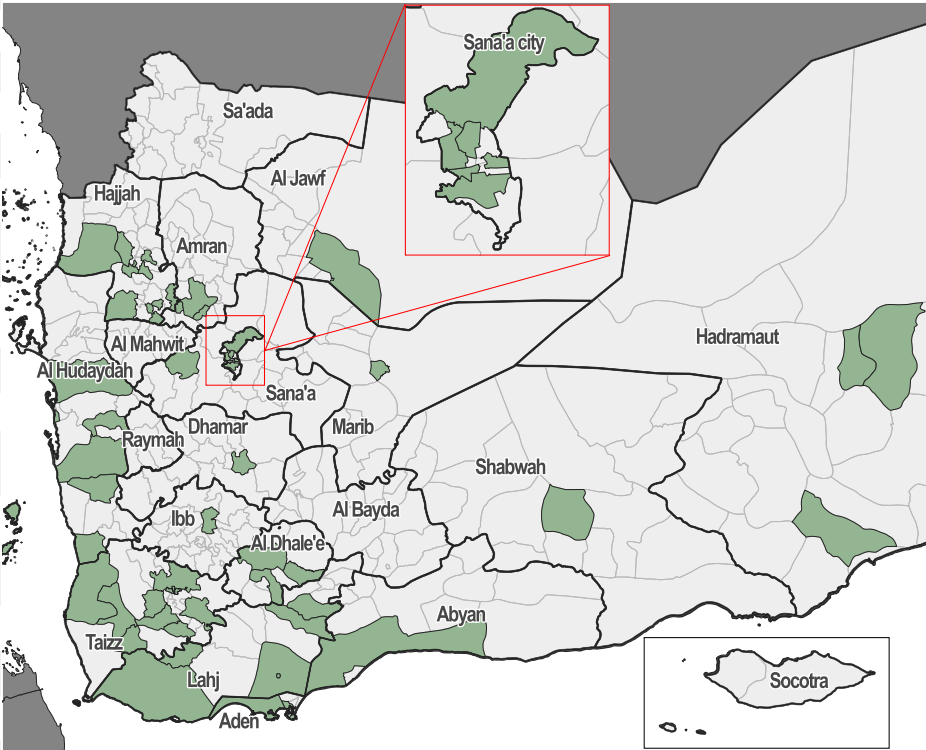
Data collection 7 March - 11 March
15 Participating partners
16 Governorates assessed
57 Districts assessed
225 Vendor KIs surveyed

Table with 4 columns: Assessed items, Feb 2021 prices in YER, Mar 2021 prices in YER, Change (from Feb 2021). Rows include Full SMEB* (dry beans), WASH SMEB**, Soap, Laundry powder, Sanitary napkins, Water trucking, Petrol, Diesel, Bottled water, Treated water, Bleach, Cooking gas, Food SMEB (dry beans), Food SMEB (canned beans), Wheat flour, Rice, Dry kidney beans, Canned kidney beans, Lentils, Vegetable oil, Sugar, Salt, Potatoes, Onions.

* Includes WASH and food SMEB; excludes cooking gas, NFI/Shelter and Services.
** Contains soap (1.05 kg), laundry powder (2 kg), sanitary napkins (50 units), and water (3.15 m3).
Sanitary napkins' units were changed from 20 to 50 based on CMWGW's September SMEB revision.
^ Contains wheat flour (75 kg), dry beans (10 kg), vegetable oil (8 L), sugar (2.5 kg), salt (1 kg)
§ Contains wheat flour (75 kg), canned beans (36 cans), vegetable oil (8 L), sugar (2.5 kg), salt (1 kg)

Key findings

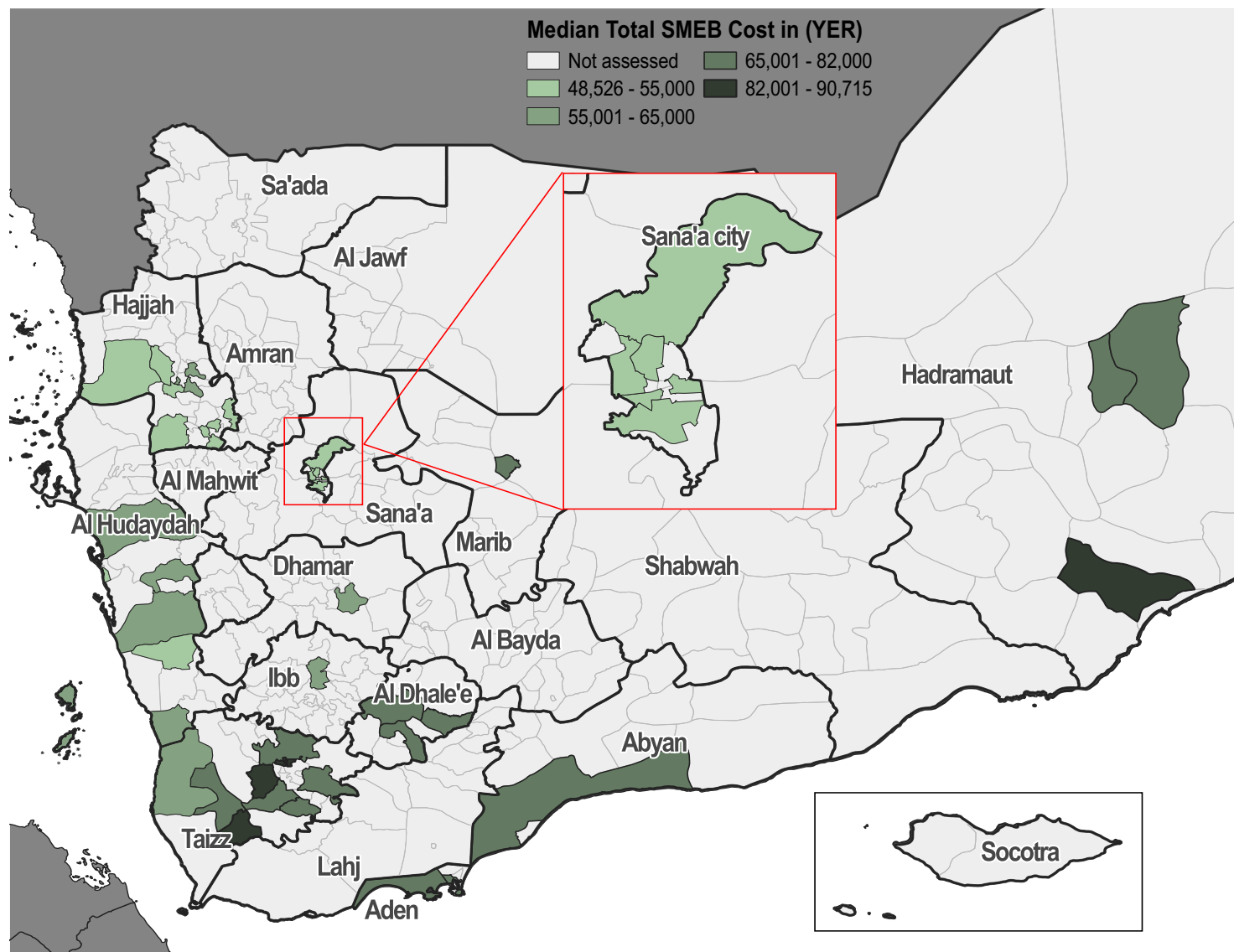
- Overall, exchange rates have increased: The median national exchange rate remained stable with 600 Yemeni Riyal (YER) to one US dollar (USD). The lowest exchange rate was recorded in Marib (580 YER to 1 USD). The highest exchange rate was recorded in Hadramaut (912 YER to 1 USD), followed by Aden governorate (895 YER to 1 USD).
- The average reported restocking time for food items has increased, after a noticeable decrease was observed in the last round of data collection in February.
- The reported number of business closures in the last 2 weeks within a 2 minute walk from KIs' stalls decreased considerably to reach 78 markets compared to last round in February with a total of 204 businesses reported to be closed around the assessed markets.
- Price inflation remains the most commonly reported constraint faced by the assessed vendors when obtaining fuel, WASH items, food items, and water trucking services.
- The food SMEB cost (with dry beans) was found to have increased by 2.3% since the last round of data collection in February, and the WASH SMEB cost remained the same as last round, contributing to a 1.7% increase in the overall SMEB cost.
- Overall, 15% of KIs reported that their supply routes changed in a way harmful to their business in the 30 days prior to data collection.



Exchange Rate

Table with 5 columns: Exchange Rate, USD/YER, Parallel Market rate (in DFA), Parallel Market rate (in IRG), Parallel Market rate (in IRG). Rows include Official, Parallel market (in DFA), Parallel Market rate (in DFA), Parallel Market rate (in IRG), Parallel Market rate (in IRG).

Total SMEB prices (7-11 March 2021)*, ^



*Total SMEB cost in the legend represents the calculated food basket cost with dry beans.

^ Red outlines over districts indicate the districts for which outliers were recorded.

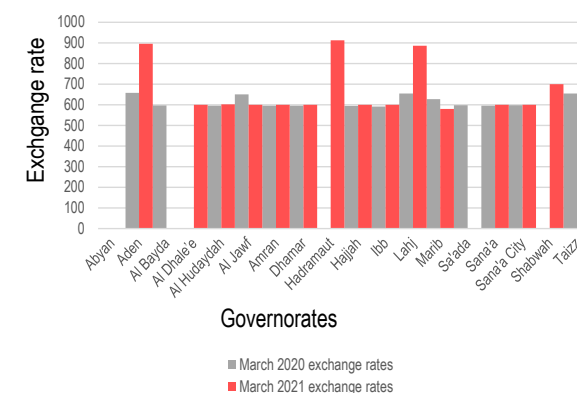
Exchange rate (YER/USD)*

Governorate	March 2020 [^]	February 2021	March 2021
Abyan	NA	(860)	(885)
Aden	658	845	895 (894)
Al Bayda	596	NA	NA
Al Dhale'e	NA	840	600 (895)
Al Hudaydah	595	590 (840)	602 (900)
Al Jawf	650	600	600
Amran	595	592	600
Dhamar	595	597	600
Hadramaut	NA	879	912 (897)
Hajjah	594	592	600
Ibb	592	590	600
Lahj	654	847	886 (890)
Marib	628	820	580 (890)
Sa'ada	598	NA	NA
Sana'a	595	592	600
Sana'a City	598 (628)	591	600
Shabwah	NA	860	700 (800)
Taizz	654	830	885

*New banknote exchange rates / Exchange rate for the new currency released last year is in parenthesis.

[^]March was chosen as a baseline to assess the effect of COVID-19 on exchange rates.

Exchange rate in March 2020 and March 2021 (YER/USD)*



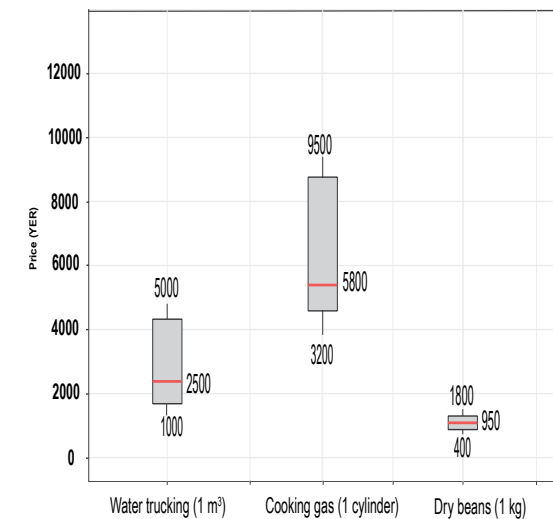
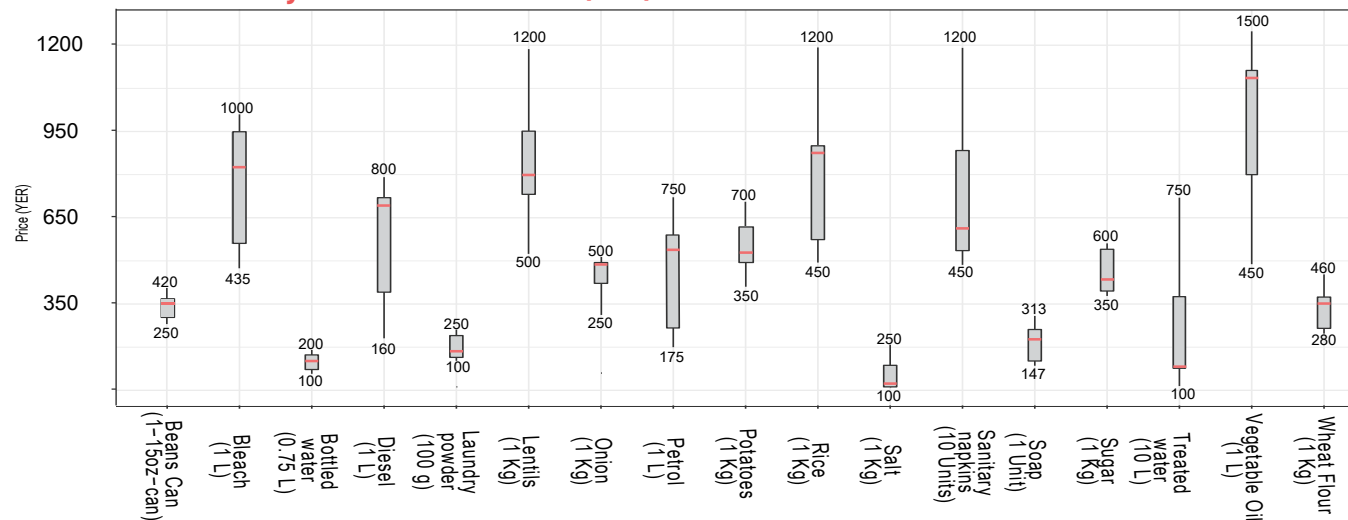
*Governorate labels point to two bars indicating March 2020 base values and March 2021 values. Gaps between bars indicates that no exchange rate value was recorded in this governorate.

Price per key item, per governorate (YER)*

Governorate	Petrol (1L)	Diesel (1L)	Cooking gas (1 cylinder)	Bottled water (0.75L)	Treated water (10L)	Bleach (1L)	Soap (100g)	Laundry powder (100g)	Sanitary napkins (10 units)	Water trucking (1m³)	WASH SMEB	Wheat flour (1Kg)	Rice (1Kg)	Beans dry (1Kg)	Beans cans (15oz)	Lentils (1 Kg)	Vegetable oil (1L)	Sugar (1Kg)	Salt (1Kg)	Potatoes (1Kg)	Onions (1 Kg)	Food SMEB (Dry Beans)	Food SMEB (Canned beans)
Abyan	525	675	4500	100	100	1000	263	100	700	2000	14562	435	1000	1000	400	NA	1500	600	100	500	500	56225	60625
Aden	550	750	6000	100	250	900	250	150	650	5000	24625	450	1020	850	383	1000	1200	500	125	500	400	53225	58513
Al Dhale'e	545	410	4000	150	150	750	165	150	700	4000	20833	410	913	900	400	800	1325	460	150	700	500	51650	57050
Al Hudaydah	650	700	9500	150	150	435	150	125	500	3000	16025	460	800	400	300	450	450	400	110	400	400	43210	50010
Al Jawf	500	600	4000	200	NA	550	250	200	1200	1300	16720	280	500	NA	350	NA	1000	500	100	550	500	NA	42950
Amran	NA	NA	NA	120	100	700	150	136	500	1000	9945	300	600	NA	300	600	760	350	150	500	500	NA	40405
Dhamar	700	650	7000	150	600	800	163	120	650	1875	13268	260	850	1000	300	700	1500	400	100	350	300	42600	43400
Hadramaut	500	500	3500	150	750	1000	313	148	800	4000	22847	460	800	850	420	1200	1450	460	250	500	500	56000	62620
Hajjah	750	800	8672	150	100	800	150	130	500	2500	14550	300	850	400	300	800	900	400	100	500	500	34800	41600
Ibb	675	775	5000	100	100	750	200	150	600	3000	17550	400	500	1000	280	750	600	500	100	600	400	46150	46230
Lahj	525	750	5800	100	100	1000	250	140	700	2300	16170	420	1075	NA	400	950	1250	485	125	500	400	NA	57238
Marib	175	160	3200	100	100	950	160	153	619	1000	10985	368	600	1500	300	750	1300	500	150	500	500	54363	50163
Sana'a	NA	NA	4900	120	100	700	200	109	450	1400	10940	300	450	NA	250	500	938	400	100	450	300	NA	40104
Sana'a City	600	650	4850	100	120	680	147	105	500	1160	9782	300	900	1000	280	500	778	360	100	500	500	39724	39804
Shabwah	500	600	4500	100	150	800	200	250	550	4000	22450	300	550	NA	350	900	1100	500	100	200	250	NA	45250
Taizz	575	730	5500	190	100	1000	200	160	700	2500	16675	440	775	1800	404	900	1400	500	120	650	400	63570	60114
National median price	575	700	5800	150	100	845	200	140	600	2500	15775	380	800	950	350	800	1100	435	120	500	500	48025	51125

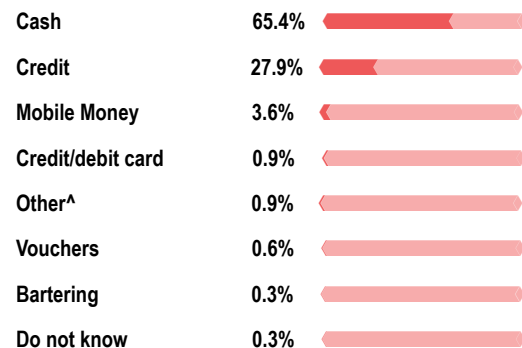
*Darker color strokes indicate high outliers for each commodity, lighter color strokes indicate the low outliers of each commodity.

Price distribution of key items across Yemen (YER)



WASH SMEB*

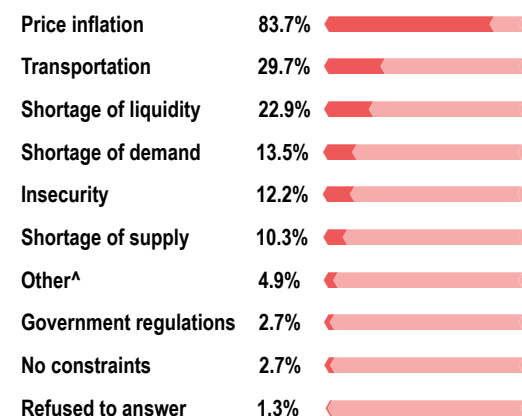
WASH vendor KIs reported accepting the following payment modalities*



*Values do not add up to 100% as vendor KIs were allowed to select multiple options.

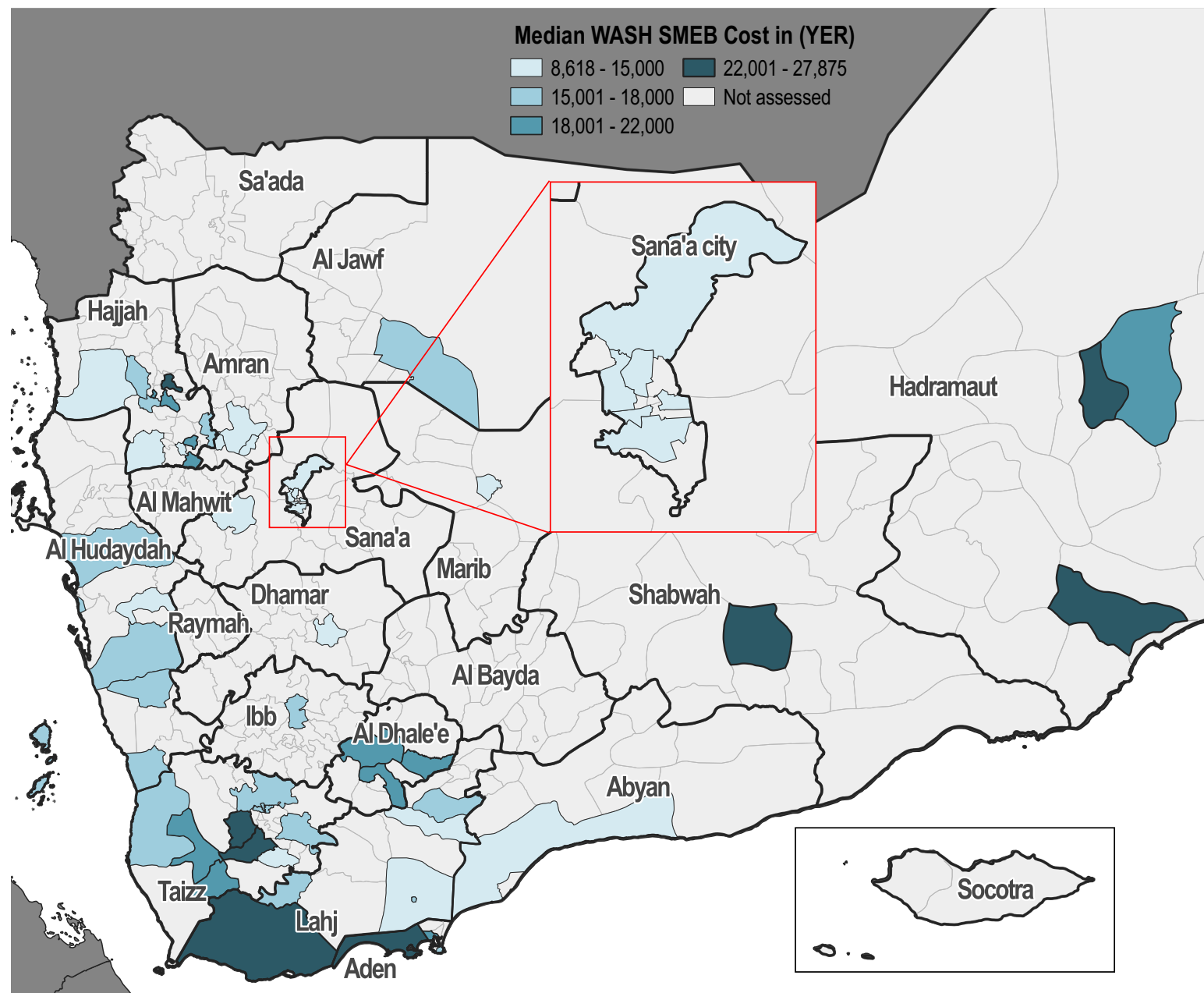
^Includes bank transfers.

Most commonly reported constraints, by % of WASH vendor KIs*



*Values do not add up to 100% as vendor KIs were allowed to select multiple options.

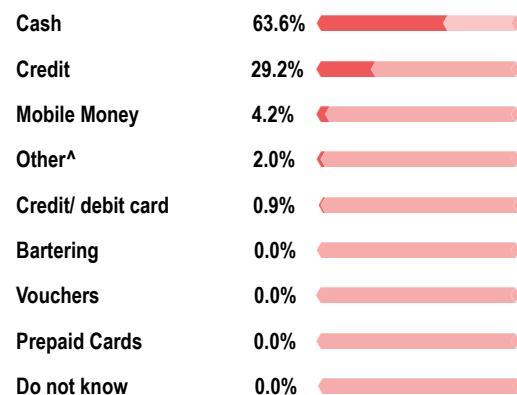
^Includes increased currency fluctuations, loss of vendors in the area, and additional fees.



*Red outlines over districts indicate the districts for which outliers were recorded.

Food SMEB*

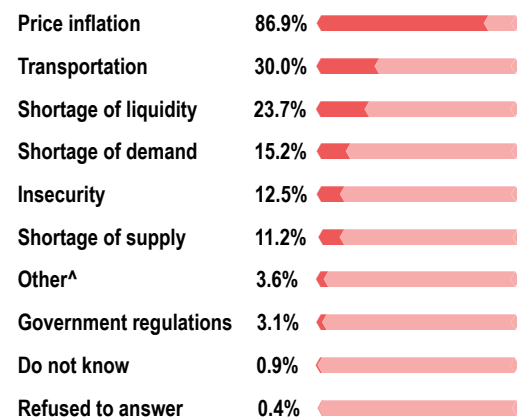
Food vendor KIs reported accepting the following payment modalities*



*Values do not add up to 100% as vendor KIs were allowed to select multiple options.

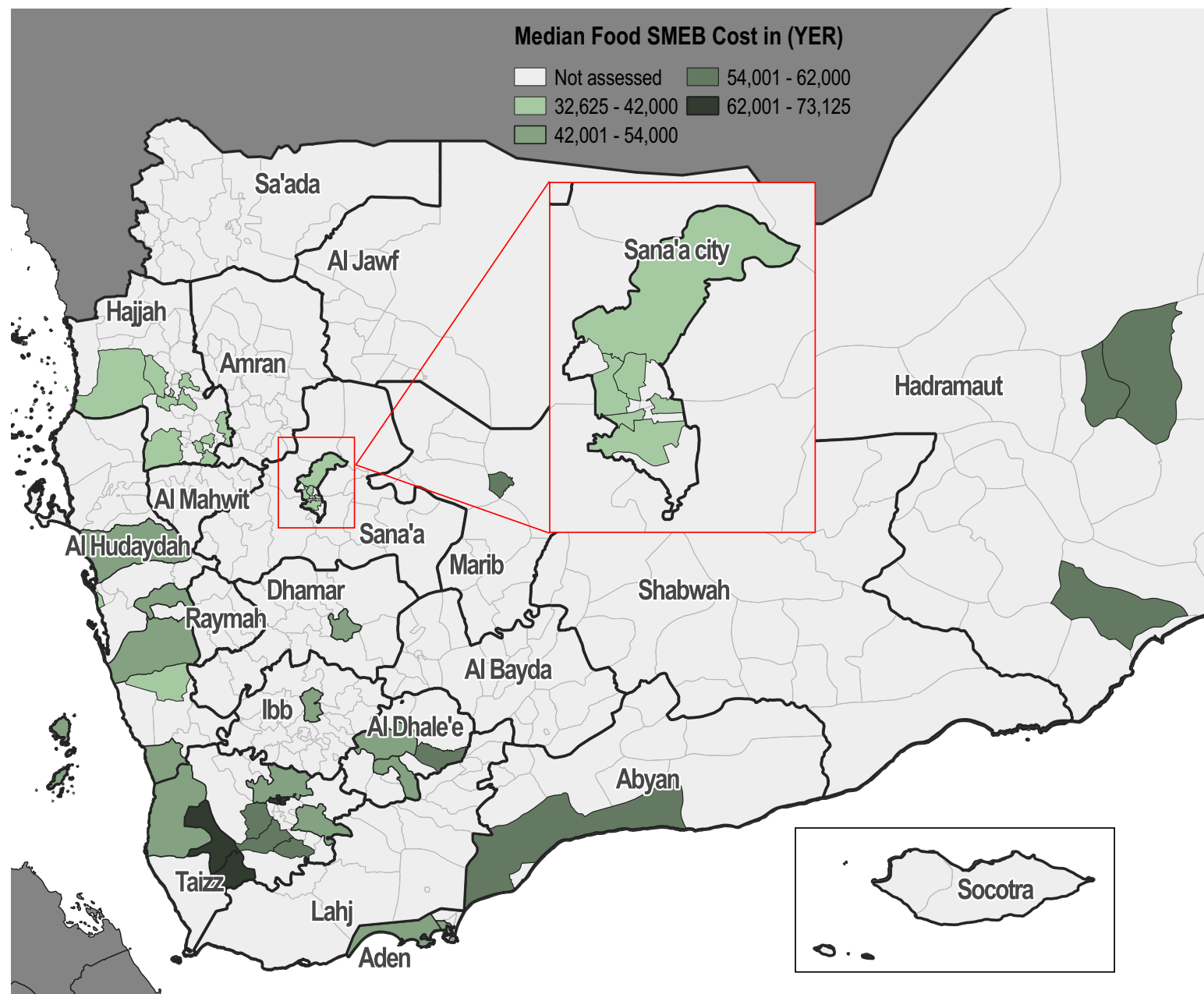
^Includes bank transfers.

Most commonly reported constraints, by % of food vendor KIs*



*Values do not add up to 100% as vendor KIs were allowed to select multiple options.

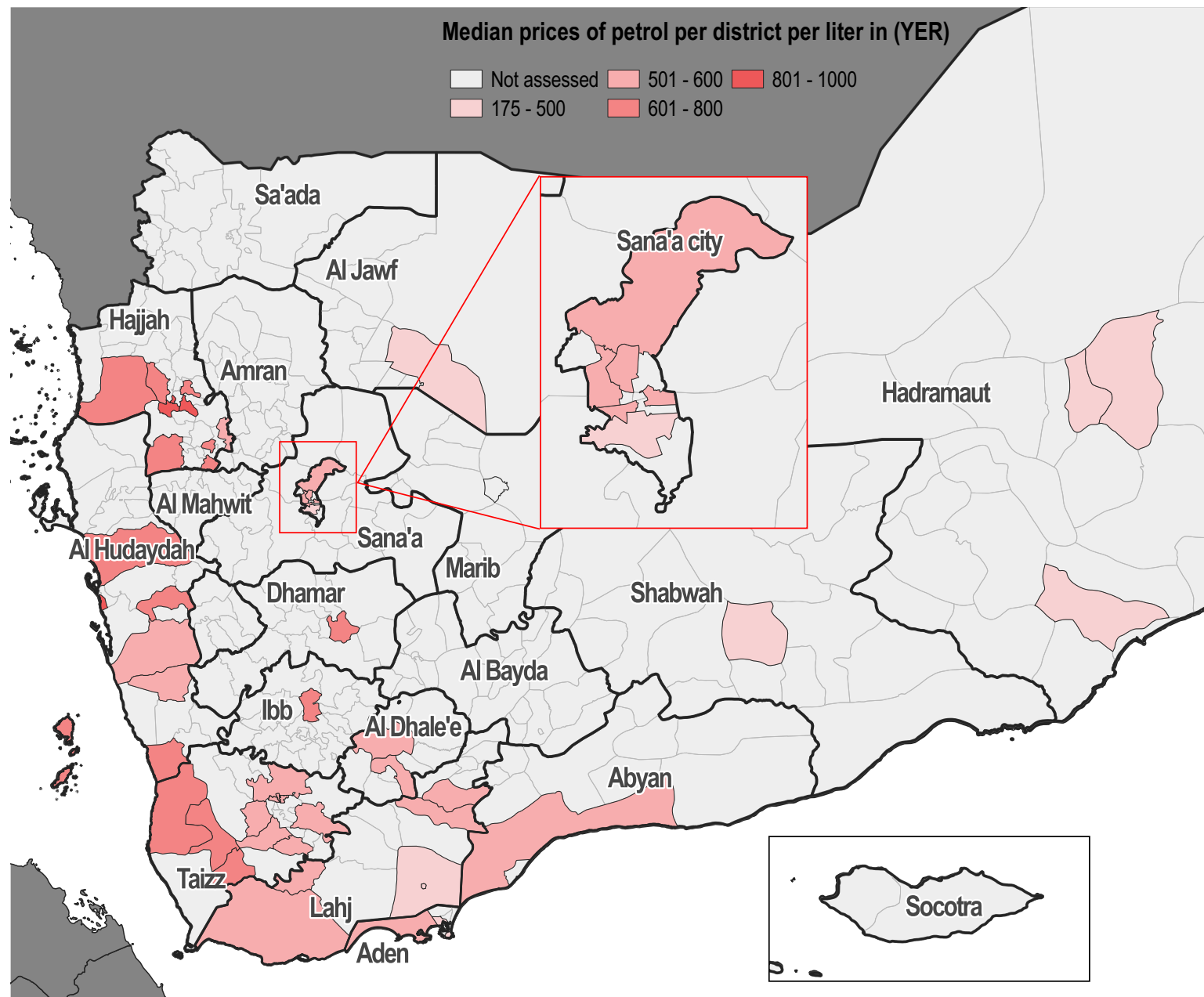
^Includes increased currency fluctuations, lack of oil derivatives, and additional fees.



*Total SMEB cost in the legend represents the calculated food basket cost with dry beans.

Median prices of petrol per district per liter in (YER)

Not assessed 501 - 600 801 - 1000
175 - 500 601 - 800



Fuel vendor KIs reported accepting the following payment modalities*

Cash	81.1%	<div></div>
Credit	16.3%	<div></div>
Vouchers	1.2%	<div></div>
Prepaid cards	0.8%	<div></div>
Mobile money	0.4%	<div></div>
Credit/dept	0%	<div></div>
Bartering	0%	<div></div>
Other	0%	<div></div>

*Values do not add up to 100% as vendor KIs were allowed to select multiple options.

Most commonly reported constraints, by % of fuel vendor KIs*

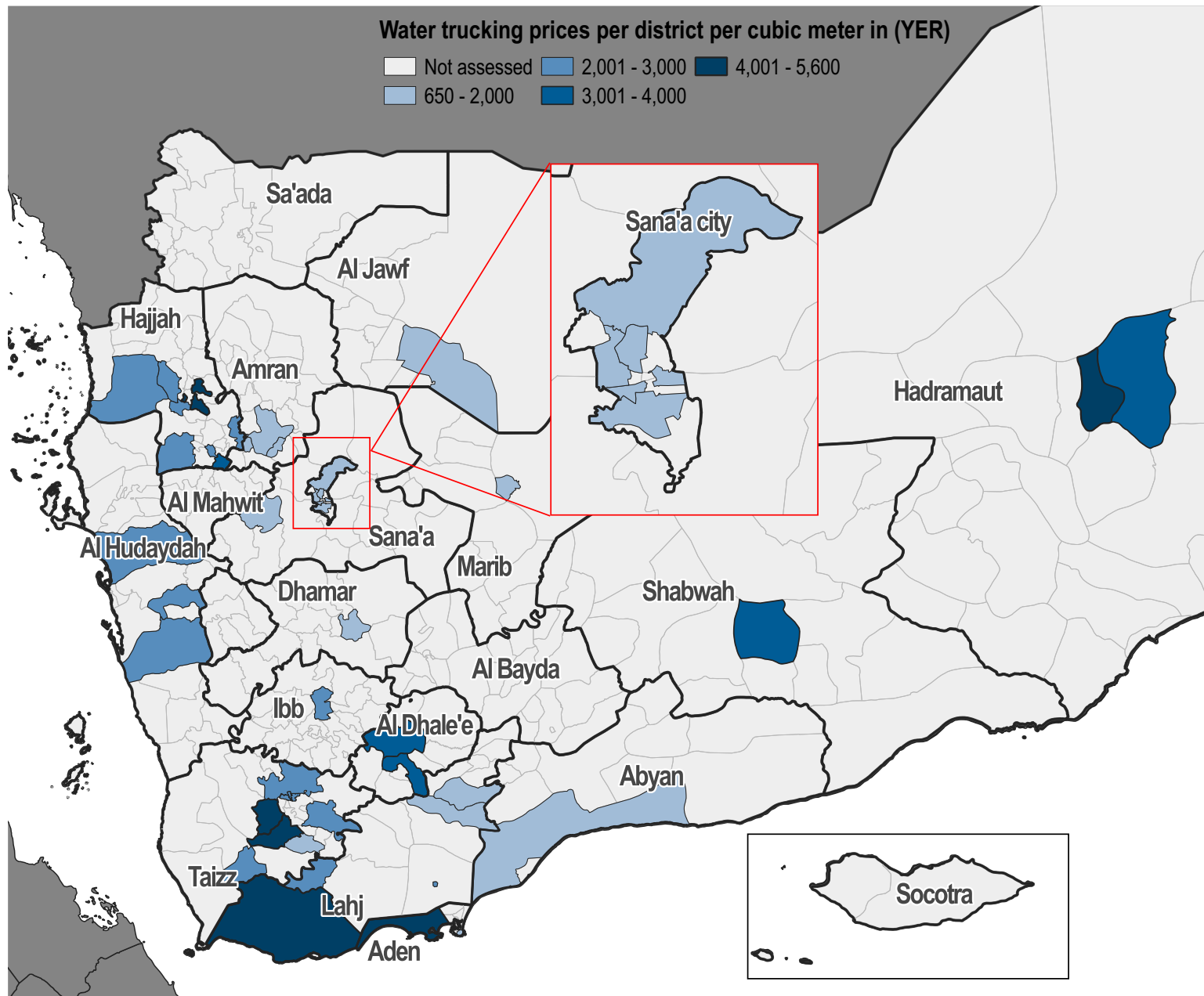
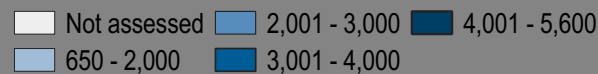
Price inflation	80.4%	<div></div>
Transportation	37.1%	<div></div>
Shortage of liquidity	24.7%	<div></div>
Shortage of supply	22.7%	<div></div>
Shortage of demand	12.8%	<div></div>
Insecurity	12.4%	<div></div>
Government regulations	5.1%	<div></div>
No constraints	4.6%	<div></div>
Other^	3.6%	<div></div>
Refused to answer	0.5%	<div></div>

*Values do not add up to 100% as vendor KIs were allowed to select multiple options.

^Includes increased currency fluctuations, loss of vendors in the area, and additional fees.

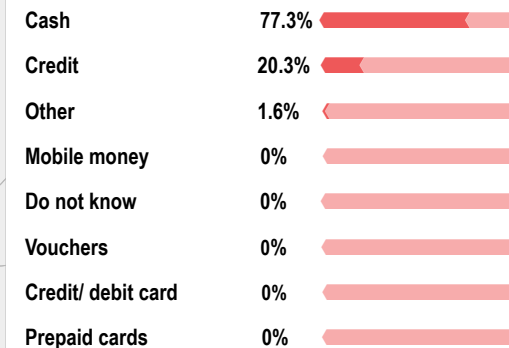
Water Trucking

Water trucking prices per district per cubic meter in (YER)



*Red outlines over districts indicate the districts for which outliers were recorded.

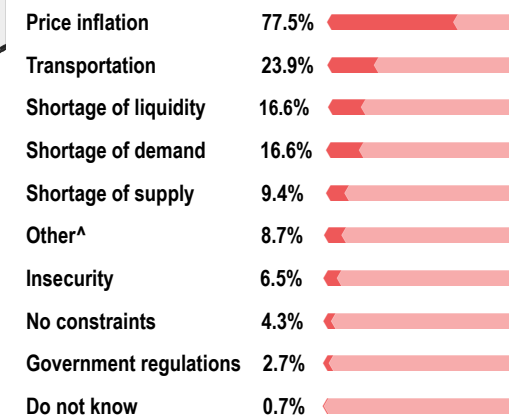
Water trucking vendor KIs reported accepting the following payment modalities*



*Values do not add up to 100% as vendor KIs were allowed to select multiple options.

^Includes bank transfers.

Most commonly reported constraints, by % of water trucking vendor KIs*



*Values do not add up to 100% as vendor KIs were allowed to select multiple options.

^Includes increased currency fluctuations, loss of vendors in the area, and additional fees.

SUPPLY CHAIN OVERVIEW FOR YEMEN

Median price of goods originating from Aden and al Hudaydah

Vendor KIs were asked about the origin of various products sold in their stores. The two main ports of origin for these products were Aden and al Hudaydah. The table below shows the median price of goods originating from these two ports.

Item	Al Hudaydah (price in YER)	Aden (price in YER)
Petrol (1L)	700	550
Diesel (1L)	700	710
Cooking Gas (1 cylinder)	10000	5500
Bottled water (0.75L)	150	200
Treated water (10L)	100	130
Soap (100g)	150	220
Laundry Powder (100g)	145	150
Sanitary Napkins (10 units)	500	700
Wheat Flour (1kg)	500	500
Rice (1kg)	800	1200
Beans Dry (1kg)	400	2000
Beans Can (15oz can)	300	396
Lentils (1kg)	425	1000
Vegetable Oil (1L)	450	1500
Sugar (1kg)	400	550
Salt (1kg)	120	140
Potatoes (1kg)	400	550
Onions (1kg)	400	350
Bleach (1L)	600	900
Water trucking (1m ³)	2500	3000

Average reported restocking time (days)*^

Governorate	Fuel Items	WASH Items	Food Items
Abyan	6 (5)	4 (3)	4 (2)
Aden	4 (2)	3 (2)	3 (0)
Al Dhale'e	3 (2)	1 (2)	2 (0)
Al Hudaydah	10 (8)	17 (7)	11 (1)
Al Jawf	3 (4)	3 (2)	3 (2)
Amran	NA (4)	3 (5)	5 (1)
Dhamar	NA	1 (1)	2 (0)
Hadramaut	4 (4)	9 (4)	6 (0)
Hajjah	9 (5)	7 (4)	6 (1)
Ibb	3 (4)	3 (4)	3 (0)
Lahj	6 (3)	6 (4)	8 (1)
Marib	3 (3)	3 (6)	8 (3)
Sana'a	5 (2)	2 (2)	2 (0)
Sana'a City	4 (2)	3 (2)	3 (0)
Shabwah	3 (12)	2 (2)	3 (10)
Taizz	5 (7)	6 (7)	6 (0)

*Previous average restocking time (February 2020) in days between brackets.

^N/A indicates that the specific question was not answered by the KIs.

Vendor capacity to respond to a sudden increase in demand: Proportion of vendors able to absorb a 50% and 100% increase in demand for key items*

To understand vendor capacity to cope with sudden increases in the demand for water trucking, fuel, and WASH items, vendor KIs were asked if they would be able to increase their stock by 50% and 100% respectively.

Effect of supply route changes on businesses

Overall, 15.1% of vendor KIs (34/225) reported having faced supply chain disruptions in the 30 days prior to data collection. Those vendors were asked which supply chain issues they had faced (see graph on the right).

Most commonly reported supply chain issues*

Damage to market area	55.9%
Movement restriction	41.1%
Damage to market facility	35.3%
Other	17.4%

*Values do not add up to 100% as vendor KIs were allowed to select multiple options.

^Other includes: "Lack of oil derivatives" and "high exchange USD/YER rate".

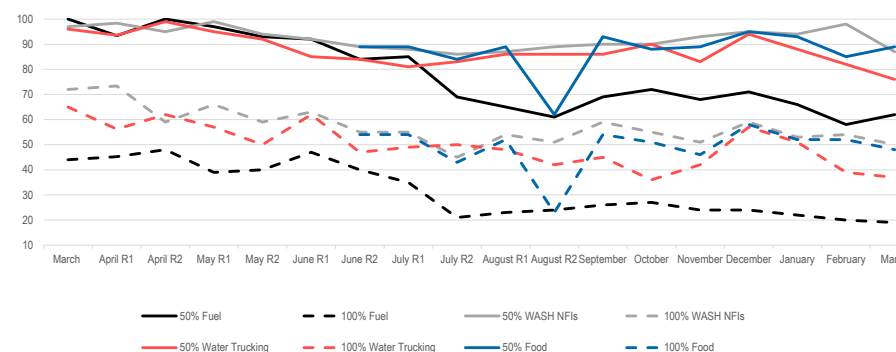
Damaged infrastructure affecting vendor capacity to conduct business

The 23 vendor KIs who reported "damage to the market area" and/or "damage to the market facility" as concerns affecting their capacity to run their businesses were then asked which type of infrastructure was most damaged.

Most commonly reported infrastructure damage*

Road	82.6%
Electrical	78.2%
Water	69.5%
Communication	08.6%

*Values do not add up to 100% as vendor KIs were allowed to select multiple options.



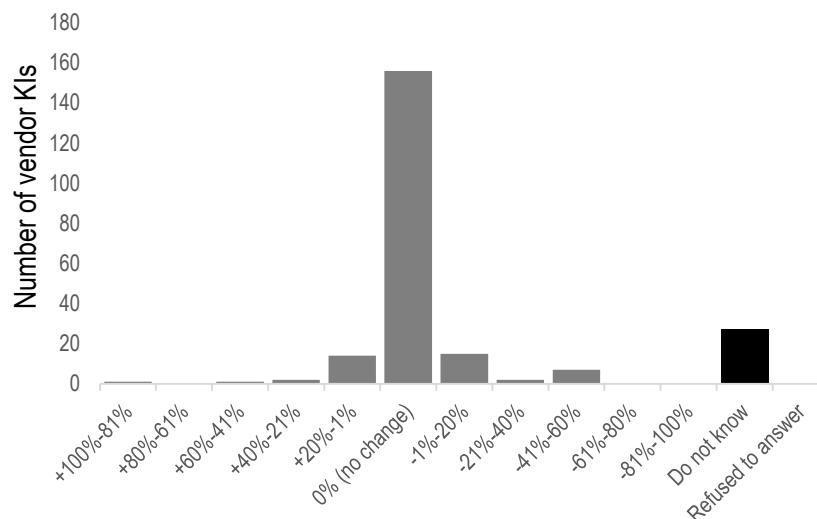
*Between April and August 2020, two rounds of data collection were held each month to monitor the foreseen more rapid changes as a result of the COVID-19 pandemic and restrictions

Impact of COVID-19 on respondents' businesses

Reported estimated change in number of customers in the two weeks prior to data collection

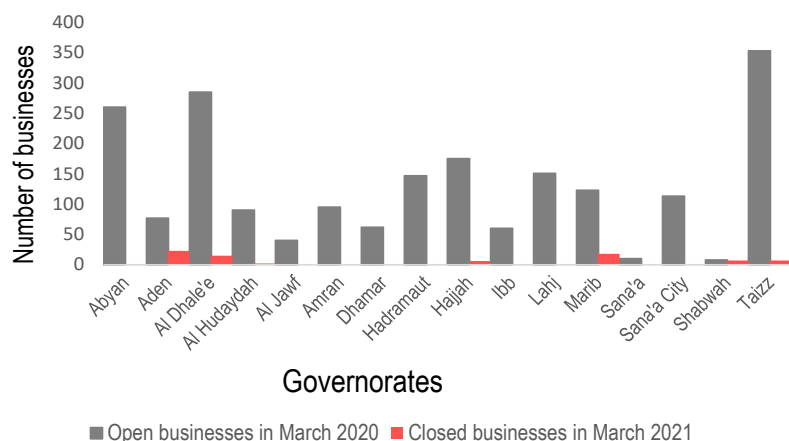
Overall, the majority of vendor KIs (69.3%) reported having perceived no change in the number of customers in the two weeks prior to data collection. Less vendors reported having experienced a change in customers, be it either a decrease (8.0% or 18/336 vendors) or increase (10.7%, or 24/336 vendors) of customers.

Of the 336 vendor KIs surveyed, 2.3% (8/336) reported having faced difficulties obtaining key commodities due to disruptions caused by COVID-19 measures in the two weeks prior to data collection (compared to 5.4% reporting this during previous round of data collection in February).



Average number of businesses closures by governorate^

The reported number of businesses within a 2 minute walk from vendor KIs' stalls being closed in the two weeks prior to data collection (78 businesses) decreased by 61.7% compared to the last round of data collection in February (204 businesses).



Average reported number of nearby businesses that were open in March 2020^



9 in February

[^]Average number of businesses within a two minute walk from KIs' businesses that were reportedly open in early March 2020.

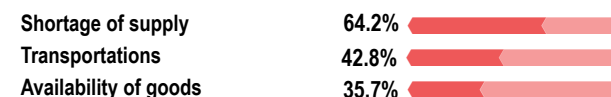
Average reported number of nearby businesses that were closed^



1 in February

[^]Average number of businesses within a two minute walk from KIs' businesses that were reportedly closed due to COVID-19 in the two weeks prior to data collection.

Top 3 COVID-19 related constraints*

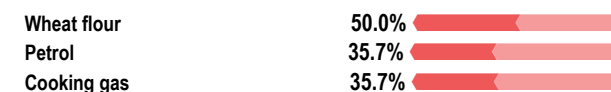


Results from the previous JMIMI round (8 -12 February)



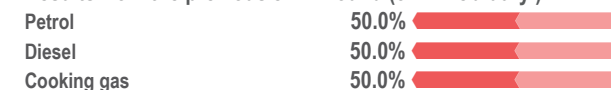
*Based on the responses from the 2.3% (8 out of 336) of vendor KIs who had difficulties obtaining goods due to COVID-19.

Top 3 most difficult goods to obtain*^



* There were no other goods for which 50% of vendors had reported difficulties.

Results from the previous JMIMI round (8 -12 February)



[^]Based on the responses from the 2.3% (8 out of 336) of vendor KIs who had difficulties obtaining goods due to COVID-19.

ABOUT REACH'S COVID-19 RESPONSE

As an initiative deployed in many vulnerable and crisis-affected countries, REACH is deeply concerned by the devastating impact the COVID-19 pandemic may have on the millions of affected people we seek to serve. REACH is currently working with Cash Working Groups and partners to scale up its programming in response to this pandemic, with the goal of identifying practical ways to inform humanitarian responses in the countries where we operate. COVID-19-relevant market monitoring and market assessments are a key area where REACH aims to leverage its existing expertise to help humanitarian actors understand the impact of changing restrictions on markets and trade. Updates regarding REACH's response to COVID-19 can be found in [a devoted thread](#) on the REACH website. Contact geneva@impact-initiatives.org for further information.

DISTRICTS COVERED

Governorate	District	Petrol price	Water Trucking	SMEB WASH	SMEB Food	SMEB Total	Fuel: Supplier Governorate	Fuel: Total number of respondents^	WASH: Supplier Governorate	WASH: Total number of respondents^	Food: Supplier governorate	Food: Total number of respondents^
Hajjah	Abs	750	2500	14950	34125	49075	7/7	Al Hudaydah	7/8	Al Hudaydah	7/8	Al Hudaydah
Al Dhale'e	Ad Dhale'e	545	4000	21175	51750	72925	8/8	Aden	4/5	Al Dhale'e	6/8	Al Dhale'e
Lahj	Al Hawtah	500	2400	18000	NA	NA	3/3	Aden	3/3	Aden	3/3	Aden
Taizz	Al Mukha	640	NA	17583	46135	63718	6/6	Aden	6/6	Aden	6/6	Aden
Aden	Al Buraiqeh	550	5000	23100	52400	75500	5/5	Aden	5/5	Aden	5/5	Aden
Al Hudaydah	Al Hawak	900	NA	15820	36300	52120	NA	NA	NA	NA	3/3	Sana'a city
Sana'a	Al Haymah Ad	NA	1400	10940	NA	NA	3/3	Al Hudaydah	3/3	Sana'a	3/3	Sana'a city
Al Jawf	Al Hazm	500	1300	16720	NA	NA	3/3	Marib	3/3	Sana'a	3/3	Sana'a
Al Hudaydah	Al Khawkhah	620	NA	17449	46950	64399	3/3	Aden	3/3	Aden	3/3	Aden
Taizz	Al Ma'afer	550	15000	55790	55846	111636	3/5	Aden	3/5	Taizz	3/5	Taizz
Lahj	Al Madaribah Wa	550	5600	26931	NA	NA	3/3	Aden	3/3	Aden	3/3	Aden
Hajjah	Al Mahabishah	1000	4167	20226	36800	57026	4/5	Hajjah	8/8	Hajjah	6/8	Hajjah
Ibb	Al Makhadir	675	3000	17550	46150	63700	1/3	Taizz	3/3	Ibb	3/3	Ibb
Aden	Al Mansura	400	NA	19650	51900	71550	3/3	Aden	3/3	Aden	3/3	Aden
Lahj	Al Maqatirah	550	2100	16120	NA	NA	3/3	Aden	3/3	Aden	3/3	Aden
Taizz	Al Mawasit	550	2000	14554	55275	69829	NA	NA	2/3	Taizz	2/3	Taizz
Taizz	Al Mudhaffar	575	2333	17199	70005	87204	3/3	Aden	3/3	Aden	3/3	Aden
Hadramaut	Al Mukalla	500	NA	27875	59800	87675	3/3	Hadramaut	3/3	Hadramaut	3/3	Hadramaut
Taizz	Al Qahirah	575	2333	17514	71005	88519	3/3	Aden	3/3	Aden	3/3	Aden
Sana'a City	Al Wahdah	600	650	8618	39908	48526	2/3	Al Hudaydah	2/3	Sana'a city	2/3	Sana'a city
Taizz	Al Wazi'iyah	630	3000	19475	63650	83125	3/5	Taizz	3/5	Taizz	4/5	Taizz
Amran	Amran	NA	1375	11156	NA	NA	NA	NA	5/6	Sana'a	NA	NA
Sana'a City	As Sabain	295	1600	11307	38550	49857	2/3	Sana'a city	3/3	Sana'a city	3/3	Sana'a
Al Hudaydah	As Sukhnah	650	2500	14350	46220	60570	3/3	Al Hudaydah	3/3	Al Hudaydah	3/3	Al Hudaydah
Al Dhale'e	Ash Shu'ayb	NA	NA	20074	54533	74607	NA	NA	3/3	Aden	3/3	Aden
Hajjah	Aslem	750	2500	15275	34950	50225	3/5	Al Hudaydah	4/6	Al Hudaydah	4/6	Al Hudaydah
Taizz	At Ta'iziyah	600	3000	16550	51275	67825	1/2	Taizz	3/3	Taizz	3/3	Taizz
Shabwah	Ataq	500	4000	22450	NA	NA	3/3	Sana'a	3/3	Sana'a	3/3	Sana'a
Sana'a City	Ath'thaorah	600	1100	9225	39475	48700	3/3	Sana'a	3/3	Sana'a	3/3	Sana'a
Sana'a City	Az'zal	600	1200	9540	39600	49140	3/3	Sana'a	3/3	Sana'a	3/3	Sana'a
Al Hudaydah	Bajil	700	3000	16480	46720	63200	3/3	Al Hudaydah	3/3	Al Hudaydah	3/3	Al Hudaydah
Hajjah	Bani Al Awam	725	4000	19574	33675	53249	NA	NA	2/3	Hajjah	2/3	Hajjah
Sana'a City	Bani Al Harith	600	1184	9488	39475	48963	3/3	Sana'a	3/3	Sana'a	3/3	Sana'a
Hajjah	Bani Qa'is	750	2500	14950	36638	51588	6/6	Al Hudaydah	6/6	Al Hudaydah	6/6	Al Hudaydah
Al Hudaydah	Bayt Al Faqiah	600	3000	15925	46220	62145	3/3	Al Hudaydah	3/3	Al Hudaydah	3/3	Al Hudaydah
Aden	Craiter	400	2000	16410	51715	68125	3/3	Aden	3/3	Aden	3/3	Aden
Dhamar	Dhamar City	700	1875	13268	42600	55868	NA	NA	3/3	Dhamar	3/3	Dhamar
Taizz	Dimnat Khadir	550	3000	17675	51800	69475	NA	NA	3/3	Taizz	3/3	Taizz
Lahj	Habil Jabr	525	2000	15791	NA	NA	3/3	Aden	3/3	Aden	3/3	Aden
Hajjah	Hajjah City	750	NA	19075	35650	54725	3/3	Al Hudaydah	2/3	Al Hudaydah	3/3	Al Hudaydah

CONT.

Governorate	District	Petrol price	Water Trucking	SMEB WASH	SMEB Food	SMEB Total	Fuel: Supplier Governorate	Fuel: Total number of respondents^	WASH: Supplier Governorate	WASH: Total number of respondents^	Food: Supplier governorate	Food: Total number of respondents^
Taizz	Jabal Habashy	600	5000	23725	58550	82275	NA	NA	5/5	Taizz	3/3	Taizz
Amran	Jabal Iyal Yazid	NA	1000	9405	NA	NA	NA	NA	3/3	Amran	3/3	Amran
Abyan	Khanfir	525	2000	14562	56225	70787	2/3	Aden	3/5	Abyan	3/5	Aden
Hajjah	Kuhlan Affar	550	3000	15925	32625	48550	1/5	Amran	6/6	Amran	6/6	Amran
Hajjah	Kuhlan Ash Sharaf	700	5000	24200	33300	57500	2/3	Sana'a	2/3	Al Hudaydah	2/3	Al Hudaydah
Sana'a City	Ma'ain	600	650	8828	39829	48657	3/3	Al Hudaydah	2/3	Sana'a city	2/3	Sana'a city
Marib	Marib City	175	1000	10985	54363	65348	3/3	Marib	9/12	Marib	10/12	Marib
Taizz	Mawza	630	NA	18440	62545	80985	3/3	Aden	3/3	Aden	3/3	Aden
Hajjah	Najrah	NA	2500	14750	38950	53700	3/3	Al Hudaydah	3/3	Al Hudaydah	3/3	Al Hudaydah
Al Dhale'e	Qa'atabah	540	3500	19054	52233	71287	2/2	Aden	5/5	Aden	5/5	Aden
Hajjah	Qafil Shamer	850	3000	16050	33700	49750	3/3	Hajjah	3/3	Hajjah	3/3	Hajjah
Lahj	Radfan	540	1750	13104	NA	NA	3/3	Aden	3/3	Aden	3/3	Aden
Taizz	Salh	575	2500	17590	73125	90715	3/3	Aden	3/3	Aden	3/3	Aden
Hadramaut	Sayun	500	5000	25317	56475	81792	3/3	Hadramaut	3/3	Hadramaut	3/3	Hadramaut
Hadramaut	Tarim	500	4000	21785	54350	76135	3/3	Hadramaut	3/3	Hadramaut	3/3	Hadramaut
Lahj	Tuban	500	NA	14800	NA	NA	5/6	Aden	5/6	Aden	6/6	Aden
Al Hudaydah	Zabid	575	NA	16125	36550	52675	3/3	Al Hudaydah	3/3	Al Hudaydah	3/3	Al Hudaydah

^If the number is 4/10 (e.g), this indicates that 10 vendor KIs were interviewed, and of this, 4 answered the supply question.

The supplier governorate indicates the most prevalent answer. In the case of a tie, both governorates are shown.

*The table shows SMEB values and supply chains inside the same governorate and towards other governorates. Districts without a main supplier are those districts where vendor KIs could not identify the origin of the items they sold.

APPENDIX

What is the cash and markets working group (CMWG)?

With the emergence of the conflict in 2014, humanitarian actors in Yemen began using cash and vouchers as a response tool to meet the immediate needs of the Yemeni population. The CMWG was established to provide a platform for discussion and setting standards/recommendations on cash and market-based responses (inclusive of cash and vouchers) for the cash actors in Yemen. The JMIMI was developed by the CMWG, the WASH Cluster, and REACH in order to harmonize price monitoring amongst WASH actors in Yemen.

Additional information on methodology

To be assessed by the JMIMI, markets must be either a single permanent market, or a local community where multiple commercial areas are located in close proximity to one another. When possible, markets/shops are selected within a single geographical location, where there is at least one wholesaler operating in the market.

Participating organisations train their enumerators on the JMIMI methodology and data collection tools using standard training materials developed by REACH. Each month, enumerators conduct KI interviews with market vendors to collect three price quotations for each item from the same market in each district. In addition to price levels, vendors are asked about the location of their supplier, the number of days it takes to restock the items, and the constraints they are facing in purchasing and selling the items in question. Additional questions are included for water trucking, to gauge the impact of delivery distance upon price level.

Following data collection, REACH compiles and cleans all partner data, normalising prices and cross-checking outliers. The cleaned data is then analysed by commodity and by governorate. To illustrate local variations in prices and availability, REACH uses the collected data to map the price of each type of item in each district. REACH also calculates the WASH SMEB (Survival Minimum Expenditure Basket), which is composed of four items: soap (1.05 kg), laundry powder (2 kg), sanitary napkins (50 units) and water trucking (3.15 m3). Food SMEB contains 75 kg of wheat flour, 10 kg of beans (kidney), 8L of vegetable oil, 2.5 kg of sugar, and 1 kg iodized salt.

The cleaned data sets are available on the [REACH Resource Centre](#) and are distributed to all participating partners, as well as to relevant clusters and the broader humanitarian community.

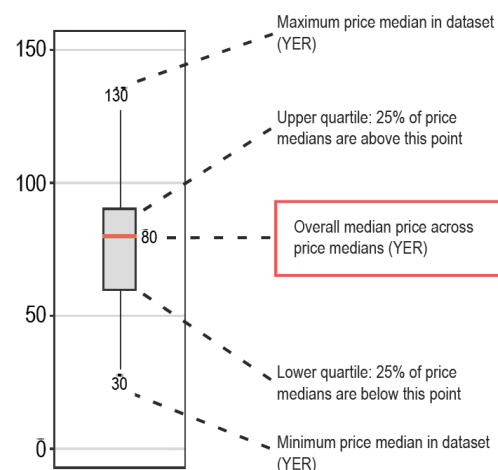
Limitations

Due to issues of access and security across Yemen, the districts included in the JMIMI vary on a monthly basis, and as such there are sometimes a limited number of districts for which trends can be assessed over time. Governorate level data is aggregated from the respective districts assessed in a given month, and so the findings are not representative of individual markets. Finally, the market monitoring process has been coordinated remotely by REACH, which inherently presents some challenges in terms of coordination and follow-up with partners. Participating organisations are therefore requested to adopt harmonised data collection methodologies and tools to ensure that the data uploaded is as accurate as possible.

Calculation of district and governorate median price

District, governorate and national median prices are calculated using data from all assessed markets. Percentage changes from one month to another are calculated only on data from markets that were assessed in both consecutive months. Therefore, part of the percentage variation could be attributed to changes in monthly coverage.

How to read a box plot



ABOUT REACH

REACH is a joint initiative that facilitates the development of information tools and products that enhance the capacity of aid actors to make evidence-based decisions in emergency, recovery and development contexts. By doing so, REACH contributes to ensuring that communities affected by emergencies receive the support they need. All REACH activities are conducted in support to and within the framework of inter-agency aid coordination mechanisms. For more information, please visit our website at www.reach-initiative.org, contact us directly at ahmet.damar@reach-initiative.org or follow us on Twitter at [@REACH_info](https://twitter.com/REACH_info).

Participating partners include



Number of districts assessed per governorate

Governorate	Assessed districts
Abyan	1
Aden	3
Al Dhale'e	3
Al Hudaydah	6
Al Jawf	1
Amran	2
Dhamar	1
Hadramaut	3
Hajjah	10
Ibb	1
Lahj	6
Marib	1
Sana'a	1
Sana'a City	6
Shabwah	1
Taizz	11