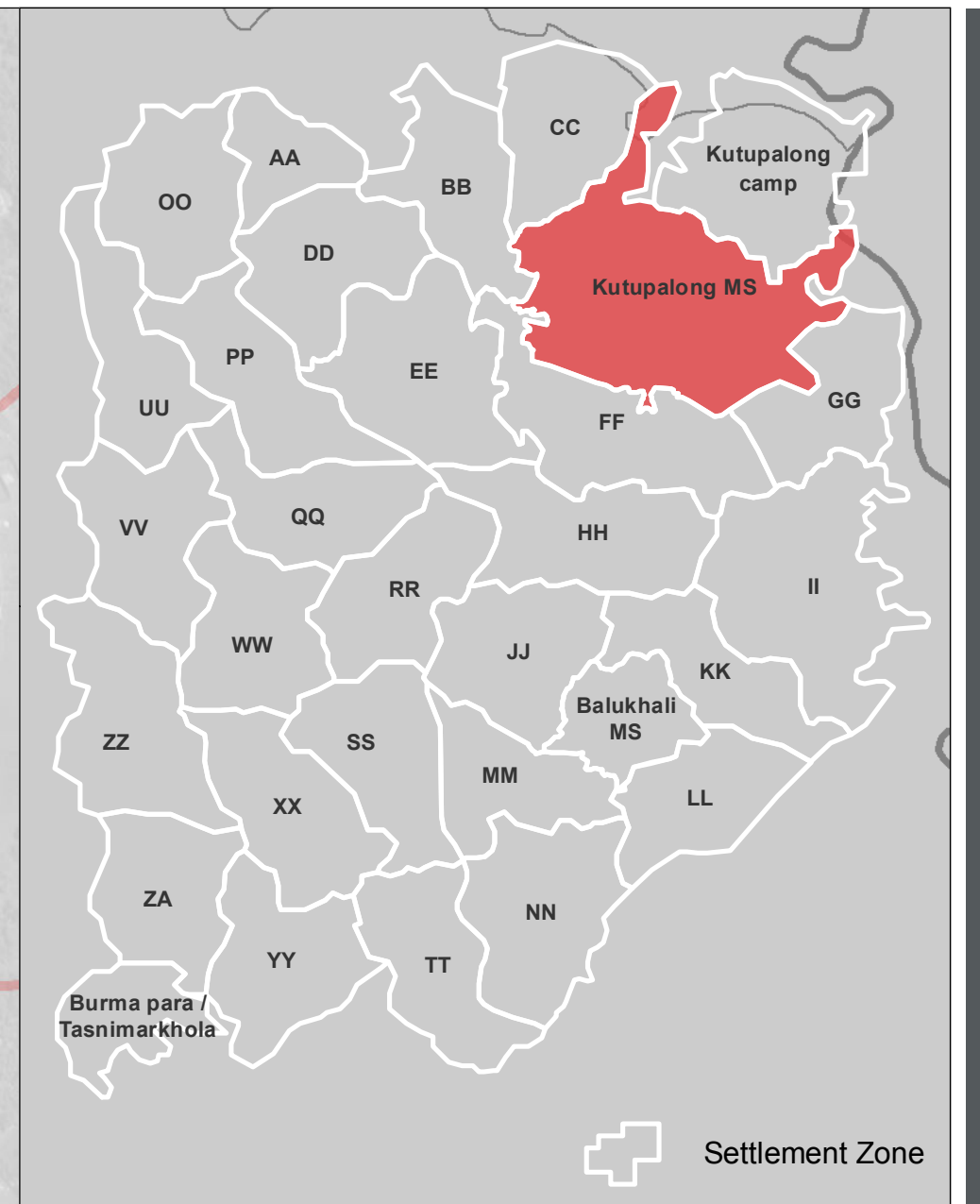
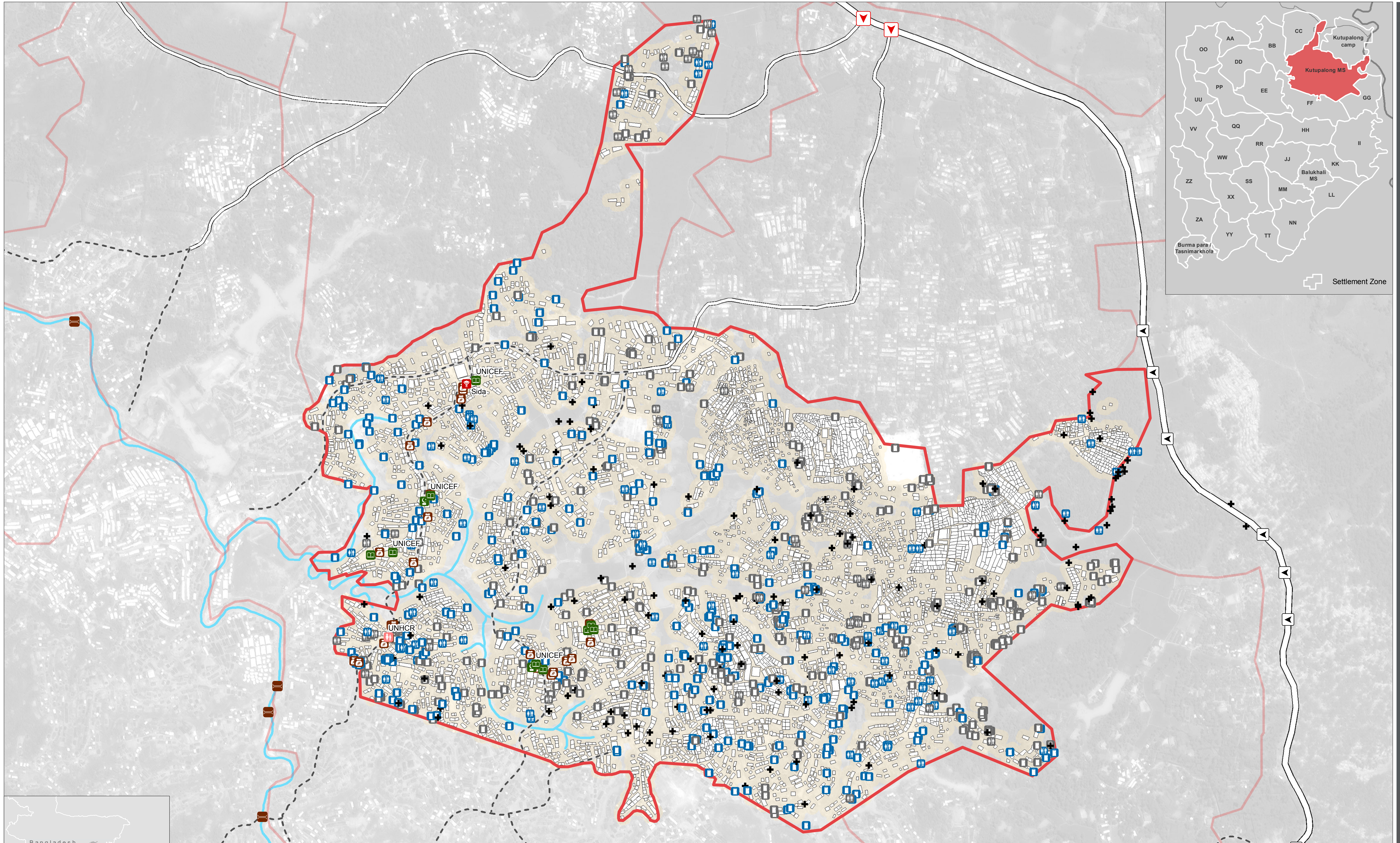


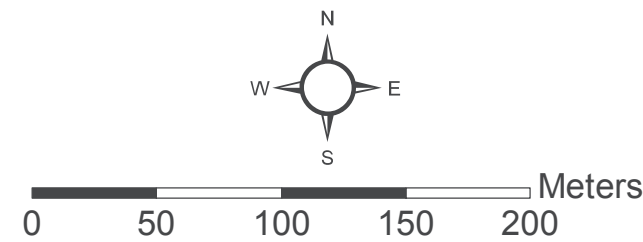
# BANGLADESH - Rohingya Refugee Crisis - Cox's Bazar District

## Kutupalong Makeshift Settlement - Available Latrines and General Infrastructure



- Latrines Block
- Makeshift Latrines Block
- Latrines Block (Non Functioning)\*
- Makeshift Latrines Block (Non Functioning)\*
- Open Defecation Area
- Health Centre
- Child Friendly Space
- Learning Centre/Madrassah
- Mosque
- Shop(s)

- Zone Boundary
- Shelter Footprints (as of 25 September)
- Main Road
- Vehicle Road
- Primary Footpath
- River
- Pedestrian Bridge
- Car Access
- Pedestrian Access



\*Due to missing information in data collected by enumerators, the number of non-functioning facilities may be higher than indicated.

Note: Data, designations and boundaries contained on this map are not warranted to be error-free and do not imply acceptance by the REACH partners, associates or donors mentioned on this

Data Sources:  
Camp Infrastructure - REACH  
Site Boundaries - REACH / OCHA ROAP  
Shelter Footprints - REACH / UNOSAT  
Satellite Imagery: WorldView-2 from 25 September 2017  
Copyright: ©2017 DigitalGlobe  
Source: US Department of State, Humanitarian Information Unit, NextView License.  
Coordinate System: GCS WGS 1984  
File: reach\_bgd\_map\_coxsbazar\_kutupalong\_ms\_infrastructure\_latrines\_17102017\_a1  
Contact: reach.mapping@impact-initiatives.org

