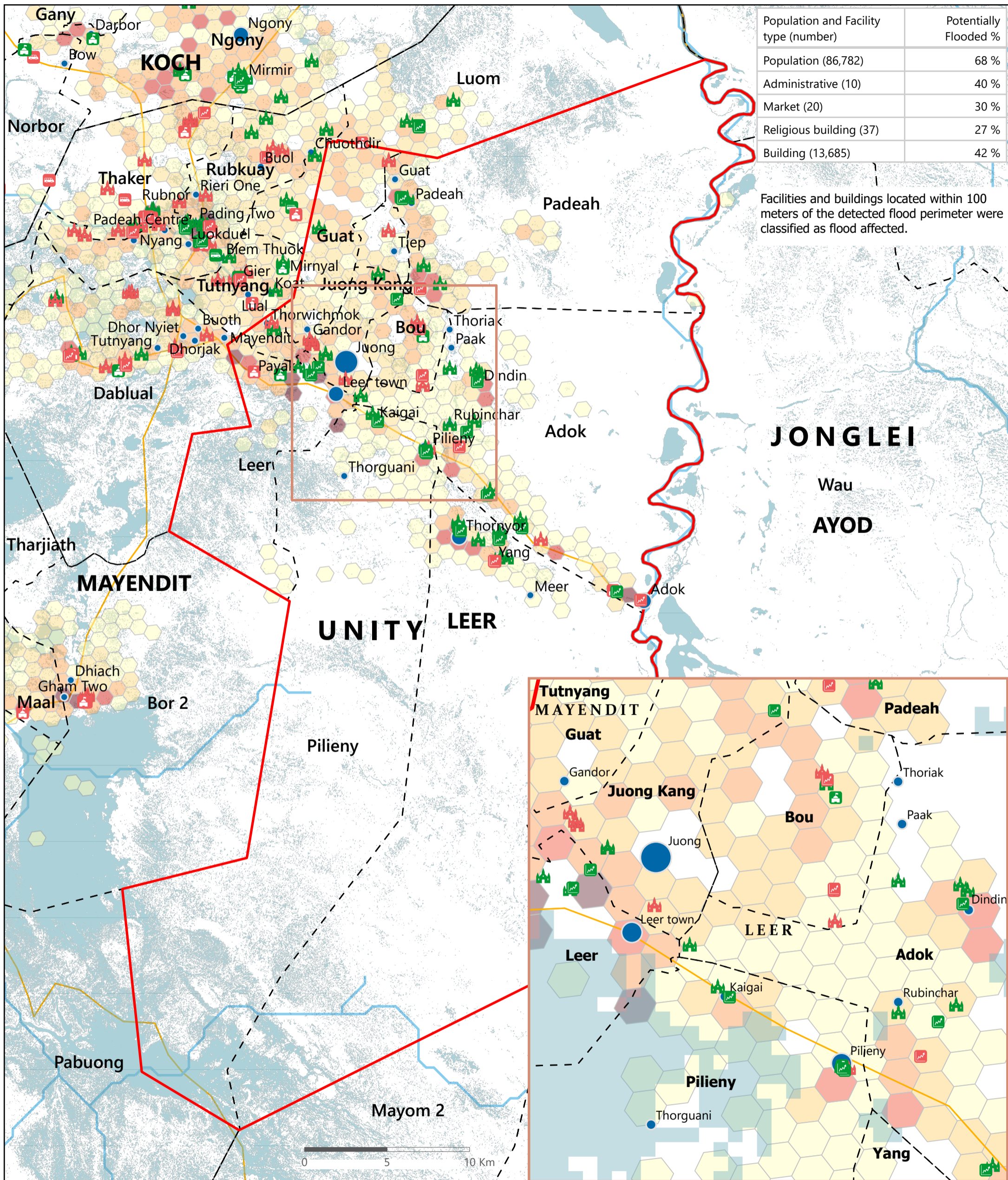


# SOUTH SUDAN - Leer County

## Flood Impact Map: Administrative & Other Facilities (October 2025)

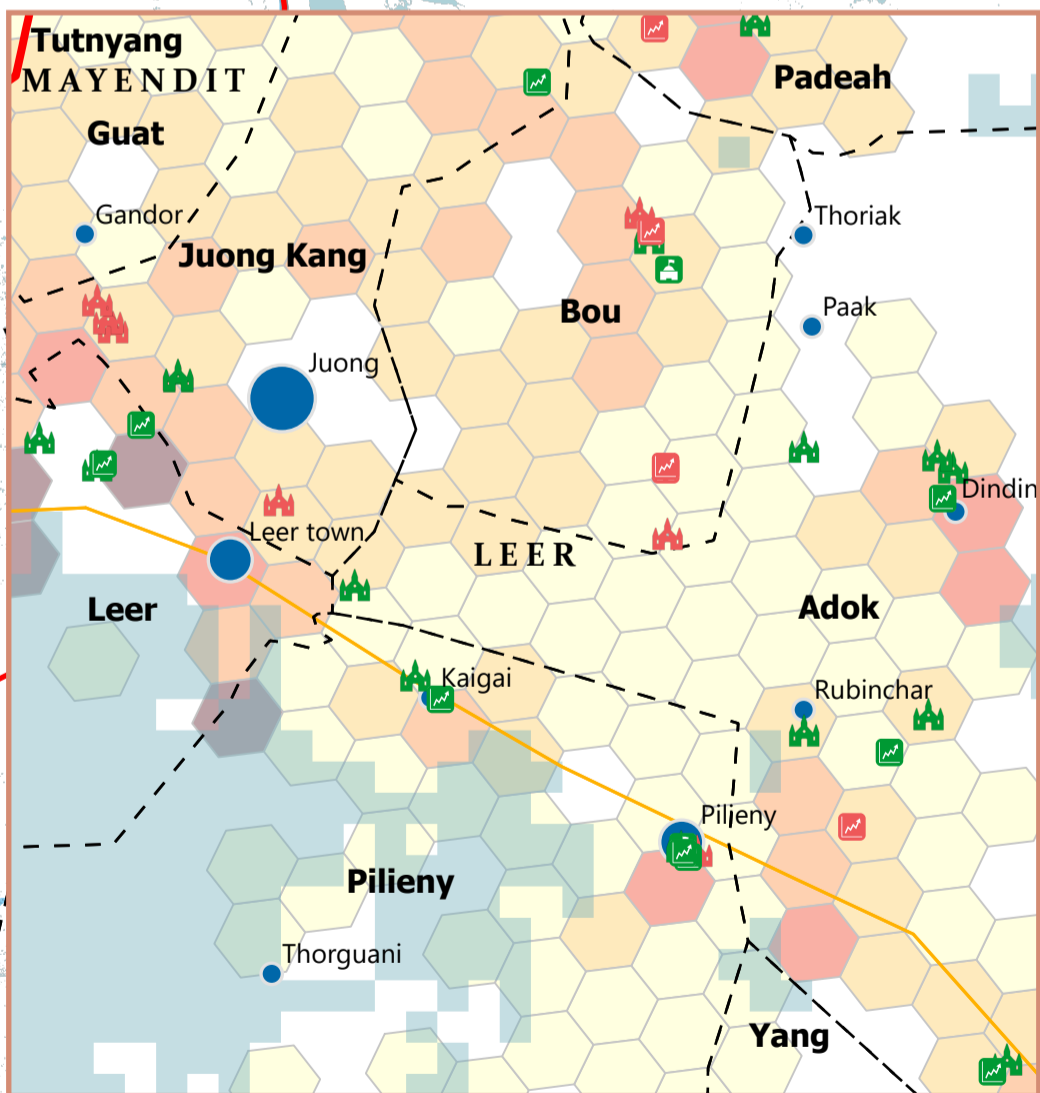
For Humanitarian Purposes Only

Production Date: 22 October 2025



Population and Facility type (number)	Potentially Flooded %
Population (86,782)	68 %
Administrative (10)	40 %
Market (20)	30 %
Religious building (37)	27 %
Building (13,685)	42 %

Facilities and buildings located within 100 meters of the detected flood perimeter were classified as flood affected.



**Population (Kontur, 2023)**

- 1 - 100
- 101 - 250
- 251 - 500
- 501 - 750
- > 750

**index**

- Unaffected Market
- Potentially Affected Market
- Unaffected Administrative Office
- Potentially Affected Administrative Office
- Unaffected Transport Facility
- Potentially Affected Transport Facility
- Unaffected Religious Centre
- Potentially Affected Religious Centre

**Settlements (Population)**

- < 5,000
- 5,001 - 10,000
- > 10,000

**Other Symbols:**

- Roads
- River
- Payam
- County
- State

Data sources: Source: REACH, OCHA, UNMISS, IOM, DTM, UNOSAT, FEWSNET, WHO, IOM, DTM, Global Google-Microsoft Open Buildings Dataset (2023)  
 Coordinate System: Name: GCS WGS 1984  
 File: REACH\_SSD\_Map\_Unity\_Leer\_Flood\_Impact\_Administrative\_22\_Oct\_2025  
 Contact: reach.mapping@impact-initiatives.org

*Note: Data, designations and boundaries contained on this map are not warranted to be error-free and do not imply acceptance by REACH partners, associates or donors mentioned on this map.*

