

# Findings Factsheet: Livelihoods & Early Recovery

## Libya REACH Multi-Sector Needs Assessment

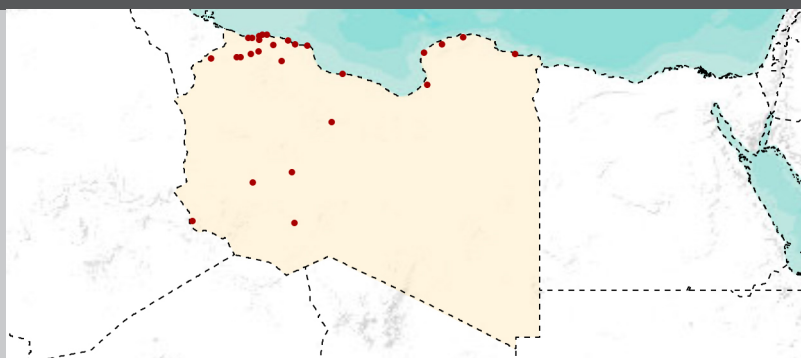
June 2016



This factsheet is one of a series of sector specific factsheets presenting key indicators on the humanitarian situation in Libya at a glance.

Findings are based on primary data collected in June 2016 from People with Knowledge (PwK) across Libya, as part of a multi-sector needs assessment (MSNA). Where possible findings are compared with those from the previous MSNA in February 2016 to assess overall trends.

Data was collected from 550 PwK from 27 municipalities between 12 and 30 June 2016. Due to the purposive selection of PwK, data should only be considered as indicative of the overall situation in assessed areas.

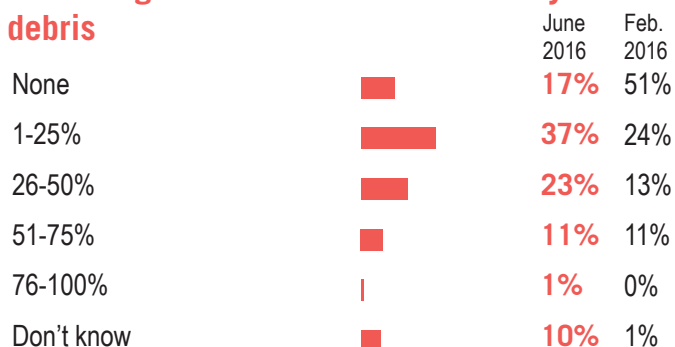


### Necessary repairs

**85%**

Proportion of municipalities in which a majority of PwK reported **no** necessary major repairs to the basic infrastructures<sup>1</sup> in the last six months.

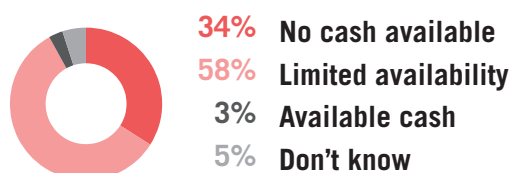
### Percentage of communities affected by rubble/debris



### Cash availability

**92%**

of PwK reported **limited** or **no** cash availability in their community.



**100%** of PwKs reported limited or no cash availability in their community in February 2016.

### Functionality of banking system

**92%**

of PwK reported that banking services **did not** work regularly during the 3 months prior

**82%** of PwK reported bank services not working in the 3 months prior to the February 2016 assessment.

<sup>1</sup> This refers to roads, bridges, health centres, public buildings, etc.

<sup>2</sup> PwK could choose more than one answer

### Household income

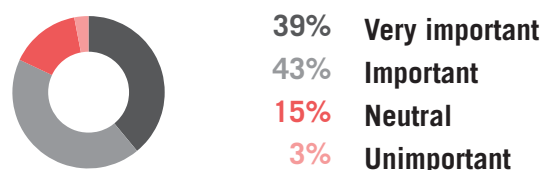
The most common sources of income in a municipality during the previous month as reported by PwK:

	June 2016	South	West	East	Feb. 2016
Salaried work	58%	64%	56%	57%	64%
Pension	6%	5%	12%	2%	12%
Petty trade small business	4%	5%	3%	4%	9%
Sale agricultural products	2%	5%	3%	1%	5%
National social security system	11%	1%	5%	19%	4%
Casual Labour	7%	8%	7%	7%	3%

### Major challenges to income generation according to PwK<sup>2</sup>:

	June 2016	Feb. 2016
Salary not paid or delayed	85%	81%
Banking system not functioning	54%	44%
Low wage / salary	30%	36%
No / lack of opportunities	25%	38%

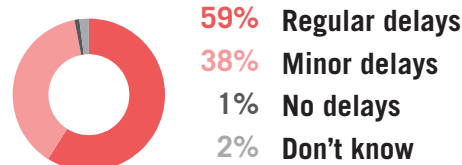
### Reported importance of migrant workers



### Delay in salary payment

**97%**

of PwK reported **some** delay in government salary payments.



**98%** of PwK reported **some** delay in receiving salary payments in February 2016.