

Summary

This profile provides an overview of water, sanitation and hygiene (WASH) infrastructure within Camp 17 in Ukhia, Cox's Bazar. Primary data for this round was collected from 29th May to 22nd July 2018.¹ Findings should be considered indicative only. Full camp dataset is available on [HDX](#).

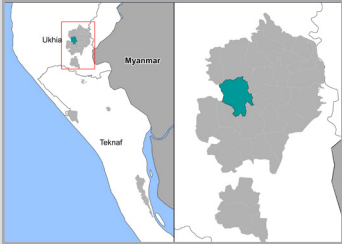
Site Overview

# of individuals:	14,669
# of households:	3,458
# of shelters:	3,802
# of individuals per shelter:	3.9

Key WASH Infrastructure

# of latrines: (% functional and safe ²):	1,191 (87%)
# of improved water sources: ³ (% functional):	555 (83%)
# of washrooms:	548

Location Map



Water Access

Three most commonly identified types of water points, by functionality:



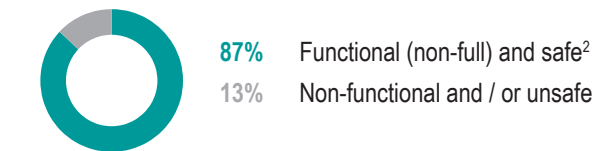
Key sectoral standards:

	Target	Current Round	Achievement
# of people per functional improved water source	max. 250	32	<div></div>
% of shelters with at least 1 functional improved water source ³ within 200m	100%	100%	<div></div>
% of functional improved water sources with no latrine within 10m	100%	43%	<div></div>

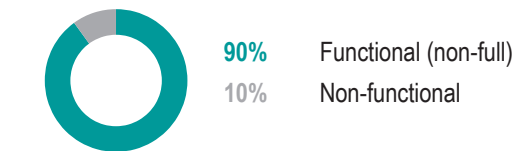
Sanitation

Latrine characteristics:

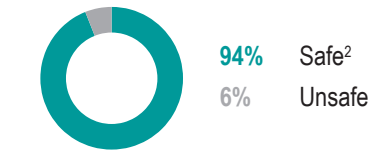
Functionality and safety



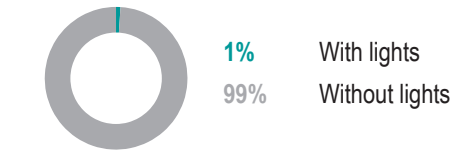
Functionality



Safety



Lighting



Key sectoral standards:

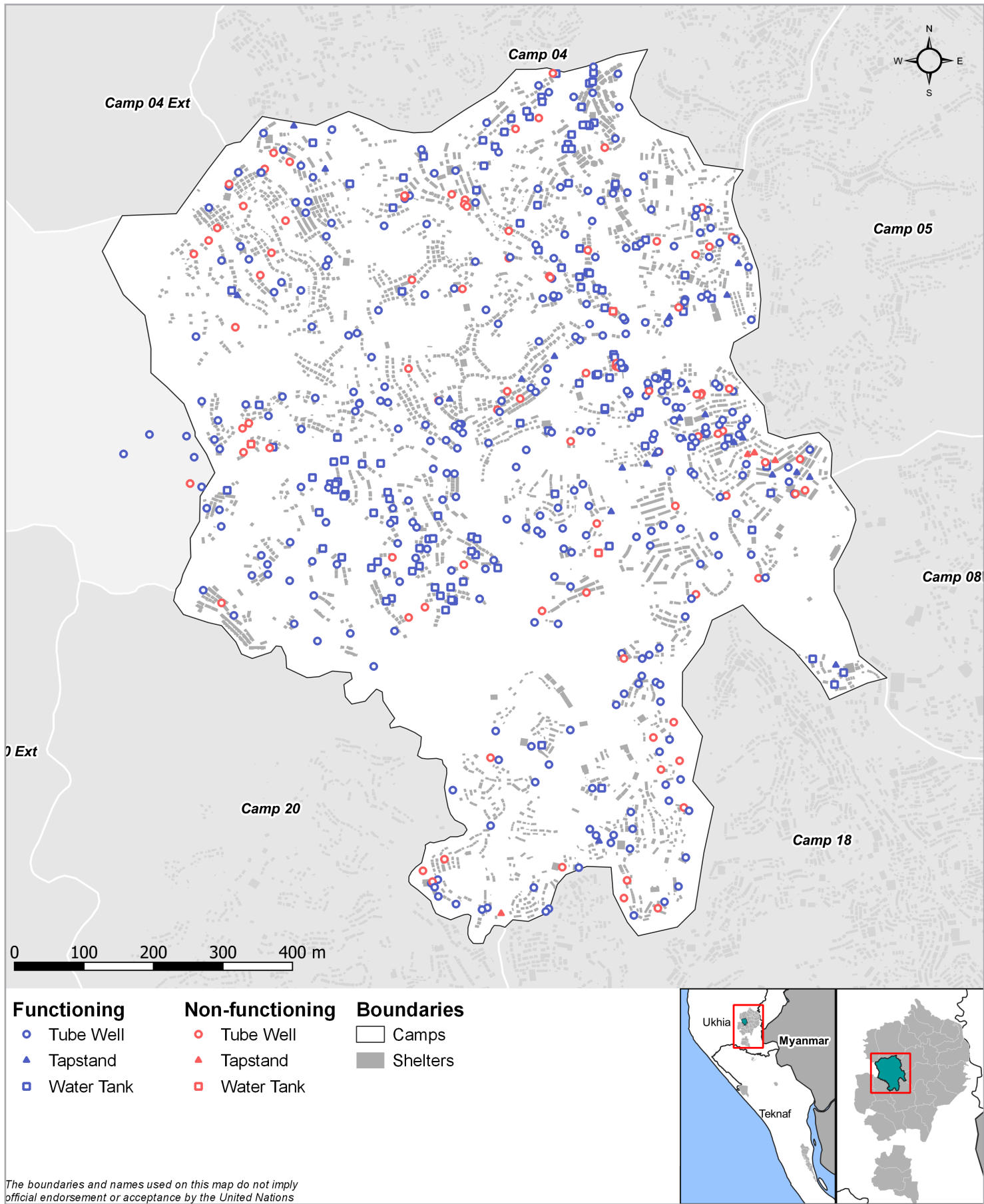
	Target	Current Round	Achievement
# of people per functional (non-full) and safe latrine ²	max. 20	14	<div></div>
# of people per functional (non-full) latrine	max. 20	14	<div></div>
# of people per safe latrine ²	max. 20	13	<div></div>
% of shelters with at least one functional and safe latrine ² block within 50m	100%	98%	<div></div>

Targets based on long term WASH Sector Standards / Indicators for the Rohingya response, Sphere Minimum Standards as well as Department of Public Health and Environment (DPHE) Minimum Standards. Minimum standard/indicator reached, 75%-99% minimum standard/indicator reached, 50-74% minimum standard/indicator reached, Less than 50% of minimum standard/indicator reached.

1. REACH enumerators conducted a full sweep of all sites and camps (as per boundaries defined by ISCG) and used an Open Data Kit (ODK) form to log all key infrastructure observed during this sweep, with further details to be logged for WASH infrastructure.
2. Safe refers to fully covered latrines (i.e. a latrine with four walls, a roof and a lockable door).
3. This includes handpumps / tube wells, tapstands and water tanks.

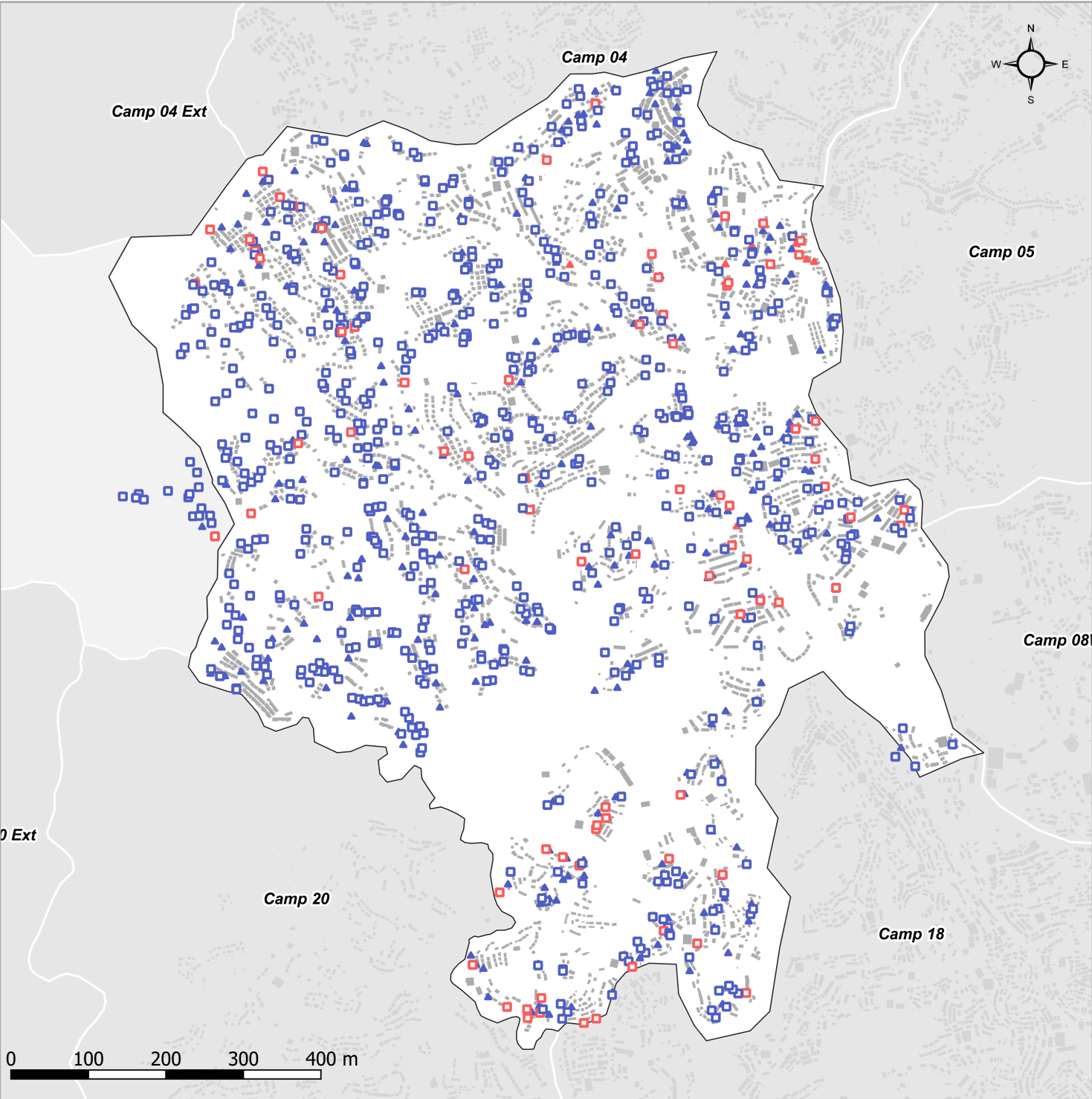


Water Access





Sanitation



- Functioning**

 - Latrines
 - ▲ WASH Room
- Non-functioning**

 - Latrines
 - ▲ WASH Room
- Boundaries**

 - Camps
 - Shelters

The boundaries and names used on this map do not imply official endorsement or acceptance by the United Nations

