

MOZAMBIQUE - Beira City

Nhaconjo - Structural Damage by Construction Typology - As of 26 March

6,485 buildings total*

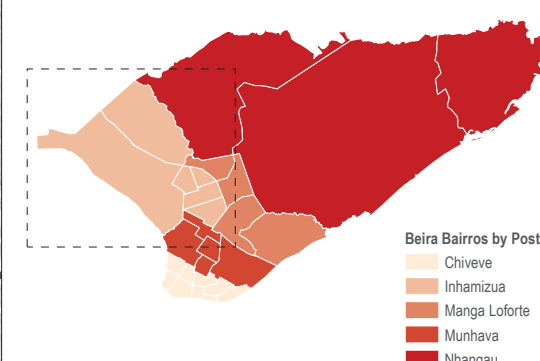
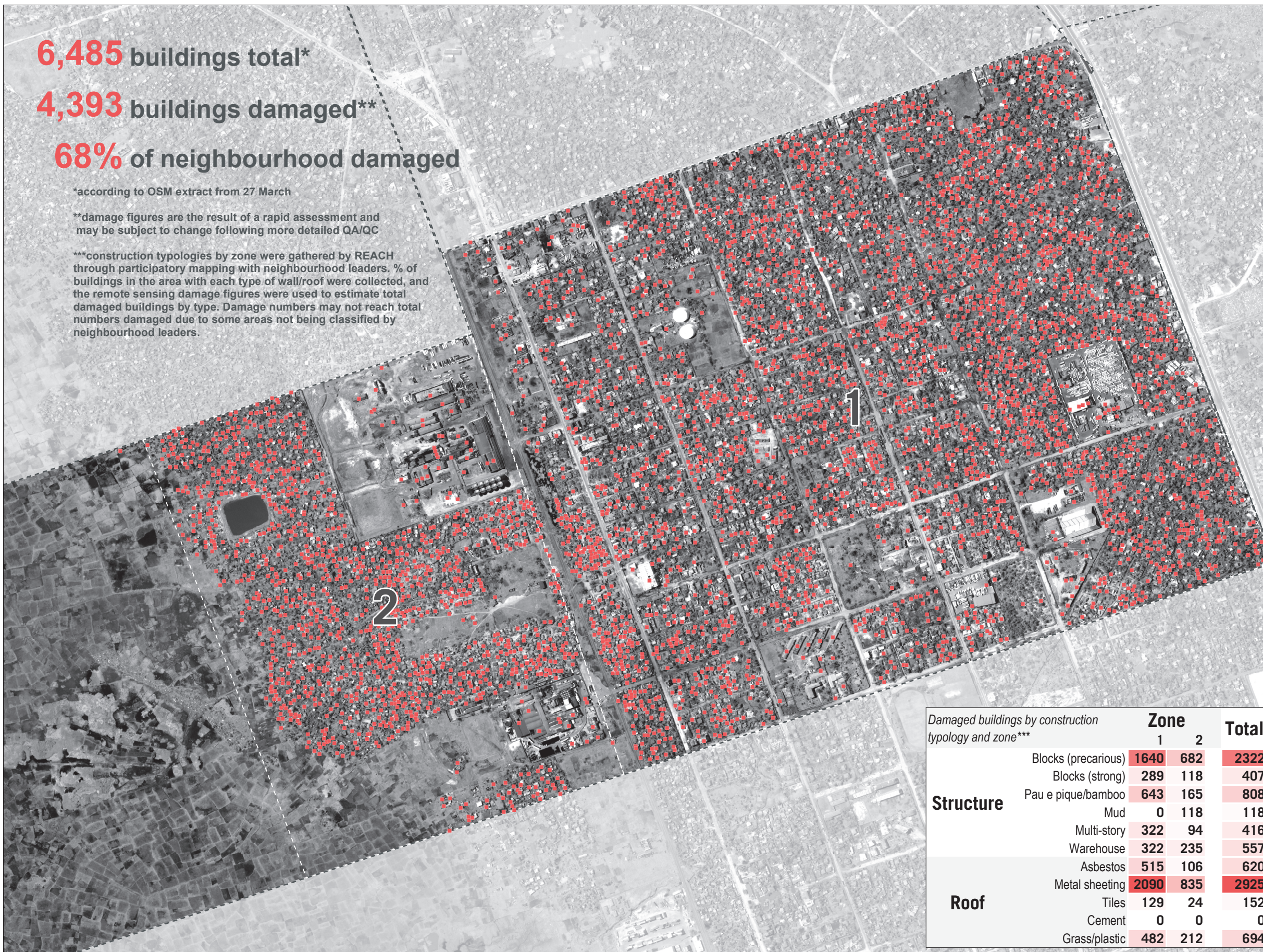
4,393 buildings damaged**

68% of neighbourhood damaged

*according to OSM extract from 27 March

**damage figures are the result of a rapid assessment and may be subject to change following more detailed QA/QC

***construction typologies by zone were gathered by REACH through participatory mapping with neighbourhood leaders. % of buildings in the area with each type of wall/roof were collected, and the remote sensing damage figures were used to estimate total damaged buildings by type. Damage numbers may not reach total numbers damaged due to some areas not being classified by neighbourhood leaders.



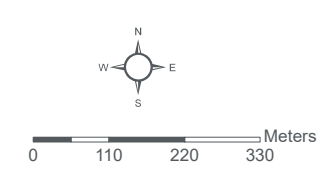
Damaged buildings by construction typology and zone***		Zone		Total
		1	2	
Structure	Blocks (precarious)	1640	682	2322
	Blocks (strong)	289	118	407
	Pau e pique/bamboo	643	165	808
	Mud	0	118	118
	Multi-story	322	94	416
	Warehouse	322	235	557
Roof	Asbestos	515	106	620
	Metal sheeting	2090	835	2925
	Tiles	129	24	152
	Cement	0	0	0
	Grass/plastic	482	212	694



Data sources:
Damage sites - UNOSAT-REACH
Beira Bairros - INGC
Bairros Delineation - REACH
Administrative Boundaries (0-3) - OCHA
Satellite Imagery: WorldView-2 from 26 March 2019
Copyright: ©DigitalGlobe 2019
Source: US Dept of State Humanitarian Information Unit, NextView License

Legend

- Damaged Buildings
- Bairros



Coordinate System: GCS WGS 1984
File: MOZ_Map_CycloneIdai_Beira_DamageByType_Nhaconjo_30APR2019
Contact: reach.mapping@impact-initiatives.org

Note: Data, designations and boundaries contained on this map are not warranted to be error-free and do not imply acceptance by the REACH partners, associated, donors mentioned on this map.



Funded by
European Union
Civil Protection and
Humanitarian Aid

REACH
An initiative of
IMPACT Initiatives
ACTED and UNOSAT