

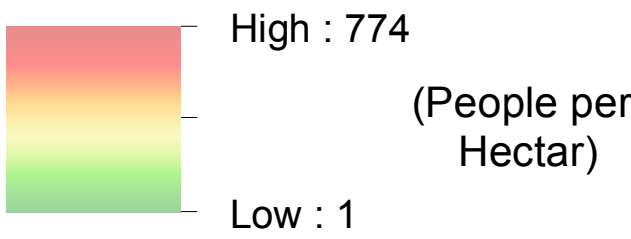


IRAQ - Erbil Governorate - Darashakran Camp

Population Density - June 2015

For Humanitarian Purposes Only
Production date : 9 August 2015

Population Denisty



Camp Infrastructure

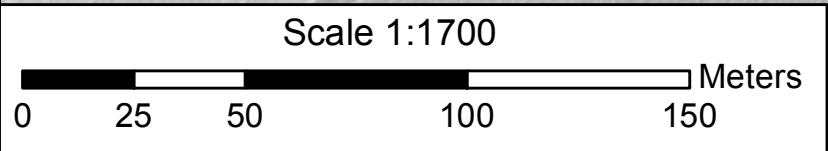
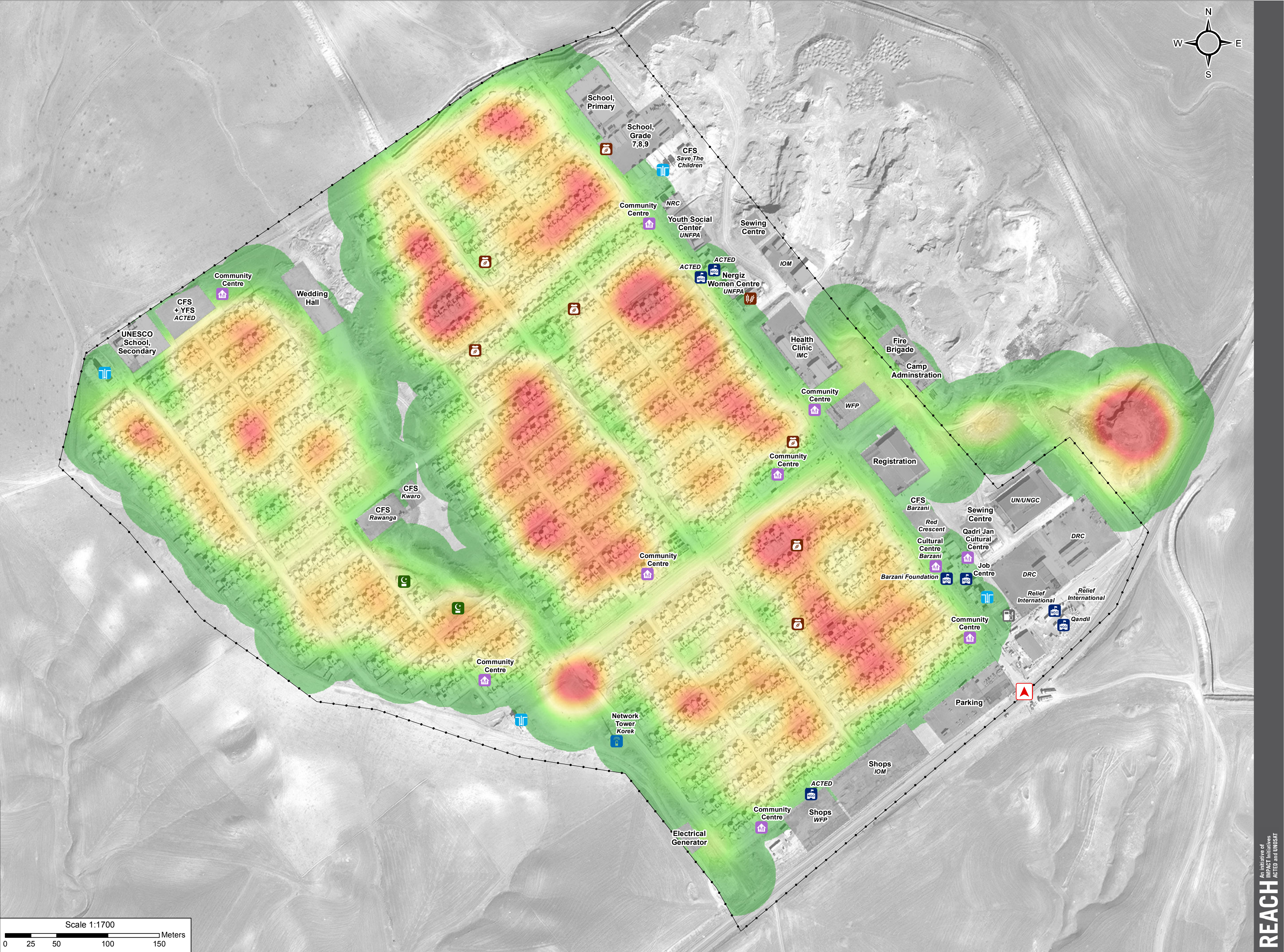
- Fence
- Office / Facility
- Entrance
- NGO Office
- Mosque
- Community Area
- Bakery
- Shop
- Network Tower
- Fuel Depot
- Borehole

GPS Coordinates
of Camp Location:
Longitude: 43° 53' 20.769" E
(43.889103)
Latitude: 36° 28' 14.156" N
(36.470599)

Thematic Data: 17 June 2015 - REACH
Administrative boundaries: GADM
Background imagery:
27/02/2014 DigitalGlobe
Projection: WGS 1984 UTM Zone 38N

File: IRQ_Map_Darashakran_
CampSweepIndicators_17Jun2015
Contact : iraq@reach-initiative.org

Note: Data, designations and boundaries
contained on this map are not warranted to be
error-free and do not imply acceptance by the
REACH partners, associates or donors
mentioned on this map.



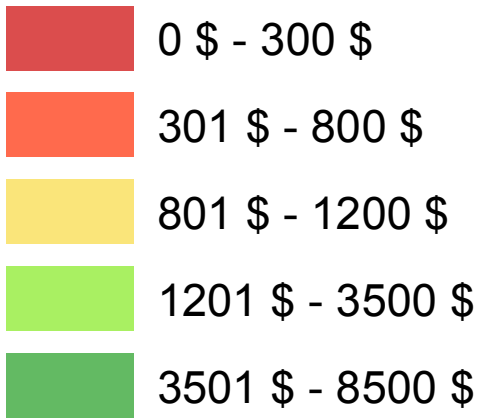


IRAQ - Erbil Governorate - Darashakran Camp

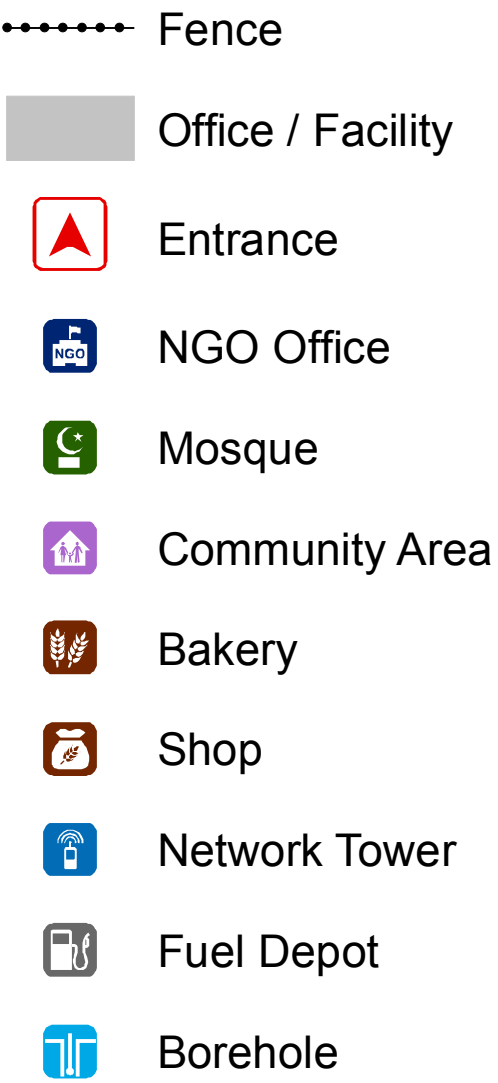
Monthly Income - June 2015

For Humanitarian Purposes Only
Production date: 28 July 2015

Monthly Income in USD



Camp Infrastructure



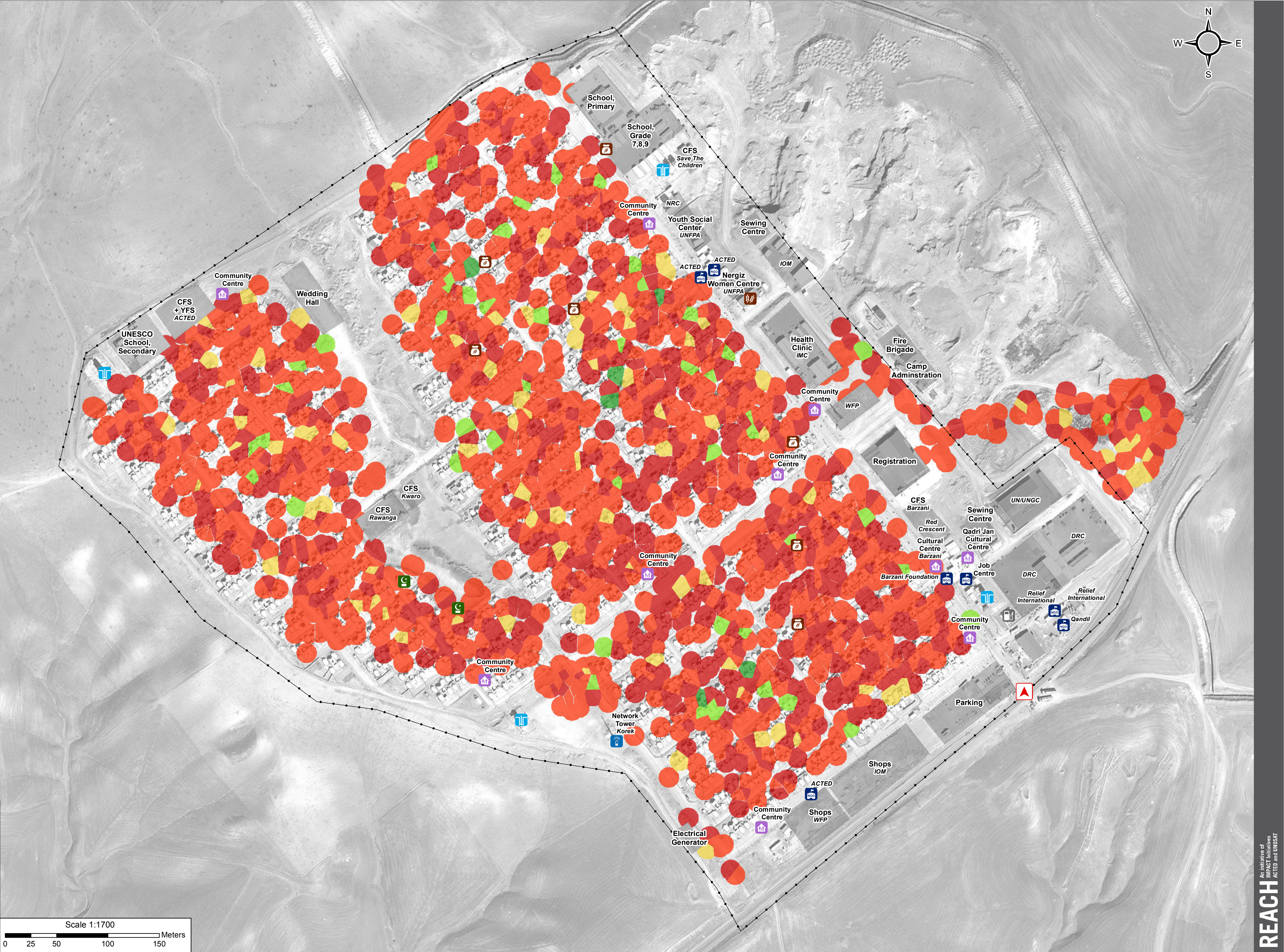
GPS Coordinates of Camp Location:
Longitude: 43° 53' 20.769" E
(43.889103)
Latitude: 36° 28' 14.156" N
(36.470599)

Note:
Polygons representing households are generated by the ArcToolbox tool 'Create Thiessen Polygons' using the location recorded at each assessment. The polygons created are a spatial representation of the household area not a defined boundary of a household.

Data Sources:
Thematic Data: 17 June 2015 - REACH
Administrative boundaries: GADM
Background imagery: 27/02/2014 DigitalGlobe
Projection: WGS 1984 UTM Zone 38N

File: IRQ_Map_Darashakran_CampSweepIndicators_17Jun2015
Contact : iraq@reach-initiative.org

Note: Data, designations and boundaries contained on this map are not warranted to be error-free and do not imply acceptance by the REACH partners, associates or donors mentioned on this map.





IRAQ - Erbil Governorate - Darashakran Camp

Shelter Types - June 2015

For Humanitarian Purposes Only
Production date : 9 August 2015

Shelter Type

- Permanent Shelter
- Tent With Block
- Tent Without Block

Camp Infrastructure

- Fence
- Office / Facility
- Entrance
- NGO Office
- Mosque
- Community Area
- Bakery
- Shop
- Network Tower
- Fuel Depot
- Borehole

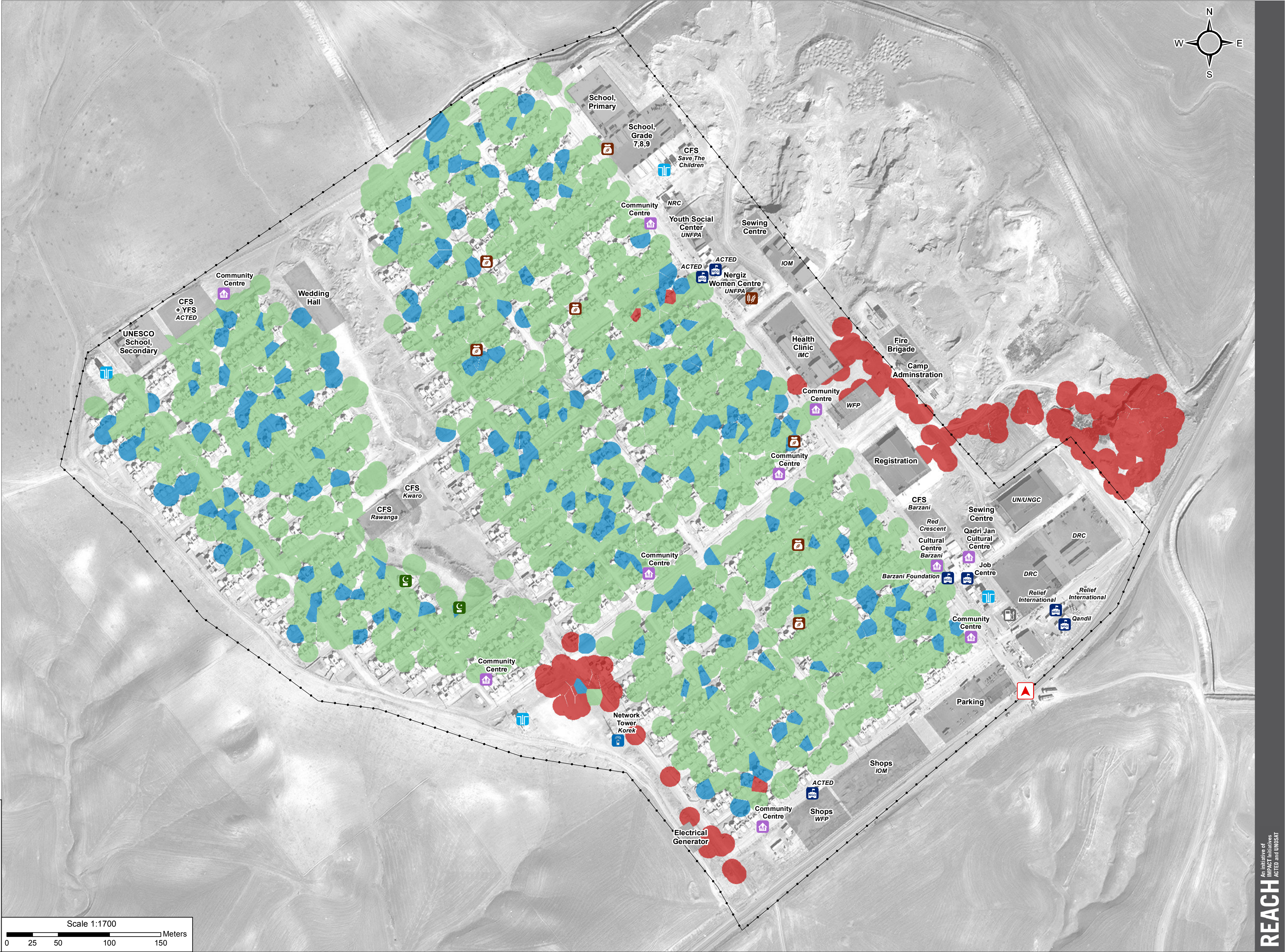
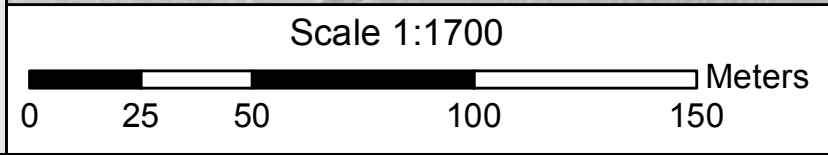
GPS Coordinates of Camp Location:
Longitude: 43° 53' 20.769" E (43.889103)
Latitude: 36° 28' 14.156" N (36.470599)

Note:
Polygons representing households are generated by the ArcToolbox tool 'Create Thiessen Polygons' using the location recorded at each assessment. The polygons created are a spatial representation of the household area not a defined boundary of a household.

Data Sources:
Thematic Data: 17 June 2015 - REACH
Administrative boundaries: GADM
Background imagery: 27/02/2014 DigitalGlobe
Projection: WGS 1984 UTM Zone 38N

File: IRQ_Map_Darashakran_CampSweepIndicators_17Jun2015
Contact : iraq@reach-initiative.org

Note: Data, designations and boundaries contained on this map are not warranted to be error-free and do not imply acceptance by the REACH partners, associates or donors mentioned on this map.





IRAQ - Erbil Governorate - Darashakran Camp

Primary Livelihood - June 2015

For Humanitarian Purposes Only
Production date : 9 August 2015

Primary Livelihood

- Cash Remittances
- Food Assistance
- Humanitarian Assistance
- Low Skill Service
- No Livelihood
- Renting Property
- Retail Trade
- Skilled Service Labour
- Trade Vocation

Camp Infrastructure

- Fence
- Office / Facility
- Entrance
- NGO Office
- Mosque
- Community Area
- Bakery
- Shop
- Network Tower
- Fuel Depot
- Borehole

Note:
Polygons representing households are generated by the ArcToolbox tool 'Create Thiessen Polygons' using the location recorded at each assessment. The polygons created are a spatial representation of the household area not a defined boundary of a household.

Data Sources:
Thematic Data: 17 June 2015 - REACH
Administrative boundaries: GADM
Background imagery: 27/02/2014 DigitalGlobe
Projection: WGS 1984 UTM Zone 38N

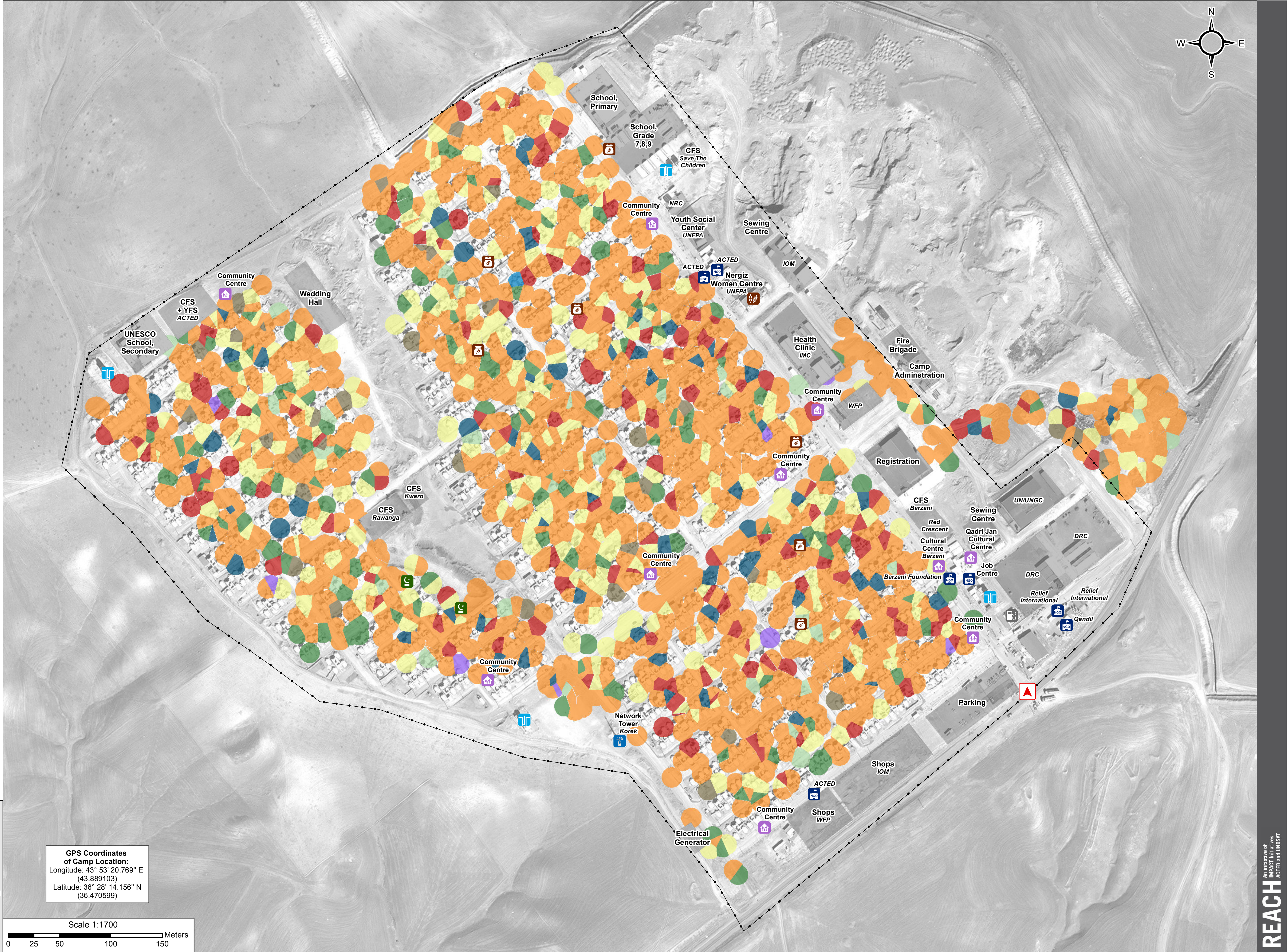
File: IRQ_Map_Darashakran_CampSweepIndicators_17Jun2015
Contact : iraq@reach-initiative.org

Note: Data, designations and boundaries contained on this map are not warranted to be error-free and do not imply acceptance by the REACH partners, associates or donors mentioned on this map.



GPS Coordinates of Camp Location:
Longitude: 43° 53' 20.769" E
(43.889103)
Latitude: 36° 28' 14.156" N
(36.470599)

Scale 1:1700
0 25 50 100 150 Meters





IRAQ - Erbil Governorate - Darashakran Camp

Food Security - June 2015

For Humanitarian Purposes Only
Production date : 9 August 2015

Food Security

- Food Secure
- Marginally Food Secure
- Moderately Food Insecure
- Severely Food Insecure

Camp Infrastructure

- Fence
- Office / Facility
- Entrance
- NGO Office
- Mosque
- Community Area
- Bakery
- Shop
- Network Tower
- Fuel Depot
- Borehole

GPS Coordinates
of Camp Location:
Longitude: 43° 53' 20.769" E
(43.889103)
Latitude: 36° 28' 14.156" N
(36.470599)

Note:
Polygons representing households are generated by the ArcToolbox tool 'Create Thiessen Polygons' using the location recorded at each assessment. The polygons created are a spatial representation of the household area not a defined boundary of a household.

Data Sources:
Thematic Data: 17 June 2015 - REACH
Administrative boundaries: GADM
Background imagery: 27/02/2014 DigitalGlobe
Projection: WGS 1984 UTM Zone 38N

File: IRQ_Map_Darashakran_CampSweepIndicators_17Jun2015
Contact : iraq@reach-initiative.org

Note: Data, designations and boundaries contained on this map are not warranted to be error-free and do not imply acceptance by the REACH partners, associates or donors mentioned on this map.

