

AFGHANISTAN - Nangarhar Province

Jalalabad District - PD 09 / ABR infrastructure mapping - December 2021

For Humanitarian Purposes Only
Production date : 17-May-2022

Boundaries

Gozar boundary

Nahiya boundary

District boundary

Province boundary

Infrastructures

Public well

Public tap

Public borehole

Basic Health Centre

Comprehensive health centre

Clinic

Hospital

Family health house

Health sub-centre

Medical Camp

Pharmacy

Primary school

Secondary school

High school

University

Technical School

Madrasa

Technical training center

Early childhood education

Large bazaar

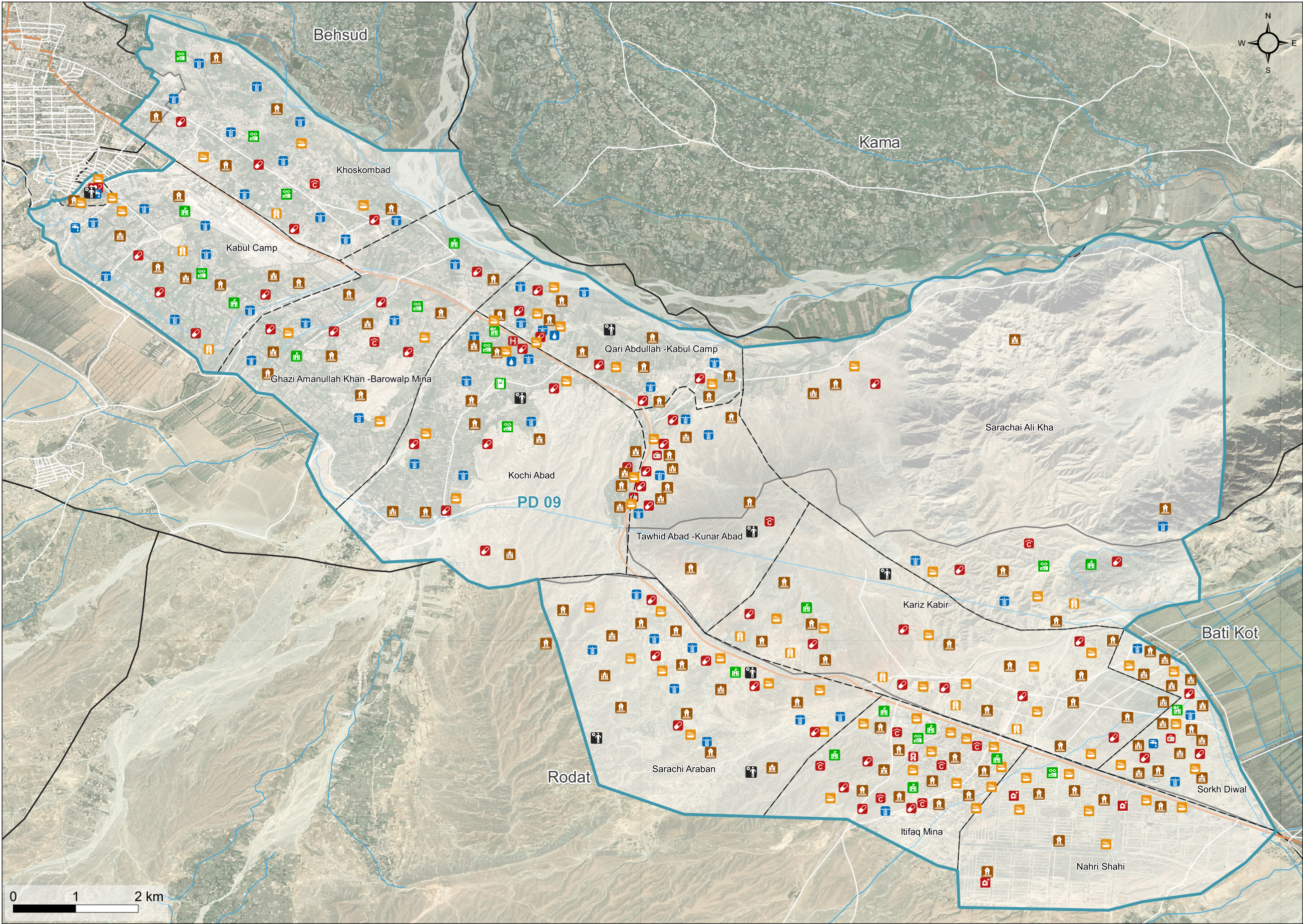
Small bazaar

Friday mosque

Small mosque

Cemetery

Main road



Data sources:
ISet boundary and Infrastructures: REACH
Admin Boundaries and roads: AGCHO
Coordinate System: GCS WGS 1984
Contact: reach.mapping@impact-initiatives.org

Imagery:
Satellite Imagery: Maxar (WV03) from 06 December 2019
Copyright: ©2019 DigitalGlobe
Source: ESRI
File:
REACH_AFG_Map_ABR_infrastructure_mapping_Nang
arhar_Jalalabad_PD 09_17May2021_A3L

Definition:
Gozar: Urban unit denoting a community, analogous to a neighbourhood

Note: Data, designations and boundaries contained on this map are not warranted to be error-free and do not imply acceptance by the REACH partners, associates, donors mentioned on this map.