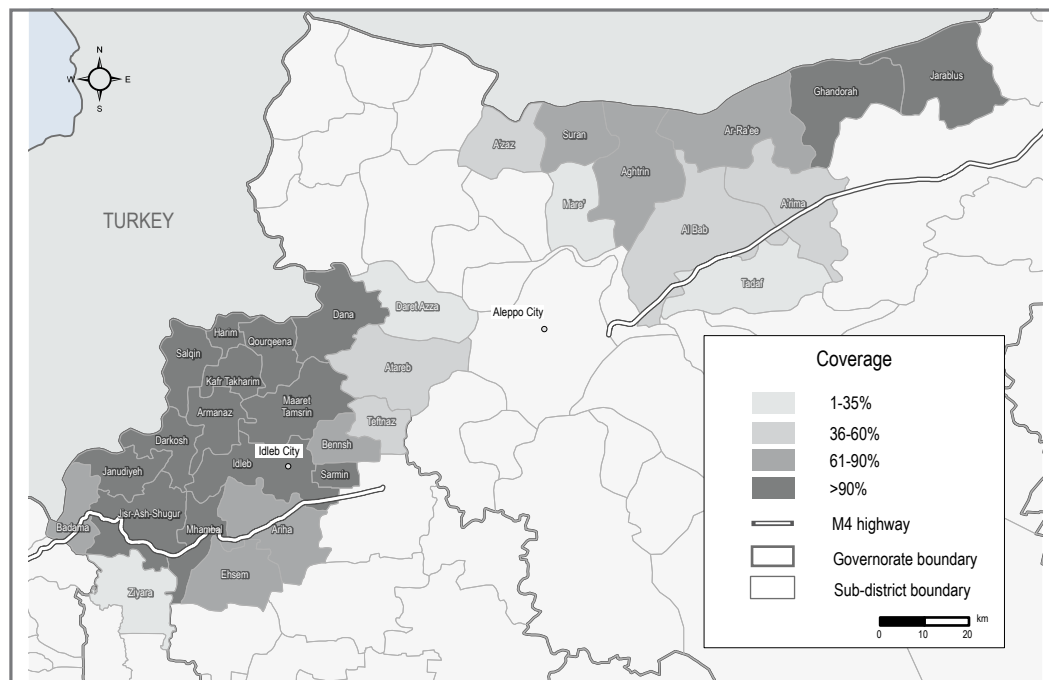


Introduction and Methodology

HSOS is a monthly assessment that provides comprehensive, multi-sectoral information about the humanitarian conditions and priority needs inside Syria. This factsheet presents a thematic review based on the HSOS assessment of the priority needs and humanitarian assistance, economic conditions, living conditions, access to basic services, COVID-19 situation, and security and protection situation in Northwest Syria. **Sector-specific indicator findings by location can be found on the [HSOS dashboard](#).**

The assessment is conducted using a key informant (KI) methodology at the community level. REACH enumerators are based inside Syria and interview three to six KIs per assessed location, either directly or remotely (via phone). KIs are chosen based on their community-level and sector-specific knowledge. This factsheet presents information gathered in **594 communities** across the greater Idlib area¹ (354 communities) and northern Aleppo area (240 communities). **Data was collected between 12-19 of November 2020 from 2,200 KIs** (20% female). Unless specified by an endnote, all indicators refer to the situation in the 30 days prior to data collection (October/November 2020). Findings are indicative rather than representative, and should not be generalized across the population and region. Findings that are calculated based on a subset of the community are indicated by the following footnote ♦, with each subset specified in the endnotes.

The complete monthly HSOS dataset is available on the [REACH Resource Centre](#).



Key Highlights

Intensified hostilities, increased spread of COVID-19, and price fluctuations due to unstable currencies exacerbated an already dire humanitarian situation for households in Northwest Syria (NWS). Findings suggest that urgent priority needs including shelter, winterisation, and healthcare assistance were compounded by the continued lack of access to livelihoods.

- The **volatile security situation** in NWS continued to pose significant protection risks to civilians and affected access to services among households. Reported airstrikes around the M4 and M5 highways, intense shelling between parties to the conflict as well as non-state armed groups (NAGs), and improvised explosive device (IED) attacks resulted in dozens of civilian casualties including children and aid workers.^a Violence in NWS displaced some 8,000 people in November.^b As hostilities intensify, KIs in 57 communities reported the threat of imminent conflict. Moreover, KIs reported that the security situation hindered access to markets and health facilities in 111 and 33 communities, respectively.
- November saw **a surge in COVID-19 cases**. As of 18 November, some 13,179 cases were confirmed in NWS^c, which marks an 80% increase from October.^d However, limited testing capacity suggests that many cases remain undetected. November findings highlight a high risk of continued acceleration of COVID-19 spread. Overcrowded shelters, health facilities, and schools were cited in at least 46% of communities where barriers were reported. Households also experienced difficulties in following hygiene recommendations as soap was reportedly unaffordable for the majority of people in 27% of communities. Moreover, health resources are increasingly strained. In fact, a lack of medicines at health facilities and shortage of health staff were reported in 49% and 13% of communities reporting on barriers to healthcare, respectively.
- Households in nearly all communities experienced challenges in accessing sufficient food, primarily due to the high cost of food items (reported in 84% of communities). **Food prices varied significantly** in parallel with the fluctuation of the Turkish Lira (TRY) against the US dollar (USD). Price instability was further attributed to the end of the agricultural season and the high import costs of commodities that are purchased in USD by traders but listed in TRY, complicating the market situation for both merchants and consumers.^e The continued economic downturn and increased market complexity reportedly pushed households further into food insecurity.^f November findings show that it has become increasingly challenging for households to meet their basic needs. Knock on effects of COVID-19 measures prevented households from accessing livelihoods. For example, daily waged labour, which was the most commonly reported source of income for households, was disrupted in over one third of communities.

HSOS Dashboard

For a breakdown of sector-specific indicators by location, please see the [HSOS dashboard](#). The interactive HSOS dashboard provides a monthly sectoral overview of key indicators disaggregated at the sub-district and community level.



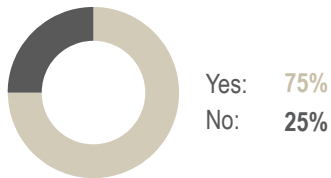
Priority Needs and Humanitarian Assistance



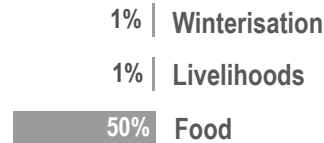
Most commonly reported **first, second, and third** and **overall** priority needs for Residents ^{2,3,†}

	FIRST	SECOND	THIRD	OVERALL
1	Healthcare	Winterisation	Livelihoods	Winterisation 57%
2	Food	Livelihoods	NFIs ^h	Livelihoods 52%
3	Livelihoods	WASH	Winterisation	Food 41%

% of communities where any of the resident households were able to access humanitarian assistance [‡]



% of communities where KIs reported the presence of the following **types of assistance** for residents ^{4,†}



Most commonly reported barriers that resident households faced in accessing humanitarian assistance ^{4,†}

Communities reporting access to humanitarian assistance		Communities reporting no access to humanitarian assistance	
Assistance provided was insufficient to cover all people in need	67%	1	82%
Assistance provided was not relevant to all needs	55%	2	13%
Quantity of assistance provided to households was insufficient	41%	3	8%
			82%
			13%
			8%

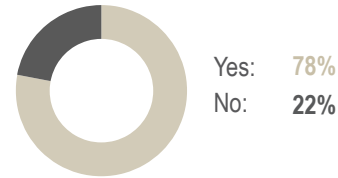
No humanitarian assistance was available
Not aware if assistance was available
Distribution points were too far or the routes were inaccessible



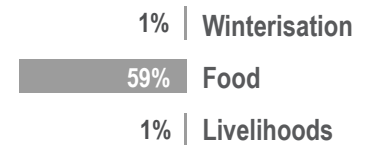
Most commonly reported **first, second, and third** and **overall** priority needs for IDPs ^{2,3,†,g}

	FIRST	SECOND	THIRD	OVERALL
1	Shelter	Winterisation	Livelihoods	Winterisation 64%
2	Food	Food	NFIs	Food 55%
3	Winterisation	Livelihoods	Winterisation	Livelihoods 49%

% of communities where any of the IDP households were able to access humanitarian assistance [‡]



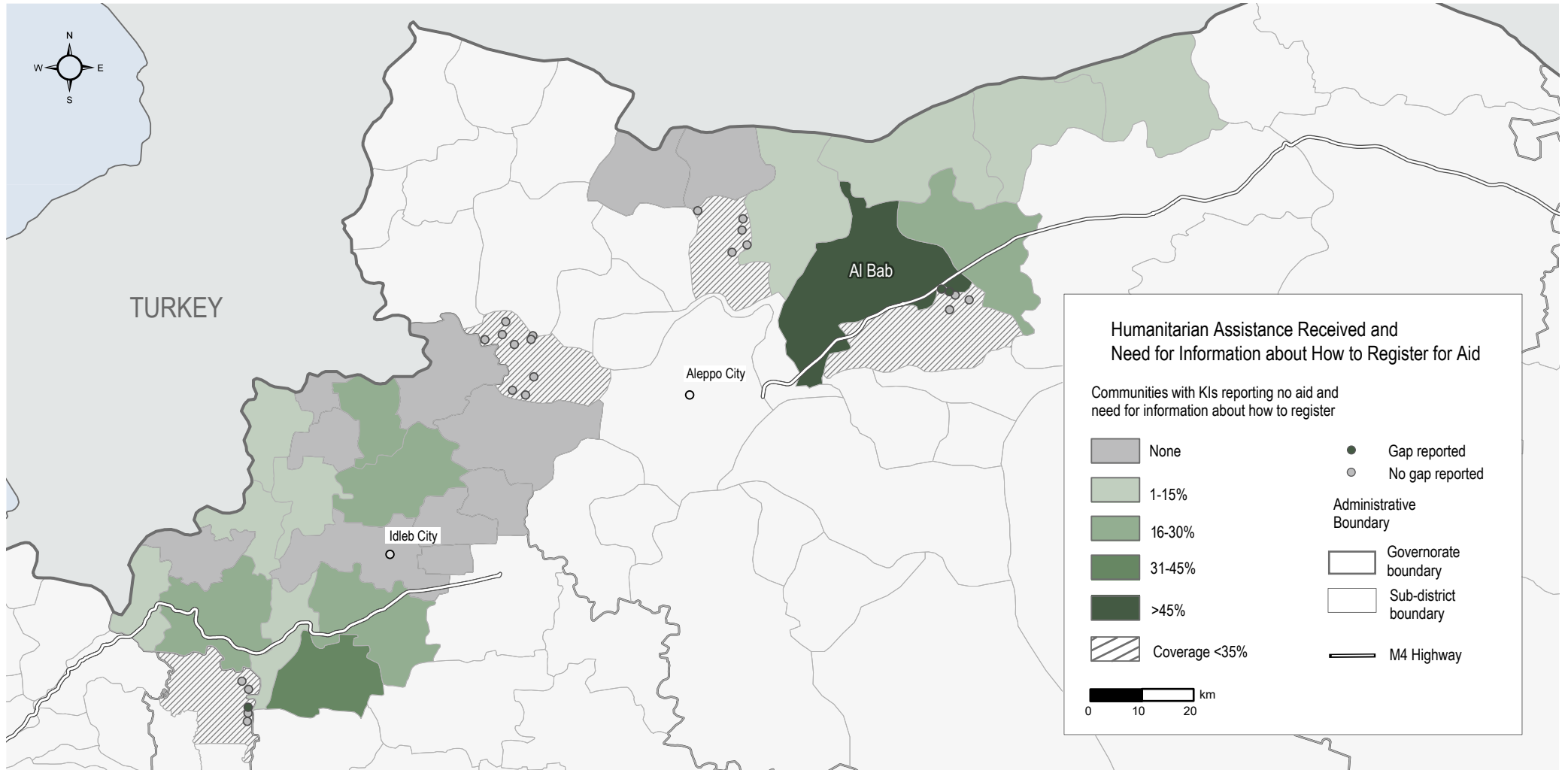
% of communities where KIs reported the presence of the following **types of assistance** for IDPs ^{4,†}



Most commonly reported barriers that IDP households faced in accessing humanitarian assistance ^{4,†}

Communities reporting access to humanitarian assistance		Communities reporting no access to humanitarian assistance	
Assistance provided was insufficient to cover all people in need	64%	1	81%
Assistance provided was not relevant to all needs	59%	2	17%
Quantity of assistance provided to households was insufficient	47%	3	9%
			81%
			17%
			9%

No humanitarian assistance was available
Not aware if assistance was available
Distribution points were too far or the routes were inaccessible



Humanitarian Assistance Received and Need for Information about How to Register for Aid

Note on the map

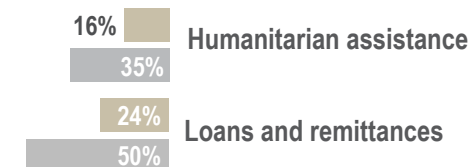
This map shows the proportion of communities reporting both no aid and an unmet need for information about how to register for aid. To accurately represent findings, in sub-districts where fewer than 35% of communities were assessed, information is displayed at the community level. In subdistricts where at least 35% of communities were assessed, information is aggregated up to the sub-district level.



Economic Conditions

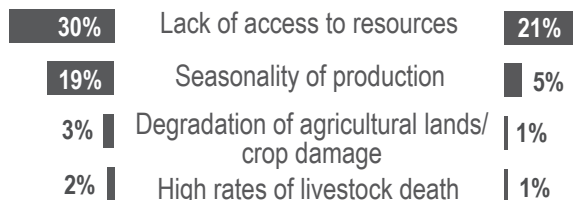
Region	Estimated median monthly household expense for water for a household of six ^{5,6}			Estimated median monthly rent price for a two bedroom apartment ^{5,6}			Estimated median daily wage for unskilled labour ^{5,7,8}		
	SYP	TRY	USD	SYP	TRY	USD	SYP	TRY	USD
Northwest Syria	14,363 SYP			28,725 SYP			3,500 SYP		
Greater Idleb area	14,363 SYP			35,906 SYP			3,000 SYP		
Northern Aleppo	15,000 SYP			25,000 SYP			4,000 SYP		
% of communities where indicator was reported in following currencies	56%	44%	0%	57%	29%	14%	100%	/	/

% of communities where KIs reported the presence of residents and IDP households relying on non-productive sources of livelihoods to meet their basic needs ^{4,*}



Reported barriers to accessing income from agriculture to meet basic needs ^{4,*}

Residents



IDPs

90% and 95%

% of communities where KIs reported daily waged labour as a common source of income for residents and IDPs ^{*}

73 days

Number of days the average day labourer would need to work to earn the monthly cost of basic SMEB items ^{5,9}

95% and 54%

% of communities where KIs reported the insufficient income of households and general lack of employment opportunities as barriers to meeting basic needs ^{8,*}



KIs in 94% of communities where challenges for renting shelters were reported, cited that rent prices were unaffordable for the majority of people



KIs in 70% of communities where barriers to accessing electricity were reported, cited the high cost of fuel for generators as a common challenge



KIs in 85% of communities where barriers to accessing sufficient water were reported, cited the high cost of water trucking as a common challenge



KIs in 84% of communities where barriers to accessing sufficient food were reported, cited the high cost of food as a common challenge ⁸



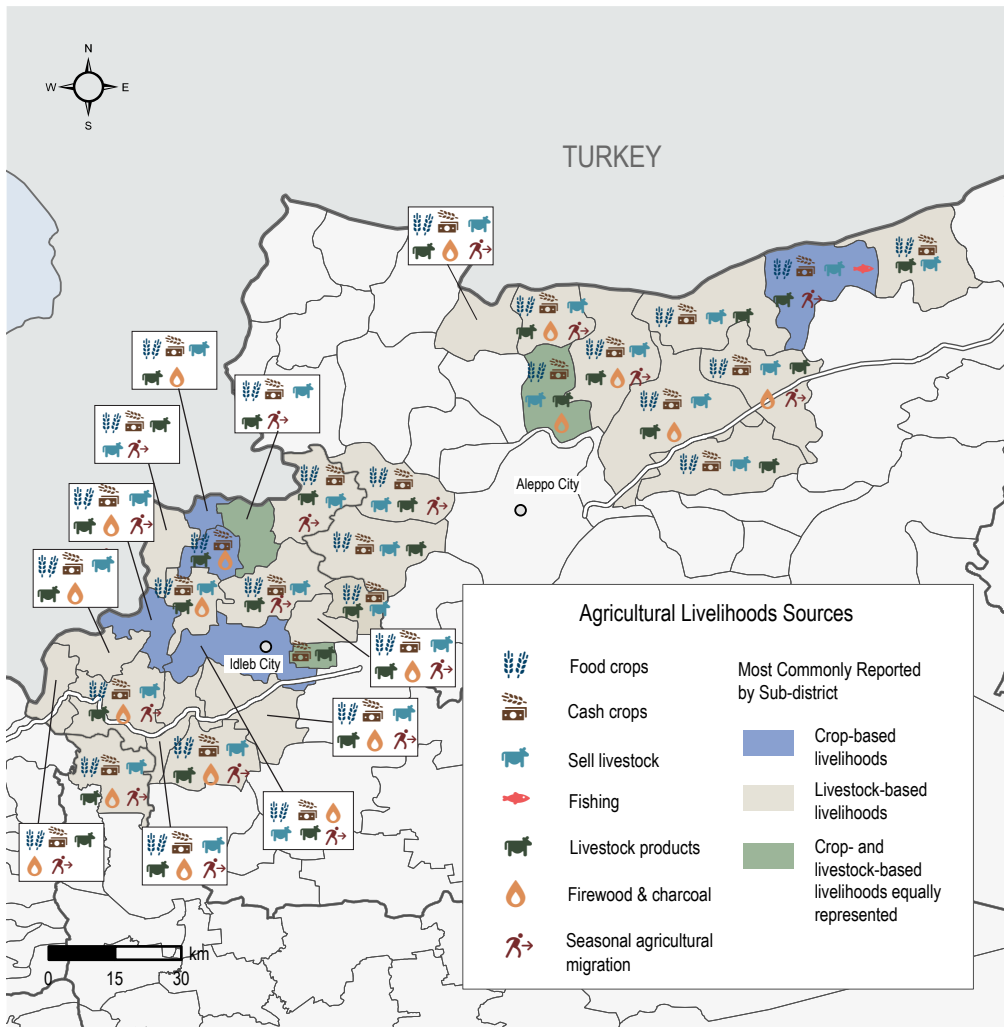
KIs in 45% of communities where barriers to accessing healthcare were reported, cited the high cost of health services as a common challenge



KIs in 27% of communities where barriers to education access were reported, cited the high cost of a private tutor as a common challenge ⁸

Reported common livelihood sources from agriculture ^{4,*}

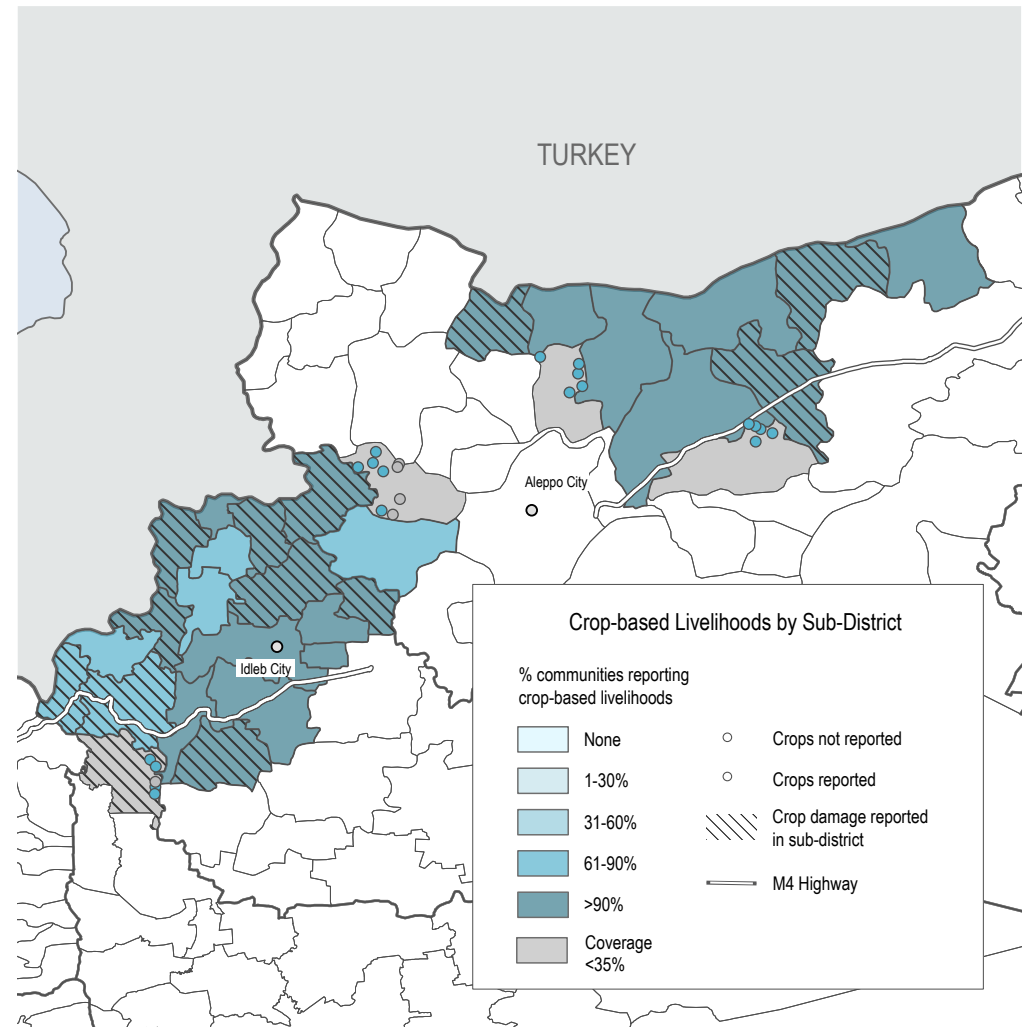
Livelihood source	Residents	IDP
Food from crop production	66%	10%
Cash from crop production	66%	4%
Livestock products	65%	53%
Sale of livestock	20%	28%



Agricultural Livelihoods Sources by Sub-District

Note on the map

This map shows the distribution of agricultural livelihoods sources by sub-district. Each icon represents a different source of income reported by KIs. The shading of the sub-districts indicates which type of agricultural livelihood was most commonly reported.



Crop-Based Livelihoods and Reported Damage

Note on the map

This map shows the distribution of crop-based livelihoods and reported damage to cropland by sub-district. The hatched sub-districts contain communities in which crop damage was reported by KIs. To accurately represent findings, in sub-districts where fewer than 35% of communities were assessed, information is displayed at the community level.



Living Conditions

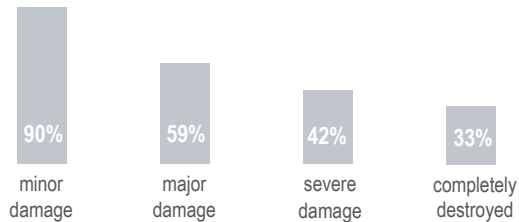


A lack of bathing facilities was reported as a shelter issue for IDPs in **11%** of communities [♦]



A lack of toilets was reported as a shelter issue for IDPs in **23%** of communities [♦]

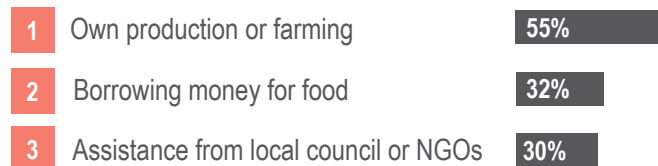
Reported presence of occupied shelters with damage across communities where damages reported ^{5,10,♦}



96% % of communities where KIs reported that households experienced barriers to accessing sufficient food ⁸

In 27% of these communities, KIs reported that the unavailability of certain food items was a challenge to accessing sufficient food ⁸

Commonly reported **sources of food** for households other than markets ⁴



In **92%** of communities reportedly at least **80%** of the resident population owned their shelter [♦]

In **67%** of communities reportedly **none** of the IDP households owned their shelter [♦]

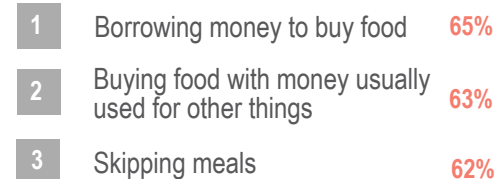
In **36%** of communities at least one fifth of the IDP population reportedly lived in unfinished or abandoned residential buildings [♦]

In **58%** of communities at least one fifth of the IDP population reportedly lived in tents [♦]



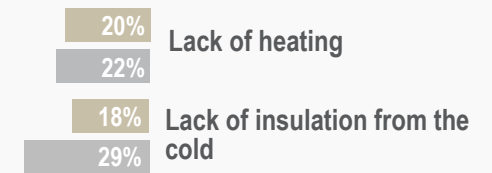
High price of suitable food or formula was the most commonly reported challenge to feeding young children (reported by KIs in 94% of communities) ^{12,♦}

Most commonly reported coping strategies for a lack of food ^{4,♦}

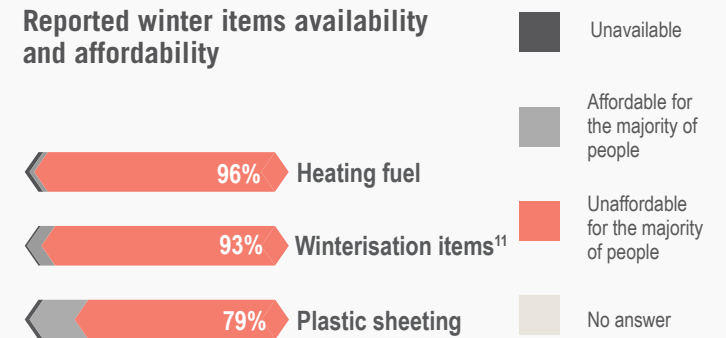


Winter-related findings

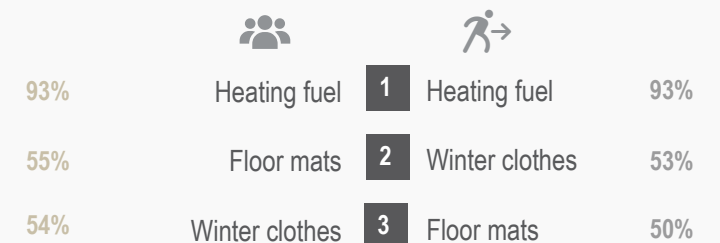
Winter-related shelter inadequacies for residents and IDPs [♦]



Reported winter items availability and affordability



Top three most commonly reported winterisation needs for residents and IDPs [♦]





Access to Basic Services



Access to Electricity

5-6 hrs per day

was the most commonly reported range for hours of electricity accessible to households (reported by KIs in 37% of communities)

Solar panels

was the most commonly reported main source of electricity (reported by KIs in 45% of communities)

56%

% of communities where KIs reported the main network is partially or completely not functioning as a barrier for electricity access [†]



Access to Water

70%

% of communities where KIs reported that not all households had access to sufficient water



7 days	0%
5-6 days	3%
3-4 days	5%
1-2 days	44%
0 days	48%

Days per week water from the network was available (by % of 431 communities connected to a water network)

Private water trucking

was the most commonly reported source of drinking water (reported by KIs in 41% of communities)

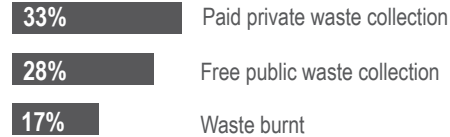


Access to Sanitation

45%

% of communities where KIs reported that no sewage system was present

Most commonly reported ways people disposed of solid waste



43%

% of communities where KIs reported waste removal services as a WASHⁱ priority need [‡]



Access to Markets

21%

% of communities in which households reportedly were unable to access markets in the assessed location

Not enough consumers to support markets in the assessed location

was the most commonly reported reason for why markets were not functioning (reported by KIs in 66% of communities where households were unable to access markets in their own location)

59%

% of communities where KIs reported that the lack of transportation to markets was a barrier to physically accessing food markets [†]

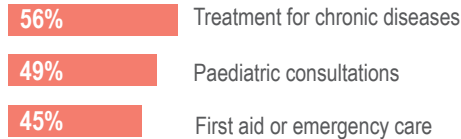


Access to Health Services

49%

% of communities where KIs reported that the households did not have access to health services in the assessed location

Most commonly reported health priority needs [‡]



Going to a pharmacy instead of a clinic

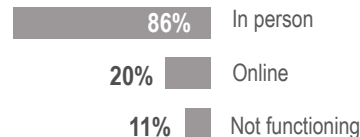
was the most commonly reported coping strategy for a lack of healthcare (reported by KIs in 86% of communities) [†]



Access to Education Services

19

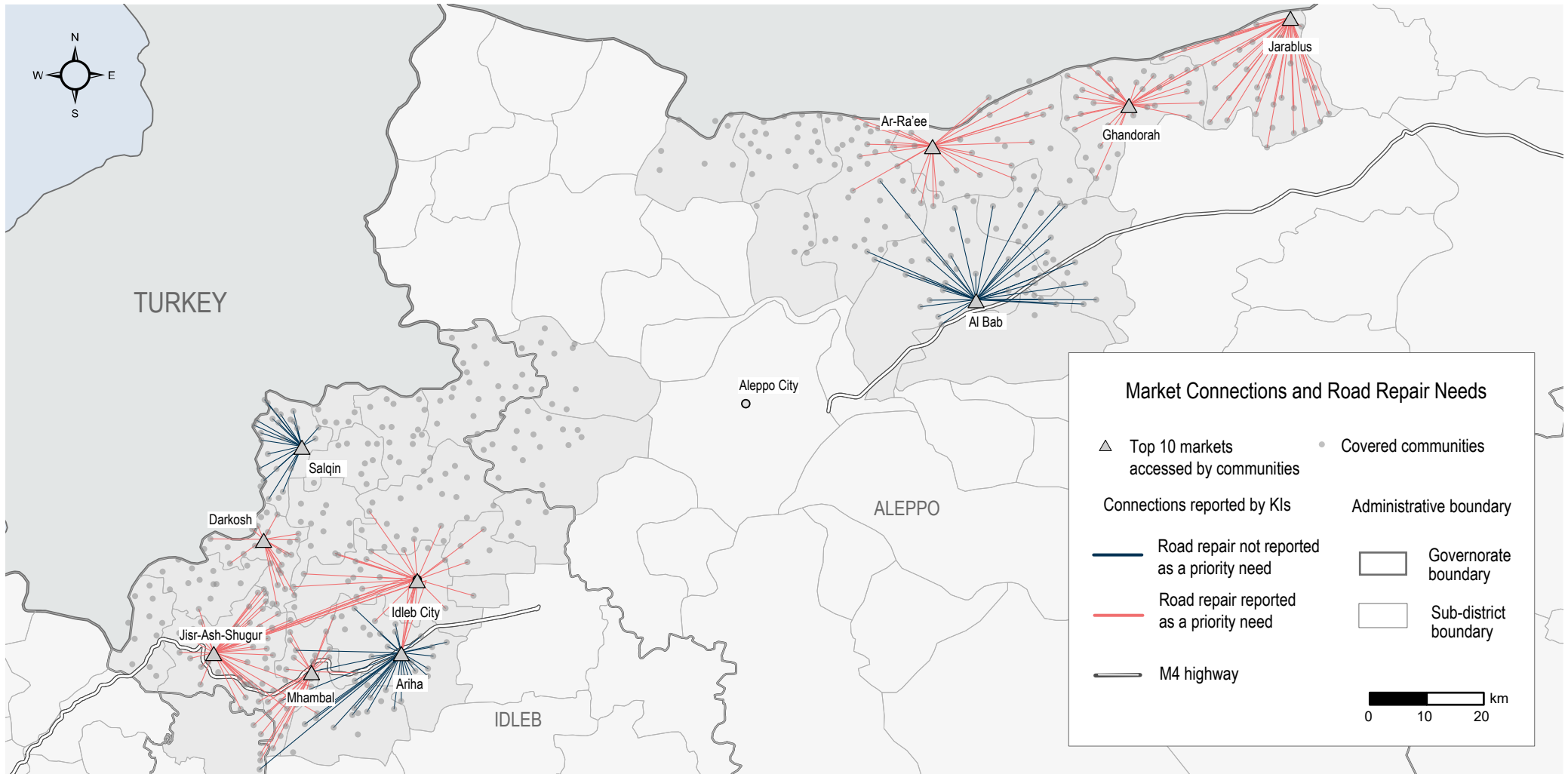
communities where KIs reported that no functioning education services were available in the assessed and nearby community [‡]



% of communities where KIs reported on the functioning of education services in the assessed location [‡]

28%

% of communities where KIs reported that the lack of access to internet, electricity and/or equipment was a barrier to accessing (online) education services ^{‡,†}



Market Connections and Road Repair needs

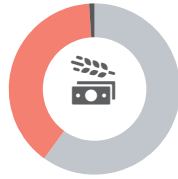
Note on the map

This map shows the connections between assessed communities and the market centres most commonly identified by KIs. One line represents one connection, and red lines denote cases where KIs also identified road repair between communities as a priority need. This need was most often reported in southern Idlib, where ongoing conflict near the M4 highway has resulted in material damage to infrastructure.



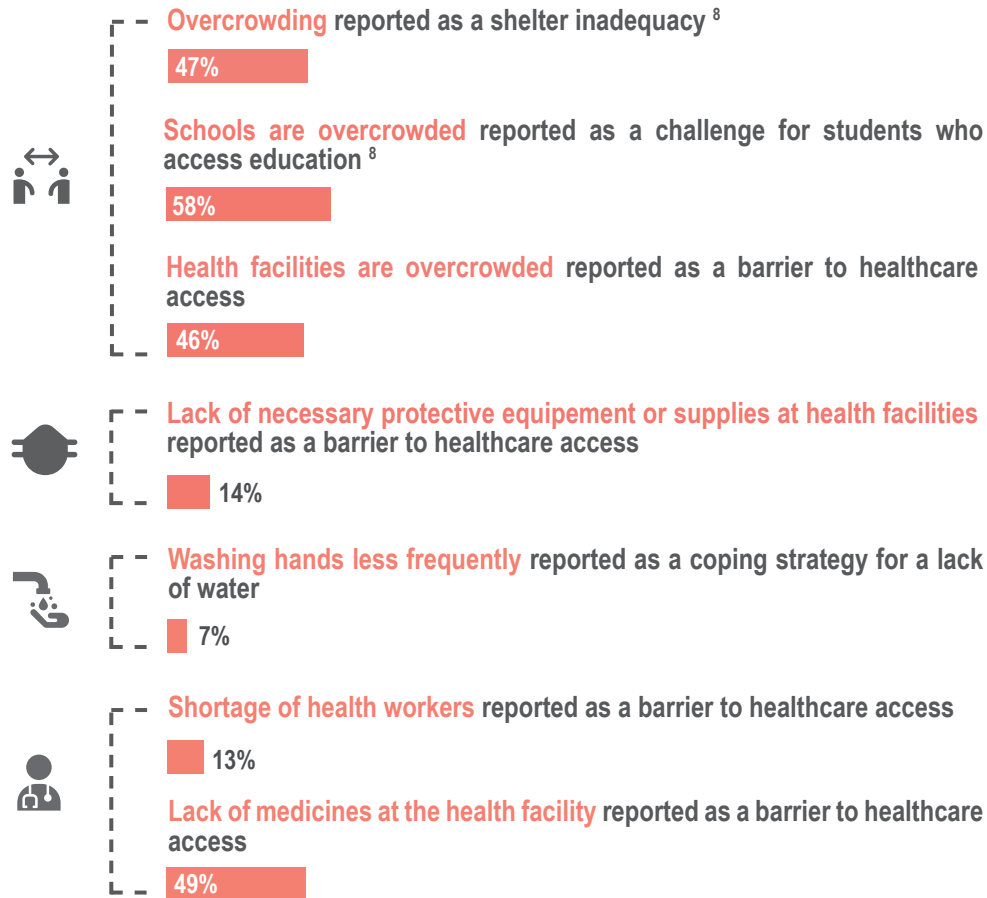
COVID-19

Effects of COVID-19 on livelihoods sectors in the community

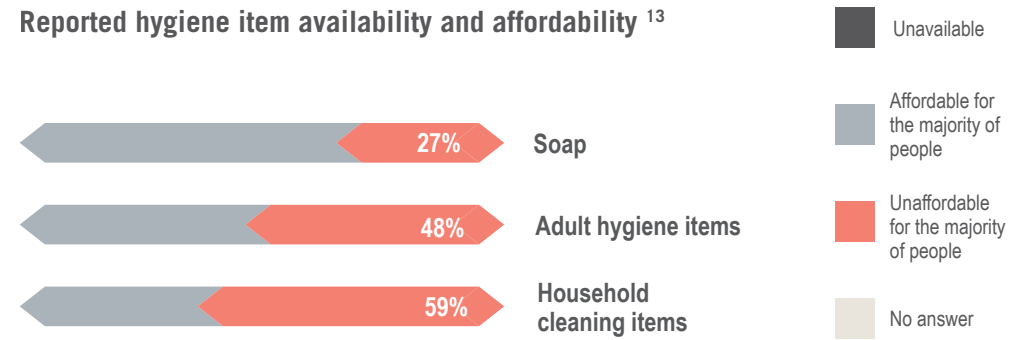


Not affected	60%
Partially affected	39%
Totally affected	1%

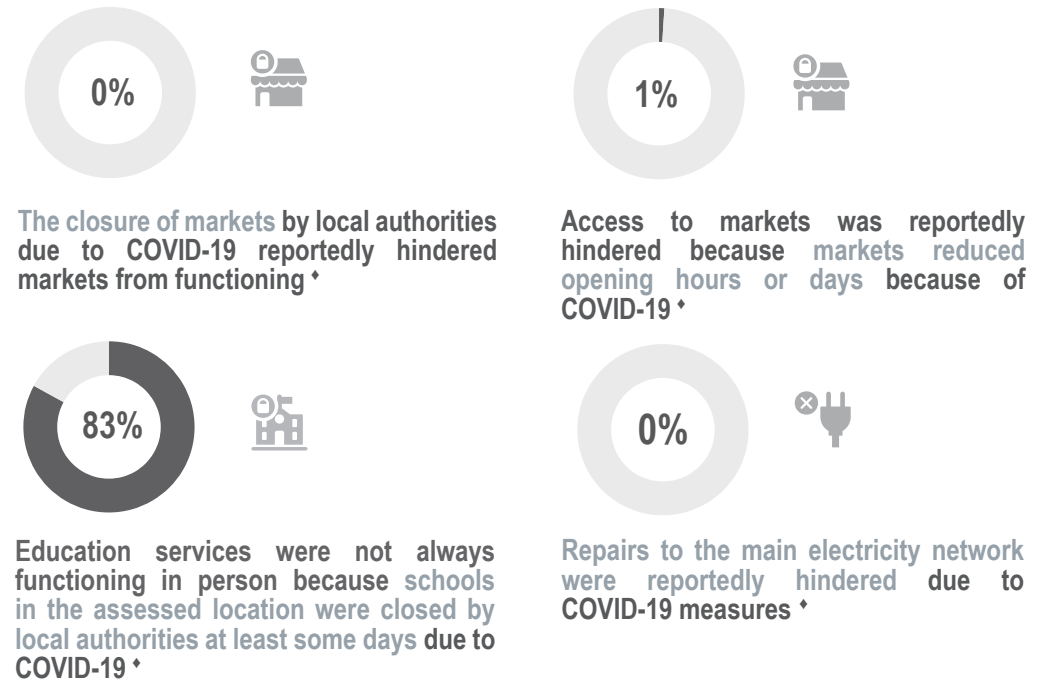
COVID-19 risk indicators *

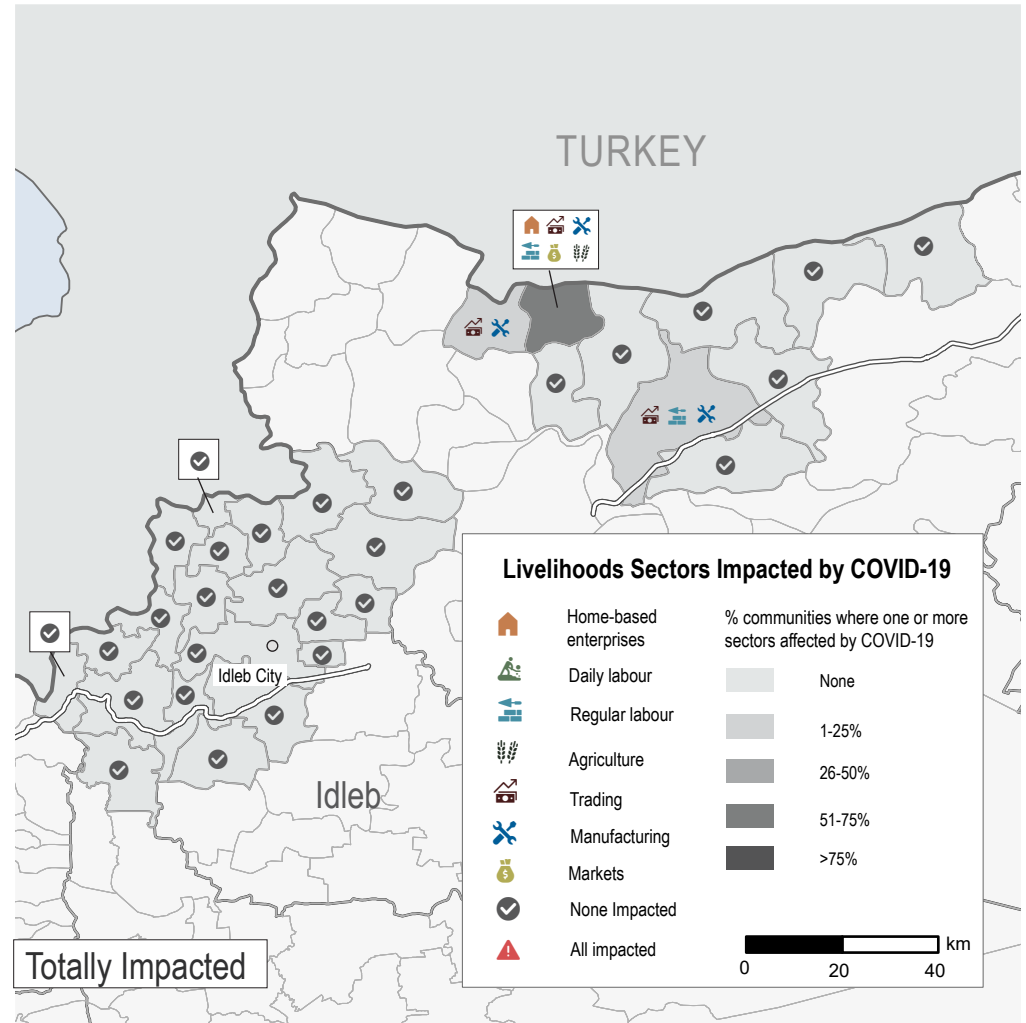
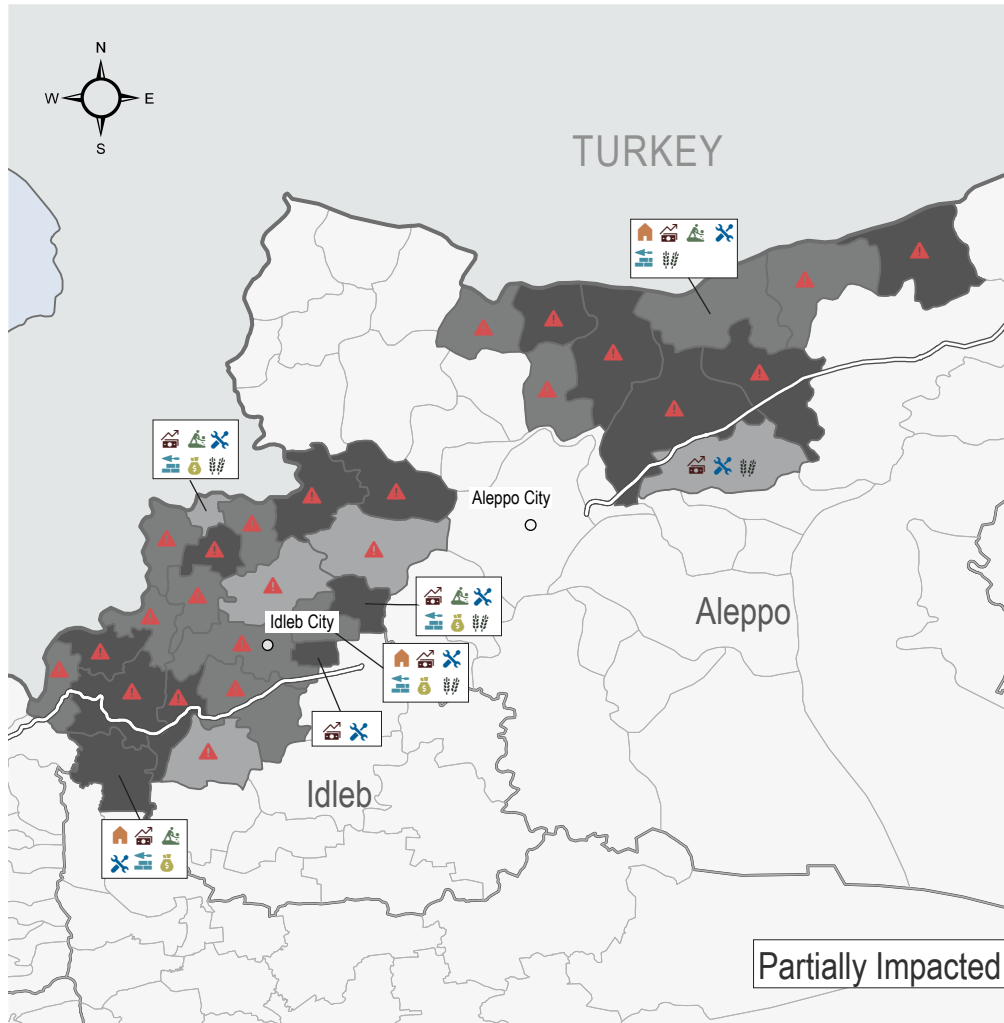


Reported hygiene item availability and affordability ¹³



COVID-19-related barriers to access to services





Livelihoods Sectors Impacted by COVID-19

Note on the map

This map shows the distribution of sectors partially and totally impacted by COVID-19. The shading of sub-districts indicates the percentage of communities where at least one sector has been affected. While partial disruptions were reported in every sub-district, KIs in three sub-districts in western Aleppo reported that sectors were totally impacted.



Security and Protection

Intersectoral findings on security

-  **General safety and security concerns restricting movement to markets** was a reported barrier to market access in **9%** of communities [♦]
- General safety and security concerns at markets** was a reported barrier to market access in **22%** of communities [♦]
- Markets not opening because of security issues** was a reported barrier to markets not functioning in **13%** of communities [♦]
-  **Threat from airstrikes** was reported as a protection risk in **117 communities** ⁸
- Threat from shelling, sniper or gunfire** was reported as a protection risk in **92 communities** ⁸
- Threat from improvised explosive devices (IEDs), mines or unexploded ordnances** was reported as a protection risk in **62 communities** ⁸
- Fear from imminent conflict** was reported as a protection risk in **57 communities** ⁸
-  **The inability to lock homes securely** was reported as a shelter inadequacy in **41%** of communities ^{8, ♦}
- Lack of lighting around the shelter** was reported as a shelter inadequacy in **83%** of communities ^{8, ♦}
- The security situation** was reported as a barrier to shelter repairs in **16%** of communities [♦]
-  **General safety and security concerns at the health facility** was reported as a barrier to healthcare in **11%** of communities [♦]

Most commonly reported protection priority needs ^{3, 8, ♦}

- 1 79%** Special assistance for vulnerable groups
- 2 50%** Psychosocial support
- 3 38%** Specialised child protection services

Findings on the reported lack of civil documentation for residents and IDPs [♦]

- 36%** Lack or loss of civil documentation as a protection risk
- 49%** Lack of personal documentation required to enroll in school as a barrier to education access
- 8%**
- 14%**

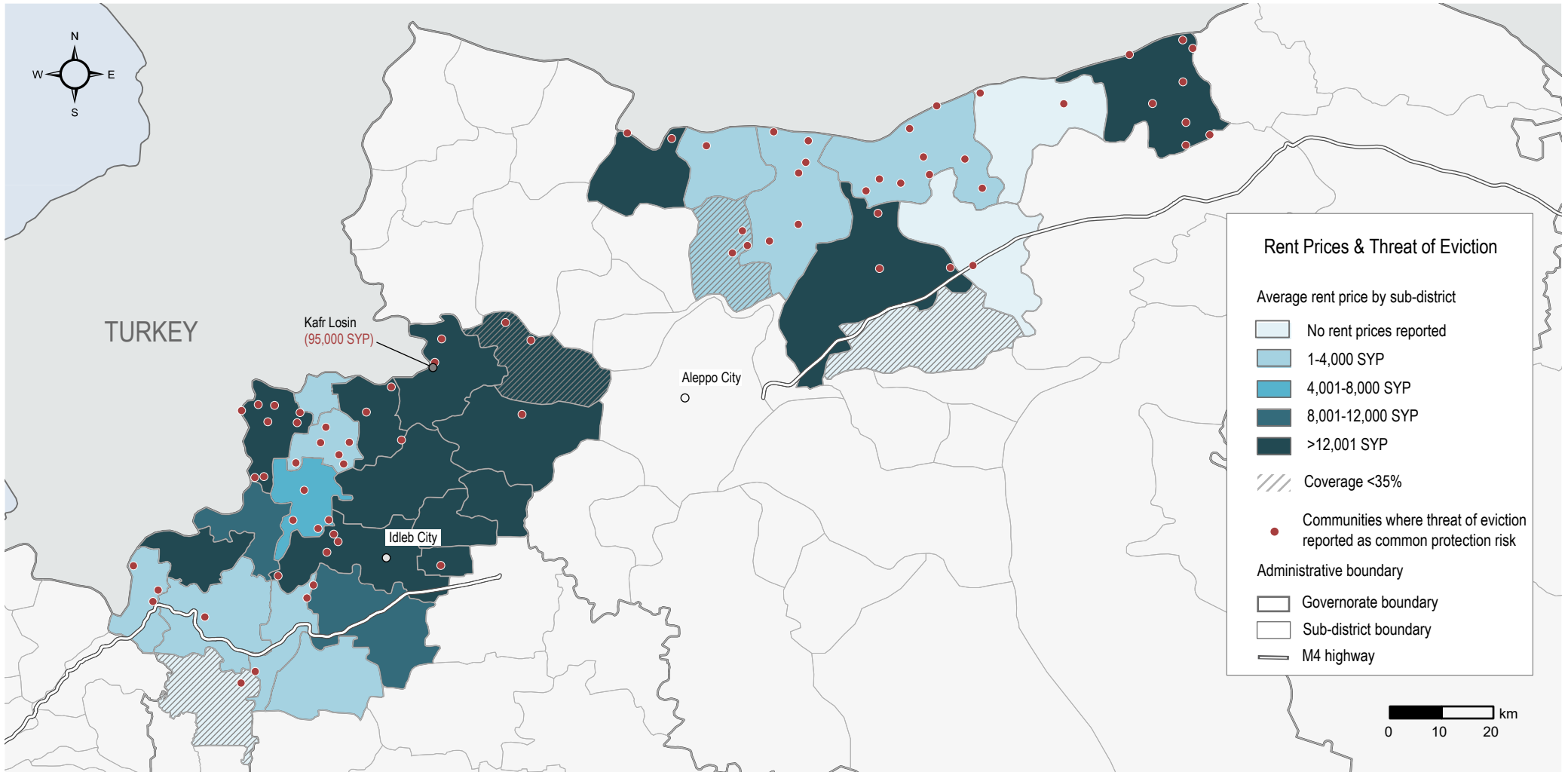
Reported extreme coping strategies used by residents and IDPs to meet basic needs ^{♦, 4}

Residents		IDPs
38%	Early marriage	45%
4%	Forced marriage	4%
8%	High risk work	8%
1%	Sending family members to beg	4%
72%	Sending children (15 or below) to work	78%

Age, Gender, and Diversity

- KIs in **56%** of communities reported a **lack of employment opportunities for women** as a barrier to meeting basic needs ^{8, ♦}
- KIs in **39%** of communities reported a **lack of employment opportunities for persons with a disability** as a barrier to meeting basic needs ^{8, ♦}
- KIs in **17%** of communities reported a **lack of privacy for women and girls at health facilities** as a barrier to healthcare access [♦]
- KIs in **50%** of communities reported a **lack of market access for people with restricted mobility** [♦]

- Child labour** and **early marriage** were reported to prevent children from going to school in **78%** and **44%** of communities ^{8, ♦}
- Children below the age of 12** were reported as a group affected by child labour in **21%** of communities ^{8, ♦}
- Hazardous child labour** was reported as a protection risk in **8%** of communities ^{8, ♦}



Average Rent Prices and Threat of Eviction

Note on the map

This map shows the average rent price by sub-district, along with communities where threat of eviction was reported as a protection risk. To accurately represent findings, a hash pattern is placed over sub-districts where fewer than 35% of communities were assessed. The map indicates no obvious relationship between threat of eviction and higher rent prices.

Endnotes

1. The greater Idleb area includes Idlib governorate, parts of Aleppo western countryside, and parts of Hama northwestern countryside controlled by armed opposition groups (AOGs).
 2. KIs were asked to select a first, second, and third highest priority needs in their communities. The ranking shows the sectors most frequently chosen as either first, second or third highest priority. The overall priority need refers to the frequency a sector was selected across all three categories (first, second or third highest priority).
 3. KIs could select three answers, thus findings might exceed 100%.
 4. KIs could select multiple answers, thus findings might exceed 100%.
 5. KIs were asked about the situation currently, instead of the last 30 days.
 6. KIs had the option to select the price in United States Dollars (USD), Turkish Lira (TRY), or Syrian Pounds (SYP). When the price was not reported in SYP, the NWS **REACH Market Monitoring** exchange rate was used to calculate the amount in SYP. According to the NWS REACH Market Monitoring November 2020, 1 USD = 2,385; 1TRY= 287.25.
 7. According to the NWS **REACH Market Monitoring** November 2020, 1 USD = 2,385 SYP.
 8. Findings for residents and IDPs were merged. The merge was calculated as follows: (option was selected for either residents or IDPs) / (communities reporting challenges/barriers/coping strategies for either residents or IDPs).
 9. According to the NWS **REACH Market Monitoring** November 2020, the Survival Minimum Expenditure Basket (SMEB) = 254,413 SYP.
 10. Minor damage (cracks in walls, leaking roof, need of new doors and window repairs, etc.); Major damage (buildings with extensive damage to window frames and doors, but no structural damage to columns, slabs, or loadbearing walls); Severe damage (buildings with significant structural damage to column slabs, or loadbearing walls, cracking, steel elements and deformations visible in concrete; the building would require extensive repairs); Completely destroyed (buildings with structural damage so significant that rehabilitation is not possible).
 11. Winterisation items include: winter clothes, winter shoes, and winter blanket.
 12. KIs were asked about the situation in the last two months, instead of the last 30 days.
 13. Adult hygiene items include: shampoo, toothbrush, and toothpaste. Household cleaning items include: washing powder, liquid, and dish detergent.
- e. Information provided by REACH field teams

◆ By number of communities where KIs reported the relevant indicator (accesses/barriers/inadequacies/damages/coping strategies/risks etc.) for the relevant population group(s)

<i>Indicator</i>	<i>Subset</i>	<i>Indicator</i>	<i>Subset</i>
<i>N.o of communities reporting on:</i>		<i>N.o of communities reporting on:</i>	
Residents	588	Coping strategies for a lack of food	569
IDPs	565	Coping strategies for a lack of healthcare	592
Barriers to accessing healthcare	592	Coping strategies for a lack of water	414
Barriers to accessing sufficient food	569	Groups affected by child labour	447
Barriers to accessing sufficient water	414	Health priority needs (merged)	588
Barriers to education access (IDPs)	487	Main protection risks (IDPs)	535
Barriers to education access (merged)	512	Main protection risks (merged)	558
Barriers to education access (residents)	491	Main protection risks (residents)	547
Barriers to education quality (merged)	486	Protection priority needs (merged)	584
Barriers to feeding young children	565	Reasons education services not funct.	356
Barriers to assistance access (IDPs)	442	Shelter damages	580
Barriers to assistance access (resident)	439	Shelter issues/inadequacies (IDPs)	554
Barriers to markets functioning	125	Shelter issues/inadequacies (merged)	582
Barriers to physically accessing markets	508	Shelter issues/inadequacies (resident)	542
Barriers to shelter repairs	511	Tents (IDPs)	330
Challenges for renting shelters	440	Unfinished or abandoned buildings (IDPs)	283
Cop. strategies to meet basic needs (IDPs)	565	WASH priority needs (merged)	589
Cop. strategies to meet basic needs (res)	587		

About REACH

REACH facilitates the development of information tools and products that enhance the capacity of aid actors to make evidence-based decisions in emergency, recovery and development contexts. The methodologies used by REACH include primary data collection and in-depth analysis, and all activities are conducted through inter-agency aid coordination mechanisms. REACH is a joint initiative of IMPACT Initiatives, ACTED and the United Nations Institute for Training and Research - Operational Satellite Applications Programme (UNITAR-UNOSAT). For more information please visit our website: www.reach-initiative.org. You can contact us directly at: geneva@reach-initiative.org.