

Syria - Az Zabdani, Damascus

Shelter Damage Assessment as of 2nd April 2016

For Authorized Distribution Only - For Humanitarian Purposes Only
Production Date: 16 November 2016



Damage Zones 02.04.2016

- Destroyed, High Density
- Severe Damage, High Density
- Moderate Damage, High Density
- Destroyed, Low Density
- Severe Damage, Low Density
- Moderate Damage, Low Density

802 Buildings Damaged as of April 2016

119 destroyed
206 severely damaged
477 moderately damaged

Damage Density - Az Zabdani Urban Centre as of 02.04.2016

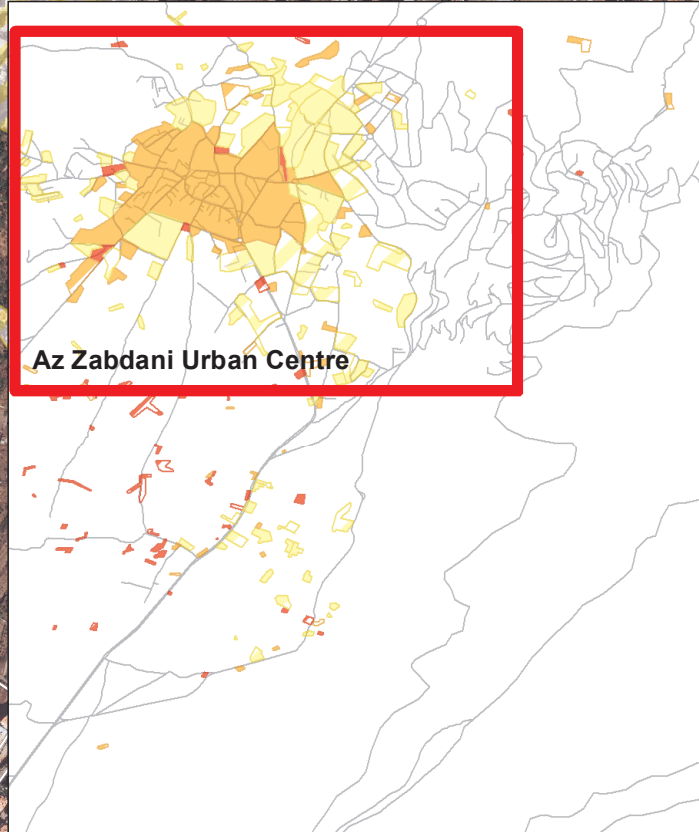
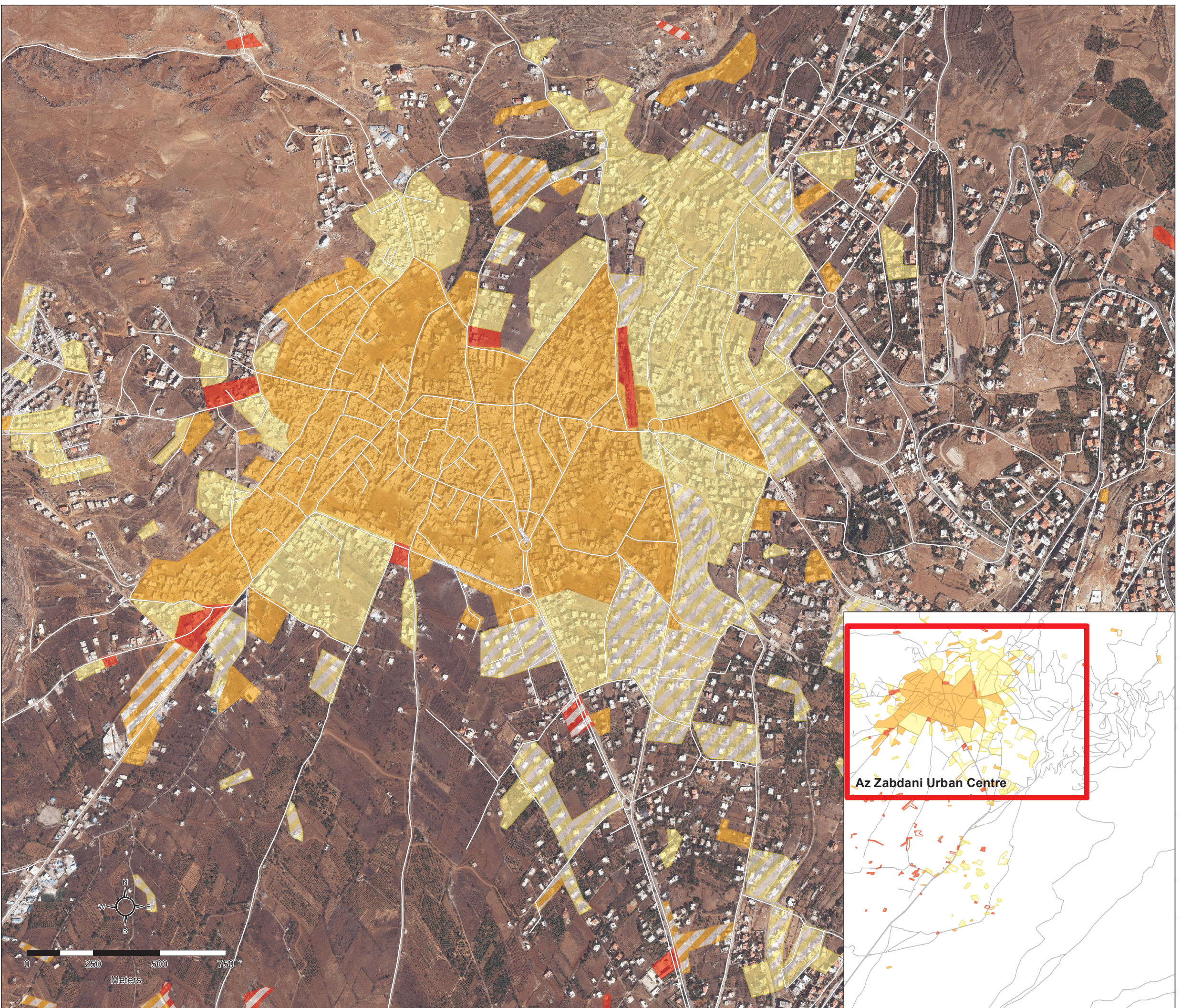
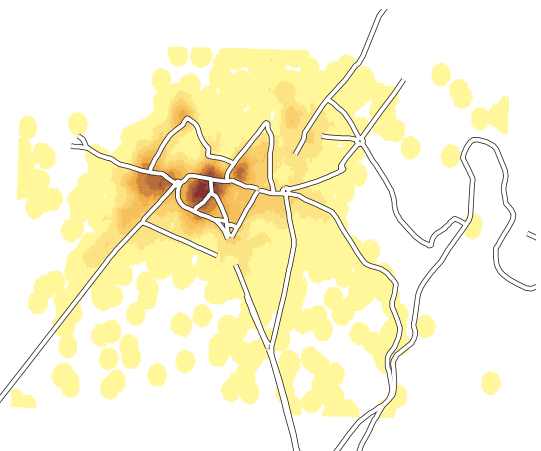


Image copyright: DigitalGlobe, Imagery provided by: U.S. Department of State, Humanitarian Information Unit, NextView License - WV02 - Resolution 0.50 cm - Date: 02.04.2016
Shelter Damage Assessment Data: UNOSAT/REACH
Projection: WGS 1984 UTM Zone 37N
File:REACH_SYR_Damage_Assessment_Az_Zabdani_2Apr16_A3
Contact: reach.mapping@impact-initiatives.org

Note: Data, designations and boundaries contained in this map are not warranted to be error-free and do not imply acceptance by the REACH partners, donors and associated persons mentioned in this map.