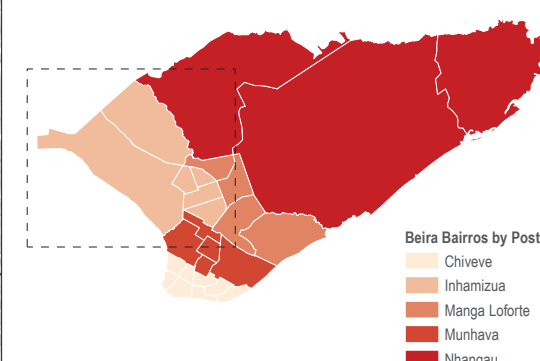
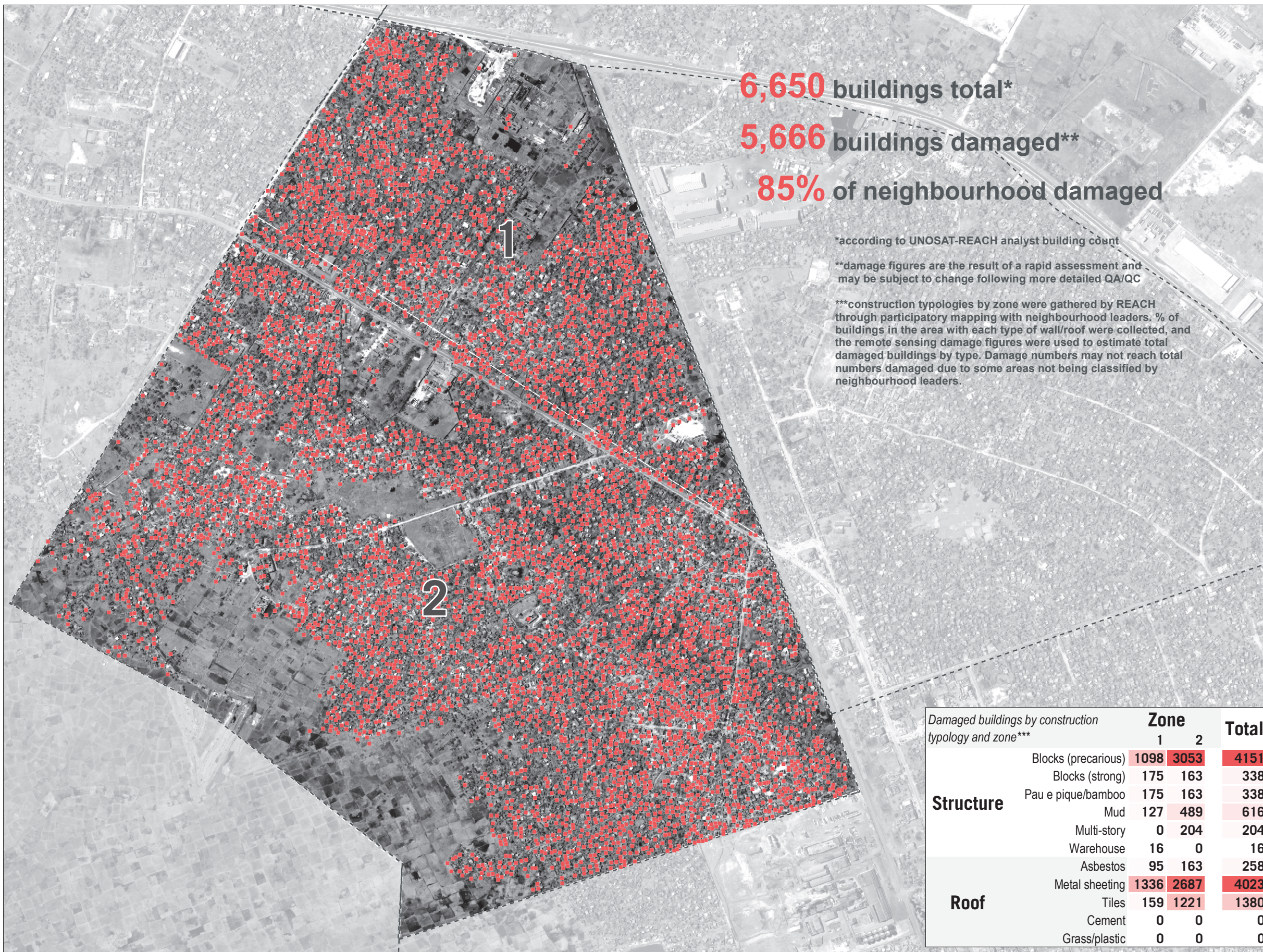


MOZAMBIQUE - Beira City

Villa Massane - Structural Damage by Construction Typology - As of 26 March

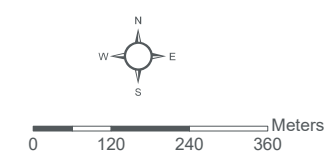


	Zone		Total	
	1	2		
Structure	Blocks (precarious)	1098	3053	4151
	Blocks (strong)	175	163	338
	Pau e pique/bamboo	175	163	338
	Mud	127	489	616
	Multi-story	0	204	204
	Warehouse	16	0	16
Roof	Asbestos	95	163	258
	Metal sheeting	1336	2687	4023
	Tiles	159	1221	1380
	Cement	0	0	0
	Grass/plastic	0	0	0

Data sources:
Damage sites - UNOSAT-REACH
Beira Bairros - INGC
Bairros Delineation - REACH
Administrative Boundaries (0-3) - OCHA
Satellite Imagery: WorldView-2 from 26 March 2019
Copyright: ©DigitalGlobe 2019
Source: US Dept of State Humanitarian Information Unit, NextView License

Legend

- Damaged Buildings
- Bairros



Coordinate System: GCS WGS 1984
File: MOZ_Map_CycloneIdai_Beira_DamageByType_VillaMassane_30APR2019
Contact: reach.mapping@impact-initiatives.org

Note: Data, designations and boundaries contained on this map are not warranted to be error-free and do not imply acceptance by the REACH partners, associated, donors mentioned on this map.

