



# UN House PoC 1 Snapshot

Juba County, Central Equatoria State, South Sudan

South Sudan Displacement Crisis

October 2015

## Summary

Protection of Civilians site 1 (PoC 1) was the first established site of three PoCs at the UN House site in Juba which was established in December 2013.

In the past month 876 new arrivals were recorded and 76% of those are coming from Unity State. These IDPs are not included in the official registered figure. In total since the last registration, May 2015, 2297 new arrivals were reported to the ACTED information desk.

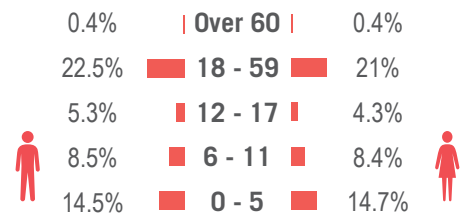
Data was provided by IOM (as of 01/10/2015) and camp manager (as of 05/10/2015) spatial data was provided by REACH (as of 23/01/2015).

## Implementing Agencies

	<b>EDUCATION</b>	Interos, NRC, DMI
	<b>FOOD</b>	Concern
	<b>HEALTH</b>	IMC, Handicap International, Magna, Concern (Nutrition)
	<b>PROTECTION</b>	IRC, Nonviolent Peaceforce, UNFPA
	<b>SHELTER / NFI</b>	LCED
	<b>WASH</b>	Solidarités International, Theso

## Demographics

51.2% male / 48.8% female\*



\* Population figure by camp manager (as of 6 Oct 2015)

## Site Overview

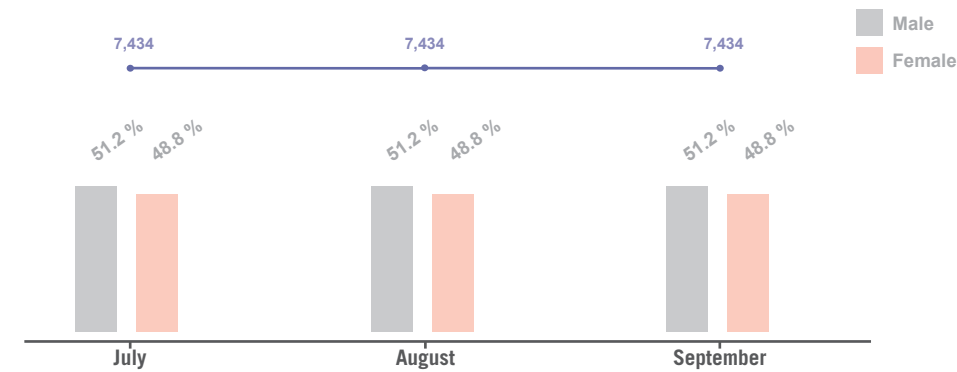
<b>Site management:</b>	ACTED
<b>Site population:</b>	7,434
<b>Accommodation:</b>	2,636 structures
<b>Planned capacity:</b>	3,148 structures
<b>Site area:</b>	94,987 m <sup>2</sup>
<b>IDP County of origin</b>	
1 <sup>st</sup> largest group	Juba County
Other large groups	Rubkona County

## CCCM Mechanisms

The following structures are in place:

- ☒ **Camp management committee**
- ☒ **Block leaders**
- ☒ **Other committees**
  - Women & Youth
  - Religious leaders
  - Community watch group

## Demographic Trends\*\*



\*\* Figure extracted from the DTM. No extra data / information was available.

## Location Map



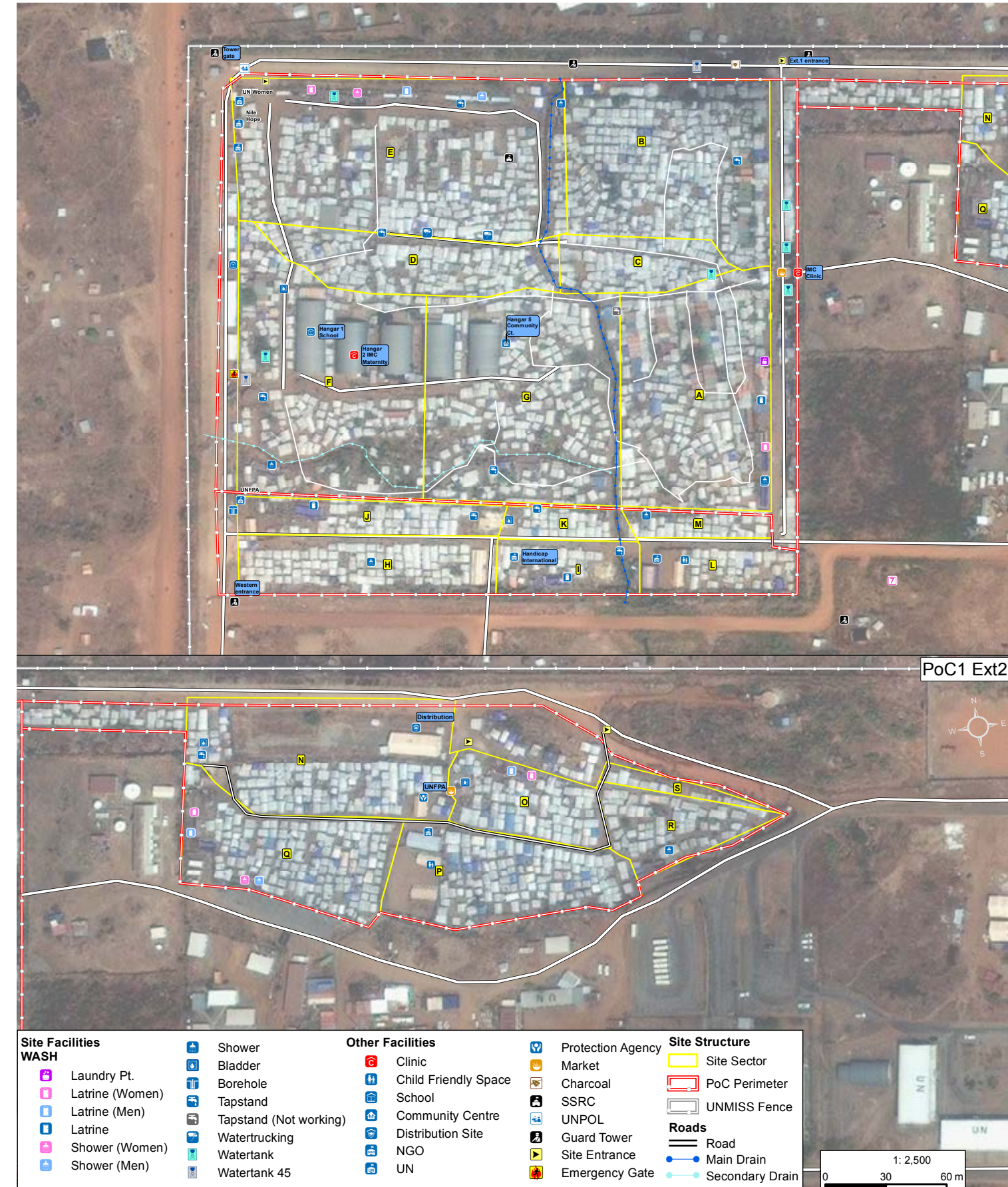
## Reported Priority Needs

Priority needs were reported and ranked by camp management as:

- 1 Water access**
- 2 Mental health / PSS**
- 3 Registration**

## PoC 1 Site Map

Lat: 4.819 Long: 31.538



## Sectoral Overview

		Target***	Achieved	
<b>Food</b>	Food accessible on-site	Yes	Yes	●
	Markets physically accessible from site	Yes	Yes	●
<b>Health</b>	Health services are available on-site or within walking distance	Yes	Yes	●
<b>CCCM</b>	Average open area per person	min. 30 m <sup>2</sup>	12.7 m <sup>2</sup>	●
	% of families living in rakoobas/tukul	min 75%	more than 75%	●
	% of families living in makeshift shelters	0%	less 25%	●
	Average number of individuals per tent	max 5	2.8	●
<b>Shelter</b>	Average covered area per person****	min 4.2 m <sup>2</sup>	5.3 m <sup>2</sup>	●
	Liters of water available per person per day	min 15 L	17 L	●
	# of persons per latrine (m/f)	max 20	49	●
<b>Water Sanitation</b>	# of persons per shower (m/f)	max 20	88	●

\*\*\* Targets are based on minimum standards agreed with the CCCM Cluster ● Target reached, ● Target more than 50% reached, ● Target less than 50% or not at all reached, ● No data

\*\*\*\* PoC 1 shelters averagely measure 15 m<sup>2</sup>