

**CONTEXT**

To inform humanitarian cash programming, REACH was requested by the Cash-Based Responses Technical Working Group (CBR-TWG) and the Food Security Sector (FSS) to conduct regular rapid market monitoring of southwest Syria, since the start of the southern offensive on 17th June 2018. The governorates covered include West Dar'a and Quneitra with the sub-district Mzeireb highlighted due to the location and prices.

REACH rapid market monitoring assesses the availability and prices of 23 basic commodities including food and non-food items, water, fuel, and cellphone data, that are necessities to living a life with dignity.

These commodities are typically sold in markets and consumed by average Syrian households. The necessary items assessed includes some vital items of the Survival Minimum Expenditure Basket (SMEB), which represents the minimum culturally adjusted items required to support a 6-person household for a month. Data was collected this month by ACTED. Datasets are available on the [REACH Resource Centre](#), [the Humanitarian Data Exchange](#) and are also distributed through partners across the humanitarian community.

**KEY DEVELOPMENTS**

**Southwest Syria: fuel and food prices increase**

Transport fuel (petrol and diesel) prices have increased by 256%, 189% and 422% in West Dar'a, Quneitra and Mzeireb respectively. In Quneitra and Mzeireb communities reported severed fuel supply routes with some of the communities having no access to fuel. Fuel prices are expected to increase in the following weeks due to the conflict and access limitations. This in turn will have a cascading impact on the prices of all other commodities which need to be transported to the governorates.

Food prices are expected to increase as access barriers become more prominent. In each governorate at least 50% of communities assessed reported severed food supply routes with 16/32 communities reporting some assessed food items as unavailable.

**Quneitra: food availability and barriers**

Throughout assessed commodities in Quneitra there was a noticeable increase in prices. Food item prices increased by a median of 10%, with 21/21 communities reporting consumer liquidity shortage as a barrier of access to food and 19/21 vendors reporting limited/no stock and insecure supply routes.

There has been a reported 61% increase in water trucking prices in Quneitra, with 3/21 communities reporting no access to water. Out of these 18 communities with water trucking access, 8 of these reported that the water was unchlorinated.

**West Dar'a: hygiene items and cellphone data prices decrease**

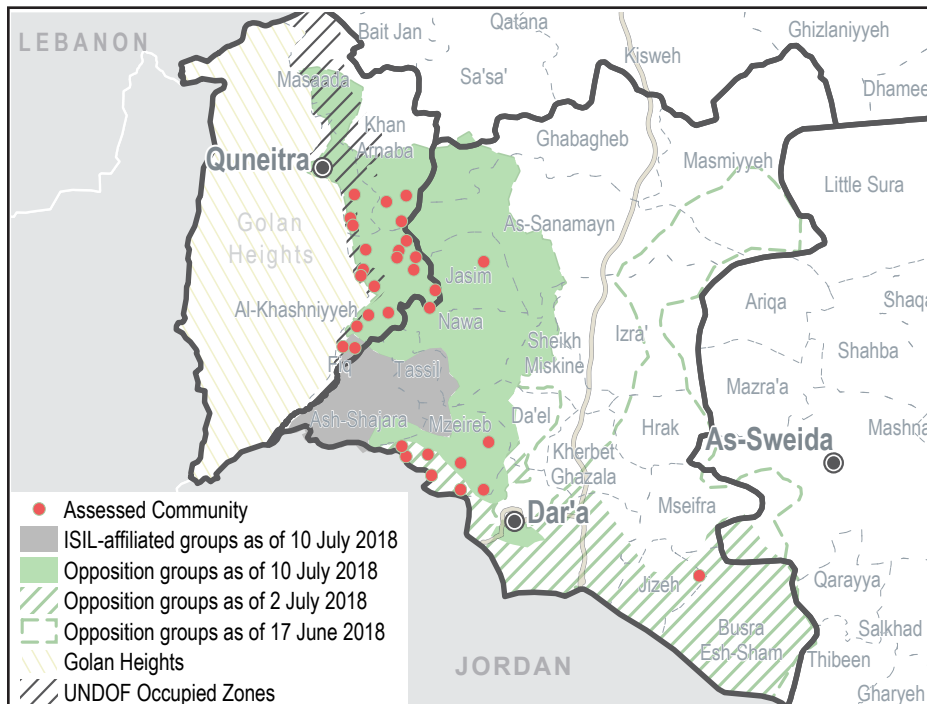
While in other governorates prices of hygiene and shelter items have been increasing, in West Dar'a assessed communities reported a median decrease of 11%. Assessed communities reported supply routes have not been severed but 2/3 communities reported some commodities are unavailable for purchase.

Assessed sub-districts reported cellphone data was available for purchase and that there had actually been a decrease in the price. The median price decrease since May was 67%.

**Mzeireb: water prices increase**

Water trucking prices have increased by 138% since May 2018. Half (4/8) of assessed communities reported no access to water trucking and 3/4 communities with water trucking reported that the water was unchlorinated.

**ASSESSED COMMUNITIES**



Areas of influence sourced from: Live UA map

**ASSESSED ITEMS**

	Item	Quantity
Food Items	Bread	37 kg
	Bulgur	15 kg
	Chicken	6 kg
	Eggs	6 kg
	Fresh vegetables	12 kg
	Ghee/vegetable oil	7 kg/L
	Red lentils	15 kg
	Rice	19 kg
	Baby Formula	1 kg
	NFI Hygiene items	Bathing soap
Sanitary pads		4 packs of 10
Tent		5 person
Plastic tarpaulin		1m <sup>2</sup>
	Jerry can	20 L
Fuel	Cooking fuel*	25 L
Water	Water trucking	4500 L
Telecom	Cellphone data	1 GB

\* LP Gas in southern Syria

## FUEL ITEMS

- **110%** increase in the median price of cooking fuel since May 2018.
- **256%** increase in the median price of transport fuel since May 2018.
- **3 of 3** communities reported having main fuel supply routes severed.
- **1 of 3** communities reported having no transport fuel available to purchase.
- **1 of 3** communities reported having no cooking fuel available to purchase.

## FOOD SECURITY

- **3%** increase in the median price of assessed food items since May 2018.
- **3 of 3** communities reported having main food supply routes severed.
- **2 of 3** communities reported some assessed food commodities as unavailable to purchase.
- **0 of 3** communities reported that people are not able to purchase food.
- **3 of 3** communities reported that people are not receiving food distributions.

## HYGIENE AND SHELTER

- **11%** decrease in the median price of assessed hygiene items since May 2018.
- **3 of 3** communities reported having main hygiene and shelter commodity supply routes severed.
- **1 of 3** communities reported some hygiene and shelter commodities are unavailable to purchase.
- **0 of 3** communities reported that people are not able to purchase hygiene and shelter commodities.
- **3 of 3** communities reported that people are not obtaining hygiene and shelter commodities through distributions.

### Top 5 most commonly reported difficulties for vendors

1. Inflation	████████████████████	3/3
2. Insecure supply routes	████████████████████	3/3
3. Trader liquidity shortage	████████████████████	3/3
4. Suppliers limited or no stock	████████████████████	3/3
5. Supplier refusal to sell	██████████	1/3

### Top 5 most commonly reported difficulties for consumers

1. Consumer liquidity shortage	████████████████████	3/3
2. Limited or no vendor supply	████████████████████	3/3
3. Insecure market place	██████████	2/3
4. Insecure route to market	██████████	2/3
5. Close shops	██████████	2/3

## ASSESSED COMMUNITIES IN WEST DAR'A



## WATER TRUCKING

- **28%** increase in the median price water trucking since May 2018.
- **0 of 3** communities reported having no access to water trucking.
- **0 of 3** communities with water trucking reported unchlorinated water.

## COMMUNICATIONS

- **67%** decrease in the median price of cellphone data since May 2018.
- **0 of 3** communities reported having no cellphone data available for purchase.

## FUEL ITEMS

- **50%** increase in the median price of cooking fuel since May 2018.
- **189%** increase in the median price of transport fuel since May 2018.
- **16 of 21** communities reported having main fuel supply routes severed.
- **3 of 21** communities reported having no transport fuel available to purchase.
- **2 of 21** communities reported having no cooking fuel available to purchase.

## FOOD SECURITY

- **10%** increase in the median price of assessed food items since May 2018.
- **14 of 21** communities reported having main food supply routes severed.
- **13 of 21** communities reported some assessed food commodities as unavailable to purchase.
- **0 of 21** communities reported that people are not able to purchase food.
- **19 of 21** communities reported that people are not receiving food distributions.

## HYGIENE AND SHELTER

- **8%** increase in the median price of assessed hygiene items since May 2018.
- **8 of 21** communities reported having main hygiene and shelter commodity supply routes severed.
- **20 of 21** communities reported some hygiene and shelter commodities are unavailable to purchase.
- **0 of 21** communities reported that people are not able to purchase hygiene and shelter commodities.
- **19 of 21** communities reported that people are not obtaining hygiene and shelter commodities through distributions.

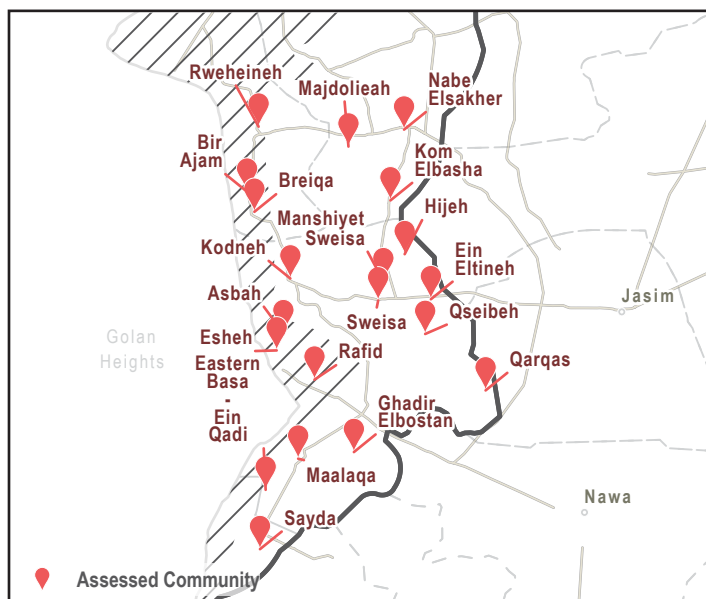
### Top 5 most commonly reported difficulties for vendors

1. Supplier not selling	21/21
2. Insecure supply routes	19/21
3. Supply limited	19/21
4. Supplier empty	16/21
5. Vendor liquidity shortage	3/21

### Top 5 most commonly reported difficulties for consumers

1. Consumer liquidity shortage	21/21
2. Limited supply	17/21
3. Vendor supply empty	9/21
4. Insecure route to market	2/21
5. Insecure market	1/21

## ASSESSED COMMUNITIES IN QUNEITRA



## WATER TRUCKING

- **61%** increase in the median price water trucking since May 2018.
- **3 of 21** communities reported having no access to water trucking.
- **8 of 18** communities with water trucking reported unchlorinated water.

## COMMUNICATIONS

- **0%** change in the median price of cellphone data since May 2018.
- **4 of 21** communities reported having no cellphone data available for purchase.

## FUEL ITEMS

- **188%** increase in the median price of cooking fuel since May 2018.
- **422%** increase in the median price of transport fuel since May 2018.
- **6 of 8** communities reported having main fuel supply routes severed.
- **4 of 8** communities reported having no transport fuel available to purchase.
- **5 of 8** communities reported having no cooking fuel available to purchase.

## FOOD SECURITY

- **48%** increase in the median price of assessed food items since May 2018.
- **4 of 8** communities reported having main food supply routes severed.
- **8 of 8** communities reported some assessed food commodities as unavailable to purchase.
- **0 of 8** communities reported that people are not able to purchase food.
- **3 of 8** communities reported that people are not receiving food distributions.

## HYGIENE AND SHELTER

- **39%** increase in the median price of assessed hygiene items since May 2018.
- **3 of 8** communities reported having main hygiene and shelter commodity supply routes severed.
- **8 of 8** communities reported some hygiene and shelter commodities are unavailable to purchase.
- **0 of 8** communities reported that people are not able to purchase hygiene and shelter commodities.
- **1 of 8** communities reported that people are not obtaining hygiene and shelter commodities through distributions.

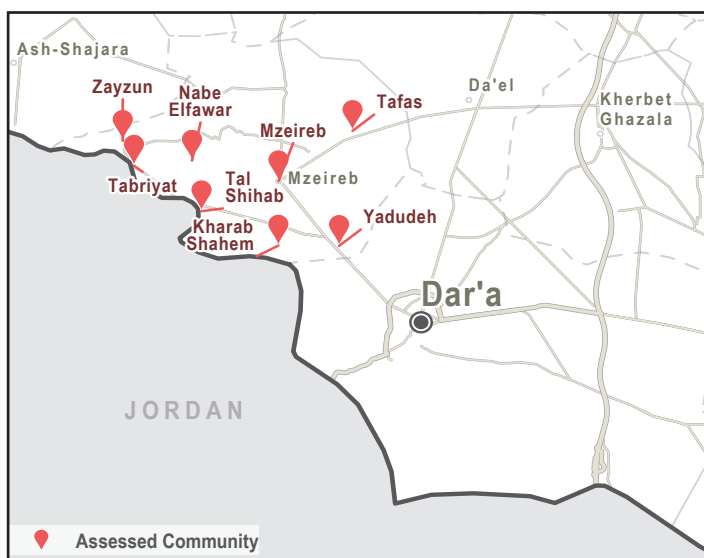
### Top 5 most commonly reported difficulties for vendors

1. Insecure supply route	<div style="width: 62.5%;"></div>	5/8
2. Inflation	<div style="width: 50%;"></div>	4/8
3. Supply limited	<div style="width: 50%;"></div>	4/8
4. Supplier empty	<div style="width: 50%;"></div>	4/8
5. Liquidity	<div style="width: 37.5%;"></div>	3/8

### Top 5 most commonly reported difficulties for consumers

1. Consumer liquidity shortage	<div style="width: 87.5%;"></div>	7/8
2. Insecure route to market	<div style="width: 62.5%;"></div>	5/8
3. Insecure market place	<div style="width: 50%;"></div>	4/8
4. Limited or no supply	<div style="width: 50%;"></div>	4/8
5. Closed shops	<div style="width: 37.5%;"></div>	3/8

## ASSESSED COMMUNITIES IN MZEIREB

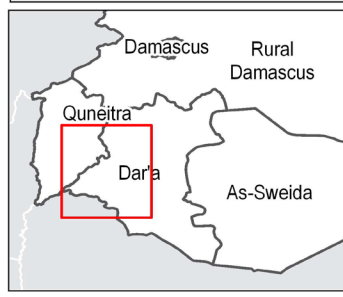
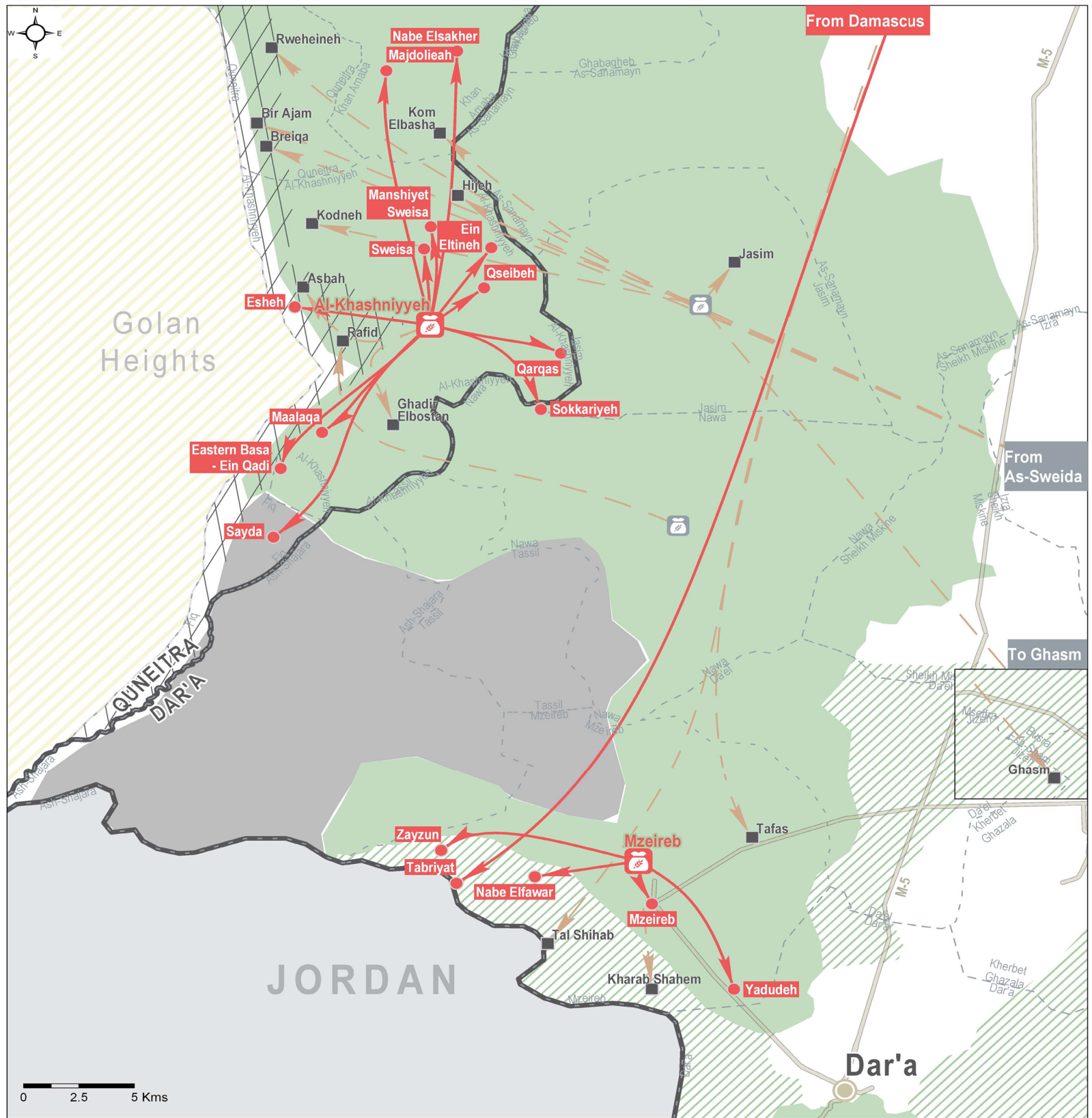


## WATER TRUCKING

- **138%** increase in the median price water trucking since May 2018.
- **1 of 8** communities reported having no access to water trucking.
- **0 of 7** communities with water trucking reported unchlorinated water.

## COMMUNICATIONS

- **40%** increase in the median price of cellphone data since May 2018.
- **6 of 8** communities reported having no cellphone data available for purchase.



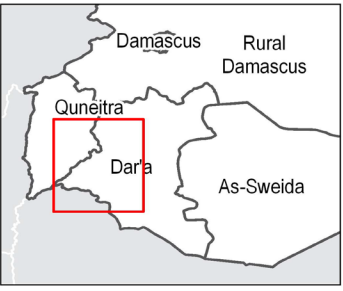
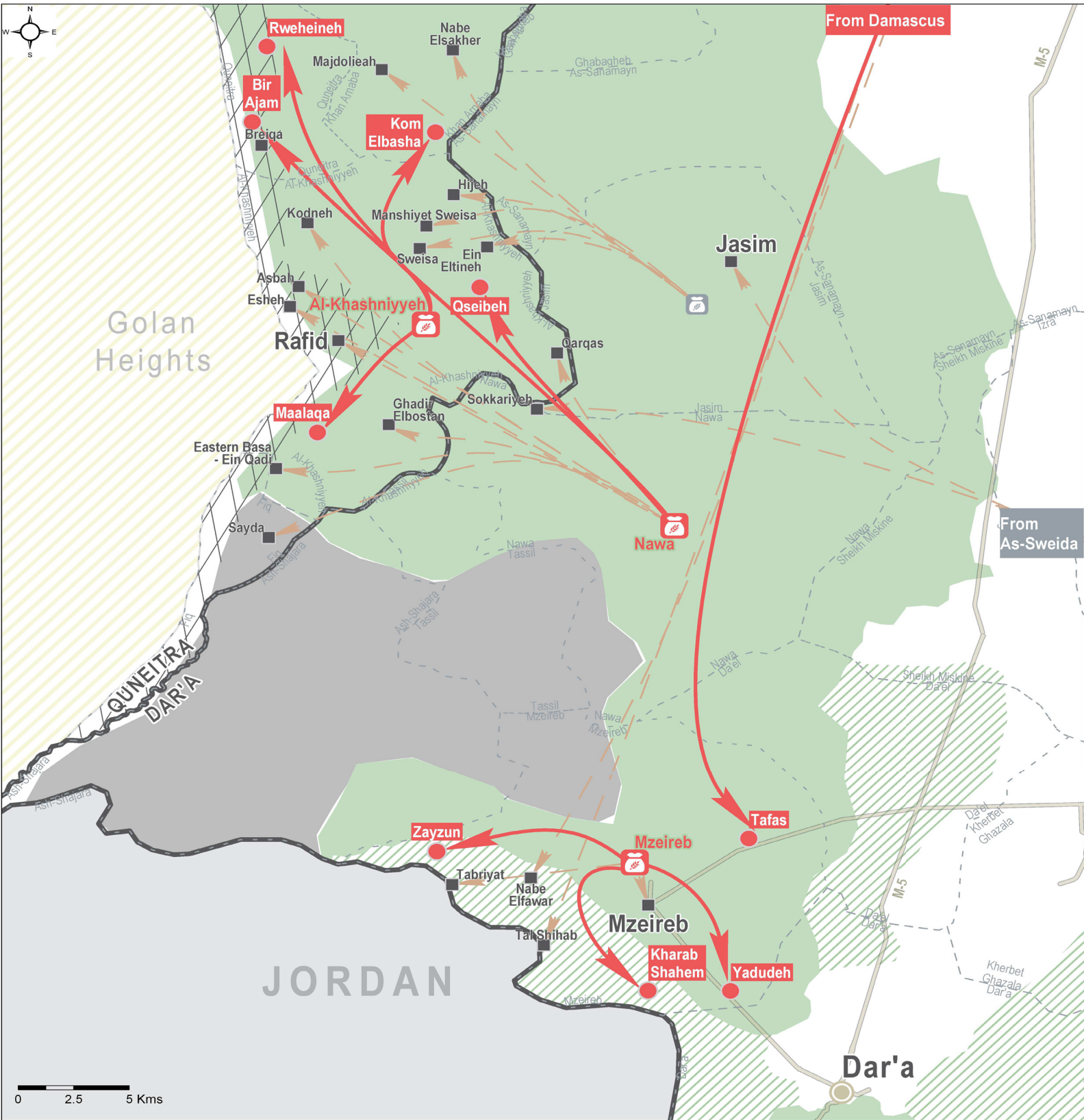
**NFI Supply Line Status as of 02 July 2018**

- Assessed community with current NFI supply line
- Assessed community with severed NFI supply line
- Sub-district (centroid) providing 1+ NFI supply lines
- Sub-district (centroid) previously providing NFI supply line
- Current NFI supply line
- Severed NFI supply line

**Area of Influence**

- ISIL-affiliated groups 09 July 2018
- Opposition Groups 09 July 2018
- Opposition Groups 17 June 2018
- Golan Heights
- UNDOF Occupied Zones

Note: Data, designations and boundaries contained on this map are not warranted to be error-free and do not imply acceptance by the REACH partners, associates or donors mentioned on this map.



### Food Supply Line Status as of 02 July 2018

- Assessed community with current food supply line
- Assessed community with severed food supply line
- Sub-district (centroid) providing 1+ food supply lines
- Sub-district (centroid) previously providing food supply line
- Current food supply line
- Severed food supply line

### Area of Influence

- ISIL-affiliated groups 09 July 2018
- Opposition Groups 09 July 2018
- Opposition Groups 17 June 2018
- Golan Heights
- UNDOF Occupied Zones

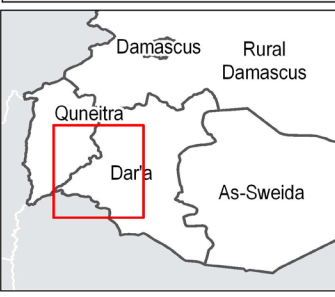
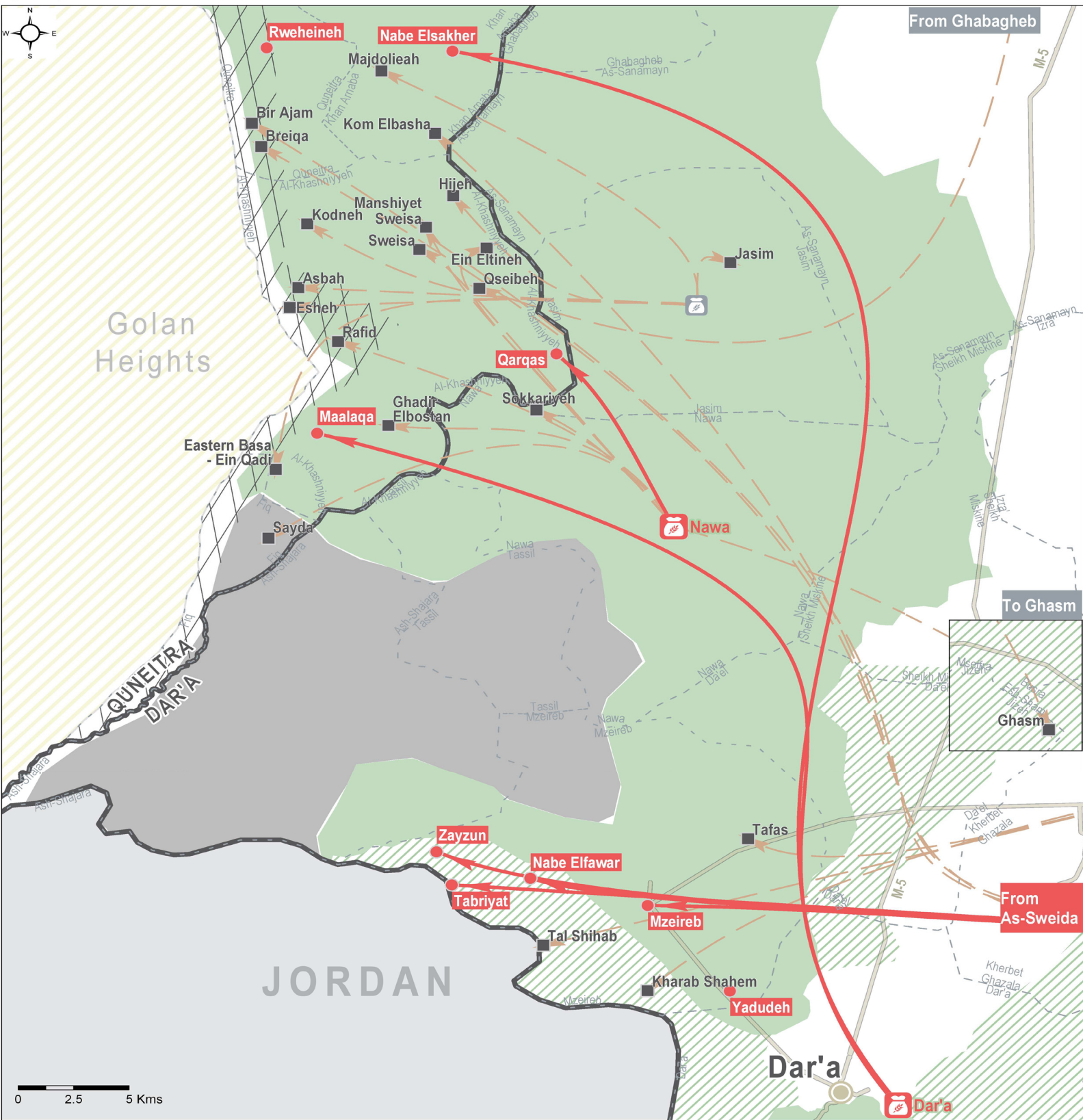
Note: Data, designations and boundaries contained on this map are not warranted to be error-free and do not imply acceptance by the REACH partners, associates or donors mentioned on this map.



# SYRIA - South

## Fuel (Cooking & Transport) Supply Line

For humanitarian purposes only  
Production date : 09 July 2018



### Fuel Supply Line Status as of 02 July 2018

- Assessed community with current fuel supply line
- Assessed community with severed fuel supply line
- Sub-district (centroid) providing 1+ NFI supply lines
- Sub-district (centroid) previously providing fuel supply line
- Current fuel supply line
- - - Severed fuel supply line

### Area of Influence

- ISIL-affiliated groups 09 July 2018
- Opposition Groups 09 July 2018
- Opposition Groups 17 June 2018
- Golan Heights
- UNDOF Occupied Zones

Note: Data, designations and boundaries contained on this map are not warranted to be error-free and do not imply acceptance by the REACH partners, associates or donors mentioned on this map.

# PRICES, AVAILABILITY AND PERCENTAGE CHANGE SINCE MAY 2018, BY COMMUNITY (SYRIAN POUNDS)

MZEIREB

QUNEITRA

JASIM & NAWA

Community	Bread (8 loaves) (Syrian Pound)		Bulgur (1 kg) (Syrian Pound)		Rice (1 kg) (Syrian Pound)		Red Lentil (1 kg) (Syrian Pound)		Cucumber (1 kg) (Syrian Pound)		Tomato (1 kg) (Syrian Pound)		Chicken (1 kg) (Syrian Pound)		Onions (1 kg) (Syrian Pound)		Potatoes (1 kg) (Syrian Pound)	
Southwest Syria	110	-1%	200	-20%	600	+9%	300	+28%	175	-30%	137.5	-8%	150	+50%	117.5	+18%	800	0%
Yadudeh	450	NA	400	NA	900	NA	350	NA	NA	NA	NA	NA	NA	NA	NA	NA	NA	NA
Tal Shihab	NA	NA	NA	NA	600	+9%	NA	NA	350	+56%	200	+33%	800	+14%	200	+100%	150	+50%
Tafas	500	+233%	400	67%	900	+80%	400	60%	NA	NA	NA	NA	NA	NA	NA	NA	NA	NA
Tabriyat	NA	NA	NA	NA	650	+8%	NA	NA	250	-9%	200	+45%	800	+47%	200	+100%	150	+50%
Zayzun	500	+525%	500	NA	900	+64%	500	144%	75	-73%	100	-33%	NA	NA	125	0%	150	+50%
Mzeireb	400	+233%	400	+60%	900	+80%	400	60%	75	-79%	150	0%	NA	NA	100	0%	100	-20%
Kharab Shahem	500	+276%	500	+150%	700	+17%	500	186%	80	-71%	75	+46%	NA	NA	100	0%	100	0%
Nabe Elfawar	NA	NA	NA	NA	650	+18%	NA	NA	300	+9%	200	+33%	800	+47%	200	+100%	250	+150%
Rweheineh	120	+79%	200	-22%	600	+14%	NA	NA	150	-40%	150	+9%	NA	NA	125	43%	125	+43%
Bir Ajam	120	-4%	200	-20%	600	+20%	NA	NA	150	-25%	150	+50%	900	+24%	125	+25%	125	+67%
Breiqa	200	+100%	400	+100%	800	+45%	800	+100%	150	-39%	150	-32%	850	0%	100	+33%	85	+3%
Kom Elbasha	100	NA	200	NA	600	NA	NA	NA	150	NA	150	NA	800	NA	125	NA	125	NA
Nabe Elsakher	100	0%	200	0%	600	0%	250	+25%	175	+8%	150	+5%	800	+7%	120	+20%	110	+38%
Asbah	100	NA	200	NA	600	NA	250	NA	175	NA	150	NA	800	NA	150	NA	110	NA
Ein Eltineh	100	NA	200	NA	600	NA	300	NA	175	NA	125	NA	800	NA	150	NA	150	NA
Qseibeh	100	-20%	200	-23%	600	+9%	NA	NA	150	-45%	150	0%	800	+3%	125	+25%	125	+25%
Sweisa	100	NA	200	NA	600	NA	300	NA	200	NA	125	NA	800	NA	150	NA	110	NA
Esheh	100	NA	200	NA	600	NA	250	NA	175	NA	150	NA	800	NA	150	NA	110	NA
Ghadir Elbostan	125	NA	200	NA	600	NA	300	NA	175	NA	125	NA	800	NA	150	NA	110	NA
E. Basa - Ein Qadi	100	NA	250	NA	600	NA	275	NA	175	NA	125	NA	800	NA	150	NA	125	NA
Hijeh	100	-10%	200	-26%	600	+9%	300	+25%	175	0%	125	-29%	800	0%	150	+50%	125	+25%
Rafid	160	+82%	200	-20%	600	+20%	300	+33%	200	-20%	125	-17%	800	2%	150	+50%	110	+22%
Maalaqa	160	NA	200	NA	600	NA	NA	NA	150	NA	150	NA	800	NA	125	NA	110	NA
Kodneh	100	-38%	200	-26%	600	+9%	250	+6%	175	-30%	150	0%	800	+5%	150	+50%	110	+10%
Qarqas	100	NA	200	NA	600	NA	250	NA	200	NA	125	NA	825	NA	150	NA	130	NA
Manshiyet Sweisa	100	NA	200	NA	600	NA	300	NA	150	NA	125	NA	800	NA	150	NA	125	NA
Sayda	160	-9%	250	11%	600	+9%	300	+33%	175	-36%	125	-38%	800	-3%	150	+20%	130	+30%
Razaniyet Saida	100	NA	250	NA	600	NA	300	NA	150	NA	125	NA	800	NA	150	NA	110	NA
Majdolieah	100	NA	200	NA	650	NA	250	NA	150	NA	150	NA	800	NA	125	NA	110	NA
Ghasm	NA	NA	400	+208%	900	+80%	500	NA	200	-43%	100	-33%	900	+50%	125	+25%	150	+100%
Jasim	200	+100%	200	0%	800	+45%	400	0%	100	-60%	100	-58%	700	-16%	100	+33%	100	+18%
Sokkariyeh	200	NA	200	NA	800	NA	400	NA	100	NA	100	NA	750	NA	100	NA	85	NA

NA - not available

# PRICES, AVAILABILITY AND PERCENTAGE CHANGE SINCE MAY 2018, BY COMMUNITY (SYRIAN POUNDS)

MZEIREB

QUNEITRA

JASIM & NAWA

Community	Eggs (30 Eggs) (Syrian Pound)		Ghee (1 kg) (Syrian Pound)		Cooking Oil (1 L) (Syrian Pound)		Baby For- mula (1 kg) (Syrian Pound)		Tarpaulin (1 m <sup>2</sup> ) (Syrian Pound)		Tent (5 persons) (Syrian Pound)		Bar Soap (1 bar) (Syrian Pound)		Jerry Cans (20 L) (Syrian Pound)		Sanitary Pads (1 kg) (Syrian Pound)	
Southwest Syria	1500	+36%	1250	+25%	750	+15%	3500	NA	6000	NA	150000	NA	75	0%	800	NA	400	+28%
Yadudeh	1500	NA	1500	NA	1000	NA	NA	NA	NA	NA	NA	NA	100	NA	NA	NA	350	NA
Tal Shihab	1200	+4%	1500	+25%	800	+14%	NA	NA	NA	NA	NA	NA	100	+33%	650	NA	450	+80%
Tafas	1500	+50%	1500	+50%	850	+42%	8000	NA	NA	NA	NA	NA	100	+43%	800	NA	350	+12%
Tabriyat	1200	+4%	1500	+50%	800	+23%	NA	NA	NA	NA	NA	NA	100	0%	700	NA	450	+100%
Zayzun	1900	+58%	2000	+100%	1000	+54%	NA	NA	NA	NA	NA	NA	150	+100%	NA	NA	400	+60%
Mzeireb	1500	+25%	1850	+85%	800	+33%	9000	NA	NA	NA	NA	NA	100	+33%	1100	NA	400	+60%
Kharab Shahem	1500	+43%	1800	+38%	1000	+60%	NA	NA	NA	NA	NA	NA	150	+100%	NA	NA	400	+28%
Nabe Elfawar	1200	0%	1500	+50%	800	+3%	NA	NA	NA	NA	NA	NA	100	+33%	800	NA	450	+64%
Rweheineh	1100	-8%	1100	+24%	700	+12%	NA	NA	NA	NA	NA	NA	75	+15%	NA	NA	344	+10%
Bir Ajam	1200	33%	1200	+26%	700	+8%	NA	NA	NA	NA	NA	NA	75	+15%	1500	NA	344	+10%
Breiqa	1100	+13%	1000	-13%	700	0%	NA	NA	6000	NA	150000	NA	100	+33%	800	NA	450	+29%
Kom Elbasha	1100	NA	1000	NA	700	NA	3500	NA	NA	NA	NA	NA	75	NA	NA	NA	344	NA
Nabe Elsakher	1700	+70%	1200	+12%	750	+15%	3500	NA	NA	NA	NA	NA	75	0%	NA	NA	400	+23%
Asbah	1500	NA	1300	NA	750	NA	3500	NA	NA	NA	NA	NA	75	NA	NA	NA	400	NA
Ein Eltineh	1700	NA	1300	NA	750	NA	3500	NA	NA	NA	NA	NA	75	NA	NA	NA	400	NA
Qseibeh	1200	+9%	1000	0%	700	+17%	3500	NA	NA	NA	NA	NA	75	0%	1500	NA	344	0%
Sweisa	1500	NA	1250	NA	750	NA	3500	NA	NA	NA	NA	NA	75	NA	NA	NA	400	NA
Esheh	1500	NA	1300	NA	750	NA	3500	NA	NA	NA	NA	NA	75	NA	NA	NA	400	NA
Ghadir Elbostan	1500	NA	1250	NA	750	NA	3500	NA	NA	NA	NA	NA	75	NA	NA	NA	400	NA
E. Basa - Ein Qadi	1500	NA	1200	NA	750	NA	3000	NA	NA	NA	NA	NA	75	NA	NA	NA	400	NA
Hijeh	1700	+42%	1250	+25%	750	+15%	NA	NA	NA	NA	NA	NA	75	+15%	NA	NA	375	+9%
Rafid	1500	+25%	1250	+25%	750	20%	3500	NA	NA	NA	NA	NA	75	0%	1300	NA	400	+16%
Maalaqa	1100	NA	1100	NA	700	NA	3000	NA	NA	NA	NA	NA	75	NA	NA	NA	344	NA
Kodneh	1500	+25%	1250	+25%	750	+15%	3500	NA	NA	NA	NA	NA	75	+15%	NA	NA	400	+7%
Qarqas	150	NA	1300	NA	750	NA	3500	NA	NA	NA	NA	NA	75	NA	NA	NA	400	NA
Manshiyet Sweisa	1500	NA	1200	NA	750	NA	3500	NA	NA	NA	NA	NA	75	NA	NA	NA	400	NA
Sayda	1500	+50%	1250	+25%	750	+15%	3200	NA	NA	NA	NA	NA	75	+15%	NA	NA	400	+28%
Razaniyet Saida	1500	NA	1200	NA	750	NA	3200	NA	NA	NA	NA	NA	75	NA	NA	NA	400	NA
Majdolieah	1600	NA	1200	NA	750	NA	NA	NA	NA	NA	NA	NA	75	NA	NA	NA	400	NA
Ghasm	1000	-13%	1500	+50%	1000	+43%	NA	NA	NA	NA	NA	NA	100	-20%	NA	NA	400	-20%
Jasim	1000	+11%	1100	+16%	700	0%	3500	NA	6000	NA	150000	NA	75	0%	700	NA	350	-22%
Sokkariyeh	950	NA	1100	NA	700	NA	NA	NA	7000	NA	150000	NA	75	NA	800	NA	350	NA

NA - not available

# PRICES, AVAILABILITY AND PERCENTAGE CHANGE SINCE MAY 2018, BY COMMUNITY (SYRIAN POUNDS)

	Community	Cellphone Data (1 GB) (Syrian Pound)	Diesel (1 L) (Syrian Pound)	Petrol (1 L) (Syrian Pound)	LP Gas (1 L) (Syrian Pound)	Water Trucking (1 L) (Syrian Pound)	Food route Severed	NFI route Severed	Fuel route Severed
MZEIREB	Southwest Syria	2,000 +33%	650 +110%	1300 +271%	400 +51%	0.82 +64%			
	Yadudeh	NA NA	1000 NA	2000 NA	800 NA	NA NA	no	yes	yes
	Tal Shihab	NA NA	NA NA	NA NA	NA NA	1 +150%	no	no	no
	Tafas	2000 +33%	850 +188%	2000 +515%	725 +174%	NA NA	yes	no	no
	Tabriyat	NA NA	NA NA	NA NA	NA NA	1.33 NA	yes	no	no
	Zayzun	NA NA	NA NA	NA NA	NA NA	NA NA	yes	yes	yes
	Mzeireb	1500 +50%	1200 +300%	2400 +586%	750 +188%	NA NA	yes	no	no
	Kharab Shahem	NA NA	1200 +307%	2500 +687%	NA NA	0.9 NA	no	no	no
	Nabe Elfawar	NA NA	NA NA	NA NA	NA NA	0.83 +118%	no	yes	yes
	Rweheineh	2200 +47%	600 +97%	1000 186%	375 +42%	0.98 +118%	yes	yes	yes
QUNEITRA	Bir Ajam	2000 +33%	650 NA	1200 NA	400 +45%	1.2 +71%	yes	no	yes
	Breiqa	600 -73%	800 +150%	1300 +271%	550 +108%	0.73 +43%	no	no	yes
	Kom Elbasha	2000 NA	600 NA	1200 NA	375 NA	0.98 NA	yes	no	no
	Nabe Elsakher	1700 -24%	650 +97%	1250 +245%	400 +48%	0.91 +102%	yes	yes	yes
	Asbah	2000 NA	650 NA	1300 NA	400 NA	0.82 NA	yes	no	yes
	Ein Eltineh	1500 NA	600 NA	1300 NA	400 NA	0.73 NA	yes	no	no
	Qseibeh	2000 0%	650 +108%	1100 +233%	390 +49%	1.09 +83%	no	no	yes
	Sweisa	2000 NA	600 NA	1300 NA	400 NA	0.82 NA	yes	no	yes
	Esheh	1536 NA	NA NA	NA NA	NA NA	0.82 NA	yes	yes	yes
	Ghadir Elbostan	2000 NA	650 NA	1300 NA	400 NA	0.82 NA	yes	yes	yes
	E. Basa - Ein Qadi	2000 NA	650 NA	1300 NA	400 NA	0.82 NA	yes	yes	yes
	Hijeh	2000 +33%	NA NA	NA NA	NA NA	0.73 +22%	yes	yes	yes
	Rafid	2000 0%	650 +106%	1300 +271%	400 +45%	0.82 +58%	yes	no	no
	Maalaqa	2300 NA	650 NA	1300 NA	400 NA	0.87 NA	no	no	yes
	Kodneh	2000 0%	650 +117%	1300 +271%	400 +49%	0.82 +44%	no	no	yes
	Qarqas	1500 NA	650 NA	1350 NA	400 NA	0.78 NA	no	yes	yes
	Manshiyet Sweisa	2000 NA	600 NA	1300 NA	400 NA	0.73 NA	yes	no	yes
	Sayda	2000 +33%	600 +85%	1300 +271%	400 +45%	0.73 +103%	yes	no	yes
Razaniyet Saida	2000 NA	600 NA	1300 NA	400 NA	0.82 NA	yes	yes	no	
Majdolieah	2000 NA	650 NA	1300 NA	400 NA	0.82 NA	yes	yes	yes	
JASIM & NAWA	Ghasm	2560 +28%	NA NA	NA NA	NA NA	1 +37%	yes	yes	yes
	Jasim	500 -67%	1300 +306%	1300 +300%	550 +120%	0.51 +28%	yes	yes	yes
	Sokkariyeh	400 NA	800 NA	1200 NA	500 NA	0.45 NA	yes	no	yes

NA - not available

## METHODOLOGY

To be included in the southwest Syria Rapid Market Monitoring Exercise, markets must be permanent in nature, large enough to support at least two wholesalers, and diverse enough to provide a sufficient variety of goods and commodities. The shops surveyed within each market must be housed in permanent structures and must sell certain items to be eligible for inclusion. 23 commodities are surveyed in the categories of food, hygiene and shelter, data and fuel. These items include some of the 32 items covered in REACH market monitoring exercises, including SMEB (Survival Minimum Expenditure Basket) commodities. However, this rapid market monitoring assesses key basic commodities including shelter items, which are not covered in the market monitoring exercises.

Participating organisations train their Key Informant (KI) on the Rapid Market Monitoring methodology and data collection tools using standard training materials developed by REACH. In each community, data collection is conducted remotely through KIs such as previous enumerators, shop owners, suppliers and consumers, KIs provide an estimate of the lowest price of the requested items in the community, generalised observations of major supply routes, general observations of how community members obtain goods and how businesses are managing in the current conflict context.

A survey form is deployed on KoBo to capture price and availability from different types of establishments, including grocery stores, fuel traders, currency exchange shops, water trucking services and cellphone phone shops, among others. Nearly all participating partners submit their data to these KoBo forms, using the KoBoCollect android app to upload data. A small number of partners, by prior permission, collect data using fully harmonised data collection tools deployed on other platforms, then submit their raw data to REACH for standardisation, compilation and cleaning.

The cleaned data is then analysed by medians and count of each commodity availability and price. These trends are observed at the sub-district level and, when possible, at the community-level. The median price at community level is taken for each commodity and a category (food, hygiene and shelter, data and fuel) median and count is taken from the communities. This is aggregated up to sub-district level by using the medians for each community. However, this does show some sub-districts to have a median value for each category, when the communities within that sub-district do not, as the commodity may not be available in the community.

Maps are created to help CBR–TWG members understand the distribution of prices. To illustrate local variations in prices and availability, REACH uses the collected data to map price and availability of commodities in each sub-district and adds illustrations of surrounding border crossings, with data sourced from OCHA. The cleaned data sets are available on the REACH Resource Centre and are distributed to all participating partners, as well as to interested clusters and the broader humanitarian community.

## CHALLENGES AND LIMITATIONS

As the southwest Syria Rapid Market Monitoring Exercise currently assesses communities during the southern offensive. Due to the changing safety and security situation coverage may vary so achieving a consistent approach is inherently challenging. Participating organisations are therefore requested to adopt harmonised data collection methodologies and tools to ensure that the data uploaded is as accurate as possible. Confirming commodity shortages in certain communities was difficult due to a lack of information about general market availability. As this exercise collects data directly from KIs for its coverage, the exercise may lose coverage sporadically or for longer periods of time owing to challenges in accessing locations or due to loss in the shared data collection capacity of the project. This impacts the ability to report on trends, as can be seen in the 'NA' values in the tables.

### CALCULATING PRICE CHANGES SINCE MAY 2018

The Rapid Market Monitoring for southwest Syria compares the prices of assessed in the current round to the prices of comparable commodities observed in the May 2018 Market Monitoring Exercise. This was done because May 2018 was the last month in which a SMEB value for southern Syria was collected in a normal fashion. Price changes, although not exact given the differences in data collection methodology, is meant to provide a indication to cash actors by how much prices may have increased since May 2018

### WHAT IS THE CASH-BASED RESPONSES TECHNICAL WORKING GROUP?

The Cash-Based Responses Technical Working Group (CBR–TWG) was established in May 2014 to analyse the impact of the ongoing conflict on markets in Syria and guide the implementation of humanitarian cash and voucher programmes within those markets. REACH and the CBR–TWG have been partners on the Syria Market Monitoring Exercise since early 2015. Since February 2017, the exercise expanded coverage into the south, bringing monthly market assessments to communities in Damascus, Rural Damascus, Dar'a and Quneitra governorates.

### ABOUT REACH

REACH is a joint initiative of two international non-governmental organizations — ACTED and IMPACT Initiatives — and the UN Operational Satellite Applications Programme (UNOSAT). REACH facilitates the development of information tools and products that enhance the capacity of aid actors to make evidence-based decisions in emergency, recovery and development contexts. By doing so, REACH contributes to ensuring that communities affected by emergencies receive the support they need. All REACH activities are conducted in support to and within the framework of inter-agency aid coordination mechanisms. For more information, please visit our website at [www.reach-initiative.org](http://www.reach-initiative.org), contact us directly at [geneva@reach-initiative.org](mailto:geneva@reach-initiative.org) or follow us on Twitter at [@REACH\\_info](https://twitter.com/REACH_info).