



Camp Profile: Al Kawthar Camp

Kerbala governorate, Iraq
August 2018

Management agency: Kerbala governorate

Summary

This profile provides an overview of conditions in Al Kawthar Camp. Primary data was collected through 49 randomly sampled household surveys between 2 July and 7 August 2018. Findings are statistically representative at the camp level with a 90% confidence level and 10% margin of error, with target sample sizes based on population figures provided by camp managers.¹ Additional information from camp managers has been used to support findings.

Camp Overview

Number of individuals: 653²

Number of households: 135²

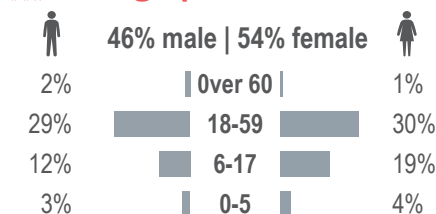
Date opened: 3/23/2015

Main shelter type: Caravan

Planned capacity: 1,177

Camp area: 422,432m²

Demographics

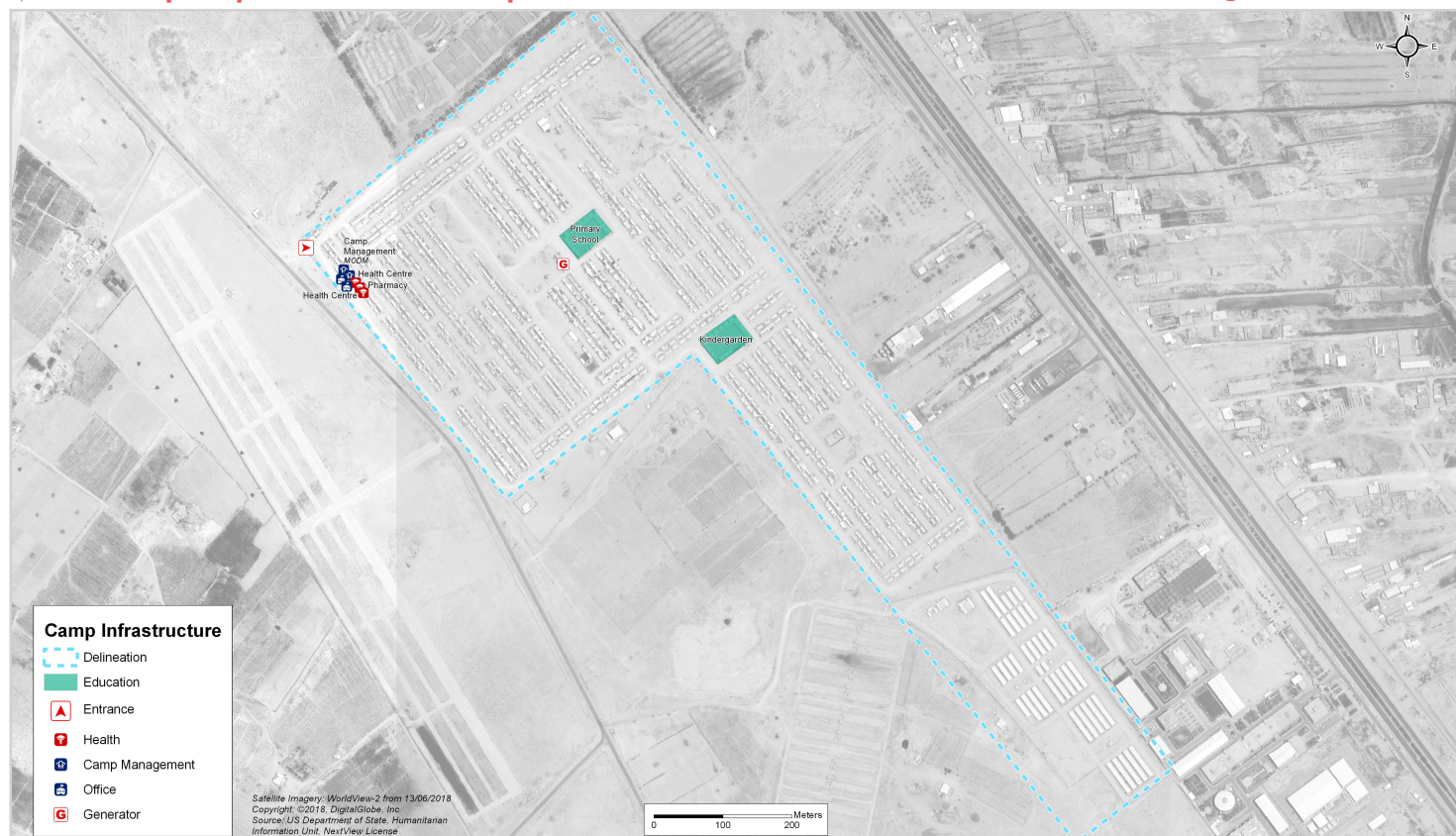


Location Map



IDP Camp Map - Al Kawthar Camp

Lat. 32° 32' 11.0004" N Long. 44° 6' 6.0012" E



Sectoral Minimum Standards

		Target	Previous Round	Current Round	
Education	% of children aged 6-11 attending formal school	100%	85%	97%	●
	% of children aged 12-17 attending formal school	100%	51%	90%	●
Food	% of households accessing Public Distribution Systems (PDS) in the month prior to data collection ³	100%	86%	100%	●
Health	Health services are available on-site or within walking distance (less than 5km)	Yes	Yes	Yes	●
CCCM	Average open area per household	min. 30m ²	782m ²	2,926m ²	●
Protection	% of households reported having at least one member with lost, damaged or expired documentation	0%	0%	0%	●
Shelter	Average covered area per person	min 3.5m ²	3.7m ²	3.8m ²	●
	Average number of individuals per shelter	max 5	6	4	●
WASH	# of persons per latrine	max. 20	5	5	●
	# of persons per shower	max. 20	5	5	●
	Frequency of solid waste disposal at least weekly	min. weekly	Yes	Yes	●

Targets based on minimum standards agreed with the CCCM Cluster, Iraq. Findings based on household-level data, enumerator field observations, and camp management documentation.

● Minimum standard reached, ● 50-99% of minimum standard reached, ● Less than 50% of minimum standard reached or not at all.

¹Findings of a subset of the population may have a wider margin of error, with anything below a minimum confidence level of 90% and a margin of error of 10% considered indicative.

²Camp population and household figures from CCCM camp managers at time of data collection. The camp population as of September 2018 is 131 households and 787 individuals according to national CCCM cluster figures.

³PDS rations do not necessarily include the full basket provided by the WFP Family Food Parcel or equivalent.



CCCM CLUSTER
SUPPORTING DISPLACED COMMUNITIES

REACH
Informing more effective humanitarian action



Camp Profile: Al Kawthar Camp



Protection and Intentions

Vulnerable Groups

Proportion of population identified as vulnerable:

- 5% Pregnant/lactating women
- 2% Individuals with disabilities
- 2% Chronically ill individuals
- 14% Female-headed households

Movement Intentions

51% of households listed rehabilitation of homes in their AoO as a priority need in order to return.

Freedom of Movement

100% reported being able to leave the camp temporarily (e.g. to go to the market for livelihood opportunities).



Information and Priority Needs

Top three information needs:^{*}

- Accessing humanitarian assistance 88%
- Finding job opportunities 66%
- Information about returns 59%

Top three reported priority needs:^{*}

- Food 76%
- Employment 57%
- Summer kits 49%



Shelter and NFIs

100% of households reported having no concerns with their shelter.

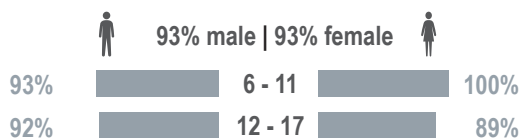
Of the 100% that reported NFI needs, the top three were:^{*4}

- Air water cooler 90%
- Clothing 51%
- Soft bedding items 41%



Education

Reported attendance rates of formal education by age and sex:



Of the 14% of households that reported their children **did not receive education** in the 30 days prior to data collection, the top three barriers included:^{*4}

- Child disabled
- Child stays at home to assist with household chores
- N/A

^{*}Respondents could select multiple needs or reasons. Therefore, results may exceed 100%.

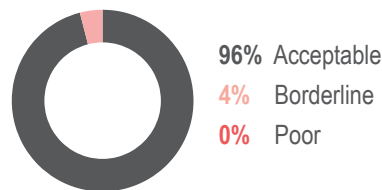
^{*4}Findings are based on a small subset of the sample population and are therefore considered indicative rather than statistically generalizable to all in-camp households.

^{*5}Food consumption score calculated according to United Nations World Food Programme most recent technical guidelines, as of February 2008.



Food Security and Livelihoods

Household Food Consumption Score (FCS)⁵



Food Consumption Coping Strategies

96% of households reported using some form of consumption-based coping strategy in the 30 days prior to data collection. The most common of which were:^{*}

- Spend savings 85%
- Change location 30%
- Sell assets 26%

Household Income and Expenditure

Median monthly household income: 600,000 IQD (503 USD)^{6,7}

Median monthly expenditure per household: 390,000 IQD (327 USD)⁶

46% of adults reported working in the 30 days prior to data collection.

Top three household income sources:^{*7}

- Employment 92%
- Social services 8%
- Retirement pension 2%

Top three monthly household expenditures:^{*}

- Food 66%
- NFIs 9%
- Transport 7%



WASH

Primary source of drinking water over the 7 days prior to data collection:^{*}

- Purchased from shop 100%

0% of households had access to public or communal latrines, and 100% had access to private latrines.^{*}

100% of households reported collection services as their main method of waste disposal.



Health

Of the 35% of households who required healthcare services in the three months prior to data collection, 53% reported facing barriers to access, with the top three barriers including:^{*4}

- No medicine in hospital
- High cost of healthcare
- Unqualified hospital staff

⁶Exchange rate of 1 USD: 1192.3 IQD, sourced from [xe.com](https://www.xe.com) at 7/2/2018.

⁷Income includes multiple sources such as employment, savings, selling assistance, and receiving assistance.

