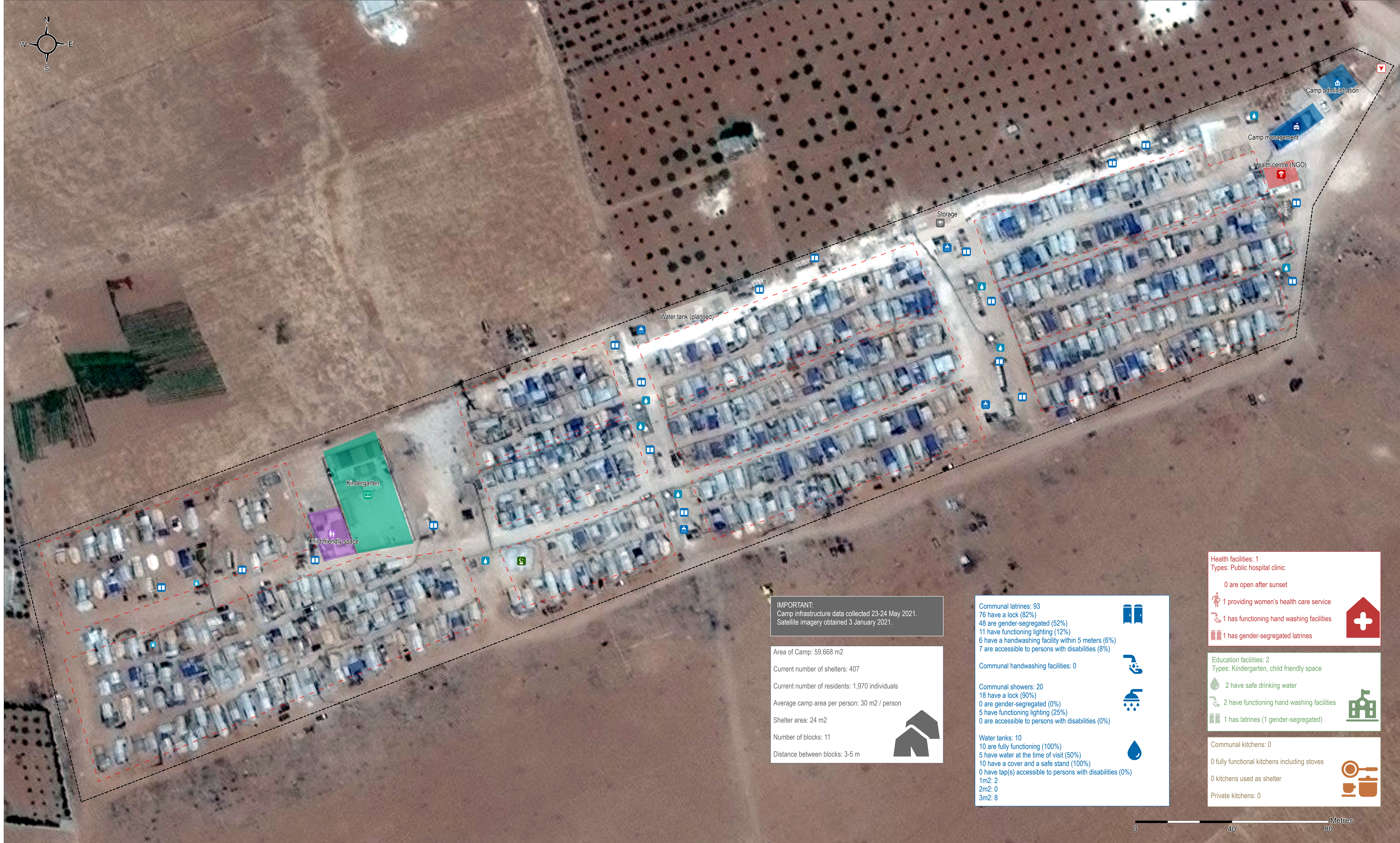


# SYRIA – Menbij East Old IDP Camp

## General Infrastructure – As of May 2021

For Humanitarian Purposes Only  
Production date : 27 July, 2021



**IMPORTANT:**  
Camp infrastructure data collected 23-24 May 2021.  
Satellite imagery obtained 3 January 2021.

Area of Camp: 59,668 m<sup>2</sup>  
Current number of shelters: 407  
Current number of residents: 1,970 individuals  
Average camp area per person: 30 m<sup>2</sup> / person  
Shelter area: 24 m<sup>2</sup>  
Number of blocks: 11  
Distance between blocks: 3-5 m

**Communal latrines:** 93  
76 have a lock (82%)  
48 are gender-segregated (52%)  
11 have functioning lighting (12%)  
6 have a handwashing facility within 5 meters (6%)  
7 are accessible to persons with disabilities (8%)

**Communal handwashing facilities:** 0

**Communal showers:** 20  
18 have a lock (90%)  
0 are gender-segregated (0%)  
5 have functioning lighting (25%)  
0 are accessible to persons with disabilities (0%)

**Water tanks:** 10  
10 are fully functioning (100%)  
5 have water at the time of visit (50%)  
10 have a cover and a safe stand (100%)  
0 have tap(s) accessible to persons with disabilities (0%)  
1m<sup>2</sup>: 2  
2m<sup>2</sup>: 0  
3m<sup>2</sup>: 8

**Health facilities:** 1  
Types: Public hospital clinic

0 are open after sunset

1 providing women's health care service

1 has functioning hand washing facilities

1 has gender-segregated latrines

**Education facilities:** 2  
Types: Kindergarten, child friendly space

2 have safe drinking water

2 have functioning hand washing facilities

1 has latrines (1 gender-segregated)

**Communal kitchens:** 0

0 fully functional kitchens including stoves

0 kitchens used as shelter

Private kitchens: 0

- |   |   |  |
|---|---|--|
| <b>General infrastructure</b>   | <b>Sanitation infrastructure</b>  | <b>Water tank capacity</b>   |
| <ul style="list-style-type: none"> <li> Block</li> <li> Boundary</li> <li> Entrance</li> <li> Mosque</li> <li> Camp offices</li> <li> Community space</li> <li> Education</li> <li> Health centre</li> <li> Services</li> <li> Camp administration</li> <li> Camp management / NGO office</li> <li> Child-friendly space</li> <li> Health centre</li> <li> Kindergarten</li> <li> Storage</li> <li> Services</li> </ul> | <ul style="list-style-type: none"> <li> Latrine</li> <li> Shower</li> </ul> | <ul style="list-style-type: none"> <li> 1m<sup>3</sup></li> <li> 3m<sup>3</sup></li> </ul> |

Contact: [mena.reach@impact-initiatives.org](mailto:mena.reach@impact-initiatives.org)  
Projection: WGS 1984 UTM 37N  
Data Sources:  
Infrastructure: REACH  
Satellite imagery: WorldView-2 from 3 July 2021  
Copyright: © 2021 DigitalGlobe  
Source: US Department of State, Humanitarian Information Unit,  
NextView license.  
File name: REACH\_SYR\_Map\_Menbj\_East\_Old\_camp\_21June2021\_A0

Note: Data, designations and boundaries contained on this map are not warranted to be error-free and do not imply acceptance by the REACH partners, associated, donors mentioned on this map.