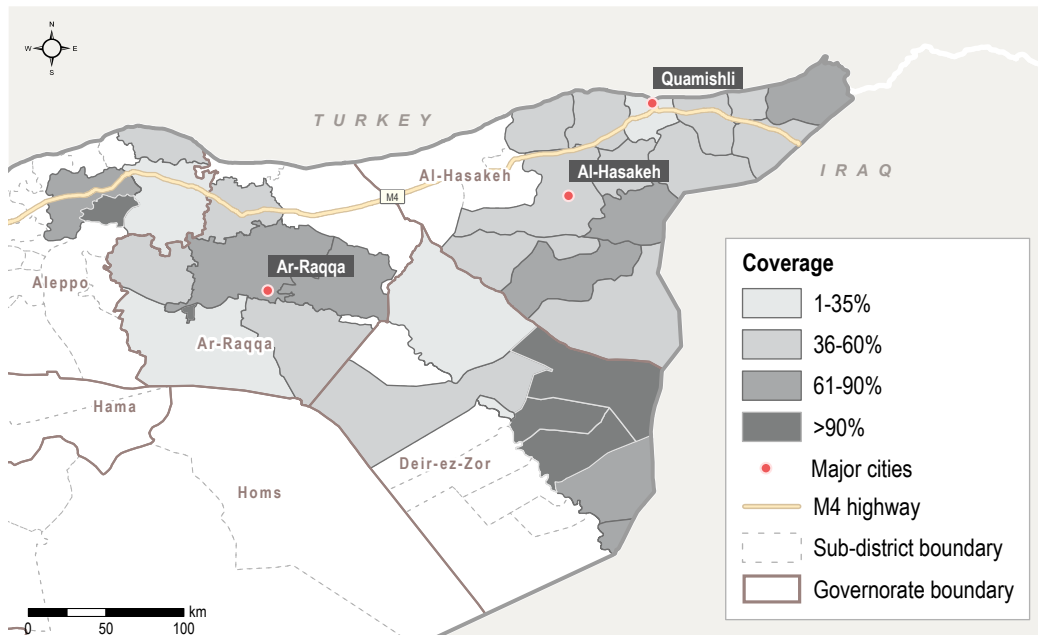


Introduction and Methodology

HSOS is a monthly assessment that provides comprehensive, multi-sectoral information about the humanitarian conditions and priority needs inside Syria. This factsheet presents a thematic review based on the HSOS assessment of the priority needs and humanitarian assistance, economic conditions, living conditions, access to basic services, COVID-19 situation, and the security and protection situation in Northeast Syria (NES). **Sector-specific indicator findings by location can be found on the [HSOS dashboard](#).**

The assessment is conducted using a key informant (KI) methodology at the community level. REACH enumerators are based inside Syria and interview three to five KIs per assessed location, either directly or remotely (via phone). KIs are chosen based on their community-level and sector-specific knowledge. This factsheet presents information gathered in **1,246 communities** across Aleppo¹ (225 communities), Ar-Raqqa (251 communities), Al-Hasakeh (685 communities), and Deir-ez-Zor (85 communities). **Data was collected between 1-22 December 2021** from **4,987 KIs** (19% female). Unless specified by an endnote, all indicators refer to the situation in the 30 days prior to data collection. Findings are indicative rather than representative, and should not be generalized across the population and region. Findings that are calculated based on a subset of the community are indicated by the following footnote ♦, with each subset specified in the endnotes.

The **complete monthly HSOS dataset** is available on the [REACH Resource Centre](#).



Key Highlights

In December, access to bread and other wheat products continued to deteriorate following low wheat harvests in the 2020/21 season. Deir-ez-Zor was particularly affected by higher bread prices with protests against this price increase being reported. Furthermore, access to fuel and medicinal products continued to decline.

- **Wheat production decreased by over 60% in 2021, causing wheat shortages and high wheat prices.**^a Reasons for these shortages include irregular rainfalls and heatwaves in the 2020/21 cropping season as well as high prices and low availability of agricultural inputs, notably fertilisers, irrigation water, and fuel.^{ab} Authorities in Northeast Syria raised prices of subsidised bread by 20% from 250 Syrian Pounds (SYP) to 300 SYP in early December.^{cd} This price increase led to protests in Deir-ez-Zor,^d where KIs in almost all assessed communities reported bread as a priority food need. The proportion of assessment communities where bread was reported as a priority food need was up from 74% for residents and 85% for internally displaced people (IDP) in November. However, cooking oil remained the priority food need according to KIs in 91% of assessed communities, followed by sugar (~80%), which saw prices at least double month-on-month in all governorates, according to REACH's market monitoring.

- **High fuel prices continued to impede access to electricity according to KIs in 55% of assessed communities.** This is a marked increase from 48% in November. The situation was reportedly worse in Deir-ez-Zor, where KIs in almost all communities noted the high fuel prices. The low availability of fuel has been an ongoing problem as the Northeast lacks refineries to process its crude oil.^e

- **COVID-19 restrictions eased as case numbers dropped; however, the healthcare system continued to struggle with a lack of medication.** KIs in 32% of assessed communities reported that livelihood sectors were affected by COVID compared to 56% in November. Education and access to markets were reportedly not affected by COVID. This coincides with a nationwide decline in case numbers.^f However, the lack of COVID tests and testing facilities has likely led to an underreporting of cases.^g More generally, there have been medical supply issues that have affected the ability of healthcare facilities to work.^h Accordingly, KIs in 52% of communities reported that a lack of medicines or medical equipment was a barrier to healthcare access, similar to November.

HSOS Dashboard

For a breakdown of sector-specific indicators by location, please see the [HSOS dashboard](#). The interactive HSOS dashboard provides a monthly sectoral overview of key indicators disaggregated at the sub-district and community level.



Priority Needs and Humanitarian Assistance



Most commonly reported **first, second, and third** and **overall** priority needs for residents (by % of assessed communities) ^{2,3}

	FIRST	SECOND	THIRD	OVERALL	
1	Livelihoods	Livelihoods	Livelihoods	Livelihoods	82%
2	Healthcare	Healthcare	Infrastructure	Healthcare	59%
3	WASH [▲]	WASH	Healthcare	WASH	42%

% of assessed communities where some of the resident households were able to access humanitarian assistance



Yes: 27%
No: 73%

% of assessed communities where KIs reported the presence of the following **types of assistance for residents** ⁴

- 1% | Livelihoods
- 1% | Healthcare
- 1% | WASH



Most commonly reported **first, second, and third** and **overall** priority needs for IDPs (by % of assessed communities) ^{2,3}

	FIRST	SECOND	THIRD	OVERALL	
1	Food	Livelihoods	Livelihoods	Livelihoods	79%
2	Livelihoods	Winterisation	Healthcare	Healthcare	54%
3	Healthcare	Healthcare	Winterisation	Food	52%

% of assessed communities where some of the IDP households were able to access humanitarian assistance



Yes: 39%
No: 61%

% of assessed communities where KIs reported the presence of the following **types of assistance for IDPs** ⁴

- 2% | Livelihoods
- 2% | Healthcare
- 34% | Food

Most commonly reported barriers that resident households faced in accessing humanitarian assistance (by % of assessed communities) ^{4, ♦}

In communities where access to humanitarian assistance was reported

In communities where no access to humanitarian assistance was reported

- Assistance provided was insufficient to cover all people in need **69%** **1** **92%**
- Quantity of assistance provided to households was insufficient **54%** **2** **4%**
- Assistance provided was not relevant to all needs **42%** **3** **2%**

- No humanitarian assistance was available
- Not aware if assistance was available
- Perceived discrimination in provision of humanitarian assistance

Most commonly reported barriers that IDP households faced in accessing humanitarian assistance (by % of assessed communities) ^{4, ♦}

In communities where access to humanitarian assistance was reported

In communities where no access to humanitarian assistance was reported

- Assistance provided was insufficient to cover all people in need **63%** **1** **96%**
- Assistance provided was not relevant to all needs **50%** **2** **2%**
- Quantity of assistance provided to households was insufficient **44%** **3** **1%**

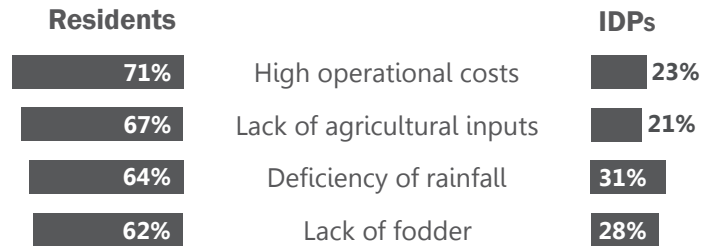
- No humanitarian assistance was available
- People did not comply with the eligibility criteria
- Not aware if assistance was available



Economic Conditions

Region	Median estimated monthly household expense for water for a household of six ^{5,6}	Median estimated monthly rent price for a two bedroom apartment ^{5,6}	Median estimated daily wage for unskilled labour ^{5,7,8}
Northeast Syria	15,000 SYP	40,000 SYP	6,000 SYP
Aleppo	10,000 SYP	25,000 SYP	5,000 SYP
Al-Hasakeh	25,000 SYP	75,000 SYP	6,000 SYP
Ar-Raqqa	2,000 SYP	40,000 SYP	6,000 SYP
Deir-ez-Zor	25,000 SYP	40,000 SYP	5,000 SYP

Most commonly reported barriers to accessing livelihoods related to agriculture (by % of assessed communities) ⁴



80% and 92%

% of assessed communities where KIs reported daily waged labour as a common source of income for residents and IDPs

72 days

Number of days the average day labourer would need to work to earn the monthly cost of basic SMEB[▲] items ^{5,9}

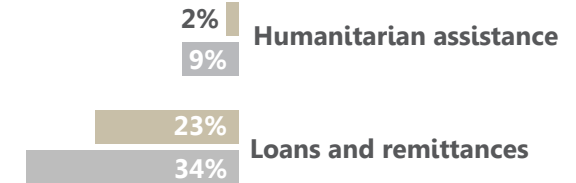
92% and 65%

% of assessed communities where KIs reported the insufficient income of households and lack of employment opportunities that match people's skills as barriers to meeting basic needs ⁸

% of assessed communities where common livelihood sources from agriculture were reported ⁴

Livelihood source	Residents	IDPs
Food crop production	37%	23%
Cash crop production	55%	4%
Livestock products	65%	28%
Sale of livestock	61%	28%

% of assessed communities where KIs reported the presence of residents and IDP households relying on non-productive sources of livelihoods to meet their basic needs ⁴



Intersectoral findings on unaffordability hindering access to goods and services

- KIs in **26%** of assessed communities cited that **rent** was unaffordable for the majority of people
- KIs in **55%** of assessed communities cited the high cost of **fuel for generators** as a common challenge
- KIs in **67%** of assessed communities cited the high cost of **solar panels** as a common challenge
- KIs in **39%** of assessed communities cited the high cost of **water trucking** as a common challenge
- KIs in **79%** of assessed communities cited the high cost of **food** as a common challenge ⁸
- KIs in **88%** of assessed communities cited the high cost of **health services** as a common challenge




Living Conditions

In **93%** of assessed communities at least **80%** of the resident population reportedly owned their shelter

In **82%** of assessed communities reportedly none of the IDP households owned their shelter

In **9%** of assessed communities at least one fifth of the IDP population reportedly lived in unfinished or abandoned residential buildings

In **9%** of assessed communities at least one fifth of the IDP population reportedly lived in tents

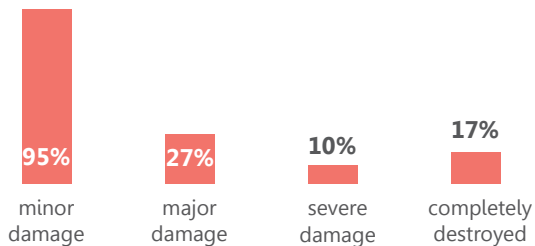
 A lack of toilets was reported as a shelter issue for IDPs in **17%** of assessed communities

 A lack of bathing facilities was reported as a shelter issue for IDPs in **12%** of assessed communities

 Problems with the drinking water were reported in **42%** of assessed communities

 **Water tasting bad** was the most commonly reported problem with drinking water (reported by KIs in 22% of assessed communities)

Reported presence of occupied shelters with damage across communities where damages were reported (by % of assessed communities) ^{5,10}



 **Shelter and repair materials being too expensive** was the most commonly reported challenge for households to repair their shelter (reported by KIs in 95% of assessed communities) ⁴

Reported sanitation issues affecting public space in the community (by % of assessed communities) ⁴

Rodents and/or pests are frequently visible **16%**

Solid waste in the streets **22%**

Sewage system pollutes public areas **11%**

Stagnant water **6%**

Flooding in the streets **2%**

 **98%** of assessed communities where KIs reported that households experienced barriers to accessing sufficient food ⁸

 In **19%** of these communities, KIs reported that the **unavailability of certain food items** was a challenge to accessing sufficient food ⁸

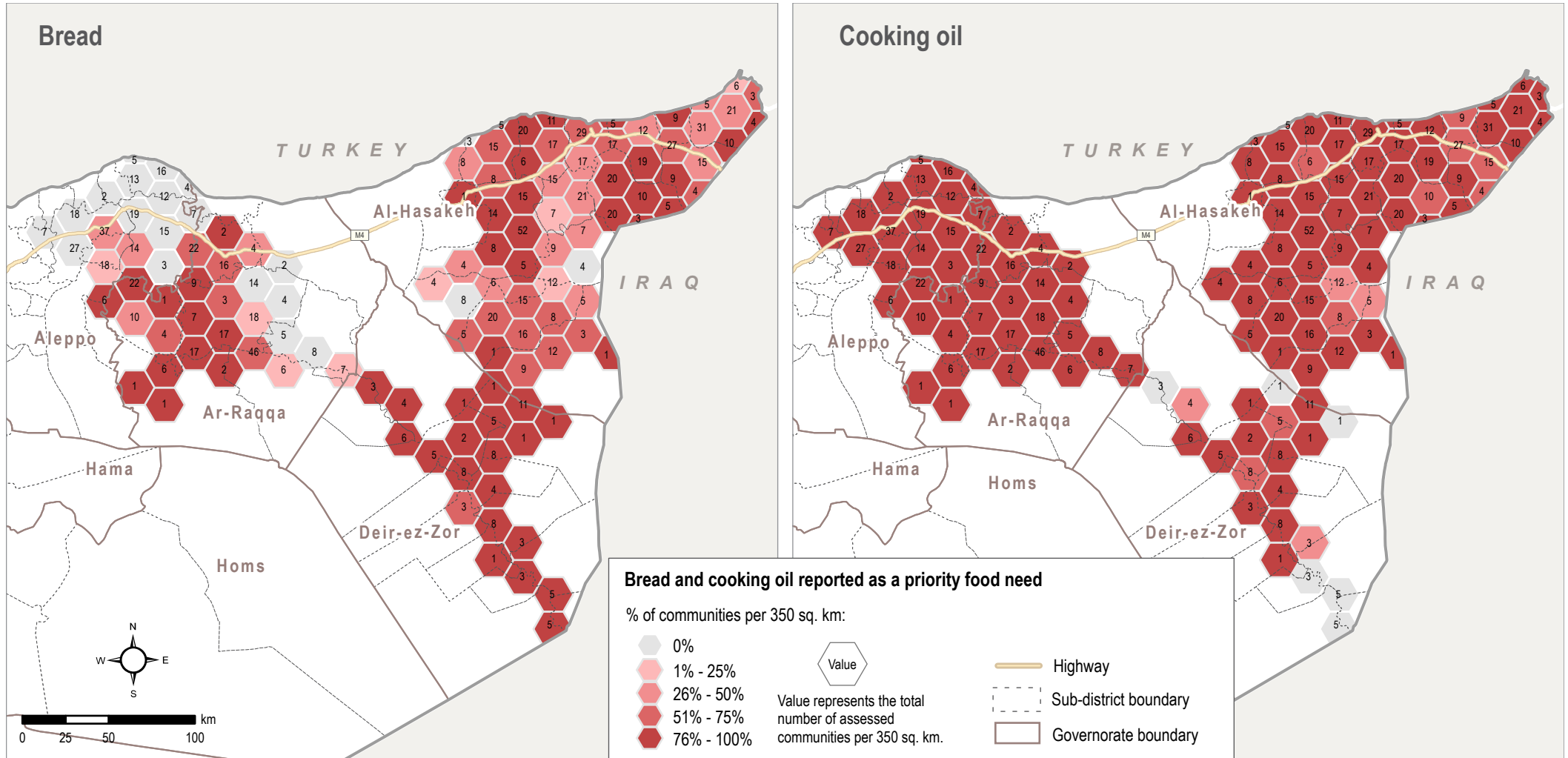
Most commonly reported coping strategies for a lack of food (by % of assessed communities) ⁴

- 1** Borrowing money to buy food **82%**
- 2** Relying on less preferred food / lower food quality **71%**
- 3** Buying food with money usually used for other things **71%**

 **High price of suitable foods formula** was the most commonly reported challenge to feeding young children (reported by KIs in 98% of assessed communities) ^{4,11}

Commonly reported **sources of food** for house-holds other than markets (by % of assessed communities) ⁴

- 1** Relying on food stored previously **38%**
- 2** Own production or farming **36%**
- 3** Food gifts from friends and family **10%**



Bread and Cooking Oil reported as a Priority Food Need

Note on the map

This map shows the percentage of communities where KIs indicated bread and cooking oil as a priority food need. In Deir-ez-Zor governorate, KIs in 95% of the assessed communities reported bread as a priority food need. Cooking oil was the most reported priority food need in Northeast Syria according to KIs in 91% of locations.



Access to Basic Services



Access to Electricity

5-6 hrs per day

was the most commonly reported range for hours of electricity accessible to households (reported by KIs in 33% of assessed communities)

Main network

was the most commonly reported main source of electricity (reported by KIs in 72% of assessed communities)

73%

% of assessed communities where KIs reported **local authorities rationing electricity** as a barrier for electricity access



Access to Water

65%

% of assessed communities where KIs reported that **not all households had access to sufficient water**



7 days	32%
5-6 days	11%
3-4 days	30%
1-2 days	9%
0 days	18%

Days per week where water from the network was available (by % of 787 communities connected to a water network)

Piped water network

was the most commonly reported source of drinking water (reported by KIs in 38% of assessed communities)

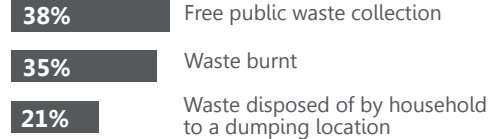


Access to Sanitation

80%

% of assessed communities where KIs reported that **no sewage system was present**

Most commonly reported ways people disposed of solid waste (by % of assessed communities)



31%

% of assessed communities where KIs reported waste removal services as a WASH priority need 8



Access to Markets

32%

% of assessed communities in which households reportedly were **unable to access markets in the assessed location**

People lack financial means to open shop/market

was the most commonly reported **reason for why markets were not functioning** (reported by KIs in 83% of assessed communities where markets were not functioning)

80%

% of assessed communities where KIs reported that the **lack of transportation to markets** was a barrier to physically accessing food markets

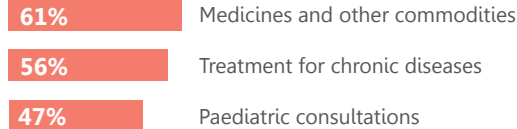


Access to Health Services

72%

% of assessed communities where KIs reported that the **households did not have access to health services in the assessed location**

Most commonly reported health priority needs (by % of assessed communities) 8



Going to the pharmacy instead of a clinic

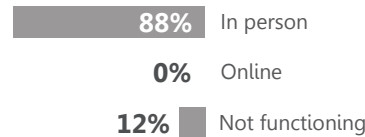
was the most commonly reported coping strategy for a lack of healthcare (reported by KIs in 95% of assessed communities)



Access to Education Services

29%
58%

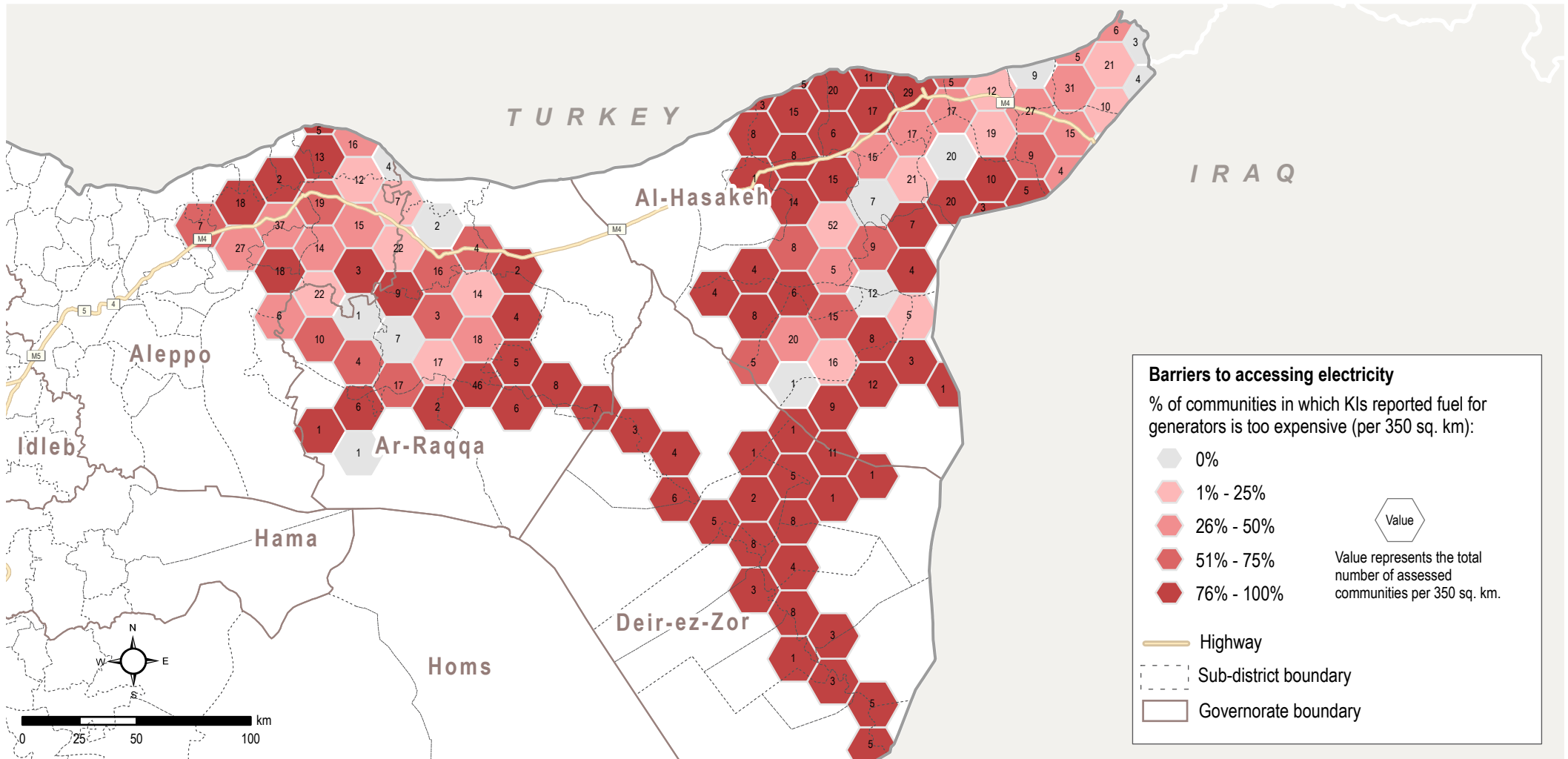
% of communities in which half or less of the school aged-children accessed school in the last 30 days for **residents** and IDPs



% of assessed communities where KIs reported on the functioning of education services in the assessed location 4

57%

% of assessed communities where KIs reported that the **high cost of transportation to school** was a barrier to accessing education services 8



Barriers to Accessing Electricity

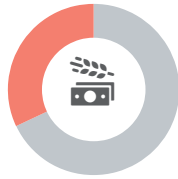
Note on the map

This map shows the percentage of communities where KIs indicated fuel for generators is too expensive as a barrier to accessing electricity. KIs in 99% of the assessed communities in Deir-ez-Zor governorate indicated this barrier.



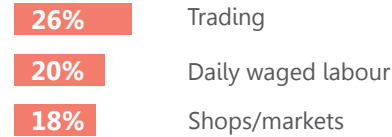
COVID-19

Effects of COVID-19 on livelihoods sectors in the community (by % of assessed communities)

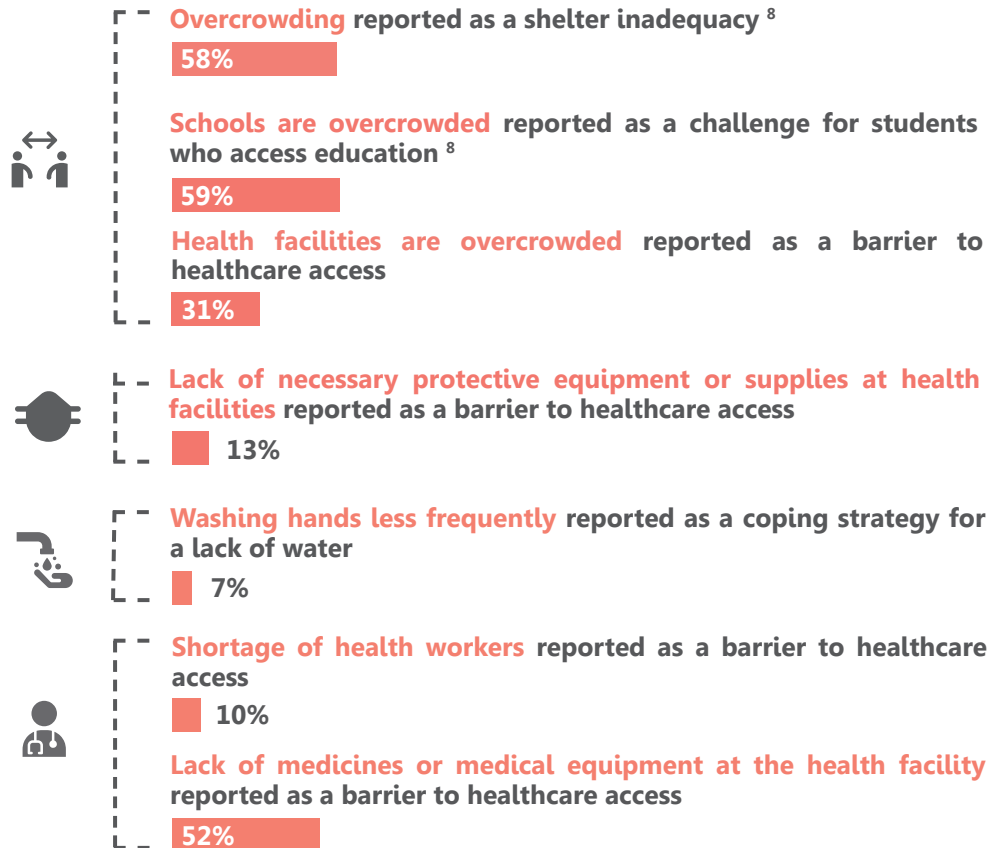


None of the available livelihood sectors were affected 68%
At least one of the available livelihood sectors was partially or totally affected 32%

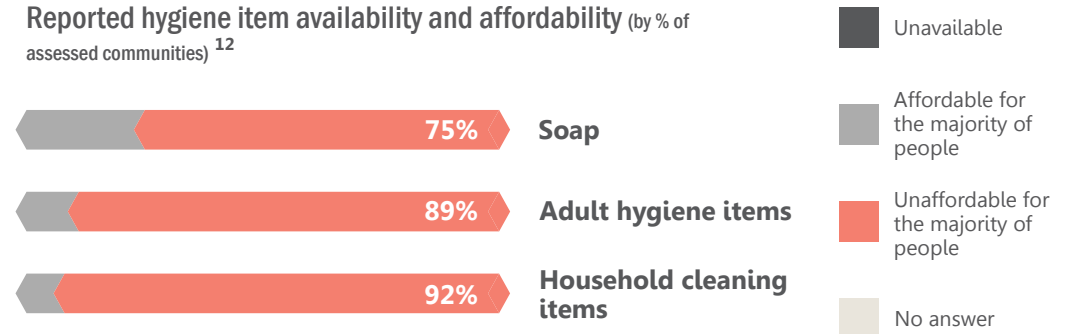
Most commonly reported sectors affected by COVID-19 (by % of assessed communities)



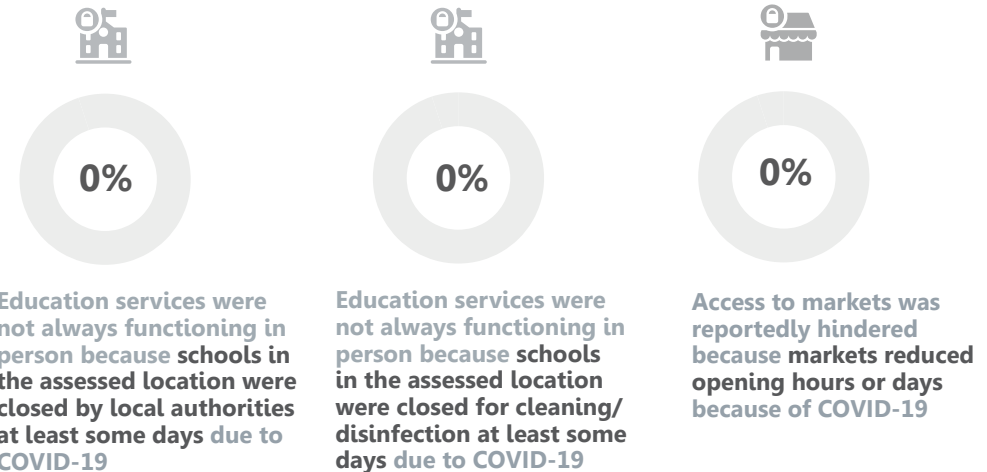
% of assessed communities where COVID-19 risk indicators were reported by KIs

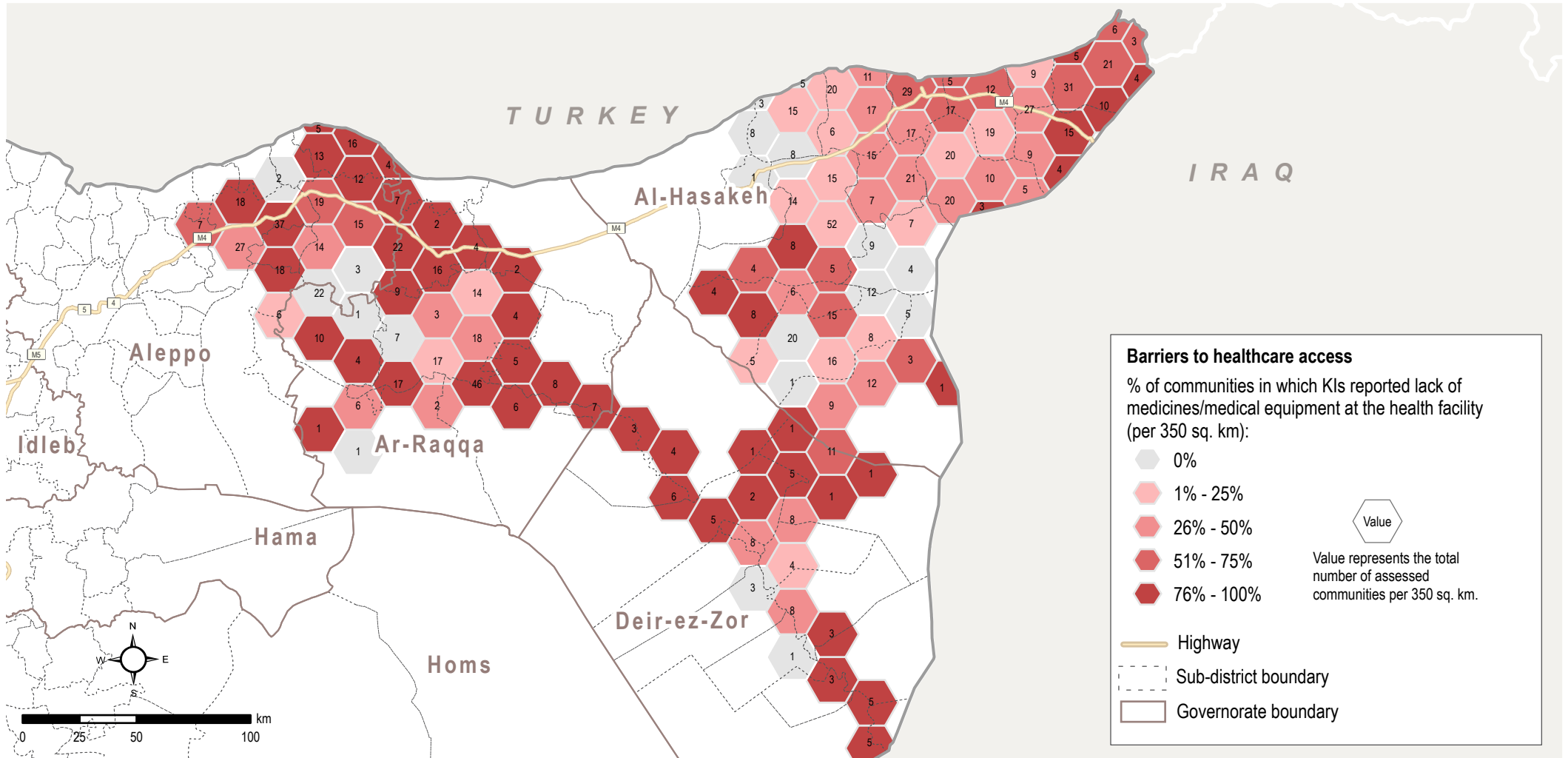


Reported hygiene item availability and affordability (by % of assessed communities)¹²



% of assessed communities where COVID-19 related barriers to access services were reported





Barriers to Healthcare Access

Note on the map
 This map shows the percentage of communities where KIs indicated the lack of medicines or medical equipment at health facilities as barriers to accessing healthcare. Deir-ez-Zor and Ar-Raqqa governorates in particular display a high proportion of communities (71% and 65% respectively) that health facilities reportedly lacked medicines or medical equipment.



Security and Protection

Intersectoral findings on security



General safety and security concerns restricting movement to markets was a reported barrier to market access in **44** communities

General safety and security concerns at markets was a reported barrier to market access in **33** communities

Movement restrictions was reported as a protection risk in **22** communities⁸



Tribal disputes were reported as a protection risk in **25** communities⁸

Theft was reported as a protection risk in **208** communities⁸

Fear from imminent conflict was reported as a protection risk in **57** communities⁸



The inability to lock homes securely was reported as a shelter inadequacy in **42%** of assessed communities⁸

Lack of privacy inside the shelter was reported as a shelter inadequacy in **64%** of assessed communities⁸

Lack of lighting around the shelter was reported as a shelter inadequacy in **83%** of assessed communities⁸

The security situation was reported as a barrier to shelter repairs in **3%** of assessed communities



Safety and security concerns travelling to health facilities was reported as a barrier to healthcare in **23** communities

Most commonly reported protection priority needs (by % of assessed communities)^{3,8}

- 1 81%** Special assistance for vulnerable groups
- 2 50%** Specialised child protection services
- 3 29%** Psychosocial support

% of assessed communities where the lack of civil documentation for residents and IDPs was reported

- 17%** Lack or loss of civil documentation as a protection risk
- 16%** Some people did not have the necessary personal documents as a barrier to accessing humanitarian assistance*
- 3%**
- 2%**

% of assessed communities where extreme coping strategies used by residents and IDPs to meet basic needs were reported⁴

Residents	IDPs
11% Early marriage	16%
2% Forced marriage	4%
2% High risk work	3%
1% Sending family members to beg	4%
50% Sending children (15 or below) to work	66%

Age, Gender, and Diversity

KIs in **33%** of assessed communities reported a **lack of employment opportunities for women** as a barrier to meeting basic needs⁸

KIs in **22%** of assessed communities reported a **lack of employment opportunities for persons with a disability** as a barrier to meeting basic needs⁸

KIs in **15%** of assessed communities reported a **lack of privacy for women and girls at health facilities** as a barrier to healthcare access

KIs in **25%** of assessed communities reported a **lack of market access for people with restricted mobility**

KIs in **7%** of assessed communities reported that **women and girls feel unsafe when traveling to markets**

Children below the age of 12 were reported as a group affected by child labour in **10%** of assessed communities⁸

Hazardous child labour was reported as a protection risk in **22** communities⁸

Endnotes

1. Aleppo governorate includes Menbij and Ain Al Arab districts.
2. KIs were asked to select a first, second, and third highest priority needs in their communities. The ranking shows the sectors most frequently chosen as either first, second or third highest priority. The overall priority need refers to the frequency a sector was selected across all three categories (first, second or third highest priority).
3. KIs could select three answers, thus findings might exceed 100%.
4. KIs could select multiple answers, thus findings might exceed 100%.
5. KIs were asked about the situation at the time of data collection, instead of the last 30 days.
6. KIs had the option to select the price in United States Dollars (USD), Turkish Lira (TRY), or Syrian Pounds (SYP). When the price was not reported in SYP, the NES REACH Market Monitoring exchange rate was used to calculate the amount in SYP. According to the REACH Market Monitoring December 2021, 1 USD = 3,525 SYP; 1TRY= 260 SYP.
7. According to the NES REACH Market Monitoring December 2021, 1 USD = 3,525 SYP.
8. Findings for residents and IDPs were merged. The merge was calculated as follows: (option was selected for either residents or IDPs) / (communities reporting challenges/barriers/coping strategies for either residents or IDPs).
9. According to the NES REACH Market Monitoring December 2021, the Survival Minimum Expenditure Basket (SMEB) = 433,317 SYP.
10. Minor damage (cracks in walls, leaking roof, need of new doors and window repairs, etc.); Major damage (buildings with extensive damage to window frames and doors, but no structural damage to columns, slabs, or loadbearing walls); Severe damage (buildings with significant structural damage to column slabs, or loadbearing walls, cracking, steel elements and deformations visible in concrete; the building would require extensive repairs); Completely destroyed (buildings with structural damage so significant that rehabilitation is not possible).
11. KIs were asked about the situation in the last two months, instead of the last 30 days.
12. Adult hygiene items include: shampoo, toothbrush, and toothpaste. Household cleaning items include: washing powder, liquid, and dish detergent.

◆ By number of communities where KIs reported the relevant indicator (access/barriers/inadequacies/damages/coping strategies/risks etc.) for the relevant population group(s)

Indicator	Subset	Indicator	Subset
N.o of communities reporting on:		N.o of communities reporting on:	
Residents	1,244	Barriers to assistance access (IDPs)	394
IDPs	650	Barriers to accessing sufficient food (merge)	1,219
Challenges to assistance access (resident)	313	Days when water is available from network	787
Barriers to assistance access (resident)	905	Barriers to markets functioning	398
Challenges to assistance access (IDPs)	238		

Sources

- a. Food and Agriculture Organization of the United Nations (2021). Special Report : 2021 FAO Crop and Food Supply Assessment Mission to the Syrian Arab Republic. Retrieved from <https://www.fao.org>
- b. World Food Program (2022). Syria Country Office Market Price Watch Bulletin Issue 85, December 2021. Retrieved from <https://reliefweb.int>
- c. Center for Operational Analysis and Research (2022). Syria's Wheat Crisis Foreshadows Famine. Retrieved from <https://coar-global.org>
- d. Mercy Corps Humanitarian Access (2021). Syria : Weekly Report 3-9 December 2021.
- e. Christou, W. (2021). Fuel shortage chills northeast Syria as oil production lags. Al-Monitor. Retrieved from <https://www.al-monitor.com>
- f. World Health Organization (2022). Bi-weekly Situation Report: Whole of Syria – Issue 1 / 1-15 January 2022. Retrieved from <https://reliefweb.int>
- g. al-Nahhas, H., Fricke, A. L., Moran, A., Rayes, D. (2021). Destruction, Obstruction, and Inaction: The Makings of a Health Crisis in Northern Syria. Physicians for Human Right. Retrieved from <https://phr.org>
- h. Lucente, A. (2022). Northern Syria health care plagued by issues as UN extends cross-border aid. Retrieved from <https://www.al-monitor.com>

About REACH

REACH facilitates the development of information tools and products that enhance the capacity of aid actors to make evidence-based decisions in emergency, recovery and development contexts. The methodologies used by REACH include primary data collection and in-depth analysis, and all activities are conducted through inter-agency aid coordination mechanisms. REACH is a joint initiative of IMPACT Initiatives, ACTED and the United Nations Institute for Training and Research - Operational Satellite Applications Programme (UNITAR-UNOSAT). For more information please visit our website: www.reach-initiative.org. You can contact us directly at: geneva@reach-initiative.org.