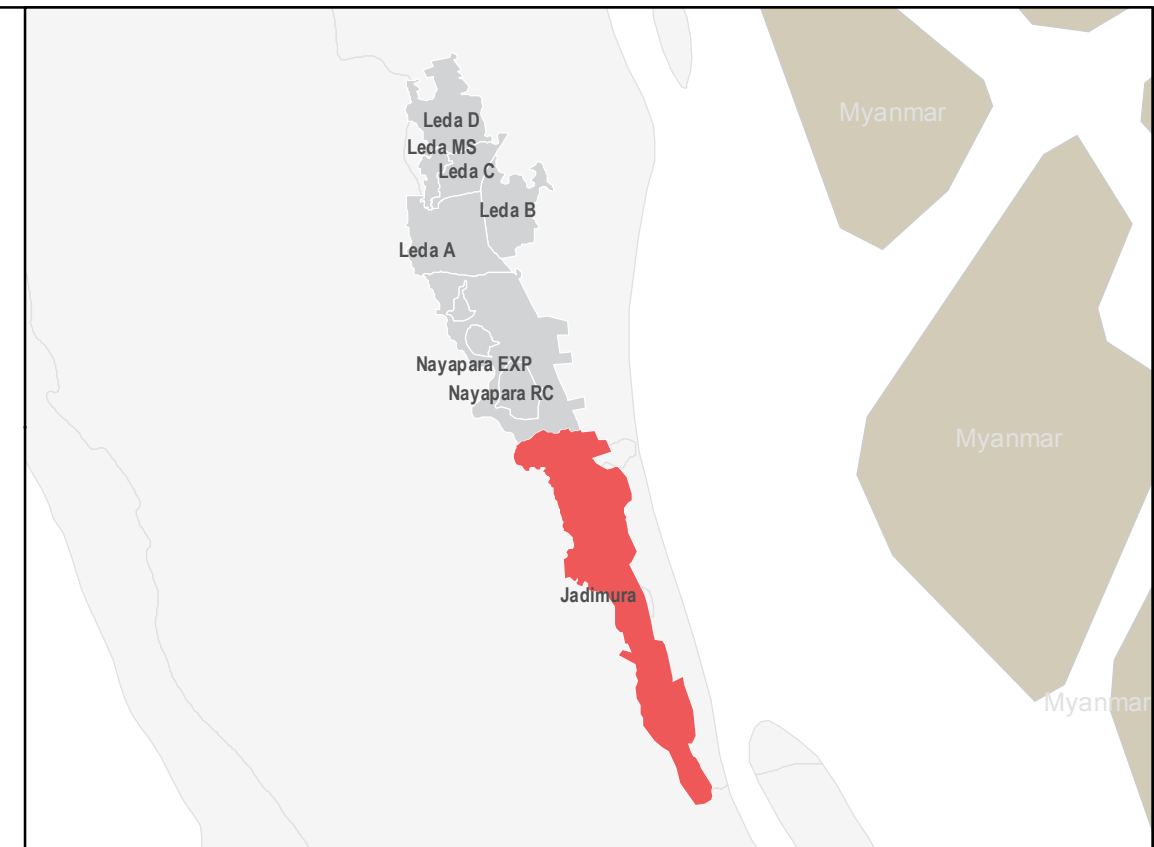
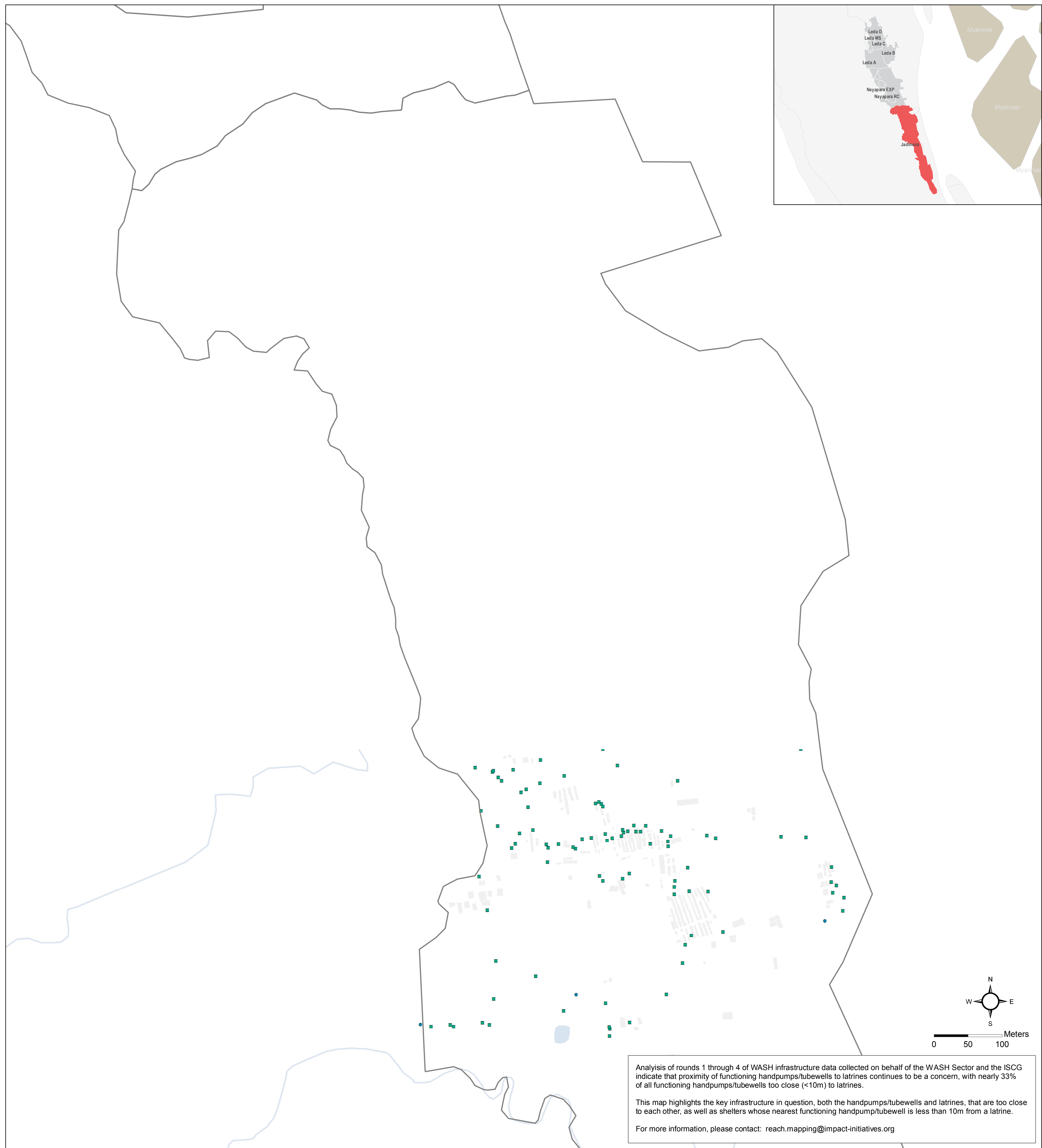


Jadimura - Handpump and Tubewell Proximity to Latrines

For Humanitarian Purposes Only
Production date: 14 March 2018



Analysis of rounds 1 through 4 of WASH infrastructure data collected on behalf of the WASH Sector and the ISCG indicate that proximity of functioning handpumps/tubewells to latrines continues to be a concern, with nearly 33% of all functioning handpumps/tubewells too close (<10m) to latrines.

This map highlights the key infrastructure in question, both the handpumps/tubewells and latrines, that are too close to each other, as well as shelters whose nearest functioning handpump/tubewell is less than 10m from a latrine.

For more information, please contact: reach.mapping@impact-initiatives.org



Handpumps / Tubewells

- Functioning handpump/tubewell <10m from latrine
- Other functioning handpump/tubewell

10m buffer from handpump/tubewell <10m from latrine

Latrines

- Latrine <10m from functioning handpump/tubewell
- Other latrine

Shelters

- Shelter w/ nearest functioning handpump <10m from latrine
- Other shelters

Camp Boundaries

River; Water Body

- Main Road
- Vehicle Road
- Main Path
- Footpath

Data Sources:
WASH Infrastructure - REACH
Shelter Footprints - REACH / UNOSAT
Roads / Footpaths - REACH
Camp / Admin Boundaries - ISCG / OCHA
River / Water Body - OSM

Coordinate System: WGS 1984 UTM Zone 46N
Projection: Transverse Mercator

Note: Data, designations and boundaries contained on this map are not warranted to be error-free and do not imply acceptance by the REACH partners, associates, donors mentioned on this map.

In support of the



Funded by



In partnership with

