



# IDP Camp Profile - Khanke

Dahuk, Iraq  
December 2016

Management agency: BRHA  
Manager/Focal point: Eyad Ejaj Viyan  
Phone number: 7504783687  
Email: khankicamp@yahoo.com  
Registration actor: Camp Management

## Summary

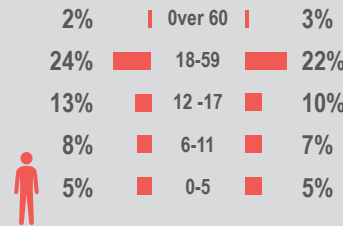
This profile provides an overview of conditions in Khanke camp. Primary data was collected through household surveys on 26-12-2016. Households were randomly sampled to a 95% confidence and 10% margin of error, based on population figures provided by CCCM. In some cases, additional information from camp managers has been used to support findings. Round VI of data collection was in August 2016

## Camp Overview

# of individuals: 16,017  
# of households: 2,850  
Date opened: 20-08-2014  
Occupied number: 3,120  
Ongoing extension: no  
Planned capacity: 3,120  
Camp area: 729,194m<sup>2</sup>

## Demographics

52% male / 48% female

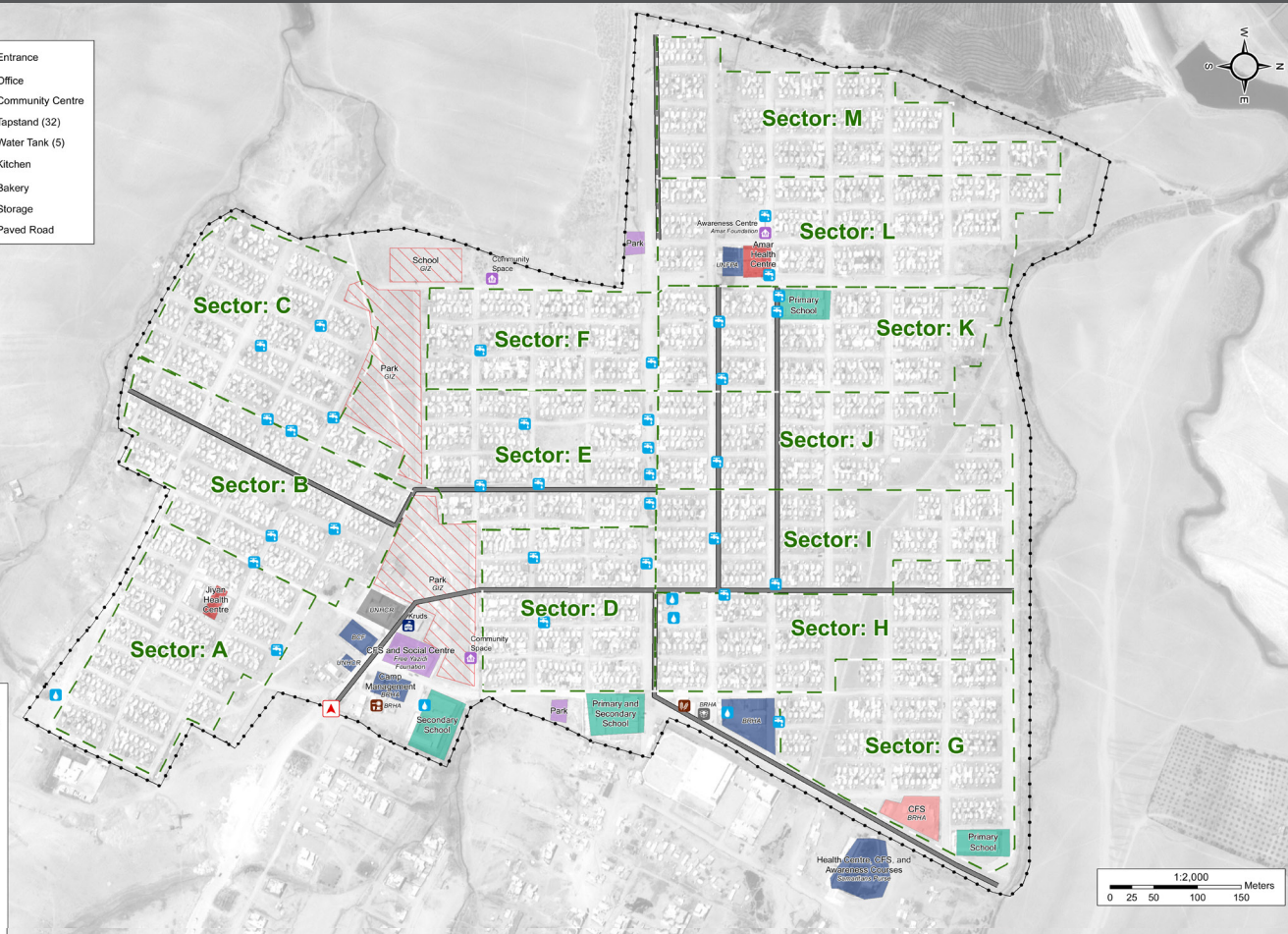


## Location Map



## IDP Camp Map - Khanke

Lat. 36° 46' 46.403" N Long. 42° 46' 25.41" E



## Sectoral Minimum Standards

		Target	Previous Round	Current Round	Achievement
Education	% of children aged 6-11 attending formal school	100%	80%	80%	●
	% of children aged 12-17 attending formal school	100%	70%	64%	●
Food	% of households accessed Family Food Parcel or equivalent in the past month	100%	98%	86%	●
Health	Health services are available on-site or within walking distance	Yes	Yes	Yes	●
CCCM	Average open area per household	min. 30m <sup>2</sup>	211m <sup>2</sup>	215m <sup>2</sup>	●
Protection	% of IDPs registered on an individual basis (MODM/DDM)	100%	98%	99%	●
Shelter	Average covered area per person	min. 3.5m <sup>2</sup>	3.8m <sup>2</sup>	3.1m <sup>2</sup>	●
	Average number of individuals per shelter	max.5	5	5	●
WASH	# of persons per latrine	max. 20	10	20	●
	# of persons per shower	max. 20	21	20	●
	Frequency of solid waste disposal at least weekly	Min. weekly	Yes	Yes	●

Targets based on minimum standards agreed with the CCCM Cluster, Iraq. Findings based on household-level data, enumerator field observations, and camp management documentation  
● Minimum standard reached, ● More than 50% minimum standard reached, ● Less than 50% of minimum standard reached or not at all





# IDP Camp Profile - Khanke

Dahuk, Iraq  
December 2016

Management agency: BRHA  
Manager/Focal point: Eyad Ejaj Viyan  
Phone number: 7504783687  
Email: khankicamp@yahoo.com  
Registration actor: Camp Management

## Shelter

### Top observed shelter type

Tent 100%

### Top reported needed shelter items

Tarpaulin 100%

Sun shading net 58%

Timber 47%

### Top reported needed basic items

Blanket 83%

Cooker 79%

Mattresses 64%

### Top reported needed winter item

Kerosene 42%

### Top reported needed summer item

Rechargeable fan 75%

## Food Security

### Reported access to food assistance

86% accessed food assistance in past month

96% received Public Distribution System (PDS) in past month

### Top three food consumption coping strategies

Cheaper 55%

Less meals 17%

Borrowed 14%

## WASH

### Latrines and showers

64% reported public or communal latrines

58% public/communal latrines lockable from the inside

57% public/communal latrines with functioning lighting

### Top three reported methods of waste removal

Collected 100%

n/a n/a

n/a n/a

### Reported drinking water sources

0% connection inside the home to collective water storage

100% connection inside the home to private water storage

0% communal water tap outside the shelter

### Access to water

10% reported 24 consecutive hours without access to water in the past month

## Community Organisation

### IDP committees

98% reported awareness of IDP committee(s)

### Complaints mechanism

39% made a complaint about conditions or assistance

## Protection

### Family Separation

1% reported hosting unaccompanied or separated minors

0% reported that other family members intended to join them

### Vulnerable groups

Pregnant / lactating women 7%

Chronically ill individual(s) 7%

Disabled individual(s) 4%

Female headed households 11%

### Intentions

0% planned to move to a different location in next 3 months

### Restrictions

100% reported being able to leave the camp temporarily (e.g. to go to the market, for livelihood opportunities)

## Livelihoods

19% reported as being economically inactive

### Top three income sources\*:

Public security official 27%

No livelihood 19%

Self-employed 7%

\*Households were asked to select all income sources within household.

### Top three reported livelihood coping strategies

Debt 57%

Sold assistance 52%

Selling assets 25%