

NORTHWEST SYRIA MARKET MONITORING EXERCISE

Snapshot: 5-13th April 2021

INTRODUCTION

To inform humanitarian cash programming, REACH, in partnership with the Cash Working Group (CWG), conducts monthly Market Monitoring Exercises in northern Syria to assess the availability and prices of 36 basic commodities that are typically sold in markets and consumed by average Syrian households, including food and non-food items, water, fuel, and cellphone data.

Of these, 18 items comprise the Survival Minimum Expenditure Basket (SMEB; see below), which represents the minimum, culturally adjusted items required to support a 6-person household for a month.

Data collection took place between 5-13th April 2021 and was conducted by Care Shafak, GOAL, People In Need, Syrian Association for Relief and Development (SARD), Violet, NRC and REACH.

The accompanying data is disseminated monthly and is distributed through partners across the humanitarian community. See REACH Resource Centre for the [April 2021 data](#).

SURVIVAL MINIMUM EXPENDITURE BASKET (SMEB) CONTENTS

	Item	Quantity	
Food Items	Bread	37 kg	
	Bulgur	15 kg	
	Chicken	6 kg	
	Eggs	6 kg	
	Fresh vegetables	12 kg	
	Ghee/vegetable oil	7 kg/L	
	Red lentils	15 kg	
	Rice	19 kg	
	Salt	1 kg	
	Sugar	5 kg	
	Tomato paste	6 kg	
	Hygiene items	Bathing soap	12 bars
		Laundry/dish soap	3 kg
		Sanitary pads	4 packs of 10
Toothpaste		200 g	
Fuel	Cooking fuel*	25 L	
Water	Water trucking	4500 L	
Telecom	Smartphone data	1 GB	
Other	Float (other costs)**	7.5% total value	

* Kerosene in northern Syria

** Float only applied to observations where prices of all SMEB contents could be collected

KEY DEVELOPMENTS

Coverage and data collection dates

In April 2021, REACH and partners covered:

- 2 governorates
- 8 districts
- 27 subdistricts
- 70 communities
- 1,909 individual shops

In light of the fluctuation of the Syrian Pound (SYP)'s value and resulting market disruption, prices in the Market Monitoring dataset and output should be seen as representative only of the markets and dates where and when information was collected (5-13th April).

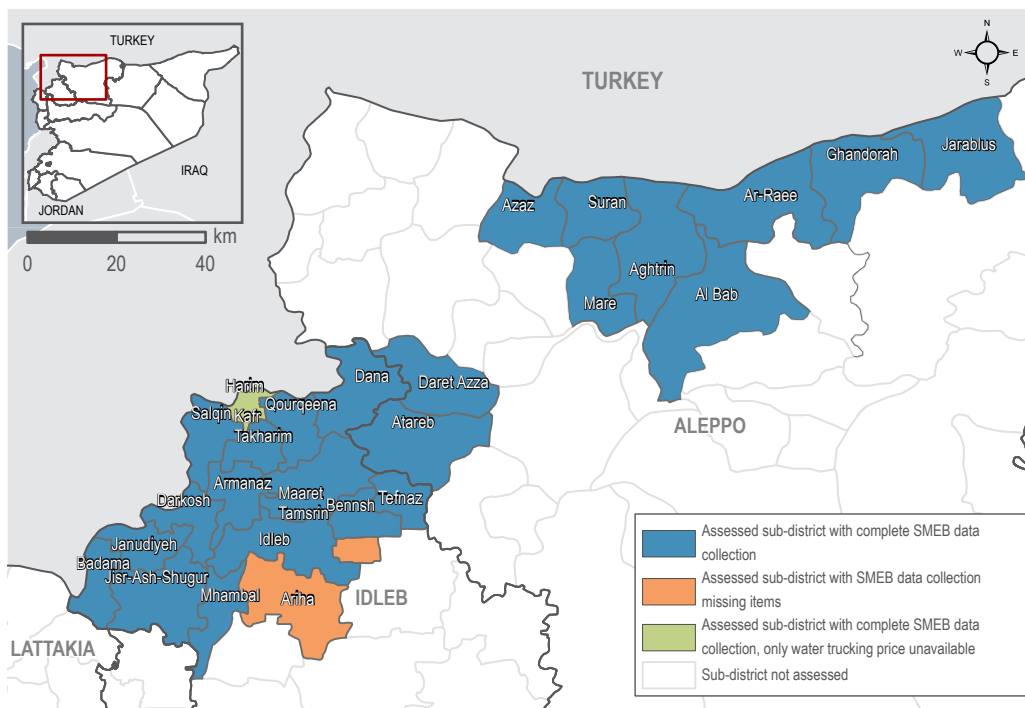
High northwest SMEB SYP cost; SMEB USD cost remains stable

In April, the value of the regional Survival Minimum Expenditure Basket (SMEB) dropped slightly to 411,125 SYP, a 3% decrease compared to March, although a 74% long-term increase since October 2020, hovering just below the highest ever recorded price in the Market Monitoring Exercise in NWS, set last month. The SMEB in United States Dollar (USD) increased slightly from 113 USD in March to 116 USD in March alongside a slight depreciation of the SYP against the USD. The average SMEB value in USD has remained - between 113 and 116 USD - since the beginning of 2021, however this is the highest cost in USD since May 2019, two years ago.

Slight appreciation of the SYP against the USD. Depreciation of the TRY against the USD.

In April, the informal USD/SYP regional median exchange rate decreased by 5% since March and reached a regional median of 3,528 USD/SYP. However, prices remain high with a six-month increase of 56% in the exchange rate since October 2020, highlighting that the value of the SYP remains an unstable currency against the USD. The highest exchange rate was recorded at 4,020 SYP to 1 USD in Dabeq community in Aleppo governorate. The informal USD/TRY exchange rate decreased by 11% in April to 8.15 TRY to 1 USD, although this is only a 4% six-month increase since October 2020.

ASSESSED AREAS AND COVERAGE



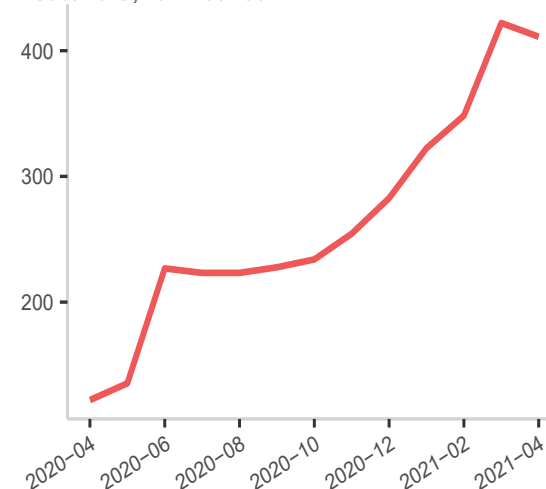
MEDIAN SMEB COST IN SYP (USD), BY REGION

411,125 SYP (116 USD)

NORTHWEST SYRIA
- IDLEB, WESTERN & NORTHERN ALEPPO GOVERNORATES

MEDIAN SMEB COSTS, BY MONTH

Thousand Syrian Pounds



KEY DEVELOPMENTS

Transport fuel prices remain high

In April, the regional median price for transport fuel was 2,433 SYP per litre, a relatively stable price with a 0.3% increase since March, but an increase of 87% since October 2020. The price of high-quality petrol increased by 6% since March, and by 98% since October 2020. The price of high-quality diesel saw a 2% decrease in price, although this has increased by 97% since October 2020. As in previous months, high quality transport fuels were reported as available (above 98%) by surveyed vendors. The significant unavailability of lower quality but less expensive fuels (largely European fuels imported via Turkey) forces prices for high quality diesel and petrol to remain high, driven both by increasing demand as well as by fluctuating exchange rates of both the SYP and the TRY against the USD.

Prices for manually refined fuels showed different price developments between March and April. Manually refined diesel decreased by 5% since March, although this is an increase of 69% since October 2020. Conversely, manually refined petrol increased by 24% since March, an increase of 101% since October 2020. Manually refined fuels remain largely unavailable in NWS due to low levels of import, caused by the devaluation of the SYP the Turkish lira (TRY) against the dollar. Incidents in and around refineries further reduced the availability of manually refined fuels, according to REACH field teams.

The price of manually refined kerosene, primarily used for cooking and heating, increased by 7% in price since March. This continues an 96% six-month price increase since October 2020. The price increase is attributed to an increase in unavailability. In April, manually refined kerosene was reported as unavailable by 59% of vendors, an increase of 6 percentage points since March. However, LP gas prices remained stable with no change since March yet has increased by 98% since October 2020. It continued to be recorded as available by 100% of surveyed vendors and is much more widely used compared to kerosene, according to REACH field teams.

Slight drop in food item prices

The cost of the regional SMEB food component decreased slightly to 283,725 SYP in April, a 3% decrease since March but a 66% increase since October 2020. The vegetable component of the SMEB increased slightly by 2% since March. This is mostly due to the end of season for tomatoes, which increased by 52% in price due to a switch to imports which are affected by crossing fees. Other vegetable components all decreased in price at the start of the Spring season, whereby cucumbers decreased by 9%, onions decreased by 13%, and potatoes decreased by 34% in price. This is also attributed to the appreciation of the SYP.

Bulk food prices also decreased by 7% overall since March, again attributed to the appreciation of the SYP. Salt decreased by 17%, tomato paste decreased by 13%, bulgur and red lentils both decreased by 8%, rice decreased by 2%, sugar decreased by 2%, all attributed to the recent appreciation of the SYP. However, bulk foods have increased by 61% overall since October 2020. They are rarely produced locally, subjecting them to import fees and fluctuations of the SYP.

The price of bread (bag of 8 pieces) also decreased by 5% since March, reaching a regional median of 950 SYP, although this is an increase of 58% since October 2021. Changes in bread prices are primarily due to a similar rise in the price of flour (7% decrease since last month, but a 75% increase since October 2020), a product which is in short local supply in the region, and for which import prices are dependent on fluctuating exchange rates.

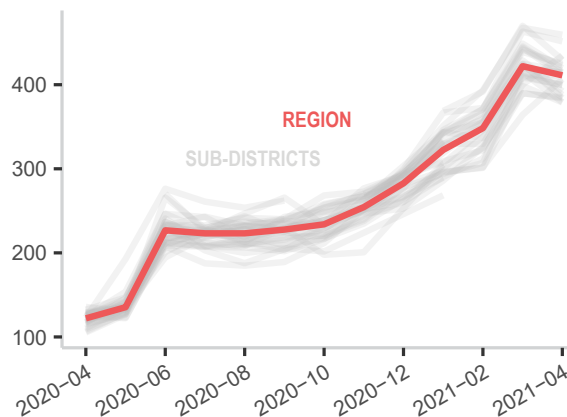
Additionally, ongoing high prices were also recorded for other SMEB food items such as chicken, the price of which decreased slightly by 3% since March yet has increased by 92% since October 2020, due to a combination of factors including SYP fluctuations, the general high costs of transportation and poultry feed. For similar reasons, eggs decreased by 3% in price since March but have increased by 37% since October 2020.

MEDIAN SMEB COSTS & CHANGES

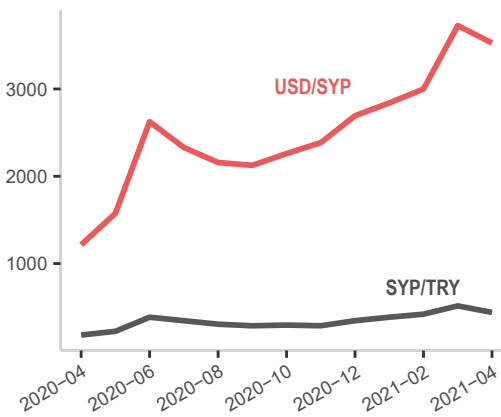
Syrian Pounds

MEDIAN SMEB COSTS, BY MONTH

Thousand Syrian Pounds



EXCHANGE RATES, BY MONTH & CURRENCY



Sub-district	SMEB	One month change*	Six month change*	Sub-district	SMEB	One month change*	Six month change*
Northwest Syria	411,125	-3%	74%	Harim**	399,308	2%	71%
Aghtrin	385,011	-1%	78%	Idleb	451,511	-3%	89%
Al Bab	379,046	-5%	75%	Janudiyeh*	402,292	-3%	NA
Ariha*	NA	NA	NA	Jarablus	434,615	9%	88%
Armanaz	459,409	-2%	81%	Jisr-Ash-Shugur	416,866	-2%	84%
Ar-Ra'ee	383,730	-2%	76%	Kafr Takharim	414,583	-7%	66%
Atareb	429,564	-9%	NA	Maaret Tamsrin	414,243	-2%	60%
A'zaz	379,202	-9%	70%	Mare'	399,282	-3%	61%
Badama	399,991	-2%	49%	Mhambal	414,446	-1%	88%
Bennsh	387,956	-8%	62%	Qourqeena	422,916	-4%	72%
Dana	424,933	-3%	68%	Salqin	419,626	-7%	76%
Daret Azza	384,253	-10%	67%	Sarmin*	NA	NA	NA
Darkosh	410,948	-7%	72%	Suran	411,301	0%	79%
Ghandorah	406,592	12%	84%	Teftnaz	392,189	-9%	68%

+ For price and change calculations, only the communities within a sub-district with consistent coverage across months are included. This applies to all the following tables.

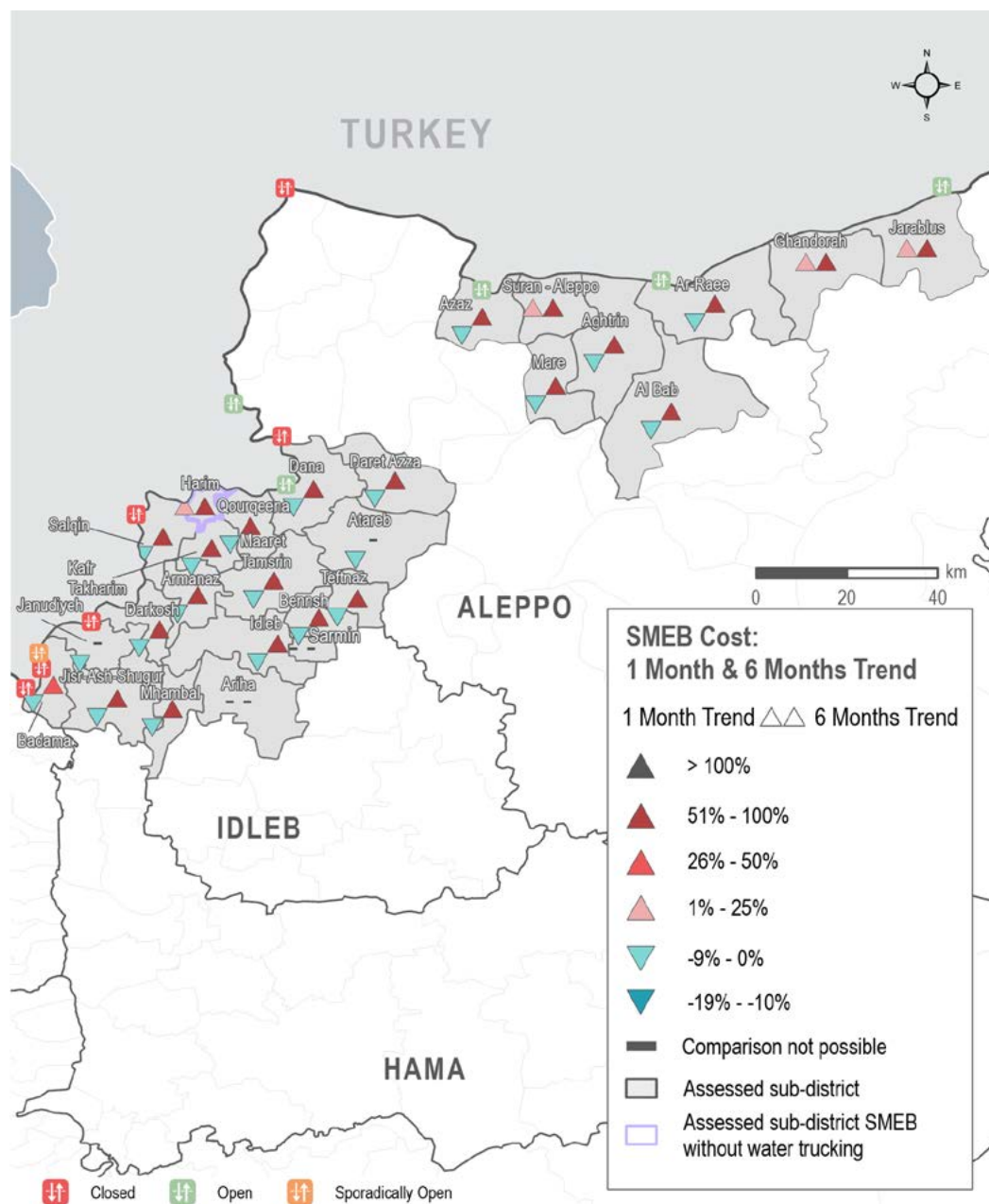
* For these sub-districts, more than 50% of the SMEB items median prices rely on less than 3 observations.

** For these sub-districts, all of the SMEB items median prices rely on less than 3 observations.

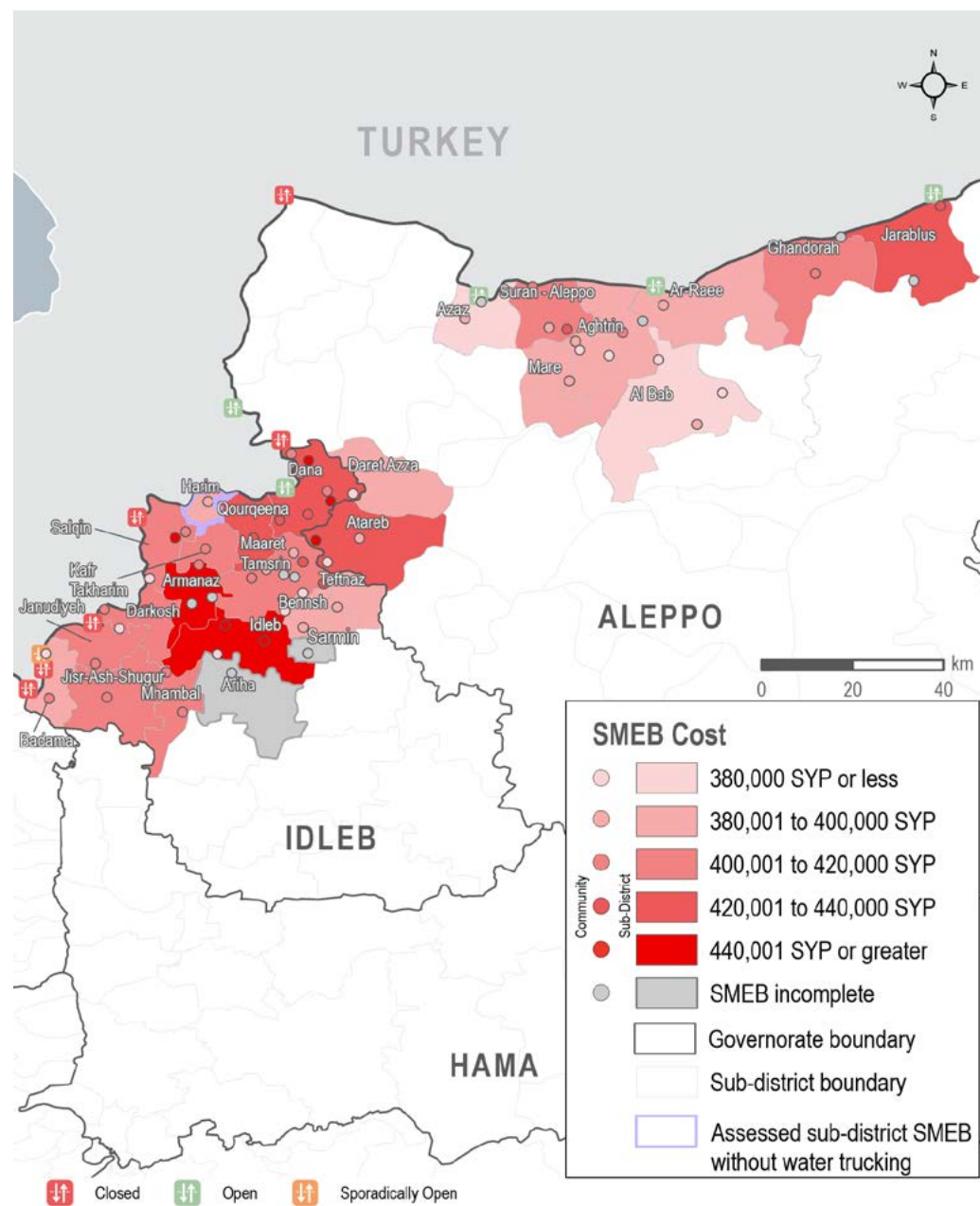
Note: Lack of data for a SMEB item does not necessarily imply a shortage.

NORTHWEST SYRIA - KEY DEVELOPMENTS AND OVERVIEW

SMEB COST: ONE MONTH & SIX MONTHS TREND



SMEB COST RANGES (SYP), BY SUB-DISTRICTS & COMMUNITIES



NORTHWEST SYRIA - SMEB FOOD ITEMS

MEDIAN SMEB COST: FOOD ITEMS

Syrian Pounds

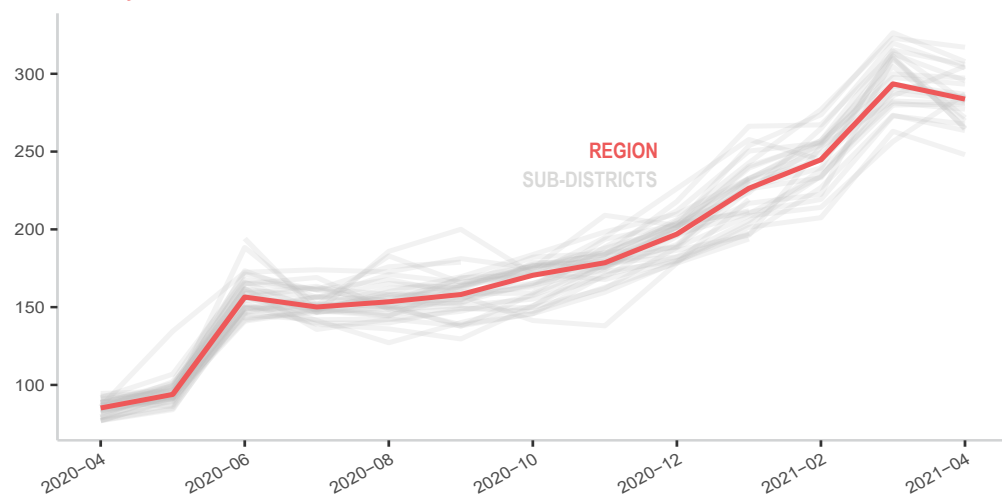
Sub-district	SMEB Food	One month change	Six month change	Sub-district	SMEB Food	One month change	Six month change
Northwest Syria	283,725	-3%	66%	Harim	281,150	0%	57%
Aghtrin	263,500	-4%	81%	Idleb	286,766	-2%	68%
Al Bab	247,989	-6%	70%	Janudiyeh	285,050	-2%	55%
Ariha	NA	NA	NA	Jarablus	304,846	7%	94%
Armanaz	317,055	-2%	79%	Jisr-Ash-Shugur	284,463	-3%	72%
Ar-Ra'ee	280,600	0%	86%	Kafr Takharim	303,714	-5%	72%
Atareb	307,829	-6%	76%	Maaret Tamsrin	283,175	-2%	60%
A'zaz	271,705	-12%	75%	Mare'	283,725	-2%	61%
Badama	267,700	-2%	47%	Mhambal	297,241	-1%	87%
Bennsh	265,091	-15%	52%	Qourqeena	281,945	-10%	61%
Dana	293,334	-1%	68%	Salqin	305,950	-3%	86%
Daret Azza	269,725	-11%	63%	Sarmin*	NA	NA	NA
Darkosh	295,705	-5%	73%	Suran	277,266	-1%	75%
Ghandorah	286,950	12%	92%	Teftnaz	264,496	-15%	54%

* For these sub-districts, more than 50% of the SMEB food items median prices rely on less than 3 observations.

** For these sub-districts, all of the SMEB food items median prices rely on less than 3 observations.

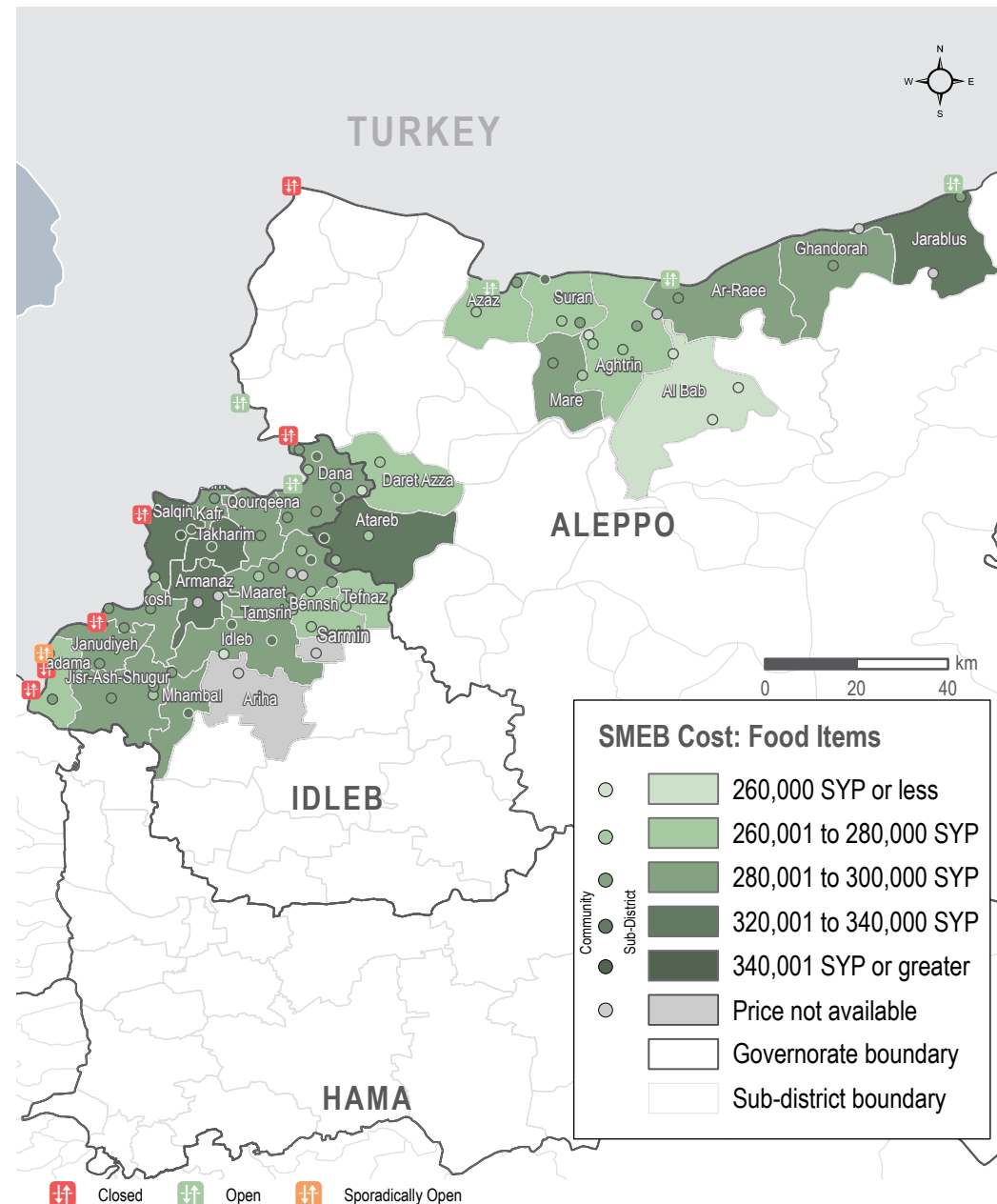
MEDIAN SMEB COST: FOOD ITEMS, BY MONTH

Thousand Syrian Pounds



SMEB FOOD ITEMS' COST

Sub-districts & Communities, Syrian Pounds



NORTHWEST SYRIA - SMEB WATER TRUCKING

MEDIAN SMEB WATER TRUCKING PRICE

4,500L, Syrian Pounds

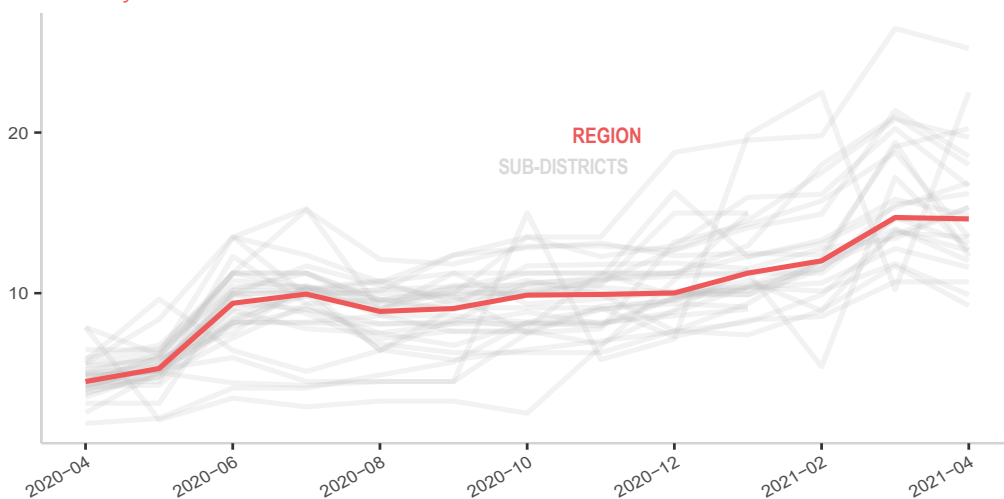
Sub-district	SMEB Water Truck	One month change	Six month change	Sub-district	SMEB Water Truck	One month change	Six month change
Northwest Syria	14,625	-1%	48%	Harim**	NA	NA	NA
Aghtrin	14,625	0%	30%	Idleb	25,245	-5%	87%
Al Bab	18,518	-13%	43%	Janudiyeh	13,500	-28%	80%
Ariha	10,710	0%	18%	Jarablus	20,250	6%	58%
Armanaz	15,345	14%	101%	Jisr-Ash-Shugur	16,200	4%	64%
Ar-Ra'ee	12,015	-14%	20%	Kafr Takharim	12,688	-26%	67%
Atareb	9,900	-16%	22%	Maaret Tamsrin	13,118	-11%	30%
A'zaz	15,341	12%	64%	Mare'	14,850	-6%	40%
Badama	12,285	-37%	14%	Mhambal	19,710	-5%	95%
Bennsh	9,225	-21%	46%	Qourqeena	22,500	120%	50%
Dana	11,610	-9%	32%	Salqin	16,875	10%	114%
Daret Azza	12,645	-9%	55%	Sarmin**	NA	NA	NA
Darkosh**	16,673	-18%	24%	Suran	18,000	-14%	83%
Ghandorah	14,625	0%	30%	Teftnaz	13,500	-2%	108%

* For these sub-districts, more than 50% of the SMEB food items median prices rely on less than 3 observations.

** For these sub-districts, all of the SMEB food items median prices rely on less than 3 observations.

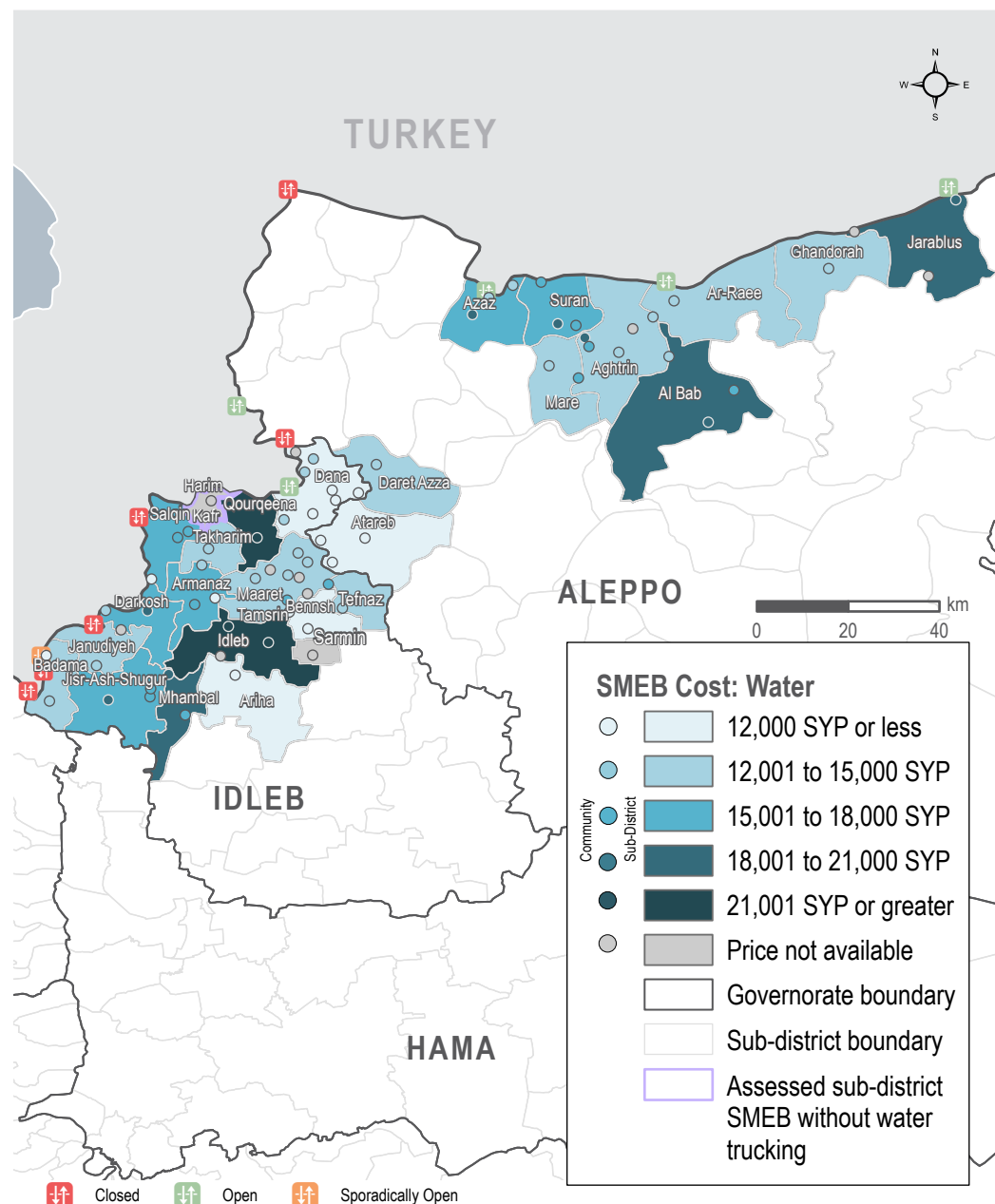
MEDIAN SMEB WATER TRUCKING COSTS, BY MONTH

Thousand Syrian Pounds



SMEB WATER TRUCKING COST

Sub-districts & Communities, Syrian Pounds



NORTHWEST SYRIA - SMEB HYGIENE ITEMS

MEDIAN SMEB HYGIENE ITEMS' PRICE

12 bars of soap, 4 packs of 10 sanitary pads, 200g of toothpaste, 3kg of laundry/dish soap, Syrian Pounds

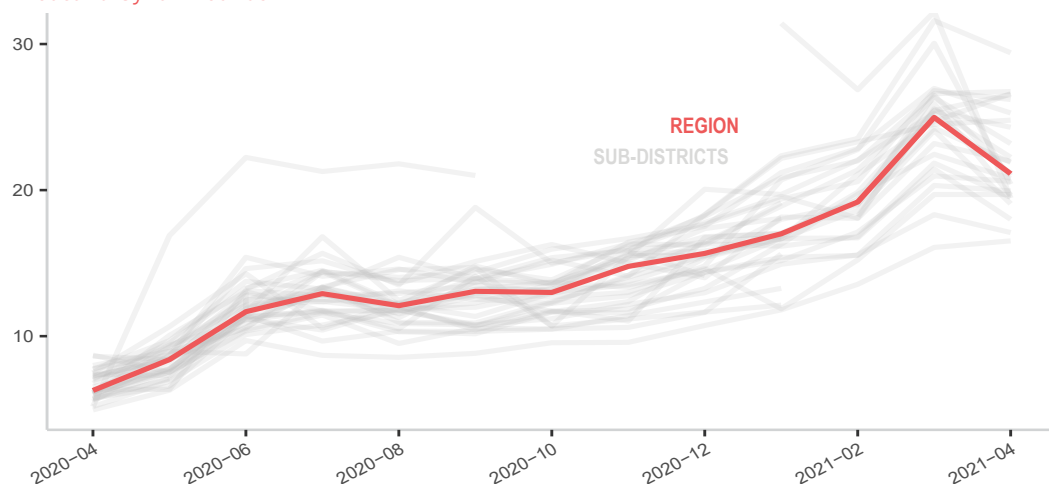
Sub-district	SMEB Hygiene Items	One month change	Six month change	Sub-district	SMEB Hygiene Items	One month change	Six month change
Northwest Syria	21,120	-15%	61%	Harim	26,600	8%	95%
Aghtrin	16,525	3%	73%	Idleb	19,500	-11%	48%
Al Bab	19,945	-2%	63%	Janudiyeh**	26,550	4%	NA
Ariha	29,400	-7%	93%	Jarablus	20,597	-2%	77%
Armanaz	23,183	-12%	89%	Jisr-Ash-Shugur	21,120	-16%	97%
Ar-Ra'ee	19,068	-21%	47%	Kafr Takharim	21,000	-21%	54%
Atareb	19,453	-40%	NA	Maaret Tamsrin	24,300	-4%	84%
A'zaz	19,700	0%	44%	Mare'	21,900	-10%	69%
Badama	26,200	-2%	64%	Mhambal	17,096	-7%	53%
Bennsh	21,973	-5%	35%	Qourqeena	26,750	1%	93%
Dana	25,280	-6%	87%	Salqin	19,650	-24%	67%
Daret Azza	24,788	1%	61%	Sarmin**	21,417	NA	NA
Darkosh	20,400	-32%	61%	Suran	20,790	-7%	78%
Ghandorah	18,000	-16%	54%				

* For these sub-districts, more than 50% of the SMEB food items median prices rely on less than 3 observations.

** For these sub-districts, all of the SMEB food items median prices rely on less than 3 observations.

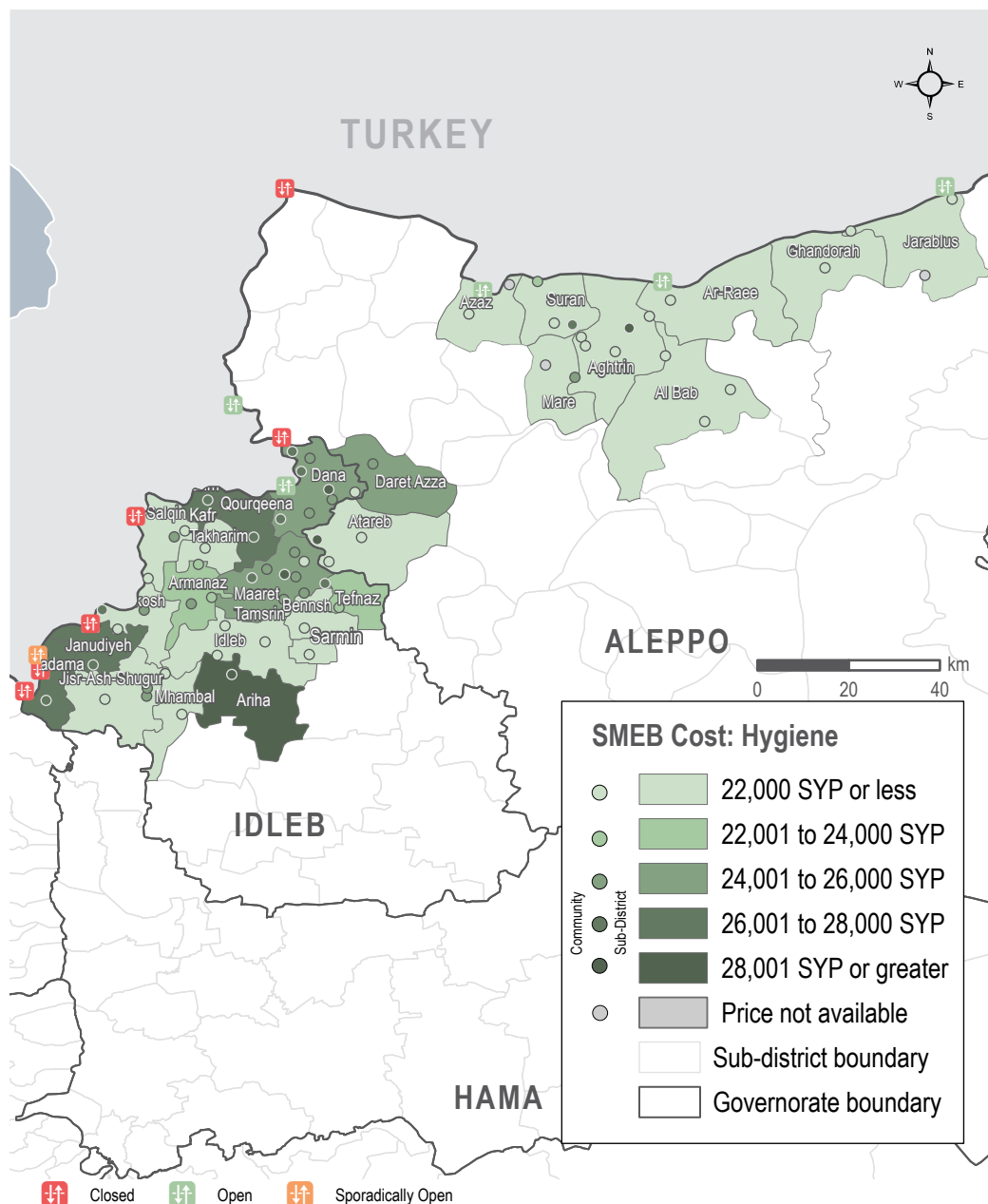
MEDIAN SMEB HYGIENE ITEMS' COSTS, BY MONTH

Thousand Syrian Pounds



SMEB HYGIENE ITEMS' COST

Sub-districts & Communities, Syrian Pounds



NORTHWEST SYRIA - SMEB CELLPHONE DATA

MEDIAN SMEB CELLPHONE DATA PRICE

1GB data, Syrian Pounds

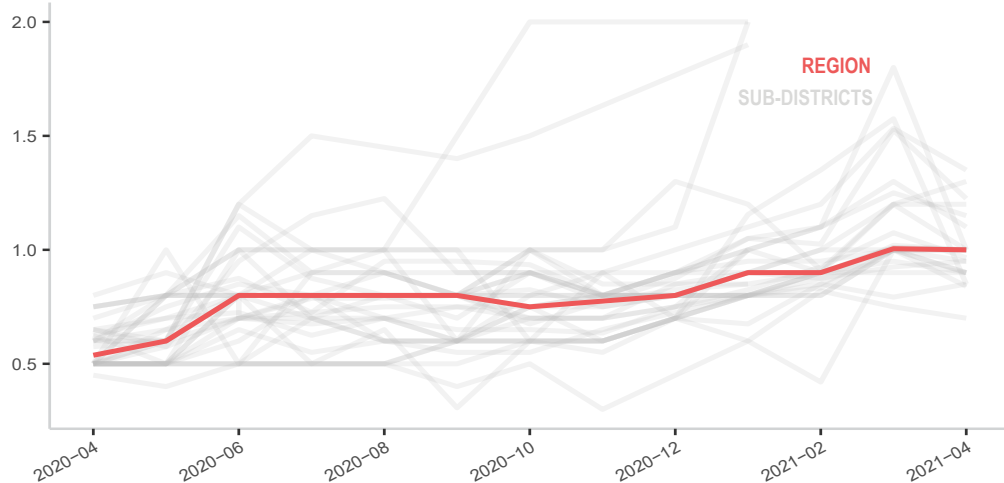
Sub-district	SMEB Data (1GB)	One month change	Six month change	Sub-district	SMEB Data (1GB)	One month change	Six month change
Northwest Syria	1,000	0%	33%	Harim	1,200	0%	33%
Aghtrin	1,000	0%	25%	Idleb	1,000	0%	67%
Al Bab	900	0%	29%	Janudiyeh	1,000	-17%	25%
Ariha	700	-7%	-7%	Jarablus	1,100	-15%	38%
Armanaz	900	-10%	9%	Jisr-Ash-Shugur	1,000	-1%	11%
Ar-Ra'ee	900	-10%	20%	Kafr Takharim	1,225	-20%	36%
Atareb	850	-46%	42%	Maaret Tamsrin	1,000	-1%	33%
A'zaz	1,000	-44%	7%	Mare'	950	3%	6%
Badama	900	-5%	29%	Mhambal	950	-5%	58%
Bennsh	850	7%	42%	Qourqeena	965	-10%	48%
Dana	1,000	0%	33%	Salqin	1,000	0%	43%
Daret Azza	1,350	-12%	50%	Sarmin**	800	NA	NA
Darkosh	1,000	-2%	67%	Suran	1,300	8%	30%
Ghandorah	1,150	-8%	15%	Teftnaz	840	-16%	68%

* For these sub-districts, more than 50% of the SMEB food items median prices rely on less than 3 observations.

** For these sub-districts, all of the SMEB food items median prices rely on less than 3 observations.

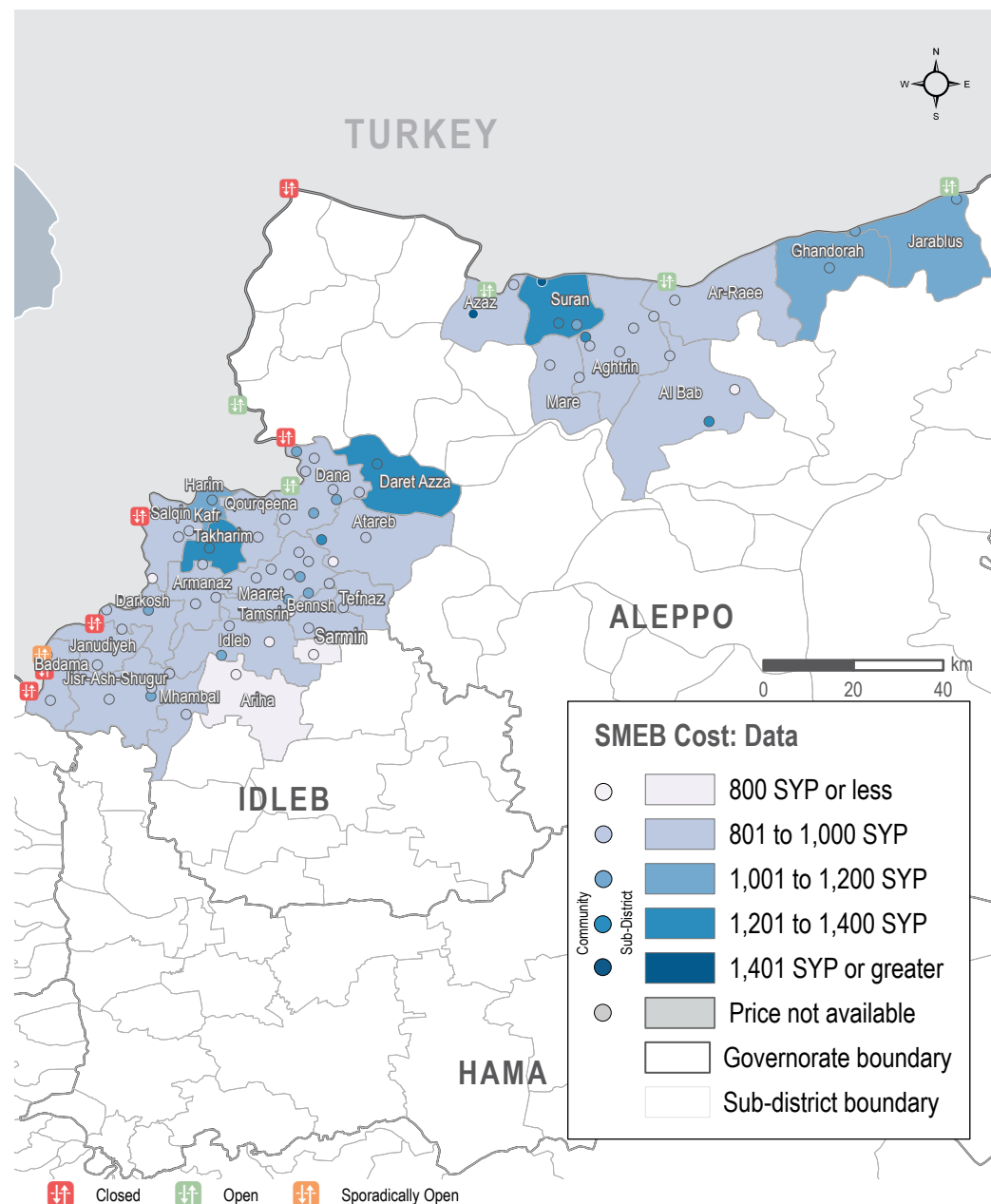
MEDIAN SMEB CELLPHONE DATA COST, BY MONTH

Thousand Syrian Pounds



SMEB CELLPHONE DATA COST

Sub-districts & Communities, Syrian Pounds



NORTHWEST SYRIA - SMEB COOKING FUEL

MEDIAN SMEB COOKING FUEL PRICE

Kerosene 25L and LPG 20L, Syrian Pounds

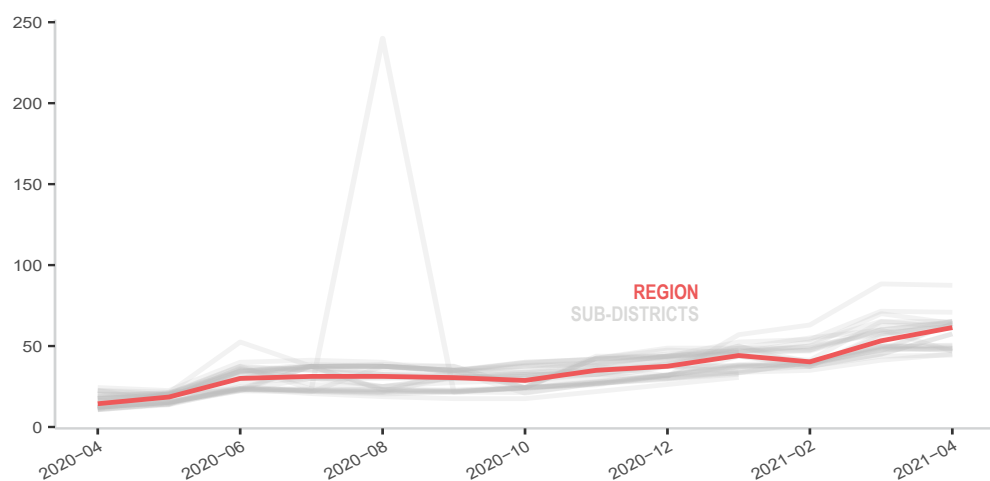
Sub-district	SMEB Cooking Fuel	One month change	Six month change	Sub-district	SMEB Cooking Fuel	One month change	Six month change
Northwest Syria	61,406	15%	109%	Harim	62,500	9%	156%
Aghtrin	62,500	9%	84%	Idleb	87,500	-1%	259%
Al Bab	65,250	0%	116%	Janudiyeh*	48,125	0%	97%
Ariha*	48,250	1%	97%	Jarablus	57,500	28%	77%
Armanaz	70,875	-1%	86%	Jisr-Ash-Shugur	65,000	8%	167%
Ar-Ra'ee*	44,375	1%	54%	Kafr Takharim*	47,031	-5%	40%
Atareb*	61,563	-6%	89%	Maaret Tamsrin	63,750	2%	62%
A'zaz	45,000	9%	60%	Mare**	50,000	0%	67%
Badama	65,000	8%	63%	Mhambal*	50,534	2%	107%
Bennsh	63,750	33%	165%	Qourqeena	61,250	4%	155%
Dana	64,063	-8%	71%	Salqin*	46,875	-22%	25%
Daret Azza*	48,938	-3%	104%	Sarmin**	NA	NA	NA
Darkosh*	48,500	-1%	99%	Suran	65,250	16%	101%
Ghandorah	57,500	28%	84%	Teftnaz	63,750	35%	168%

* For these sub-districts, more than 50% of the cooking fuel median prices rely on less than 3 observations.

** For these sub-districts, all of the cooking fuel median prices rely on less than 3 observations.

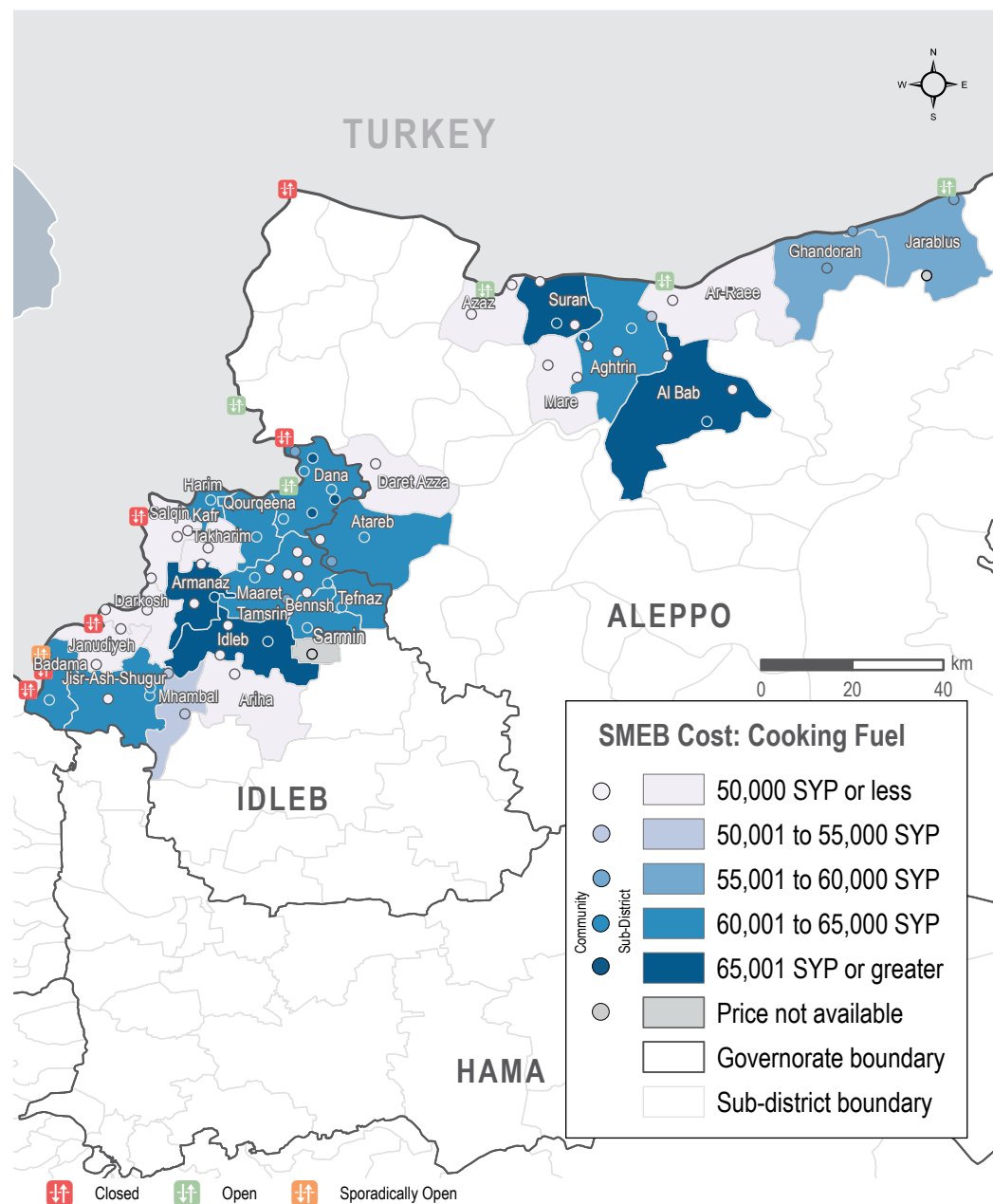
MEDIAN SMEB COOKING FUEL COSTS, BY MONTH

Thousand Syrian Pounds



SMEB COOKING FUEL COST

Sub-districts & Communities, Syrian Pounds



NORTHWEST SYRIA - TRANSPORT FUEL

MEDIAN TRANSPORT FUEL PRICE

Diesel and Petrol, 1L (High Quality and Manually Refined), Syrian Pounds

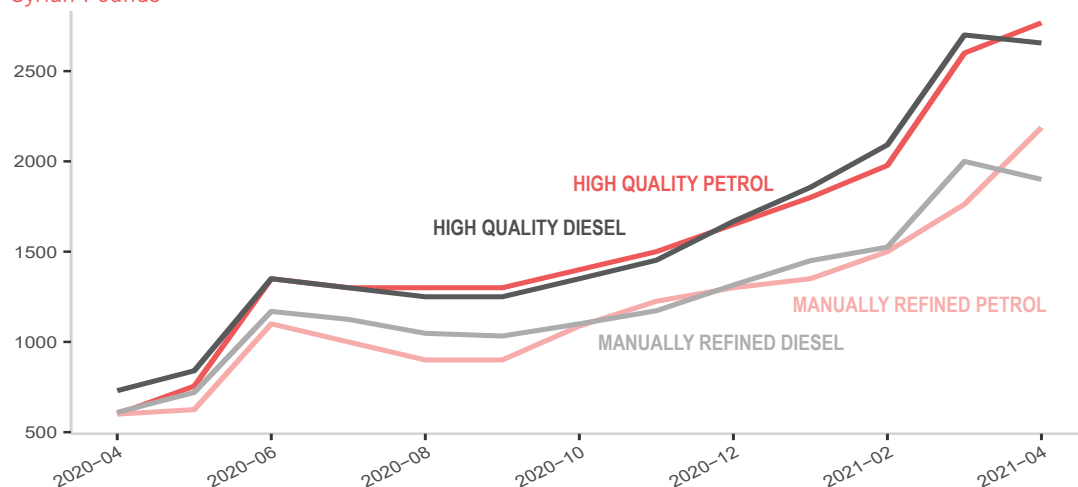
Sub-district	Transport Fuel	One month change	Six month change	Sub-district	Transport Fuel	One month change	Six month change
Northwest Syria	2,433	0%	87%	Harim	2,483	3%	93%
Aghtrn	2,250	7%	92%	Idleb	2,408	-1%	74%
Al Bab	2,313	8%	100%	Janudiyeh*	2,525	-5%	82%
Ariha*	2,730	7%	99%	Jarablus	2,463	11%	94%
Armanaz	2,497	1%	88%	Jisr-Ash-Shugur	2,454	0%	86%
Ar-Ra'ee	2,225	-1%	91%	Kafr Takharim	2,388	-2%	82%
Atareb	2,106	-17%	68%	Maaret Tamsrin	2,483	8%	91%
A'zaz	2,263	8%	93%	Mare'	2,367	-1%	97%
Badama	2,417	2%	83%	Mhambal	2,543	4%	95%
Bennsh	2,400	-2%	79%	Qourqeena	2,479	4%	87%
Dana	2,462	0%	81%	Salqin	2,367	-5%	79%
Daret Azza	2,467	-4%	99%	Sarmin**	NA	NA	NA
Darkosh	2,483	0%	97%	Suran	2,336	10%	96%
Ghandorah	2,450	11%	102%	Teftnaz	2,350	-1%	77%

* For this sub-district, more than 50% of the median prices for the items composing the transport fuel indicator rely on less than 3 observations

** For this sub-district, more than 100% of the median prices for the items composing the transport fuel indicator rely on less than 3 observations.

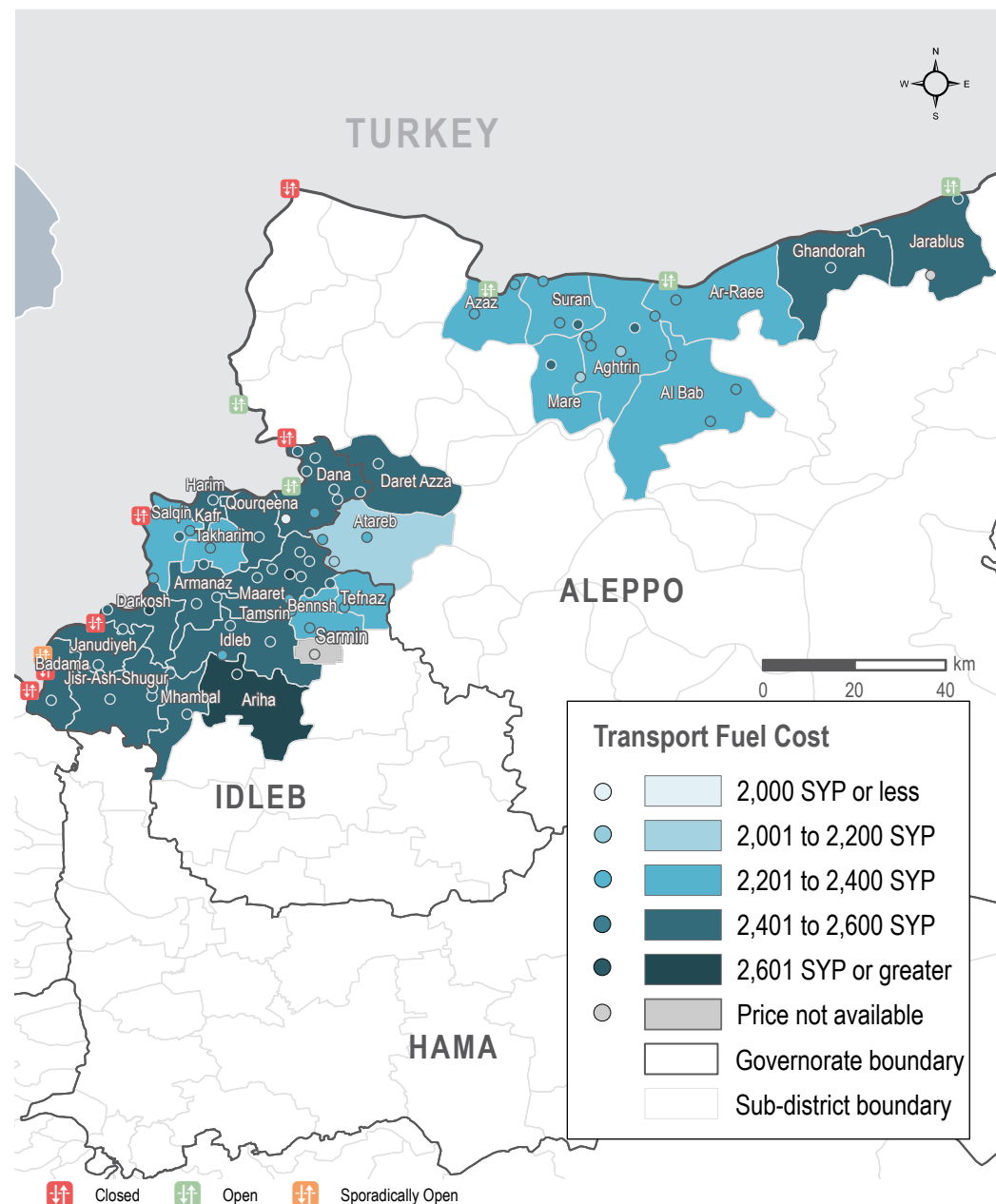
MEDIAN TRANSPORT FUEL COSTS, BY MONTH & TYPE

Syrian Pounds



TRANSPORT FUEL COST

Sub-districts & Communities, Syrian Pounds

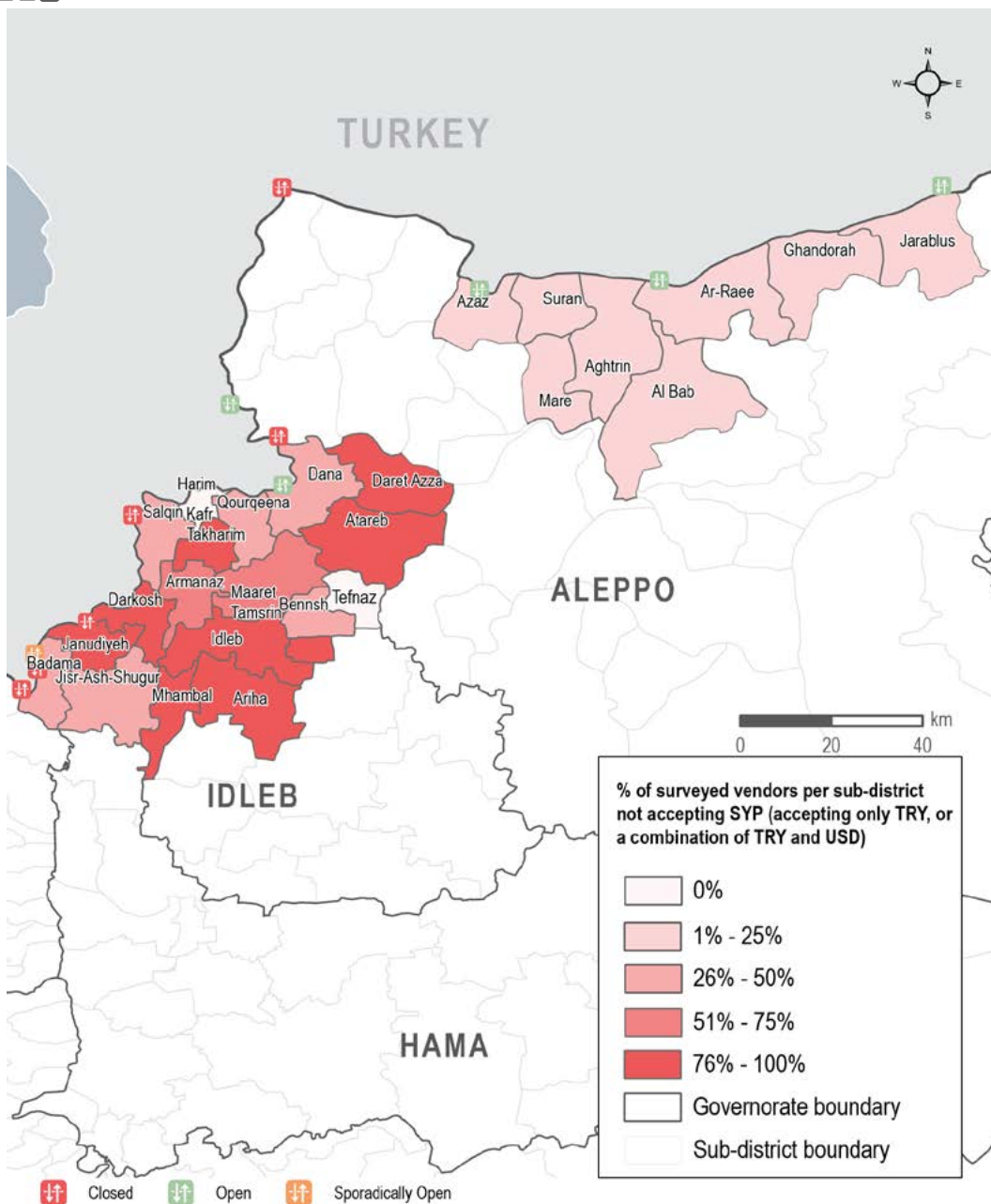


NORTHWEST SYRIA - MARKET FUNCTIONALITY



SURVEYED VENDORS NOT ACCEPTING SYRIAN POUNDS

Sub-districts



MARKET FUNCTIONALITY

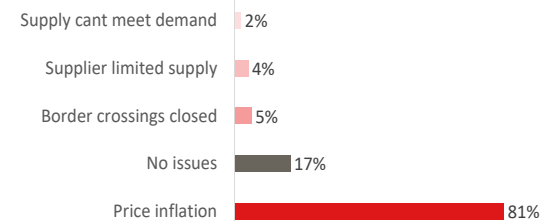
In April, 10 out of 1,909 surveyed vendors across NWS reported having closed their shops. 1 of these surveyed shops were in NW Aleppo, and the remaining 9 were reported in Idlib.



SUPPLY CHALLENGES

In April, 83% of vendors reported supply challenges. The primary supply challenge cited remained price inflation, reported by 81% of vendors across NWS. As a seemingly widespread supply challenge, price inflation issues may also impact vendors' abilities to keep markets stocked with essential items. The second issue cited was that supply had been affected by border closures, reported by 5% of surveyed vendors (see figure 1).

Figure 1: Most commonly reported supply challenges by all surveyed vendors (1,909 respondents)

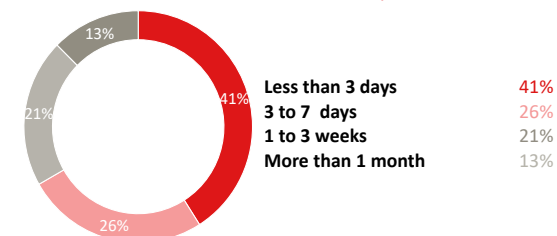


RESTOCKING

While supply challenges were reported, most vendors reported that they would be able to restock if they were to run out of supplies, with 0.2% - or 4 of the 1,903 total surveyed vendors - reporting that they would be unable to restock if they were to run out of supplies.

When asked after how many days they would hypothetically run out of stock if supplies were to be cut, 41% of surveyed vendors in NWS said that they would run out of supplies in less than 3 days and 26% said in 3 to 7 days (see figure 2). Across shop types, surveyed water trucking vendors (73%), vegetable vendors (71%) butchers (67%), and fuel vendors (48%) most commonly reported that they would run out in less than 3 days if unable to restock.

Figure 2: Reported number of days before all types of vendors would hypothetically run out of stock, if supply lines were to be cut (1,903 respondents)



AVAILABILITY OF USD BANKNOTES

In April, informal currency exchange vendors were also asked about their stock levels for USD banknotes of different denominations. Of the 197 surveyed informal exchange vendors who were asked if they had limited stock of any USD banknote denominations across NWS, 100% of surveyed vendors in Idlib governorate and 86% of surveyed vendors in Aleppo governorate reported having limited stock of one or more denominations.

Shortages of small banknotes were more commonly reported by surveyed vendors in Aleppo governorate, most frequently for 1 and 5 USD banknotes (reported by 55% of all surveyed vendors in Aleppo). Surveyed vendors in Idlib governorate reported that all denominations under 100 USD were in limited supply, ranging between 61-78% for 1 to 50 USD notes.



CURRENCIES ACCEPTED

Surveyed vendors were also asked about the type(s) of currencies they accepted in their shops. In April, 97% of surveyed vendors reported selling their goods not exclusively in SYP or not in SYP at all. Significant differences in currency usage between governorates were also noted; while 9% of surveyed vendors in Aleppo reported selling their goods in SYP only, no vendors in Idlib reported the same (0%). Surveyed vendors in Idlib, however, more commonly reported selling items in TRY only (reported by 47%), compared to only 17% of vendors in Aleppo who reported the same. Additionally, 11% of vendors in Idlib reporting accepting currency combinations that included the USD, compared to 5% of vendors in Aleppo. In Aleppo, vendors most commonly reported selling items in both SYP and TRY (60%), but vendors in Idlib most commonly reported selling items in TRY only (47%).

NORTHWEST SYRIA - COVID-19



MEDIAN PRICE OF COVID-19 ITEMS

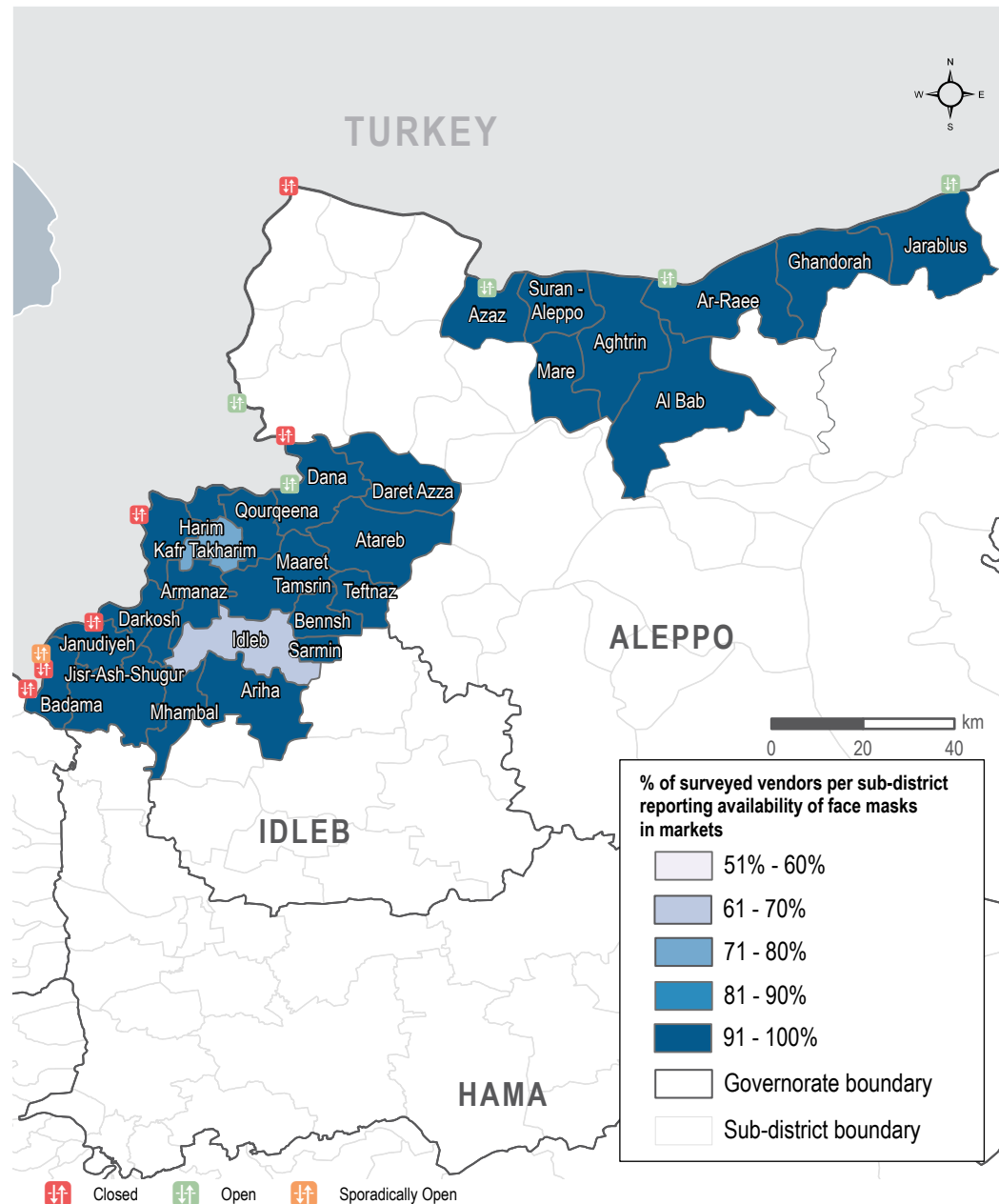
Syrian Pounds

Sub-district	Face mask (1 piece)	Plastic gloves (box of 100)	Sterile alcohol (1 litre)	Hand sanitiser (500 ml)	Bottled bleach (1 litre)	Trash bags (roll of 30)
Northwest Syria	430	23,500	8,500	4,500	1,800	3,625
Aghtrin	400	23,750	8,400	4,500	1,750	2,700
Al Bab	300	27,000	8,500	2,700	2,050	2,590
Ariha	450	23,100	NA	NA	2,225	NA
Armanaz	450	21,750	10,178	5,400	1,755	3,800
Ar-Ra'ee	250	22,500	8,500	2,525	2,000	2,600
Atareb	300	14,400	8,100	5,100	1,750	3,400
A'zaz	450	28,500	10,500	2,200	2,300	3,500
Badama	450	23,400	6,150	4,900	1,800	4,000
Bennsh	350	23,500	10,400	1,600	1,300	5,400
Dana	450	21,000	9,500	4,500	1,850	4,000
Daret Azza	450	25,500	7,700	3,800	1,800	3,000
Darkosh	400	22,800	9,900	7,000	1,800	4,000
Ghandorah	300	23,500	8,000	4,300	2,400	1,740
Harim	400	24,500	6,200	4,400	1,725	3,950
Idleb	430	13,600	8,250	6,550	1,600	3,600
Janudiyeh	600	22,000	7,000	5,500	1,775	4,000
Jarablus	300	23,800	8,500	4,500	1,900	2,040
Jisr-Ash-Shugur	450	24,500	9,000	5,450	1,800	4,000
Kafr Takharim	500	21,500	10,700	4,450	1,500	3,500
Maaret Tamsrin	400	24,000	6,500	5,000	1,850	3,900
Mare'	500	25,000	8,000	3,600	1,800	4,000
Mhambal	600	35,550	20,000	7,125	1,650	2,600
Qourqeena	450	25,150	7,600	4,600	2,500	3,650
Salqin	450	22,500	9,900	4,600	1,750	3,900
Sarmin	400	2,400	2,400	NA	900	3,200
Suran	300	27,000	8,500	2,700	2,165	3,320
Teftnaz	300	24,000	10,400	1,600	1,300	5,450



AVAILABILITY OF FACE MASKS

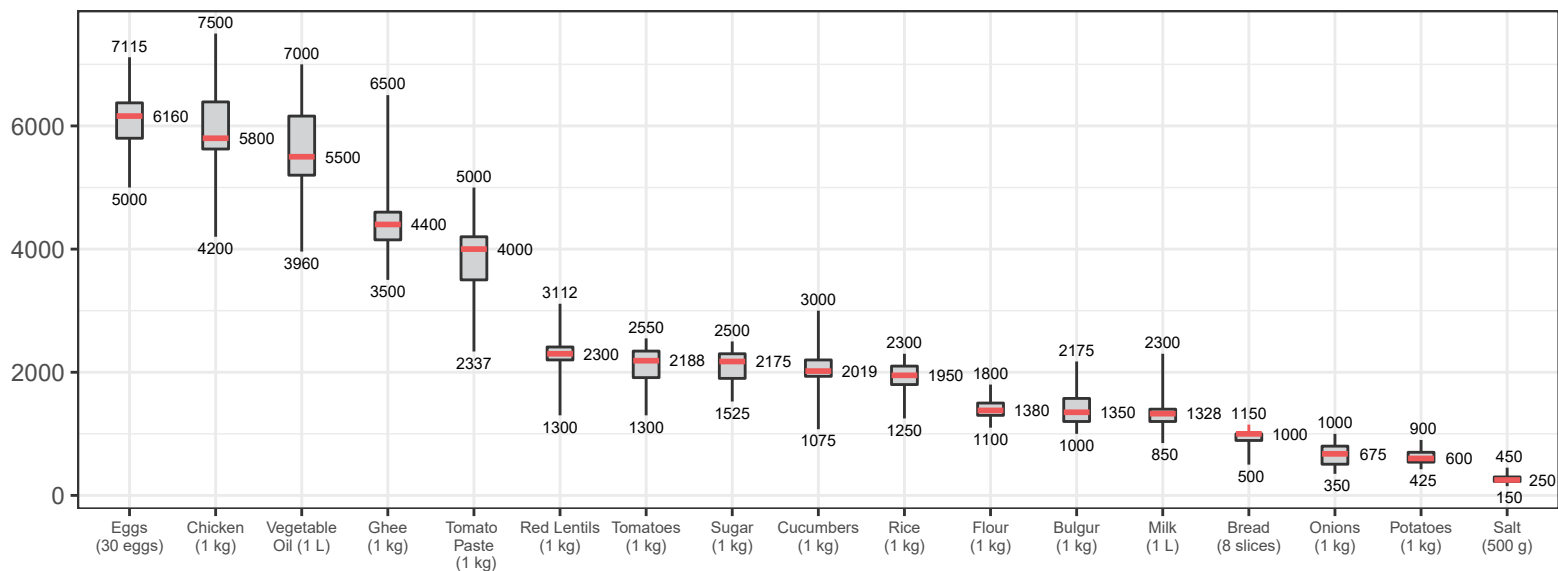
Sub-districts



NORTHWEST SYRIA - DISTRIBUTION OF PRICES

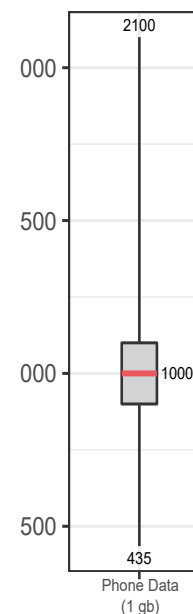
ASSESSED FOOD ITEMS

Syrian Pounds



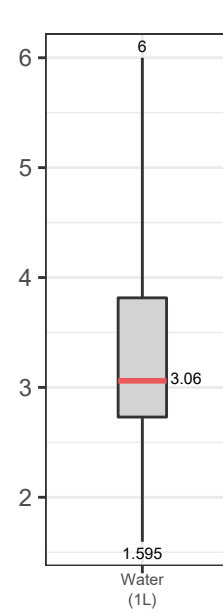
CELLPHONE DATA

Syrian Pounds



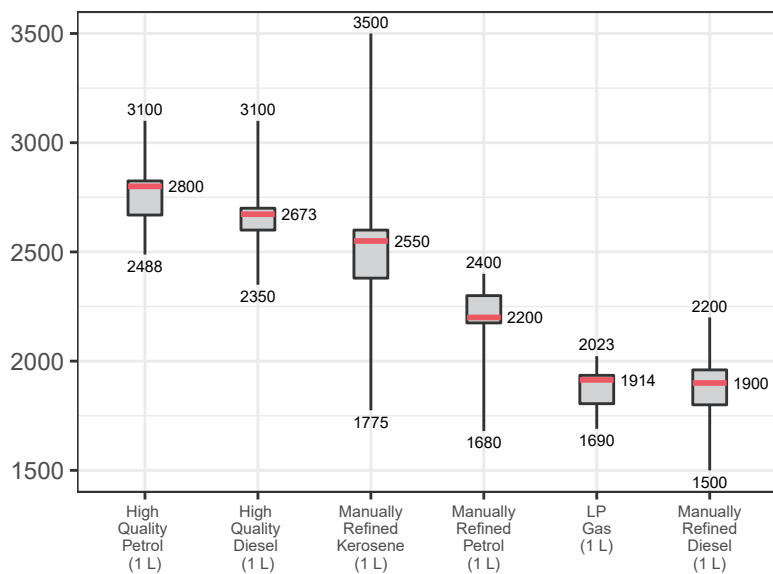
WATER TRUCKING

Syrian Pounds



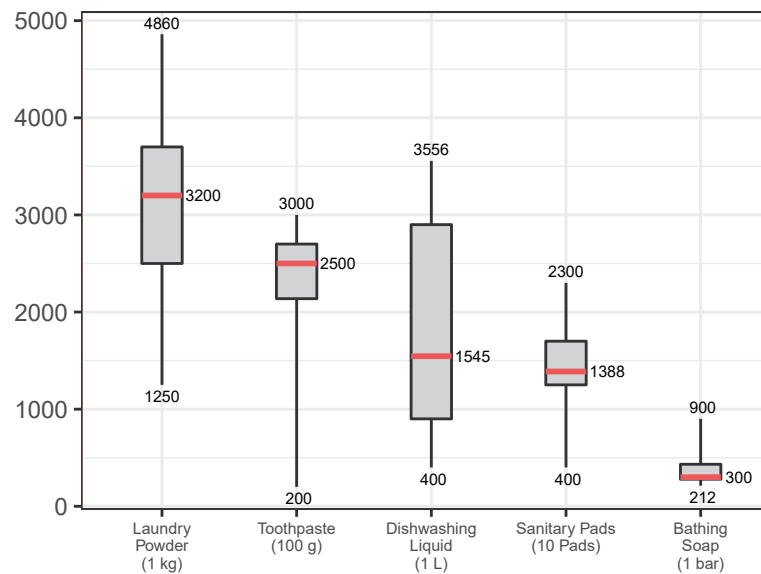
ASSESSED FUEL ITEMS

Syrian Pounds

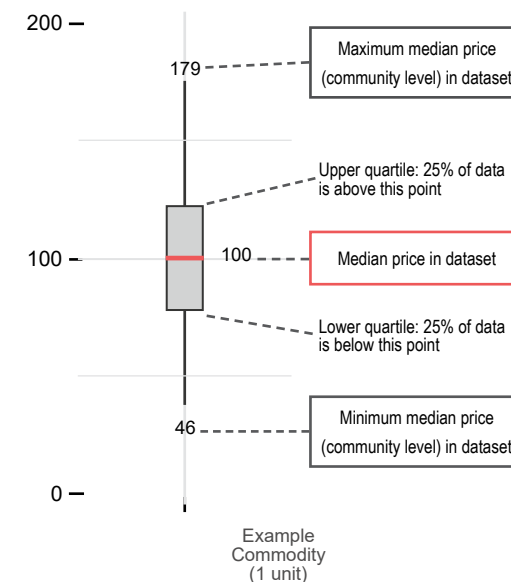


ASSESSED HYGIENE ITEMS

Syrian Pounds



READING BOXPLOTS



METHODOLOGY

In order to be included in the Syria Market Monitoring Exercise, markets must be permanent in nature, large enough to support at least two wholesalers, and diverse enough to provide a sufficient variety of goods and commodities. Additionally, the shops surveyed within each market must be housed in permanent structures and must sell certain items to be eligible for inclusion. Participating organisations train their enumerators on the Market Monitoring methodology and data collection tools using standard training materials developed by REACH. Each enumerator aims to assess three to five shops of each type in the main market in their assigned community/ neighbourhood, using surveys to collect information about the cheapest prices of each item and whether there are any barriers in the supply chain. In sub-districts where direct surveying by enumerators is not possible, data collection is conducted remotely through key informants such as shop owners, suppliers and consumers. A survey form is deployed on KoBo each month to capture price and stock information from different types of establishments, including grocery stores, fuel traders, currency exchange shops, water trucking services and mobile phone shops, among others. Nearly all participating partners submit their data to these KoBo forms, using the KoBoCollect Android app to upload data. A small number of partners, by prior permission, collect data using fully harmonised data collection tools deployed on other platforms, then submit their raw data to REACH for standardisation, compilation and cleaning.

Following data collection, REACH compiles and cleans all partners' data, normalising prices and cross-checking outliers. The cleaned data is then analysed by SMEB costs, components of the SMEB, and by commodities. These trends are observed at the sub-district-level and, when possible, at the community-level. Prices are divided into quartiles and boxplots are created

to assist CWG members in understanding the distribution of prices across the northeast and northwest of Syria. To illustrate local variations in prices and availability, REACH uses the collected data to map the price of the SMEB in each sub-district and adds illustrations of surrounding border crossings, with data sourced from the United Nations Office for the Coordination of Humanitarian Affairs (OCHA). In addition, each SMEB component costs and transport fuel prices are graphed to visualise trends over time.

The cleaned datasets are available on the [Humanitarian Data Exchange](#) website and the [REACH Resource Centre](#) and are distributed to all participating partners, as well as to interested clusters and the broader humanitarian community.

Calculating 'median cheapest price'

The regional figures are calculated by taking the median of the minimum-reported prices of a region's sub-districts. In turn, the sub-district medians are calculated using the Market Monitoring base-data.

Calculating Survival Minimum Expenditure Basket (SMEB) costs

The cost of a SMEB is calculated for each assessed sub-district by calculating the median cheapest price of each SMEB commodity in that sub-district, then multiplying these medians by the number of units that an average Syrian household requires to purchase in a month. The composition of the SMEB can be found on [page 1](#). SMEB vegetables include potatoes, tomatoes, onions, and cucumbers.

Calculating price trends over time

One month and six-month price changes and trends in this factsheet are calculated only with the comparable assessed communities of a sub-district with consistent coverage across months. On the other hand, in the dataset, medians are calculated taking all

assessed communities for the current month in consideration. Therefore, prices and percentage changes within the tables of this factsheet may slightly differ from the current month's dataset medians. In the narrative, both regional median SMEB values are shared; the SMEB value including all assessed communities that specific month, and the SMEB value only taking in consideration communities with consistent coverage since the previous month.

Changes to coverage

Given security and access constraints in the south of Syria, data collection has been unable to take place since July 2018. Escalation of conflict in October 2019 has resulted in limited coverage in northeast Syria in the months following the escalation.

Challenges and limitations

As the Syria Market Monitoring Exercise currently includes 26 partners based in 2 hubs, achieving a consistent approach is inherently challenging. Participating organisations are therefore requested to adopt harmonised data collection methodologies and tools to ensure that the data uploaded is as accurate as possible. Since this exercise collects data directly from vendors and relies on partner organisations for its wide coverage, Market Monitoring may sporadically lose coverage temporarily or for longer periods of time due to challenges in accessing locations or loss in the shared data collection capacity of the project. This impacts the ability to report on trends, as can be seen in the line graphs and 'NA' values in the tables.

ABOUT REACH

REACH Initiative facilitates the development of information tools and products that enhance the capacity of aid actors to make evidence-based decisions in emergency, recovery and development contexts. The methodologies used by REACH include primary data collection and in-depth analysis, and all activities are conducted through inter-agency aid coordination mechanisms. REACH is a joint initiative of IMPACT Initiatives, ACTED and the United Nations Institute for Training and Research - Operational Satellite Applications Programme (UNITAR-UNOSAT). For more information please visit our website:

www.reach-initiative.org. You can contact us directly at: geneva@reach-initiative.org and follow us on Twitter [@REACH_info](https://twitter.com/REACH_info)

ABOUT THE CASH WORKING GROUP

The Cash Working Group (CWG) was established in May 2014 to analyse the impact of the ongoing conflict on markets in Syria and guide the implementation of humanitarian cash and voucher programmes within those markets. REACH and the CWG have been partners on the Syria Market Monitoring Exercise since early 2015.

About REACH's COVID-19 response

As an initiative deployed in many vulnerable and crisis-affected countries, REACH is deeply concerned by the devastating impact the COVID-19 pandemic may have on the millions of affected people we seek to serve. REACH is currently working with Cash Working Groups and partners to scale up its programming in response to this pandemic, with the goal of identifying practical ways to inform humanitarian responses in the countries where we operate. COVID-19-relevant market monitoring and market assessments are a key area where REACH aims to leverage its existing expertise to help humanitarian actors understand the impact of changing restrictions on markets and trade. Updates regarding REACH's response to COVID-19 can be found in a [devoted thread](#) on the REACH website. Contact geneva@impact-initiatives.org for further information.