

Yemen Joint Market Monitoring Initiative

May 2021 Situation Overview

Governorates: 16
Districts: 58
Total key informants (KIs): 269



WASH Cluster
Water Sanitation Hygiene

CMWG

Intersector Cash
and Markets
Working Group

REACH

Informing
more effective
humanitarian action

Introduction

The Yemen Joint Market Monitoring Initiative (JMMI) was launched by REACH in collaboration with the Water, Sanitation, and Hygiene (WASH) Cluster and the Cash and Market Working Group (CMWG) to support humanitarian actors with the harmonization of price monitoring among all cash actors in Yemen. The JMMI incorporates information on market systems including price levels and supply chains. The basket of goods to be assessed includes ten non-food items (NFIs), such as fuel, water, and hygiene products, reflecting the programmatic areas of the WASH Cluster. The JMMI tracks all components of the WASH and Food Survival Minimum Expenditure Basket (SMEB) as well as other food and non-food items. In light of the current COVID-19 pandemic, REACH has adapted the JMMI to begin assessing the potential impact of the pandemic on markets and on respondents' businesses.

Methodology

Data was collected through interviews with vendor key informants (KIs), selected by partner organisations from markets of various sizes in both urban and rural areas. Following data collection, REACH compiles, cleans and analyzes all data, through detailed follow-ups with partners. Findings are **indicative** for the assessed locations and time frame in which the data was collected. From April to September 2020, data for the JMMI was collected on a bi-weekly basis to better track disruptions caused by COVID-19. COVID-specific JMMI factsheets were produced bi-weekly, and a more comprehensive situation overview using data from both factsheets was produced monthly. After discussion with the CMWG, REACH resumed data collection on a monthly basis in September, and resumed producing one monthly situation overview. Please refer to the [appendix](#) for additional methodological details.

JMMI monthly figures

Data collection **2 May - 6 May**

15 Participating partners
16 Governorates assessed
58 Districts assessed
269 Vendor KIs surveyed

Assessed items	April 2021 prices in YER	May 2021 prices in YER	Change (from April 2021)
Full SMEB* (dry beans)	69178	70065	1.3%
WASH SMEB**	15658	15695	0.2%
Soap (100g)	200	200	0.0%
Laundry powder (100g)	142	136	-4.2%
Sanitary napkins (10 Pack)	600	600	0.0%
Water trucking (1m ³)	2450	2500	2.0%
Petrol (1L)	600	600	0.0%
Diesel (1L)	650	630	-3.1%
Bottled water (0.75L)	150	150	0.0%
Treated water (10L)	110	100	-9.1%
Bleach (1L)	867	900	3.8%
Cooking gas (1cylinder)	6000	5500	-8.3%
Food SMEB (dry beans)^	53520	54370	1.6%
Food SMEB (canned beans)§	57020	58770	3.1%
Wheat flour (1 kg)	440	440	0.0%
Rice (1 kg)	900	900	0.0%
Dry kidney beans (1 kg)	1000	1000	0.0%
Canned kidney beans (15 oz can)	375	400	6.7%
Lentils (1 kg)	800	800	0.0%
Vegetable oil (1L)	1155	1250	8.2%
Sugar (1 kg)	460	495	7.6%
Salt (1 kg)	130	125	-3.8%
Potatoes (1 kg)	500	500	0.0%
Onions (1 kg)	400	400	0.0%

* Includes WASH and food SMEB; excludes cooking gas, NFI/Shelter and Services.

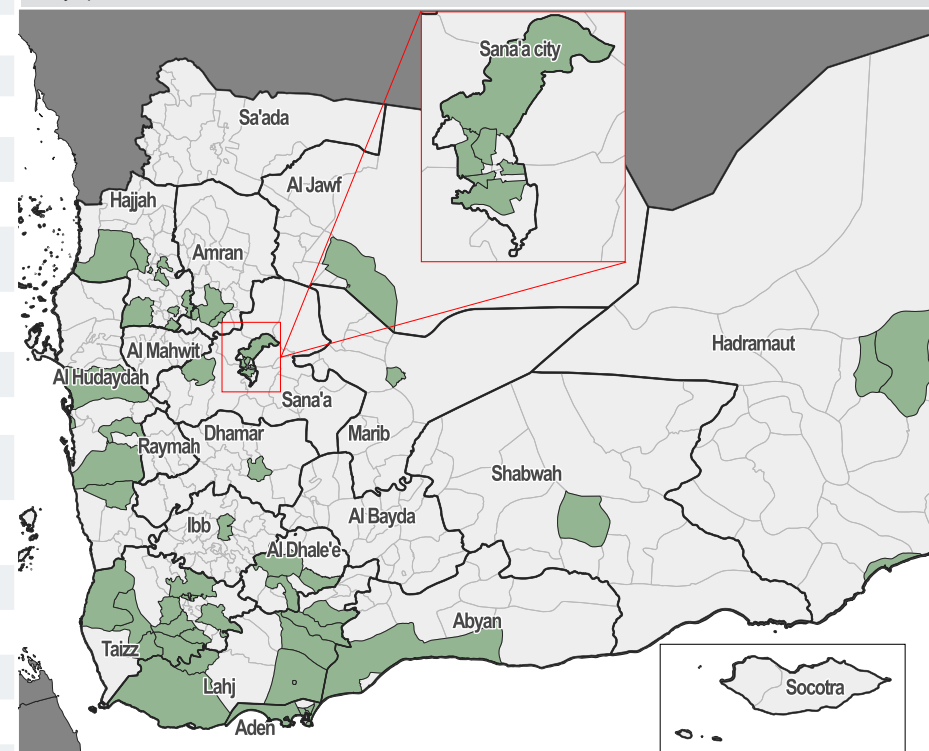
** Contains soap (1.05 kg), laundry powder (2 kg), sanitary napkins (50 units), and water (3.15 m³). Sanitary napkins' units were changed from 20 to 50 based on CMWG's September SMEB revision.

^ Contains wheat flour (75 kg), dry beans (10 kg), vegetable oil (8 L), sugar (2.5 kg), salt (1 kg)

§ Contains wheat flour (75 kg), canned beans (36 cans), vegetable oil (8 L), sugar (2.5 kg), salt (1 kg)

Key findings

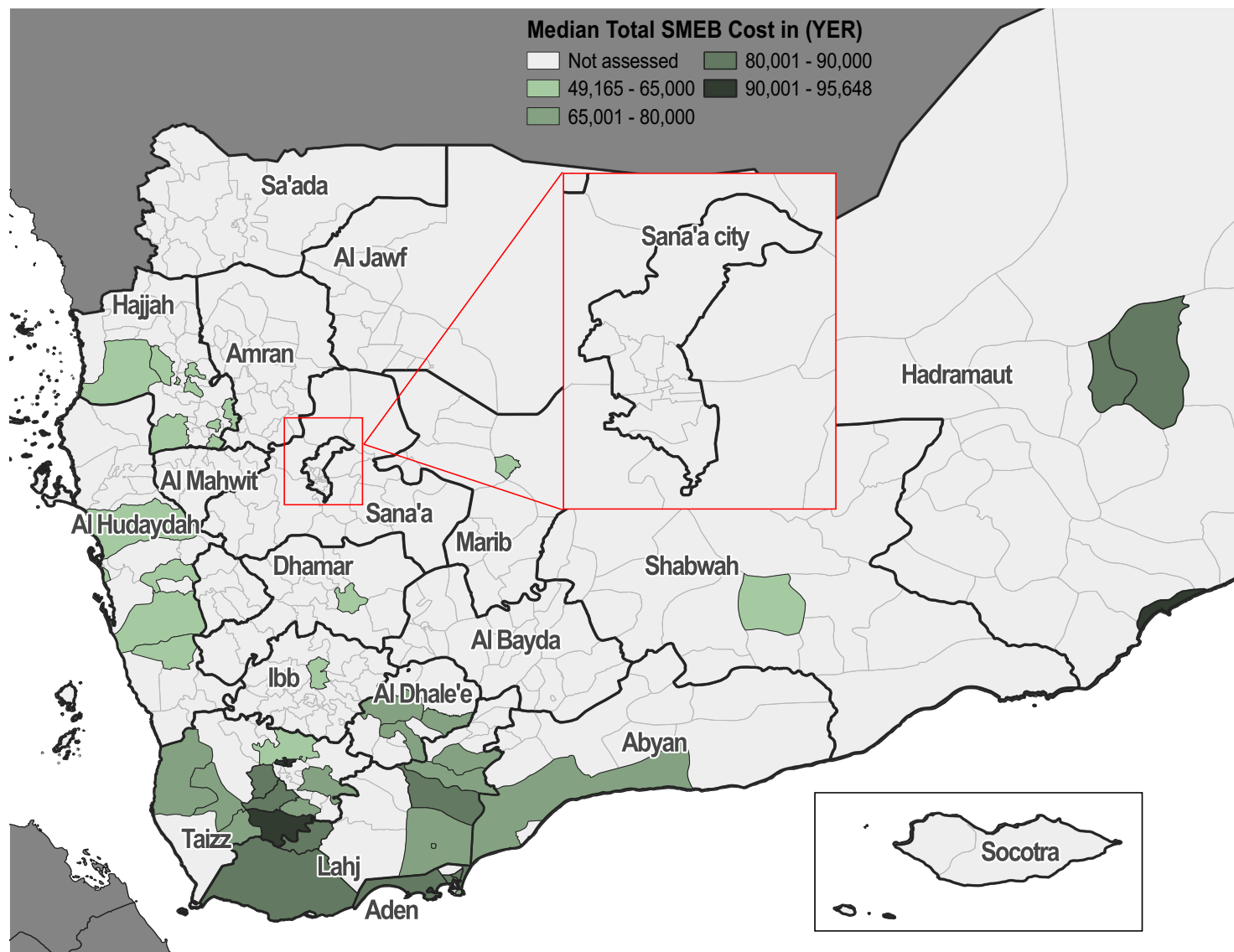
- Overall, exchange rates have slightly increased between April 2021 and May 2021. However, The median national exchange rate remained stable with 597 Yemeni Riyal (YER) to one US dollar (USD). The lowest exchange rate was recorded in Al Hudaydah (593 YER to 1 USD). The highest exchange rate was recorded in Shabwah (900 YER to 1 USD), followed by Hadramaut governorate (896 YER to 1 USD).
- The average reported restocking time increased for all assessed items, after a decrease was observed in the last round of data collection in April.
- The reported total number of business closed in the last 2 weeks within a 2 minute walk from KIs' stalls increased to reach 135 markets compared to last round in April with a total of 82 businesses reported to be closed around the assessed markets.
- Price inflation remains the most commonly reported constraint faced by the assessed vendors when obtaining fuel, WASH items, food items, and water trucking services.
- The food SMEB cost (with dry beans) was found to have increased by 1.6% since the last round of data collection in April, and the WASH SMEB cost increased by 0.2% since last round, contributing to a 1.3% increase in the overall SMEB cost.
- Overall, 14% of KIs reported that their supply routes changed in a way harmful to their business in the 30 days prior to data collection.



Exchange Rate

250 ► 0.0% USD/YER Official	595 ► 0.0% USD/YER Parallel market (in DFA) rate May 2021	597 USD/YER Parallel Market rate (in DFA) April 2021	890 ▲ 1.0% USD/YER Parallel market (in IRG) rate May 2021	885 USD/YER Parallel Market rate (in IRG) April 2021
--------------------------------------	---	--	---	--

Total SMEB prices (2-6 May 2021)*,^



*Total SMEB cost in the legend represents the calculated food basket cost with dry beans.

^ Red outlines over districts indicate the districts for which outliers were recorded.

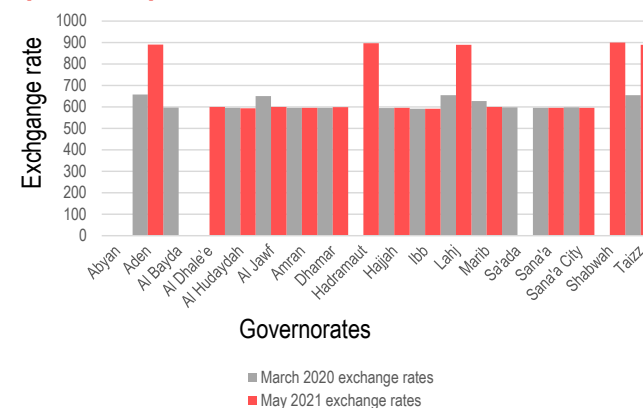
Exchange rate (YER/USD)*

Governorate	March 2020 [^]	April 2021	May 2021
Abyan	NA	(858)	(890)
Aden	658	863	891
Al Bayda	596	NA	NA
Al Dhale'e	NA	600 (855)	600 (895)
Al Hudaydah	595	595 (728)	593
Al Jawf	650	600	600
Amran	595	597	595
Dhamar	595	600	599
Hadramaut	NA	843	896
Hajjah	594	595	596
Ibb	592	598	591
Lahj	654	860	889
Marib	628	600	600
Sa'ada	598	NA	NA
Sana'a	595	595	595
Sana'a City	598 (628)	597	595
Shabwah	NA	900	900
Taizz	654	850	890

*New banknote exchange rates / Exchange rate for the new currency released last year is in parenthesis.

[^]March was chosen as a baseline to assess the effect of COVID-19 on exchange rates.

Exchange rate in March 2020 and May 2021 (YER/USD)*



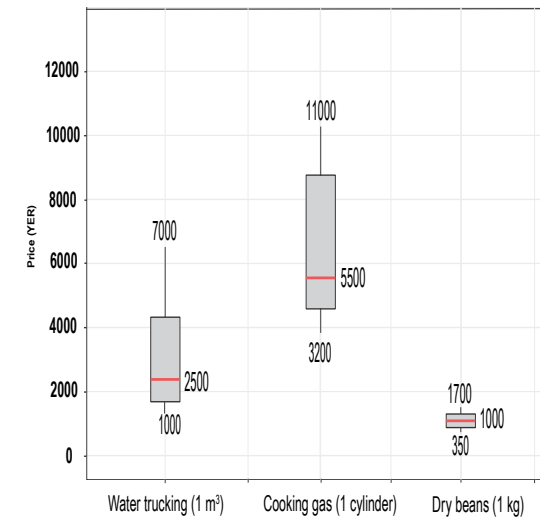
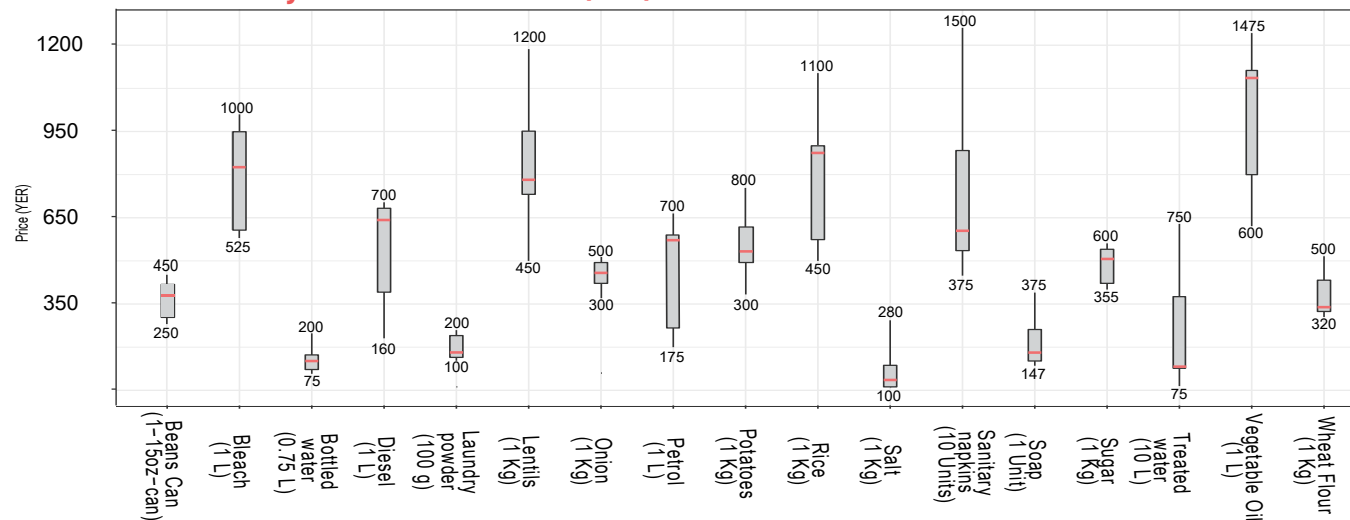
*Governorate labels point to two bars indicating March 2020 base values and May 2021 values. Gaps between bars indicates that no exchange rate value was recorded in this governorate.

Price per key item, per governorate (YER)*

Governorate	Petrol (1L)	Diesel (1L)	Cooking gas (1 cylinder)	Bottled water (0.75L)	Treated water (10L)	Soap (100g)	Laundry powder (100g)	Sanitary napkins (10 units)	Bleach (1L)	Water trucking (1m³)	WASH SMEB	Wheat flour (1Kg)	Rice (1Kg)	Beans dry (1Kg)	Beans cans (15oz)	Lentils (1 Kg)	Vegetable oil (1L)	Sugar (1Kg)	Salt (1Kg)	Potatoes (1Kg)	Onions (1 Kg)	Food SMEB (Dry Beans)	Food SMEB (Canned beans)
Abyan	600	610	4500	100	100	263	100	700	1000	2000	14562	500	1000	1000	410	NA	1200	600	100	500	500	58700	63460
Aden	535	650	8000	200	200	250	150	700	1000	7000	31175	500	1100	900	450	1200	1300	500	200	600	400	58350	65550
Al Dhale'e	600	625	7000	165	200	155	160	700	917	5000	24078	448	1000	1000	400	800	1475	500	100	800	500	56750	61150
Al Hudaydah	650	650	11000	150	75	150	120	500	650	2000	12775	320	900	425	300	450	650	400	200	400	300	34650	41200
Al Jawf	700	665	6000	200	NA	250	160	1500	800	2000	19625	280	550	NA	350	NA	1200	530	120	500	400	NA	44645
Amran	550	NA	NA	120	120	150	120	500	700	1792	12118	350	600	NA	300	700	1000	400	150	400	350	NA	46200
Dhamar	650	625	6500	150	600	188	120	600	800	1500	12099	270	790	1000	300	750	1200	400	100	450	300	40950	41750
Hadramaut	500	500	3500	150	750	375	120	800	1000	5000	26088	420	770	1400	420	1200	1350	540	250	500	600	57900	59020
Hajjah	650	650	7500	150	100	175	125	500	950	3000	16288	350	800	750	300	800	1000	400	100	400	400	42850	46150
Ibb	575	700	5000	150	100	200	130	600	900	3000	17150	400	700	1000	275	800	600	500	100	300	300	46150	46050
Lahj	600	600	7000	175	100	300	142	800	975	2000	16290	450	1078	1600	450	1200	1400	500	125	600	400	62325	62525
Marib	175	160	3200	75	100	160	180	650	1000	1000	11680	360	600	1000	300	NA	1250	500	150	500	500	48400	49200
Sana'a	NA	NA	5000	120	200	200	109	500	800	1400	11190	350	450	NA	300	500	1013	400	150	400	300	NA	46304
Sana'a City	700	800	5000	100	120	147	105	500	525	1400	10538	325	900	NA	350	550	825	355	280	350	250	NA	44743
Shabwah	550	600	4500	125	125	150	200	375	600	2600	15640	450	500	350	350	500	650	450	150	500	500	43725	52825
Taizz	615	650	5000	200	100	200	150	700	917	3000	18050	500	1000	1700	438	1000	1475	520	150	700	400	67750	66518
National median price	600	630	5500	150	100	200	136	600	900	2500	15695	440	900	1000	400	800	1250	495	133	500	400	54370	58770

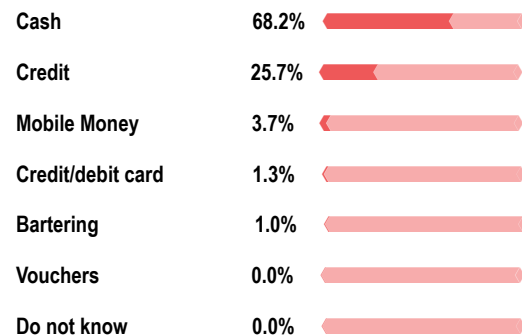
*Darker color strokes indicate high outliers for each commodity, lighter color strokes indicate the low outliers of each commodity.

Price distribution of key items across Yemen (YER)



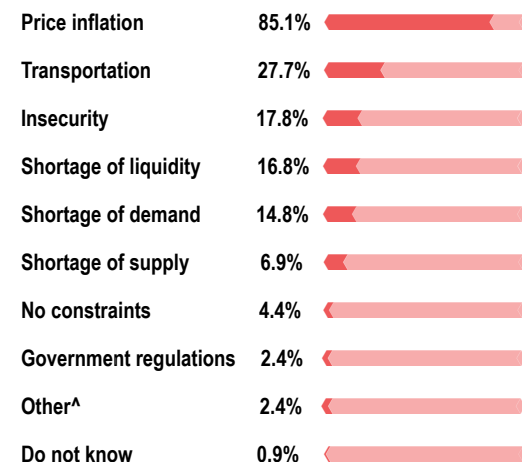
WASH SMEB*

WASH vendor KIs reported accepting the following payment modalities*



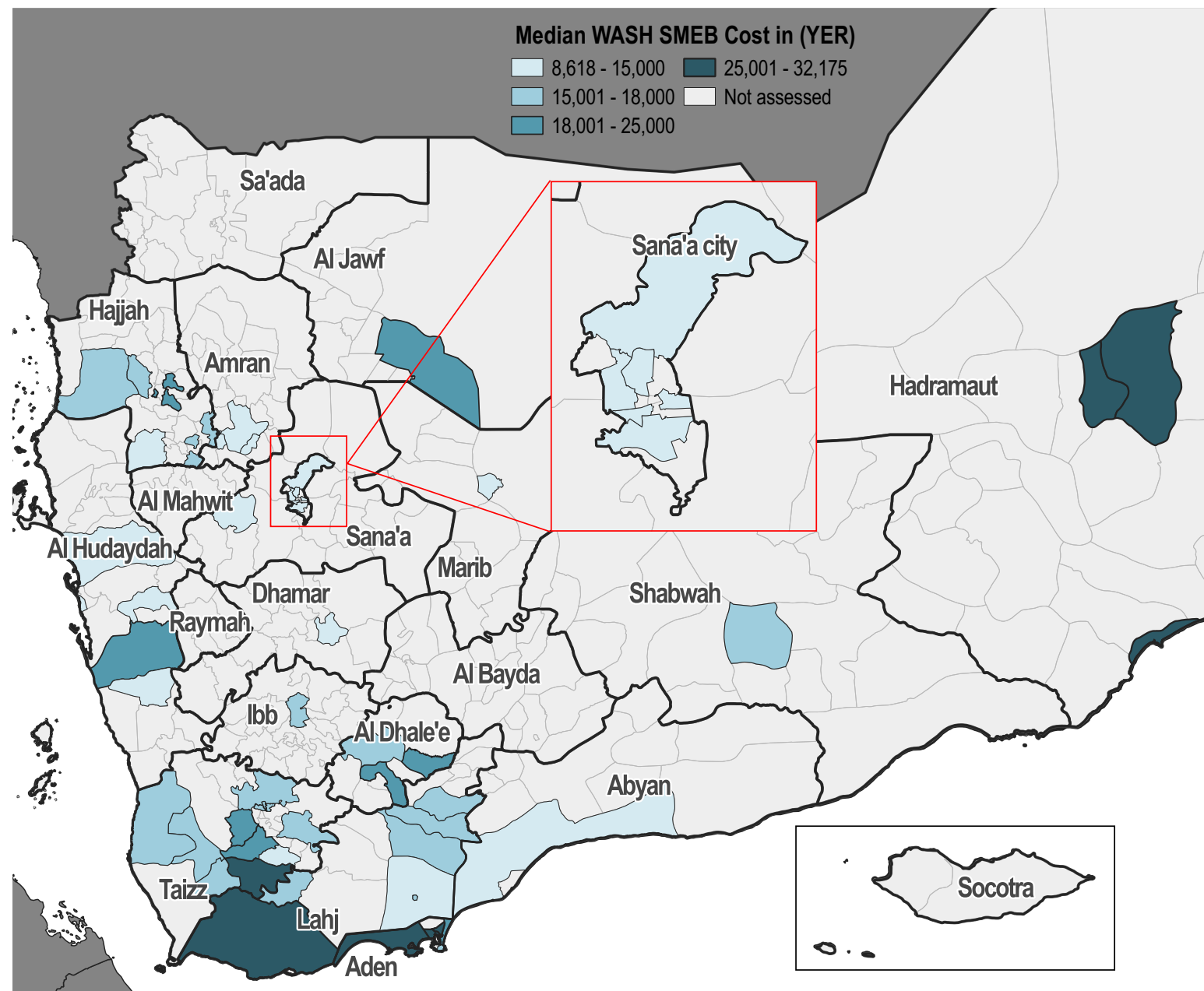
*Values do not add up to 100% as vendor KIs were allowed to select multiple options.

Most commonly reported constraints, by % of WASH vendor KIs*



*Values do not add up to 100% as vendor KIs were allowed to select multiple options.

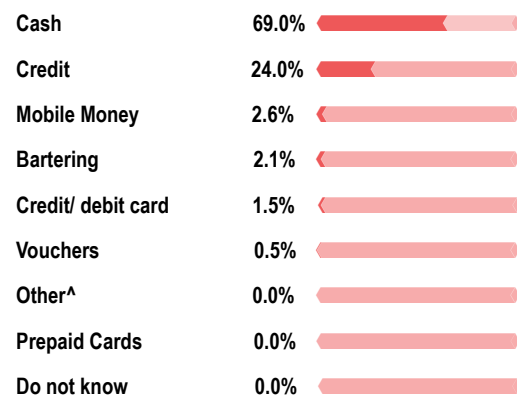
^Includes increased currency fluctuations, loss of vendors in the area, and additional fees.



*Red outlines over districts indicate the districts for which outliers were recorded.

Food SMEB*

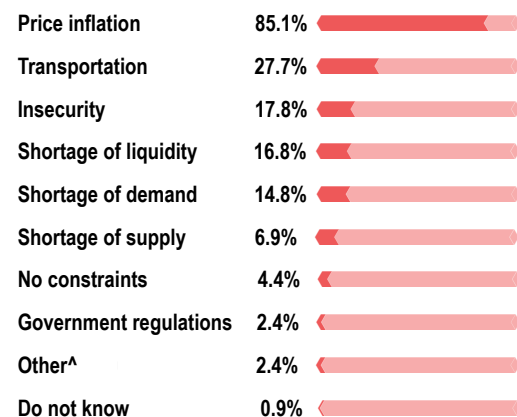
Food vendor KIs reported accepting the following payment modalities*



*Values do not add up to 100% as vendor KIs were allowed to select multiple options.

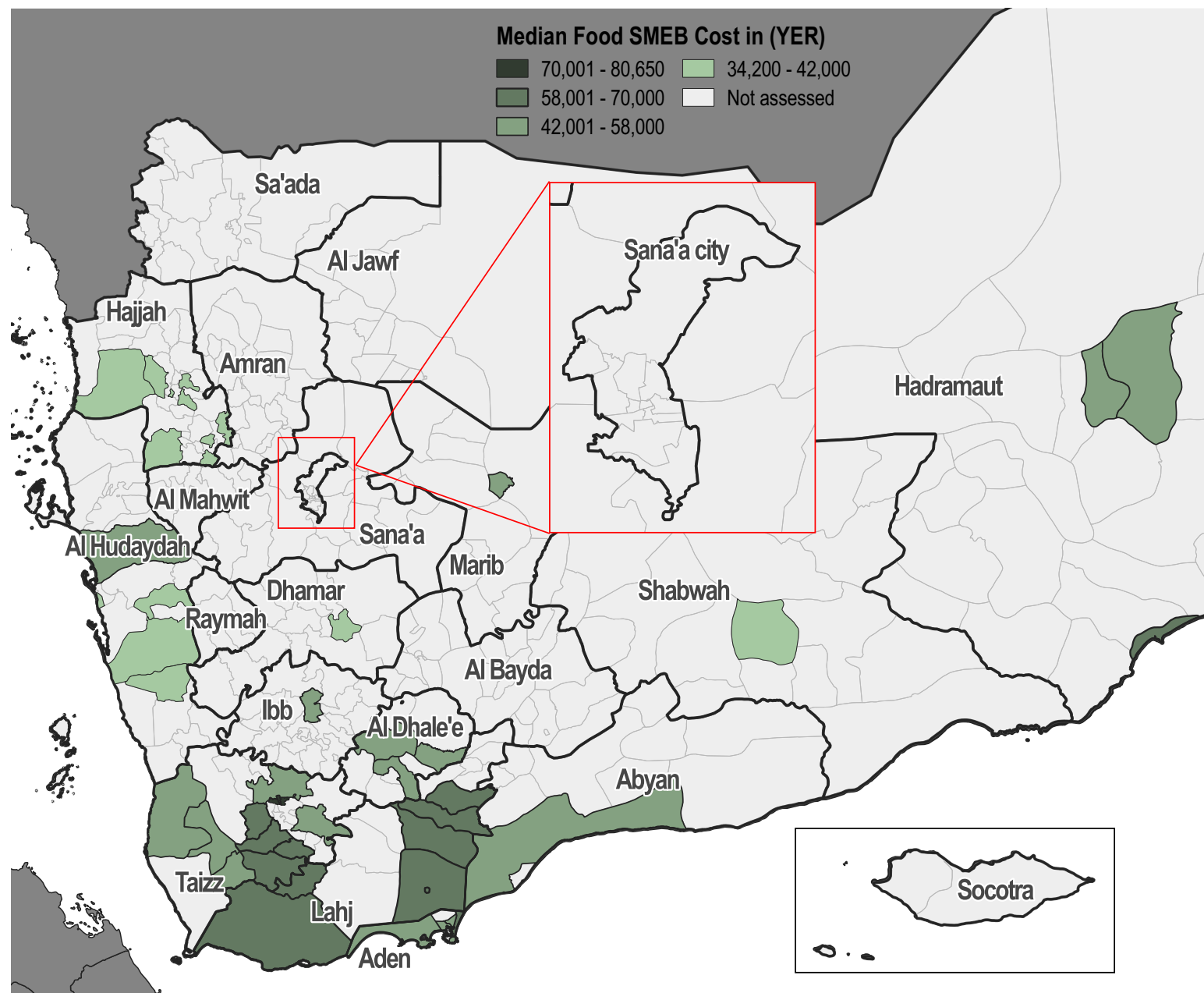
^Includes bank transfers.

Most commonly reported constraints, by % of food vendor KIs*



*Values do not add up to 100% as vendor KIs were allowed to select multiple options.

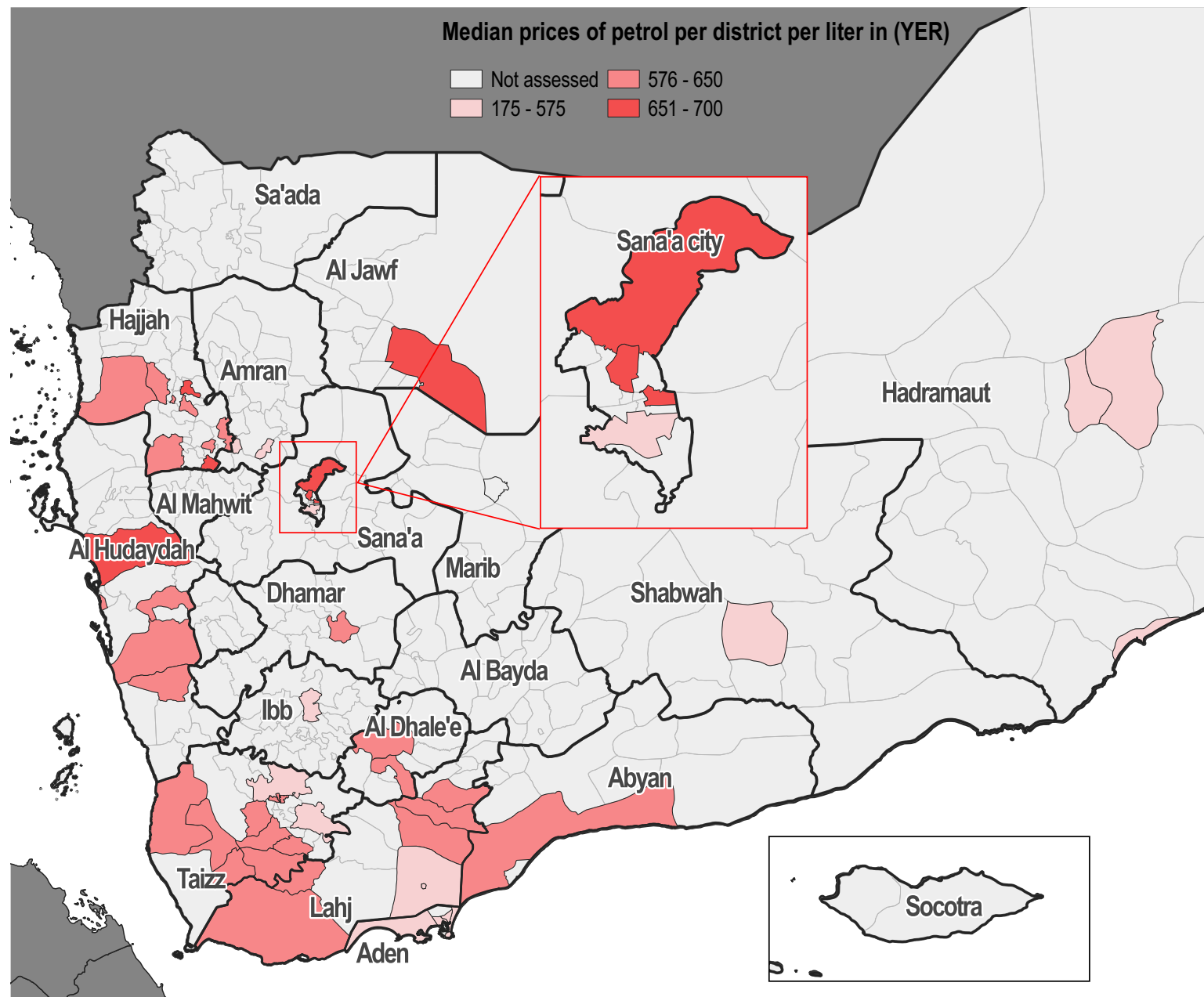
^Includes increased currency fluctuations, lack of oil derivatives, and additional fees.



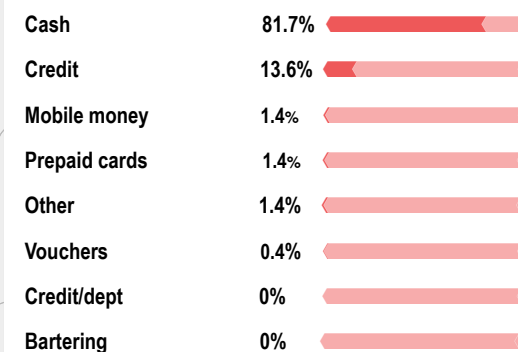
*Total SMEB cost in the legend represents the calculated food basket cost with dry beans.

Median prices of petrol per district per liter in (YER)

Not assessed 576 - 650
175 - 575 651 - 700

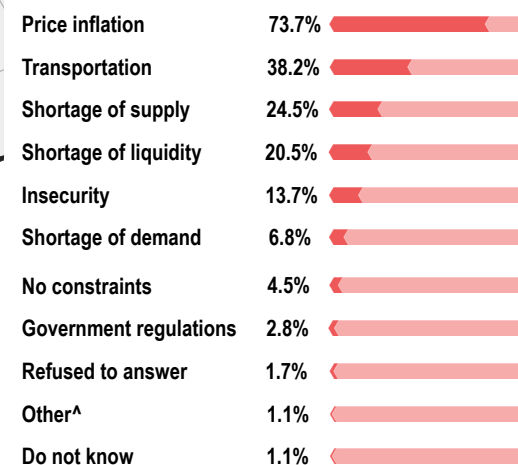


Fuel vendor KIs reported accepting the following payment modalities*



*Values do not add up to 100% as vendor KIs were allowed to select multiple options.

Most commonly reported constraints, by % of fuel vendor KIs*



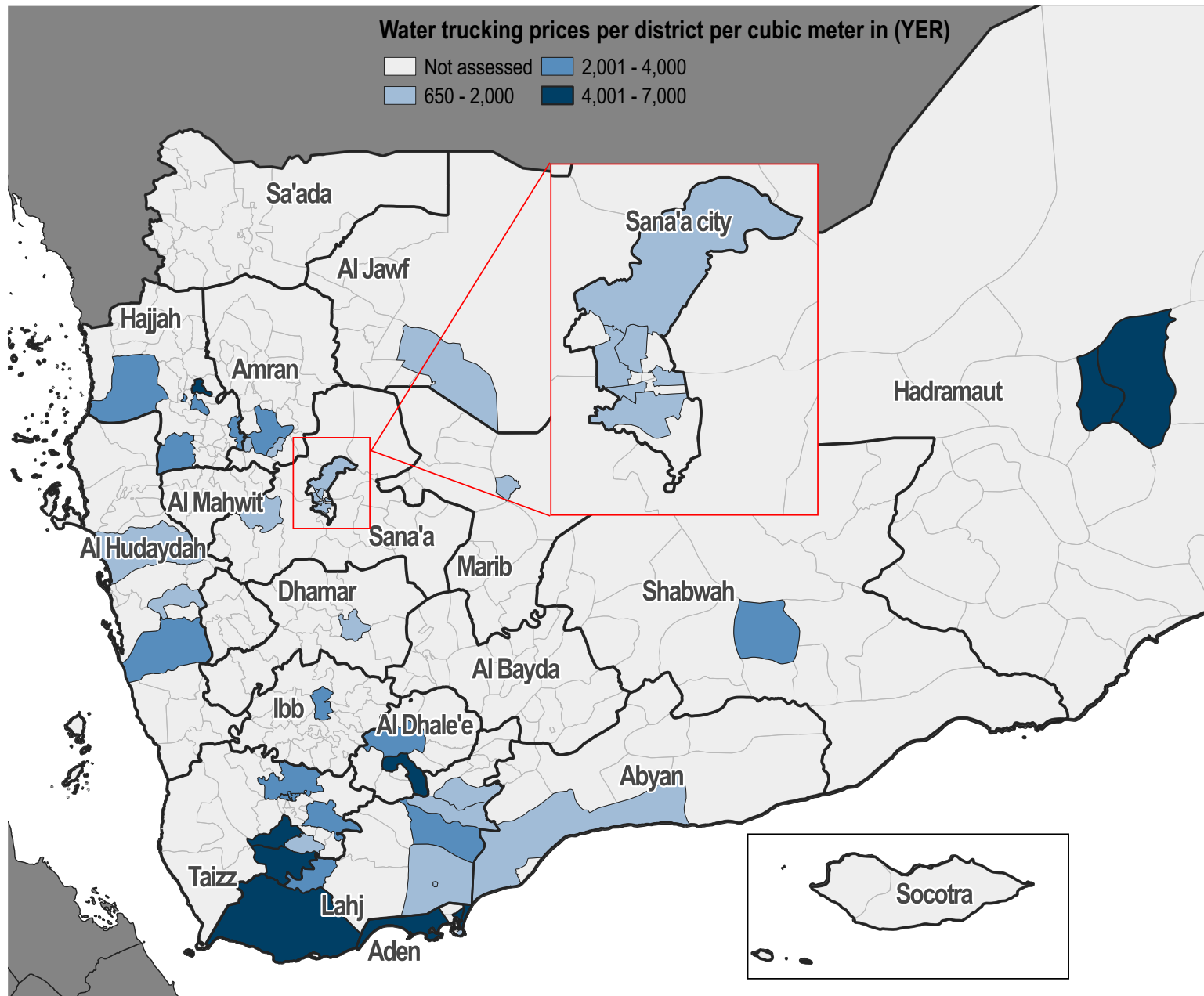
*Values do not add up to 100% as vendor KIs were allowed to select multiple options.

^Includes increased currency fluctuations, loss of vendors in the area, and additional fees.

Water Trucking

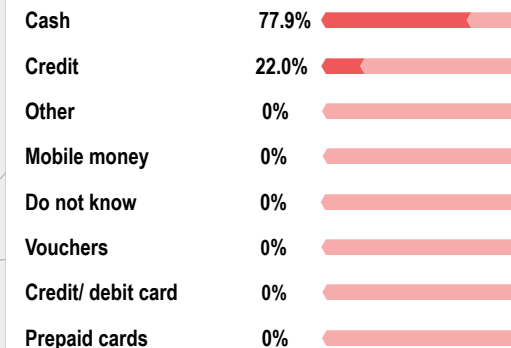
Water trucking prices per district per cubic meter in (YER)

Not assessed 2,001 - 4,000
650 - 2,000 4,001 - 7,000



*Red outlines over districts indicate the districts for which outliers were recorded.

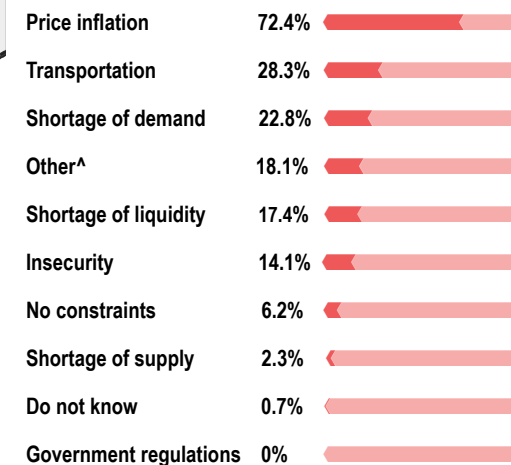
Water trucking vendor KIs reported accepting the following payment modalities*



*Values do not add up to 100% as vendor KIs were allowed to select multiple options.

^Includes bank transfers.

Most commonly reported constraints, by % of water trucking vendor KIs*



*Values do not add up to 100% as vendor KIs were allowed to select multiple options.

^Includes increased currency fluctuations, loss of vendors in the area, and additional fees.

SUPPLY CHAIN OVERVIEW FOR YEMEN

Median price of goods originating from Aden and al Hudaydah

Vendor KIs were asked about the origin of various products sold in their stores. The two main ports of origin for these products were Aden and al Hudaydah. The table below shows the median price of goods originating from these two ports.

Item	Al Hudaydah (price in YER)	Aden (price in YER)
Petrol (1L)	650	600
Diesel (1L)	650	625
Cooking Gas (1 cylinder)	10000	6000
Bottled water (0.75L)	150	200
Treated water (10L)	100	100
Soap (100g)	150	200
Laundry Powder (100g)	120	170
Sanitary Napkins (10 units)	500	700
Wheat Flour (1kg)	320	600
Rice (1kg)	440	1100
Beans Dry (1kg)	1000	1800
Beans Can (15oz can)	300	450
Lentils (1kg)	700	1100
Vegetable Oil (1L)	650	1700
Sugar (1kg)	400	600
Salt (1kg)	100	150
Potatoes (1kg)	400	700
Onions (1kg)	300	300
Bleach (1L)	600	933
Water trucking (1m³)	2500	4000

Average reported restocking time (days)*^

Governorate	Fuel Items	WASH Items	Food Items
Abyan	3 (4)	3 (4)	3 (NA)
Aden	4 (3)	3 (3)	2 (NA)
Al Dhale'e	5 (3)	3 (2)	6 (1)
Al Hudaydah	7 (13)	15 (11)	10 (2)
Al Jawf	6 (4)	5 (3)	4 (1)
Amran	30 (5)	3 (5)	5 (NA)
Dhamar	(1)	1 (2)	1 (1)
Hadramaut	6 (7)	10 (6)	6 (1)
Hajjah	8 (5)	6 (6)	6 (1)
Ibb	(4)	3 (3)	5 (1)
Lahj	7 (5)	7 (8)	5 (3)
Marib	2 (6)	4 (8)	5 (2)
Sana'a	5 (2)	2 (2)	2 (NA)
Sana'a City	3 (2)	2 (3)	2 (1)
Shabwah	2 (2)	2 (3)	2 (1)
Taizz	4 (5)	5 (6)	4 (1)

*Previous average restocking time (April 2021) in days between brackets.
^N/A indicates that the specific question was not answered by the KIs.

Vendor capacity to respond to a sudden increase in demand: Proportion of vendors able to absorb a 50% and 100% increase in demand for key items*

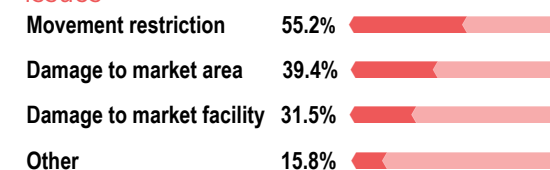
To understand vendor capacity to cope with sudden increases in the demand for water trucking, fuel, and WASH items, vendor KIs were asked if they would be able to increase their stock by 50% and 100% respectively.

The proportion of vendors perceiving to be able to absorb a sudden, 50% increase in fuel demand increased considerably, likely due to increased fuel prices and cutouts driving stocking behaviour.

Effect of supply route changes on businesses

Overall, 14.2% of vendor KIs (38/269) reported having faced supply chain disruptions in the 30 days prior to data collection. Those vendors were asked which supply chain issues they had faced (see graph on the right).

Most commonly reported supply chain issues*



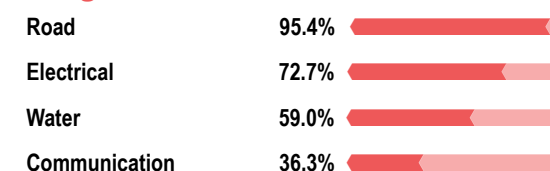
*Values do not add up to 100% as vendor KIs were allowed to select multiple options.

^Other includes: "Lack of oil derivatives" and "high exchange USD/YER rate".

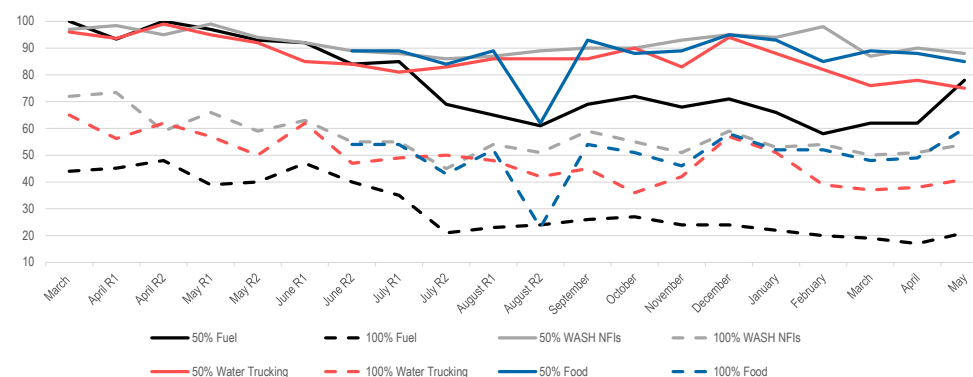
Damaged infrastructure affecting vendor capacity to conduct business

The 19 vendor KIs who reported "damage to the market area" and/or "damage to the market facility" as concerns affecting their capacity to run their businesses were then asked which type of infrastructure was most damaged.

Most commonly reported infrastructure damage*



*Values do not add up to 100% as vendor KIs were allowed to select multiple options.



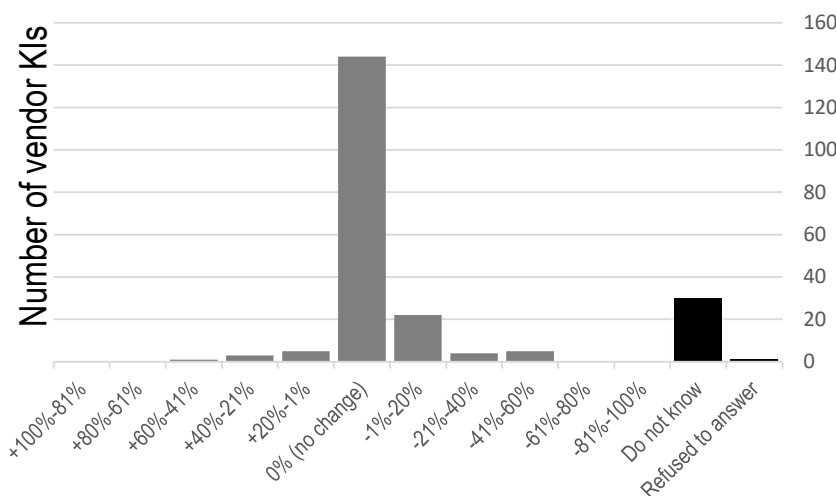
*Between April and August 2020, two rounds of data collection were held each month to monitor the foreseen more rapid changes as a result of the COVID-19 pandemic and restrictions

Impact of COVID-19 on respondents' businesses

Reported estimated change in number of customers in the two weeks prior to data collection

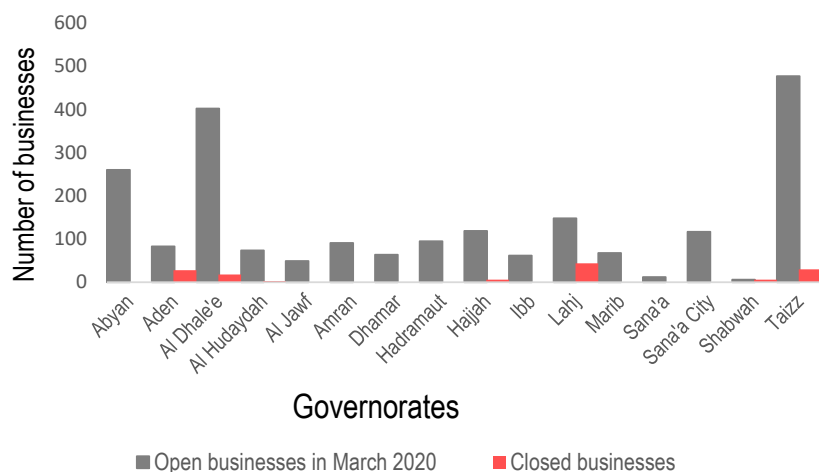
Overall, over half of vendor KIs (57.9%) reported having perceived no change in the number of customers in the two weeks prior to data collection. Less vendors reported having experienced a change in customers, be it either a decrease (2.6% or 7/269 vendors) or increase (11.5%, or 31/269 vendors) of customers.

Of the 269 vendor KIs surveyed, 7.8% (21/269) reported having faced difficulties obtaining key commodities due to disruptions caused by COVID-19 measures in the two weeks prior to data collection (compared to 5.1% reporting this during previous round of data collection in April).



Average number of businesses closures by governorate^

The reported number of businesses within a 2 minute walk from vendor KIs' stalls being closed in the two weeks prior to data collection (135 businesses) increased by 65% compared to the last round of data collection in April (82 businesses).



Average reported number of nearby businesses that were open in April 2020^



10 in April

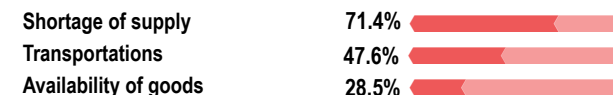
Average reported number of nearby businesses that were closed^



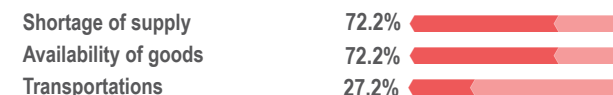
0 in April

^Average number of businesses within a two minute walk from KIs' businesses that were reportedly closed due to COVID-19 in the two weeks prior to data collection.

Top 3 COVID-19 related constraints*

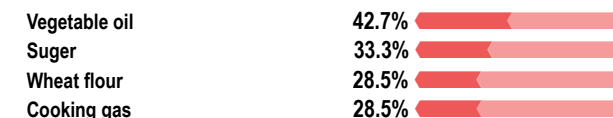


Results from the previous JMIMI round (4 - 8 April)

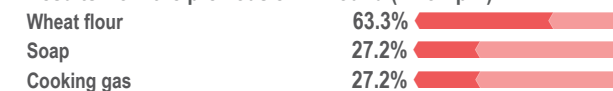


*Based on the responses from the 7.8% (21 out of 269) of vendor KIs who had difficulties obtaining goods due to COVID-19.

Top 3 most difficult goods to obtain*^



Results from the previous JMIMI round (4 - 8 April)



^Based on the responses from the 7.8% (21 out of 269) of vendor KIs who had difficulties obtaining goods due to COVID-19.

ABOUT REACH'S COVID-19 RESPONSE

As an initiative deployed in many vulnerable and crisis-affected countries, REACH is deeply concerned by the devastating impact the COVID-19 pandemic may have on the millions of affected people we seek to serve. REACH works with Cash Working Groups and Partners to provide up-to-date evidence to inform the humanitarian responses in the countries where we operate. COVID-19-relevant market monitoring and market assessments are a key area where REACH aims to leverage its existing expertise to help humanitarian actors understand the impact of changing restrictions on markets and trade. Updates regarding REACH's response to COVID-19 can be found in [a devoted thread](#) on the REACH website. Contact geneva@impact-initiatives.org for further information.

DISTRICTS COVERED

Governorate	District	Petrol price	Water Trucking	SMEB WASH	SMEB Food	SMEB Total	Fuel: Supplier Governorate	Fuel: Total number of respondents^	WASH: Supplier Governorate	WASH: Total number of respondents^	Food: Supplier governorate	Food: Total number of respondents^
Hajjah	Abs	650	2500	15013	43038	58050	3/6	Al Hudaydah	3/6	Al Hudaydah	3/6	Al Hudaydah
Al Dhale'e	Ad Dhale'e	585	5000	24600	54790	79390	NA	NA	5/5	Al Dhalee	18/34	Al Dhalee
Lahj	Al Hawtah	535	2000	16490	63375	79865	3/3	Aden	3/3	Aden	3/3	Aden
Taizz	Al Mukha	613	NA	17606	48109	65715	6/6	Aden	6/6	Aden	6/6	Aden
Aden	Al Buraiqeh	535	7000	32175	56750	88925	4/4	Aden	5/5	Aden	5/5	Aden
Al Hudaydah	Al Hawak	650	NA	12765	36400	49165	3/3	NA	NA	NA	3/3	NA
Sana'a	Al Haymah Ad	NA	1400	11190	NA	NA	1/1	Al Hudaydah	3/3	Sanaa	3/3	Amanat Al Asimah
Al Jawf	Al Hazm	700	2000	19625	NA	NA	2/3	Marib	3/3	Sanaa	3/3	Sanaa
Taizz	Al Ma'afer	615	5000	24350	65602	89952	5/7	Aden	3/5	Aden	5/7	Taizz
Lahj	Al Madaribah Wa	600	5000	26553	62175	88728	3/3	Aden	3/3	Aden	3/3	Aden
Hajjah	Al Mahabishah	640	4000	19700	36350	56050	2/2	Hajjah	9/9	Hajjah	5/9	Hajjah
Ibb	Al Makhadir	575	3000	17150	46150	63300	NA	NA	3/3	Ibb	3/3	Ibb
Aden	Al Mansura	560	NA	28025	55100	83125	3/3	Aden	3/3	Aden	3/3	Aden
Lahj	Al Maqatirah	625	2400	18000	62525	80525	3/3	Aden	2/3	Aden	3/3	Aden
Taizz	Al Mawasit	625	650	10648	65204	75852	3/3	Aden	3/3	Aden	3/3	Aden
Lahj	Al Milah	600	2800	17140	63950	81090	3/3	Aden	2/3	Aden	2/3	Lahj
Taizz	Al Mudhaffar	630	2666	17398	78250	95648	3/3	Aden	3/3	Aden	3/3	Aden
Hadramaut	Al Mukalla City	500	NA	30450	61300	91750	3/3	Hadramaut	3/3	Hadramaut	3/3	Hadramaut
Taizz	Al Qahirah	630	2500	16475	78250	94725	3/3	Aden	3/3	Aden	3/3	Aden
Sana'a City	Al Wahdah	NA	1100	10245	NA	NA	1/2	Al Hudaydah	3/3	Sanaa	3/3	Sanaa
Taizz	Al Wazi'iyah	600	NA	15873	58975	74848	3/3	Aden	3/3	Aden	3/3	Aden
Amran	Amran	550	1750	12145	NA	NA	2/3	Al Hudaydah	6/6	Sanaa	5/6	Sanaa
Sana'a City	As Sabain	295	1800	12420	NA	NA	NA	NA	3/3	Amanat Al Asimah	3/3	Amanat Al Asimah
Al Hudaydah	As Sukhnah	600	2000	13525	42800	56325	3/3	Al Hudaydah	3/3	Al Hudaydah	3/3	Al Hudaydah
Aden	Ash Shaikh	535	7000	31650	58350	90000	3/3	Aden	3/3	Aden	3/3	Aden
Taizz	Ash Shamayatayn	615	5000	25508	67615	93122	NA	NA	2/2	Aden	4/4	Taizz
Al Dhale'e	Ash Shu'ayb	NA	NA	19726	56693	76419	NA	NA	4/4	Aden	4/4	Aden
Hajjah	Aslem	650	NA	16650	42600	59250	NA	NA	NA	NA	2/3	NA
Taizz	At Ta'iziyah	575	3000	16950	46250	63200	1/2	Sanaa	3/3	Taizz	3/3	Taizz
Shabwah	Ataq	550	2600	15640	43725	59365	2/3	Al Dhalee	1/2	Sanaa	2/3	Hadramaut
Sana'a City	Ath'thaorah	700	1400	10170	NA	NA	1/1	Sanaa	3/3	Sanaa	3/3	Sanaa
Sana'a City	Az'zal	700	1330	9950	NA	NA	3/3	Sanaa	3/3	Sanaa	3/3	Sanaa
Al Hudaydah	Bajil	700	2000	12775	46300	59075	3/3	Al Hudaydah	3/3	Al Hudaydah	3/3	Al Hudaydah
Hajjah	Bani Al Awam	700	NA	16425	38675	55100	1/1	Sanaa	3/3	Hajjah	3/3	Amanat Al Asimah
Sana'a City	Bani Al Harith	700	1400	10170	NA	NA	3/3	Sanaa	3/3	Sanaa	3/3	Sanaa
Hajjah	Bani Qa'is	650	2500	14950	43413	58363	6/6	Al Hudaydah	6/6	Al Hudaydah	6/6	Al Hudaydah
Al Hudaydah	Bayt Al Faqiah	600	4000	19075	34250	53325	3/3	Al Hudaydah	3/3	Al Hudaydah	3/3	Al Hudaydah
Aden	Craiter	535	1600	15150	56075	71225	3/3	Aden	3/3	Aden	3/3	Aden
Dhamar	Dhamar City	650	1500	12099	40950	53049	NA	NA	3/3	Dhamar	3/3	Dhamar
Taizz	Dimnat Khadir	550	3000	17550	51400	68950	NA	Taizz	3/3	Taizz	3/3	Taizz

CONT.

Governorate	District	Petrol price	Water Trucking	SMEB WASH	SMEB Food	SMEB Total	Fuel: Supplier Governorate	Fuel: Total number of respondents^	WASH: Supplier Governorate	WASH: Total number of respondents^	Food: Supplier governorate	Food: Total number of respondents^
Lahj	Habil Jabr	600	2000	17425	60675	78100	3/3	Aden	3/3	Aden	3/3	Aden
Hajjah	Hajjah City	650	NA	17675	43525	61200	3/3	Al Jawf	3/3	Amanat Al Asimah	3/3	Al Hudaydah
Taizz	Jabal Habashy	600	NA	18513	63663	82176	3/3	Lahj	3/3	Taizz	2/2	Taizz
Amran	Jabal lyal Yazid	NA	2500	14130	NA	NA	NA	NA	3/3	Amran	3/3	Amran
Abyan	Khanfir	600	2000	14562	58700	73262	3/3	Aden	3/5	Abyan	3/5	Abyan
Aden	Khur Maksar	535	5000	23850	61550	85400	3/3	Aden	3/3	Aden	3/3	Aden
Hajjah	Kuhlan Affar	650	3000	15925	36600	52525	3/3	Hajjah	3/3	Amran	3/3	Amran
Hajjah	Kuhlan Ash Sharaf	675	5000	22325	36375	58700	1/2	Sanaa	3/3	Hajjah	2/3	Amanat Al Asimah
Sana'a City	Ma'ain	NA	1000	10430	NA	NA	1/2	Al Hudaydah	3/3	Sanaa	3/3	Sanaa
Marib	Marib City	175	1000	11680	48400	60080	3/3	Marib	2/3	Sanaa	NA	NA
Taizz	Mawza	600	NA	15887	58975	74862	3/3	Aden	2/2	Aden	3/3	Aden
Al Dhale'e	Qa'atabah	600	2500	15784	57125	72909	3/3	Aden	6/6	Aden	NA	NA
Lahj	Radfan	600	1750	16383	60475	76858	3/3	Aden	3/3	Aden	3/3	Aden
Taizz	Salh	630	2750	17263	77250	94513	3/3	Aden	3/3	Aden	3/3	Aden
Hadramaut	Sayun	500	5000	25779	57900	83679	3/3	Hadramaut	3/3	Hadramaut	3/3	Hadramaut
Hadramaut	Tarim	500	5000	25277	57875	83152	3/3	Hadramaut	3/3	Hadramaut	3/3	Hadramaut
Lahj	Tuban	575	1500	13575	64275	77850	4/4	Aden	3/4	Aden	4/4	Aden
Al Hudaydah	Zabid	650	NA	12975	38800	51775	3/3	Al Hudaydah	3/3	Al Hudaydah	3/3	Al Hudaydah

^If the number is 4/10 (e.g), this indicates that 10 vendor KIs were interviewed, and of this, 4 answered the supply question.

The supplier governorate indicates the most prevalent answer. In the case of a tie, both governorates are shown.

*The table shows SMEB values and supply chains inside the same governorate and towards other governorates. Districts without a main supplier are those districts where vendor KIs could not identify the origin of the items they sold.

APPENDIX

What is the cash and markets working group (CMWG)?

With the emergence of the conflict in 2014, humanitarian actors in Yemen began using cash and vouchers as a response tool to meet the immediate needs of the Yemeni population. The CMWG was established to provide a platform for discussion and setting standards/recommendations on cash and market-based responses (inclusive of cash and vouchers) for the cash actors in Yemen. The JMIMI was developed by the CMWG, the WASH Cluster, and REACH in order to harmonize price monitoring amongst WASH actors in Yemen.

Additional information on methodology

To be assessed by the JMIMI, markets must be either a single permanent market, or a local community where multiple commercial areas are located in close proximity to one another. When possible, markets/shops are selected within a single geographical location, where there is at least one wholesaler operating in the market.

Participating organisations train their enumerators on the JMIMI methodology and data collection tools using standard training materials developed by REACH. Each month, enumerators conduct KI interviews with market vendors to collect three price quotations for each item from the same market in each district. In addition to price levels, vendors are asked about the location of their supplier, the number of days it takes to restock the items, and the constraints they are facing in purchasing and selling the items in question. Additional questions are included for water trucking, to gauge the impact of delivery distance upon price level.

Following data collection, REACH compiles and cleans all partner data, normalising prices and cross-checking outliers. The cleaned data is then analysed by commodity and by governorate. To illustrate local variations in prices and availability, REACH uses the collected data to map the price of each type of item in each district. REACH also calculates the WASH SMEB (Survival Minimum Expenditure Basket), which is composed of four items: soap (1.05 kg), laundry powder (2 kg), sanitary napkins (50 units) and water trucking (3.15 m3). Food SMEB contains 75 kg of wheat flour, 10 kg of beans (kidney), 8L of vegetable oil, 2.5 kg of sugar, and 1 kg iodized salt.

The cleaned data sets are available on the [REACH Resource Centre](#) and are distributed to all participating partners, as well as to relevant clusters and the broader humanitarian community.

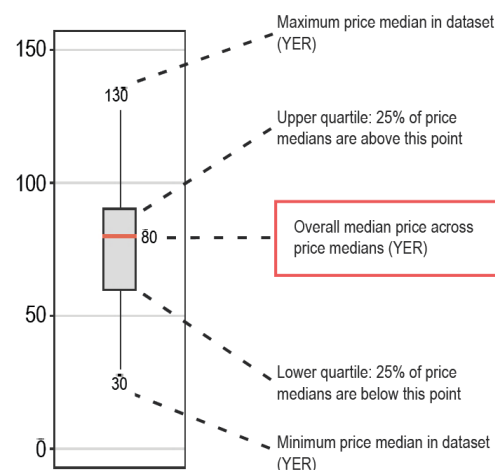
Limitations

Due to issues of access and security across Yemen, the districts included in the JMIMI vary on a monthly basis, and as such there are sometimes a limited number of districts for which trends can be assessed over time. Governorate level data is aggregated from the respective districts assessed in a given month, and so the findings are not representative of individual markets. Finally, the market monitoring process has been coordinated remotely by REACH, which inherently presents some challenges in terms of coordination and follow-up with partners. Participating organisations are therefore requested to adopt harmonised data collection methodologies and tools to ensure that the data uploaded is as accurate as possible.

Calculation of district and governorate median price

District, governorate and national median prices are calculated using data from all assessed markets. Percentage changes from one month to another are calculated only on data from markets that were assessed in both consecutive months. Therefore, part of the percentage variation could be attributed to changes in monthly coverage.

How to read a box plot



ABOUT REACH

REACH is a joint initiative that facilitates the development of information tools and products that enhance the capacity of aid actors to make evidence-based decisions in emergency, recovery and development contexts. By doing so, REACH contributes to ensuring that communities affected by emergencies receive the support they need. All REACH activities are conducted in support to and within the framework of inter-agency aid coordination mechanisms. For more information, please visit our website at www.reach-initiative.org, contact us directly at ahmet.damar@reach-initiative.org or follow us on Twitter at [@REACH_info](https://twitter.com/REACH_info).

Participating partners include



Number of districts assessed per governorate

Governorate	Assessed districts
Abyan	1
Aden	5
Al Dhale'e	3
Al Hudaydah	5
Al Jawf	1
Amran	2
Dhamar	1
Hadramaut	3
Hajjah	8
Ibb	1
Lahj	7
Marib	1
Sana'a	1
Sana'a City	6
Shabwah	1
Taizz	12