

# Somalia - Baidoa North - IDP Settlement

## Facilities per Settlement (December 2013)

For humanitarian relief purpose only  
Production date : 21 March 2014

### School

- Primary
- ECD
- other

### Waterpoint

- Protected Well - Hand Pump
- Tank and Tap
- Unprotected Well
- Burkad
- Other Piped System

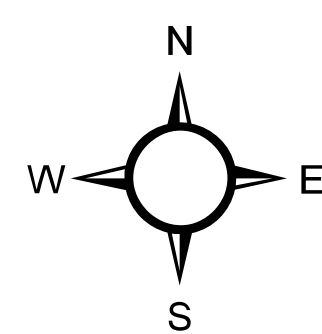
### Type of Latrines

- Communal
- Household

### Facilities

- Garbage Collection Point
- Health Facility
- Kiosk
- Market
- Mosque
- Community Centre
- Shelters (UNOSAT analysis)
- Assessed IDP Settlement

- Main City
- International Boundary
- Region
- District



Scale map A0: 4'000

Data sources:  
Facilities and IDP sections: REACH assessment  
Water points outside settlements:  
WASH Cluster (ACTED) - Nov 2013  
Shelter: UNOSAT analysis (21.08.2013 - 08.02.2014)  
Admin level: OCHA C/C/D  
Imagery (1): 08 February 2014 (Pleiades/50 cm)  
Copyright : CNES 2013 - Astrium Services/Spot Image  
Imagery (2): 21 August 2013 (WorldView-1/50cm)  
Copyright : US Dept of State, Hum.int/Unit.  
Coordinate System: GCS WGS 1984  
File: SOM\_Baidoa\_Infras\_IDP\_21mars2013\_A0L  
Contact : reach.mapping@impact-initiatives.org

The assessment does not cover all IDP settlements in Baidoa town. Areas of assessment represent only those identified by the clusters as priorities. The remaining shelters have not been assessed but may be interesting for future intervention by actors

Note: Data, designations and boundaries contained on this map are not warranted to error-free and do not imply acceptance by the REACH partners and associated donors mentioned on this map. For Humanitarian purposes only.

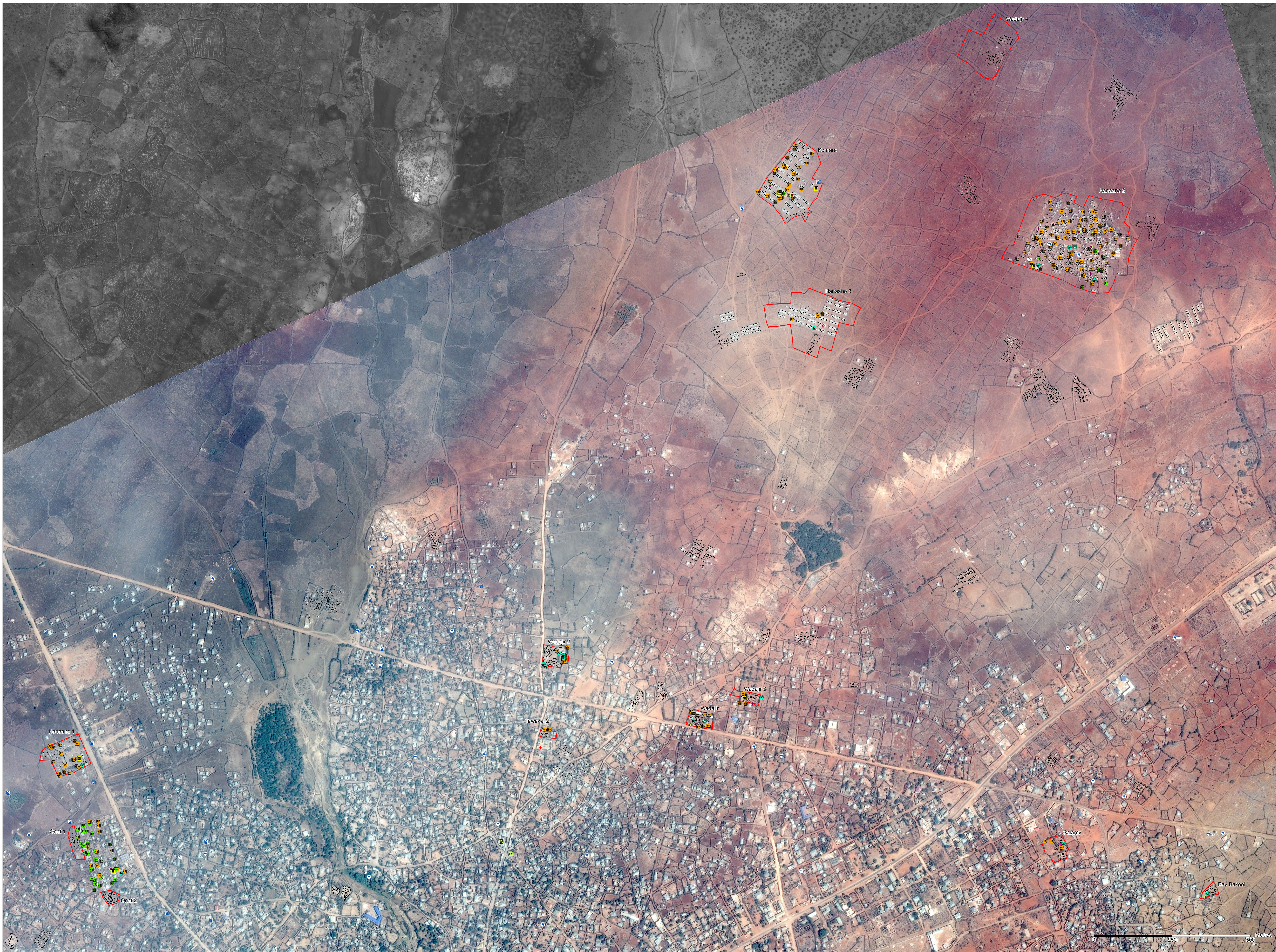
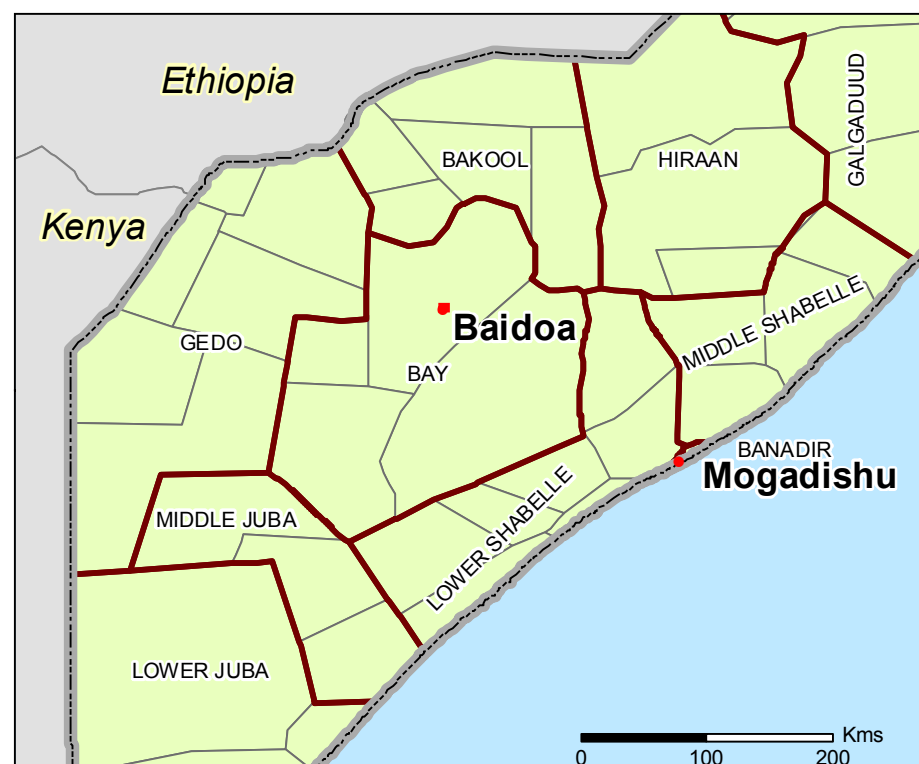
### Funded by



Humanitarian Aid  
and Civil Protection



**USAID**  
FROM THE AMERICAN PEOPLE



0 100 250 500 Metres