

# Research Terms of Reference

Assessment of Hard to Reach Areas

Research Cycle ID: SSD1701a

South Sudan

November 2018

Version 2.0

**REACH** Informing  
more effective  
humanitarian action

## 1. Executive Summary

<b>Country of intervention</b>	South Sudan		
<b>Type of Emergency</b>	<input type="checkbox"/> Natural disaster	<input checked="" type="checkbox"/> Conflict	
<b>Type of Crisis</b>	<input type="checkbox"/> Sudden onset	<input type="checkbox"/> Slow onset	<input checked="" type="checkbox"/> Protracted
<b>Mandating Body/ Agency</b>	OCHA, national and state-level Inter Cluster Working Group (ICWG), clusters and working groups		
<b>Project Code</b>	32DAF (32iAED), 32DDM (32iAEK)		
<b>Research Timeframe</b> <i>Add planned deadlines (for first cycle if more than 1)</i>	1. Start collect data: 01/10/2018	4. Data sent for validation: 08/11/2018	
	2. Data collected: 31/10/2018	5. Outputs sent for validation: 15/11/2018	
	3. Data analysed: 05/11/2018	6. Outputs published: 30/11/2018	
<b>Number of assessments</b>	<input type="checkbox"/> Single assessment (one cycle)	<input checked="" type="checkbox"/> Multi assessment (more than one cycle) <sup>1</sup>	
<b>Humanitarian milestones</b> <i>Specify what will the assessment inform and when e.g. The shelter cluster will use this data to draft its Revised Flash Appeal;</i>	<b>Milestone</b>	<b>Deadline</b>	
	X OCHA HNO & HRP	REACH will feed AoK data to support the 2019 South Sudan Humanitarian Needs Overview and Humanitarian Response Plan.	
	x Needs Analysis Working Group	REACH co/chairs the Needs Analysis Working Group with OCHA and feeds monthly Area of Knowledge data to support in identification of "hotspot" locations for ICWG prioritization.	
	X IPC Analysis Workshops	REACH through participation in IPC technical working group, bi-annual IPC analysis workshops and FSL WASH/Nutrition/health analysis working group will provide timely updates and participation in analysis to identify areas with highest levels / highest risk levels of severe/extreme food insecurity	
	<b>Audience type</b>	<b>Dissemination</b>	

<sup>1</sup> Assessment conducted on a monthly cycle

<b>Audience Type &amp; Dissemination</b> <i>Specify who will the assessment inform and how you will disseminate to inform the audience</i>	<input checked="" type="checkbox"/> Strategic <input checked="" type="checkbox"/> Programmatic <input checked="" type="checkbox"/> Operational <input type="checkbox"/> Other (specify):	<input checked="" type="checkbox"/> General Product Mailing (e.g. mail to NGO consortium; HCT participants; Donors) <input checked="" type="checkbox"/> Cluster Mailing (Education, Shelter and WASH) and presentation of findings at next cluster meeting <input checked="" type="checkbox"/> Presentation of findings (e.g. at ICWG meeting; Cluster meeting) <input checked="" type="checkbox"/> Website Dissemination (Relief Web & REACH Resource Centre) <input checked="" type="checkbox"/> AO sharing of settlement level data at the sub-national coordination fora
<b>Detailed dissemination plan required</b>	<input type="checkbox"/> Yes	<input checked="" type="checkbox"/> No
<b>M&amp;E Matrix required</b>	<input checked="" type="checkbox"/> Yes	<input type="checkbox"/> No
<b>General Objective</b>	To assist humanitarian actors in making more informed decision about the scale, scope and location of the humanitarian response through providing detailed information and longitudinal analysis on humanitarian needs, displacement dynamics, and service access in hard-to-reach areas in South Sudan.	
<b>Specific Objective(s)</b>	<ol style="list-style-type: none"> <li>1. To identify cross-sectoral needs and vulnerabilities of IDP and host community populations in hard-to-reach areas.</li> <li>2. To provide up-to-date information on service provision and access in hard-to-reach areas.</li> <li>3. To map main displacement patterns to and from hard-to-reach areas in South Sudan.</li> </ol>	
<b>Research Questions</b>	<ul style="list-style-type: none"> <li>• What are the needs and vulnerabilities of IDP and host community populations in hard-to-reach areas with regards to Food Security, Livelihoods, Health, Nutrition, Shelter/NFI, WASH, Education and Protection and how do these change over time?</li> <li>• To which services and type of humanitarian assistance do IDP and host community populations in hard-to-reach areas have access and what access constraints exist?</li> <li>• What are the key demographic characteristics (e.g. size, type of populations present such as IDPs, returnees etc ) of populations in hard-to-reach areas/settlements?</li> <li>• What are the key displacement trends to and from hard-to-reach areas (presence of IDPs, push and pull factors for new arrivals, month and area of origin of IDP arrivals, intention to move)?</li> </ul>	
<b>Geographic Coverage</b>	<ul style="list-style-type: none"> <li>• Greater Ectoria region (Eastern, Central and Western Ectoria States)</li> <li>• Greater Upper Niles region (Jonglei, Unity and Upper Nile States)</li> <li>• Bahr el Ghazal region (Northern, Western Bahr el Ghazal, Lakes States – Warrap State planned)</li> </ul>	
<b>Secondary data sources</b>	<ul style="list-style-type: none"> <li>• OCHA, IOM DTM, WFP humanitarian needs overviews / situation reports</li> <li>• WFP/FAO Monthly price monitoring</li> <li>• IPC updates and reports</li> <li>• ACLED, CLIMIS, FSNMS</li> <li>• Inter-agency Rapid Needs Assessments (IRNAs)</li> <li>• Cluster-led assessments (FSL, WASH, Education, Health, Nutrition etc)</li> <li>• Partner-led assessments (Oxfam, Save the Children, Concern etc)</li> </ul>	

	<ul style="list-style-type: none"> <li>• Past AoK data from South Sudan</li> <li>• Academic papers (e.g. Upcoming Maxwell et al. on famine declarations)</li> <li>• Online media sources (Sudan tribune, Radio Tamazuj etc)</li> </ul>			
<b>Population(s)</b> <i>Select all that apply</i>	X	IDPs in camp	X	IDPs in informal sites
	X	IDPs in host communities	<input type="checkbox"/>	IDPs Other ( <i>Specify</i> ):
	<input type="checkbox"/>	Refugees in camp	<input type="checkbox"/>	Refugees in informal sites
	<input type="checkbox"/>	Refugees in host communities	<input type="checkbox"/>	Refugees Other ( <i>Specify</i> ):
	X	Host communities	X	Other ( <i>Specify</i> ): <i>returnees</i>
<b>Stratification</b> <i>Select type(s) and enter number of strata</i>	X	Geographical #: hard-to-reach settlements across ten (former) states Population size per strata is known? <input type="checkbox"/> Yes x No Threshold for reporting at county-level: at least 5% of settlements in a given county must have been assessed. Threshold for reporting at hexagon-level <sup>2</sup> (one hexagon 10 km long): min. 2 settlements with at least 3 KIs		
<b>Data collection tool(s)</b>	X	Structured (Quantitative)	X	Semi-structured (Qualitative)
	<b>Sampling method</b>		<b>Data collection method</b>	
<b>Structured data collection tool # 1</b> <i>Select sampling and data collection method and specify target # interviews</i>	X Purposive The selection criteria for a KI, is that s/he has knowledge of a remote settlement from within the last month. Please see Section 3.4 for further details and rationale on the sampling approach.  Enumerators seek out two types of key informants:  <ul style="list-style-type: none"> <li>- Direct KIs: Key informants who have knowledge (defined as direct contact with persons living in the settlement in the last month) of a remote settlement will be interviewed. KIs in this category are expected to be i) newly arrived IDPs, ii) itinerants (traders, NGO officials), and/or iii) individuals who have regular phone/satellite/radio communication with individuals living in the settlement.</li> <li>- Remote KIs: informants interviewed through phone calling: REACH will directly interview KIs living in settlements of interest, through phone calling from Juba. KIs are selected through snowball sampling.</li> </ul> <i>Description of tool:</i> <ul style="list-style-type: none"> <li>- Monthly multi-sector quantitative survey.</li> </ul>		X Key informant interview (Target: minimum of one KI per assessed settlement)  Information is collected at the settlement level and is either direct or remote:  Number of target KII varies according to number of settlements present in a county, with the most recent OCHA Common Operational Dataset (COD) released in February 2015 used as the reference for settlement names and locations. Target is to achieve minimum of 5% settlement coverage in a given county, with a minimum of 1 KII/settlements;  Given more than one quantitative survey may be collected on a given settlement, data from KIs reporting on the same settlement is aggregated to the settlement level. To present information at the county-level data from settlements is then aggregated to the county level.	

<sup>2</sup> Hexagons are 10 km long hexagonal areas designated by the GIS team and do not relate to administrative boundaries

<b>Semi-structured data collection tools # 1</b> <i>Select sampling and data collection method and specify target # interviews</i>	<input checked="" type="checkbox"/> Purposive/Snowballing <i>Description of tool:</i> - Monthly displacement mapping focus group discussions	<input checked="" type="checkbox"/> Focus group discussion (Target #): minimum 6 FGDs per state, to be led by saturation	
<b>Semi-structured data collection tool # 2</b>	<input checked="" type="checkbox"/> Purposive <i>Description of tool:</i> - Monthly Food Security and Livelihood mapping focus group discussions	<input checked="" type="checkbox"/> Focus group discussion (Target #): minimum 6 FGDs per state, to be led by saturation	
<b>Semi-structured data collection tool # 3</b>	<input checked="" type="checkbox"/> Purposive <i>Description of tool:</i> - Monthly Service Access Gap focus group discussion (where applicable)	<input checked="" type="checkbox"/> Focus group discussion (Target #): minimum 6 FGDs per state, to be led by saturation	
<b>Target level of precision if probability sampling</b>	NA	NA	
<b>Data management platform(s)</b>	<input checked="" type="checkbox"/> IMPACT	<input type="checkbox"/> UNHCR	
	<input type="checkbox"/> [Other (Specify)]:		
<b>Expected output type(s)<sup>3</sup></b>	<input checked="" type="checkbox"/> Situation overview #: 5 per quarter	<input type="checkbox"/> Report #: As needed/requested	<input type="checkbox"/> Profile #: As needed/requested
	<input checked="" type="checkbox"/> Presentation (Preliminary findings) #: 12	<input checked="" type="checkbox"/> Presentation (Final) #: 36 (on average 3 state-level presentations monthly)	<input checked="" type="checkbox"/> Sector-Factsheet #: 6 (1 per sector per month covering all assessed counties in South Sudan, 6 sectors in total)
	<input checked="" type="checkbox"/> Interactive dashboard #: 1	<input type="checkbox"/> Webmap #: __	<input checked="" type="checkbox"/> Map #: stand-alone, upon request
	<input type="checkbox"/> [Other Specify] #: __		
<b>Access</b>	<input checked="" type="checkbox"/> Public (available on REACH resource center and other humanitarian platforms)		
	<input checked="" type="checkbox"/> Restricted (bilateral dissemination only upon agreed dissemination list, no publication on REACH or other platforms) <i>settlement level dataset available upon request, all other outputs publically available</i>		
<b>Visibility</b>	All product should be REACH branded, with visible USAID and SDC logos included, where other partners support or fund data collection, their logos should be included or reference provided on each document.		

## 2. Background and Rationale

South Sudan enters its fifth year of political crisis, stemming from violent conflict erupting in Juba in December 2013. The dynamic and multi-faceted nature of the South Sudanese displacement crisis has created significant challenges for humanitarian information management. Accessibility and security issues within South Sudan have impeded systematic data

<sup>3</sup> Output targets refer to annual period.

collection efforts, limiting the effectiveness of humanitarian planning and implementation. As evidenced in the Leer 2017 famine declaration, people in hard-to-reach locations, with limited humanitarian access, are often the worst-affected population. Consequently it becomes increasingly critical to ensure we are monitoring closely the humanitarian needs of populations living in conflict-affected and inaccessible areas.<sup>4</sup>

To monitor humanitarian needs and displacement of populations living in hard-to-reach areas, REACH conducts remote data collection using the “Area of Knowledge (AoK)” methodology from areas inside South Sudan where access to direct regular primary data collection is not possible, as well as direct primary data collection in secure and accessible locations. In early 2016, REACH began AoK data collection in Jonglei and Unity (former) state. In recognition of the urgent need for data in the Greater Equatorias and Bahr el Ghazals for IPC analysis, REACH expanded data collection in Upper Nile, Western Bahr el Ghazal and the Equatorias in January 2017. As of February 2018, AoK data is collected from 14 field locations in South Sudan, assessing 9 out of the 10 states (see below for more details). Humanitarian information is currently collected at the settlement (village/neighborhood) level in areas identified with ongoing violence or deepening food insecurity, through a network of key informants (KIs).

The AoK approach provides regular, reliable indicative tracking of humanitarian needs over time, to support in prioritization and identification of “hot-spot” areas witnessing a deterioration of humanitarian needs. To ensure this data is directly informing humanitarian response planning, data is shared through formal coordination structures, such as OCHA, the ICWG, relevant clusters as well as the IPC, with feedback from partners used for both triangulations of gathered data as well as to inform research design and geographical targeting.

## 3. Methodology

### 3.1 Population of interest

In recognition of the urgent need for data from non-formal camp setting to improve the understanding of the humanitarian context in South Sudan, this assessment focuses on IDP and host community populations in hard-to-reach or inaccessible areas in Greater Upper Nile, Greater Equatoria and Greater Bahr el Ghazal. For the purpose of this assessment, hard-to-reach areas are defined as those areas of the country that are not regularly accessible either due to poor infrastructure, active conflict or humanitarian access restrictions, or a combination of these.

Data is collected at the lowest possible administrative unit – individual settlements – as derived from the OCHA settlement dataset (in which a settlement represents a village or neighbourhood in a defined urban area), to ensure that the area for which KIs are providing information corresponds directly to their actual area of knowledge, thereby mitigating unfounded deductions. Moreover, reporting and collection of data at the settlement level is driven by the absence of a common operational dataset on payam and bomas (higher administrative levels). The level of coverage (proportion of settlements assessed in a given county/state) will be declared for each product when results are presented. County-level reporting in which less than 5% of settlements have been assessed will be not be included in published REACH products.

### 3.1 Secondary data review

Secondary data will be used throughout all stages of the research cycle to identify locations most in need of data collection, to support in the design of tools and to triangulate data produced:

- Selecting geographic coverage: Areas **without** secondary data will be targeted for Area of Knowledge data collection, especially when this is a result of limited humanitarian access. Through discussions with humanitarian partners, existing analysis processes (HNO, IPC analysis and the Needs Analysis Working Group) hard-to-reach areas will be identified and targeted in data collection.
- Designing of the quantitative key informant tool: Prior to, throughout and after monthly data collection, assessment teams will continue to monitor secondary data, including media sources, to inform the design and content of the

---

<sup>4</sup> [IPC RELEASE](#) South Sudan, February 2017

questionnaires; inform the geographic coverage focus as well as to ensure contextualization of findings for the final outputs (see page 2 for a detailed list of secondary sources consulted).

- Triangulation of Area of Knowledge data in analysis and product drafting: Further, to triangulate information produces through Area of Knowledge data collection – data produced by OCHA, WFP and specific clusters, when available, will be used to verify and confirm findings

### 3.3. Primary Data Collection

As outlined in Table 1 below, data for this assessment is collected across 14 field locations in South Sudan over a period of three weeks a month, with data collection teams in each location consisting of a minimum of four enumerators and one Field Coordinator. Please also see Map 1 in Annex 2 for an overview of data collection sites.

Table 1: Overview data collection sites

<b>Geographical region</b>	<b>(Former) State</b>	<b>Data collection base location</b>
Greater Equatorias	Eastern Equatoria	Kapoeta Town
	Central Equatoria	Juba – remote phone calling
	Western Equatoria	Yambio Town
Greater Upper Nile	Unity	Nyal Town
		Bentiu PoC
		Jamjang Town
	Jonglei	Akobo Town
		Bor PoC + Bor Town
	Upper Nile <sup>5</sup>	Akobo Town
Malakal PoC		
Greater Bahr el Ghazals	Western Bahr el Ghazal	Wau PoC + IDP Collective Sites
	Northern Bahr el Ghazal	Aweil Town
	Warrap	Wau PoC – remote phone calling
	Lakes	Mingkaman Spontaneous Settlement

#### Quantitative data collection tools

Quantitative data is collected across the above-mentioned field locations through a *structured multi-sector survey tool* (see Annex 3) that captures settlement-level information on displacement, FSL, WASH, Shelter, Nutrition, Protection, Education, and Health and can be used in both direct as well as remote data collection. In all REACH AoK field locations, the same multi-sector tool and questions are used. The tool was designed in collaboration with input from cluster partners. Feedback

<sup>5</sup> Data on south-eastern Upper Nile State is also collected from Akobo Town.

is encouraged from partners each month, however changes to existing questions are limited by the need for comparability over time.

The tool is available in Dinka, Nuer, Arabic as well as English, with data collected on mobile phones through the Open Data Kit application (Kobo Toolbox). At the end of each data collection day, the forms are uploaded to the Kobo server, after which the datasets are merged, cleaned and uploaded to the REACH/IMPACT server on a daily basis. Data is collected by enumerators who are supervised by Field Coordinators who in turn are managed by Assessment Officers. Before the start of data collection each morning, enumerators are briefed by Field Coordinators based on the data cleaning process of the previous day (described in the next section) to ensure appropriate coverage, debrief on any potential data collection errors and achieve the highest quality in data collection.

#### *Qualitative data collection tools*

In order to provide a more in-depth understanding of the dynamic context as well as to complement data collected through the quantitative tool, the monthly three-week data collection cycle also entails FGDs. FGDs are conducted by Field Coordinators and/or Assessment Officers, with FGDs typically separated by gender of participants (please see below for selection of FGD participants). During these FGDs the following tools are used:

- *Displacement mapping tool (see Annex 4)*: A participatory mapping tool for use within focus group discussions is used to capture displacement flows and push and pull factors to and from static IDP sites. This is conducted each month to provide an analysis of displacement trends per geographical area. FGD participants are purposively sampled new arrivals (IDPs who arrived within the last month).
- *Food security and livelihoods mapping tool (see Annex 5)*: A participatory mapping tool for use in focus group discussions is used to capture key changes in livelihoods, resultant impact on quality of life, understood as access to resources and severity of coping strategy usage. Using this tool information can be collected at both the settlement as well as county (or sub-county) level. In the majority of cases this tool is used to look at wider county-level FSL trends, with participants purposively selected according to their origin in a specific county, ensuring that key population centers from a county are represented in the FGD. Depending on the county of interest, participants are either new arrivals, traders or host community members. The tool has been shared with FSL partners for review.
- *Service access gap tool (see Annex 6)*: A participatory mapping tool for use in focus group discussions is used to capture level of access to services and service access constraints by sector (Health, WASH, Shelter/NFI, Education, FSL). Using this tool information can be collected at both the settlement as well as county (or sub-county) level. In the majority of cases this tool is used to look at wider county-level service access trends, with participants purposively selected according to their origin in a specific county, ensuring that key population centers from a county are represented in the FGD. Depending on the county of interest, participants are either new arrivals, traders or host community members.

#### *Sampling*

The rationale underpinning the AoK sampling methodology rests on three key parameters:

- 1) Do the research questions require either quantitative or qualitative research methods. If qualitative methods only are required, purposive sampling will be adopted.
- 2) Level of humanitarian access to a geographic area
- 3) Level of access to the population of interest within a geographic area , which is driven by to what extent the displacement context is –
  - a. Dynamic (high levels of population movement) or
  - b. Stable (low levels of population movement)

Appropriate data collection methods will depend on both access and population movements, with sampling being purposive, direct when access is greater and, purposive but remote, as access decreases.

Where sufficient access is unavailable for a given geographic area, remote data collection methodologies can be employed to ensure that information can be collected on a population of concern to meet the identified research questions. The reduced

reliability of data collected remotely is always clearly indicated to facilitate appropriate usage and interpretation of the data analyzed and reported upon. The process of decision-making when selecting a sampling methodology is outlined in Table 2 below.

Table 2 Sampling by levels of access

		LEVEL OF DATA COLLECTION ACCESS		
		No Access	Restricted Access	Access
CONTEXT AND SAMPLING	Dynamic (high population movement)	Purposive Remote key informant interviews Remote participatory mapping	Direct key informant interviews Participatory mapping	Direct key informant interviews Participatory mapping Direct household interviews
	Stable (low population movement)	Purposive Remote key informant interviews Remote participatory mapping	Direct key informant interviews Participatory mapping	Direct key informant interviews Participatory mapping
<i>Data reliability</i>		<b>Medium</b>	<b>Medium-High</b>	<b>High</b>

Given the dynamic and fast-moving nature of the South Sudan crisis, nearly all data collection, falls within the “no access” and “restricted access” parameters, which means in practice the two following purposive sampling methods will be employed:

- Direct KI interviews: Key informants who have knowledge (defined as direct contact with persons living in the settlement in the last month) of a remote-settlement will be interviewed. KIs in this category are expected to be i) newly arrived IDPs, ii) itinerants (traders, NGO officials), and/or iii) individuals who have regular phone/satellite/radio communication with individuals living in the settlement.
- Remote KI interviews through phone calling: REACH will directly interview KIs living in settlements (understood as camp or non-camp settlements) of interest, through phone calling from Juba. KIs are selected through snowball sampling, with each KI recommending additional respondents at the conclusion of each interview. As data collection continues on a monthly basis, it is anticipated that the number of KIs per settlement will increase over time, therefore improving the reliability of data over time.

The selection criteria for a KI, applicable to any KI type, is that s/he has knowledge of a remote settlement from within the last month to ensure that gathered information is up-to-date.

KIs report on the settlement level. A minimum of one KII per settlement is required, and teams will seek to avoid more than 5 KIIs per settlement in order to avoid inefficiencies.

For focus group discussions (FGDs) a purposive approach will also be employed. Field coordinators will seek out people with knowledge of the county in question. For most focus group discussions these can be people with direct or remote contact with the county, however, for displacement FGDs the participants must be new arrivals. Often they must all be from a specific place. Men and women will be interviewed in separate focus group discussions, by a facilitator of the same gender wherever possible.

### 3.4. Data Processing & Analysis

#### *Data quality and cleaning*

*Quantitative data:* Every day, at the end of data collection, the surveys are uploaded on the REACH/IMPACT Kobo-server and downloaded in .xls format as one dataset for a specific site. This dataset is cleaned during the evening, logging deleted entries and value changes, whilst the raw dataset is also stored. Assessment Officers oversee Field Coordinators, who are



in turn responsible for data quality assurance and the supervision of field teams. The following protocols are in place to ensure the quality of data collected:

- Weekly spot checks of enumerators conducting interviews
- Daily data cleaning by Field Coordinators, who identify outliers, abnormalities and logical inconsistencies and give regular feedback to enumerators through monthly and ad-hoc trainings, during spot checks as well as the daily morning brief. Data points which can't be resolved through discussions with enumerators are deleted and when records (surveys) have more than three mistakes, the entire record is deleted from the dataset.
- Weekly data cleaning by Assessment Officers, who review data cleaning conducted by Field Coordinators and provide additional feedback to the data collection teams in the form of re-training.
- Monthly data aggregation and cleaning by GIS/Data Management Officers in Juba, who provide monthly feedback on outliers and common mistakes, which inform the design of monthly debriefs and enumerator trainings.

After all datasets are cleaned, the raw and cleaned dataset, along with the data cleaning log, will be saved and stored in a clearly labelled folder (see data management plan)

*Qualitative data:* all FGD transcripts will be written up and stored in a clearly labelled folder or server.

#### *Data aggregation*

Given more than one quantitative survey may be collected on a given settlement, data from key informants reporting on the same settlement is aggregated to the settlement level using a R script which employs the following logic to calculate settlement-level responses:

#### **Aggregation of KI responses to settlement level:**

During the aggregation stage, each settlement is assigned one value for each question. If there is only one KI for a settlement, their answers automatically become the value for the settlement. If there is more than one KI, the value of the settlement is assigned accordingly:

- **Single response questions:** The majority of survey questions only allow a KI to select a single response. For most of these questions data presented at the settlement level is the most prevalent (modal) response of KIs survey responses from each settlement. In the event there is not a clear majority, for example if 3 KIs report "yes" and 1 reports "no", the settlement is assigned as "yes". However if 2 KIs report "yes" and 2 KIs report "no", the settlement response is coded as No consensus (NC).
- For certain questions, noted in the analysis plan, the modal response is not considered and presence of some responses will super-cede others, this is to ensure that one KI's lack of knowledge about specific issues, for instance, protection concerns, do not cancel out the information that other KIs might know. The specific questions and the particular method of their aggregation will be detailed in the section 5. In these category we have the following sets that prioritise certain responses over others.
  - o "Yes" responses over others
  - o "No" responses over other
  - o Most recent response over other responses
  - o All conflict responses over non-conflict responses
  - o Highest Response over all other responses
  - o For example, if there are three KIs, and one notes that there are unaccompanied children in the settlement, but two say that there are not, the answer will be coded as "Yes" even though more KIs reported "No" because not all KIs might be aware of unaccompanied children within the settlement.
- **Multiple response questions:** Some questions present the KI with multiple responses from which to choose, such as the food regularly eaten by most people in settlement. We disaggregate each possible response option as a single-response and code the logic according to single-response questions. As detailed in section 5 the data presented at the settlement level for these questions are either aggregated using the following two methods:

- The modal approach
- Just like in the Single response questions the most prevalent of the disaggregated possible response options of KIs survey responses from each settlement. In the event there is not a clear majority, the settlement response is coded as No consensus (NC).
  - For example, the response option “Vegetable” is coded as “YES” or “NO” and the most prevalent response from KIs dictate if the response is coded as “YES” or “NO”. In the event there is not a clear majority, for example 5 KIs report “YES” and 5 KIs report “NO”, the settlement response is coded as blank.
  - All the multiple choices selected are included
- For these set of questions all the reported possible response options are reflected while aggregating the settlement data. Even when a response is not the modal response for that disaggregate multiple choice response the “YES” will super-cede the “NO”.
  - For example, the multiple response options for IDPs source of NFIs, if we had 3 different KI and only one mentioned NGOs, NGOs response will still be captured so will other responses the other KIs mentioned such as local community, market.
- All questions will be analysed according to the % of assessed settlements responding for each answer. NC will be included as an option in the total responses for the aggregated data. In the tableau analysis, it will not count towards the existing options, as will ‘don’t know of don’t want to answer’. For instance, for the question “In the last month, were MOST people able to access enough food in [info settlement]?” The final possible values are ‘yes’, ‘no’, ‘no census’ or ‘don’t know/no answer’. When producing a map of adequate access to food, the tableau analysis will only count ‘yes’ answers as ‘adequate access’. Correspondingly, when producing a map of inadequate access to food, the tableau analysis will only count ‘no answers’ as inadequate access.
- **Aggregation of settlement responses to county level:**

Data from settlements is aggregated to the county level using a R script which employs the following logic to calculate county-level responses:

- **Single response questions:** The majority of survey questions only allow a KI to select a single response. Data presented at the county level is the most prevalent response of across all assessed settlements within the county.
- **Multiple response questions:** Some questions present the KI with multiple responses from which to choose, such as the available shelter materials in the settlement. For each possible response, REACH presents the percent of settlements in each county reporting that selected the response.
- **Yes/no questions:** Yes/no questions are presented as the percent of settlements in the county with a response of “yes”.

For data in a county to be considered as representative, at least 5% of settlements in each county must be assessed. If not, then the settlement data can be used for larger, aggregated outcomes, but cannot be used to make broader claims of the county as a whole.

#### Data Validity

As the AoK sampling methodology is not able to ensure that the interview selection of a given settlement within a county can be randomized, REACH institutes a test of homogeneity of responses within each county to ensure that when different settlements are sampled month on month, the settlements within a given area still report relatively similar responses within each county. This is done through an internal test which involved the following:

- Settlements are grouped by their payam, the administrative level below counties.
  - Payams are devised around existing community boundaries, settlements within each payam usually share similar community leadership structures and tend to access the same services (schools, health centres, etc.) as other settlements within the same payam.
- All settlements within each payam are checked for consistency of responses to ensure that settlements within each payam are reporting similar responses.

- The payam coverage within each county is checked to ensure that the same, or almost the same payams within each county are covered each month. For more details see the data validity (over time) section below.

*Data Validity (over time)*

When comparing the results of indicators in counties over time, coverage must be comparable from month to month so that similar settlements are analysed. Since payams are the unit of service provision within an area, this is the unit that will be used for determining the degree of similarity in a county over time.

To determine the degree of similarity over time, the unique number of payams throughout the comparison period will be used as a baseline. This value will be multiplied by the number of months being compared to represent the maximum number of payams that can be assessed. The achieved score will take the sum of the number of payams covered each month. For a payam to qualify for this analysis, at least one settlement must have been assessed from it.

County 1

	Month 1	Month 2	Month 3
Payam A	X		X
Payam B	X	X	
Payam C		X	X

County 2

	Month 1	Month 2	Month 3
Payam A	X	X	X
Payam B	X	X	X
Payam C			

Unique Payams	
Overall	3
Payams assessed	6
Calculation	$6/(3*3)$
Score	66.66%

Unique Payams	
Overall	2
Payams assessed	6
Calculation	$6/(2*3)$
Score	100.00%

For a county to qualify for trend analysis, it must obtain a score of 70% or greater over the time period. When conducting quarterly analysis, this ensures that a county cannot be missing data for a particular month, as it would only be possible to score a maximum of 66% with the remaining months.

$$\text{Consistency Coverage} = \frac{\text{All Assessed Payams score (over a period of time)}}{\text{Total possible assessed Payams score(over a period of time)}}$$

### Data Analysis

For quantitative data gathered, analysis will be conducted using tableau Please see the data analysis plan in Section 5 for the data analysis plan and Map 2 in Annex 8 for an example of how quantitative AoK data is presented. Following the aggregation of the data, it will then be fed into a tableau tool, which will be used as a tool to easily analyse indicators at the aggregate, state, or county level.

When aggregating to regional and state level, data will be weighted by total settlements in a county and county coverage to ensure that counties more heavily sampled than others relative to their number of settlements are not given a greater weight. To do this, a weighted arithmetic mean will be applied to all counties to ensure that the results give a proper weight to county relative to its number of settlements. Any counties that do not meet the 5% threshold are dropped from the analysis.

### Aggregated Regional

$$= \frac{(\text{County total}_{C1} \times \text{County AoK percentage}_{C1}) + (\text{County total}_{C2} \times \text{County AoK percentage}_{C2}) + \dots}{\text{County total}_{C1} + \text{County total}_{C2} + \dots}$$

County total = total number of settlements in a county

County percentage = percentage of interest for that county (e.g. the percentage of assessed settlements reporting adequate access to food)

The measures will be produced by aggregating the county measures based on their weights in order to ensure that oversampled counties are not overrepresented in the final outcomes for each indicator. Thematic analysis will be used to code and analyse FGD transcripts from semi-structured data collection.

Because there is no way to ensure that settlements are selected at random, strong representative claims cannot be made regarding the findings of the data. However, several rules are imposed against the data to ensure that the data is not used to misrepresent claims:

- Conditions for validity within each county (described above) must be met
  - Changes over time of less than 10 percentage points will be reported as 'similar' rather than as a decrease or increase
  - A 5% baseline is assumed to be enough of the county to provide an approximate estimate of conditions within the county
  - All data is to be reported as, "assessed settlements" in order to ensure that no broader claims regarding representativeness are made.
  - No-consensus, no answer and not applicable responses are all included, so that the total number of assessments is always all assessed settlements.
  - If settlements are filtered out due to not being asked a question through skip logic, it will be clearly stated in the reporting.
  - To compare a county or group of counties over time, each month being assessed must contain the exact same counties for each month (so each county must have reached the 5% assessment threshold) in order to be compared.
- The area being reported on (either the State, the region, or "assessed counties in the state" must be clearly defined so as not to misrepresent the findings.<sup>6</sup> Other areas involving several counties (such as the, "Greater Akobo area" need to be clearly defined in products as well.

<sup>6</sup> For instance, REACH AoK meets coverage in all but three counties (Canal/Pigi, Pibor, and Pochalla Counties) every month. This is a consistent area that accounts for almost, but not all of the state, so to talk about the findings as a whole, the phrase "assessed counties in the state" or something similar should be used.

Outputs produced

The main outputs produced from the monthly Assessment of Hard to Reach Areas Are Situation Overviews and sector factsheets. Situation Overviews provide quarterly state-level analysis on displacement and population movement trends as well as access to food and basic services for both IDP and non-displaced communities in a given state. The sector-specific factsheets provide an overview over access to services trends and needs in each sector (FSL/Protection/CCCM/WASH/Education/Shelter/NFI), with the majority of data presented at county-level. For information on other types of outputs produced using AoK data, please see Section 1.

## 4. Roles and responsibilities

Table 3: Description of roles and responsibilities

For an explanation of REACH acronyms see Annex 7

Task Description	Responsible	Accountable	Consulted	Informed
Research design	AM	Country Coordinator (CC)	AO, GIS team, Geneva review team	Clusters, OCHA
Supervising data collection	Field Coordinator	Assessment Officer (AO)	AM	CC
Data processing (checking, cleaning)	Field coordinator	Assessment Officer	AM + GIS	CC
Data analysis	Assessment Officer	Assessment Manager (AM)	AM + GIS, Geneva review team	CC
Mapping	Assessment Officer, GIS Team	AM	CC, Geneva review team	
Output production	Assessment Officer	AM	CC, Geneva review team	CM
Facsheets	GIS	GIS +AO	AM Geneva Review Team, GIS Team, AM, Geneva Review Team	
Situation Overview	AO	AO	Geneva Review Team	CM
Dissemination	CM + AO	CC	SMT	
Monitoring & Evaluation	AO + CM	SMT	CC	
Lessons learned	CM	CC	Country Team	Geneva Office.

**Responsible:** the person(s) who executes the task

**Accountable:** the person who validates the completion of the task and is accountable of the final output or milestone

**Consulted:** the person(s) who must be consulted when the task is implemented

**Informed:** the person(s) who need to be informed when the task is complete

## 4. Work Plan: Data Collection, Data Analysis and Product Production Cycle

As REACH's data collection capacity has expanded across South Sudan to 15 different locations, the need to standardize and harmonize all of its separate data collection cycles into a single process has grown in importance. The REACH Data collection cycle will be rolled out in September 2018, and will ensure that all field sites and the Juba office follow the same data collection cycle to ensure standard and timely collection, processing, and analysis of data, as well as the regular processing of data. The Data Collection, Data Analysis, and Product Production Cycles will all be integrated along a three-month period in half-week units with hard deadlines. The data collection cycle will last 1 month, which the product production cycle takes 3 months. The specifics of Each cycle and its timetables are detailed below:

### *Data Collection Cycle:*

*Training:* On the 1<sup>st</sup> of each month, training will be conducted in each Field base using the new tool developed for that month by the GIS team after the approval of the Country Coordinator and Amok Assessment manager. This will have downloaded onto the smart phones in each base by the Assessment Officers and Field Coordinators. Training will take one half day.

*Data Collection:* Data collection occurs on every working day of the month (~20 days each month), beginning the day after training. Data collection lasts for the 1<sup>st</sup> half of each day, from 8:30 until 13:00 every day. Between 14:00 and 17:30, the data is downloaded and cleaned by the Field Coordinators and Assessment Officers. The analysis includes:

- Checking the time of the interviews and the GPS locations of where they were taken
- Checking that enumerators are not duplicating answers
- Checking that the survey responses are in line with the FCs'/AOs' contextual understanding of the assessed settlements
- Checking for illogical inconsistencies between responses (ex: Enumerators report there is sufficient food in the settlement but also that people in the settlement are skipping meals).
- Geolocation new settlements using the REACH online map.

The Data cleaning cycle follows a weekly cleaning rotation, involving the Field Coordinators, Assessment Officers, and Area managers. The cycle follows in half-week segments, with roles and responsibilities defined as follows:

*Field Coordinators:* Between 14:00 and 17:30 each week day, Field Coordinators clean data and map new settlements. Coordinates for the new settlements are added to an internal google sheet, which the GIS team adds to a larger dataset at the end of each month. Issues are corrected with the Assessment Officer's supervision and feedback is given to the enumerator teams at the data is submitted at the end of the week to The Assessment Officer.

*Assessment Officer:* The Assessment Officer conducts their own check of the data at the beginning of each week, and also cleans and changes the data, as well as notes any settlements that have not been mapped by the field coordinator. The AO then goes over all of the changes made with the field coordinator.

*Assessment Manager:* The Assessment Manager conducts a spot check of the data at the end of the week after the AO has submitted the data to them. The Assessment manager checks whether a sufficient data cleaning has been done and if all the settlements have been mapped.

The final data is cleaned and submitted on the last day of the month by the AO. Given the regular data cleaning going on a daily basis, this should not be the time intensive issue that it has been in the past. The data is sent on to the GIS team.

*GIS Team:* The GIS Team conducts the final Data check during the first half of the first week of the next month. During this time, the data is checked to sure that all new settlements have been added to the dataset and that there are no major problems with the data. The GIS team then aggregates the data together, standardizes the datasets into a single, countrywide dataset at the settlement level, and feeds the data into a Tableau analysis sheet for field teams to use for their written products.

*GIS Tool Bug Fix Cycle:* Bug fixes are identified throughout the month of data collection and are added to a google sheet where proposed tool changes can be documented in an internal tool change sheet. All proposed tool changes must be submitted before the end of the third week of data collection. During the first half of the fourth week of data collection, the GIS team, in conjunction with the Assessment Managers and Country Coordinator decide which changes to make to the tool. The tool is re-deployed and tested in the second half of the fourth week of data collection, and then deployed to all teams on the last day of the month.

*Product Production Cycle:*

*Factsheets:* Factsheets are produced by the GIS team using the Tableau analysis tool – as the templates are already validated, products can be produced and approved within a day.

*Situation Overviews:* Situation Overviews are to be produced very quickly. They will be produced quarterly, and cover the three-month period prior to the assessment. Situation Overview development will be following the following Cycle:

- *SO preliminary Drafting:* 1 month prior to the end of the three-month cycle of data collection, begin compiling the materials and doing preliminary research, noting the main key trends and anticipated focus of the Situation Overview.
- *SO Drafting:* After the final collection and compilation of the data for the entire 3-month cycle, the AO has 2 weeks to produce a first draft of the SO. These need to be submitted to the Assessment Manager by the end of the 2<sup>nd</sup> week.
- *SO Review:* SO are reviewed by the Senior Assessment Officer during the first two working days of the 3<sup>rd</sup> week of the month – feedback should be more detailed than in previous data collection cycles in order to lessen the burden on the GVA team and Country Coordinator. Corrections should be made during the 2<sup>nd</sup> half of the 3<sup>rd</sup> week. These reviews should focus on:
  - o Presentation of Data (using the correct visual aids for the most effective purpose and avoiding repetition of data)
  - o Spelling and grammar
  - o Effective organization information and usage of data
  - o Correct usage of % thresholds and representation of data
- SOs are reviewed by the Assessment Manager as a second check during the first half of the fourth week. These corrections will be made during the same half week and then submitted to the Country Coordinator for a final Check.
- The County Coordinator reviews and submits feedback during the second half of the fourth week. Corrections are made during the same half week. It is then submitted to the GVA review team.
- The Geneva review team will be notified by the AoK project focal point, who will let them know 1 week in advance when products are expected to arrive for review, so that the Geneva Review Team can prioritize.
- SOs submitted to Geneva are reviewed during first half of the 5<sup>th</sup> week of the month. The rest of the fifth week is to be used for any additional rounds of edits prior to publication.
- The SO should be published during the 6<sup>th</sup> week.

All published documents are shared on the reach resource centre ([www.reachresourcecentre.info](http://www.reachresourcecentre.info)) Relief Web (<https://reliefweb.int/>) and through REACH's in-country mailing list (managed by the REACH Communications Manager).

## Data Collection Schedule

Task	Responsible	Month Week Half of Week	Month 1								Month 2								Month 3							
			Week 1		Week 2		Week 3		Week 4		Week 1		Week 2		Week 3		Week 4		Week 1		Week 2		Week 3		Week 4	
			1st	2nd	1st	2nd	1st	2nd	1st	2nd	1st	2nd	1st	2nd	1st	2nd	1st	2nd	1st	2nd	1st	2nd	1st	2nd	1st	2nd
			1st	2nd	1st	2nd	1st	2nd	1st	2nd	1st	2nd	1st	2nd	1st	2nd	1st	2nd	1st	2nd	1st	2nd	1st	2nd	1st	2nd
Training	AO/FC																									
Data Collection	AO/FC																									
Data Cleaning	FC																									
Data Checking	AO																									
Data Checking Clean Data submission	AM																									
AO	AO																									
Settlement Mapping	FC																									
Bug Tool Reporting	AO/FC																									
Bug Tool Fix	GIS																									
Tool Deployment	GIS																									
GIS final data check	GIS																									
Data Aggregation	GIS																									
Data Analysis	GIS																									
Data Review	DRT																									
Data Validation	DRT																									
Sectorial Factsheets SO Preliminary drafting	GIS																									
AO	AO																									
SO Drafting	AO																									
SO Review	SAO																									
SO Review	AM																									
SO Review	CC																									
SO Review	GVA																									
SO Publication	AO																									



## 5. Data Analysis Plan

### 5.1 Analysis plan for structured multi-sector survey

Topic	Sector	Data collection method	Q #	Indicator / Variable	Question	Choices	Data collection level	No-Consensus Weighting <sup>7</sup>
Population characteristics	KI demographics	Quantitative KI interview	B.1	Gender of KI	What is the gender of the interviewee?	Male, Female	Individual level	N/A
			B.2	Age of KI	What is your age?	Continuous, 15 < x <126	Individual level	N/A
			B.3	Displacement status (categorical, IDP, refugee, returnee, host community)	What is your current displacement status?	IDP, refugee, returnee, host community	Individual level	N/A
	Area of knowledge	Quantitative KI interview	D.1	KI area of knowledge, state (categorical)	What is the location in?	List of states	Individual level	N/A
			D.2	KI area of knowledge, county (categorical)	What county is the location in?	List of counties	Individual level	N/A
			D.3 / D.4	KI area of knowledge, settlement (categorical)	What settlement is the location in? If other, please specify	List of settlements; other	Individual level	N/A
			D.5	KI type of contact	In the last month, how did you get knowledge about [info settlement]	Remote contact, direct contact	Individual-level	N/A
			D.6	KI type of contact	In the last month, what did you use to make contact with someone living in [info settlement]?	mobile phone, satellite phone, computer internet, mobile phone app, HR or VHF radio, other, don't know	Individual-level	N/A
			D.7	KI time of last information received from settlement	into confirm, you have either visited [info settlement]? IN THE LAST MONTH, or talked remotely with someone living in [infosettlement] IN THE LAST MONTH?	Within the last month, more than a month	Individual-level	N/A
			Demographics	Quantitative KI interview	F1.1	% of (de)populated settlements	In the last month, were ANY members of the local [ORIGINAL] community still living in [info settlement]?	Yes, no, I don't know or don't want to answer
	F1.2	% of settlements per proportion of remaining population			In the last month, what proportion of the ORIGINAL population remains in [info settlement]?	less than half, half, more than half, I don't know or don't want to answer	Settlement-level	All responses are Equal (modal weighting)

<sup>7</sup> In the event of a No-consensus with conflicting answers, all responses are weighted more heavily than, "I don't know or I don't want to answer."

			F2.1	% of settlements with IDPs	In the last month, were ANY IDPs living in [info settlement]?	Yes, no, I don't know or don't want to answer	Settlement-level	Yes > all other responses
			F2.2	% of settlements per given proportion of IDP population	In the last month, what proportion of the population were IDPs in [info settlement]?	less than half, half, more than half, I don't know or don't want to answer	Settlement-level	All responses are Equal (modal weighting)
			F2.3	% of settlements per IDP date of most recent arrival	When did the MOST RECENT IDPs arrive in [info settlement]?	Last 3 months, 3 to 6 months, 6 to 12 months, More than 1 year, don't know	Settlement-level	Most recent response > other responses.
			F2.4	% of settlements with IDPs	Do you know where the MOST RECENT IDPs came from in [info settlement]?	Yes, no, I don't know or don't want to answer	Settlement-level	All responses are Equal (modal weighting)
			F2.5	% of settlements per main state of present IDP's displacement	What state are the IDPs mainly from since the beginning of the crisis?	List of states	Settlement-level	All responses are Equal (modal weighting)
			F2.6	% of settlements per main county of present IDP's displacement	What county are the IDPs mainly from?	List of counties	Settlement-level	All responses are Equal (modal weighting)
			F3.1	% of settlements with returned (formerly displaced) community population	Have ANY local community returned to [info settlement] after being displaced in another area since the beginning of the crisis?	Yes, no, I don't know or don't want to answer	Settlement-level	Yes > other responses
			F3.2	% of settlements per month of returnee arrival	When did the MOST RECENT returnees arrive in [info settlement]?	Last 3 months, 3 to 6 months, 6 to 12 months, More than 1 year, don't know	Settlement-level	All responses are Equal (modal weighting)
Sector Indicators	Food Security	Quantitative KI interview	G.1	% of settlements by adequate access to food	In the last month, were MOST people able to access enough food in [info settlement]?	Yes, no, I don't know or don't want to answer	Settlement-level	Most recent response > other responses.
			G.2	% of settlements per main reason populations do not adequately access food	What is the main reason why people can't access enough food in [info settlement]?	Unsafe to access land; not enough land; crops destroyed by flooding; crops destroyed by pest; lack of rain; crops destroyed by conflict; cultivation disrupted by displacement; growing season too short; crops stolen; no livestock; no food distribution; no market; prices too high; lack of fishing nets; no reason, I don't know or don't want to answer; other	Settlement-level	All Conflict options > Non-conflict options
			G.3	% of settlements per main types of food	In the last month, what types of food were REGULARLY	Cereals and roots; beans, groundnuts, other nuts; fruit, cultivated and wild;	Settlement-level	Multiple choice: All responses are Equal (modal weighting)

			eaten by MOST people in [info settlement]?	meat and eggs; milk and dairy; I don't know or don't want to answer		
G.4	% of settlements per main source of food	In the last month, where did MOST people get their food from in [info settlement] now?	Own production (cultivated); own production (livestock); foraged for wild foods; fishing; hunting; bought with cash; bartering; family and friends; humanitarian assistance; government food distribution; food/cash for work; nothing; I don't know or don't want to answer; other	Settlement-level	All responses are Equal (modal weighting)	
G.5	% of settlements per frequency of wild food consumption	In the last month, did MOST people eat wild foods as part of a main meal in [info settlement]?	Almost all the time; sometimes; almost never; I don't know or don't want to answer	Settlement-level	Yes > All other responses	
G.6	% of settlements per proportion of main meals consisting of wild foods	In the last month, what proportion of main meals included wild foods for MOST people in [info settlement]?	Less than half; half; more than half; don't know	Settlement-level	All responses are Equal (modal weighting)	
G.7	% of settlements per consumption of wild food causing sickness	In the last month, did any people consume wild foods that made them sick in [info settlement]?	Yes, no, I don't know or don't want to answer	Settlement-level	Yes > All other responses	
G.8	% of settlements per average number of meals	In the last month, how many meals did MOST people consume per day in [info settlement]?	Less than 1, 2, 3, 3+, I don't know or don't want to answer	Settlement-level	All responses are Equal (modal weighting)	
G.9	% of settlements with access to food assistance, per type	In the last THREE months, have ANY people received food assistance (general food distribution/food for work/cash for work) FROM [info settlement]?	Yes, no, I don't know or don't want to answer	Settlement-level	Yes > All other responses	
G.10	% of settlements with access to a functioning market	In the last month, was there ANY functional market you could walk to available FROM [info settlement]?	Yes, no, I don't know or don't want to answer	Settlement-level	Yes > All other responses	
G.11	% of settlements per type of impact of cereal prices on food access	In the last month, was there an increase in the price of CEREALS (sorghum, maize, milled, etc.) [info settlement]?	No impact; small impact; large impact; I don't know or don't want to answer	Settlement-level	All responses are Equal (modal weighting)	
G.12	% of settlements per food consumption coping strategy	In the last month, when there was not enough food in [info settlement] what did ANY people do to make it last	Rely on less preferred and less expensive food; limit portion sizes at meal times; adults do not eat so children can eat; reduce	Settlement-level	Multiple choice: All responses selected are included	

				longer? (read options out loud)	number of meals eaten in a day; skip entire days without eating; none; other; I don't know or don't want to answer		
Livelihoods	Quantitative KI interview	H.1	% of settlements per livelihood coping strategy (e.g. borrow food, consume seeds, sell cattle)	In the last month, when there was not enough food in [info settlement] what did ANY people do to find new sources of food? (read options out loud)	Borrow food; purchase food; gather wild food; consume seed stock; send children to eat with neighbours; asking non-relatives for food; sell home assets; selling more livestock than usual; slaughtering more cattle than normal; more hunting or fishing than normal; families moving to cattle/fishing camps; sending families to displacement camps; none; other; I don't know or don't want to answer	Settlement-level	Multiple choice: All responses selected are included
		H.2	% of settlements per current livelihood activities (e.g. crops for sustenance, livestock)	In the last month, did MOST people engage in the following activities in [info settlement]? (read options out loud)	Crops for cash; crops for sustenance; livestock; fishing or hunting; casual labour; earning salaries; remittances; poultry; other; none; I don't know or don't want to answer	Settlement-level	Multiple choice: All responses are Equal (modal weighting)
		H.3	% of settlements with access to land for cultivation	In the last month, did MOST people have access to ANY land for cultivation in [info settlement]?	Yes, no, I don't know or don't want to answer	Settlement-level	No > All other responses
		H.4	% of settlements with sufficient access to seeds, tools, etc.	Is the last month, did MOST people have access to ENOUGH seeds / tools / etc. in [info settlement] now?	Yes, no, I don't know or I don't want to answer	Settlement-level	No > All other responses
		H.5	% of settlements reporting cattle ownership	In the last month, did MOST people own ANY cattle in [info settlement] ?	Yes, no, I don't know or don't want to answer	Settlement-level	All responses are Equal (modal weighting)
		H.6	% of settlements with access to cattle	In the last month, were MOST people able access ANY cattle (could they reach the cattle) FROM [info settlement]?	Yes, no, I don't know or don't want to answer	Settlement-level	All responses are Equal (modal weighting)
		H.7	% of settlements with livestock disease outbreak	In the last month, has there been a disease outbreak among ANY livestock owned by the people in [info settlement]?	Yes, no, I don't know or don't want to answer	Settlement-level	Yes > All other responses

WASH	Quantitative KI interview	H.1	% of settlements with(out) boreholes	In the last month, were ANY boreholes present in [info settlement]?	Yes, no, I don't know or don't want to answer	Settlement-level	All responses are Equal (modal weighting)
		H.2	% of settlements with(out) <i>functioning</i> boreholes	In the last month, were ANY boreholes functional (not broken) in [info settlement]?	Yes, no, I don't know or don't want to answer	Settlement-level	All responses are Equal (modal weighting)
		H.3	% of settlements per type of main source of drinking water	In the last month, what was the MAIN source of drinking water (clean or unclear) for people in [info settlement]?	Borehole, tap stand, well, water truck, donkey cart, water yard, swamp, pond, river, I don't know or don't want to answer, other	Settlement-level	All responses are Equal (modal weighting)
		H.4	% of settlements per time to collect drinking water	In the last month, how long does it take MOST people to reach, access, and return from the [water now how] with water in [info settlement]?	Under 30 min; 30 min – less than 1 hour; 1 hour to less than half a day; half a day; more than half a day; I don't know or don't want to answer	Settlement-level	All responses are Equal (modal weighting)
		H.5	% of settlements where animals share same source of drinking water as humans	In the last month, were ANY livestock or other animals using the same [water now how] as people, or kept close to the same [water now how]?	Yes, no, I don't know or don't want to answer	Settlement-level	Yes > all other responses
		H.6	% of settlements unable to access preferred water point because of safety concerns	Have you not been able to access you preferred water point because you feared for your safety?	Yes, no, I don't know or don't want to answer	Settlement-level	Yes > all other responses
		H.7	% of settlements per availability of water source in both wet and dry season	Is the preferred water source available in both wet and dry season in [info settlement]?	Yes, no, I don't know or don't want to answer	Settlement-level	All responses are Equal (modal weighting)
		H.8	% of settlements were people are using latrines	In the last month, were ANY people using latrines in [info settlement]?	Yes, no, I don't know or don't want to answer	Settlement-level	Yes > all other responses
		H.9	% of settlements per proportion of people using latrines	In the last month, what proportion of people were using latrines in [info settlement]?	None, less than half, half, more than half, all, I don't know or don't want to answer	Settlement-level	All responses are Equal (modal weighting)
		H.10	% of settlements per reason people not using latrines	In the last month, what was the MAIN reason people were not using latrines in [info settlement]?	None available, not functional, not enough/overcrowded, too dirty/full, too far to reach quickly, cultural reasons, too far to access safety don't know or don't want to answer	Settlement-level	All responses are Equal (modal weighting)
		H.11	% of settlements per means of washing hands	In the last month, what were MOST people using to wash their hands in [info settlement]?	Soap, ash, only water, don't wash hands, I don't know or don't want to answer	Settlement-level	All responses are Equal (modal weighting)
				J.1	% of settlements per main shelter type used by local community	What is the most common shelter type currently used by	Permanent structure; tukul; rakooba; tent; improvised

				the local community in [info settlement]?	shelter; abandoned building; community building; no shelter; no other type of shelter; I don't know or don't want to answer; other		
Shelter/NFI	Quantitative KI interview	J.2	% of settlements per type of host community shelter	Where is the largest proportion of the local community living in [info settlement]?	Their own homes; another home in the same village; community buildings; bush/swamp/forest/hills; I don't know or don't want to answer; other	Settlement-level	All responses are Equal (modal weighting)
		J.3	% of settlements per main shelter type used by IDPs	What is the most common shelter type currently used by IDPs in [info settlement]?	Permanent structure; tukul; rakooba; tent; improvised shelter; abandoned building; community building; no shelter; no other type of shelter I don't know or don't want to answer; other	Settlement-level	All responses are Equal (modal weighting)
		J.4	% of settlements per type of host community shelter (e.g. community building)	Where is the largest proportion of IDPs living?	PoC; host community; community buildings; in the bush; I don't know or don't want to answer; other	Settlement-level	All responses are Equal (modal weighting)
		J.5	% of settlements where IDPs are living in the open without shelter	In the last month, were ANY IDPs living in the open without shelter in [info_settlement]?	Yes, no, I don't know or don't want to answer	Settlement-level	Yes > all other responses
		J.6	% of settlements per proportion of IDPs without shelter	In the last month, what proportion of IDPs are living in the open without shelter in [info settlement]?	Less than half, half, more than half, I don't know or don't want to answer	Settlement-level	All responses are Equal (modal weighting)
		J.7	% of settlements per available shelter materials	In the last month, what shelter building materials were available to forage or purchase for MOST people in [info settlement]?	Grass, mud, timber, robe, plastic sheet, local pole, none, I don't know or don't want to answer, other	Settlement-level	Multiple choice: All responses selected are included
		J.8	% of settlements with shelter destruction in previous month	In the last month, were ANY shelters destroyed or partially destroyed in [info settlement]?	Yes, no, I don't know or don't want to answer	Settlement-level	Yes > all other responses
		J.9	% of settlements per proportion of destroyed shelters	In the last month, what proportion of shelters were destroyed because of fighting in [info settlement]?	Very few; around half; all/almost all; I don't know or don't want to answer	Settlement-level	All responses are Equal (modal weighting)
		J.10	% of settlements where flooding has displaced people	In the last month, was there ANY flooding (which made people leave their home and sleep somewhere else) in [info settlement]?	Yes, no, I don't know or don't want to answer	Settlement-level	Yes > all other responses

			J.11	% of settlements per NFI available to IDPs	In the last month, what non-food-items were used by IDPs in [info settlement]?	Blanket, sleeping mat, jerry can, cooking pot, mosquito net, bucket, soap, none, IDP, other	Settlement-level	Multiple choice: All responses selected are included
			J.12	% of settlements per source of NFI for IDPs	How did IDPs get the available NFIs in [info settlement]?	Brought with them; purchased in market; provided by host community; NGOs; I don't know or don't want to answer; other	Settlement-level	Multiple choice: All responses selected are included
			J.13	% settlements per most needed NFI items by IDPs in the settlement	In the last month, what was the MAIN non-food-item needed by IDPs in [info settlement]?	Blanket, sleeping mat, jerry can, cooking pot, mosquito net, bucket, soap, plastic sheet, rope, pole, don't know, other.	Settlement-level	All responses are Equal (modal weighting)
			J.14	% of settlement with NFI distribution in previous 3 months	In the last three months, has there been a distribution of NFIs in [info settlement]?	Yes, no, I don't know or don't want to answer	Settlement-level	Yes > All other responses
	Protection	Quantitative KI interview	N.1	% of settlements per perception of safety of community members	In the last month, did MOST people feel safe MOST of the time in [info settlement]?	Yes; no; don't know	Settlement-level	All responses are Equal (modal weighting)
			N.2	% of settlements with conflict incident with casualties in last month	In the last month, has there been ANY incidence of conflict in [info settlement] which has either killed a civilian in [info settlement]?	Yes, no, I don't know or don't want to answer	Settlement-level	Yes > All other responses
			N.3	% of settlements with incidents of looting occurred in last month	In the last month, has there been ANY incident of property looting (where most property was stolen from one or more households) in [info settlement]?	Yes, no, I don't know or don't want to answer	Settlement-level	Yes > All other responses
			N.4	% of settlements per main safety concern for women / men	In the last month, what was the main safety concern for (women/men) 18 years or older in [info settlement]?	Killing/injury same tribe; killing/injury other tribe; sexual violence; abduction; forced recruitment; looting; cattle raids; family separation; domestic violence; harassment to disclose information; violence between neighbours; no issue; I don't know or don't want to answer; other	Settlement-level	All responses are Equal (modal weighting)
			N.5	% of settlements per main safety concern for girls / boys	In the last month, what was the main safety concern for (girl/boys) 18 years or older in [info settlement]?	Killing/injury same tribe; killing/injury other tribe; sexual violence; abduction; forced recruitment; looting; cattle raids; family separation; early/forced	Settlement-level	All responses are Equal (modal weighting)

					marriage; domestic violence; harassment to disclose information; violence between neighbours; no issue; I don't know or don't want to answer; other		
		N.6	% of settlements with unaccompanied children living in settlement	In the last month, were there ANY children with no caretaker or relative looking after them living in [info settlement]?	Yes, no, I don't know or don't want to answer	Settlement-level	Yes > All other responses
		N.7	% of settlements per status of current relations between host and IDP communities	In the last month, how were relations between MOST IDPs/refugees/returnees and the local community in [info settlement]?	good; neutral; poor; I don't know or don't want to answer	Settlement-level	All responses are Equal (modal weighting)
		N.8	% of settlements with disputes over land ownership	In the last month, were there ANY disputes about land ownership for people in [info settlement]?	Yes; No; Don't Know	Settlement-level	Yes > All other responses
Landmine and UXO	Quantitative KI interview	O.1	% of settlements community believes has mines of UXO	In the last month, were there ANY areas believed to have mines or UXO in [info settlement]?	Yes, no, I don't know or don't want to answer	Settlement-level	Yes > All other responses
		O.2	% of settlements per area believed to be contaminated by mines	In the last month, what were all the areas believed to be contaminated by mines or UXO in [info settlement]?	Housing, school, medical point, water point, river; cropping land; grazing land; firewood gathering location; roads; other; I don't know or don't want to answer	Settlement-level	Multiple choice: All responses selected are included
		O.3	% of settlements per frequency of landmine/UXO accidents	In the last month, how many landmine/UXO related accidents happened in [info settlement], including both accidents with civilians and livestock?	None; a few (1-2); some (3-5); several (6-10); many (10+); I don't know or don't want to answer	Settlement-level	Highest Response > All other responses
Shocks	Quantitative KI interview	S.1	% of settlements per severity of hunger experienced	In the last month, how bad was the hunger for MOST people because they were not able to access enough food in [info settlement]?	Almost no hunger; hunger is small, strategies are available to cope with reduced access to food; hunger is bad, limited options to cope; hunger is the worst, all over the settlement, causing many deaths; I don't know or don't want to answer	Settlement-level	All responses are Equal (modal weighting)
		S.2	% of settlements per type of impact of IDP influx on food security	In the last month, has the arrival of IDPs or returnees had any impact on the ability	No impact, small impact, large impact, I don't know or don't want to answer	Settlement-level	All responses are Equal (modal weighting)



				to access enough food for MOST people in [info settlement]?			
		S.3	% settlements per type of impact of increase in cereal prices on food security	In the last month, has the increase in cereal price had any impact on the ability to access enough food for MOST people in [info settlement]?	No impact, small impact, large impact, I don't know or don't want to answer	Settlement-level	All responses are Equal (modal weighting)
		S.4	% of settlements per type of impact of disease on food security	Have livestock disease outbreaks in the last month had any impact on the ability to access enough food in [info settlement]?	No impact, small impact, large impact, I don't know or don't want to answer	Settlement-level	All responses are Equal (modal weighting)
		S.5	% settlements per type of impact of health problems on food security	In the last month, has [health problem] had any impact on the ability to access enough food for MOST people in [info settlement]?	No impact, small impact, large impact, I don't know or don't want to answer	Settlement-level	All responses are Equal (modal weighting)
		S.6	% of settlements per type of impact of safety concerns on food access	Has conflict or looting had any impact on the ability to access enough food in [info settlement]?	No impact, small impact, large impact, I don't know or don't want to answer	Settlement-level	All responses are Equal (modal weighting)
Health	Quantitative KI interview	I.1	% of settlements with access to health facilities	In the last month, were there ANY health care services people could walk to available FROM [info settlement]?	Yes, no, I don't know or don't want to answer	Settlement-level	All responses are Equal (modal weighting)
		I.2	% of settlements per distance of health facility	In the last month, how long did it take for MOST people to access health care services by foot FROM [info settlement]?	Under 30 minutes; 30 min – less than an hour; 1 hour – less than half a day; half a day; more than half a day; I don't know or don't want to answer	Settlement-level	All responses are Equal (modal weighting)
		I.3	% of settlements per main reason health facility unavailable	In the last month, what was the MAIN reason health care services were not available FROM [info settlement]?	Never health facilities nearby; no health care workers in the area; no medicine; area too insecure; facilities destroyed by fighting; facilities destroyed by natural disaster; facilities too distant; nothing; other; I don't know or don't want to answer	Settlement-level	All responses are Equal (modal weighting)
		I.4	% of settlements with nutrition programming	In the last month, were ANY feeding programmes that provided Plumpy Sup, CSB++ or other nutrition items available FROM [info settlement]?	Yes, no, I don't know or don't want to answer	Settlement-level	Yes > All other responses

		I.5	% of settlements per most common health problem	In the last month, what was the MAIN health problem for people in [info settlement]?	Malaria; breathing problems; malnutrition; wounds from fighting; diarrhoea; stomach pain; fever; cholera; pneumonia; typhoid; tuberculosis; kalazar; skin disease; brucellosis; chicken pox; syphilis; AIDS/HIV; bilharzia; hepatitis; anal haemorrhage; nodding disease; no common health problems; other; I don't know or don't want to answer	Settlement-level	All responses are Equal (modal weighting)	
		H.1	% of settlements per perceived main cause of death in past month	In the past month, what has been the main cause of death in [info settlement]?	Malaria/fever; cholera/diarrhoea; hunger/malnutrition; kalazar; conflict; natural causes of death; HIV/AIDS; other; nothing; I don't know or don't want to answer	Settlement-level	All responses are Equal (modal weighting)	
		H.2	% of settlements with excess mortality in past month	In the last month, have more people of any age died than in the months BEFORE for any reason in [info settlement]?	Yes, no, I don't know or don't want to answer	Settlement-level	All responses are Equal (modal weighting)	
	Education	Quantitative KI interview	M.1	% of settlements with access to education services	In the last month, were ANY educational services people could walk to available FROM [info settlement]?	Yes, no, I don't know or don't want to answer	Settlement-level	All responses are Equal (modal weighting)
			M.2	% of settlements per main reason that education services unavailable	In the last month, what was the MAIN reason that education services were not available FROM [info settlement]?	Never facilities nearby; facilities destroyed by natural disaster; facilities destroyed by conflict; facilities being used for other purposes; never any teachers; teachers displaced; teachers stopped working; security concerns; facilities too distant; nothing; I don't know or don't want to answer; other	Settlement-level	All responses are Equal (modal weighting)
			M.3 (a and b)	% of settlements where girls/boys are attending school	In the last month, were ANY 6-17 year old (GIRLS/BOYS) attending school in [info settlement]?	Yes, no, I don't know or don't want to answer	Settlement-level	Yes > All other responses
			M.4 (a and b)	% of settlements per proportion of girls / boys (asked separately) attending school	In the last month, what proportion of 6-17 year (	None; less than half; half; more than half; all; I don't	Settlement-level	All responses are Equal (modal weighting)

				GIRLS/BOYS were attending school in [info settlement]?	know or don't want to answer		
		M.5	% of settlements per main reason girls are not attending school	In the last month, what was the MAIN reason girls are not attending school in [info settlement]?	Cannot afford fees; need to work outside home; need to work in home; girls are not supposed to attend school; hunger; area too dangerous; no school supplies; issues related to menstruation; no reason; I don't know or don't want to answer; other	Settlement-level	All responses are Equal (modal weighting)
		M.6	% of settlements per main reason boys are not attending school	In the last month, what was the MAIN reason boys are not attending school in [info settlement]?	Cannot afford fees; need to work outside home; need to work in home; girls are not supposed to attend school; hunger; area too dangerous; no school supplies; issues related to menstruation; no reason I don't know or don't want to answer; other	Settlement-level	All responses are Equal (modal weighting)
CCCM	Quantitative KI interview	R.1	% of settlements where IDPs are receiving support from the host community	In the last month, were MOST IDPs receiving food, NFIs, or shelter, from the local community or an NGO in [info settlement]?	Yes, no, I don't know or don't want to answer	Settlement-level	No > All other responses
		R.2	% of settlements where RRC office or representative are accessible	In the last month, were local authorities present and RESPONSIBLE for IDPs in [info settlement] (RRC/ROSS)	Yes, no, I don't know or don't want to answer	Settlement-level	All responses are Equal (modal weighting)
		R.3	% of settlements with community leadership present	In the last month, was ANY community leader present in [info settlement] (committees, village leaders, etc.)?	Yes, no, I don't know or don't want to answer	Settlement-level	All responses are Equal (modal weighting)
		R.4	% of settlements with different groups represented in local leadership structures	In the last month, which of the following groups were represented in local leadership in [local settlement] (read options out loud)	Youth, Women, Elderly, Disabled, None (multiple choice)	Settlement-level	Multiple choice: All responses are Equal (modal weighting)
		R.5	% of settlements where IDPs are (not) included in leadership structures	In the last month, were ANY IDPs included in committees or leadership structures in [info settlement]?	Yes, no, I don't know or don't want to answer	Settlement-level	No > All other responses
		R.6	% of settlements per frequency of leadership meeting	How often does the community leadership meet in [info settlement]?	Every week, every two weeks, every month, every few months, In	Settlement-level	Select most recent response

						emergencies, I don't know or don't want to answer		
			R.7	% of settlements main source of information for IDPs	In the last month, what is the main source of information for [info settlement]?	Radio station; bodaboda talktalk; television; newspaper; social media; internet-other; mobile phone call; loudspeakers; in person conversation; other nothing; I don't know or don't want to answer	Settlement-level	responses Equal
			R.8	% of settlements per period when IDPs last received information from pre-displacement location	In the last month, who provided the main source of news for MOST people in [info settlement]?	Friend/family; Aid worker; community leader, religious leader, or chief; community health worker; local authority; transport driver; other; I don't know or don't want to answer	Settlement-level	responses Equal
Meta-Data	Meta-Data	N/A	NA	Data Collection Date	NA	Automatic	N/A	N/A
	Meta-Data	N/A	A.2	Enumerator ID	Enumerator ID number	1-30	N/A	N/A
	Meta-Data	N/A	NA	Start and end time of survey	NA	Automatic	N/A	N/A
	Meta-Data	N/A	A.1	Location of interview – base	Please specify your (enumerator) base	Akobo, Aweil, Bentiu, Bor Pock, Bor Town, Juba, Capote, Maban, Malakal, Mingkaman, Moyo, Nyal, Pariang, Rank, Ton, Wau, Yam bio	N/A	N/A
	Meta-Data	N/A	A.3	How enumerator is assessing settlement	How are you (enumerator) assessing the settlement?	Remote, Remotely, Directly, Phone call		N/A
	Meta-Data	N/A	Q.1	GPS coordinates of data collection site	Please take the GPS coordinates of your location	Geoponic	N/A	N/A

## 5.2 Analysis plan for semi-structured displacement mapping

Research questions	SUBQ#	Sub-question	Questionnaire QUESTION	Probes	Data collection method	Key disaggregation (Group types)
What are the dynamics and patterns of displacement from an identified area of interest?	1	What were the push factors for displacement?	1. Have people recently (within the last month) left [AREA OF INTEREST]? If so, why?	- If violence, when? Threat or realized violence? - If lack of resources, why? What happened? What is the geographic scale? (map)	FGD	- County of interest - KI gender
	2	What are the demographics of the area of interest?	2. What was the original population of [AREA OF INTEREST] before displacement?	- Approx. how many left? - Approx. how many remain? Host community, IDP?	FGD	- County of interest - KI gender
	3	Where routes did people take in leaving the area of interest?	3. Where did people go to? [Please find this on the map]. Identify both current location and any others where large population numbers went.	- Did everyone go to the same place? If not, where else?	FGD	- County of interest - KI gender

				- Where did people go originally? For how long? Where next? - How did they travel? What was the cost?		
4	What were the pull factors for displacement?	4. Why did they come to/stay in this particular location?		- Were there other location that they could have gone to? If so, why did they come here? - Are they free to move?	FGD	- County of interest - KI gender
6	What are the intentions, into the future?	5. Do they intend to stay here in this location? Is so, why? If not, where do they plan to go?		- Is it a temporary more or permanent? - Are they free to move?	FGD	- County of interest - KI gender
7	How will decisions about the future be made? With what information, collected how?	6. Do they personally expect to visit (temporarily or permanently) their homeland again? If so, why? Under what conditions would go back with their families permanently back to their homeland?		- How know if these conditions are in place? - Expect these conditions to happen?	FGD	- County of interest - KI gender
8	Displacement route mapping	<ul style="list-style-type: none"> <li>- introduce participants to the map. Show them where we are now, and the area of interest on the map.</li> <li>- Show them major towns in the region so they understand the map. Through showing them key roads, rivers/swamps, towns etc., work with each participant to identify where they were staying before they were displaced on the map. Circle each participant's town/village on the map, if the settlement name doesn't exist, identify approximately where the village/town is and circle with the name.</li> <li>- Once in sub-question 3, identify displacement routes each person took, including major transit sites and challenges along the way – mark with differently colored highlighters. Ask about the size of groups that people travelled with and about populations remaining in transit locations.</li> </ul>			FGD	- County of interest - KI gender

### 5.3 Analysis plan for semi-structured food security and livelihoods mapping

Research questions	SUBQ#	Sub-question	Questionnaire QUESTION	Probes	Data collection method	Key disaggregation (Group types)
What is the state of food security and livelihoods in a given area of interest?	1	What is the livelihood profile of a given community in a typical year?	1. In a normal year, how does the community feed itself/obtain food or money to buy food? What are the common ways households feed themselves in this area (area however defined)"	- Primary crops? Seasons? - Livestock? Where? How managed? - Fishing and hunting? By who? - Wild foods? When? By who? - Financial resources? Who? Where? Migration? What activities? Who	FGD	- County of interest - KI gender
	2	What shocks or changes has the community experienced, impacting their food security and livelihoods?	2. In the last month, how have these activities changed? Are any of these activities no longer available? (this includes "normal seasonal changes" and also large changes to the context (aka fighting, flooding etc.) Why are these activities no longer available?	- Crops? - Livestock management? - Fishing and hunting? - Wild food gathering? - Income generation activities? - Migration patterns?	FGD	- County of interest - KI gender

	3	What is the current state of access to food in the community?	3. Based on the previous discussion of your ability to access to resources to meet your families food needs, how would you present quality of life (e.g. very good, good, neutral, bad, very bad)?	- Quality of life improved/worsen over last month? - Why? - When?	FGD	- County of interest - KI gender
	4	What is the broader state of access to food in surrounding areas?	4. Please mark on the map (state level) where access to resources is good and where access to resources is limited and explain why for each point.	Mark where: - Quality of life is bad (in red) - Quality of life is good (in green) Explain why different levels in various places.	FGD	- County of interest - KI gender
What is the state of risk, resilience and mitigation strategies in a given area of interest?	5	What are the typical coping strategies employed by communities in a given area of interest?	5. Please think back to a time before this, during a normal year, when your family had insufficient food or a lack of resources to buy food. During this time of little food access, what were the usual activities your family adopted to seek additional resources or change the use of existing resources to meet your families food needs?	- Community able to use coping strategies? - If not, why?	FGD	- County of interest - KI gender
	6	Are these strategies currently available?	6. Have the strategies used by residents in your settlement of knowledge to cope with a lack of resources recently changed?	- If changed, what strategies using now? - Why have strategies recently become unavailable?	FGD	- County of interest - KI gender
	7	What are the typical networks of support, and what is their current state?	7. Do families in your settlement rely on social, family networks, neighbors and friends to share resources and receive support when facing food or resource shortages?	- Please describe how networks of support work - Are networks still functioning? - If not, why? - If not, since when?	FGD	- County of interest - KI gender

#### 5.4 Analysis plan for semi-structured service access gap mapping

Research questions	SUBQ#	Sub-question	Questionnaire QUESTION	Probes	Data collection method	Key disaggregation (Group types)
What is the access to food, livelihoods and related services? Where are the gaps?	1.	What are the main sources of food?	1. What is currently the main source of food? Which other sources of food do you use, including coping strategies?	- Sufficient food? - If no, what are the reasons? - If no, what coping strategies? How frequently used?	FGD	- County of interest - KI gender
	2.	Can communities access a market?	2. To what extent is there a functioning market in the area?	- If yes, are all items available? - If not, why not? - If yes, why/did the prices change?	FGD	- County of interest - KI gender
	3.	What is the state of livelihood activities?	3. Are people currently engaging in livelihood activities?	- If no, why? - If yes, what are main activities? - Access to land? Why, why not? - Cultivate in previous season? - Livestock? Which, where, who responsible, any incidents? - Casual labor? What type?	FGD	- County of interest - KI gender
What is the access to health, WASH, and related services? Where are the gaps?	1.	Are health services accessible?	1. To what extent is there access to health care in the [AREA OF INTEREST]?	- What facilities? - Medical staff? Why, why not? - Drugs? Why, why not?	FGD	- County of interest - KI gender

				- In no access, what reasons? - If no access, how do people cope?		
	2.	What are the main cases of morbidity?	2. What are the main causes of morbidity?	- Sickness - Injury? - Conflict	FGD	- County of interest - KI gender
	3.	What is the access to water?	3. To what extent is there clean/safe drinking water in the [AREA OF INTEREST]?	- If yes, source? - If no, reasons? - If no, alternative sources? What side effects?	FGD	- County of interest - KI gender
	4.	What is the access to sanitation?	4. To what extent do people use latrines regularly?	- Why, why not?	FGD	- County of interest - KI gender
What is the access to education services? Where are the gaps?	1.	Is education accessible?	1. Are education services available in the [AREA OF INTEREST]?		FGD	- County of interest - KI gender
	2.	What are the barriers to education?	2. What are the main barriers to education?	- List main reasons for lack of access? - Do all girls attend? Why not? - Do all boys attend? Why not?	FGD	- County of interest - KI gender
	3.	What are the levels of resources and support?	3. Do the schools have enough teachers?	- Are the teachers supported? - NGOs, government, fees?	FGD	- County of interest - KI gender
What is the access to shelter and related services? Where are the gaps?	1.	What is the state of access to shelter in the community?	1. Is everyone sleeping under a shelter [AREA OF INTEREST]? If not, why?		FGD	- County of interest - KI gender
	2.	What are the main types of shelter available?	2. What are the main types of shelter type for the community?	- For host community? - For IDPs?	FGD	- County of interest - KI gender
	3.	Has there been shelter damage?	3. Have any shelters been burned/destroyed?	- How many? When? - Have shelters been rebuilt?	FGD	- County of interest - KI gender
	4.	What is the access to NFIs?	4. Do people have access to NFIs?	- Which NFIs? - If not, what items are most needed?	FGD	- County of interest - KI gender

## 6. Data Management Plan

Administrative Data			
Research Cycle name	Assessment of hard-to-reach areas		
Project Code	32DAF (32iAED), 32DDM (32iAEK)		
Donor	USAID, SDC		
Project partners			
Research Contacts	Katie Rickard, Katie.rickard@reach-initiative.org		
Data Management Plan Version	Date: 20/02/2018	Version: 2.0	
Related Policies			
Documentation and Metadata			
What documentation and metadata will accompany the data? <i>Select all that apply</i>	<input checked="" type="checkbox"/>	Data analysis plan	<input checked="" type="checkbox"/> Data Cleaning Log, including: x Deletion Log x Value Change Log
	<input type="checkbox"/>	Code book	<input type="checkbox"/> Data Dictionary
	<input type="checkbox"/>	Metadata based on HDX Standards	<input checked="" type="checkbox"/> Data Cleaning SOPs
Ethics and Legal Compliance			
Which ethical and legal measures will be taken?	<input checked="" type="checkbox"/>	Consent of participants to participate	<input checked="" type="checkbox"/> Consent of participants to share personal information with other agencies
	<input checked="" type="checkbox"/>	No collection of personally identifiable data will take place	<input checked="" type="checkbox"/> Gender, child protection and other protection issues are taken into account
	<input checked="" type="checkbox"/>	All participants reached age of majority	Other <i>[please specify]</i>
Who will own the copyright and Intellectual Property Rights for the data that is collected?	REACH/IMPACT Initiatives		
Storage and Backup			
Where will data be stored and backed up during the research?	<input checked="" type="checkbox"/>	IMPACT/REACH Kobo Server	<input type="checkbox"/> Other Kobo Server: <i>[specify]</i>
	<input type="checkbox"/>	IMPACT Global Physical / Cloud Server	<input checked="" type="checkbox"/> Country/Internal Server: REACH SSD Dropbox
	<input checked="" type="checkbox"/>	On devices held by REACH staff	<input type="checkbox"/> Physical location <i>[specify]</i>
	<input type="checkbox"/>	Other <i>[specify]</i>	
Which data access and security measures have been taken?	<input checked="" type="checkbox"/>	Password protection on devices/servers	<input checked="" type="checkbox"/> Data access is limited to REACH contracted staff
	<input checked="" type="checkbox"/>	Form and data encryption on data collection server	
	<input type="checkbox"/>	Other <i>[specify]</i>	
Preservation			
Where will data be stored for long-term preservation?	<input checked="" type="checkbox"/>	IMPACT / REACH Global Cloud / Physical Server	<input type="checkbox"/> OCHA HDX
	<input checked="" type="checkbox"/>	REACH Country Server	<input type="checkbox"/> Other <i>[specify]</i>
Data Sharing			
Will the data be shared publically?	<input checked="" type="checkbox"/>	Yes (county level dataset is shared, settlement level dataset only upon request from	<input type="checkbox"/> No, only with mandating agency / body



		humanitarian agencies)		
Will all data be shared?	<input type="checkbox"/>	Yes	X	No, only anonymized/ cleaned/ consolidated [delete what does not apply] data will be shared
	<input type="checkbox"/>	No, other [specify]		
Where will you share the data?	X	REACH Resource Centre	X	OCHA HDX
	X	Humanitarian Response	<input type="checkbox"/>	Other
<b>Responsibilities</b>				
Data collection	Assessment Officers, Assessment Managers, County Coordinator			
Data cleaning	Field Coordinators, Assessment Officer, overall oversight GIS Team			
Data analysis	GIS Team, Assessment Officers			
Data sharing/uploading	Country Coordinator			

## 7. Monitoring & Evaluation Plan

IMPACT Objective	External M&E Indicator	Internal M&E Indicator	Focal point	Tool	M&E Plan
<b>Humanitarian stakeholders are accessing IMPACT products</b>	Number of humanitarian organisations accessing IMPACT services/products  Number of individuals accessing IMPACT services/products	# of downloads of x product from Resource Centre	Country request to HQ	User log	X Yes <input type="checkbox"/> No
		# of downloads of x product from Relief Web	Country request to HQ		X Yes <input type="checkbox"/> No
		# of downloads of x product from Country level platforms	Country team		<input type="checkbox"/> Yes   X No
		# of page clicks on x product from REACH global newsletter	Country request to HQ		X Yes <input type="checkbox"/> No
		# of page clicks on x product from country newsletter, sendingBlue, bit.ly	Country team		X Yes <input type="checkbox"/> No
		# of visits to x webmap/x dashboard	Country request to HQ		X Yes <input type="checkbox"/> No
<b>IMPACT activities contribute to better program implementation and coordination of the humanitarian response</b>	Number of humanitarian organisations utilizing IMPACT services/products	# references in HPC documents (HNO, SRP, Flash appeals, Cluster/sector strategies)	Country team	Reference log	Humanitarian Needs Overview Humanitarian Response Plan Food Security and Livelihoods Cluster Response Strategy WASH Cluster Response Strategy UNHCR Country Strategy
		# references in single agency documents			
<b>Humanitarian stakeholders are using IMPACT products</b>	Humanitarian actors use IMPACT evidence/products as a basis for decision making, aid planning and delivery	Perceived relevance of IMPACT country-programs	Country team	Usage Feedback and Usage Survey template	Survey monkey: As part of regular dissemination email, survey monkey sent every six months to assess usage of REACH products.

	Number of humanitarian documents (HNO, HRP, cluster/agency strategic plans, etc.) directly informed by IMPACT products				Qualitative feedback: Each REACH staff responsible for reporting back to communications manager each time agency requests REACH information or provides feedback on how REACH information has been used
		Perceived usefulness and influence of IMPACT outputs			
		Recommendations to strengthen IMPACT programs			
		Perceived capacity of IMPACT staff			
		Perceived quality of outputs/programs			
		Recommendations to strengthen IMPACT programs			
<b>Humanitarian stakeholders are engaged in IMPACT programs throughout the research cycle</b>	Number and/or percentage of humanitarian organizations directly contributing to IMPACT programs ( <i>providing resources, participating to presentations, etc.</i> )	# of organisations providing resources (i.e.staff, vehicles, meeting space, budget, etc.) for activity implementation	Country team	Engagement log	X Yes <input type="checkbox"/> No
		# of organisations/clusters inputting in research design and joint analysis			X Yes <input type="checkbox"/> No
		# of organisations/clusters attending briefings on findings;			X Yes <input type="checkbox"/> No

## ANNEX 1: ACRONYMS

### REACH Internal team:

CC – Country Coordinator

SMT – Senior Management Team

SAO – Senior Assessment Officer

SGO – Senior GIS Officer

AO – Assessment officer

GO – GIS Officer

### Clusters:

ICWG – Inter Cluster Working Group

FSL – Food Security and Livelihoods Cluster

WASH – Water, Sanitation and Hygiene Cluster

Shelter/NFI – Shelter and Non Food Items Cluster

### Partners:

IOM DTM – International Organization for Migration, Displacement and Tracking Matrix

WFP – World Food Programme

FAO – Food and Agriculture Organization

UNHCR – United Nations High Commission for Refugees

### Data:

ACLED – Armed Conflict Location and Event Data (project)

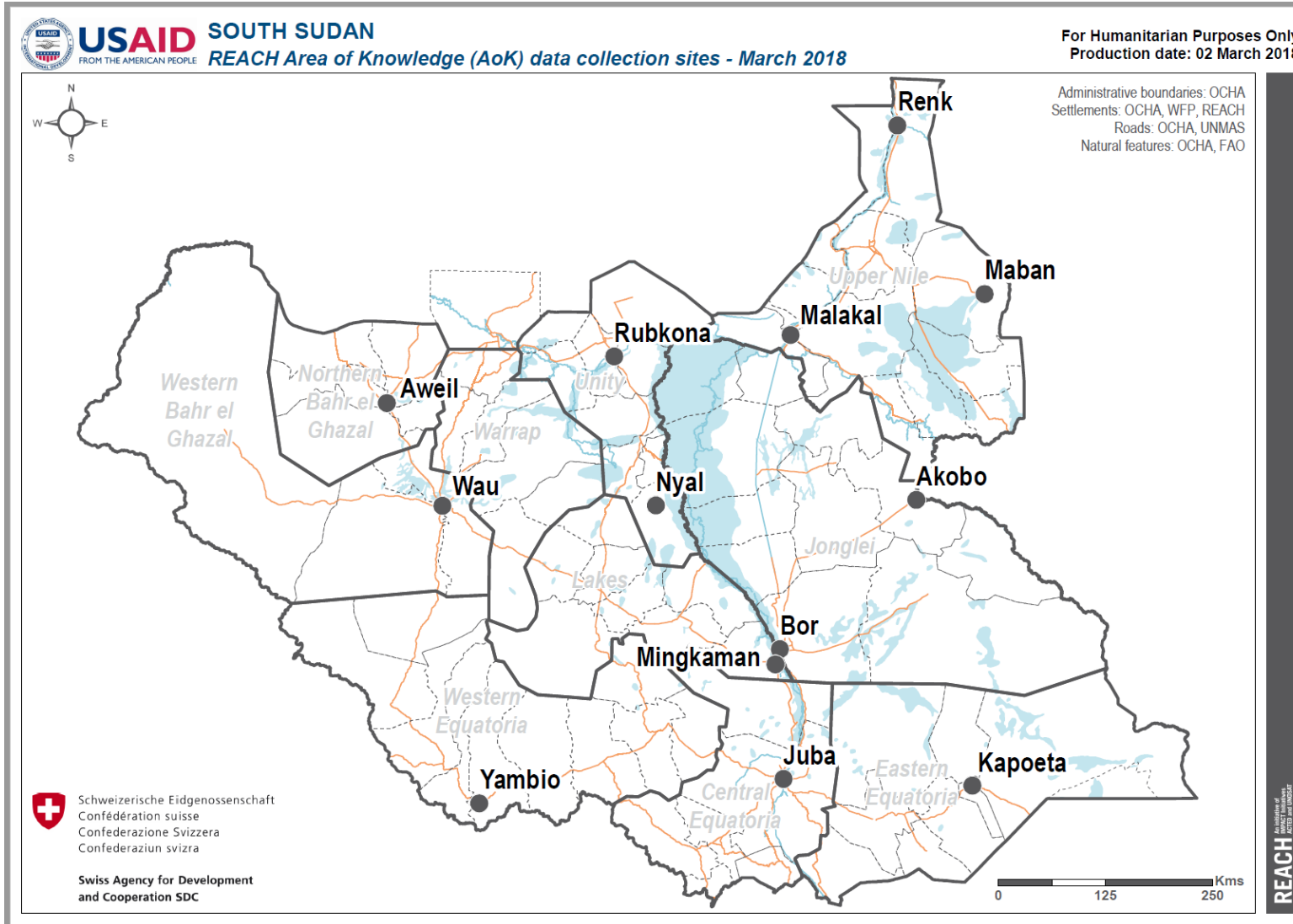
FSNMS – Food Security and Nutrition Monitoring Survey

CLIMIS – Crop and Livestock Market Information System

NIWG – Nutrition Information Working Group

# ANNEX 2: AOK DATA COLLECTION SITES

Map 1: Aok data collection sites, March 2018



## ANNEX 3: MULTI-SECTOR QUANTITATIVE SURVEY TOOL

### Documentation Key

Option	Description
constraint	limitation on what value can be entered for the question.
excel value	<b>monospace</b> code block indicates a value that appears in the data output.
group	assigned an upper-case letter and underlined.
group relevant	skip logic applied to the entire group.
name	the value of the data output excel column.
note	indicated by light grey text with a left-hand vertical bar.
relevant	skip logic that shows/hides question based on previous selection.
sub-group	assigned a lower-case letter from its parent group, plus a sequential number.
sub-group relevant	skip logic inherited from the sub-group.
type	input method, one of: select one, select multiple, text, integer.

### Table of Contents

## Area of Knowledge (AoK) Questionnaire - V19 (July 2018)

### Table of Contents

- Enumerator Info
- Key Informant Info
- Area of knowledge
- F. Population
- f1. Local community
- f2. IDPs
- f3. Returnees
- G. Food Security
- L. Livelihoods
- Health Services
- H. Death
- N. Protection
- S. Shocks
- J. Shelter
- K. Water and Sanitation
- M. Education
- R. Camp Coordination and Camp Management
- O. Land mines and unexploded ordnance
- Q. Final Note

Hi my name is \_\_\_. I work for REACH, an initiative of ACTED INGO. We are currently conducting a survey to understand remote locations that have little humanitarian access. We would like to know more about areas you have recently travelled to or receive information on, and what services are or are not available there. We also may ask you a few questions about yourself personally. The survey usually takes between 20 and 45 minutes to complete. Any information that you provide will be kept strictly confidential. This is voluntary and you can choose not to answer any or all of the questions if you want; you may also choose to quit at any point. However, we hope that you will participate since your views are important. Responses are not directly tied to any form of humanitarian assistance and answers given in this interview will not directly affect any status as a beneficiary or non-beneficiary. Do you have any questions? May I begin now?

## A Enumerator Info

### 1. PLEASE SPECIFY YOUR (ENUMERATOR) BASE:

- name: base
- select one:
  - akobo : Akobo
  - aweil : Aweil
  - bentiu : Bentiu
  - bor\_poc : Bor PoC
  - bor\_town : Bor Town
  - juba : Juba
  - kapoeta : Kapoeta
  - maban : Maban
  - malakal : Malakal
  - mingkaman : Mingkaman
  - moyo : Moyo
  - nyal : Nyal
  - pariang : Pariang
  - renk : Renk
  - tonj : Tonj
  - wau : Wau
  - yambio : Yambio

### 2. PLEASE SPECIFY YOUR (ENUMERATOR) ID NUMBER:

- name: enumerator\_id
- select one:
- 1 - 30

### 3. HOW ARE YOU (ENUMERATOR) ASSESSING THE SETTLEMENT?

- name: type\_visit
- select one:
  - remote : (For all normal cases) - I'm assessing the settlement remotely through key informant
  - direct : (Field visits) - I'm in the settlement assessing it
  - phone : Phone calls

## B Key Informant Info

### 1. WHAT IS YOUR (KEY INFORMANT) GENDER?

- name: ki\_gender
- select one:
  - male : Male
  - female : Female

### 2. WHAT IS YOUR (KEY INFORMANT) AGE?

- name: ki\_age
- constraint:  $15 < ki\_age < 126$
- integer

### 3. WHAT IS YOUR (KEY INFORMANT) CURRENT DISPLACEMENT STATUS?

- name: disp\_status
- select one:
  - idp : IDP (person coming from a different settlement)
  - refugee : Refugee (person coming outside South Sudan)
  - returnee : Returnee (person displaced elsewhere in South Sudan or outside of the country and now is returned)
  - host\_community : Local community / non-displaced person

#### D Area of Knowledge

You mentioned that you have information about an area in South Sudan. You will now be asked about this location.

### 1. WHAT STATE IS THE LOCATION IN?

- name: info\_state
- select one:
  - List of states

### 2. WHAT COUNTY IS THE LOCATION IN?

- name: info\_county
- select one:
  - List of counties

### 3. WHAT SETTLEMENT IS THE LOCATION IN?

- name: info\_settlement
- select one:
  - List of settlements

### 4. PLEASE SPECIFY OTHER SETTLEMENT:

- name: info\_settlement\_other
- relevant: info\_settlement = other
- text

### 5. IN THE LAST MONTH, HOW DID YOU GET KNOWLEDGE ABOUT \${SETTLEMENT} ?

- name: type\_contact
- relevant: type\_visit = remote
- select one:
  - remote\_contact : I had contact with someone living in the settlement
  - direct\_contact : I visited the settlement

### 6. IN THE LAST MONTH, WHAT DID YOU USE TO MAKE CONTACT WITH SOMEONE LIVING IN \${SETTLEMENT} ?

- name: remotely\_how
- sub-group: d1. (Remote contact)
- sub-group relevant: type\_contact = remote\_contact
- select multiple:
  - m\_phone : Mobile phone
  - s\_phone : Satellite phone (Thuraya)



- internet : Computer internet
- mob\_app : Mobile phone app (Whatsapp, etc.)
- radio : HF or VHF Radio
- other : Other
- dontknow : I don't know or don't want to answer

**7. TO CONFIRM, YOU HAVE EITHER VISITED  $\${SETTLEMENT}$  IN THE LAST MONTH, OR TALKED REMOTELY WITH SOMEONE LIVING IN  $\${SETTLEMENT}$  IN THE LAST MONTH? (DO NOT CONTINUE SURVEY IF LAST CONTACT IS MORE THAN A MONTH AGO)**

- name: ki\_recent
- select one:
  - yes : Yes
  - no : No

## F Population

### f1 Local community

You will now be asked information about the local community living in  $\${settlement}$  .

**1. IN THE LAST MONTH, WERE ANY MEMBERS OF THE LOCAL COMMUNITY STILL LIVING IN  $\${SETTLEMENT}$  ?**

- name: hc\_now
- select one:
  - yes : Yes
  - no : No
  - dontknow : I don't know or don't want to answer

**2. IN THE LAST MONTH, WHAT PROPORTION OF THE ORIGINAL POPULATION REMAINS IN  $\${SETTLEMENT}$  ?**

- name: hc\_remain\_perc
- sub-group: f1. (local community in  $\${settlement}$ )
- sub-group relevant: hc\_now = yes
- select one:
  - less\_half : Less than half (few or some)
  - half : Around half
  - more\_half : More than half (most or all)
  - dontknow : I don't know or don't want to answer

### f2 IDPs

You will now be asked information about any IDPs living in  $\${settlement}$  . An IDP is a person coming from a different settlement.

**1. IN THE LAST MONTH, WERE ANY IDPs LIVING IN  $\${SETTLEMENT}$  ?**

- name: idp\_now
- select one:
  - yes : Yes
  - no : No
  - dontknow : I don't know or don't want to answer

## 2. IN THE LAST MONTH, WHAT PROPORTION OF THE POPULATION WERE IDPs IN $\${SETTLEMENT}$ ?

- name: idp\_perc
- sub-group: f2. (IDPs Living in  $\${settlement}$  )
- sub-group relevant: idp\_now = yes
- select one:
  - less\_half : Less than half (few or some)
  - half : Around half
  - more\_half : More than half (most or all)
  - dontknow : I don't know or don't want to answer

## 3. WHEN DID THE MOST RECENT IDPs ARRIVE IN $\${SETTLEMENT}$ ?

- name: idp\_time\_arrive
- sub-group: f2. (IDPs Living in  $\${settlement}$  )
- sub-group relevant: idp\_now = yes
- select one:
  - 3\_months : In the last 3 months
  - 3\_6\_months : In the last 6 months
  - 6\_12\_months : In the last 1 year
  - 1\_year : More than 1 year
  - dontknow : I don't know or don't want to answer

## 4. DO YOU KNOW WHERE THE MOST RECENT IDPs CAME FROM IN $\${SETTLEMENT}$ ?

- name: idp\_source
- sub-group: f2. (IDPs Living in  $\${settlement}$  )
- sub-group relevant: idp\_now = yes
- select one:
  - yes : Yes
  - no : No

## 5. WHAT STATE WERE THE MOST RECENT IDPs FROM?

- name: idp\_source\_state
- sub-group: f2. (IDPs Living in  $\${settlement}$  )
- sub-group relevant: idp\_now = yes
- relevant: idp\_source = yes
- select one:
  - List of states

## 6. WHAT COUNTY WERE THE MOST RECENT IDPs FROM?

- name: idp\_source\_county
- sub-group: f2. (IDPs Living in  $\${settlement}$  )
- sub-group relevant: idp\_now = yes
- relevant: idp\_source = yes
- select one:
  - List of counties

### f3 Returnees

You will now be asked information about any local community from  $\${settlement}$  , that was displaced elsewhere in South Sudan or outside of the country and now is returned to  $\${settlement}$  .

## 1. HAVE ANY LOCAL COMMUNITY RETURNED TO $\${settlement}$ AFTER BEING DISPLACED IN ANOTHER AREA?

- name: hcdisp\_now
- select one:
  - yes : Yes
  - no : No
  - dontknow : I don't know or don't want to answer

## 2. WHEN DID THE MOST RECENT RETURNEES ARRIVE IN $\${settlement}$ ?

- name: returnee\_time\_arrived
- sub-group: f3. (local community that have Returned to  $\${settlement}$  )
- sub-group relevant: hcdisp\_now = yes
- select one:
  - 3\_months : In the last 3 months
  - 3\_6\_months : In the last 6 months
  - 6\_12\_months : In the last 1 year
  - 1\_year : More than 1 year
  - dontknow : I don't know or don't want to answer

### G Food Security

You will now be asked about food security conditions in  $\${settlement}$  now. Please be as detailed as possible.

## 1. IN THE LAST MONTH, WERE MOST PEOPLE ABLE TO ACCESS ENOUGH FOOD IN $\${settlement}$ ?

- name: food\_now
- select one:
  - yes : Yes
  - no : No
  - dontknow : I don't know or don't want to answer

## 2. IN THE LAST MONTH, WHAT WAS THE MAIN REASON PEOPLE COULDN'T ACCESS ENOUGH

- food in  $\${settlement}$  ?
- name: food\_no\_reason1
- relevant: food\_now = no
- select one:
  - unsafe : Unsafe to access land
  - lack\_land : There is not enough cultivation land
  - crops\_destroyed\_flood : Crops have been destroyed by flooding
  - crops\_destroyed\_pests : Crops have been destroyed by pests
  - lack\_rain : Lack of rain has reduced previous harvest
  - crops\_destroyed\_fight : Crops have been destroyed by conflict
  - grow\_short : Growing season was too short
  - crops\_stolen : Crops have been stolen
  - no\_livestock : No livestock

- food\_dist\_stop : Food distribution no longer occurs
- no\_market : No functioning market
- high\_prices : Prices too high to buy food
- no\_nets : Lack of fishing nets
- other : Other
- dontknow : I don't know or don't want to answer

### 3. IN THE LAST MONTH, WHAT TYPES OF FOOD WERE REGULARLY EATEN BY MOST PEOPLE IN \${SETTLEMENT} ?

- name: food\_now\_type
- select multiple:
  - Main\_staples : Cereals & roots (sorghum, maize, millet, rice, bread, porridge, cassava)
  - Pulses : Beans, groundnuts, paste, other nuts
  - Fruit : Fruit, cultivated and wild (e.g. mangos, bananas, coconuts, palm fruit)
  - Vegetables : Greens and vegetables
  - Meat : Meat and eggs
  - Milk\_Dairy : Milk and dairy (e.g. milk, cheese)
  - dontknow : I don't know or don't want to answer

### 4. IN THE LAST MONTH, WHERE DID MOST PEOPLE GET THEIR FOOD FROM IN \${SETTLEMENT} ?

- name: food\_source
- select one:
  - cultivated : Own production (cultivated)
  - livestock : Own production (livestock)
  - forage : Foraged for wild foods
  - hunting : Hunting
  - fishing : Fishing
  - bought : Bought with cash
  - barter : Exchange goods for goods (bartering)
  - family\_friends : Given by family, friends, or other local people
  - ngo : Humanitarian assistance (including FFA / CFA)
  - govt : Government food distribution
  - dontknow : I don't know or don't want to answer
  - other : Other

### 5. IN THE LAST MONTH, DID MOST PEOPLE EAT WILD FOODS AS PART OF A MAIN MEAL IN \${SETTLEMENT} ?

- name: food\_wild\_now
- select one:
  - yes : Yes
  - no : No
  - dontknow : I don't know or don't want to answer

### 6. IN THE LAST MONTH, WHAT PROPORTION OF MAIN MEALS INCLUDED WILD FOODS FOR MOST PEOPLE IN \${SETTLEMENT} ?

- name: food\_wild\_proportion

- relevant: food\_wild\_now = yes
- select one:
  - less\_half : Less than half (few or some)
  - half : Around half
  - more\_half : More than half (most or all)
  - dontknow : I don't know or don't want to answer

**7. IN THE LAST MONTH, DID ANY PEOPLE CONSUME WILD FOODS THAT MADE THEM SICK IN \${SETTLEMENT} ?**

- name: food\_wild\_emergency
- select one:
  - yes : Yes
  - no : No
  - dontknow : I don't know or don't want to answer

**8. IN THE LAST MONTH, HOW MANY MEALS DID MOST PEOPLE CONSUME PER DAY IN \${SETTLEMENT} ?**

- name: meals\_number
- select one:
  - Less\_than\_1 : Less than 1
  - one : 1
  - two : 2
  - three : 3
  - three\_plus : 3+
  - dontknow : I don't know or don't want to answer

**10. IN THE LAST THREE MONTHS, HAVE ANY PEOPLE RECEIVED FOOD ASSISTANCE (GENERAL FOOD DISTRIBUTION / FOOD FOR WORK / CASH FOR WORK) FROM \${SETTLEMENT} ?**

- name: food\_distr
- select one:
  - yes : Yes
  - no : No
  - dontknow : I don't know or don't want to answer

**12. IN THE LAST MONTH, WAS THERE ANY FUNCTIONAL MARKET YOU COULD WALK TO AVAILABLE FROM \${SETTLEMENT} ?**

- name: market\_now
- select one:
  - yes : Yes
  - no : No
  - dontknow : I don't know or don't want to answer

**13. IN THE LAST MONTH, WAS THERE AN INCREASE IN THE PRICE OF CEREALS (SORGHUM, MAIZE, MILLET, ETC) AVAILABLE FROM \${SETTLEMENT} ?**

- name: cerial\_price\_increase

- relevant: market\_now = yes
- select one:
  - yes : Yes
  - no : No
  - dontknow : I don't know or don't want to answer

**9. IN THE LAST MONTH, WHEN THERE WAS NOT ENOUGH FOOD IN \${SETTLEMENT} , WHAT DID ANY PEOPLE DO TO MAKE IT LAST LONGER? (READ OPTIONS OUT LOUD)**

- name: food\_coping\_consumption
- select multiple:
  - less\_expensive\_food : Rely on less preferred and less expensive food (i.e. cheaper, lower quality food)
  - limit\_meal\_size : Limit portion sizes at meal times
  - only\_children\_eat : Adults do not eat so children can eat
  - reduce\_meals : Reduce number of meals eaten in a day
  - skip\_days : Skip entire days without eating
  - none : None
  - other : Other
  - dontknow : I don't know or don't want to answer

**L Livelihoods**

**1. IN THE LAST MONTH, WHEN THERE WAS NOT ENOUGH FOOD IN \${SETTLEMENT} , WHAT DID ANY PEOPLE DO TO FIND NEW SOURCES OF FOOD? (READ OPTIONS OUT LOUD)**

- name: food\_coping\_livelihoods
- select multiple:
  - borrow\_food : Borrow food or get help from a friend or relative
  - borrow\_money : Purchase food with borrowed money
  - gather\_wild\_food : Gather wild food
  - gather\_firewood : Collecting firewood in dangerous places
  - consume\_seeds : Consume seed stock meant for next season or harvest crops that are not yet ready
  - send\_children\_to\_neighbors : Send children to eat with neighbors
  - household\_begs : Asking non-relatives for food
  - sell\_home\_assets : Sell home assets
  - sell\_livestock : Selling more livestock than usual for this time of year
  - slaughter\_livestock : Slaughtering more cattle than normal for this time of year
  - hunting : More hunting than normal for this time of year
  - fishing : More fishing than normal for this time of year
  - cattle\_camps : Families moving to cattle / fishing camps more often than normal
  - displacement\_camp : Sending families out to displacement camps to receive food aid
  - none : None
  - other : Other
  - dontknow : I don't know or don't want to answer

**2. IN THE LAST MONTH, DID MOST PEOPLE ENGAGE IN THE FOLLOWING ACTIVITIES IN \${SETTLEMENT} ? (READ OPTIONS OUT LOUD)**

- name: current\_activities
- select multiple:
  - Crops\_for\_cash : Crops for cash

- Crops\_for\_sustenance : Crops for sustenance
- Livestock : Livestock
- hunting : Hunting
- fishing : Fishing
- Casual\_labour : Casual labour
- Salaries : Earning salaries
- Remittances : Remittances (receiving money from relatives or friends outside of the settlement)
- poultry : Poultry (chicken)
- Other : Other
- none : None
- dontknow : I don't know or don't want to answer

**3. IN THE LAST MONTH, DID MOST PEOPLE HAVE ACCESS TO ANY LAND FOR CULTIVATION IN \${SETTLEMENT} ?**

- name: land\_available
- select one:
  - yes : Yes
  - no : No
  - dontknow : I don't know or don't want to answer

**4. IN THE LAST MONTH, DID MOST PEOPLE HAVE ACCESS TO ENOUGH SEEDS / TOOLS / ETC IN \${SETTLEMENT} ?**

- name: ag\_inputs
- select one:
  - yes : Yes
  - no : No
  - dontknow : I don't know or don't want to answer

**5. IN THE LAST MONTH, DID MOST PEOPLE OWN ANY CATTLE IN \${SETTLEMENT} ?**

- name: cattle\_possession
- select one:
  - yes : Yes
  - no : No
  - dontknow : I don't know or don't want to answer

**6. IN THE LAST MONTH, WERE MOST PEOPLE ABLE TO ACCESS ANY CATTLE FROM \${SETTLEMENT} ?**

- name: cattle\_access
- select one:
  - yes : Yes
  - no : No
  - dontknow : I don't know or don't want to answer

**7. IN THE LAST MONTH, HAS THERE BEEN A DISEASE OUTBREAK AMONG ANY LIVESTOCK OWNED BY PEOPLE IN \${SETTLEMENT} ?**

- name: livestock\_disease
- select one:

- yes : Yes
- no : No
- dontknow : I don't know or don't want to answer

#### I Health Services

You will now be asked about health conditions in \${settlement} now. Please be as detailed as possible.

### 1. IN THE LAST MONTH, WERE THERE ANY HEALTH CARE SERVICES PEOPLE COULD WALK TO AVAILABLE FROM \${SETTLEMENT} ?

- name: health\_now
- select one:
  - yes : Yes
  - no : No
  - dontknow : I don't know or don't want to answer

### 2. IN THE LAST MONTH, HOW LONG DID IT TAKE FOR MOST PEOPLE TO ACCESS HEALTH CARE SERVICES BY FOOT FROM \${SETTLEMENT} ?

- name: health\_dist
- relevant: health\_now = yes
- select one:
  - under\_30\_minutes : Under 30 minutes
  - 30\_minutes\_1\_hour : 30 minutes to less than 1 hour
  - 1\_hour\_half\_day : One hour to less than half a day
  - half\_day : Half a day
  - full\_day : More than half a day
  - dontknow : I don't know or don't want to answer

### 3. IN THE LAST MONTH, WHAT WAS THE MAIN REASON HEALTH CARE SERVICES WERE NOT AVAILABLE FROM \${SETTLEMENT} ?

- name: health\_no\_reason1
- relevant: health\_now = no
- select one:
  - never\_there : There were never health facilities nearby
  - no\_staff : There are no health care workers in the area
  - no\_drugs : There is no medicine available
  - security : The area is too insecure
  - destroyed\_viol : Facilities were destroyed by fighting
  - destroyed\_nd : Facilities were destroyed by natural disaster (flood, fire, or other)
  - too\_distant : The facilities are too distant
  - other : Other
  - dontknow : I don't know or don't want to answer

### 4. IN THE LAST MONTH, WERE ANY FEEDING PROGRAMMES THAT PROVIDED PLUMPY SUP, CSB++ OR OTHER NUTRITION ITEMS AVAILABLE FROM \${SETTLEMENT} ?

- name: supp\_feeding
- select one:
  - yes : Yes
  - no : No



- dontknow : I don't know or don't want to answer

## 5. IN THE LAST MONTH, WHAT WAS THE MAIN HEALTH PROBLEM FOR PEOPLE IN \${SETTLEMENT} ?

- name: health\_problems1
- select one:
  - AIDS\_HIV : AIDS/HIV
  - anal\_haemorrhage : Anal haemorrhage (Bowsir)
  - bilharzia : Bilharzia
  - breath\_problem : Breathing problems
  - brucellosis : Brucellosis
  - chicken\_pox : Chicken pox
  - cholera : Cholera
  - diarrhea : Diarrhea
  - fever : Fever
  - hepatitis : Hepatitis
  - kalazar : Kalazar
  - malaria : Malaria
  - malnutrition : Malnutrition
  - measles : Measles
  - nodding : Nodding disease
  - pneumonia : Pneumonia
  - skin\_disease : Skin disease
  - stomachpain : Stomach pain
  - syphilis : Syphilis
  - tb : Tuberculosis
  - typhoid : Typhoid
  - uti : Urinary tract infection (UTI)
  - wounds : Wounds from fighting
  - none : No common health problems
  - other : Other
  - dontknow : I don't know or don't want to answer

H Death

## 1. IN THE LAST MONTH, WHAT WAS THE MAIN CAUSE OF DEATH FOR PEOPLE IN \${SETTLEMENT} ?

- name: death\_cause1
- select one:
  - malaria\_fever : Malaria / Fever
  - cholera\_diarrhea : Cholera / Diarrhea
  - typhoid : Typhoid
  - hunger\_malnutrition : Hunger / Malnutrition
  - kalazar : Kalazar
  - conflict : Conflict
  - hiv\_aids : HIV / AIDS
  - natural : Natural causes of death (e.g. old age)
  - other : Other
  - dontknow : I don't know or don't want to answer

**2. IN THE LAST MONTH, HAVE MORE PEOPLE DIED THAN IN THE MONTHS BEFORE FOR ANY REASON IN \${SETTLEMENT} ?**

- name: mortality\_increase
- select one:
  - yes : Yes
  - no : No
  - dontknow : I don't know or don't want to answer

**N Protection**

You will now be asked about physical protection for individuals and the community in \${settlement} now. Please be as detailed as possible.

**1. IN THE LAST MONTH, DID MOST PEOPLE FEEL SAFE MOST OF THE TIME IN \${SETTLEMENT} ?**

- name: prot\_now
- select one:
  - yes : Yes
  - no : No
  - dontknow : I don't know or don't want to answer

**2. IN THE LAST MONTH, HAS THERE BEEN ANY INCIDENT OF CONFLICT WHICH HAS KILLED A CIVILIAN IN \${SETTLEMENT} ?**

- name: prot\_incidence
- select one:
  - yes : Yes
  - no : No
  - dontknow : I don't know or don't want to answer

**3. IN THE LAST MONTH, HAS THERE BEEN ANY INCIDENT OF PROPERTY LOOTING (WHERE MOST PROPERTY WAS STOLEN FROM ONE OR MORE HOUSEHOLDS) IN \${SETTLEMENT} ?**

- name: prot\_looting
- select one:
  - yes : Yes
  - no : No
  - dontknow : I don't know or don't want to answer

**5. IN THE LAST MONTH, WHAT WAS THE MAIN SAFETY CONCERN FOR (WOMEN / MEN) 18 YEARS OR OLDER IN \${SETTLEMENT} ?**

- name: prot\_women\_concern , prot\_men\_concern
- select one:
  - kill\_inj\_same : Killing/injury same tribe
  - kill\_inj\_oth : Killing/injury other tribe
  - sex\_viol : Sexual violence
  - abduct : Abduction
  - forced\_recruit : Forced recruitment
  - looting : Looting/criminality
  - cattle\_raid : Cattle raids

- family\_sep : Family separation
- dom\_viol : Domestic violence
- harass : Harassment to disclose information
- neighbors : Violence between neighbours
- none : No issue
- dontknow : I don't know or don't want to answer
- other : Other

## 6. IN THE LAST MONTH, WHAT WAS THE MAIN SAFETY CONCERN FOR (GIRLS / BOYS)

### YOUNGER THAN 18 YEARS IN \${SETTLEMENT} ?

- name: prot\_girls\_concern , prot\_boys\_concern
- select one:
  - kill\_inj\_same : Killing/injury same tribe
  - kill\_inj\_oth : Killing/injury other tribe
  - sex\_viol : Sexual violence
  - abduct : Abduction
  - forced\_recruit : Forced recruitment
  - looting : Looting/criminality
  - cattle\_raid : Cattle raids
  - family\_sep : Family separation
  - early\_marr : Early/forced marriage
  - dom\_viol : Domestic violence
  - harass : Harassment to disclose information
  - neighbors : Violence between neighbours
  - none : No issue
  - dontknow : I don't know or don't want to answer
  - other : Other

## 7. IN THE LAST MONTH, WERE THERE ANY CHILDREN WITH NO CARETAKER OR RELATIVE LOOKING AFTER THEM LIVING IN \${SETTLEMENT} ?

- name: prot\_unaccompanied
- select one:
  - yes : Yes
  - no : No
  - dontknow : I don't know or don't want to answer

## 8. IN THE LAST MONTH, HOW WERE RELATIONS BETWEEN MOST IDPs AND THE LOCAL COMMUNITY IN \${SETTLEMENT} ?

- name: comm\_relations
- relevant: idp\_now = yes
- select one:
  - good : Good
  - neutral : Neutral
  - poor : Poor
  - dontknow : I don't know or don't want to answer

## 9. IN THE LAST MONTH, WERE THERE ANY DISPUTES ABOUT LAND OWNERSHIP FOR PEOPLE IN \${SETTLEMENT} ?

- name: land\_disputes
- select one:
  - yes : Yes
  - no : No
  - dontknow : I don't know or don't want to answer

### S Shocks

You will now be asked about hunger and shocks in \${settlement} . If hunger is very severe, be sure that this reflects the entire settlement, and is not normal for this time of year. For the following shocks, we are looking to compare which factor had the biggest effect on food access.

## 1. IN THE LAST MONTH, HOW BAD WAS HUNGER FOR MOST PEOPLE BECAUSE THEY WERE NOT ABLE TO ACCESS ENOUGH FOOD IN \${SETTLEMENT} ?

- name: shock\_hunger
- relevant: food\_now = no
  - select one:
    - no\_hunger : Almost no hunger
    - hunger\_small : Hunger is small, strategies are available to cope with the reduced access to food
    - hunger\_severe : Hunger is bad, limited options to cope with the reduced access to food
    - hunger\_worst : Hunger is the worst it can be, all over the settlement, and causing many deaths
    - dontknow : I don't know or don't want to answer

## 2. IN THE LAST MONTH, HAS THE ARRIVAL OF IDPs OR RETURNEES HAD ANY IMPACT ON THE ABILITY TO ACCESS ENOUGH FOOD FOR MOST PEOPLE IN \${SETTLEMENT} ?

- name: shock\_arrival
- relevant: hcdisp\_now = yes or idp\_now = yes
- select one:
  - no\_impact : No impact
  - small\_impact : Small impact
  - large\_impact : Large impact
  - dontknow : I don't know or don't want to answer

## 3. IN THE LAST MONTH, HAS THE INCREASE IN CEREAL PRICE HAD ANY IMPACT ON THE ABILITY TO ACCESS ENOUGH FOOD FOR MOST PEOPLE IN \${SETTLEMENT} ?

- name: shock\_cerial\_price
- relevant: cerial\_price\_increase = yes
- select one:
  - no\_impact : No impact
  - small\_impact : Small impact
  - large\_impact : Large impact
  - dontknow : I don't know or don't want to answer

## 4. IN THE LAST MONTH, HAVE LIVESTOCK DISEASE OUTBREAKS HAD ANY IMPACT ON THE ABILITY TO ACCESS ENOUGH FOOD FOR MOST PEOPLE IN \${SETTLEMENT} ?

- name: shock\_livestock

- relevant: livestock\_disease = yes
- select one:
  - no\_impact : No impact
  - small\_impact : Small impact
  - large\_impact : Large impact
  - dontknow : I don't know or don't want to answer

**5. IN THE LAST MONTH, HAS  $\${HEALTH\_PROBLEMS1}$  HAD ANY IMPACT ON THE ABILITY TO ACCESS ENOUGH FOOD FOR MOST PEOPLE IN  $\${SETTLEMENT}$  ?**

- name: shock\_health
- constraint: IF health\_problems1 = malnutrition THEN shock\_health  $\neq$  no\_impact
- select one:
  - no\_impact : No impact
  - small\_impact : Small impact
  - large\_impact : Large impact
  - dontknow : I don't know or don't want to answer

**6. IN THE LAST MONTH, HAS CONFLICT OR LOOTING HAD ANY IMPACT ON THE ABILITY TO ACCESS ENOUGH FOOD FOR MOST PEOPLE IN  $\${SETTLEMENT}$  ?**

- name: shock\_protection
- relevant: prot\_incidence = yes OR prot\_looting = yes
- select one:
  - no\_impact : No impact
  - small\_impact : Small impact
  - large\_impact : Large impact
  - dontknow : I don't know or don't want to answer

**J Shelter**

You will now be asked about shelter conditions in  $\${settlement}$  now. Questions will be asked about shelter for local community and IDPs. Please be as detailed as possible.

**1. IN THE LAST MONTH, WHAT WAS THE MAIN SHELTER TYPE USED BY THE LOCAL COMMUNITY IN  $\${SETTLEMENT}$  ?**

- name: hc\_shelter\_type1
- sub-group: j1. (Recent local community Shelter Conditions)
- sub-group relevant: hc\_now = yes
- select one:
  - permanent : Permanent structure (e.g. brick, metal roof)
  - tukul : Tukul
  - rakooba : Rakooba
  - tent : Tent
  - improvised : Improvised shelter (plastic sheet and other materials)
  - abandoned : Abandoned building
  - community\_bldg : Community building (church, school, hospital, abandoned structure)
  - none : No shelter (sleeping in the open)
  - other : other
  - dontknow : I don't know or don't want to answer

## 2. IN THE LAST MONTH, WHERE WERE MOST OF THE LOCAL COMMUNITY LIVING IN \${SETTLEMENT} ?

- name: hc\_location
- sub-group: j1. (Recent local community Shelter Conditions)
- sub-group relevant: hc\_now = yes
- select one:
  - own\_home : Their own homes
  - other\_home : Another home in the same village
  - community\_bldg : Community buildings (church, school, hospital, abandoned structure)
  - bush : Away from their homes in the bush / swamp / forest / hills
  - other : Other
  - dontknow : I don't know or don't want to answer

## 3. IN THE LAST MONTH, WHAT WAS THE MAIN SHELTER TYPE USED BY IDPs IN \${SETTLEMENT} ?

- name: idp\_shelter\_type1
- sub-group: j2. (Recent IDPs Shelter Conditions)
- sub-group relevant: idp\_now = yes
- select one:
  - permanent : Permanent structure (e.g. brick, metal roof)
  - tukul : Tukul
  - rakooba : Rakooba
  - tent : Tent
  - improvised : Improvised shelter (plastic sheet and other materials)
  - abandoned : Abandoned building
  - community\_bldg : Community building (church, school, hospital, abandoned structure)
  - none : No shelter (sleeping in the open)
  - other : other
  - dontknow : I don't know or don't want to answer

## 4. IN THE LAST MONTH, WHERE WERE MOST IDPs LIVING?

- name: idp\_location
- sub-group: j2. (Recent IDPs Shelter Conditions)
- sub-group relevant: idp\_now = yes
- select one:
  - host\_com : With the host community
  - community\_bldg : Community buildings (church, school, hospital, abandoned structure)
  - bush : In the bush
  - other : Other
  - dontknow : I don't know or don't want to answer

## 5. IN THE LAST MONTH, WERE ANY IDPs LIVING IN THE OPEN WITHOUT SHELTER IN \${SETTLEMENT} ?

- name: shelter\_open\_yn
- relevant: idp\_now = yes
- select one:

- yes : Yes
- no : No
- dontknow : I don't know or don't want to answer

**6. IN THE LAST MONTH, WHAT PROPORTION OF IDPs WERE LIVING IN THE OPEN WITHOUT SHELTER IN \${SETTLEMENT} ?**

- name: shelter\_open
- relevant: shelter\_open\_yn = yes
- select one:
  - less\_half : Less than half (few or some)
  - half : Around half
  - more\_half : More than half (most or all)
  - dontknow : I don't know or don't want to answer

**7. IN THE LAST MONTH, WHAT SHELTER BUILDING MATERIALS WERE AVAILABLE FOR MOST PEOPLE IN \${SETTLEMENT} ?**

- name: shelter\_materials
- select multiple:
  - grass : Grass
  - mud : Mud
  - timber : Timber
  - rope : Rope (local or NGO)
  - ps : Plastic sheet (local or NGO)
  - pole : Local pole
  - none : None
  - dontknow : I don't know or don't want to answer
  - other : other

**8. IN THE LAST MONTH, WERE ANY SHELTERS DESTROYED OR PARTIALLY DESTROYED BECAUSE OF FIGHTING IN \${SETTLEMENT} ?**

- name: shelter\_damage
- select one:
  - yes : Yes
  - no : No
  - dontknow : I don't know or don't want to answer

**9. IN THE LAST MONTH, WHAT PROPORTION OF SHELTERS WERE DESTROYED BECAUSE OF FIGHTING IN \${SETTLEMENT} ?**

- name: shelter\_destroyed\_percent
- relevant: shelter\_damage = yes
- select one:
  - less\_half : Less than half (few or some)
  - half : Around half
  - more\_half : More than half (most or all)
  - dontknow : I don't know or don't want to answer

**10. IN THE LAST MONTH, WAS THERE ANY FLOODING (WHICH MADE PEOPLE LEAVE THEIR HOME AND SLEEP SOMEWHERE ELSE) IN \${SETTLEMENT}?**

- name: shelter\_flooding
- select one:
  - yes : Yes
  - no : No
  - dontknow : I don't know or don't want to answer

**11. IN THE LAST MONTH, WHAT NON-FOOD-ITEMS WERE AVAILABLE AND USED BY IDPs IN \${SETTLEMENT} ?**

- name: nfi\_available
- relevant: idp\_now = yes
- select multiple:
  - blanket : Blanket
  - sleeping\_mat : Sleeping mat
  - jerry\_can : Jerry can
  - cooking\_pot : Cooking pot
  - mosquito\_net : Mosquito net
  - bucket : Bucket
  - soap : Soap
  - none : None
  - dontknow : I don't know or don't want to answer
  - other : Other

**12. HOW DID IDPs GET THE AVAILABLE NON-FOOD-ITEMS IN \${SETTLEMENT} ?**

- name: nfi\_source
- relevant: idp\_now = yes and nfi\_available != none and nfi\_available != dontknow
- select multiple:
  - pre\_displacement : Brought with them from their pre-displacement home
  - market : Purchased in market
  - local\_community : Shared with / provided by local (host) community
  - ngo : Provided by humanitarian actors
  - dontknow : I don't know or don't want to answer
  - other : Other

**13. IN THE LAST MONTH, WHAT WAS THE MAIN NON-FOOD-ITEM NEEDED BY IDPs IN \${SETTLEMENT} ?**

- name: nfi\_need1
- relevant: idp\_now = yes
- select one:
  - blanket : Blanket
  - sleeping\_mat : Sleeping mat
  - jerry\_can : Jerry can
  - cooking\_pot : Cooking pot
  - mosquito\_net : Mosquito net
  - bucket : Bucket
  - soap : Soap



- plastic\_sheet : Plastic Sheet
- rope : Rope
- pole : Pole
- dontknow : I don't know or don't want to answer
- other : Other

#### 14. IN THE LAST THREE MONTHS, HAS THERE BEEN A DISTRIBUTION OF NON-FOOD-ITEMS IN \${SETTLEMENT} ?

- name: nfi\_distribution
- select one:
  - yes : Yes
  - no : No
  - dontknow : I don't know or don't want to answer

#### K Water and Sanitation

[back to top](#)

You will now be asked about WASH conditions in \${settlement} now. Please be as detailed as possible.

#### 1. IN THE LAST MONTH, WERE ANY BOREHOLES PRESENT IN \${SETTLEMENT} ?

- name: water\_boreholes
- select one:
  - yes : Yes
  - no : No
  - dontknow : I don't know or don't want to answer

#### 2. IN THE LAST MONTH, WERE ANY BOREHOLES FUNCTIONAL (NOT BROKEN) IN \${SETTLEMENT} ?

- name: water\_boreholes\_functional
- relevant: water\_boreholes = yes
- select one:
  - yes : Yes
  - no : No
  - dontknow : I don't know or don't want to answer

#### 3. IN THE LAST MONTH, WHAT WAS THE MAIN SOURCE OF DRINKING WATER (CLEAN OR UNCLEAR) FOR PEOPLE IN \${SETTLEMENT} ?

- name: water\_now\_how
- select one:
  - borehole : Borehole
  - tapstand : Tap stand
  - water\_yard : Water yard
  - well : Well
  - water\_truck : Water truck
  - donkey : Donkey cart
  - swamp : Swamp
  - pond : Pond / haffir / toich
  - river : River / stream
  - other : Other
  - dontknow : I don't know or don't want to answer

**4. IN THE LAST MONTH, HOW LONG DOES IT TAKE MOST PEOPLE TO REACH, ACCESS, AND RETURN FROM THE \${WATER\_NOW\_HOW} WITH WATER IN \${SETTLEMENT} ?**

- name: water\_now\_time
- select one:
  - under\_30\_minutes : Under 30 minutes
  - 30\_minutes\_1\_hour : 30 minutes to less than 1 hour
  - 1\_hour\_half\_day : One hour to less than half a day
  - half\_day : Half a day
  - full\_day : More than half a day
  - dontknow : I don't know or don't want to answer

**5. IN THE LAST MONTH, WERE ANY LIVESTOCK OR OTHER ANIMALS USING THE SAME \${WATER\_NOW\_HOW} AS PEOPLE, OR KEPT CLOSE TO THE SAME \${WATER\_NOW\_HOW} ?**

- name: water\_source\_animals
- select one:
  - yes : Yes
  - no : No
  - dontknow : I don't know or don't want to answer

**6. IN THE LAST MONTH, HAS ANY PERSON NOT BEEN ABLE TO ACCESS THEIR PREFERRED WATER POINT BECAUSE THEY FEARED FOR THEIR SAFETY IN \${SETTLEMENT} ?**

- name: water\_safety
- select one:
  - yes : Yes
  - no : No
  - dontknow : I don't know or don't want to answer

**7. IS THE PREFERRED WATER SOURCE AVAILABLE IN BOTH WET AND DRY SEASON IN \${SETTLEMENT} ?**

- name: water\_source\_seasonal
- select one:
  - yes : Yes
  - no : No
  - dontknow : I don't know or don't want to answer

**8. IN THE LAST MONTH, WERE ANY PEOPLE USING LATRINES IN \${SETTLEMENT} ?**

- name: latrine\_now
- select one:
  - yes : Yes
  - no : No
  - dontknow : I don't know or don't want to answer

**8. IN THE LAST MONTH, WHAT PROPORTION OF PEOPLE WERE USING LATRINES IN \${SETTLEMENT} ?**

- name: latrine\_usage
- relevant: latrine\_now = yes

- select one:
  - less\_half : Less than half (few or some)
  - half : Around half
  - more\_half : More than half (most or all)
  - dontknow : I don't know or don't want to answer

**9. IN THE LAST MONTH, WHAT WAS THE MAIN REASON PEOPLE WERE NOT USING LATRINES IN \${SETTLEMENT} ?**

- name: latrine\_no\_usage
- relevant: latrine\_now = no or latrine usage = few or latrine usage = half
- select one:
  - none\_available : None available
  - not\_functional : Not functional / not finished construction
  - overcrowded : Not enough / overcrowded
  - dirty : Too dirty / full
  - far : Too far
  - cultural\_reasons : Cultural reasons
  - safety : Not safe to walk to or use
  - dontknow : I don't know or don't want to answer

**10. IN THE LAST MONTH, WHAT WERE MOST PEOPLE USING TO WASH THEIR HANDS IN \${SETTLEMENT} ?**

- name: hand\_washing
- select one:
  - soap : Soap (with water)
  - ash : Ash (with water)
  - sand : Sand (with water)
  - only\_water : Only water
  - dont\_wash : Don't wash hands
  - other : Other
  - dontknow : I don't know or don't want to answer

**M Education**

You will now be asked about education conditions in \${settlement} now. Please be as detailed as possible.

**1. IN THE LAST MONTH, WERE THERE ANY EDUCATION SERVICES PEOPLE COULD WALK TO AVAILABLE FROM \${SETTLEMENT} ?**

- name: edu\_now
- select one:
  - yes : Yes
  - no : No
  - dontknow : I don't know or don't want to answer

**2. IN THE LAST MONTH, WHAT WAS THE MAIN REASON EDUCATION SERVICES WERE NOT AVAILABLE FROM \${SETTLEMENT} ?**

- name: edu\_no\_reason
- relevant: edu\_now = no
- select one:

- no\_facilities : There were never education facilities near by
- facilities\_dest\_disas : Education facilities destroyed by natural disaster (flooding, fire)
- facilities\_dest\_con : Education facilities destroyed by conflict
- repurpose : Education facilities now being used for other purposes
- no\_teachers : There were never any teachers
- teachers\_fled : Teachers have been displaced
- teachers\_stop\_work : Teachers have stopped working
- security : Cannot access due to security concerns
- too\_distant : The facilities are too distant
- dontknow : I don't know or don't want to answer
- other : Other

### 3. IN THE LAST MONTH, WERE ANY 6-17 YEAR OLD (GIRLS / BOYS) ATTENDING SCHOOL IN \${SETTLEMENT} ?

- name: edu\_girl , edu\_boy
- relevant: edu\_now = yes
- select one:
  - yes : Yes
  - no : No
  - dontknow : I don't know or don't want to answer

### 3. IN THE LAST MONTH, WHAT PROPORTION OF 6-17 YEAR OLD (GIRLS / BOYS) WERE ATTENDING SCHOOL IN \${SETTLEMENT} ?

- name: edu\_girl\_attendance , edu\_boy\_attendance
- relevant: edu\_girl = yes , edu\_boy = yes
- select one:
  - less\_half : Less than half (few or some)
  - half : Around half
  - more\_half : More than half (most or all)
  - dontknow : I don't know or don't want to answer

### 4. IN THE LAST MONTH, WHAT WAS THE MAIN REASON GIRLS WERE NOT ATTENDING SCHOOL IN \${SETTLEMENT} ?

- name: attendance\_no\_reason1\_girls
- relevant: edu\_girl = yes and edu\_girl\_attendance != all
- select one:
  - fees : They cannot afford the school fees
  - need\_work\_ag : They need to work outside the home (agriculture, labour, cattle camps)
  - need\_work\_hh : They need to work in the home
  - no\_girls : Girls are not supposed to attend school
  - hunger : Hunger
  - insecurity : Area is too dangerous
  - no\_supplies : There are no school supplies (stationary, for example)
  - menstruation : Issues related to menstruation (lack of hygiene items and lack of WASH facilities at schools)
  - dontknow : I don't know or don't want to answer
  - other : Other

## 5. IN THE LAST MONTH, WHAT WAS THE MAIN REASON BOYS WERE NOT ATTENDING SCHOOL IN \${SETTLEMENT} ?

- name: attendance\_no\_reason1\_boys
- relevant: edu\_boy = yes and edu\_boy\_attendance != all
- select one:
  - fees : They cannot afford the school fees
  - need\_work\_ag : They need to work outside the home (agriculture, labour, cattle camps)
  - need\_work\_hh : They need to work in the home
  - hunger : Hunger
  - insecurity : Area is too dangerous
  - no\_supplies : There are no school supplies (stationary, for example)
  - dontknow : I don't know or don't want to answer
  - other : Other

### R Camp Coordination and Camp Management

You will now be asked about camp coordination and camp management (CCCM) in \${settlement} . Please be as detailed as possible.

## 1. IN THE LAST MONTH, WERE MOST IDPs RECEIVING FOOD, NON-FOOD-ITEMS OR SHELTER, FROM THE LOCAL COMMUNITY OR AN NGO IN \${SETTLEMENT} ?

- name: idp\_supported
- sub-group relevant: idp\_now = yes
- select one:
  - yes : Yes
  - no : No
  - dontknow : I don't know or don't want to answer

## 2. IN THE LAST MONTH, WERE LOCAL AUTHORITIES PRESENT AND RESPONSIBLE FOR IDPS IN \${SETTLEMENT} ? (RRC / ROSS)

- name: rrc\_present
- select one:
  - yes : Yes
  - no : No
  - dontknow : I don't know or don't want to answer

## 3. IN THE LAST MONTH, WAS ANY COMMUNITY LEADERSHIP PRESENT IN \${SETTLEMENT} ? (COMMITTEES, VILLAGE LEADERS, ETC)

- name: community\_leadership
- select one:
  - yes : Yes
  - no : No
  - dontknow : I don't know or don't want to answer

## 4. IN THE LAST MONTH, WHICH OF THE FOLLOWING GROUPS WERE REPRESENTED IN LOCAL LEADERSHIP IN \${SETTLEMENT} ? (READ OPTIONS OUT LOUD)

- name: community\_leadership\_groups
- relevant: community\_leadership = yes

- select multiple:
  - youth : Youth
  - women : Women
  - elderly : Elderly
  - disabled : Disabled
  - none : None

### 5. IN THE LAST MONTH, WERE ANY IDPs INCLUDED IN COMMITTEES OR LEADERSHIP STRUCTURES IN \${SETTLEMENT} ?

- name: idp\_leadership
- relevant: community\_leadership = yes and idp\_now = yes
- select one:
  - yes : Yes
  - no : No
  - dontknow : I don't know or don't want to answer

### 6. HOW OFTEN DOES THE COMMUNITY LEADERSHIP USUALLY MEET IN \${SETTLEMENT} ?

- name: leadership\_meetings
- relevant: community\_leadership = yes
- select one:
  - week : Every week
  - two\_weeks : Every two weeks
  - one\_month : Every month
  - few\_months : Every few months
  - emergency : In emergencies
  - dontknow : I don't know or don't want to answer

### 7. IN THE LAST MONTH, WHAT WAS THE MAIN SOURCE OF INFORMATION FOR MOST PEOPLE IN \${SETTLEMENT} ?

- name: info\_source
- select one:
- radio : Radio station (all types)
  - bodaboda : BodaBoda Talk Talk
  - tv : Television station
  - newspaper : Newspaper (paper)
  - facebook : Social Media (Facebook)
  - internet : Internet-other
  - phone : Mobile phone call
  - satellite : Satellite phone (Thurya)
  - loudspeaker : Loudspeakers / megaphone
  - in\_person : In person conversation
  - other : Other
  - dontknow : I don't know or don't want to answer

### 8. IN THE LAST MONTH, WHO PROVIDED THE MAIN SOURCE OF NEWS FOR MOST PEOPLE IN \${SETTLEMENT} ?

- name: info\_source\_who

- select one:
  - friend\_family : Friend / family
  - aidworker : Aid worker
  - leader\_chief : Community leader, religious leader or chief
  - home\_health : Community health worker
  - local\_authority : Local authority
  - transport\_driver : Transport driver
  - other : Other
  - dontknow : I don't know or don't want to answer

**O Land mines and unexploded ordnance**

You will now be asked about land mines and unexploded ordnance (UXO) in \${settlement} . Please be as detailed as possible.

**1. IN THE LAST MONTH, WERE THERE ANY AREAS BELIEVED TO HAVE MINES OR UNEXPLODED ORDNANCE IN \${SETTLEMENT} ?**

- name: mines
- select one:
  - yes : Yes
  - no : No
  - dontknow : I don't know or don't want to answer

**2. IN THE LAST MONTH, WHAT WERE ALL THE AREAS BELIEVED TO BE CONTAMINATED BY MINES OR UNEXPLODED ORDNANCE (UXO) IN \${SETTLEMENT} ?**

- name: mine\_areas
- relevant: mines = yes
- select multiple:
  - housing : Housing
  - school : School
  - medical : Medical point
  - water\_point : Water point
  - river : River/navigable water way
  - crop : Cropping land
  - graze : Grazing land
  - firewood : Firewood gathering location
  - roads : Roads
  - other : Other
  - dontknow : I don't know or don't want to answer

**3. IN THE LAST MONTH, HOW MANY LANDMINE/UXO RELATED ACCIDENTS HAPPENED IN \${SETTLEMENT} , INCLUDING BOTH ACCIDENTS WITH CIVILIANS AND LIVESTOCK?**

- name: mine\_acc\_numb
- relevant: mines = yes
- select one:
  - none : None
  - few : A few (1 to 2)
  - some : Some (3 to 5)
  - several : Several (6 to 10)

- many : Many (10+)
- dontknow : I don't know or don't want to answer

**Q Final Note**

Thank you for completing the survey.

**1. PLEASE TAKE THE GPS COORDINATES OF YOUR LOCATION.**

- name: gps
- relevant: type\_visit != phone
- geopoint

**2. PLEASE INCLUDE ANY USEFUL INFORMATION YOU (THE ENUMERATOR) LEARNED THAT WASN'T PART OF THIS QUESTIONNAIRE.**

- name: end\_survey\_note
- text

**3. HAVE YOU (THE ENUMERATOR) OBSERVED ANY SAFETY, PROTECTION, OR MALNUTRITION CONCERNS? IF YES, PLEASE DESCRIBE HOW WE CAN GET IN TOUCH WITH THE CASE.**

- name: end\_survey\_protection
- text

**ANNEX 4: DISPLACEMENT MAPPING FGD TOOL**

**Moderator Name:**

**Assistant Moderator Name:**

**Focus Group Name/Code:**

**Started at**

**Completed at**

County of Knowledge (the area we are seeking information about)	How do they know about this county? (Recently left, HH member visited, Regular contact etc.)	State of origin	Age	Sex

**Facilitator's welcome, introduction and instructions to participants [5 minutes]**

**Introductory note [2 minutes]**

- Welcome and thank you for volunteering to take part in this focus group discussion about the current crisis in South Sudan, which is about a better understanding of community and settlements in your country of origin. You have been asked to participate as your point of view and knowledge about your community situation and current needs will be used to inform response strategy and planning. I appreciate your time.
- **Please note that this meeting does not have any impact on whether you or your family receives assistance. These discussions are only meant to better understanding how you, your household, and the community perceive the situation in your villages of origin**



- **Anonymity:** I would like to assure you that the discussion will be anonymous. I and the other focus group participants would appreciate it if you would refrain from discussing the comments of other group members outside the focus group. If there are any questions or discussions that you do not wish to answer or participate in, you do not have to do so; however please try to answer and be as involved as possible.
- The discussion will take no more than one hour.
- We are asking for your ration card number because we might want to contact you again to know how things have changed in your home communities several weeks of months after this focus group discussion.

### Ground rules [2 minutes]

1. The most important rule is that only one person speaks at a time. There may be a temptation to jump in when someone is talking but please wait until they have finished.
2. There are no right or wrong answers
3. You do not have to speak in any particular order
4. When you do have something to say, please do so. There are many of you in the group and it is important that I obtain the views of each of you
5. You do not have to agree with the views of other people in the group you can say that.
6. Does anyone have any questions? (answers).
7. OK, let's begin

## Questioning Route

### INSTRUCTIONS TO MODERATORS

1. **Questions to participants:** these are the questions that should be read and communicated to the participants. If there are some specific vocabulary which may be unclear, do not hesitate to provide a definition for the purpose of the exercise.
2. **Probing questions:** Probes and clarifying questions are an important part of interviewing and have two main purposes: **1)** To help clarify what an interview respondent has said and **2)** To help get more detailed information on topics of interest. Probes allow the interview respondent to provide more than just a one-sentence answer to the questions you ask. **Do not read probing questions together with the questions to participants.** Use or adapt them if necessary

### Questions to Participants:

(Engagement question)

**INTRODUCE PARTICIPANTS TO THE MAP** – show them where we are now, and the area of interest on the map. Show them major towns in the region so they understand the map.

**Exercise to build participant familiarity with the map:** Through showing them key roads, towns etc., work with each participant to identify their home town on the map. Circle each participants home town/village on the map, if the settlement name doesn't exist, identify approximately where the village/town is and circle with the name. This helps participants orientate themselves to the map and ensures a reference point for discussions.

**Note on using map:** Wherever possible during the discussion mark details on the map, aka original homes prior to displacement, where people moved to, where was the fighting etc.

Have people recently (within the last month) left [AREA OF INTEREST]? If so, why?

- If violence, when? Was it a threat of violence, or did fighting suddenly start? Where is the violence expected to move to? To what geographic scale was the fighting (limited to one town or a larger region)?
- If lack of resources, why? What happened to mean resources were no longer available? What was the geographic scale of the lack of resources, the entire map or a specific sub-section?

What was the original population of [AREA OF INTEREST]?

- Approximately how many people have left?
- Approximately how many people remain?
  - o Host community (approx. numbers)
  - o IDPs? (approx. numbers)

Where did people go to? [Please find this on the map]

- Did everyone go to the same location? If not, please identify other directions people fled to?
- Did people go to one location and stay there or were their multiple phases of their journey, if so ask them about this,
  - o where did they originally go, how long did they stay there?
  - o where did they go next?
- What routes did people take (ask them to draw this on the map)?
  - o Were there any challenges on these routes, please ask them to specify and where
- How did they travel (on foot, car, bicycle)? How much did it cost?

Why did they come to/stay in this particular location?

- Were there other locations that they could have gone to? Is not, why did they come here?
- Are they free to move?

Do they intend to stay here in this location? Is so, why? If not, where do they plan to go?

- If they came here, is this a temporary move or a permanent one?
- Are they free to move?
- 

Do they personally expect to visit (temporarily or permanently) their homeland again? If so, why? Under what conditions would go back with their families permanently back to their homeland?

- How would they know if these conditions are in place?
- Do they expect these conditions to happen?

## ANNEX 5: FOOD SECURITY AND LIVELIHOODS FGD TOOL

Same intro and conclusion as Annex 4, only question route listed below

1. In a normal year, how does the community feed itself/obtain food or money to buy food? What are the common ways households feed themselves in this area (area however defined)?
  - **[Probing Questions]**
    - a. What are the primary crops your household relies on to access food? When do you normally have access to these crops as a food source?
    - b. What animals do the family own? Who looks after them? Are the animals nearby or further away? When does the household use these animals to seek food?
    - c. How does the household rely on fishing and hunting, who engages in this activity? When does the household normally engage in this activity?
    - d. How does the household rely on wild foods? When does this normally occur? Who in the household collects wild foods and how?
    - e. How does the household seek financial resources? (tea shops, casual labour, government salaries?) Who in the household seek these financial resources? Where are they?
    - f. Have members of the family been sent somewhere further away to seek resources for the family?
      - o What activities are they engaging in? (livestock herding, seeking work in urban centres, sought resources in another country)

2. In the last month, how have these activities changed? Are any of these activities no longer available? (this includes “normal seasonal changes” and also large changes to the context (aka fighting, flooding etc.) Why are these activities no longer available?
  - **[Probing Questions]**
    - g. Probe on how the following activities have changed (if applicable):
      - Crops
      - Livestock management
      - Fishing and hunting
      - Wild food gathering
      - Income generation activities
      - Migration patterns
3. Based on the previous discussion of your ability to access to resources to meet your family’s food needs, how would you present quality of life (e.g. very good, good, neutral, bad, very bad)?
  - **Note to facilitator:** Remind participants that the determination of this rating should be based on availability of resources to meet household needs.
  - **[Probing Questions]**
    - h. Has your present quality of life improved or worsened over the last month?
    - i. Why has your quality of life improved/worsened?
    - j. When did it become worse/better?
4. Please mark on the map (state level) where access to resources is good and where access to resources is limited and explain why for each point.
  - **[Probing Questions]**
    - k. [Participatory Mapping] Direct participants to the map and ask participants to mark the following:
      - l. Where on the map would you say quality of life is bad? [red marker shaded]
      - m. Where on the map would you say quality of life is good? [green marker shaded]
    - n. Please explain why you think that different areas have different levels of quality of life?

## Stage 2: RISK RESILIENCE AND MITIGATION [20 minutes]

5. ~~Thinking back to a time when your family had insufficient food or a lack of resources to buy food, what are the usual activities your family adopt to seek additional resources or changing the use of existing resources to meet your family’s food needs?~~ Please think back to a time when your family had insufficient food or a lack of resources to buy food. During this time of little food access, what were the usual activities your family adopted to seek additional resources or change the use of existing resources to meet your family’s food needs?
  - **[Probing questions]**
    - a. Are residents in your settlement of knowledge currently able to use these strategies to cope with a lack of resources?
    - b. If not, why are they unable?
6. Have the strategies used by residents in your settlement of knowledge to cope with a lack of resources recently changed?
  - **[Probing questions]**
    - a. If these strategies have recently changed, what strategies are you now using?
    - b. Why have these strategies recently become unavailable?
7. Do families in your settlement rely on social, family networks, neighbors and friends to share resources and receive support when facing food or resource shortages?
  - **[Probing questions]**
    - a. Could you please describe how these networks of support work?
    - b. Are these networks of support still functioning?
    - c. If not, why not?
    - d. If not, since when have these support networks ceased to function?

## ANNEX 6: SERVICE ACCESS GAPS FGD TOOL

Same intro and conclusion as Annex 4, only question route listed below

### STAGE 1: Service Access Gaps

#### Food Security and Livelihoods (FSL)

What is currently the main source of food? Which other sources of food do you use, including coping strategies?

- *Is there sufficient access to food [AREA OF INTEREST]?*
- *If no, which are the reasons for absence/insufficient access to food?*
- *If insufficient access to food, what are the main coping strategies being used?*
  - o *How often do people use them?*

Is there a functioning market in the area?

- *If yes, are all items available that were available previously? If not, why not?*
- *If yes, did the prices change?*

Are people currently engaging in livelihood activities?

- *If no, why?*
- *If yes, what are the main livelihood activities in [AREA OF INTEREST]?*
- *Do you have access to land for cultivation? If no, why?*
- *Did you cultivate during the last cultivation season? (Note to FC: please follow up if access to land and cultivation activity have contradicting statements)*
  - o *If no, why?*
  - o *If yes, did you cultivate more or less than the previous years? Explain reasons.*
- *Do people in the settlement possess livestock?*
  - o *Which is the main livestock (e.g. goats, cattle etc.?)*
  - o *Where is the livestock currently?*
  - o *Is anyone taking care/ looking after the livestock currently?*
  - o *Have there been any incidents of killing or stealing/raiding of livestock? If so, when?*
- *Are people in the settlement engaged in casual or contracted labour? If yes, what type of work are they engaging in?*

#### HEALTH AND WASH

To what extent is there access to health care in the [AREA OF INTEREST]?

- *If yes, what facilities are there?*
- *If yes, is there enough medical staff? Why or why not?*
- *If yes, are there enough drugs available? Why or why not?*
- *If no access, which are the reasons for absence? (e.g. destroyed, never there etc.)*
- *If no access, how do people cope with lack of health services? (e.g. carry the patient-how far, traditional medicine- which one?)*

What are the main causes of morbidity (e.g. sickness or injury?) Please specify.

To what extent is there clean/safe drinking water in the [AREA OF INTEREST]?

- *If yes, what is the source of safe drinking water?*

- *If no, what are the reasons for lack of clean/safe drinking water? (e.g. borehole was never there, borehole lacks maintenance, borehole has been destroyed, borehole has not enough water?)*
- *If no, which sources do people use alternatively?*
  - o *What are the side effects of drinking from those sources?*

Do people use latrines regularly? If no, why?

## EDUCATION

To what extent are education services available in the [AREA OF INTEREST]?

- *If not, what are the main reasons for no access to education ?*
- *If yes, does the school have enough teachers?*
- *How are the teachers supported? (e.g. NGOs, government, informal school fees?)*
- *If yes, do all boys attend school? If no, which are the main barriers?*
- *If yes, do all girls attend school? If no, which are the main barriers?*

## SHELTER

Is everyone sleeping under a shelter [AREA OF INTEREST]? If not, why?

- *Which is the main shelter type for local communities?*
- *Which is the main shelter type for IDPs?*
- *Have any shelters been burned/destroyed?*
  - o *If so, how many? And when?*
  - o *If so, how many have been rebuilt?*
- *Do people have access to NFIs?*
  - o *If not, which items are most needed?*

## ANNEX 7: GUIDE TO REACH SOUTH SUDAN ACRONYMS

ACLED : Armed Conflict Location and Event Dataset  
AM : Assessment Manager  
AO : Assessment Manager  
AOK : Area of Knowledge  
CC : Country Coordinator  
CLIMIS : Crop and Livestock Market Information System  
CM : Communications Manager  
DRT : Data review team  
DTM : Displacement Tracking Matrix  
FAO : Food and Agriculture Organization  
FC : Field Coordinator  
FGD : Focus Group Discussion  
FSL : Food Security and Livelihoods  
FSNMS : Food Security and Nutrition Monitoring Survey  
GIS : Geographic Information Science Team  
GVA : Geneva Review Team  
IDP : Internally Displaced Person  
IOM : International Organization for Migration  
IPC : Integrated Phase Classification

KI : Key Informant

OCHA : Office for Coordination of Humanitarian Affairs

PoC : Protection of Civilians Site

SFC : Senior Field Coordinator

SM : Senior Management

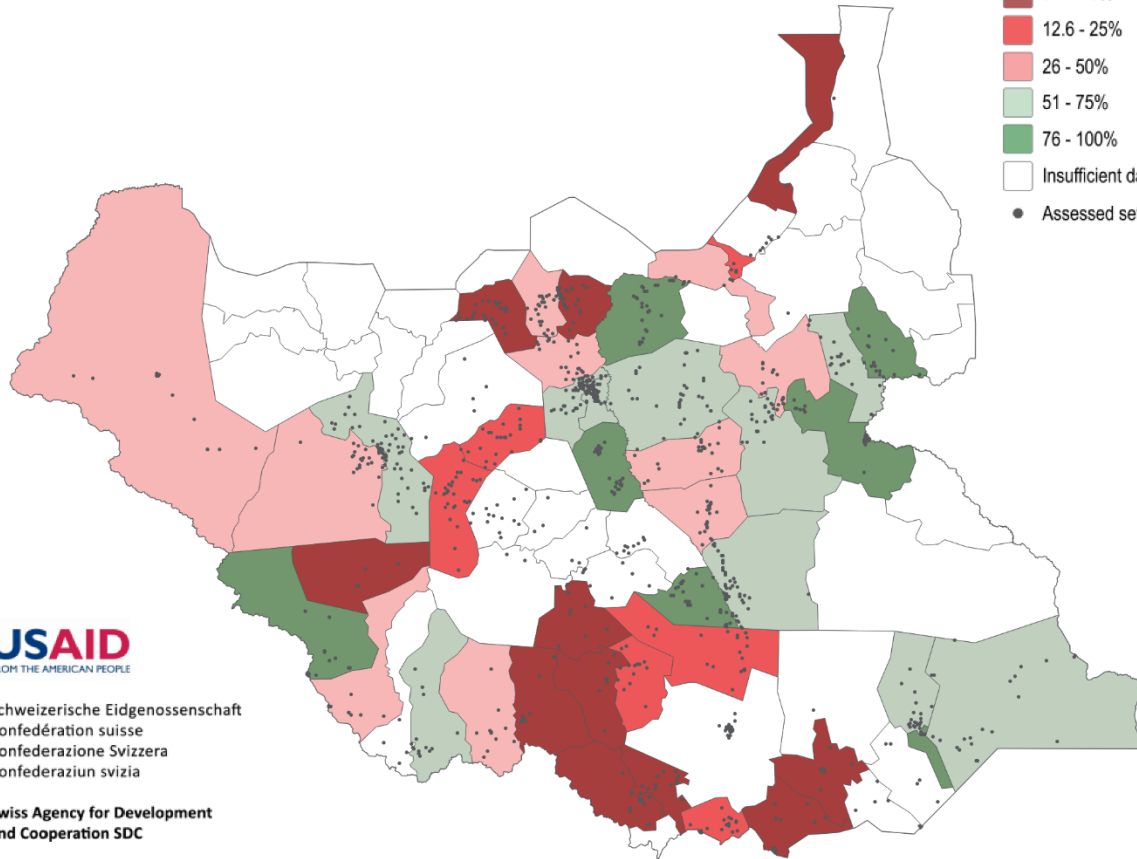
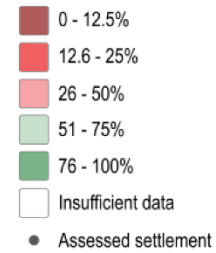
WASH : Water, Sanitation and Hygiene


WFP : World Food Programme

## ANNEX 8: EXAMPLE AOK QUANTITATIVE DATA PRESENTATION

Map 2: Percentage of assessed settlements reporting adequate access to food, January 2018.

### Assessed settlements reporting adequate access to food - January 2018



 Schweizerische Eidgenossenschaft  
Confédération suisse  
Confederazione Svizzera  
Confederaziun svizra

Swiss Agency for Development  
and Cooperation SDC

REACH  
An initiative of  
IMPACT Initiatives  
ACTED and UNOSAT