

NIGERIA - Borno State - Monguno LGA Settlement Profiling

General Infrastructure - As of October 2018

For Humanitarian Purposes Only
Production date :10 Jan 2019

Infrastructure

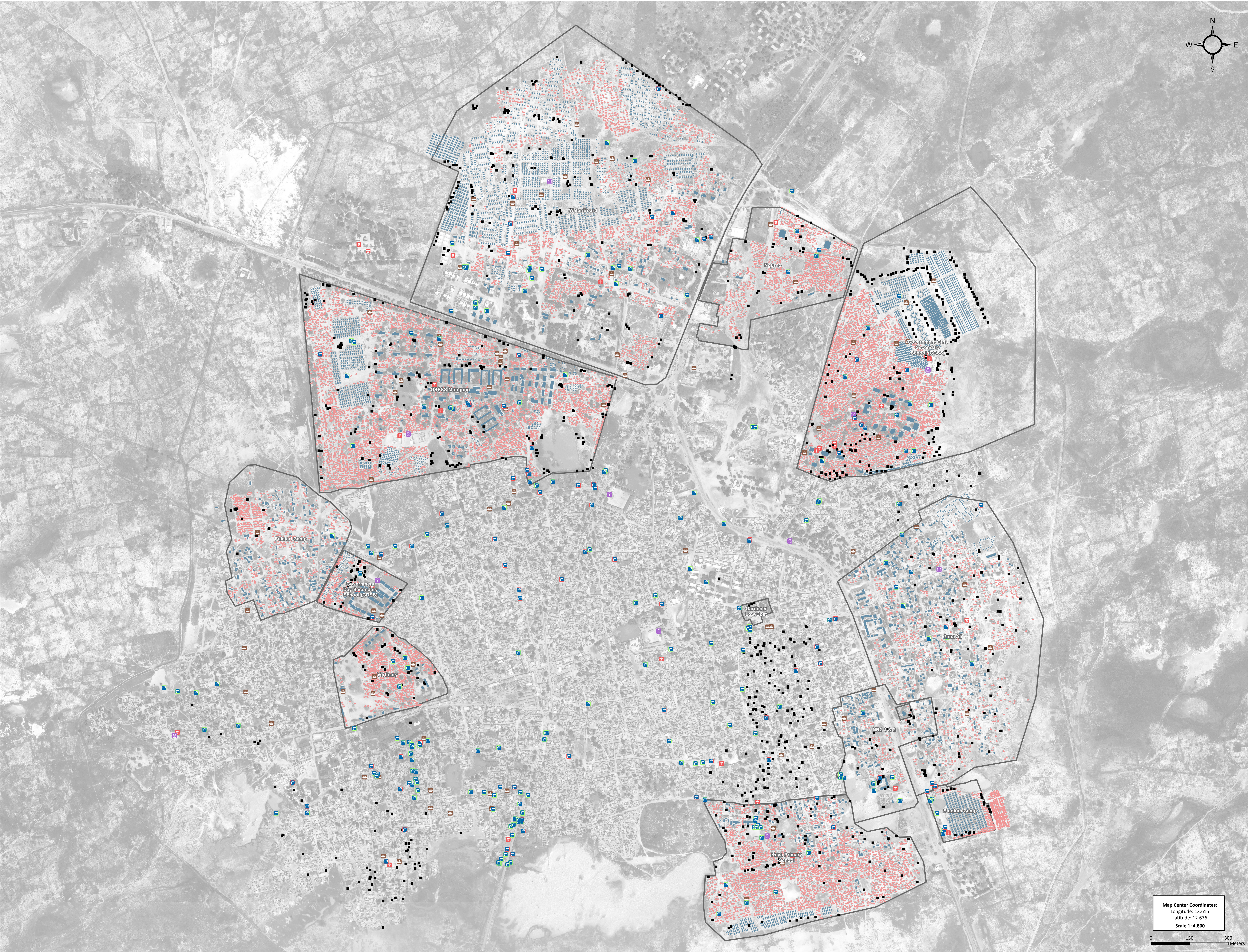
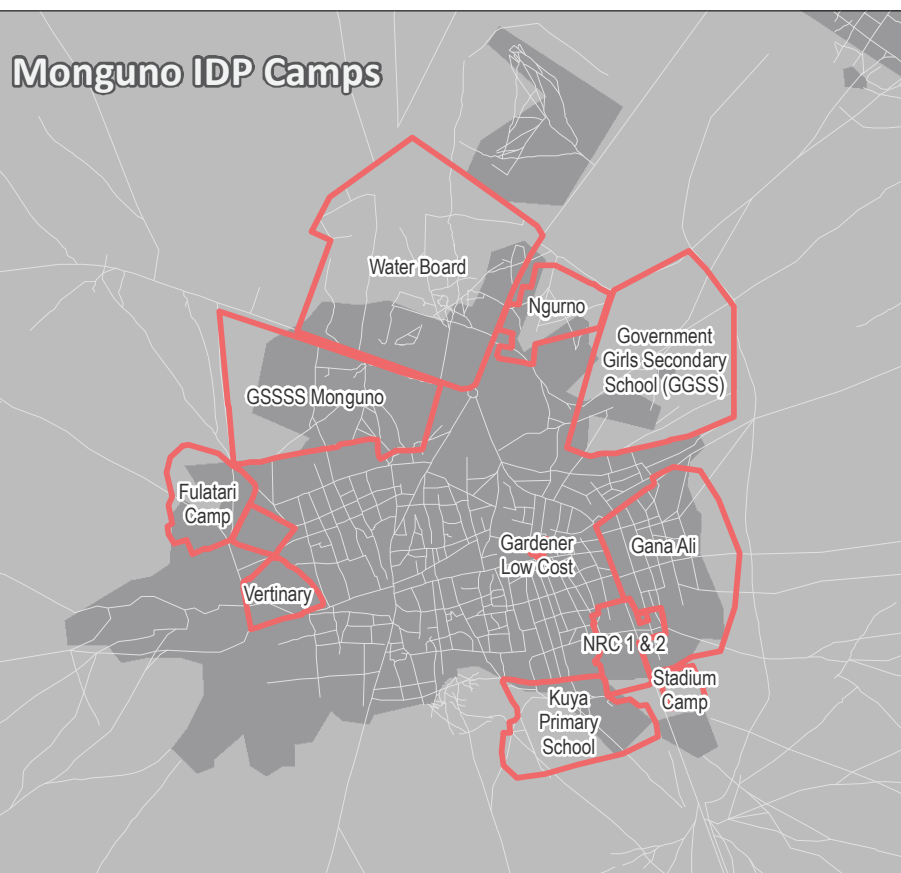
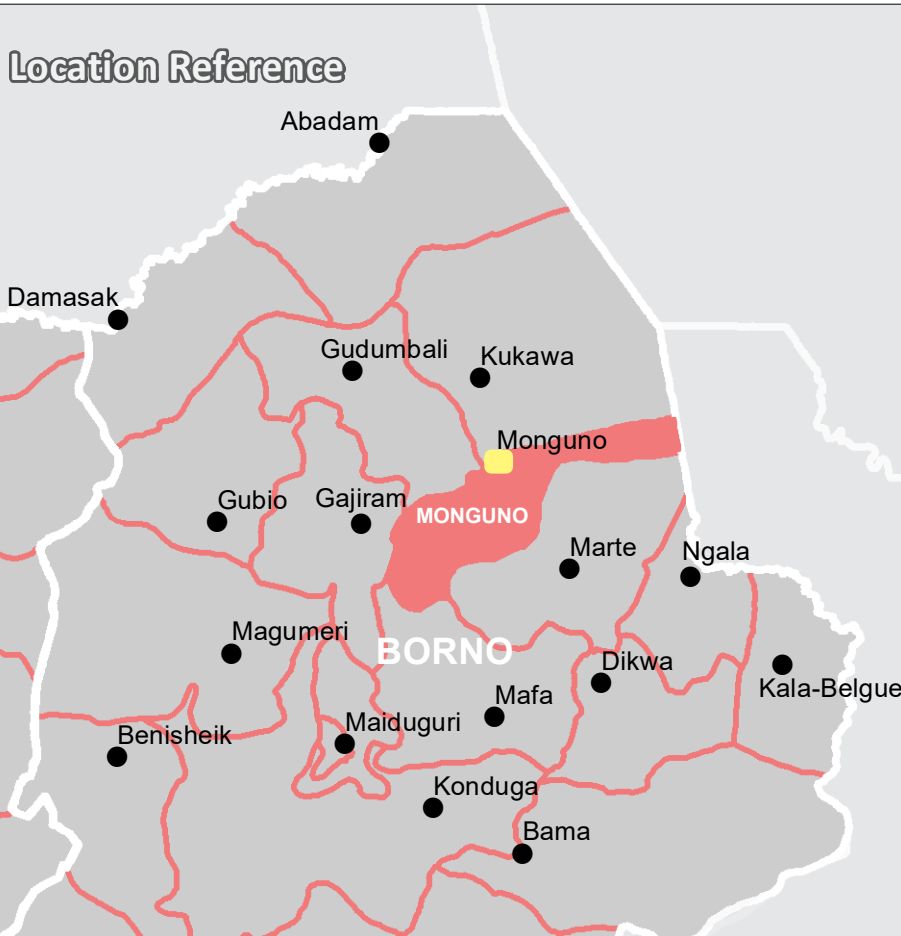
- Water Point (Fully/Partially Functional) (192)
- Water Point (Not Functional) (81)
- School (11)
- Market (82)
- Health Center (29)
- Latrines (1,082)
- Makeshift Shelters (13,444)
- Shelters and Tents (6,294)
- Camp Boundaries (14)

Camp infrastructure: REACH Initiative, October 2018
Administrative boundaries: OCHA
Satellite Imagery: GeoEye-1, 30 November 2018,
©2018 DigitalGlobe
Source: Humanitarian Information Unit, NextView License
Projection: WGS 1984
File: REACH_NGA_Map_LGA_Profiling_Infrastructure_
Monguno_11Jan2019_A0
Contact: reach.nigeria@reach-initiative.org

Note: Data, designations and boundaries contained on this map
are not warranted to be error-free and do not imply acceptance by
the REACH partners, associates or donors mentioned on this
map.



Funded by
European Union
Civil Protection and
Humanitarian Aid



Map Center Coordinates:
Longitude: 13.616
Latitude: 12.676
Scale 1:4,800