

AFGHANISTAN - Nangarhar Province

Jalalabad District - PD 07 / ABR infrastructure mapping - December 2021

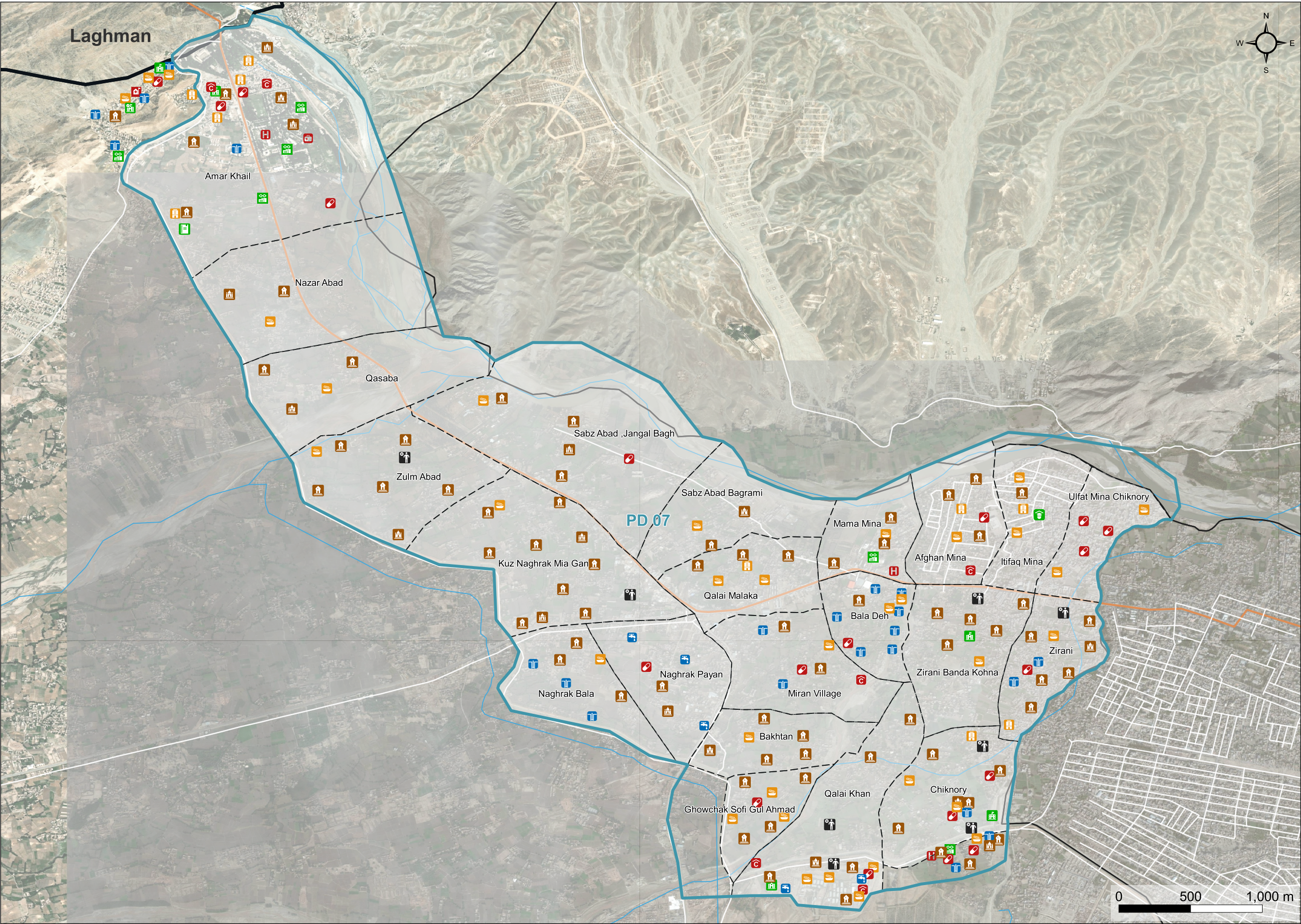
For Humanitarian Purposes Only
Production date : 17-May-2022

Boundaries

- Gozar boundary
- Nahiya boundary
- District boundary
- Province boundary

Infrastructures

- Public well
- Public tap
- Public borehole
- Basic Health Centre
- Comprehensive health centre
- Clinic
- Hospital
- Family health house
- Health sub-centre
- Medical Camp
- Pharmacy
- Primary school
- Secondary school
- High school
- University
- Technical School
- Madrasa
- Technical training center
- Early childhood education
- Large bazaar
- Small bazaar
- Friday mosque
- Small mosque
- Cemetery
- Main road



Data sources:
ISet boundary and Infrastructures: REACH
Admin Boundaries and roads: AGCHO
Coordinate System: GCS WGS 1984
Contact: reach.mapping@impact-initiatives.org

Imagery:
Satellite Imagery: Maxar (WV03) from 17 November 2019
Copyright: ©2019 DigitalGlobe
Source: ESRI
File:
REACH_AFG_Map_ABR_infrastructure_mapping_Nang
arhar_Jalalabad_PD 07_17May2021_A3L

Definition:
Gozar: Urban unit denoting a community, analogous to a
neighbourhood

Note: Data, designations and boundaries contained on
this map are not warranted to be error-free and do not
imply acceptance by the REACH partners, associates,
donors mentioned on this map.