



Shariya Formal Camp Profile

Duhok Governorate, Iraq

Iraq Internal Displacement Crisis

1 December 2014

Summary

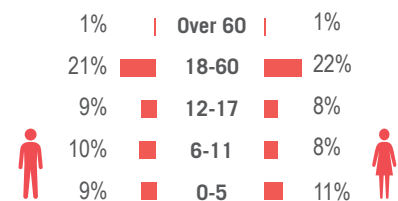
Shariya IDP camp was established in November 2014 as a formal site for internally displaced persons (IDPs) who had settled in the area. The main area of origin of the resident IDPs is Sinjar, Ninewa Governorate.

Primary data was collected through household surveys on 01/12/2014. Additional information from camp managers, marked (*) is correct as of 01/12/2014.

Demographics

50% male / 50% female

nr. children 0-17: *** 10,605



Reported Priority Needs

The three non-cash priority needs reported by the camp population were: †

1	Food	98%
2	Shelter improvement	80%
3	Sanitation	49%

† % of respondents who chose this need from a choice of five as one of their top three priority needs.

Sectoral Overview

		Target**	Achieved	
Education	% of children aged 6-11 enrolled in primary school	100%	0%	●
	% of children aged 12-17 enrolled in secondary school	100%	0%	●
Food	% of households received Family Food Parcel or equivalent in the past month	100%	66%	●
NFIs	% of households accessed NFI assistance since the onset of the crisis	100%	100%	●
Health	Health services are available on-site or within walking distance	Yes	Yes	●
CCCM	Average open area per household	min. 30m²	27.2m²	●
Protection	% of IDPs registered on an individual basis	100%	100%	●
Shelter ***	% of households accessed shelter assistance since the onset of the crisis	100%	99%	●
	Average covered area per person	min. 3.5m²	4.2m²	●
	Average number of individuals per tent	max.5	4.7	●
Water & Sanitation*	Litres of water available per person per day	min. 20L	Unknown	●
	# of persons per latrine	max. 20	345	●
	# of persons per shower (showers and latrines in Shariya camp are not gender specific).	max. 20	345	●

**Targets are based on minimum standards agreed with the CCCM Cluster, Iraq. ● Target reached, ● Target more than 50% reached, ● Target less than 50% or not at all reached.

*** Total population figure from UNHCR, *UNHCR IDP Operational Update* (1-15 November 2014) p. 1.

Camp Overview

Camp management:* DMC

Camp population:*** 19,100

Accommodation:* 4000Tents

Planned capacity:* 4000 Tents

Camp area: 0.36km²

Implementing Agencies

EDUCATION: UNICEF / DoE

FOOD: ACTED / WFP

HEALTH: WHO

NFI: AFAD

PROTECTION: UNHCR / Harikar

SHELTER: AFAD

WASH: UNICEF / SCI

CCCM Mechanisms

The following structures are in place:*

✓ Camp community leadership *

78% said it was unelected.

✗ Other camp committees in place *

Location Map



Key Developments

89% said they had enough drinking water in the past week and 94% said they had enough water for purposes other than drinking. All IDPs had received NFI assistance. This included hygiene kits (received by 30%), clothing (25%) and footwear (14%).

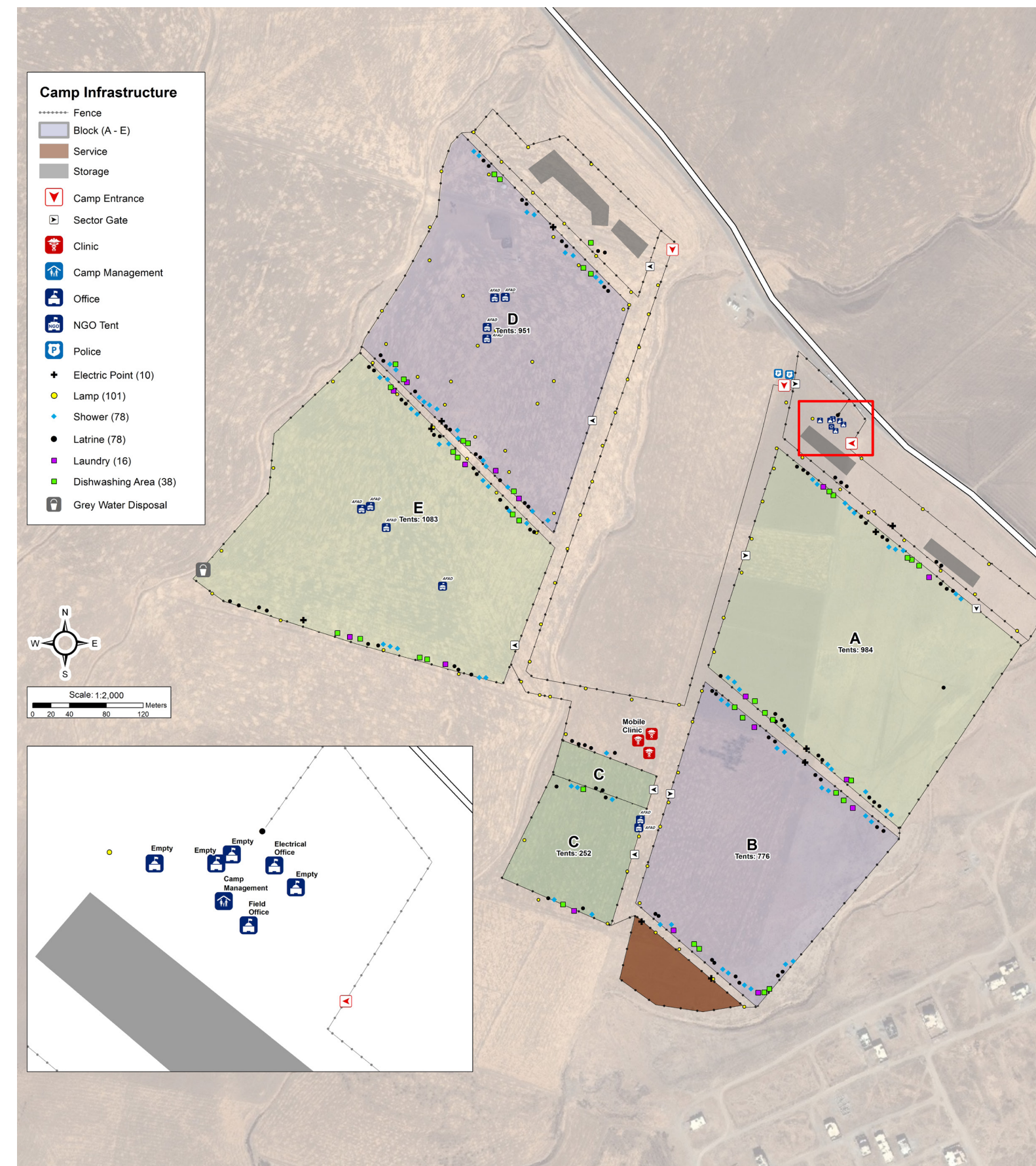
Identified concerns with the current location included no livelihood opportunities (raised by 28%), lack of assistance (20%), that there was no school (16%) and a lack of access to services (13%).

5% had received a food package in the last month composed of less than a standard Family Food Parcel (staple carbohydrates, pulses, oil, sugar and iodized salt).

72% said there was not a safe space for children. 8% of households had a member missing an ID card, 30% had a pregnant or lactating woman and 29% had a member missing civil documents.

Shariya Formal Camp Map

Lat: 36° 47' 37.381" N Long: 42° 57' 45.29" E



For more information on this profile please contact:
CCCM Cluster: iraqimo@cccmcluster.org
REACH Initiative, Joseph Slowey: iraq@reach-initiative.org

REACH An initiative of
IMPACT Initiatives
ACTED and UNOSAT

CCCM CLUSTER
SUPPORTING DISPLACED COMMUNITIES