



IDP Camp Profile - Laylan 2

Kirkuk, Iraq
May 2017

Management agency: Government and YAO Organization
Manager/Focal point: ChiNour Mahmoud ismaeel
Phone number: 7701371231
Email: Cismaeel@irdglobal.org
Registration actor: Government and YAO Organization

Summary

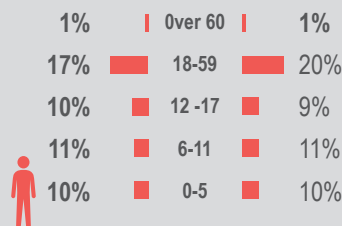
This profile provides an overview of conditions in Laylan 2 camp. Primary data was collected through household surveys on 18/5/17. Households were randomly sampled to a 95% confidence and 10% margin of error, based on population figures provided by CCCM. In some cases, additional information from camp managers has been used to support findings.

Camp Overview

of individuals: 4,542
of households: 768
Date opened: 1/12/2016
Occupied number: 938
Ongoing extension: No
Planned capacity: 938
Camp area: 278,590m²

Demographics

49% male / 51% female

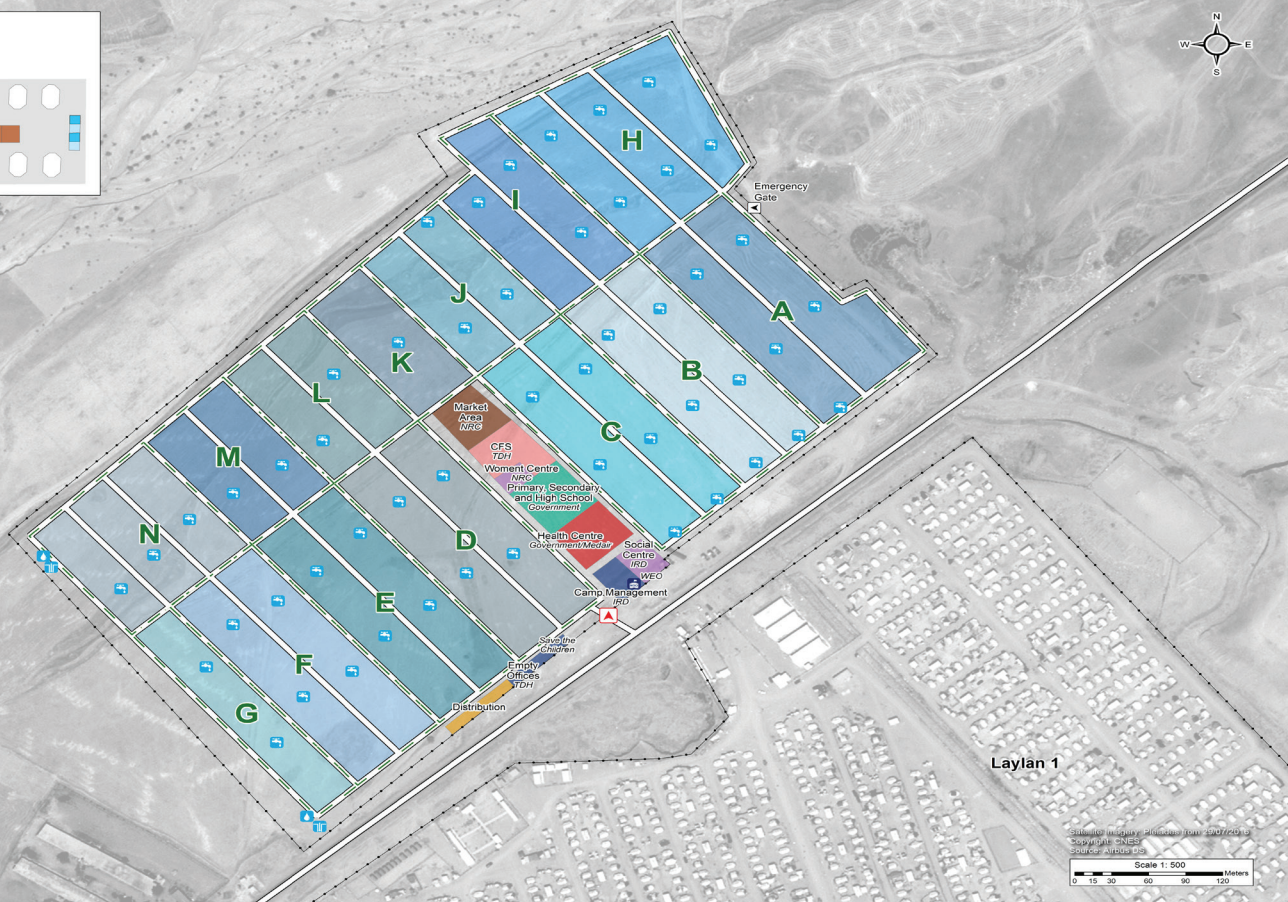
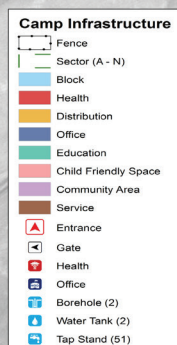
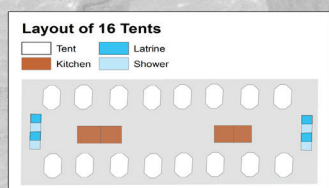


Location Map



IDP Camp Map - Laylan 2

Lat.35° 19' 46.463" N Long. 44° 31' 45.155" E



Sectoral Minimum Standards

		Target	Previous Round	Current Round	Achievement
Education	% of children aged 6-11 attending formal school	100%	80%	85%	●
	% of children aged 12-17 attending formal school	100%	62%	76%	●
Food	% of households accessed Family Food Parcel or equivalent in the past month	100%	89%	89%	●
Health	Health services are available on-site or within walking distance	Yes	Yes	Yes	●
CCCM	Average open area per household	min. 30m ²	325m ²	324m ²	●
Protection	% of IDPs registered on an individual basis (MODM/DDM)	100%	22%	67%	●
Shelter	Average covered area per person	min 3.5m ²	3.1m ²	3.1m ²	●
	Average number of individuals per shelter	max 5	5	6	●
WASH	# of persons per latrine	max. 20	20	19	●
	# of persons per shower	max. 20	20	19	●
	Frequency of solid waste disposal at least weekly	Min. weekly	Yes	Yes	●

Targets based on minimum standards agreed with the CCCM Cluster, Iraq. Findings based on household-level data, enumerator field observations, and camp management documentation
● Minimum standard reached, ● More than 50% minimum standard reached, ● Less than 50% of minimum standard reached or not at all





IDP Camp Profile - Laylan 2

Kirkuk, Iraq
May 2017

Management agency: Government and YAO Organization
Manager/Focal point: ChiNour Mahmoud ismaeel
Phone number: 7701371231
Email: Cismaeel@irdglobal.org
Registration actor: Government and YAO Organization

Shelter

Top observed shelter type

Tent 100%

Top reported needed shelter items

Sun shading net 98%

Tarpaulin 78%

Timber 55%

Top reported needed basic items

Cooking fuel 74%

Kerosene gas stove 73%

Kitchen set 44%

Top reported needed winter item

Kerosene heater 40%

Top reported needed summer item

Rechargeable fan 96%

Food Security

Reported access to food assistance

47% accessed food assistance in past month

27% received Public Distribution System (PDS) in past month

Top three food consumption coping strategies

Cheaper food 47%

Eating fewer meals 20%

Borrowed food 19%

WASH

Latrines and showers

100% reported public or communal latrines

100% public/communal latrines lockable from the inside

100% public/communal latrines with functioning lighting

Top three reported methods of waste removal

Collected 100%

n/a n/a

n/a n/a

Reported drinking water sources

0% connection inside the home to collective water storage

0% connection inside the home to private water storage

100% communal water tap outside the shelter

Access to water

0% reported 24 consecutive hours without access to water in the past month

Community Organisation

IDP committees

100% reported awareness of IDP committee(s)

Complaints mechanism

11% made a complaint about conditions or assistance

Protection

Family Separation

0% reported hosting unaccompanied or separated minors

5% reported that other family members intended to join them

Vulnerable groups

Pregnant / lactating women 3%

Chronically ill individual(s) 4%

Disabled individual(s) 4%

Female headed households 15%

Intentions

5% planned to move to a different location in next 3 months

Restrictions

85% reported being able to leave the camp temporarily (e.g. to go to the market, for livelihood opportunities)

Livelihoods

1% reported as being economically inactive

Top three income sources*:

Unskilled labour 34%

Humanitarian aid 28%

Low skilled service 24%

*Households were asked to select all income sources within household.

Top three reported livelihood coping strategies

Support from friends 38%

Charitable donations 18%

Sold assistance 12%