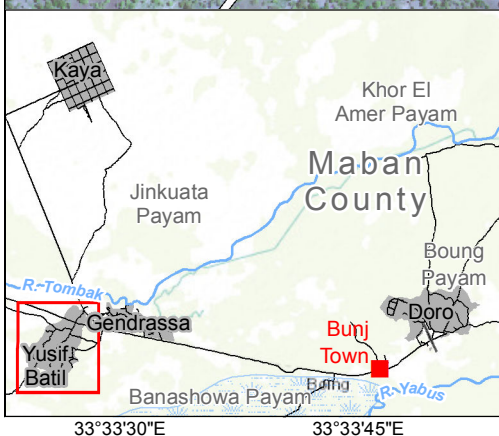
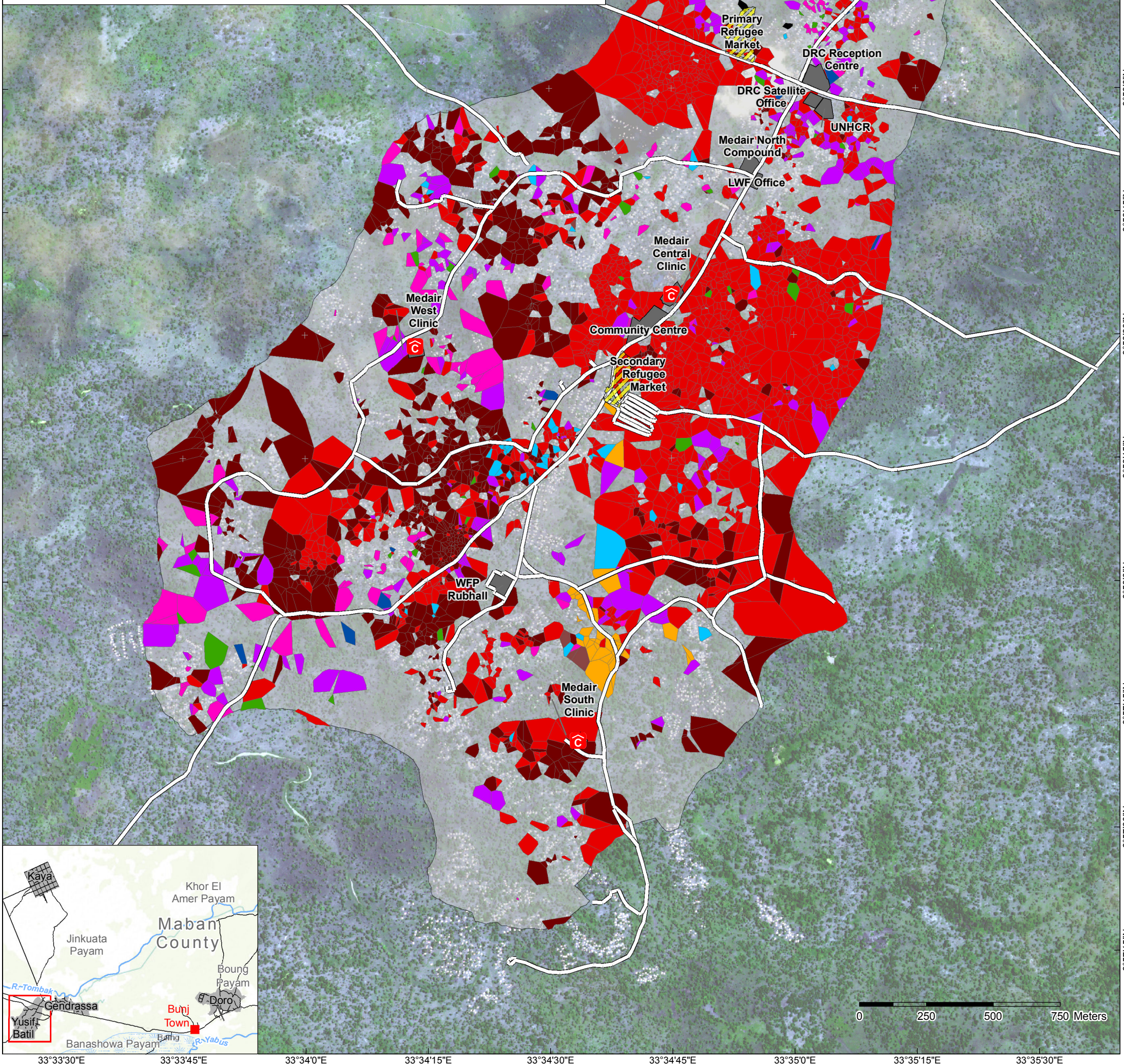


Background: This map shows the priority needs identified by refugees based on a camp survey of 7,189 households by REACH in July 2015. This is approximately 78% of the 9,242 households registered by UNHCR in January 2015. The data shown is expected to be representative of the population in Yusif Batil Camp due to the robust sampling methodology used.

Methodology: Vononoi Polygons were generated using the GPS locations of each household so that every location within the polygon is closest to the point inside that polygon than any other point. This is designed to anonymize results and make the data easier to interpret. **The polygons on this map should in no way be considered as a plot of land that the household owns.**

Results: Of those who visited a health clinic since coming to Yusif Batil, 49% of respondents had had a family member fall ill since arriving in Yusif Batil camp. Of these, 55% went to Medair Central clinic, 28% went to Medair West clinic, 9% went to MSF Holland hospital, 4% went to Bunj hospital, 2% went to one of the IMC clinics in Gendrassa camp, 1% went to Medair South clinic, and another 1% got help from a traditional healer. Other responses were negligible.



Source of Health Assistance

- Bunj Hospital
- IMC Clinic (Gendrassa)
- IMC Health Outpost (Gendrassa)
- Medair Central Clinic
- Medair West Clinic
- Medair South Clinic
- MSF Holland Hospital
- No Health Assistance
- Traditional Healer
- Juba

Health Centres

- H Hospital
- C Clinic

Camp Features

- Camp Boundary
- Compound Boundary
- Market
- Roads

Data sources: roads: PAE (2015); Water Points: Medair (2015); shelters: UNOSAT (2013); satellite imagery: WV-2 satellite (2013); administrative units, hydrology: OCHA COD; Basemap: Esri; All other features: REACH (2015).

Coordinate System: GCS WGS 1984
Contact: reach.mapping@impact-initiatives.org

Note: Data, designations and boundaries contained on this map are not warranted to be error-free and do not imply acceptance by the REACH partners, associates, donors or any other stakeholder mentioned on this map.

File: REACH_SSD_Map_YusifBatil_CAMP_HealthAssistance_07JUN2015_A3