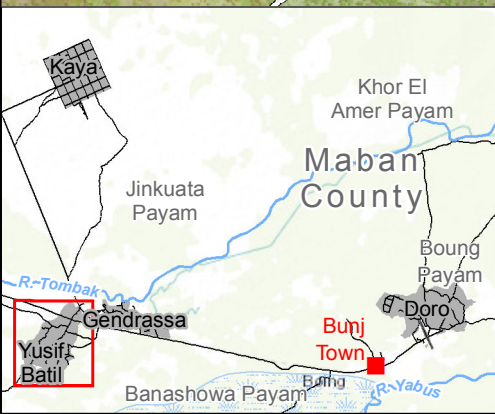
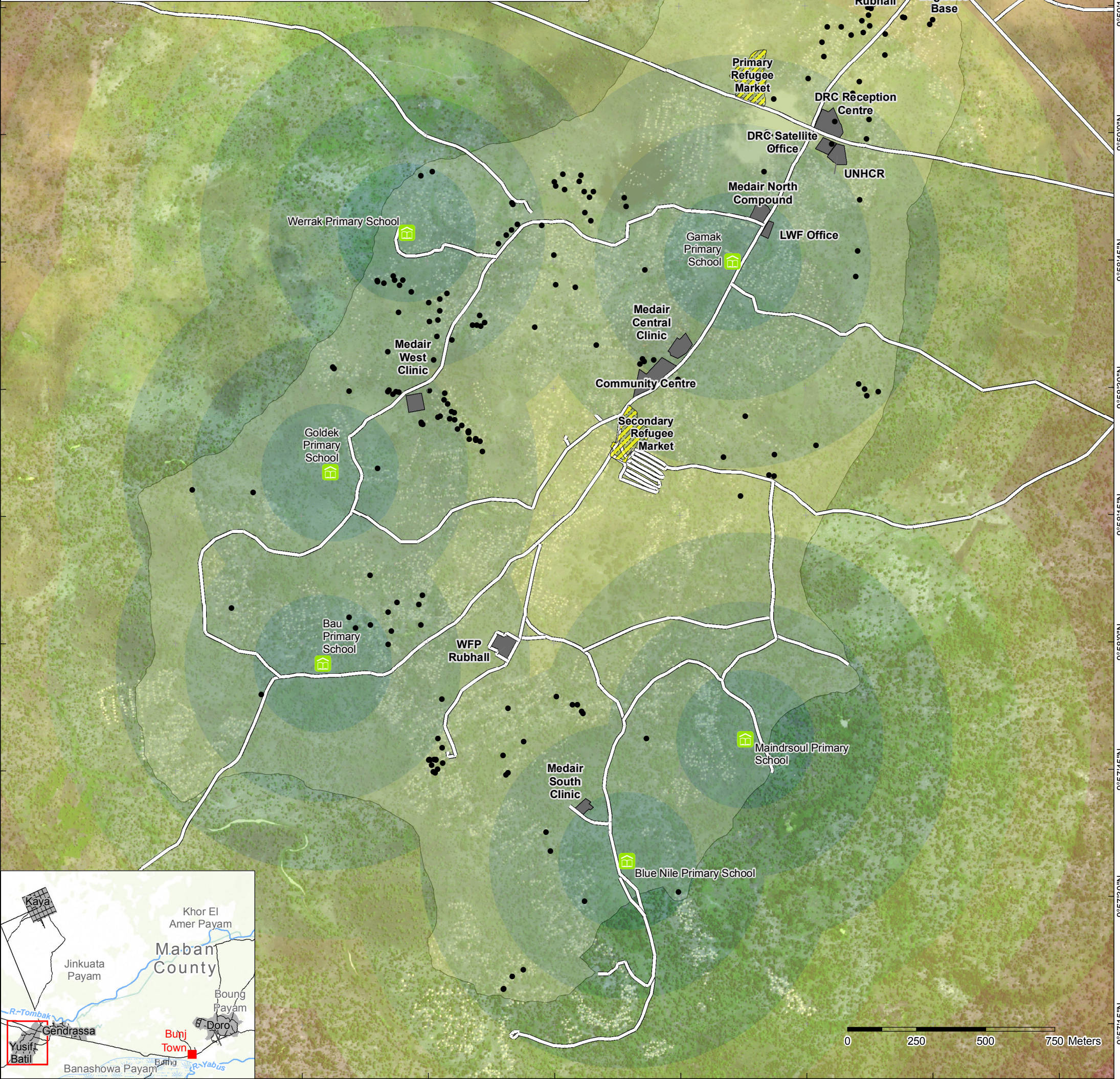


Yusif Batil Camp Households with Children not Going to School Because it is "Too Far," and Distance from School - 07 July 2015

Introduction: This map shows the locations of households who's children are not going to school in Yusif Batil camp. Results are based on a camp survey of 7,189 households by REACH in July 2015. This is approximately 78% of the 9,242 households registered by UNHCR in January 2015. The data shown is expected to be representative of the population in Yusif Batil camp due to the robust sampling methodology used. Distance (in meters) from schools in the camp is shown for reference.

Results: 1002 (14%) of all families surveyed stated that they had a child in their household of school-going age that was not attendign school. Of these, 185 (18%) of households stated that the reason that their children were not attending school was because the school was, "too far." The 3% of households stating that the school is, "too far" are depicted by black dots on the map.



- Household Reporting that School is, "Too Far"
- 2000
- Schools**
 - 🏫 Secondary School
 - 🏫 Primary School
- Camp Features**
 - ▭ Camp Boundary
 - ▭ Compound Boundary
 - ▨ Market
 - Roads
- Distance from Primary School (in Meters)**
 - 250
 - 500
 - 750
 - 1000
 - 1250
 - 1500
 - 1750

Data sources: roads: PAE (2015); Water Points: Medair (2015); shelters: UNOSAT (2013); satellite imagery: WV-2 satellite (2013); adminisitrative units, hydrology: OCHA COD; Basemap: Esri; All other features: REACH (2015).

Coordinate System: GCS WGS 1984
Contact: reach.mapping@impact-initiatives.org

Note: Results were aggregated up to combine all, "child is working" options as a sigle response. Only the top three reported reponses are included on this map. Data, designations and boundaries contained on this map are not warranted to be error-free and do not imply acceptance by the REACH partners, associates, donors

File: REACH_SSD_Map_YusifBatil_CAMP_SchoolTooFar_09JUN2015_A3