



# IDP Camp Profile - Laylan IDP

Kirkuk, Iraq  
January 2017

Management agency: UNHCR  
Manager/Focal point: Zerya Hasan Abdulkarim  
Phone number: 7706163544  
Email: Zabdalkarem@irdglobal.org  
Registration actor: UNHCR

## Summary

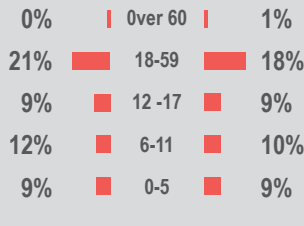
This profile provides an overview of conditions in Laylan IDP camp. Primary data was collected through household surveys on 23-01-2017. Households were randomly sampled to a 95% confidence and 10% margin of error, based on population figures provided by CCCM. In some cases, additional information from camp managers has been used to support findings. Round VI of data collection was in August 2016

## Camp Overview

# of individuals: 10,830  
# of households: 1,995  
Date opened: 18-11-2014  
Occupied number: 2,005  
Ongoing extension: no  
Planned capacity: 2,005  
Camp area: 588,987m<sup>2</sup>

## Demographics

52% male / 48% female

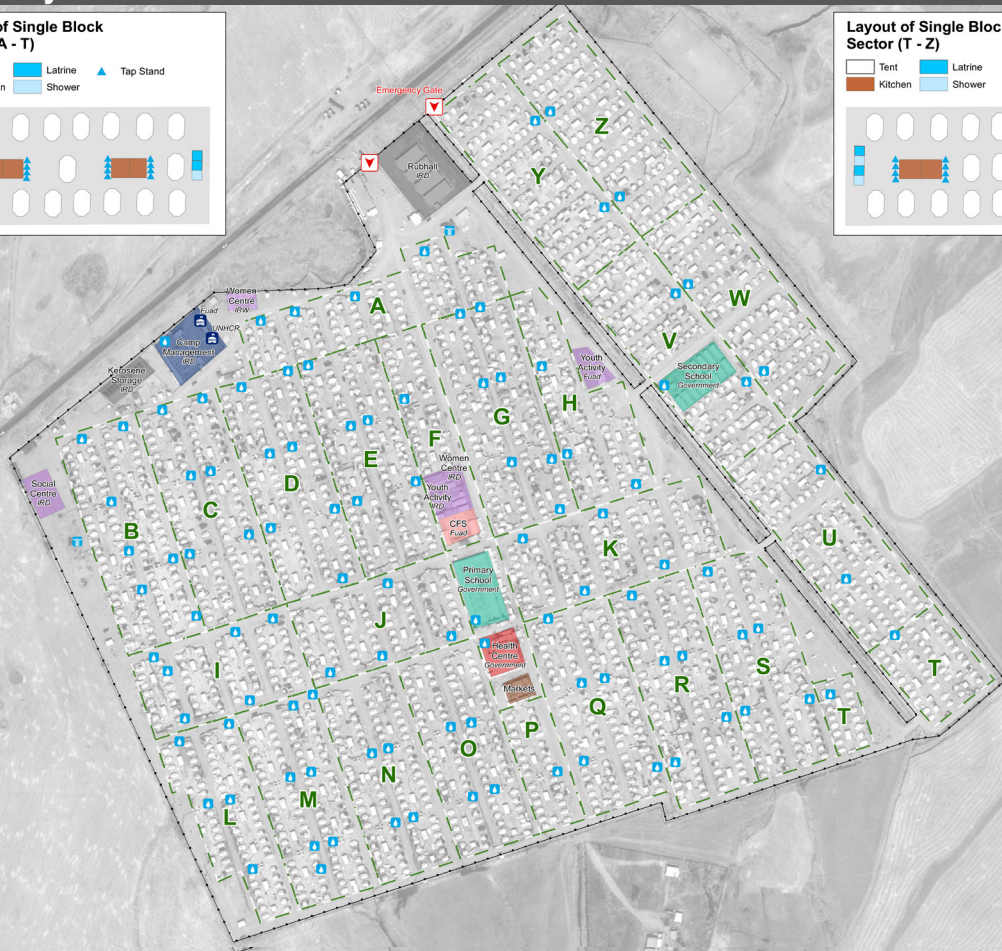
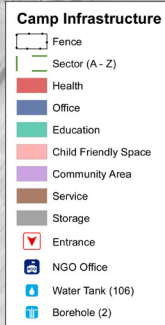
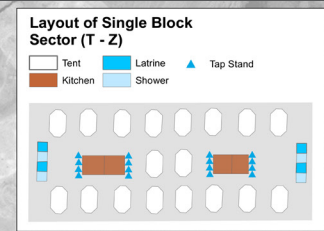
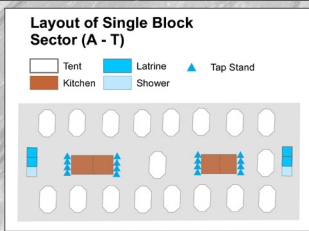


## Location Map



## IDP Camp Map - Laylan IDP

Lat. 35° 19' 46.44" N Long. 44° 31' 48.575" E



Scale 1: 900  
0 20 40 60 80 100 120 140 160 Meters

## Sectoral Minimum Standards

		Target	Previous Round	Current Round	Achievement
Education	% of children aged 6-11 attending formal school	100%	68%	77%	●
	% of children aged 12-17 attending formal school	100%	54%	60%	●
Food	% of households accessed Family Food Parcel or equivalent in the past month	100%	59%	86%	●
Health	Health services are available on-site or within walking distance	Yes	Yes	Yes	●
CCCM	Average open area per household	min. 30m <sup>2</sup>	184m <sup>2</sup>	52m <sup>2</sup>	●
Protection	% of IDPs registered on an individual basis (MODM/DDM)	100%	94%	79%	●
Shelter	Average covered area per person	min. 3.5m <sup>2</sup>	3.7m <sup>2</sup>	3.7m <sup>2</sup>	●
	Average number of individuals per shelter	max.5	5	6	●
WASH	# of persons per latrine	max. 20	35	22	●
	# of persons per shower	max. 20	76	22	●
	Frequency of solid waste disposal at least weekly	Min. weekly	no	Yes	●

Targets based on minimum standards agreed with the CCCM Cluster, Iraq. Findings based on household-level data, enumerator field observations, and camp management documentation  
● Minimum standard reached, ● More than 50% minimum standard reached, ● Less than 50% of minimum standard reached or not at all





# IDP Camp Profile - Laylan IDP

Kirkuk, Iraq  
January 2017

Management agency: UNHCR  
Manager/Focal point: Zerya Hasan Abdulkarim  
Phone number: 7706163544  
Email: Zabdalkarem@irdglobal.org  
Registration actor: UNHCR

## Shelter

### Top observed shelter type

Tent 100%

### Top reported needed shelter items

Tarpaulin 91%

Rope 74%

Sun shading net 62%

### Top reported needed basic items

Blanket 98%

Mattresses 85%

Cooker 64%

### Top reported needed winter item

Kerosene heater 77%

### Top reported needed summer item

Rechargeable fan 90%

## Food Security

### Reported access to food assistance

86% accessed food assistance in past month

63% received Public Distribution System (PDS) in past month

### Top three food consumption coping strategies

Cheaper 68%

Less meals 43%

Smaller meals 37%

## WASH

### Latrines and showers

100% reported public or communal latrines

96% public/communal latrines lockable from the inside

49% public/communal latrines with functioning lighting

### Top three reported methods of waste removal

Collected 100%

n/a n/a

n/a n/a

### Reported drinking water sources

0% connection inside the home to collective water storage

0% connection inside the home to private water storage

100% communal water tap outside the shelter

### Access to water

24% reported 24 consecutive hours without access to water in the past month

## Community Organisation

### IDP committees

100% reported awareness of IDP committee(s)

### Complaints mechanism

0% made a complaint about conditions or assistance

## Protection

### Family Separation

0% reported hosting unaccompanied or separated minors

6% reported that other family members intended to join them

### Vulnerable groups

Pregnant / lactating women 10%

Chronically ill individual(s) 8%

Disabled individual(s) 6%

Female headed households 15%

### Intentions

9% planned to move to a different location in next 3 months

### Restrictions

n/a reported being able to leave the camp temporarily (e.g. to go to the market, for livelihood opportunities)

## Livelihoods

16% reported as being economically inactive

### Top three income sources\*:

Humanitarian aid 43%

No livelihood 16%

Government aid 12%

\*Households were asked to select all income sources within household.

### Top three reported livelihood coping strategies

Support from family 9%

Selling assets 8%

Spent savings 4%