

NORTHWEST SYRIA MARKET MONITORING EXERCISE

Snapshot: 5-12 October 2020

INTRODUCTION

To inform humanitarian cash programming, REACH, in partnership with the Cash Working Group (CWG), conducts monthly Market Monitoring Exercises in northern Syria to assess the availability and prices of 36 basic commodities that are typically sold in markets and consumed by average Syrian households, including food and non-food items, water, fuel, and cellphone data.

Of these, 18 items comprise the Survival Minimum Expenditure Basket (SMEB; see below), which represents the minimum, culturally adjusted items required to support a 6-person household for a month.

Data collection took place between 5-12 October 2020 and was conducted by CARE-Shafak, GOAL, People In Need, REACH, Solidarités International, and Violet.

The accompanying data is disseminated monthly and is distributed through partners across the humanitarian community. See REACH Resource Centre for the [October 2020 data](#).

SURVIVAL MINIMUM EXPENDITURE BASKET (SMEB) CONTENTS

	Item	Quantity	
Food Items	Bread	37 kg	
	Bulgur	15 kg	
	Chicken	6 kg	
	Eggs	6 kg	
	Fresh vegetables	12 kg	
	Ghee/vegetable oil	7 kg/L	
	Red lentils	15 kg	
	Rice	19 kg	
	Salt	1 kg	
	Sugar	5 kg	
	Tomato paste	6 kg	
	Hygiene items	Bathing soap	12 bars
		Laundry/dish soap	3 kg
Sanitary pads		4 packs of 10	
Toothpaste		200 g	
Fuel	Cooking fuel*	25 L	
Water	Water trucking	4500 L	
Telecom	Smartphone data	1 GB	
Other	Float (other costs)**	7.5% total value	

* Kerosene in northern Syria

** Float only applied to observations where prices of all SMEB contents could be collected

KEY DEVELOPMENTS

Coverage and data collection dates; monitoring of alternative fuel items began

In October 2020, REACH and partners covered 33 sub-districts and 2,441 individual shops in northwest Syria (NWS) for the Market Monitoring Exercise. REACH and partners also started to monitor various alternative fuel items in anticipation of the upcoming winter season. However, according to REACH field teams, during October data collection most vendors were not selling winter items as the winter season had not arrived yet. In light of the fluctuation of the Syrian Pound (SYP)'s value and resulting market disruption, prices in the Market Monitoring dataset and output should be seen as representative only of the markets and dates where and when information was collected (5-12 October).

Highest northwest SMEB SYP cost recorded; SMEB USD cost slightly decreased

In October, the value of the regional SMEB reached 233,932 SYP, a 3% increase compared to September and 92% increase since April 2020, setting the highest recorded price in the Market Monitoring Exercise in NWS since September 2019. The SMEB in United States Dollar (USD) decreased from 107 to 104 USD in October alongside a slight depreciation of the SYP against the USD (see next paragraph).

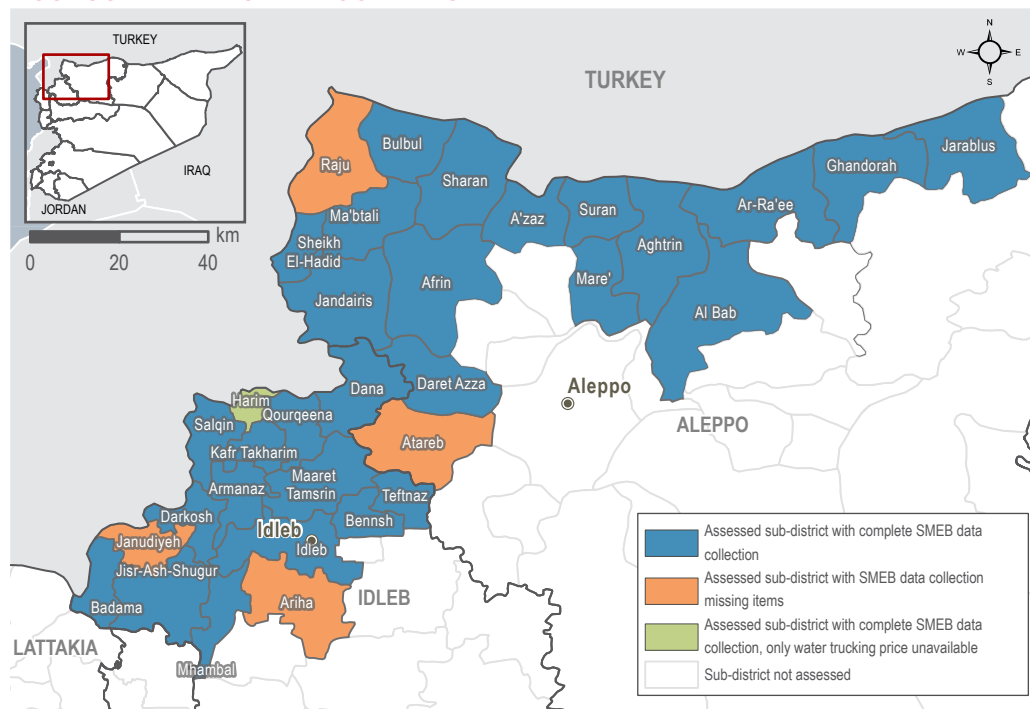
Slight depreciation of the SYP against the USD

In October, the informal USD/SYP regional median exchange rate increased by 6% since September and reached a regional median of 2,260 USD/SYP. The six-month change, an 86% increase since April, demonstrates that the USD/SYP informal exchange rate remained extremely high. The highest exchange rate was recorded at 2,460 SYP to 1 USD in Azmarin and Kelly community in Idleb governorate.

Fuel prices slightly increased; manually refined petrol and kerosene remained widely unavailable

In October, the median price of transport fuels slightly increased since September at the regional level, recording 1,277 SYP per litre. The price of high quality petrol and diesel both increased by 8% over the past month. Meanwhile, the price of manually refined kerosene (used for cooking and heating) decreased by 4% since September. The median price of manually refined petrol significantly increased by 21% whilst manually refined diesel increased slightly by 7% since September. Moreover, surveyed vendors selling fuel and gas reported a continued scarcity of manually refined kerosene and petrol, with 56% reporting that manually refined kerosene was unavailable in their market, and 78% reporting the same for manually refined petrol. According to REACH field teams, the scarcity of manually refined products in NWS was offset by high quality fuel imports and the reliance on liquefied petroleum gas.

ASSESSED AREAS AND COVERAGE

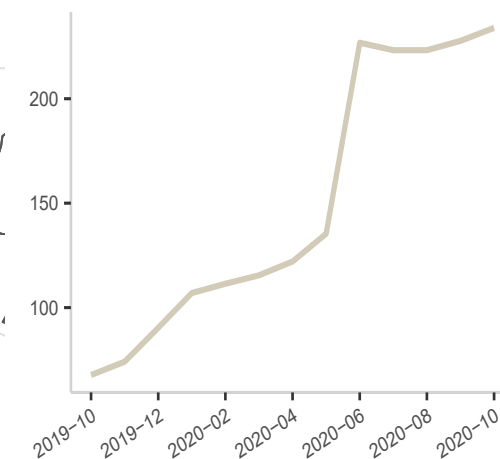


MEDIAN SMEB COST IN SYP (USD), BY REGION

233,932 SYP (104 USD) | NORTHWEST SYRIA - IDLEB, WESTERN & NORTHERN ALEPPO GOVERNORATES

MEDIAN SMEB COSTS, BY MONTH

Thousand Syrian Pounds



KEY DEVELOPMENTS

233,932 SYP (104 USD) NORTHWEST SYRIA - IDLEB, WESTERN & NORTHERN ALEPPO GOVERNORATES

Food item prices slightly increased

In October, the cost of the regional SMEB food component reached 170,475 SYP, an 8% increase since September and a 100% increase since April 2020. Specifically, the cost of the SMEB vegetable/fresh food component increased by 15% since September. The end of the local agricultural season, the stocking practice in preparation for the winter as well as the rising transport fuel prices were reported by field teams as the main factors contributing to the inflation of vegetable prices compared to September. Meanwhile, the cost of the SMEB food component in USD increased slightly from 74 USD to 75 USD, a small increase of 1%. Field teams reported that vendors kept their prices high to avoid potential losses due to the ongoing fluctuation of the informal USD/SYP exchange rate. In addition, among vendors who reported supply challenges during the Market Monitoring Exercise, 97% reported price inflation as their main supply challenge (see page 10 for Market Functionality findings). Nonetheless, the median prices of bulk food only recorded a small increase since September. For example, the prices of bulgur and sugar increased only slightly by 1% and 4% since September, respectively. This could be explained by the stable supply of bulk food in October, the availability of these items from relief distribution, and the increased difficulty to sell the locally produced bulk food to the Government of Syria (GoS)-controlled areas due to road

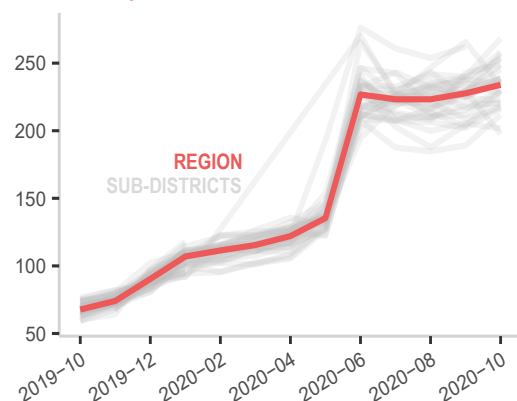
closure, as reported by REACH field teams. Prices of flour and bread also remained relatively stable. Prices of flour remained at a regional median of 800 SYP since September, and a bag of 8 pieces of bread increased slightly by 2%, reaching a median of 600 SYP. Field teams reported that the increase of transport fuel prices and the depreciation of the USD / Turkish Lira (TRY) exchange rate had contributed to the price stability. Finally, other SMEB basic food items, such as eggs (6% increase) and tomato paste (3% increase), have seen their prices continue to increase since September.

Hygiene items prices slightly decreased in general; water trucking price increased

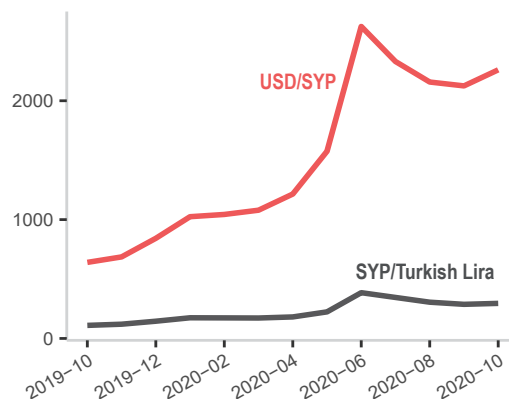
This month, the SMEB hygiene component decreased slightly by 1% at the regional level, reaching a median of 12,993 SYP. More specifically, prices of bathing soap decreased by 20% since September and laundry soap by 11%. These price decreases could be attributed to increased availability of these items from relief distribution to prevent the spread of COVID-19, according to REACH field teams. Meanwhile, the value of the SMEB water trucking component increased by 9% across NWS, reaching a median of 9,878 SYP. According to REACH field teams, the increase in water trucking prices could be attributed to the increase in transport fuel prices, which were driven up by the depreciation of the USD/TRY exchange rate.

MEDIAN SMEB COSTS, BY MONTH

Thousand Syrian Pounds



EXCHANGE RATES, BY MONTH & CURRENCY



MEDIAN SMEB COSTS & CHANGES*

Syrian Pounds

Sub-district	SMEB	One month change	Six month change
Northwest Syria	233,932	3%	92%
Afrin	201,666	-2%	62%
Aghtrin	216,438	7%	105%
Al Bab	217,069	4%	91%
Ariha	NA	NA	NA
Armanaz	254,079	9%	97%
Ar-Ra'ee	218,556	7%	101%
Atareb	NA	NA	NA
A'zaz	222,812	0%	77%
Badama	268,335	12%	113%
Bennsh	238,852	6%	91%
Bulbul	256,997	13%	122%
Dana	253,289	6%	117%
Daret Azza	229,601	9%	78%
Darkosh	238,784	4%	76%
Ghandorah	220,377	1%	107%
Harim**	234,081	6%	112%

Sub-district	SMEB	One month change	Six month change
Idleb	238,784	4%	116%
Jandairis	235,468	4%	96%
Janudiyeh	NA	NA	NA
Jarablus	231,344	7%	98%
Jisr-Ash-Shugur	227,067	-4%	78%
Kafr Takharim	249,272	3%	100%
Maaret Tamsrin	258,180	9%	113%
Ma'bтали	211,662	12%	68%
Mare'	248,513	8%	110%
Mhambal	220,770	2%	84%
Qourqeena	245,505	8%	92%
Raju	NA	NA	NA
Salqin	238,569	6%	80%
Sharan	234,527	-2%	105%
Sheikh El-Hadid	197,650	-14%	55%
Suran	229,384	13%	85%
Teftnaz	233,337	-12%	NA

* For price and change calculations, only the communities within a sub-district with consistent coverage across months are included.

** SMEB calculated without water trucking component.

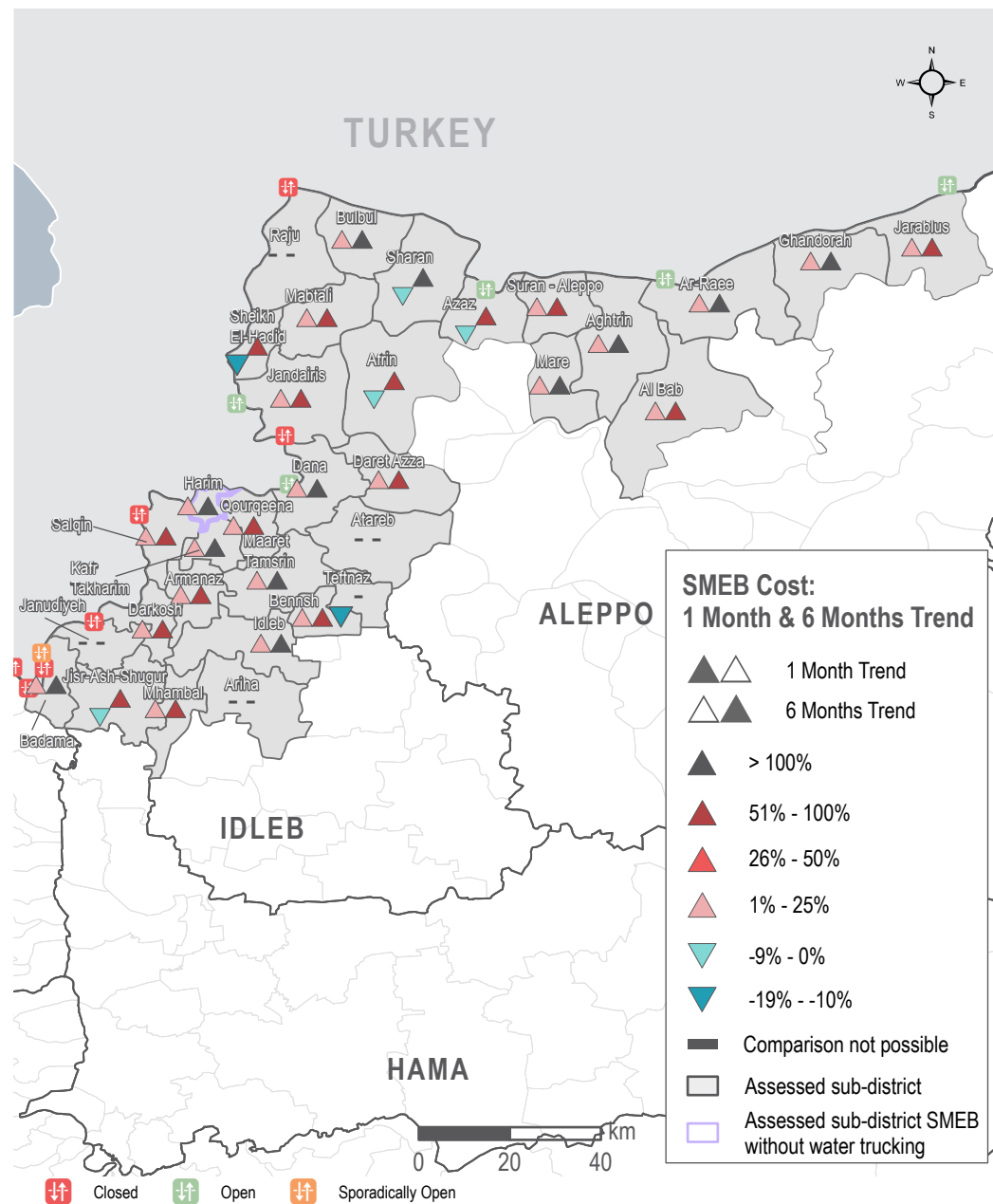
Note: Lack of data for a SMEB item does not necessarily imply a shortage.

SUB-DISTRICTS WITH INCOMPLETE SMEB IN OCTOBER

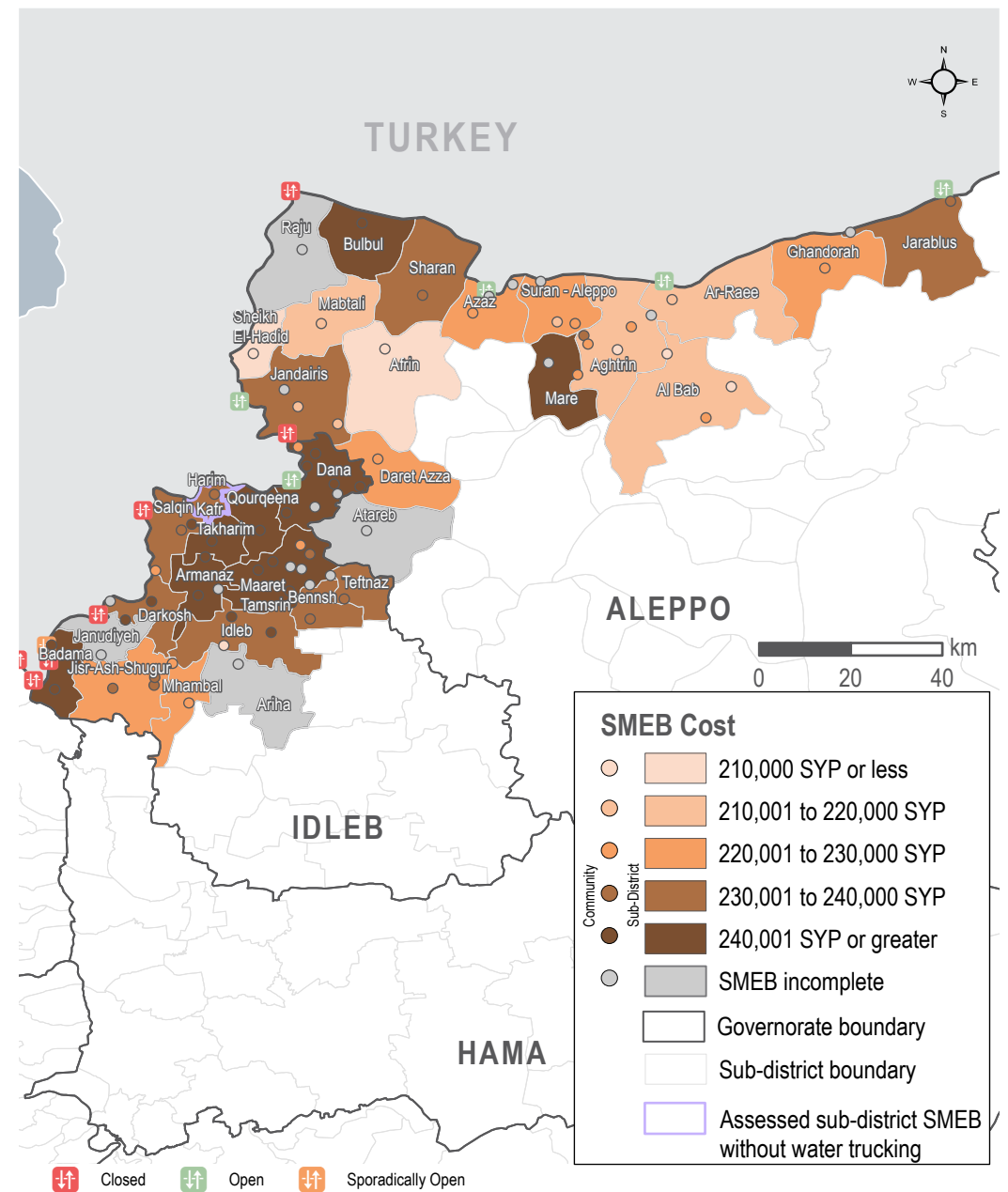
- Ariha** Bread, manually refined kerosene
- Atareb** Toothpaste, LP gas
- Janudiyeh** Toothpaste, manually refined kerosene
- Raju** Bread, chicken, manually refined kerosene

Note: Lack of data for a SMEB item does not necessarily imply a shortage.

SMEB COST: ONE MONTH & SIX MONTHS TREND



SMEB COST RANGES (SYP), BY SUB-DISTRICTS & COMMUNITIES



NORTHWEST SYRIA - SMEB FOOD ITEMS

Idleb, Western & Northern Aleppo governorates

MEDIAN SMEB COST: FOOD ITEMS

See Page 1, Syrian Pounds

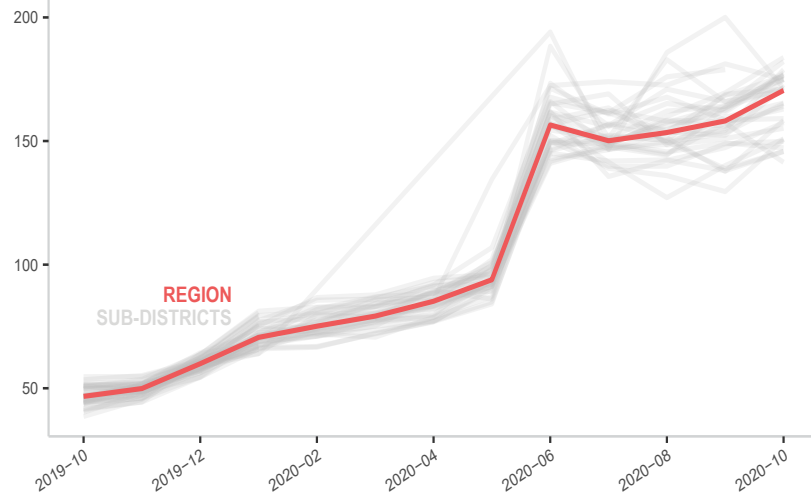
Sub-district	SMEB Food	One month change	Six month change	Sub-district	SMEB Food	One month change	Six month change
Northwest Syria	170,475	8%	100%	Idleb	170,475	3%	115%
Afrin	147,254	-1%	64%	Jandairis	162,950	3%	96%
Aghtrin	145,800	6%	90%	Janudiyeh	183,775	8%	107%
Al Bab	145,788	5%	77%	Jarablus	157,434	7%	98%
Ariha	NA	NA	NA	Jisr-Ash-Shugur	165,350	4%	96%
Armanaz	177,490	9%	95%	Kafr Takharim	176,213	5%	92%
Ar-Ra'ee	150,825	8%	92%	Maaret Tamsrin	176,730	9%	111%
Atareb	174,950**	-3%	103%	Ma'bтали	150,650	16%	70%
A'zaz	155,175	3%	76%	Mare'	176,750	8%	99%
Badama	182,155	11%	110%	Mhambal	159,075	0%	87%
Bennsh	174,950	5%	104%	Qourqeena	174,877	13%	101%
Bulbul	171,770	13%	122%	Raju	NA	NA	NA
Dana	175,028	7%	122%	Salqin	164,100	5%	85%
Daret Azza	165,163	8%	75%	Sharan	171,550*	5%	106%
Darkosh	170,975	1%	87%	Sheikh El-Hadid	141,400	-10%	52%
Ghandorah	149,825	1%	95%	Suran	158,350	15%	94%
Harim	178,850	16%	132%	Teftnaz	171,325	-14%	NA

* For these sub-districts, more than 50% of the SMEB food items median prices rely on less than 3 observations.

** For these sub-districts, all of the SMEB food items median prices rely on less than 3 observations.

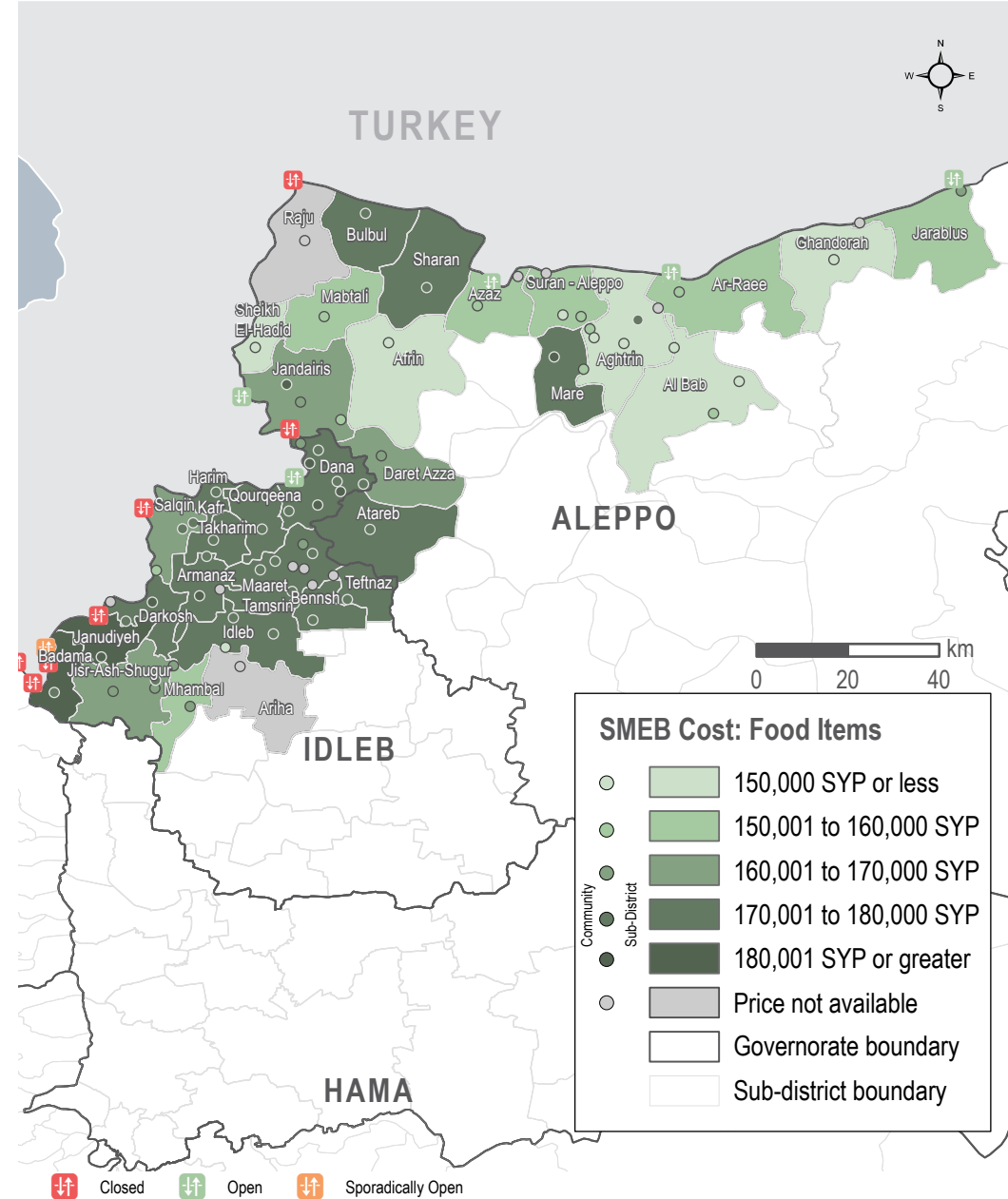
MEDIAN SMEB COST: FOOD ITEMS, BY MONTH

Thousand Syrian Pounds



SMEB FOOD ITEMS' COST

Sub-districts & Communities, Syrian Pounds



NORTHWEST SYRIA - SMEB COOKING FUEL

Idleb, Western & Northern Aleppo governorates

MEDIAN SMEB COOKING FUEL PRICE

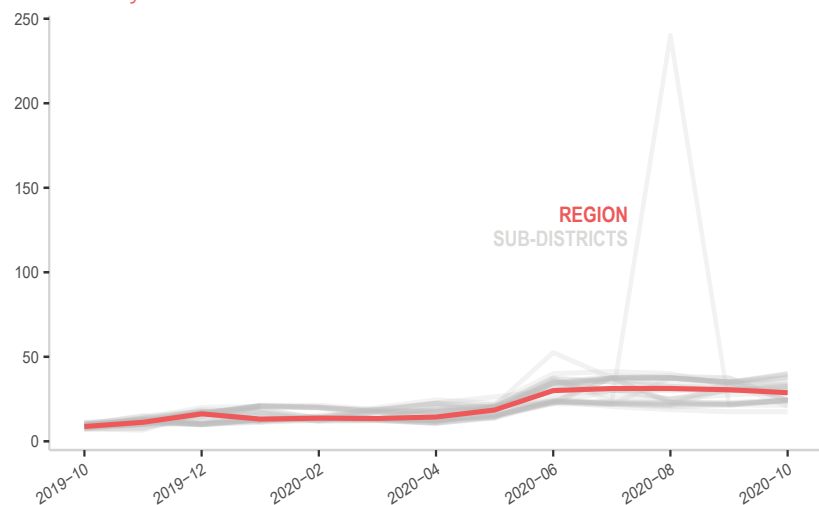
Kerosene 25L, Syrian Pounds

Sub-district	SMEB Cooking Fuel	One month change	Six month change	Sub-district	SMEB Cooking Fuel	One month change	Six month change
Northwest Syria	28,750	-6%	100%	Idleb	24,375	11%	99%
Afrin	17,500*	0%	27%	Jandairis	35,000	0%	75%
Aghtrin	33,938	13%	219%	Janudiyeh	24,375*	8%	99%
Al Bab	30,250	-1%	183%	Jarablus	32,500	8%	86%
Ariha	24,500	15%	96%	Jisr-Ash-Shugur	24,375	-30%	8%
Armanaz	38,125	8%	114%	Kafr Takharim	33,500	-4%	175%
Ar-Ra'ee	28,750	5%	164%	Maaret Tamsrin	39,375	13%	122%
Atareb	32,500*	0%	73%	Ma'btali	31,250	0%	178%
A'zaz	28,125	-12%	88%	Mare'	30,000	0%	179%
Badama	40,000	16%	121%	Mhambal	24,375	7%	99%
Bennsh	24,063	13%	20%	Qourqeena	24,000	-36%	13%
Bulbul	40,000	14%	142%	Raju	21,250*	-2%	75%
Dana	37,500	7%	116%	Salqin	37,500	13%	54%
Daret Azza	24,000	10%	98%	Sharan	24,375	-30%	101%
Darkosh	24,375	12%	8%	Sheikh El-Hadid	20,875	-39%	70%
Ghandorah	31,250	4%	178%	Suran	32,500	7%	44%
Harim	24,375	-35%	39%	Teftnaz	23,750	7%	NA

* For these sub-districts, the median prices of cooking fuels rely on less than 3 observations.

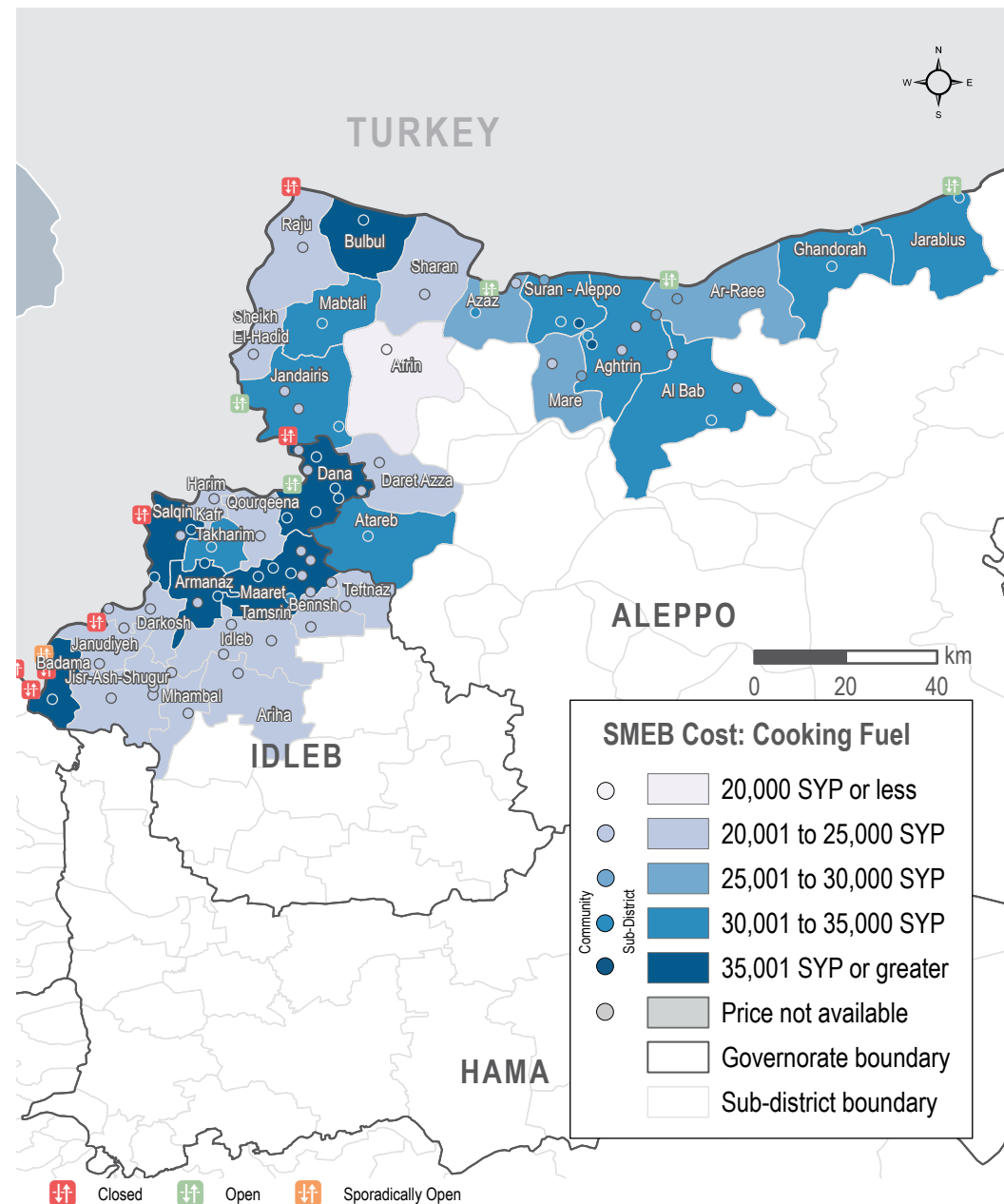
MEDIAN SMEB COOKING FUEL COSTS, BY MONTH

Thousand Syrian Pounds



SMEB COOKING FUEL COST

Sub-districts & Communities, Syrian Pounds



MEDIAN SMEB WATER TRUCKING PRICE

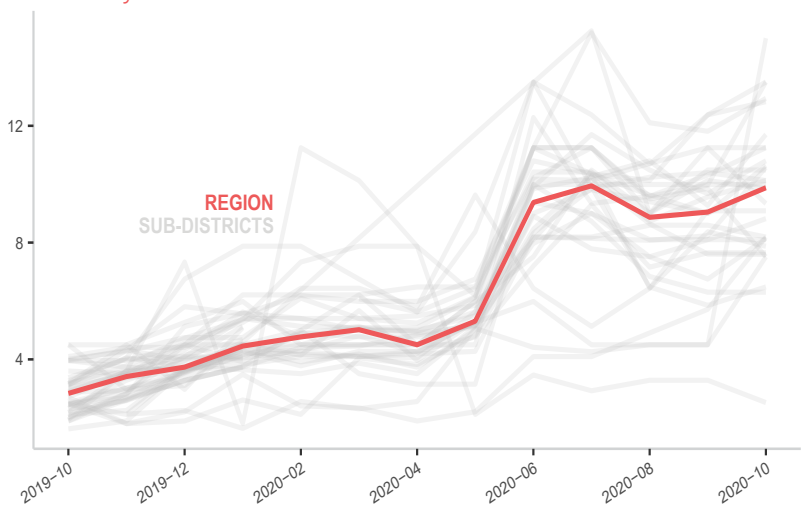
4,500L, Syrian Pounds

Sub-district	SMEB Water Truck	One month change	Six month change	Sub-district	SMEB Water Truck	One month change	Six month change
Northwest Syria	9,878	9%	120%	Idleb	13,500	9%	140%
Afrin	10,643	18%	78%	Jandairis	8,190	43%	333%
Aghtrin	11,250	9%	127%	Janudiyeh	7,515	67%	67%
Al Bab	12,938	10%	100%	Jarablus	12,825	4%	152%
Ariha	9,090	0%	57%	Jisr-Ash-Shugur	9,900	10%	108%
Armanaz	7,650	0%	79%	Kafr Takharim	7,594	0%	80%
Ar-Ra'ee	9,990	0%	100%	Maaret Tamsrin	10,125	-3%	171%
Atareb	8,100*	0%	100%	Ma'btali	2,520	-23%	-68%
A'zaz	9,335	-17%	78%	Mare'	10,575	28%	176%
Badama	10,800	12%	173%	Mhambal	10,125	6%	29%
Bennsh	6,300	0%	100%	Qourqeena	15,000	233%	487%
Bulbul	11,700	26%	113%	Raju	7,515*	-24%	34%
Dana	8,820	9%	80%	Salqin	7,875	-6%	124%
Daret Azza	8,145	21%	68%	Sharan	8,190	-5%	96%
Darkosh	13,500	35%	200%	Sheikh El-Hadid	10,485	0%	133%
Ghandorah	11,250	0%	163%	Suran	9,855	-3%	119%
Harim	NA	NA	NA	Teftnaz	6,480	11%	NA

* For these sub-districts, the median prices of water trucking rely on less than 3 observations.

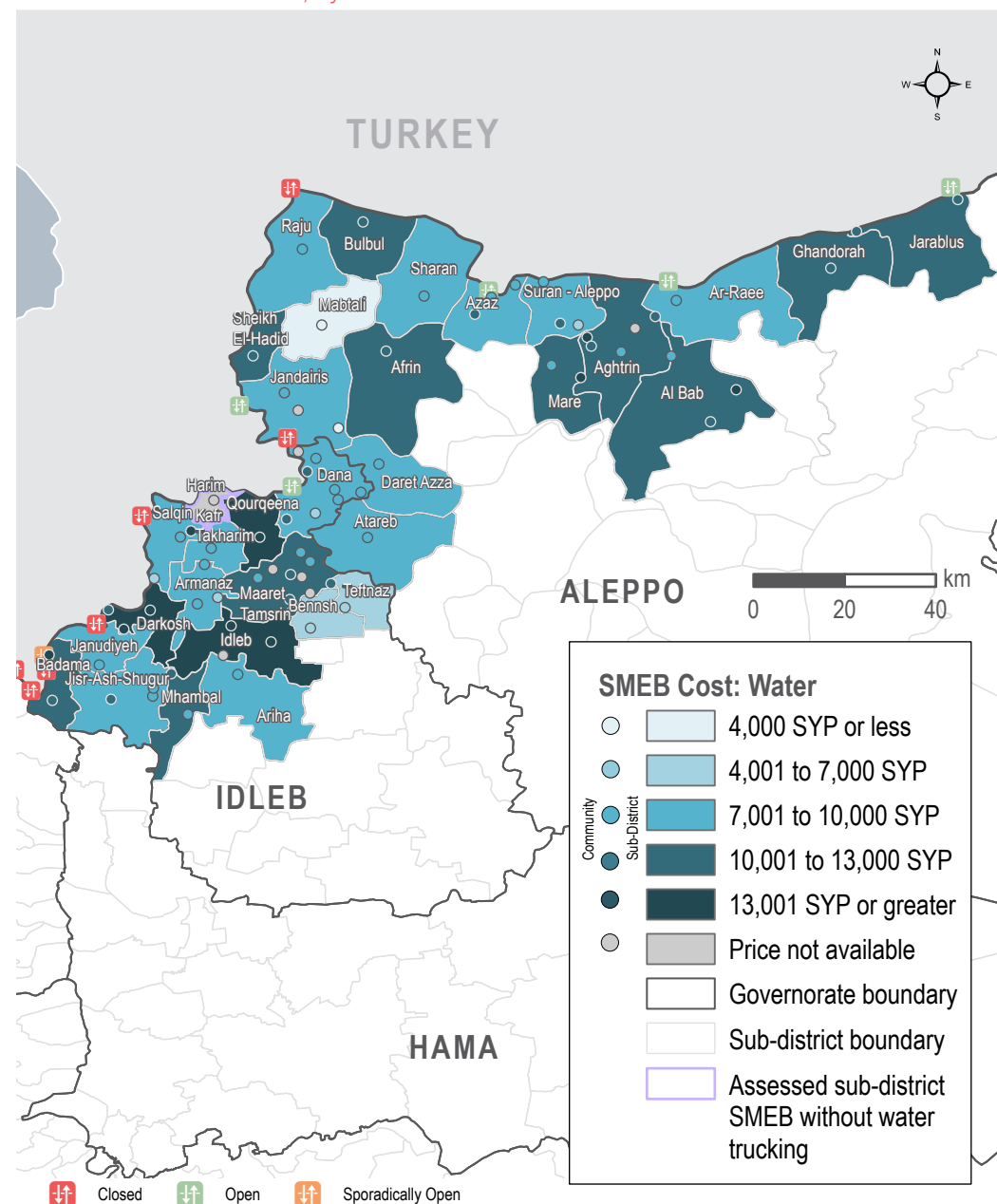
MEDIAN SMEB WATER TRUCKING COSTS, BY MONTH

Thousand Syrian Pounds



SMEB WATER TRUCKING COST

Sub-districts & Communities, Syrian Pounds



NORTHWEST SYRIA - SMEB CELLPHONE DATA

Idleb, Western & Northern Aleppo governorates

MEDIAN SMEB CELLPHONE DATA PRICE

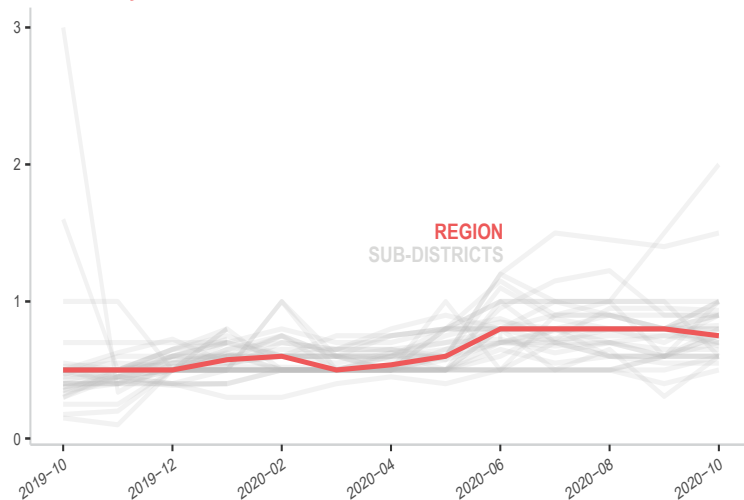
1GB data, Syrian Pounds

Sub-district	SMEB Data (1GB)	One month change	Six month change	Sub-district	SMEB Data (1GB)	One month change	Six month change
Northwest Syria	750	-6%	40%	Idleb	600	0%	20%
Afrin	1,500	7%	131%	Jandairis	550	0%	10%
Aghtrin	800	0%	33%	Janudiyeh	800	33%	60%
Al Bab	700	17%	17%	Jarablus	800	0%	60%
Ariha	750	25%	25%	Jisr-Ash-Shugur	900	13%	20%
Armanaz	825	3%	65%	Kafr Takharim	900	0%	80%
Ar-Ra'ee	750	25%	50%	Maaret Tamsrin	750	0%	30%
Atareb	600*	-40%	20%	Ma'btali	2,000	33%	186%
A'zaz	935	-2%	25%	Mare'	900	29%	80%
Badama	700	-7%	8%	Mhambal	600	95%	33%
Bennsh	600	20%	20%	Qourqeena	650	0%	4%
Bulbul	675	-16%	4%	Raju	1,000*	25%	100%
Dana	750	-6%	25%	Salqin	700	-13%	17%
Daret Azza	900	0%	80%	Sharan	1,000	25%	33%
Darkosh	600	0%	20%	Sheikh El-Hadid	600	0%	20%
Ghandorah	1,000	0%	100%	Suran	1,000	67%	60%
Harim	900	13%	13%	Teftnaz	500	25%	NA

* For these sub-districts, the median prices of cellphone data rely on less than 3 observations.

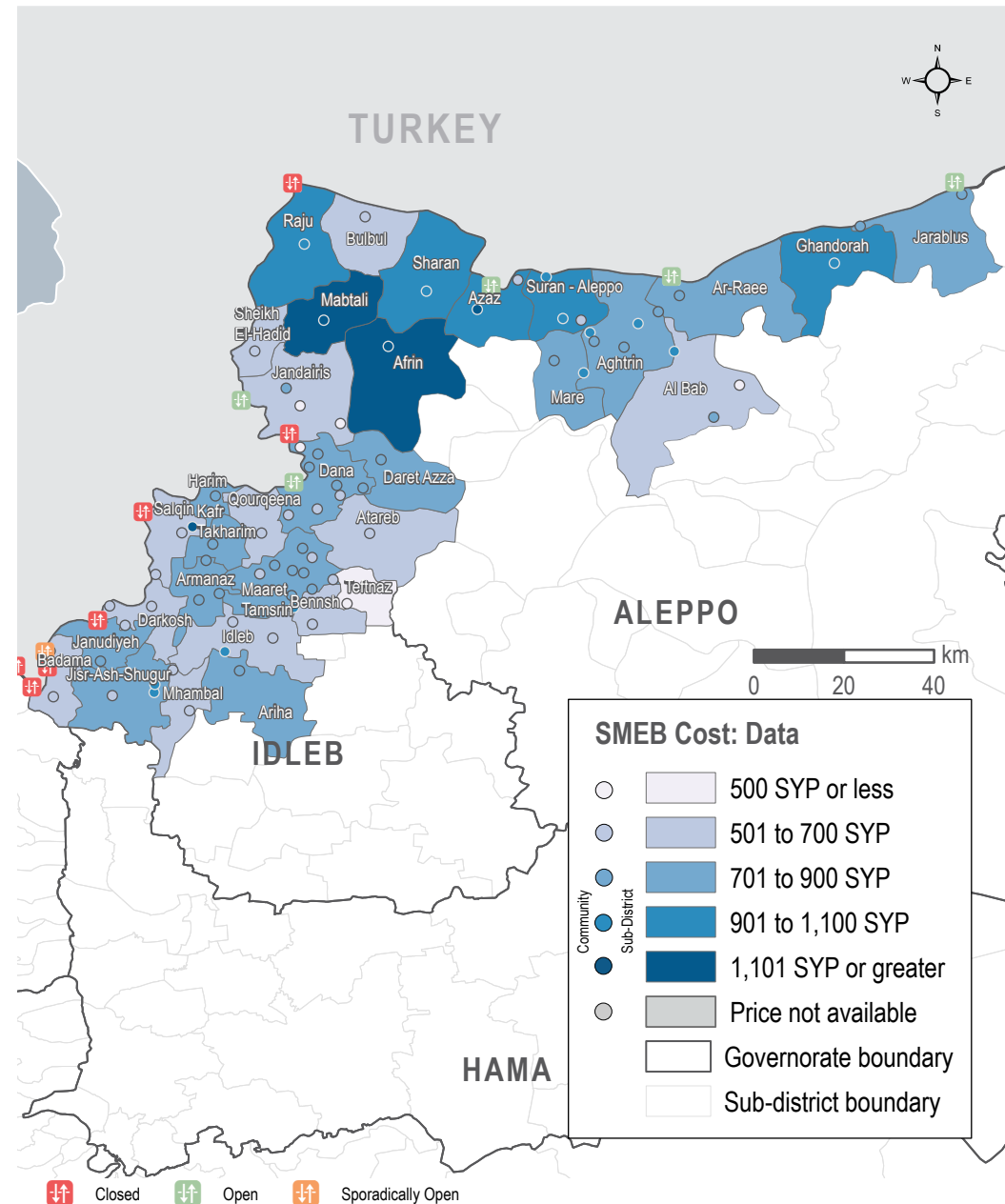
MEDIAN SMEB CELLPHONE DATA COST, BY MONTH

Thousand Syrian Pounds



SMEB CELLPHONE DATA COST

Sub-districts & Communities, Syrian Pounds



SMEB Cost: Data

- 500 SYP or less
- 501 to 700 SYP
- 701 to 900 SYP
- 901 to 1,100 SYP
- 1,101 SYP or greater
- Price not available
- Governorate boundary
- Sub-district boundary

Community: ● Sub-District

↑ Closed ↑ Open ↑ Sporadically Open

MEDIAN TRANSPORT FUEL PRICE

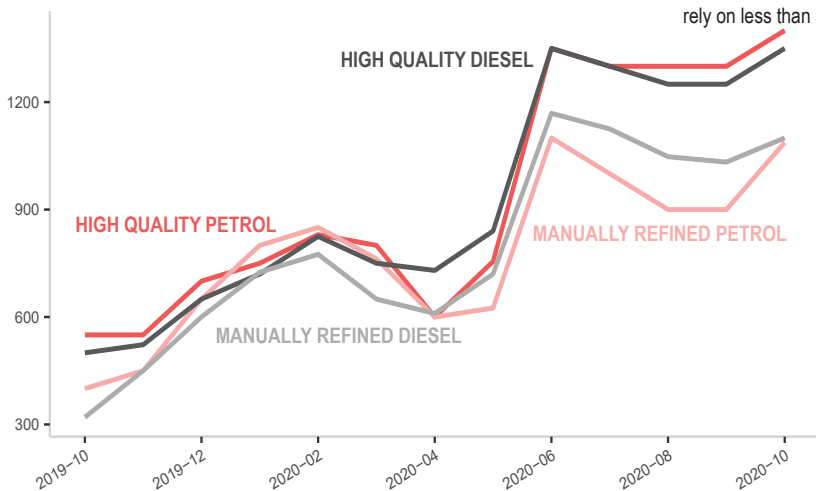
Diesel and Petrol, 1L (High Quality and Manually Refined), Syrian Pounds

Sub-district	Transport Fuel	One month change	Six month change	Sub-district	Transport Fuel	One month change	Six month change
Northwest Syria	1,277	7%	103%	Idleb	1,383	13%	127%
Afrin	1,117**	10%	NA	Jandairis	1,300	11%	100%
Aghtrin	1,173	13%	91%	Janudiyeh	1,390	3%	NA
Al Bab	1,158	10%	93%	Jarablus	1,267	15%	95%
Ariha	1,370	5%	103%	Jisr-Ash-Shugur	1,322	11%	109%
Armanaz	1,325	6%	105%	Kafr Takharim	1,313	5%	104%
Ar-Ra'ee	1,163	9%	NA	Maaret Tamsrin	1,298	7%	92%
Atareb	1,250**	4%	83%	Ma'btali	1,250	0%	NA
A'zaz	1,175	2%	94%	Mare'	1,200	6%	100%
Badama	1,321	9%	111%	Mhambal	1,304	3%	NA
Bennsh	1,342	6%	115%	Qourqeena	1,325	6%	106%
Bulbul	1,135*	10%	83%	Raju	1,250**	0%	105%
Dana	1,358	8%	128%	Salqin	1,325	10%	100%
Daret Azza	1,237	6%	NA	Sharan	1,277	8%	113%
Darkosh	1,260	8%	97%	Sheikh El-Hadid	1,173	8%	96%
Ghandorah	1,213	14%	94%	Suran	1,194	13%	89%
Harim	1,287	-1%	72%	Teftnaz	1,325	11%	NA

* For these sub-districts, more than 50% of the median prices for the items composing the transport fuel indicator rely on less than 3 observations.
 ** For these sub-districts, all of the median prices for the items composing the transport fuel indicator rely on less than 3 observations.

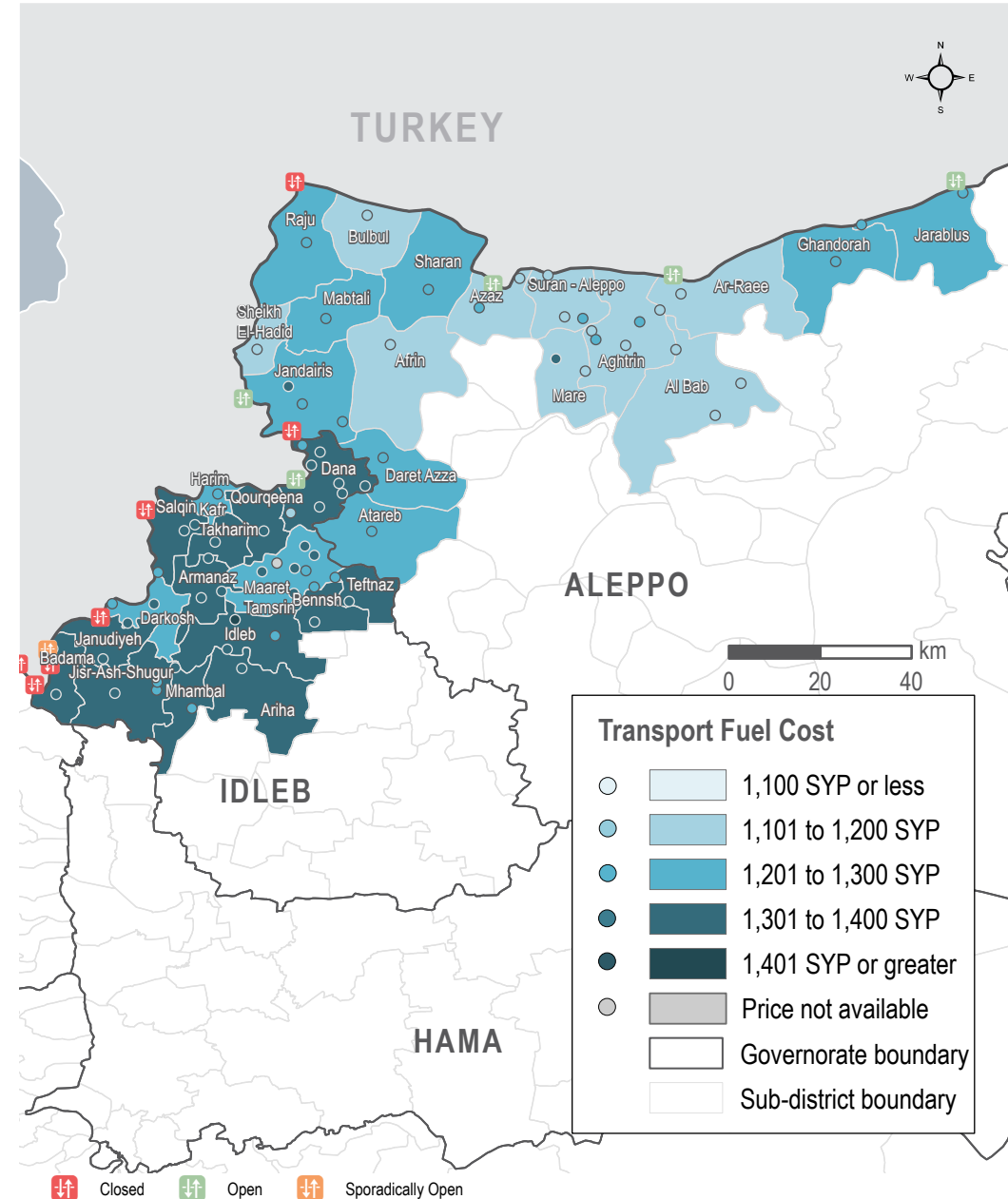
MEDIAN TRANSPORT FUEL COSTS, BY MONTH & TYPE

Syrian Pounds



TRANSPORT FUEL COST

Sub-districts & Communities, Syrian Pounds



NORTHWEST SYRIA - SMEB HYGIENE ITEMS

Idleb, Western & Northern Aleppo governorates

MEDIAN SMEB HYGIENE ITEMS' PRICE

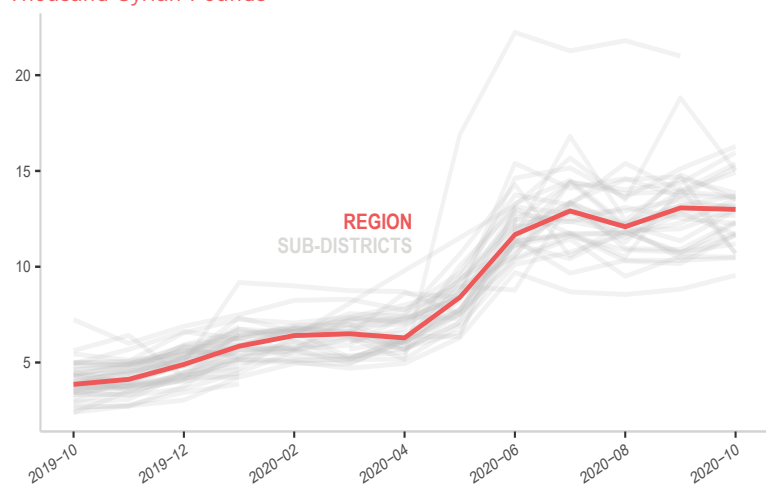
12 bars of soap, 4 packs of 10 sanitary pads, 3kg of laundry/dish soap, 200g of toothpaste, Syrian Pounds

Sub-district	SMEB Hygiene Items	One month change	Six month change	Sub-district	SMEB Hygiene Items	One month change	Six month change
Northwest Syria	12,993	-1%	107%	Idleb	13,175	2%	155%
Afrin	10,700	-24%	86%	Jandairis	12,350	13%	104%
Aghtrin	9,550	8%	93%	Janudiyeh	NA	NA	NA
Al Bab	12,250	-2%	105%	Jarabulus	11,645	15%	90%
Ariha	15,204	11%	176%	Jisr-Ash-Shugur	10,700	-27%	78%
Armanaz	12,263	15%	88%	Kafr Takharim	13,675	-2%	94%
Ar-Ra'ee	12,993	8%	109%	Maaret Tamsrin	13,188	0%	89%
Atareb	NA	NA	NA	Ma'bтали	10,475	1%	21%
A'zaz	13,697	4%	83%	Mare'	12,950	14%	111%
Badama	15,959	11%	100%	Mhambal	11,192	4%	98%
Bennsh	16,275	8%	127%	Qourqeena	13,850	-5%	87%
Bulbul	14,922	7%	92%	Raju	13,526*	10%	100%
Dana	13,520	-9%	86%	Salqin	11,750	9%	93%
Daret Azza	15,375	10%	99%	Sharan	13,050	-3%	105%
Darkosh	12,675	-1%	74%	Sheikh El-Hadid	10,500	0%	21%
Ghandorah	11,677	-9%	90%	Suran	11,675	12%	106%
Harim	13,625	-1%	84%	Teftnaz	15,003	-20%	NA

* For these sub-districts, all hygiene items median prices rely on less than 3 observations.

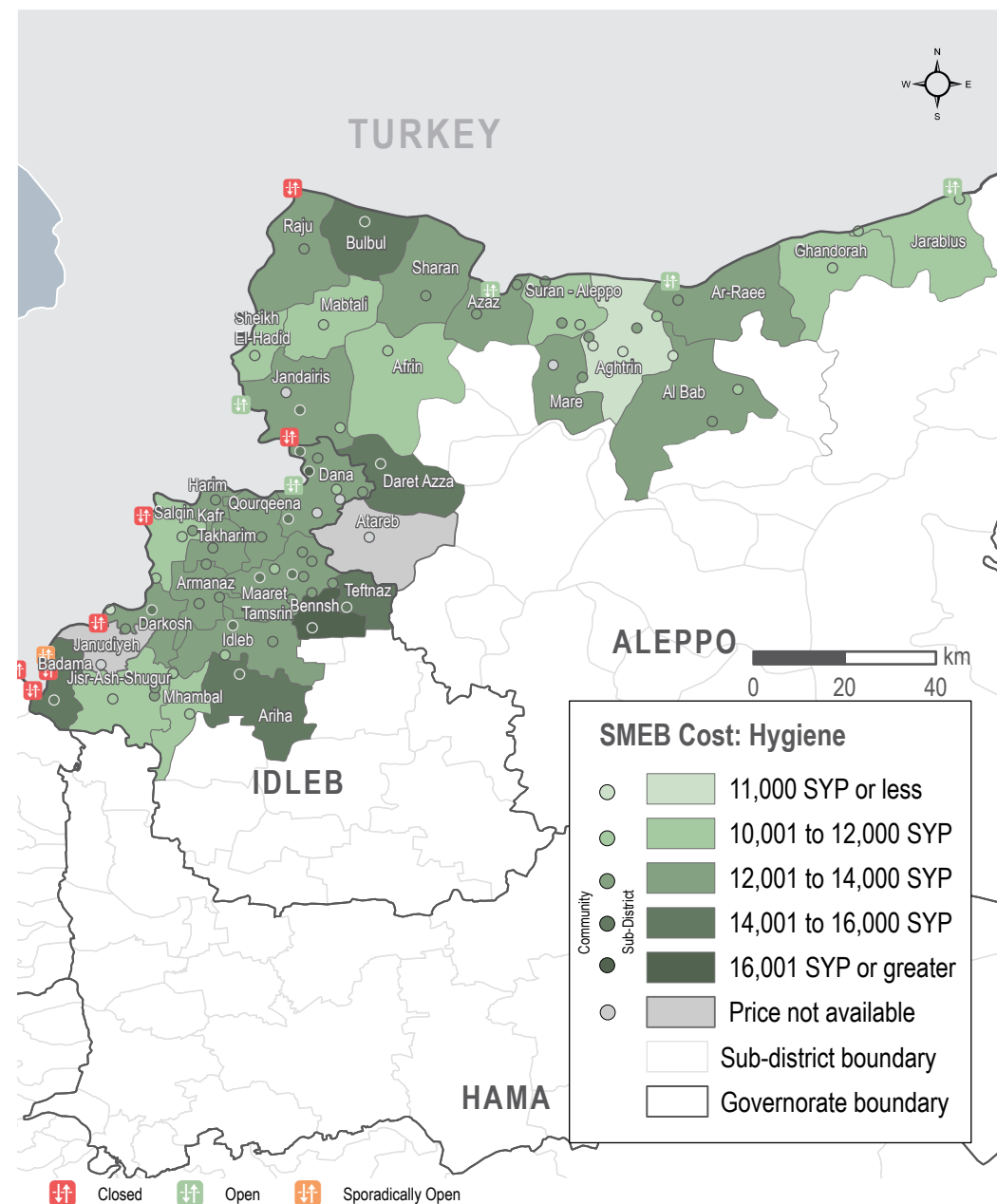
MEDIAN SMEB HYGIENE ITEMS' COSTS, BY MONTH

Thousand Syrian Pounds



SMEB HYGIENE ITEMS' COST

Sub-districts & Communities, Syrian Pounds



MEDIAN WINTERISATION ITEMS' PRICE

Per 1 piece/pair, Syrian Pounds

Sub-district	Jerrycan	Plastic sheet	Winter carpet	Kerosene/ diesel heater	Winter blanket	Mattress	Men's winter jacket	Women's winter jacket	Children's winter jacket	Men's winter boots	Women's winter boots	Children's winter boots
Northwest Syria	2,875	10,000	60,000	28,000	6,000	8,500	15,400	17,000	7,500	8,000	8,350	6,000
Afrin	4,000	14,500	45,000	35,000	14,500	5,000	NA	NA	NA	NA	NA	NA
Aghtrin	1,750	8,000	70,000*	60,000*	7,000	8,000	NA	NA	NA	NA	NA	NA
Al Bab	1,600	8,000	100,000	40,000*	10,000	12,000	NA	NA	NA	NA	NA	NA
Ariha	NA	NA	NA	NA	NA	NA	NA	NA	NA	NA	NA	NA
Armanaz	3,200	9,200	67,000	26,750	4,200	8,000	NA	NA	NA	NA	NA	NA
Ar-Ra'ee	2,500	16,000	55,000	30,000	25,000	8,000	NA	NA	NA	NA	NA	NA
Atareb	2,500*	11,000*	45,000*	12,000*	4,000*	7,500*	8,500*	8,500*	6,000*	5,000*	5,000*	4,000*
A'zaz	2,900	9,000	85,000	NA	8,000	9,000	NA	NA	NA	8,000	8,000	5,000
Badama	3,200	10,000	70,000	28,000	5,000	9,000	NA	NA	NA	NA	NA	NA
Bennsh	1,750	9,750	17,500	26,000	3,000	8,500	16,000	19,700	9,000	9,500	8,700	8,200
Bulbul	3,100*	8,600*	68,000*	27,000*	3,400*	8,800*	NA	NA	NA	NA	NA	NA
Dana	3,200	10,150	71,000	28,000	4,000	9,400	NA	NA	NA	NA	NA	NA
Daret Azza	1,900	8,000	90,000	NA	NA	14,250*	NA	NA	NA	NA	NA	NA
Darkosh	3,500	8,000	55,000	32,500*	8,500	8,500	NA	NA	NA	NA	NA	NA
Ghandorah	2,750*	11,500*	NA	NA	3,750*	8,500*	NA	NA	NA	NA	NA	NA
Harim	3,000	12,000	70,000	30,000	3,000	8,000	NA	NA	NA	NA	NA	NA
Idleb	3,150	7,550	42,000	24,500	8,000	7,000	NA	NA	NA	NA	NA	NA
Jandairis	3,000	12,000	60,000	28,000	3,500	8,500	NA	NA	NA	NA	NA	NA
Janudiyeh	2,900*	9,250*	70,000*	26,500*	8,500*	8,500*	NA	NA	NA	NA	NA	NA
Jarablus	2,800	13,000	79,000	49,700	25,000	9,500	NA	NA	NA	NA	NA	NA
Jisr-Ash-Shugur	3,500	10,000	38,000	30,000	8,000	9,000	NA	NA	NA	NA	NA	NA
Kafr Takharim	2,400	7,350	25,000	25,500	13,250	11,500	NA	NA	NA	9,750*	9,750*	8,300*
Maaret Tamsrin	3,000	10,750	64,500	26,000	3,750	8,000	15,000	17,000	6,500	8,000	7,000	4,500
Ma'btali	NA	NA	NA	NA	NA	NA	NA	NA	NA	NA	NA	NA
Mare'	4,000	12,000	40,000	40,000*	10,000	9,000	NA	NA	NA	NA	NA	NA
Mhambal	2,850*	NA	NA	NA	NA	9,000*	NA	NA	NA	NA	NA	NA
Qourqeena	2,000	11,800	57,500	28,000	2,150	7,750	15,400*	9,900*	7,500*	6,600*	NA	6,000*
Raju	NA	NA	NA	NA	NA	NA	NA	NA	NA	NA	NA	NA
Salqin	2,650	7,500	27,000	27,000	4,000	7,750	NA	NA	NA	NA	NA	NA
Sharan	2,500	12,000	60,000	25,000	2,500	7,000	NA	NA	NA	NA	NA	NA
Sheikh El-Hadid	3,500	8,000	60,000	NA	9,000	8,500	NA	NA	NA	NA	NA	NA
Suran	2,700	9,000	75,000	28,000	7,000	9,000	NA	NA	NA	NA	NA	NA
Teftnaz	2,200	11,000	23,000	3,200	2,500	8,500	16,500	19,500	9,500	9,000	8,700	7,600

* For these sub-districts, the median price are relying on less than 3 observations.
** NA means data not available.

MEDIAN WINTERISATION ITEMS' PRICE

Per 1 piece, Syrian Pounds

Sub-district	Adult's hat	Children's hat	Solid fuel stove	Fire extinguisher	Fire blanket
Northwest Syria	2,000	1,500	48,500	33,000	13,250
Afrin	NA	NA	32,500*	NA	NA
Aghtrin	NA	NA	65,000*	30,000*	NA
Al Bab	NA	NA	40,000*	NA	NA
Ariha	NA	NA	NA	NA	NA
Armanaz	NA	NA	48,500	NA	NA
Ar-Ra'ee	NA	NA	25,000	NA	NA
Atareb	NA	NA	35,000*	NA	NA
A'zaz	NA	NA	27,000*	NA	NA
Badama	NA	NA	74,000	NA	NA
Bennsh	2,000	1,700	24,000	NA	NA
Bulbul	NA	NA	73,000*	NA	NA
Dana	NA	NA	68,000	33,000	11,750
Daret Azza	NA	NA	NA	NA	NA
Darkosh	NA	NA	25,000*	NA	NA
Ghandorah	NA	NA	NA	NA	NA
Harim	NA	NA	75,000	NA	NA
Idleb	NA	NA	30,000	44,500*	13,250*
Jandairis	NA	NA	70,000	33,000	NA
Janudiyeh	NA	NA	75,000*	NA	NA
Jarablus	NA	NA	35,600	NA	NA
Jisr-Ash-Shugur	NA	NA	45,000	NA	NA
Kafr Takharim	NA	NA	37,500	NA	NA
Maaret Tamsrin	1,500*	1,200*	70,000	35,000	40,000
Ma'btali	NA	NA	NA	NA	NA
Mare'	NA	NA	20,000*	NA	NA
Mhambal	NA	NA	NA	NA	NA
Qourqeena	NA	NA	75,000	NA	NA
Raju	NA	NA	NA	NA	NA
Salqin	NA	NA	57,500	NA	NA
Sharan	NA	NA	65,000	NA	NA
Sheikh El-Hadid	NA	NA	NA	NA	NA
Suran	NA	NA	75,000	NA	NA
Teftnaz	2,000	1,500	NA	NA	NA

MEDIAN ALTERNATIVE FUELS PRICE

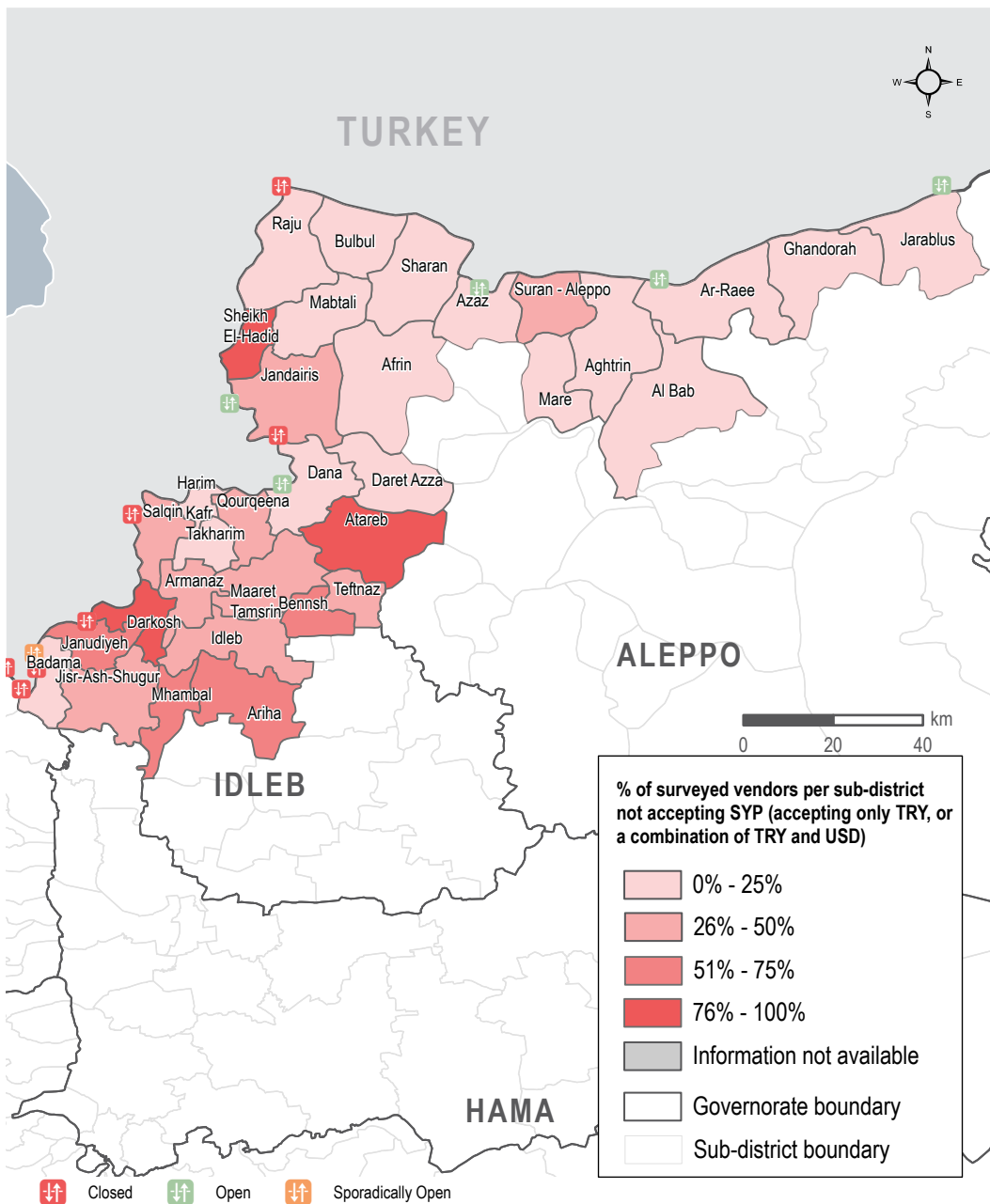
Per 1 kilo, Syrian Pounds

Sub-district	Firewood	Olive residues	Pistachio shells	Coal
Northwest Syria	290	240	340	250
Afrin	NA	NA	NA	NA
Aghtrin	290	220	330	300
Al Bab	320	NA	NA	300
Ariha	NA	NA	NA	NA
Armanaz	268	250	330	220
Ar-Ra'ee	270*	NA	NA	NA
Atareb	315*	NA	350*	250*
A'zaz	300	NA	NA	NA
Badama	285	215	350	220
Bennsh	290	278	350	268
Bulbul	315	210	330	215
Dana	288	240	330	225
Daret Azza	225	NA	NA	230
Darkosh	225	280	NA	280
Ghandorah	312*	NA	NA	NA
Harim	290	200	340	220
Idleb	400	270	355*	350
Jandairis	350	200	300	200
Janudiyeh	260	240	350*	260*
Jarablus	335	225	339	NA
Jisr-Ash-Shugur	225	215	340	225
Kafr Takharim	275	270	370	150
Maaret Tamsrin	285	250	340	250
Ma'btali	NA	NA	NA	NA
Mare'	340	200*	300*	290
Mhambal	240	NA	NA	265
Qourqeena	290	215	340	220
Raju	NA	NA	NA	NA
Salqin	310	290	350	230
Sharan	250	210	340	220
Sheikh El-Hadid	240	290	320	300
Suran	320	300	250	275
Teftnaz	295	285	350	270

* For these sub-districts, the median price are relying on less than 3 observations.

** NA means data not available.

SURVEYED VENDORS NOT ACCEPTING SYRIAN POUNDS Sub-districts



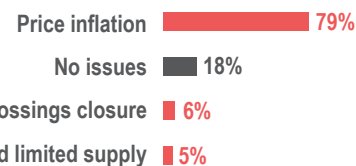
MARKET FUNCTIONALITY

During data collection, only 4 out of the 2,441 surveyed vendors across Aleppo and Idleb governorates reported having closed their shops.

SUPPLY CHALLENGES

While supply challenges reported by surveyed vendors were similar to last month's, the percentage of surveyed vendors reporting challenges increased slightly since September. Out of 2,441 surveyed vendors, 82% reported facing one or more supply challenges in October (it was recorded at 76% in September). Price inflation was again the most commonly reported supply challenge, reported by 79% of total respondents. This suggests that price inflation was a critical issue for surveyed vendors that may negatively impact availability of items. This challenge was followed by 6% of total respondents who reported the closure of border crossings impacting supply and 5% reporting their suppliers had limited supply (see figure 1).

Figure 1: Top 4 most commonly reported supply challenges by surveyed vendor (2,441 respondents)*



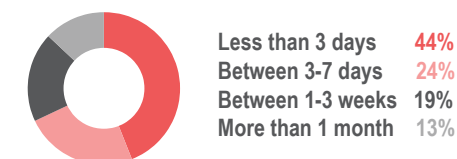
*Multiple answers allowed, thus findings may exceed 100%

RESTOCKING

While supply challenges were reported, none of the 2,431 surveyed vendors reported that they would be unable to restock if they were to run out of supplies. Yet, challenges continued to exist with the amount of backstock surveyed vendors could draw upon. Surveyed vendors were asked after how many days they would hypothetically run out of stock if supply was to be cut; 44% of respondents reported that they would run out of stock in less than 3 days and 24% reported

they would run out in 3 to 7 days (see figure 2). Among surveyed vendors, vegetables vendors, butchers and water trucking vendors were the ones reporting most frequently that they would run out in less than 3 days if their supply lines were cut, with percentages ranging from 14% to 17% for surveyed vendors depending on the shop type.

Figure 2: Reported number of days before all types of vendors would hypothetically run out of stock, if supply lines were to be cut (2,413 respondents)



AVAILABILITY OF USD BANKNOTES

Of the 201 surveyed informal exchange vendors who were asked if they had limited stock of any USD banknote denominations, 89% of surveyed vendors in Aleppo governorate and all of the surveyed vendors in Idleb governorate reported having limited stock of one or more denomination whilst the rest reported having enough stock of USD. Surveyed vendors in Aleppo most commonly reported having limited stock of 5 USD banknotes (56% of surveyed vendors) as well as 10 USD banknotes (reported by 54% of surveyed vendors). In Idleb, 20 USD banknotes were most commonly reported to be limited in stock (73% of surveyed vendors).

CURRENCIES ACCEPTED

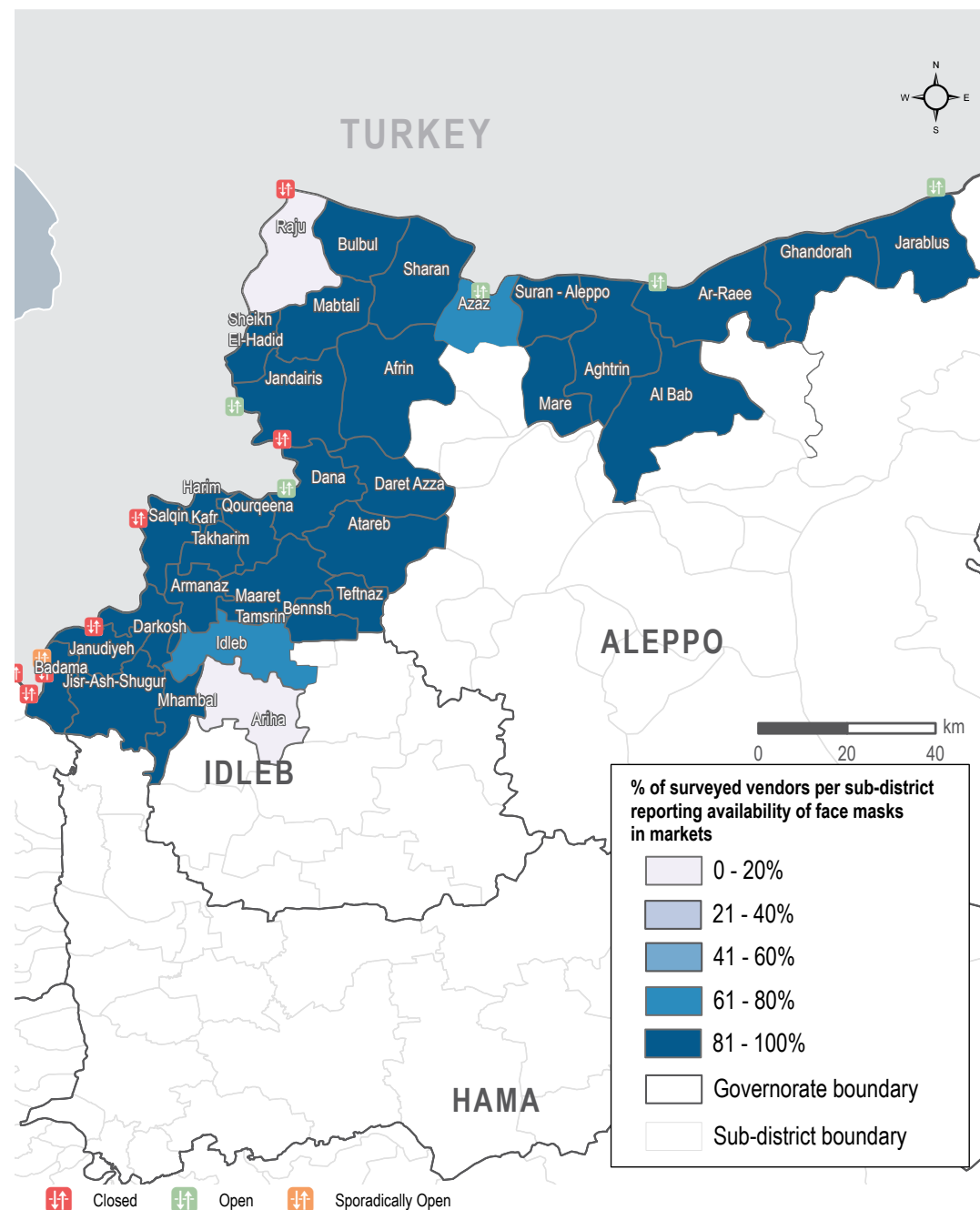
Surveyed vendors were also asked about the type(s) of currencies they accepted in their shops. In October, 85% of the total surveyed vendors reported not only selling their goods in SYP across NWS. Specifically, 52% of the total surveyed vendors reported accepting both SYP and TRY for the purchases made at their shops, and all the surveyed vendors in Bulbul, Daret Azza, Raju, Sharan, and Harim sub-districts reported selling all their goods in both SYP and TRY. Meanwhile, 24% of the total surveyed vendors reported accepting TRY only in their shops.

MEDIAN PRICE OF COVID-19 ITEMS Syrian Pounds

Sub-district	Face mask (1 piece)	Plastic gloves (box of 100)	Sterile alcohol (1 litre)	Hand sanitiser (500 ml)	Bottled bleach (1 litre)	Trash bags (roll of 30)
Northwest Syria	450	12,500	6,500	3,300	1,300	3,000
Afrin	400	10,000	7,500	2,000	1,900	3,100
Aghtrn	300	15,000	6,250	2,300	1,300	1,800
Al Bab	400	15,000	4,600	2,300	1,425	2,000
Ariha	NA	11,000*	NA	NA	1,300	NA
Armanaz	450	11,500	6,300	3,300	1,500	3,300
Ar-Ra'ee	700	17,500	7,000	2,650	1,500	1,600
Atareb	700*	9,200*	10,000*	5,000*	1,000*	1,500*
A'zaz	400	22,500	7,000	3,400	1,600	1,400
Badama	400	9,000	6,200	3,350	1,675	3,400
Bennsh	450	18,000	7,800	7,500	300	5,200
Bulbul	450	11,500	6,300	3,200	1,500	3,200
Dana	500	12,500	7,000	3,500	1,485	3,100
Daret Azza	500	16,000	6,500	4,000	1,400	2,000
Darkosh	400	14,500	14,000	4,500	1,100	3,000
Ghandorah	300	16,000	4,550*	2,250	1,200	1,080
Harim	450	11,100	6,500	3,050	1,200	3,200
Idleb	375	10,700	6,900	5,300	1,175	3,500
Jandairis	450	12,000	6,500	3,500	1,200	3,100
Janudiyeh	400	11,000	6,000	3,000	1,500	3,000
Jarablus	400	15,200	4,500	2,300	1,200	1,110
Jisr-Ash-Shugur	300	12,000	6,000	3,500	1,050	3,200
Kafr Takharim	325	15,000	10,000	5,000	1,200	2,500
Maaret Tamsrin	450	11,300	6,300	3,300	1,450	3,200
Ma'btali	500*	15,000*	NA	1,750*	1,100	NA
Mare'	500	12,000	5,750	3,100	1,500	1,800
Mhambal	450	30,000	18,750	NA	1,125	1,500
Qourqeena	450	11,500	6,300	3,200	1,600	3,250
Raju	250*	10,000*	10,000*	1,500*	1,800	NA
Salqin	450	16,875	9,500	3,500	1,250	2,500
Sharan	500	11,000	6,500	3,500	1,300	3,250
Sheikh El-Hadid	500	12,500	14,000	5,000	1,000	3,000
Suran	300	15,000	6,500	3,200	1,400	2,000
Teftnaz	400	15,000	7,500	8,000	300	5,500

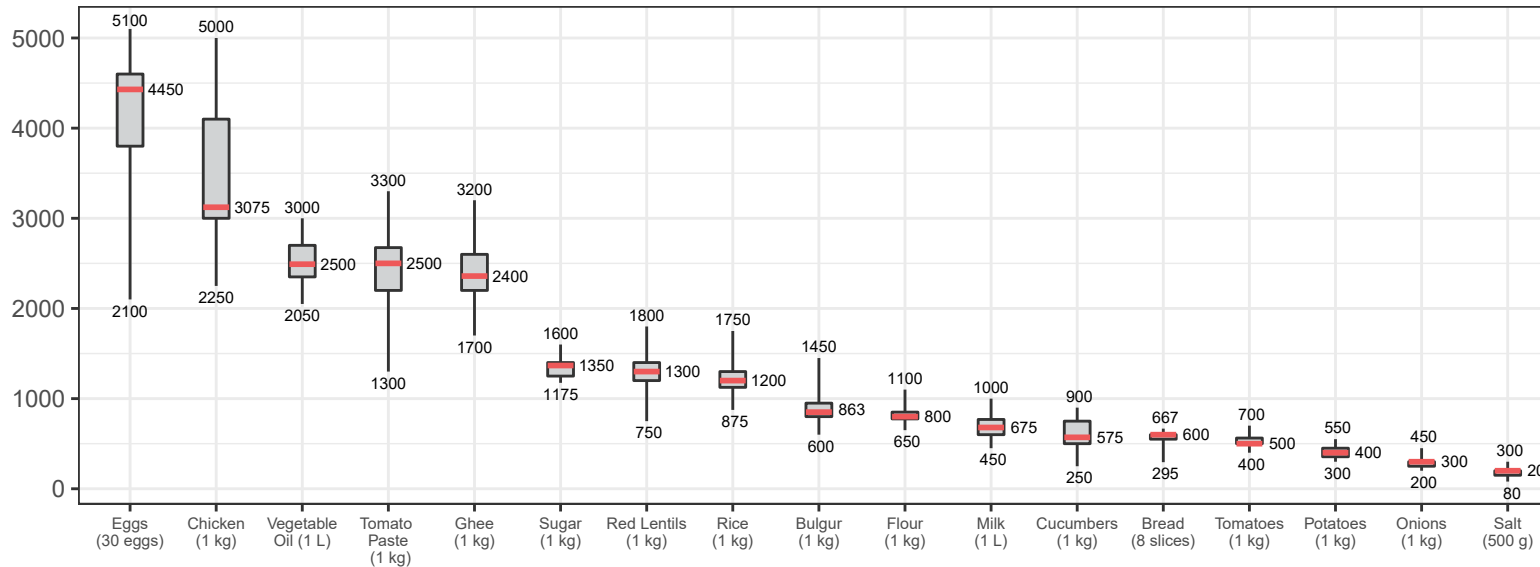
* For these sub-districts, the median price are relying on less than 3 observations.

AVAILABILITY OF FACE MASKS Sub-districts



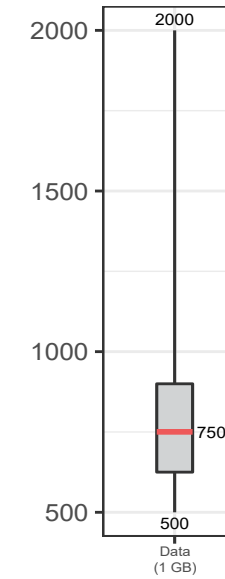
ASSESSED FOOD ITEMS

Syrian Pounds



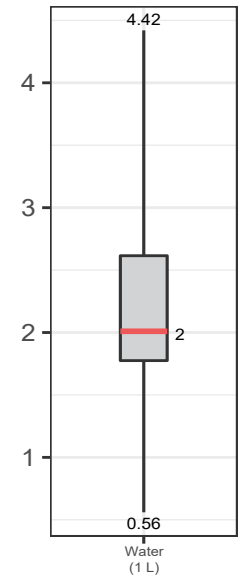
CELLPHONE DATA

Syrian Pounds



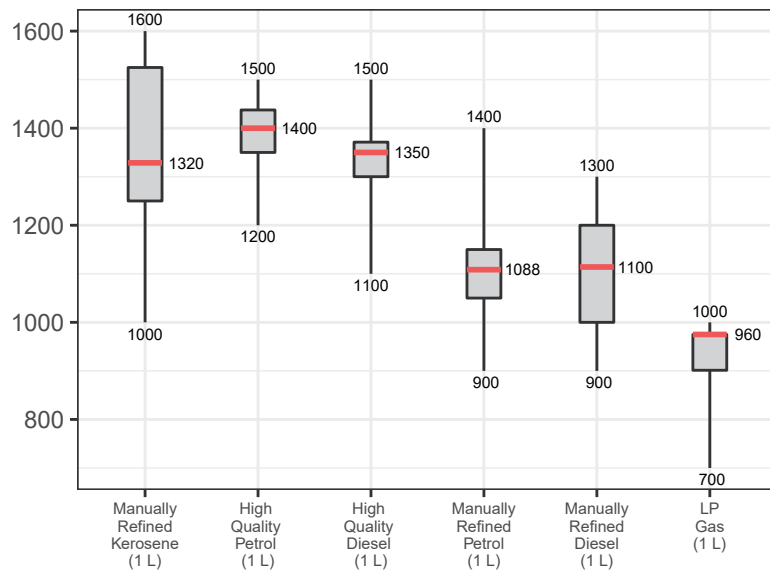
WATER TRUCKING

Syrian Pounds



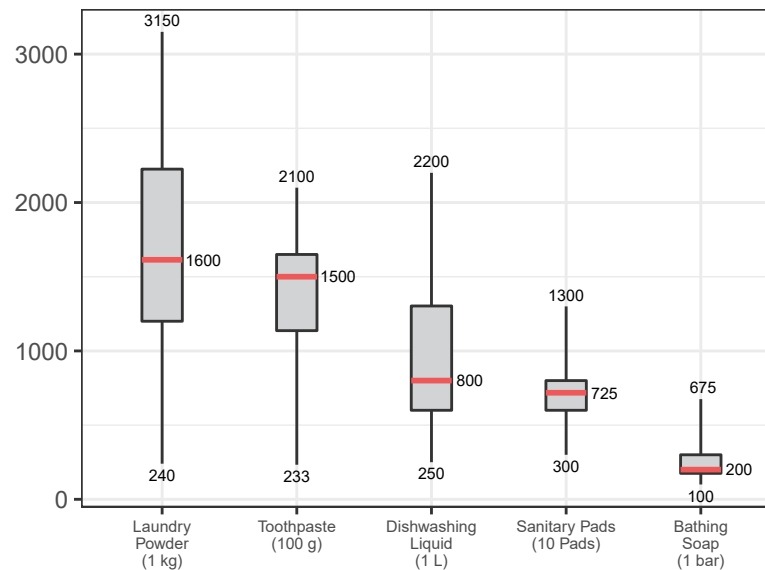
ASSESSED FUEL ITEMS

Syrian Pounds

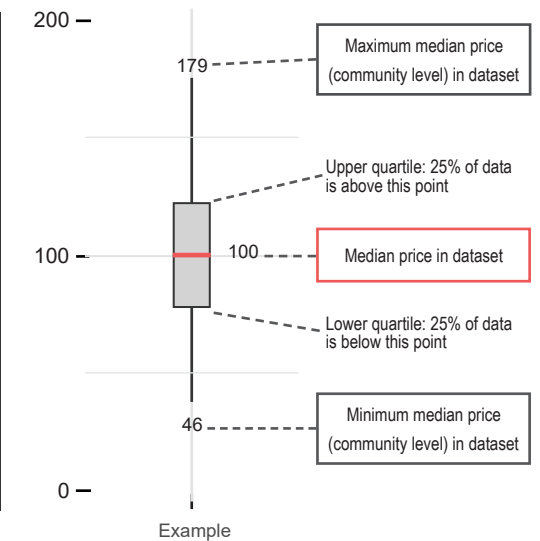


ASSESSED HYGIENE ITEMS

Syrian Pounds



READING BOXPLOTS



METHODOLOGY

In order to be included in the Syria Market Monitoring Exercise, markets must be permanent in nature, large enough to support at least two wholesalers, and diverse enough to provide a sufficient variety of goods and commodities. Additionally, the shops surveyed within each market must be housed in permanent structures and must sell certain items to be eligible for inclusion. Participating organisations train their enumerators on the Market Monitoring methodology and data collection tools using standard training materials developed by REACH. Each enumerator aims to assess three to five shops of each type in the main market in their assigned community/ neighbourhood, using surveys to collect information about the cheapest prices of each item and whether there are any barriers in the supply chain. In sub-districts where direct surveying by enumerators is not possible, data collection is conducted remotely through key informants such as shop owners, suppliers and consumers. A survey form is deployed on KoBo each month to capture price and stock information from different types of establishments, including grocery stores, fuel traders, currency exchange shops, water trucking services and mobile phone shops, among others. Nearly all participating partners submit their data to these KoBo forms, using the KoBoCollect Android app to upload data. A small number of partners, by prior permission, collect data using fully harmonised data collection tools deployed on other platforms, then submit their raw data to REACH for standardisation, compilation and cleaning.

Following data collection, REACH compiles and cleans all partners' data, normalising prices and cross-checking outliers. The cleaned data is then analysed by SMEB costs, components of the SMEB, and by commodities. These trends are observed at the sub-district-level and, when possible, at the community-level. Prices are divided into quartiles and boxplots are created

to assist CWG members in understanding the distribution of prices across the northeast and northwest of Syria. To illustrate local variations in prices and availability, REACH uses the collected data to map the price of the SMEB in each sub-district and adds illustrations of surrounding border crossings, with data sourced from the United Nations Office for the Coordination of Humanitarian Affairs (OCHA). In addition, each SMEB component costs and transport fuel prices are graphed to visualise trends over time.

The cleaned datasets are available on the [Humanitarian Data Exchange](#) website and the [REACH Resource Centre](#) and are distributed to all participating partners, as well as to interested clusters and the broader humanitarian community.

Calculating 'median cheapest price'

The regional figures are calculated by taking the median of the minimum-reported prices of a region's sub-districts. In turn, the sub-district medians are calculated using the Market Monitoring base-data.

Calculating Survival Minimum Expenditure Basket (SMEB) costs

The cost of a SMEB is calculated for each assessed sub-district by calculating the median cheapest price of each SMEB commodity in that sub-district, then multiplying these medians by the number of units that an average Syrian household requires to purchase in a month. The composition of the SMEB can be found on [page 1](#). SMEB vegetables include potatoes, tomatoes, onions, and cucumbers.

Calculating price trends over time

One month and six-month price changes and trends in this factsheet are calculated only with the comparable assessed communities of a sub-district with consistent coverage across months. On the other hand, in the dataset, medians are calculated taking all

assessed communities for the current month in consideration. Therefore, prices and percentage changes within the tables of this factsheet may slightly differ from the current month's dataset medians. In the narrative, both regional median SMEB values are shared; the SMEB value including all assessed communities that specific month, and the SMEB value only taking in consideration communities with consistent coverage since the previous month.

Changes to coverage

Given security and access constraints in the south of Syria, data collection has been unable to take place since July 2018. Escalation of conflict in October 2019 has resulted in limited coverage in northeast Syria since then.

Challenges and limitations

As the Syria Market Monitoring Exercise currently includes 26 partners based in 2 hubs, achieving a consistent approach is inherently challenging. Participating organisations are therefore requested to adopt harmonised data collection methodologies and tools to ensure that the data uploaded is as accurate as possible. Since this exercise collects data directly from vendors and relies on partner organisations for its wide coverage, Market Monitoring may sporadically lose coverage temporarily or for longer periods of time due to challenges in accessing locations or loss in the shared data collection capacity of the project. This impacts the ability to report on trends, as can be seen in the line graphs and 'NA' values in the tables.

ABOUT REACH

REACH Initiative facilitates the development of information tools and products that enhance the capacity of aid actors to make evidence-based decisions in emergency, recovery and development contexts. The methodologies used by REACH include primary data collection and in-depth analysis, and all activities are conducted through inter-agency aid coordination mechanisms. REACH is a joint initiative of IMPACT Initiatives, ACTED and the United Nations Institute for Training and Research - Operational Satellite Applications Programme (UNITAR-UNOSAT). For more information please visit our website:

www.reach-initiative.org. You can contact us directly at: geneva@reach-initiative.org and follow us on Twitter [@REACH_info](https://twitter.com/REACH_info)

ABOUT THE CASH WORKING GROUP

The Cash Working Group (CWG) was established in May 2014 to analyse the impact of the ongoing conflict on markets in Syria and guide the implementation of humanitarian cash and voucher programmes within those markets. REACH and the CWG have been partners on the Syria Market Monitoring Exercise since early 2015.

About REACH's COVID-19 response

As an initiative deployed in many vulnerable and crisis-affected countries, REACH is deeply concerned by the devastating impact the COVID-19 pandemic may have on the millions of affected people we seek to serve. REACH is currently working with Cash Working Groups and partners to scale up its programming in response to this pandemic, with the goal of identifying practical ways to inform humanitarian responses in the countries where we operate. COVID-19-relevant market monitoring and market assessments are a key area where REACH aims to leverage its existing expertise to help humanitarian actors understand the impact of changing restrictions on markets and trade. Updates regarding REACH's response to COVID-19 can be found in a [devoted thread](#) on the REACH website. Contact geneva@impact-initiatives.org for further information.