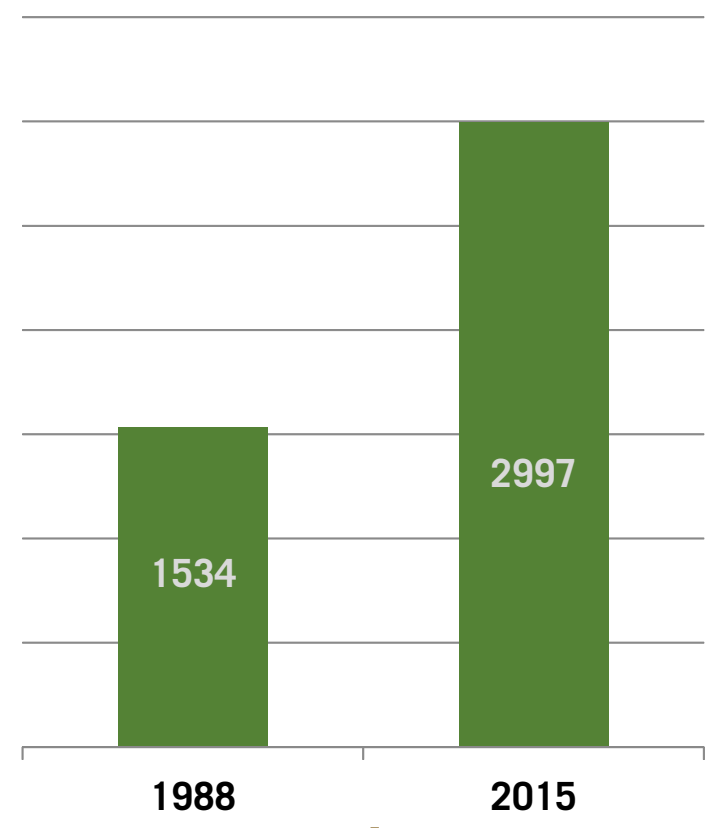




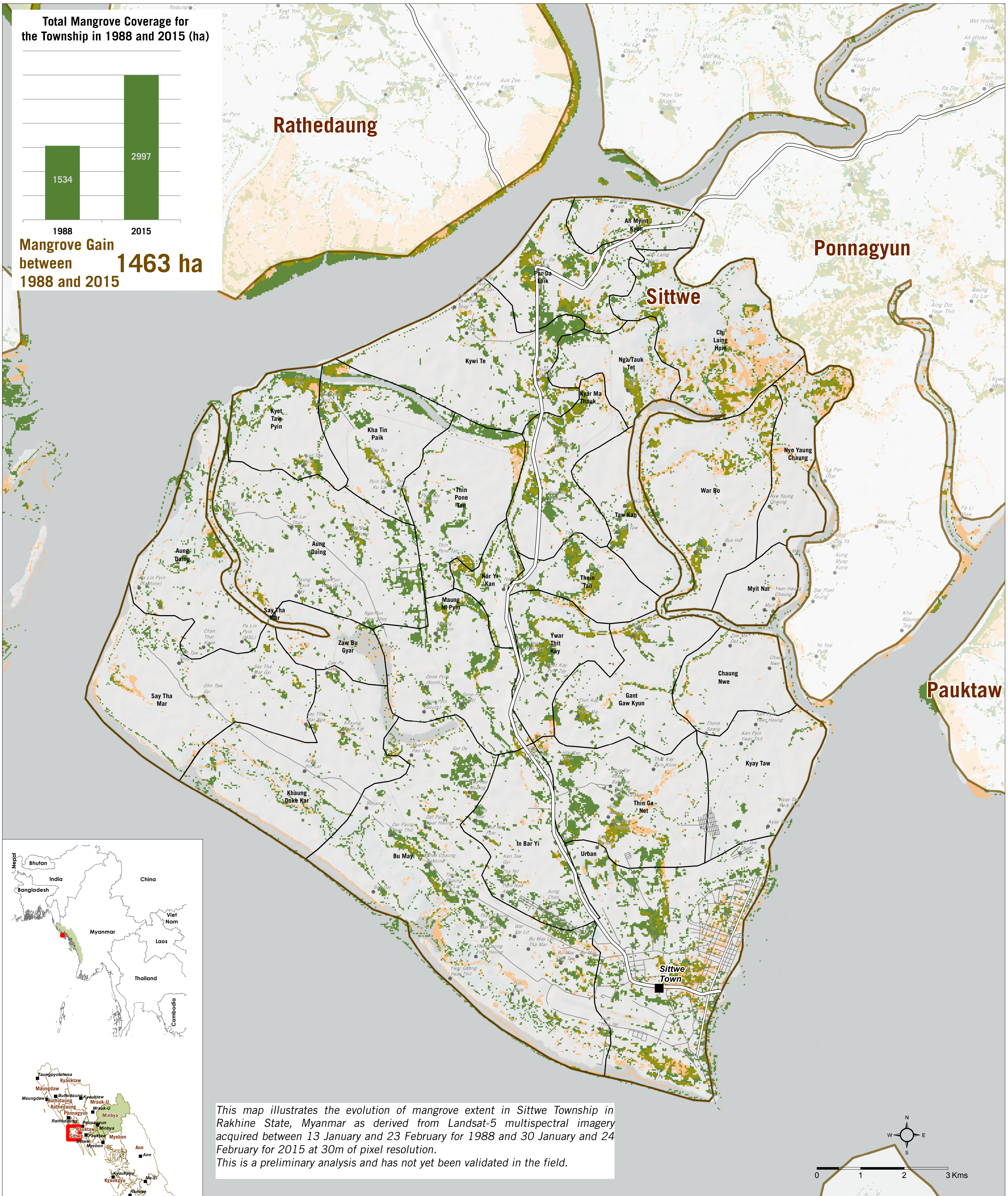
Mangrove Coverage Evolution in Sittwe Township 1988-2015

IOM - OIM

Total Mangrove Coverage for the Township in 1988 and 2015 (ha)



Mangrove Gain between 1988 and 2015 **1463 ha**



This map illustrates the evolution of mangrove extent in Sittwe Township in Rakhine State, Myanmar as derived from Landsat-5 multispectral imagery acquired between 13 January and 23 February for 1988 and 30 January and 24 February for 2015 at 30m of pixel resolution. This is a preliminary analysis and has not yet been validated in the field.

- New Mangrove area
- Remaining area 1988-2015
- Decrease between 1988 and 2015
- State Boundary
- Township Boundary
- Village-Tract
- Village

Data sources:
Landcover Analysis: UNOSAT
Administrative Boundaries, Settlements: OCHA
Roads: OSM
Coordinate System: WGS 1984 UTM Zone 46N
Contact: reach.mapping@impact-initiatives.org

File: REACH_MMR_Map_Sittwe_HVA_Mangrove_21OCT2015_A1

Funded by



Note: Data, designations and boundaries contained on this map are not warranted to be error-free and do not imply acceptance by the REACH partners, associated, donors mentioned on this map.