



# IDP Camp Profile - Alwand 1

Diyala, Iraq  
August 2016

Management agency: Government and YAO Organization  
Manager/Focal point: Mithaq Abed Hamad  
Phone number: 7705887797  
Email: n/a  
Registration actor: Government and YAO Organization

## Summary

This profile provides an overview of conditions in Alwand 1 camp. Primary data was collected through household surveys on 16-08-16. Households were randomly sampled to a 95% confidence and 10% margin of error, based on population figures provided by CCCM. In some cases, additional information from camp managers has been used to support findings. Round V of data collection was in April 2016.

## Camp Overview

# of individuals: 5838  
# of households: 858  
Date opened: 01-08-14  
Occupied number: 850  
Ongoing extension: No  
Planned capacity: 1600  
Camp area: 225,388

## Demographics

53% male / 47% female

2% Over 60 2%  
24% 18-59 22%  
9% 12-17 7%  
10% 6-11 8%  
8% 0-5 8%

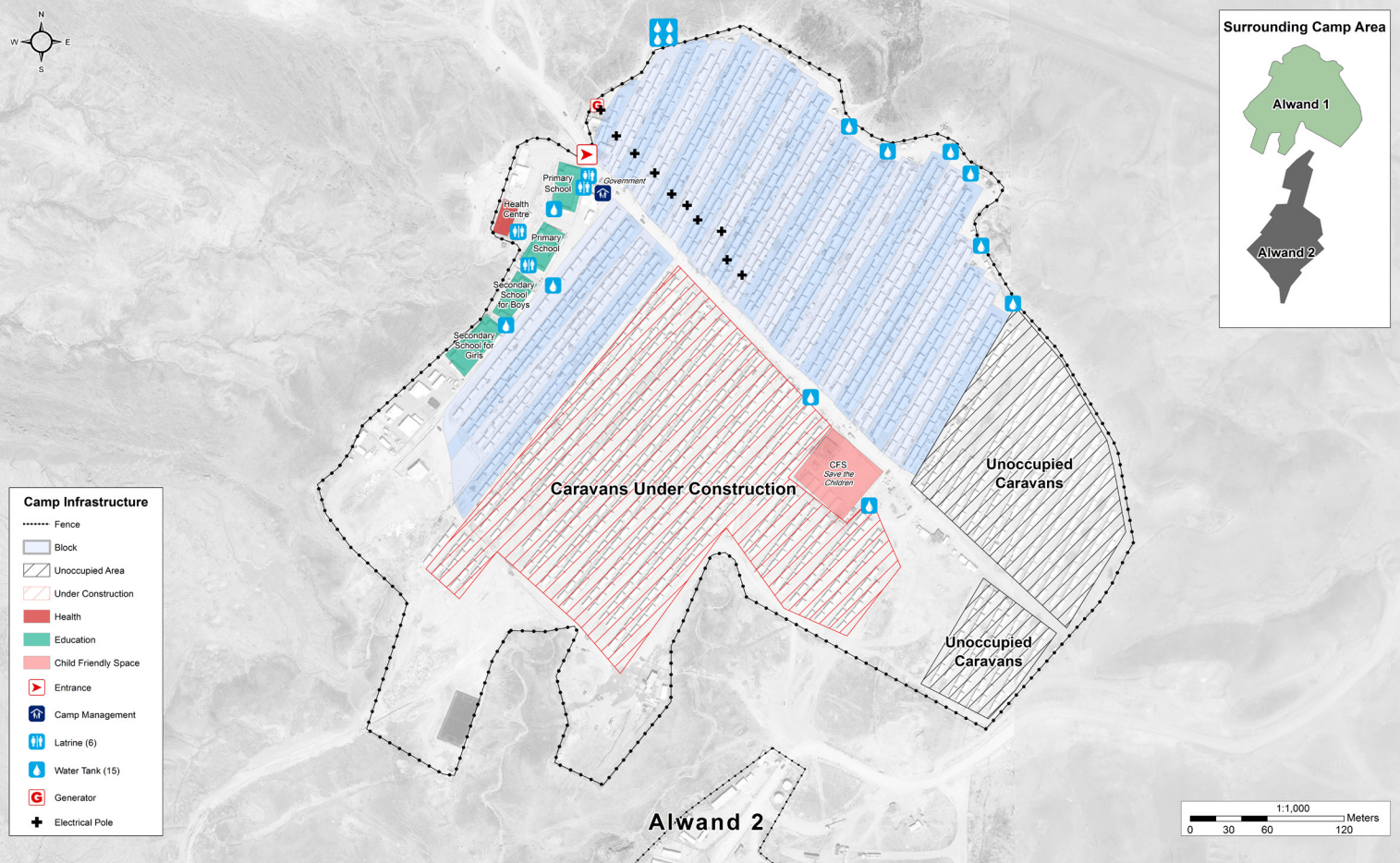


## Location Map



## IDP Camp Map - Alwand 1

Lat. 35° 25' 3.431" N Long. 45° 36' 21.359" E



## Sectoral Minimum Standards

|            |                                                                             | Target                 | Previous Round    | Current Round     | Achievement |
|------------|-----------------------------------------------------------------------------|------------------------|-------------------|-------------------|-------------|
| Education  | % of children aged 6-11 attending formal school                             | 100%                   | 83%               | 80%               | ●           |
|            | % of children aged 12-17 attending formal school                            | 100%                   | 37%               | 67%               | ●           |
| Food       | % of households accessed Family Food Parcel or equivalent in the past month | 100%                   | 98%               | 99%               | ●           |
| Health     | Health services are available on-site or within walking distance            | Yes                    | Yes               | Yes               | ●           |
| CCCM       | Average open area per household                                             | min. 30m <sup>2</sup>  | 184m <sup>2</sup> | 204m <sup>2</sup> | ●           |
| Protection | % of IDPs registered on an individual basis (MODM/DDM)                      | 100%                   | 96%               | 100%              | ●           |
|            | % of households accessed shelter assistance since arrival at the camp       | 100%                   | 92%               | 99%               | ●           |
|            | Average covered area per person                                             | min. 3.5m <sup>2</sup> | 4m <sup>2</sup>   | 4m <sup>2</sup>   | ●           |
| Shelter    | Average number of individuals per shelter                                   | max.5                  | 8                 | 7                 | ●           |
|            | # of persons per latrine                                                    | max. 20                | 10                | 9                 | ●           |
|            | # of persons per shower                                                     | max. 20                | 10                | 9                 | ●           |
|            | Frequency of solid waste disposal at least weekly                           | min. weekly            | Yes               | Yes               | ●           |
| WASH       |                                                                             |                        |                   |                   |             |
|            |                                                                             |                        |                   |                   |             |

\*GPS tracking of camp infrastructure was not possible this round due to restrictions from authorities. Area calculations subsequently could not be determined.

Targets based on minimum standards agreed with the CCCM Cluster, Iraq. Findings based on household-level data, enumerator field observations, and camp management documentation

● Minimum standard reached, ● More than 50% minimum standard reached, ● Less than 50% of minimum standard reached or not at all





# IDP Camp Profile - Alwand 1

Diyala, Iraq  
August 2016

Management agency: Government and YAO Organization  
Manager/Focal point: Mithaq Abed Hamad  
Phone number: 7705887797  
Email: n/a  
Registration actor: Government and YAO Organization

## Shelter

### Top three observed shelter types\*

|         |      |             |
|---------|------|-------------|
| Caravan | 100% | <div></div> |
| n/a     | n/a  |             |
| n/a     | n/a  |             |

\*Households were asked to select all shelter typologies within household.

### Winterisation and NFI items

|     |                                            |
|-----|--------------------------------------------|
| 28% | reported a second fly sheet                |
| 74% | reported access to a heater                |
| 91% | reported at least one blanket per person   |
| 76% | reported at least one mattress per person  |
| 2.2 | average number of carpets                  |
| 55% | reported shelter provides warmth in winter |

### Hazards

|     |                                            |
|-----|--------------------------------------------|
| 22% | reported exposed electrical cables at site |
|-----|--------------------------------------------|

### Shelter Improvement

|     |                                                   |
|-----|---------------------------------------------------|
| 16% | reported making own improvements to their shelter |
|-----|---------------------------------------------------|

## Community Organisation

### IDP committees

|     |                                        |
|-----|----------------------------------------|
| 85% | reported awareness of IDP committee(s) |
|-----|----------------------------------------|

### Complaints mechanism

|      |                                            |
|------|--------------------------------------------|
| 100% | reported awareness of complaints mechanism |
|------|--------------------------------------------|

## Protection

### Family Separation

|    |                                                          |
|----|----------------------------------------------------------|
| 0% | reported hosting unaccompanied or separated minors       |
| 0% | reported that other family members intended to join them |

### Vulnerable groups

|                               |     |             |
|-------------------------------|-----|-------------|
| Pregnant / lactating women    | 14% | <div></div> |
| Chronically ill individual(s) | 6%  | <div></div> |
| Disabled individual(s)        | 2%  | <div></div> |
| Female headed households      | 7%  | <div></div> |

### Intentions

|    |                                                          |
|----|----------------------------------------------------------|
| 6% | planned to move to a different location in next 3 months |
|----|----------------------------------------------------------|

### Restrictions

|     |                                                           |
|-----|-----------------------------------------------------------|
| 62% | reported entry or exit restrictions during daylight hours |
|-----|-----------------------------------------------------------|

## Food Security and Coping Strategies

### Reported access to food assistance

|     |                                                         |
|-----|---------------------------------------------------------|
| 99% | accessed food assistance in past month                  |
| 87% | received Public Distribution System (PDS) in past month |

### Top three food consumption coping strategies

|            |     |             |
|------------|-----|-------------|
| Cheaper    | 50% | <div></div> |
| Less meals | 16% | <div></div> |
| Borrowed   | 14% | <div></div> |

### Top three reported livelihood coping strategies

|                      |     |             |
|----------------------|-----|-------------|
| Spent savings        | 24% | <div></div> |
| Support from Family  | 20% | <div></div> |
| Charitable Donations | 13% | <div></div> |

## WASH

### Latrines and showers

|     |                                                    |
|-----|----------------------------------------------------|
| 0%  | reported public or communal latrines               |
| n/a | public/communal latrines lockable from the inside  |
| n/a | public/communal latrines with functioning lighting |

### Top three reported methods of waste removal

|           |      |             |
|-----------|------|-------------|
| Collected | 100% | <div></div> |
| n/a       | n/a  |             |
| n/a       | n/a  |             |

### Reported drinking water sources

|     |                                                        |
|-----|--------------------------------------------------------|
| 0%  | connection inside the home to collective water storage |
| 40% | connection inside the home to private water storage    |
| 0%  | communal water tap outside the shelter                 |

### Access to water

|     |                                                                         |
|-----|-------------------------------------------------------------------------|
| 50% | reported 24 consecutive hours without access to water in the past month |
|-----|-------------------------------------------------------------------------|

## Household Income

|    |                                         |
|----|-----------------------------------------|
| 2% | reported as being economically inactive |
|----|-----------------------------------------|

### Top three income sources\*:

|                     |     |             |
|---------------------|-----|-------------|
| Government Pension  | 17% | <div></div> |
| Humanitarian Aid    | 12% | <div></div> |
| Agricultural labour | 12% | <div></div> |

\*Households were asked to select all income sources within household.