



# IDP Camp Profile - Shooting Camp

Baghdad, Iraq  
December 2016

Management agency: Government  
Manager/Focal point: Abdullah Kazee Ajmee  
Phone number: 7812203357  
Email: n/a  
Registration actor: Camp Management

## Summary

This profile provides an overview of conditions in Shooting Camp camp. Primary data was collected through household surveys on 31-12-2016. Households were randomly sampled to a 95% confidence and 10% margin of error, based on population figures provided by CCCM. In some cases, additional information from camp managers has been used to support findings. Round VI of data collection was in September 2016

## Camp Overview

# of individuals: 840  
# of households: 174  
Date opened: 7-09-2014  
Occupied number: 200  
Ongoing extension: no  
Planned capacity: 432  
Camp area: 110,354m<sup>2</sup>

## Demographics

49% male / 51% female

2%	Over 60	3%
19%	18-59	20%
10%	12-17	8%
9%	6-11	11%
9%	0-5	9%

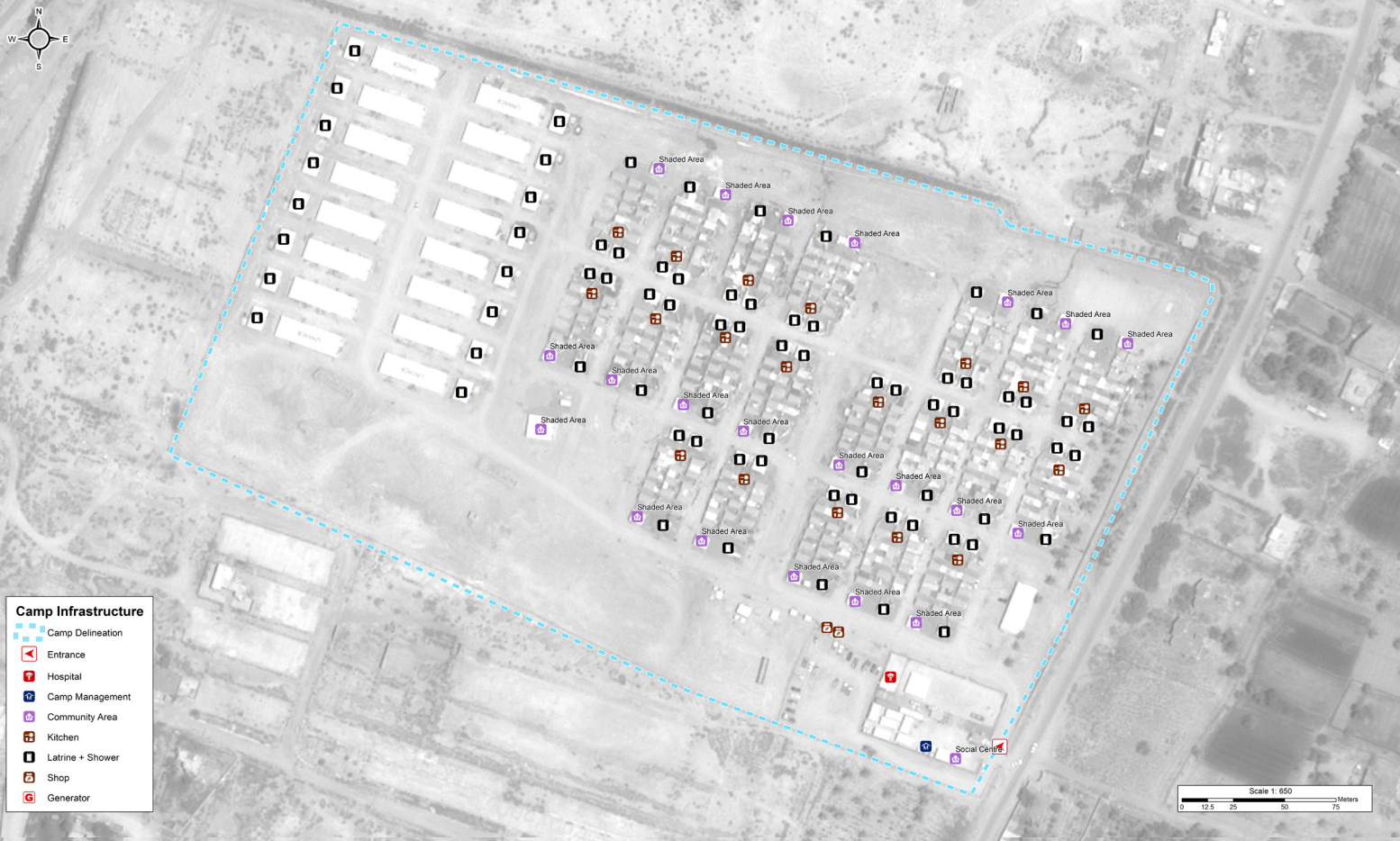


## Location Map



## IDP Camp Map - Shooting Camp

Lat. 33° 29' 2.87" N Long. 44° 11' 21.9" E



## Sectoral Minimum Standards

		Target	Previous Round	Current Round	Achievement
Education	% of children aged 6-11 attending formal school	100%	23%	52%	●
	% of children aged 12-17 attending formal school	100%	27%	21%	●
Food	% of households accessed Family Food Parcel or equivalent in the past month	100%	92%	94%	●
Health	Health services are available on-site or within walking distance	Yes	Yes	Yes	●
CCCM*	Average open area per household	min. 30m <sup>2</sup>	n/a	n/a	
Protection	% of IDPs registered on an individual basis (MODM/DDM)	100%	99%	94%	●
Shelter	Average covered area per person	min. 3.5m <sup>2</sup>	n/a	3.7m <sup>2</sup>	●
	Average number of individuals per shelter	max.5	4	2	●
WASH	# of persons per latrine	max. 20	6	12	●
	# of persons per shower	max. 20	6	12	●
	Frequency of solid waste disposal at least weekly	Min. weekly	Yes	Yes	●

\*GPS tracking of camp infrastructure was not possible this round due to restrictions from authorities. Area calculations subsequently could not be determined.

Targets based on minimum standards agreed with the CCCM Cluster, Iraq. Findings based on household-level data, enumerator field observations, and camp management documentation

● Minimum standard reached, ● More than 50% minimum standard reached, ● Less than 50% of minimum standard reached or not at all





# IDP Camp Profile - Shooting Camp

Baghdad, Iraq  
December 2016

Management agency: Government  
Manager/Focal point: Abdullah Kazee Ajmee  
Phone number: 7812203357  
Email: n/a  
Registration actor: Camp Management


## Shelter

### Top observed shelter type

Caravan 99% 


### Top reported needed shelter items

Tarpaulin 100% 

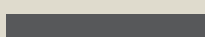
Timber 49% 

Sun shading net 46% 

### Top reported needed basic items

Blanket 100% 

Cooker 100% 

Mattresses 76% 

### Top reported needed winter item

Kerosene heater 92% 

### Top reported needed summer item

Rechargeable fan 51% 

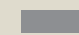
## Food Security

### Reported access to food assistance

94% accessed food assistance in past month

61% received Public Distribution System (PDS) in past month

### Top three food consumption coping strategies

Cheaper 25% 

Borrowed 11% 

n/a n/a

## WASH

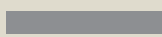
### Latrines and showers

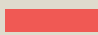
100% reported public or communal latrines

99% public/communal latrines lockable from the inside

82% public/communal latrines with functioning lighting

### Top three reported methods of waste removal

Communal bin 61% 

Burning 38% 

Rubbish pit 1% 

### Reported drinking water sources

0% connection inside the home to collective water storage

0% connection inside the home to private water storage

51% communal water tap outside the shelter

### Access to water

0% reported 24 consecutive hours without access to water in the past month

## Community Organisation

### IDP committees

100% reported awareness of IDP committee(s)

### Complaints mechanism

15% made a complaint about conditions or assistance

## Protection

### Family Separation

0% reported hosting unaccompanied or separated minors

3% reported that other family members intended to join them

### Vulnerable groups

Pregnant / lactating women 11% 

Chronically ill individual(s) 5% 

Disabled individual(s) 0%

Female headed households 11% 

### Intentions

21% planned to move to a different location in next 3 months

### Restrictions

99% reported being able to leave the camp temporarily (e.g. to go to the market, for livelihood opportunities)

## Livelihoods

3% reported as being economically inactive

### Top three income sources\*:

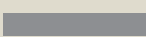
Humanitarian aid 25% 

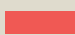
Public security official 21% 

Self-employed 21% 

\*Households were asked to select all income sources within household.

### Top three reported livelihood coping strategies

Debt 57% 

Sold assistance 29% 

Spent savings 22% 