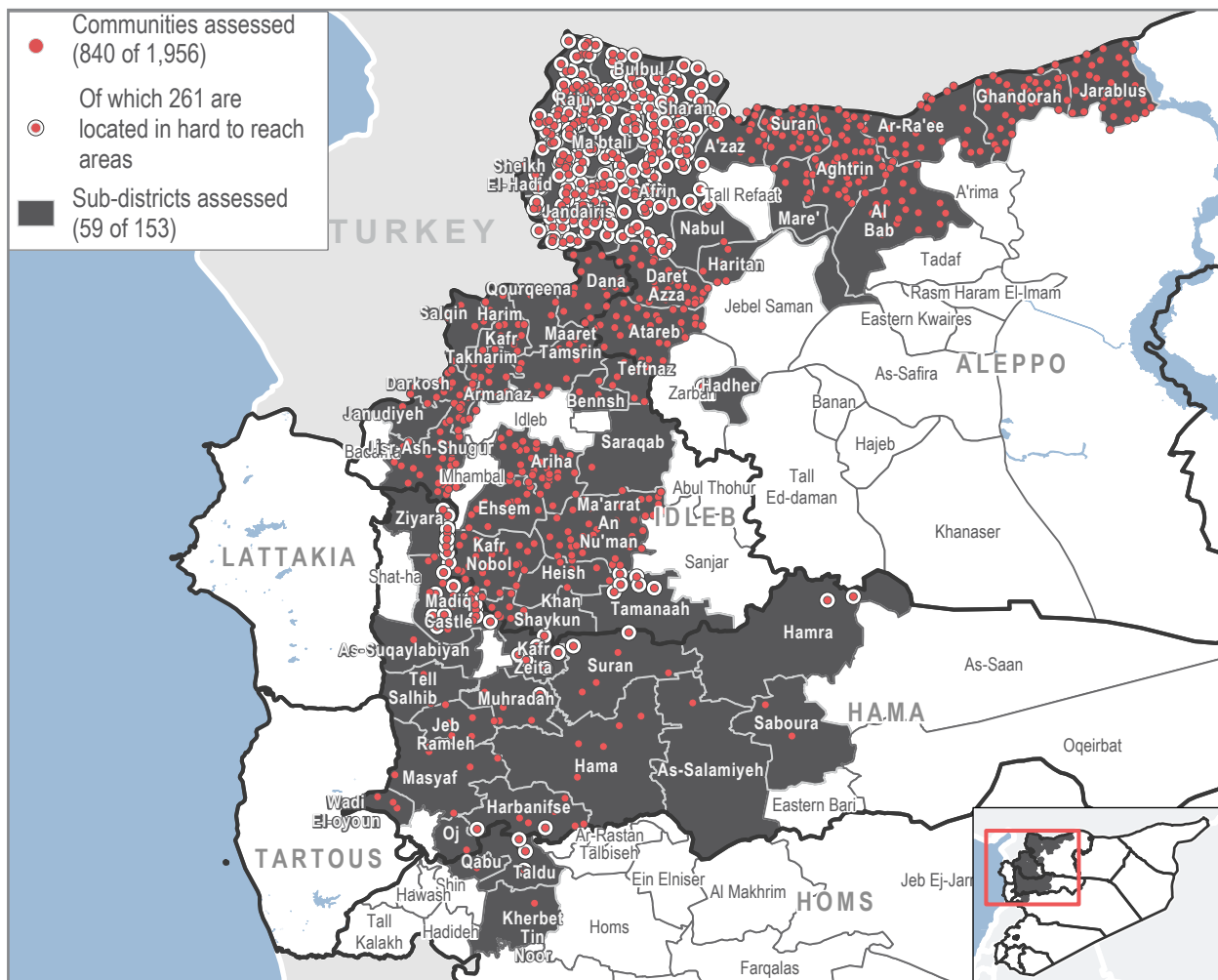


Humanitarian Situation Overview in Syria (HSOS)

Northwest Syria, November 2018

Coverage



Introduction

HSOS is a monthly assessment that aims to provide comprehensive, multi-sectoral information about the humanitarian situation inside Syria. The assessment is conducted at the community level covering [displacement](#), [shelter and non-food items \(SNFI\)](#), [health](#), [water, sanitation and hygiene \(WASH\)](#), [food security and livelihoods \(FSL\)](#), and [education](#).

The factsheet presents information gathered in 840 communities across Idlib (262 communities), northern and western Aleppo* (482 communities), Hama (92 communities), and Homs (4 communities) governorates. Data was collected during the month of December 2018, and refers to the situation in the northwest region in November 2018. Findings are indicative rather than representative, and should not be generalised across the region.

For community-level data, datasets are available on the [REACH Resource Centre](#), [the Humanitarian Data Exchange](#), and are also distributed through partners across the humanitarian community.

*The northern and western parts of Aleppo where humanitarian response and coordination is conducted from the northwest rather than the northeast.

Top 3 reported priority needs in assessed communities:

- 1 Healthcare
- 2 Food Security
- 3 Livelihoods

People in need (PIN) Demographics*

5,696,896 total PIN 👤 2,860,560 👤 2,836,336

Survival Minimum Expenditure Basket (SMEB):^{1,2}

Average price in **November 2018**: **58,778** Syrian pound (SYP)
 One month change: **+6.2%**
 Six month change: **+8.7%**

* Figure estimates based on [HNO 2018](#) population data for the entire NWS region including areas not covered by HSOS. These numbers were collected in 2017 and provide a baseline as updated numbers are currently not available.

Key events impacting the humanitarian situation in NWS

Operation "Olive Branch" commences in Afrin. ^a	212,724 individuals spontaneously return to 287 communities in rural Aleppo governorate and 354,682 individuals return to Aleppo city. ^b	95,000 IDPs reportedly arrived in opposition pocket of NWS from eastern Ghouta, northern rural Homs, and southwest Syria. ^c	Approximately 1.9 million IDPs reported in Idlib, western Aleppo, northern Hama and Eastern Latakia. ^d	Announcement of a demilitarized zone in NWS that bars the presence of heavy weaponry and certain armed opposition groups. ^e	Escalation in hostilities within the area considered part of the announced demilitarized zone in Idlib and surrounding areas. ^f
January 2018	February 2018	March-August 2018	End of August 2018	17 September 2018	November 2018

Northwest Syria, November 2018

CONTEXT

Towards the end of November 2018, several communities in the area considered part of the announced demilitarized zone in Idlib and surrounding areas witnessed an escalation in hostilities.^f Consequently, according to the [ISMI Overview of IDP Movements in Northern Syria, November 2018](#), a high number of internally displaced person (IDP) departures were reported in Ma'arrat An Nu'man sub-district in Idlib governorate, reportedly driven by shellings in Jarjnaz and neighbouring communities.^g Additionally, inter-armed opposition group tensions in northern Aleppo governorate were reported,^h as well as further displacement in Idlib and Aleppo governorates.ⁱ

KEY HIGHLIGHTS^j

IDP movements and presence of tented shelters in northern Aleppo governorate

In November, of the 420 assessed communities in northern Aleppo, key informants (KIs) in 372 (89%) reported that IDPs resided in the community. In parallel, according to ISMI, Al Bab sub-district in northern Aleppo governorate witnessed both IDP arrivals and departures in November.^k Furthermore, in this sub-district, KIs reported that IDPs primarily resided in independent apartments/houses (reported in 12 (52%) assessed communities) or in tents (reported in 11 (48%) of assessed communities). In comparison, of the 420 assessed communities in northern Aleppo governorate, KIs in 286 (68%) assessed communities reported that IDPs primarily resided in independent apartments/houses while KIs in only 45 (11%) reported that IDPs primarily resided in tents. This indicates that the proportion of IDPs residing in tents in Al Bab sub-district is significantly higher compared to the rest of northern Aleppo governorate.

Insufficient access to water in Idlib governorate

Of the 262 assessed communities in Idlib governorate, KIs in 121 (46%) assessed communities reported that there was an insufficient amount of water in the community to meet household needs. KIs reported that residents most commonly adjusted to this lack of water by spending money usually used for other items to purchase additional water (reported in 94 (36%) assessed communities) or by modifying hygiene practices (reported in 81 (31%) assessed communities). In addition, KIs in 115 (44%) assessed communities reported there was a lack of functioning latrines due to an insufficient amount of water in the community. Commonly reported difficulties in accessing functioning latrines were that septic tanks were not being emptied (reported in 90 (34%) assessed communities), blocked sewage connections (reported in 34 (13%) assessed communities), and a lack of water for flushing (reported in 27 (10%) assessed communities).

High rent prices and limited access to livelihoods in Hama governorate

Livelihoods was reported as a priority need in 77 (84%) of the 92 assessed communities in Hama governorate. In 58 (63%) assessed communities, KIs reported unstable daily employment as the main source of income in the community, while KIs in 39 (42%) assessed communities reported that income was insufficient to meet household needs. In addition, KIs reported that average monthly rent prices in Hama governorate were approximately 8,590 SYP in November, compared to a considerably lower regional average monthly rent price of 5,800 SYP throughout assessed communities in northwest Syria (NWS). KIs in 44 (48%) assessed communities further reported that the average monthly household income in Hama governorate was less than 50,000 SYP. This indicates that while households in Hama governorate did not have a higher income than the regional average of less than 50,000 SYP per household (reported in 515 (61%) assessed communities in NWS), residents still faced higher rent prices.



Displacement⁴

- Across the 840 assessed communities in NWS, KIs in 699 (82%) reported that IDPs resided in the community. Throughout these assessed communities, the most common reasons for IDPs to remain in the host community were family ties/good relations with host community (reported in 547 (64%) assessed communities) and access to employment/income/shelter (reported in 535 (63%) assessed communities).



Food Security & Livelihoods

- Of the 744 assessed communities in Idlib, northern and western Aleppo governorate, KIs in 578 (78%) reported challenges in accessing enough food to meet household needs. In comparison, among the 92 assessed communities in Hama governorate, KIs in 46 (50%) reported barriers to accessing a sufficient amount of food. In all of these governorates, the most commonly reported barrier to accessing sufficient food was a lack of financial resources to buy food in markets.
- KIs in 212 (81%) of 262 assessed communities in Idlib governorate reported community shops as the main source of bread. However, KIs in 5 assessed communities in Jisr-Ash-Shugur sub-district reported that bread was not available in the community.



Education

- Across the 262 assessed communities in Idlib governorate, KIs in 133 (51%) communities reported that not all school-aged children had access to education. The most commonly reported barriers to accessing education were the long distance to educational facilities (reported in 71 (27%) assessed communities), a lack of teaching staff (reported in 63 (24%) assessed communities), and a lack of school supplies (reported in 50 (19%) assessed communities).



WASH

- In Hama governorate, KIs in 11 (12%) of the 92 assessed communities reported that water tasted/smelled bad in November. These communities were all located in Kafr Zeita, Harbanifse, Saboura and Masyaf sub-districts.
- In western Aleppo governorate, KIs in 59 (95%) of the 62 assessed communities reported a sufficient amount of water to meet household needs in November. However, in northern Aleppo governorate, KIs in only 274 (65%) of the 420 assessed communities reported a sufficient amount of water. Additionally, in northern Aleppo governorate, the most commonly reported coping strategy for insufficient water was to spend money usually used for other items to purchase water (reported in 104 (25%) assessed communities).



Health

- Among the 420 assessed communities in northern Aleppo governorate, KIs in 284 (68%) reported that there were no functioning medical facilities available in the community. The most commonly reported barriers to accessing healthcare was a lack of medical facilities (reported in 220 (52%) assessed communities).
- Of the 420 assessed communities in northern Aleppo governorate, KIs in 248 (59%) reported that women delivered babies in facilities in nearby communities while KIs in 123 (29%) reported that women delivered babies at home with a midwife's care. In contrast, of the 62 communities assessed in western Aleppo governorate, KIs in 50 (81%) assessed communities reported that women delivered babies in facilities in nearby communities, while there were no reports of women delivering babies at home with a midwife's care.

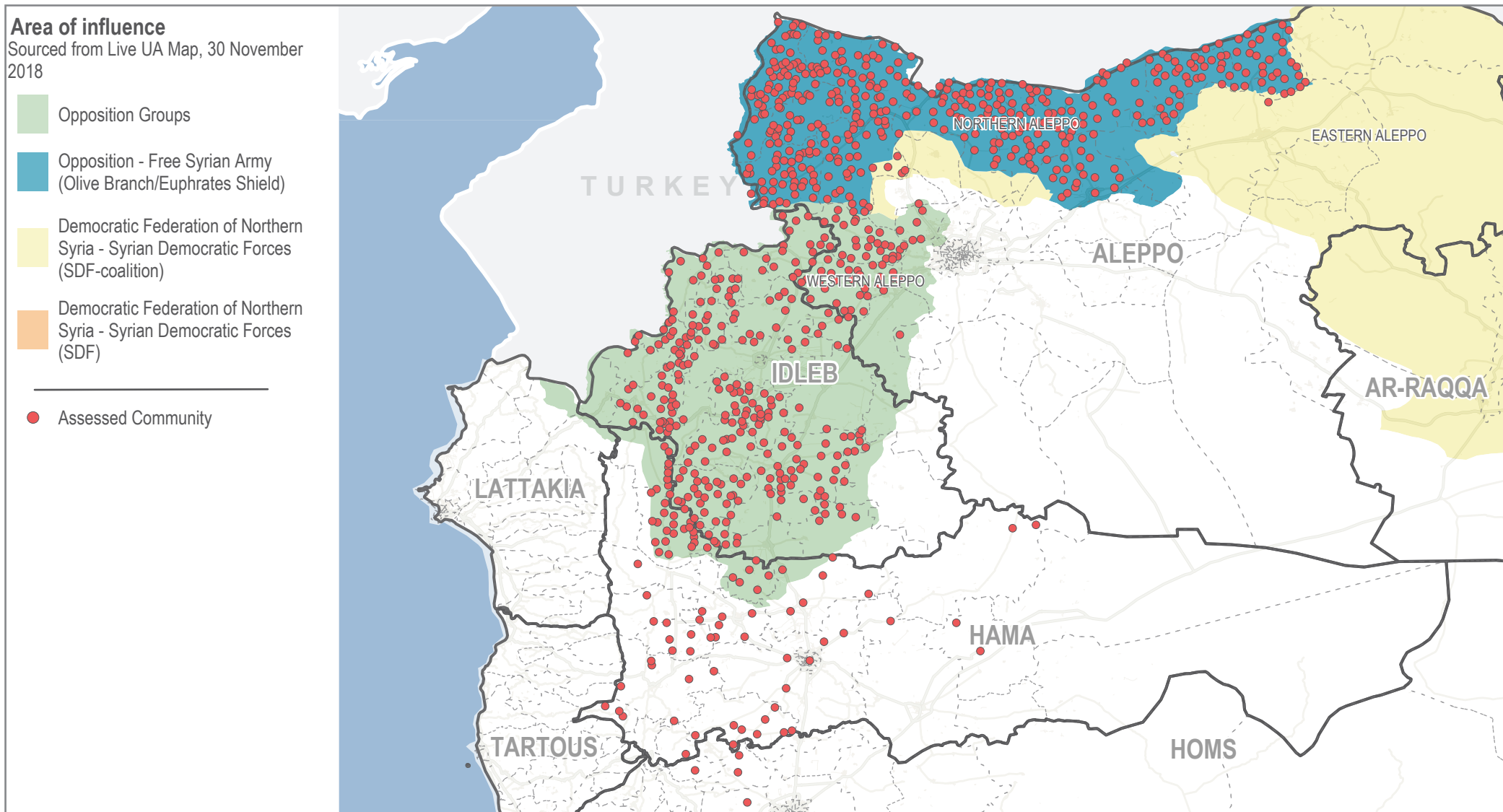


Shelter and NFI

- Across the 262 assessed communities in Idlib governorate, the most commonly reported electricity sources in November were community generators (reported in 108 (45%) assessed communities) and solar power (reported in 70 (27%) assessed communities). However, of the 30 assessed communities in Jisr-Ash-Shugur sub-district, KIs in 21 (70%) reported batteries as the most common source of electricity.

Northwest Syria, November 2018

Regional areas of influence:



Northwest Syria, November 2018

DISPLACEMENT⁴

19,440 - 21,640 Estimated number of IDP arrivals in assessed communities in November.

3,830 - 5,270 Estimated number of spontaneous returns in assessed communities in November.⁵

Communities with the largest estimated number of IDP arrivals:*

Foah (Bennsh, Idleb) **4,000 - 4,100**

Telamnas (Ma'arrat An Nu'man, Idleb) **1,150 - 1,160**

Babilla (Ma'arrat An Nu'man, Idleb) **750 - 800**

*Reported as community, (sub-district, governorate)

Top 3 reported sub-districts of origin for IDP arrivals:^{6,7}

Ma'arrat An Nu'man (Idleb governorate)

Afrin (Aleppo governorate)

Al Bab (Aleppo governorate)

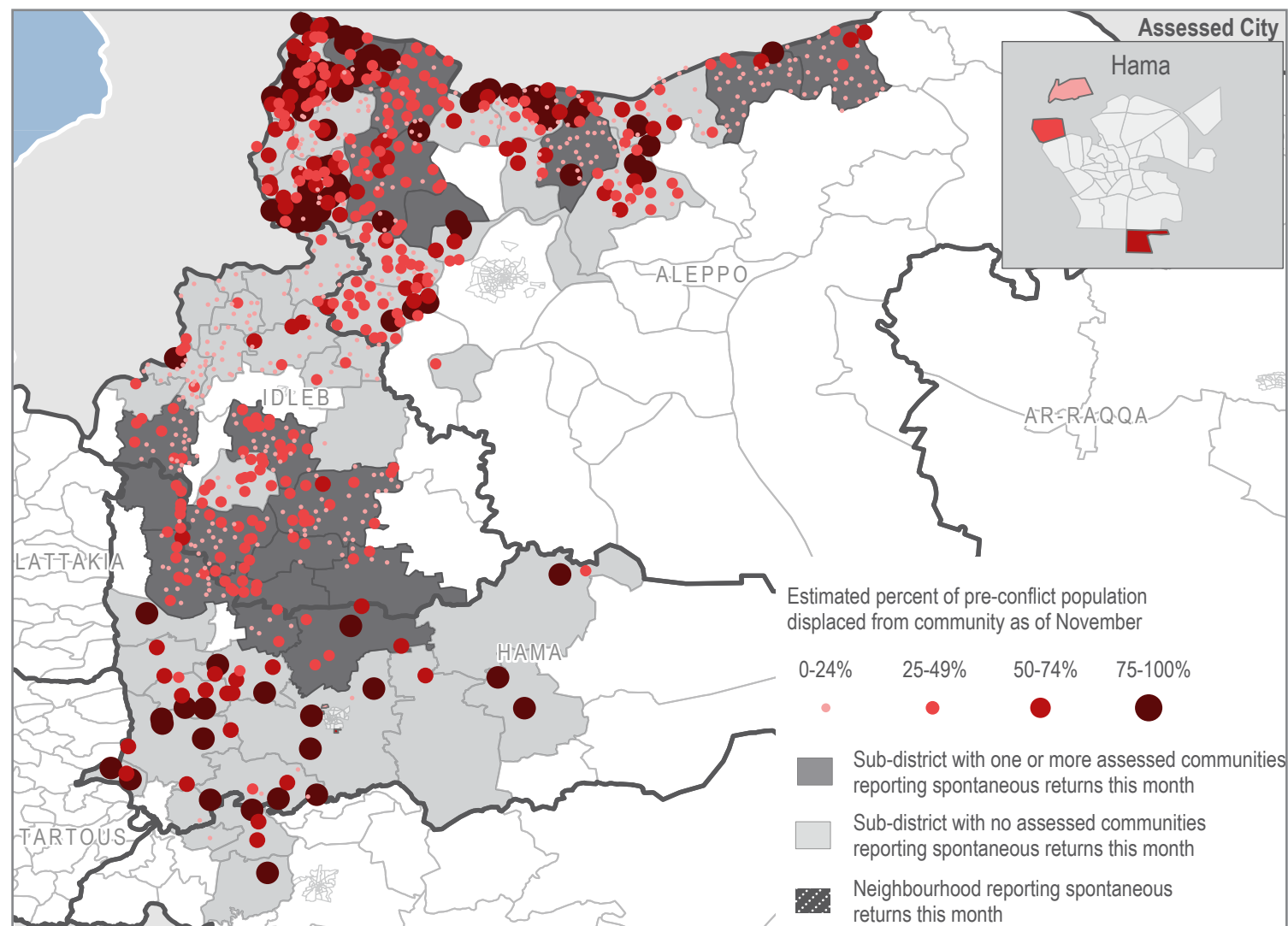
*Reported as sub-district (governorate)

787 communities reported no PCP departures.⁸

Top 3 reasons for PCP departures in the remaining 53 assessed communities:^{6,7,9}

Loss of income	68%
Reduced access to basic services	47%
Escalation of conflict	28%

Estimated proportion of pre-conflict population (PCP) displaced from community:



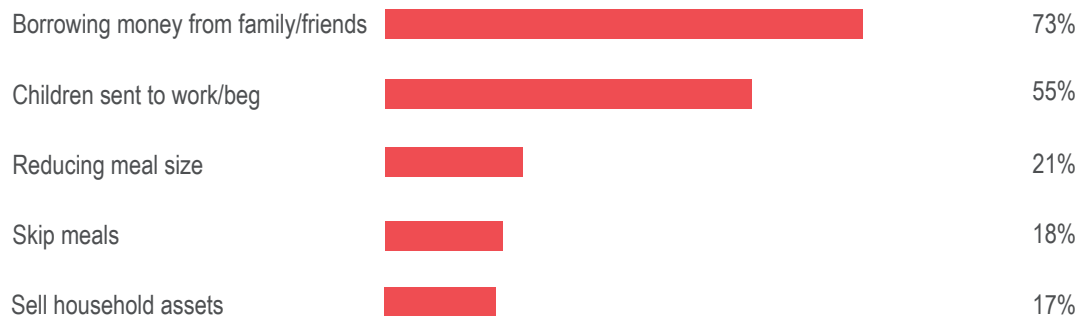
Northwest Syria, November 2018



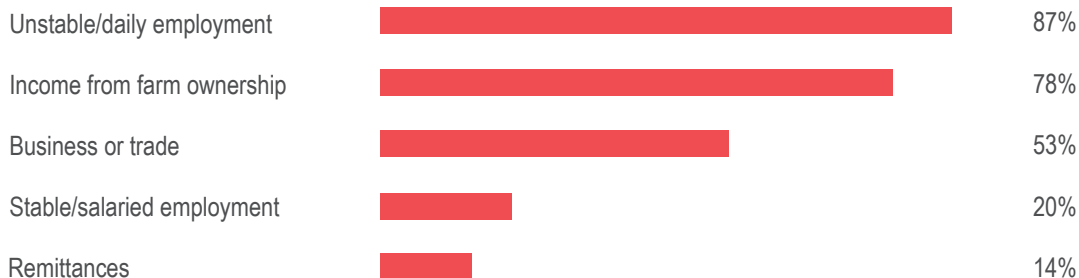
FOOD SECURITY & LIVELIHOODS

- 232/840** Communities reported having received food distributions in the last month.
- 201/840** Communities reported that residents were unable to access shops and markets.
- 1/840** Community, Bara (Idleb governorate), reported that residents used extreme food-based coping strategies to deal with insufficient income.¹⁰
- Less than 50,000 SYP** Most commonly reported household monthly income range.¹

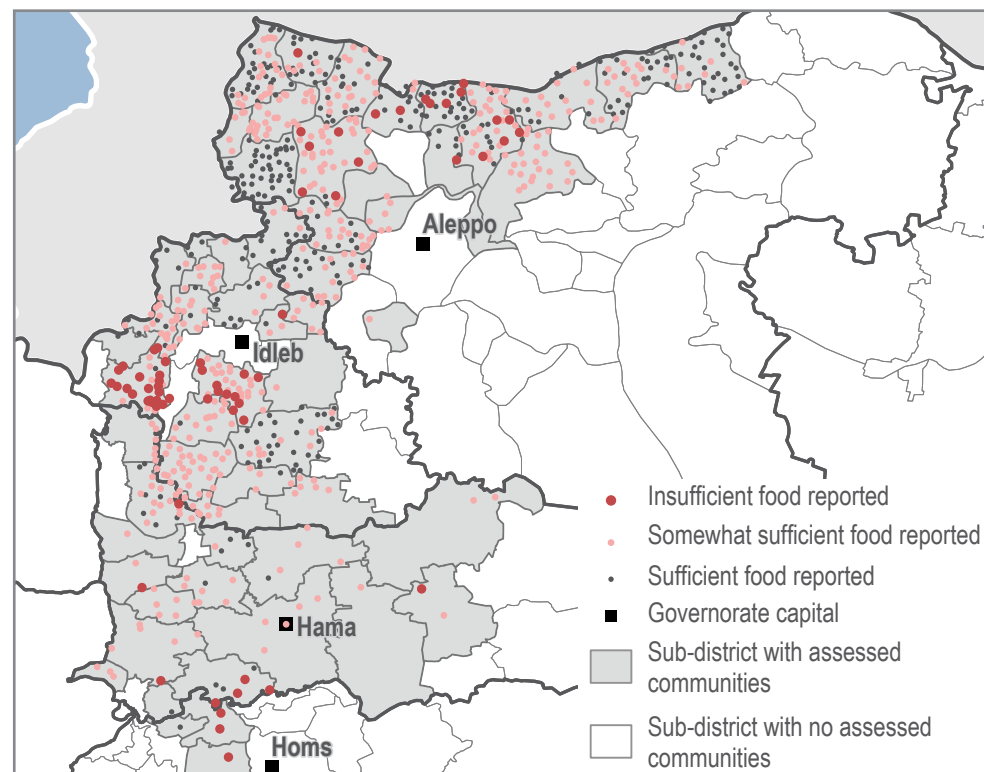
145 communities reported that residents had enough income to cover household needs. The most commonly reported coping strategies to deal with a lack of income in the remaining 674 assessed communities were:^{6,7,9}



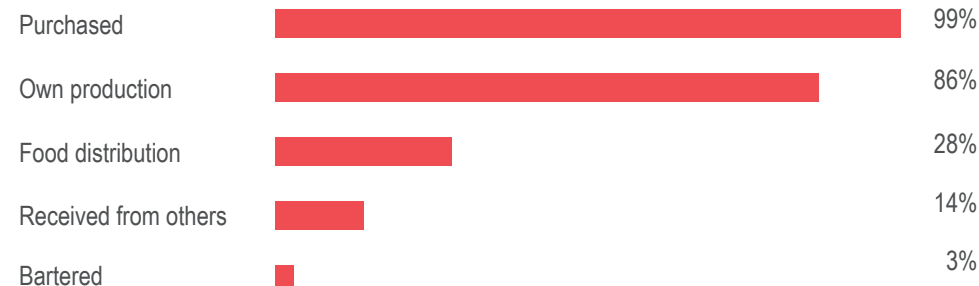
Most commonly reported main sources of income:^{6,7}



Communities that reported having an insufficient quantity of food:¹¹



Most commonly reported ways of obtaining food:^{6,7}



Northwest Syria, November 2018



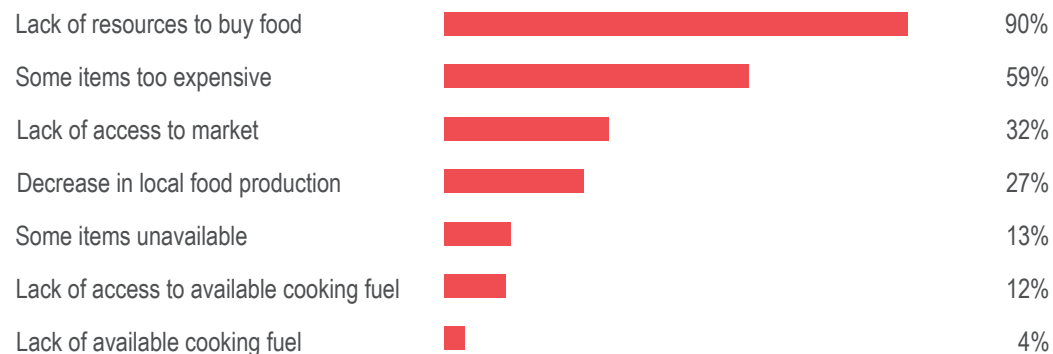
FOOD SECURITY & LIVELIHOODS

Core food item prices reported (in SYP):^{1,12}

Food item:	Regional average price in November:	One month change:	Six month change:
Bread (8 pieces)	150	0%	+9%
Rice (1 kilogram)	300	0%	-8%
Lentils (1 kilogram)	250	+25%	0%
Sugar (1 kilogram)	225	0%	-25%
Cooking oil (1 litre)*	450	0%	-3%

*includes the combined vegetable oil and ghee prices

213 communities reported that residents experienced no challenges in accessing food. The most common difficulties experienced in the remaining 625 assessed communities were:^{6,7,9}



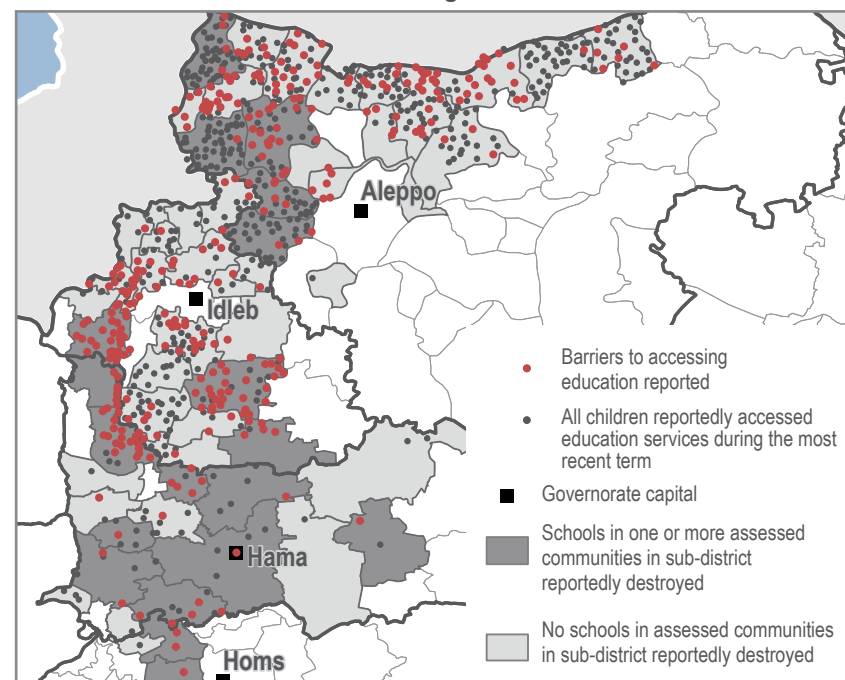
EDUCATION

763/840 communities reported having functioning primary education facilities, while 355 communities reported having functioning secondary education facilities.¹³

513 communities reported that all children were able to access education. The most commonly reported barriers to education in the remaining 327 assessed communities were:^{6,7,9}



Prevalence of barriers to accessing education services:



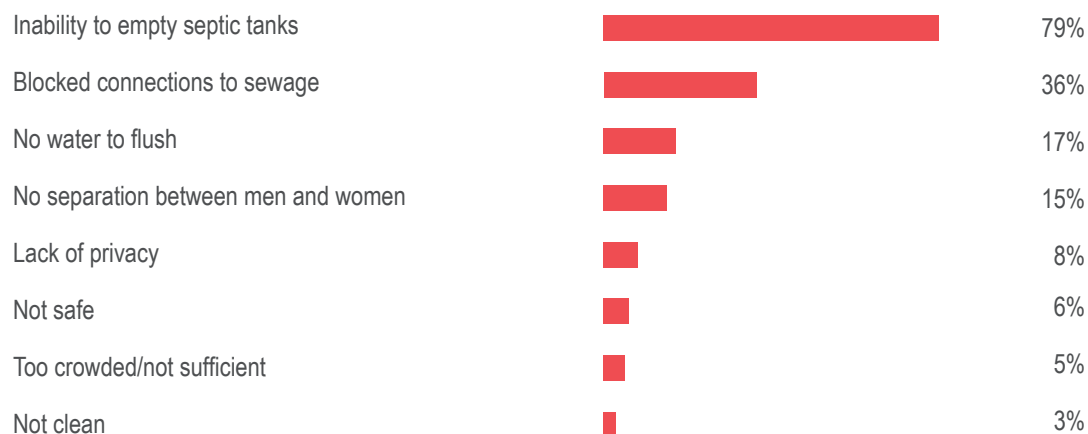
Northwest Syria, November 2018



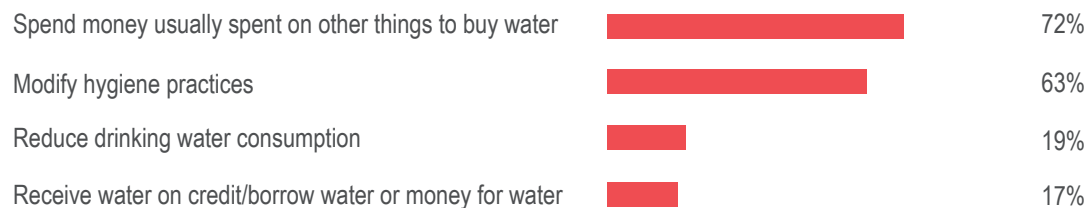
18/840 Communities reported that water from their primary source tasted and/or smelled bad.

0 Communities reported that drinking water from their primary source made people sick.

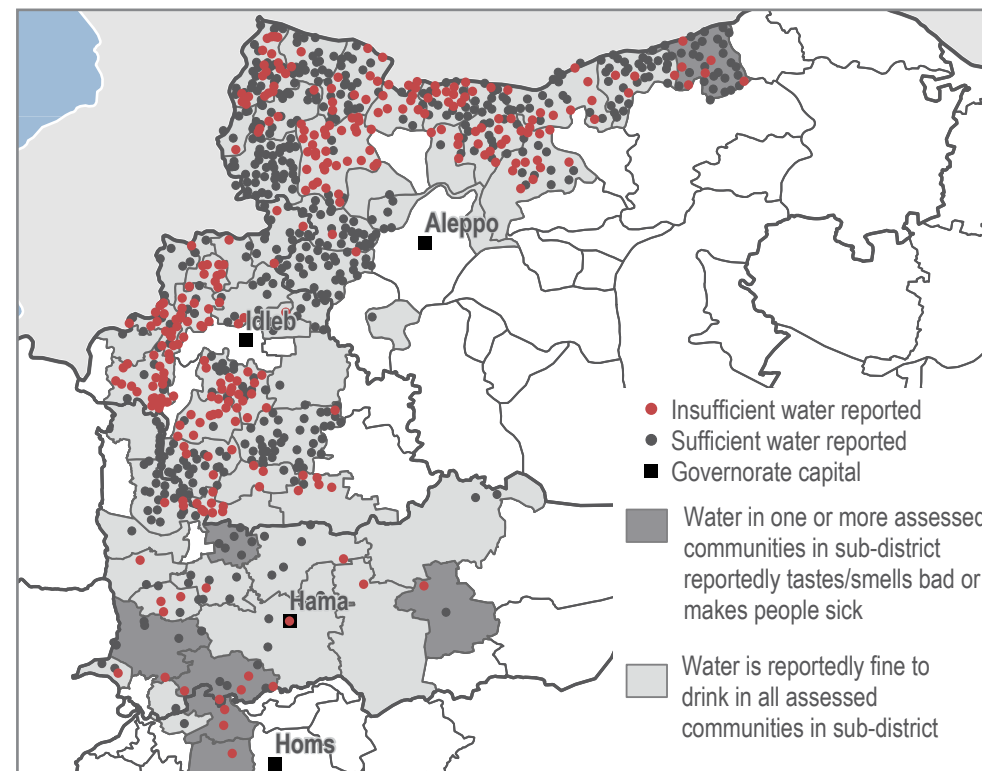
521 communities reported that residents had no problems with latrines. The most commonly reported problems with latrines in the remaining **318** assessed communities were:^{5,7,9}



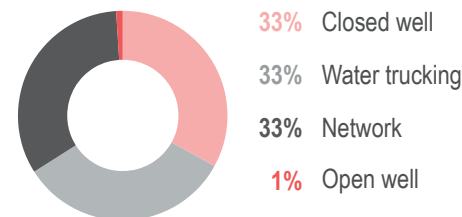
545 communities reported that they had sufficient amounts of water to meet household needs. The most common coping strategies to deal with a lack of water in the remaining **292** assessed communities were:^{6,7,9}



Communities that reported insufficient amounts of water to meet household needs:¹¹



Primary drinking water source reported:⁷



Primary method of garbage disposal reported:^{6,7}



Northwest Syria, November 2018

HEALTH

185/840 Communities reported that no assessed medical items were available in their community.¹⁴

141/840 Communities reported that the majority of women did not give birth in a formal health facility.

2/467 Communities, Foah (Idleb governorate) and Ghandorah (Aleppo governorate), reported that some individuals had been diagnosed with SAM (Severe Acute Malnutrition).¹⁵

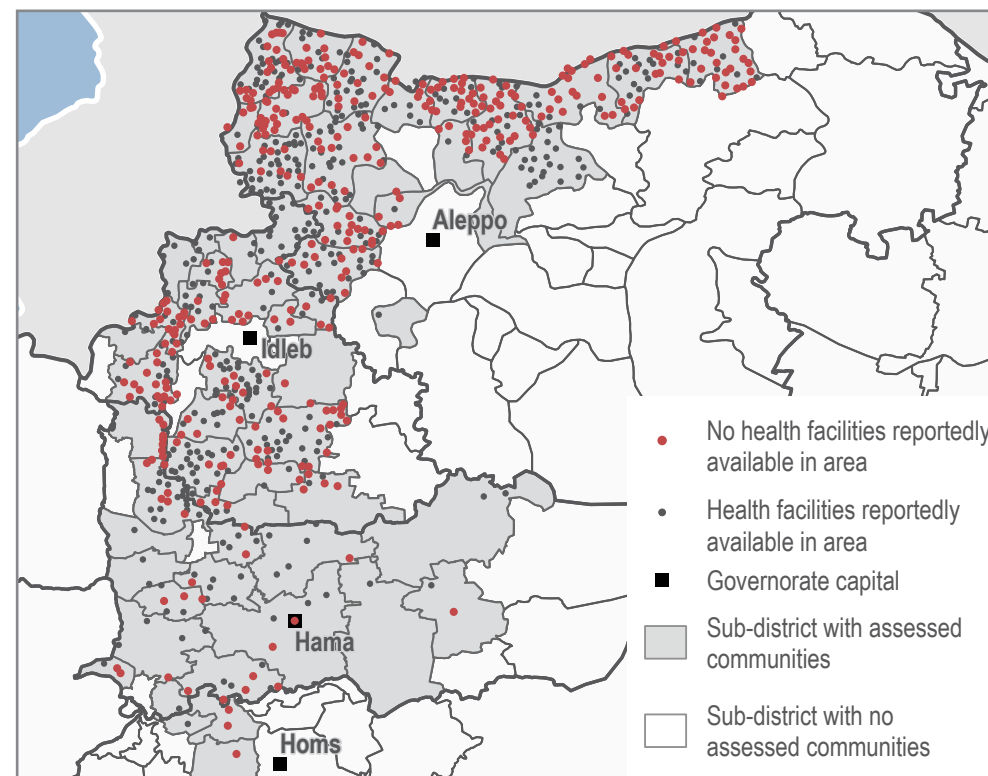
241 communities reported that residents experienced no barriers to accessing healthcare services. The most commonly reported barriers in the remaining **598 assessed communities** were:^{6,7,9}



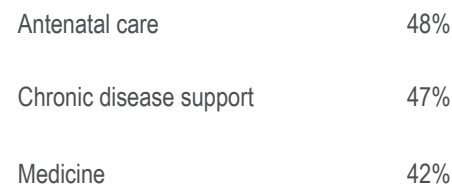
752 communities reported that residents were not using coping strategies to deal with a lack of medical services and items. The coping strategies used in the remaining **85 communities** were:^{6,7,9}



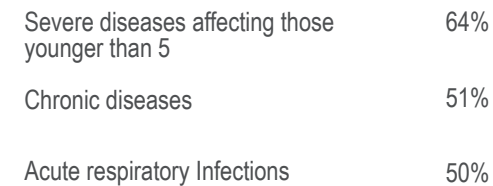
Presence of health facilities in assessed communities:



Top 3 most needed healthcare services reported:^{6,7}



Top 3 most common health problems reported:^{6,7}



Northwest Syria, November 2018

SHELTER AND NFI

5,800 SYP Regional average monthly reported rent price in SYP across assessed communities.¹

5,240 SYP Northern Syria average monthly reported rent price in SYP across assessed communities.^{1,16}

Most commonly reported shelter type for PCP households:⁷



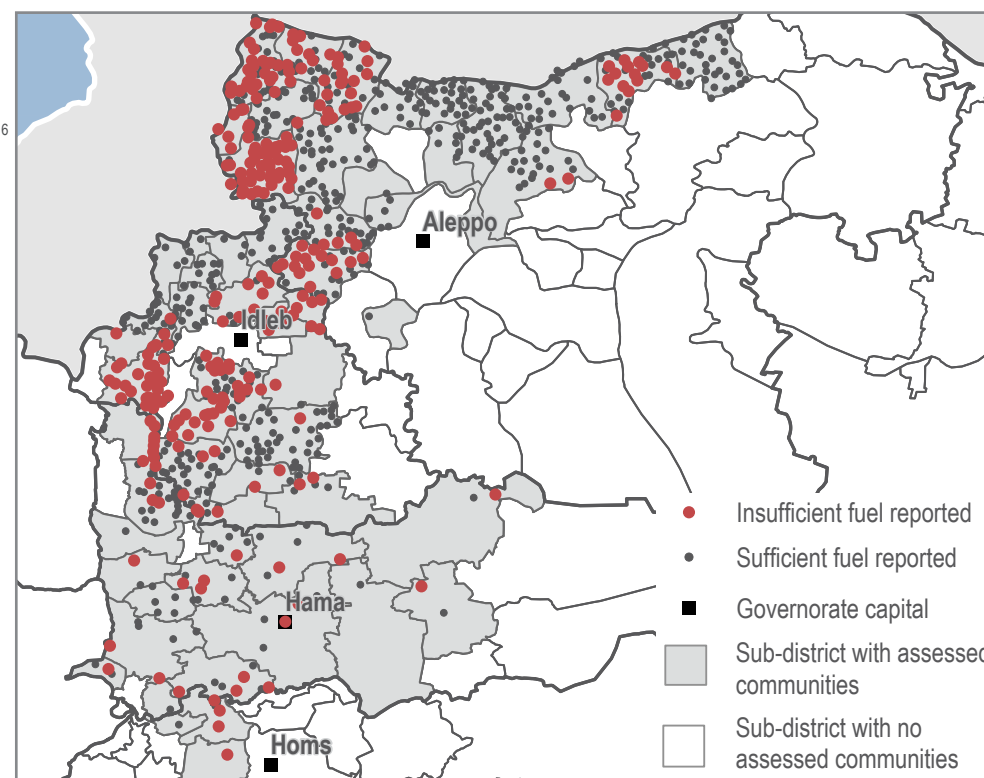
Most commonly reported shelter type for IDP households:⁷



Reported fuel prices (in SYP):^{1,2}

Fuel type (1L):	Regional average price in November:	One month change:	Six month change:
GoS petrol	423	+2%	+6%
GoS diesel	375	+7%	+6%
Manually refined petrol	273	+9%	+9%
Manually refined diesel	240	+23%	+23%
Cooking fuel	273	+9%	+9%

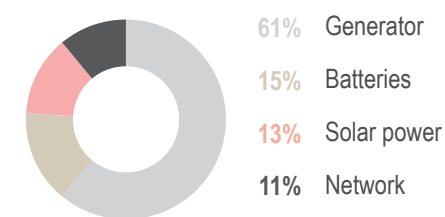
Communities that reported insufficient amounts of fuel to meet household needs:¹¹



565 communities reported no lack of fuel. Most common strategies to cope with lack of fuel in the remaining 275 assessed communities:^{6,7,9}

Cutting trees to burn	50%
Burning productive assets	48%
Burning plastics	48%
Burning furniture not in use	35%
Burning furniture in use	28%

Primary source of electricity reported:⁷



METHODOLOGY

HSOS data collection is conducted through an enumerator network in accessible locations throughout Idleb, Aleppo, Hama, Homs, Deir-ez-Zor, Ar-Raqqa, and Al-Hasakeh governorates. REACH enumerators are based inside Syria and interview Key Informants (KIs) directly in the community about which they are reporting. Where access and security constraints renders direct data collection unfeasible, some KI interviews are conducted remotely through participants identified in camps and settlements in neighbouring countries by REACH field teams. Participants contact multiple KIs in their community in Syria to collect information about their community. KIs are asked to report at the community level.

KIs generally included local council members, Syrian NGO workers, medical professionals, teachers, shop owners and farmers, among others, and were chosen based on their community-level or sector specific knowledge. In cases where KIs disagree on a certain piece of information, enumerators triangulate the data with secondary sources or select the response provided by the KI with the more relevant sector-specific background. For each question asked, confidence levels are assigned based on the KIs area of expertise and knowledge of the sector-specific situation. The confidence levels associated with each question are presented in the [final dataset](#). The full confidence matrix used to assign confidence levels is available upon request.

Findings are triangulated through secondary sources, including news monitoring and humanitarian reports. Where necessary, follow-up is conducted with enumerators and participants. Findings are indicative rather than representative, and should not be generalised across the region.

About REACH

REACH is a joint initiative of two international non-governmental organisations - ACTED and IMPACT Initiatives - and the UN Operational Satellite Applications Programme (UNOSAT). REACH aims to strengthen evidence-based decision making by aid actors through efficient data collection, management and analysis before, during and after an emergency. By doing so, REACH contributes to ensuring that communities affected by emergencies receive the support they need. All REACH activities are conducted in support to, and within the framework of, inter-agency aid coordination mechanisms. For more information, please visit our website: www.reach-initiative.org. You can contact us directly at: geneva@reach-initiative.org and follow us on Twitter: [@REACH_info](https://twitter.com/REACH_info).

ENDNOTES

KEYEVENTS AND DEVELOPMENTS

- ^a Ibrahim and Edelman (26 February 2018). Turkish-backed offensive on Afrin leaves 50,000 students out of school. Retrieved from <https://syriadirect.org>.
- ^b World Health Organisation (1 March 2018). Health Cluster Weekly Situation Report: Whole of Syria, Week 9 (23 February - 1 March 2018). Retrieved from <https://reliefweb.int>.
- ^c UN Office for the Coordination of Humanitarian Affairs. (12.09.2018). Syria: Recent Developments in North-west Syria (as of 12 Sep 2018). Retrieved from <https://reliefweb.int>.
- ^d UN High Commissioner for Refugees. (31. August 2018). Cross-Border Humanitarian Response Fact Sheet - Northwest Syria - August 2018. Retrieved from <https://reliefweb.int>.
- ^e France 24 (18 October 2018). Russia and Turkey agree to demilitarised zone around Syria's Idlib. Retrieved from <https://www.france24.com>.
- ^f U.S. News. (17 November 2018). Rebels Say Syrian Army Steps up Attacks in Idlib. Retrieved from <https://www.usnews.com>.
- ^g Reuters. (02 November 2018). Shelling kills eight in de-escalation zone around Syria's Idlib. Retrieved from <https://www.reuters.com>.
- ^h Daily Star. (19 November 2018). 25 fighters killed in clashes between pro-Turkey fighters in Afrin. Retrieved from <http://www.dailystar.com.lb>.
- ⁱ CCCM Cluster (08 January 2019). IDP Situation Monitoring Initiative (ISMI). Monthly Overview of IDP Movements in north-west Syria, November 2018. Retrieved from <https://reachresourcecentre.info>.

MAIN TEXT

- ¹ 1 USD = 434 SYP (UN operational rates of exchange as of 1 November 2018)
- ² 18 items comprise the Survival Minimum Expenditure Basket (SMEB), which represents the minimum culturally adjusted items required to support a 6-person household for a month. SMEB items: Bread, bulgur, chicken, eggs, fresh vegetables, ghee/vegetable oil, red lentils, rice, salt, sugar, tomato paste, bathing soap, laundry/dish soap, sanitary pads, toothpaste, cooking fuel, water trucking, smartphone data, float (other costs).
- ³ All information and figures reported in HSOS factsheets refer to the situation in assessed communities and cannot be generalised to other non-assessed communities of the region.

Northwest Syria, November 2018

⁴ All data presented in this product was collected, triangulated and verified based on submissions from the REACH network following the HSOS methodology. Please note that due to differences in methodology and coverage, the population and movement figures presented herein may differ from other sources. In particular, discrepancies with other available data may be the result of: differences in definitions of population sub-groups; differences in KI profiles interviewed; differences in assessed coverage dates; differences in geographic scope of assessed communities (i.e. included/excluded nearby camps and sites reported on at the community-level); and differences in overall coverage. In addition, the data herein does not claim to be comprehensive on displacements and spontaneous returns in northwest Syria, and should only be taken as indicative of the region as a whole. For more detailed information on displacements and spontaneous returns in opposition-held territories of northwest Syria, please refer to the CCCM Cluster/REACH IDP Situation Monitoring Initiative, the recent output of which is available here: [CCCM/REACH, ISMI Monthly Displacement Summary, November 2018](#).

⁵ Spontaneous returns refers to IDPs or refugees who return to their community of origin that they left due to conflict but not necessarily to their places of habitual residence (their former homes); who intend to remain in the community for an undetermined period; and who do not meet the IASC framework on durable solutions (IASC framework includes “not necessarily voluntary, safe or sustainable” elements).

⁶ Assessed using select multiple questions.

⁷ By percentage of communities reporting.

⁸ The definition of resident (pre-conflict) population (PCP), was ‘Individuals or groups of people who currently reside in their communities of origin, or communities of permanent residence prior to the Syrian conflict. This includes populations that were never displaced as well as previously displaced populations that have returned to their communities of origin’.

⁹ Not all surveys have answers for every question, in these scenarios the KI or participant will input no answer. When the dataset has no answer for a particular question the reported number of assessed communities will not add up to total number of communities assessed and percentages will be calculated based on submitted responses.

¹⁰ Extreme food-based strategies: eating food waste; eating non-edible plants and spending days without eating.

¹¹ Based on KI perception of sufficiency.

¹² Bread, rice, lentils, sugar, and cooking oil are considered core food items used in food baskets across Syria. For further information on all SMEB items please see the [Syria Market Monitoring report](#).

¹³ Reported numbers indicate the number of communities with functioning primary and secondary

education facilities during the data collection period. It is important to note that simply having a functioning facility is not indicative of students being able to attend said facility. In addition, in some cases KIs reported that children attend schools in a neighbouring community.

¹⁴ Assessed HSOS medical items; anti-anxiety medication, contraception, clean bandages, blood transfusion bags, diabetes medicine, anaesthetics, blood pressure medicine, antibiotics, burn treatment.

¹⁵ This information was derived from medical professionals (KIs). The number of total communities refers to all communities that had a KI as medical professional available.

¹⁶ Includes HSOS data for Idleb, Aleppo, Hama, Homs, Deir-ez-Zor, Ar-Raqqa and Al-Hasakeh governorates.