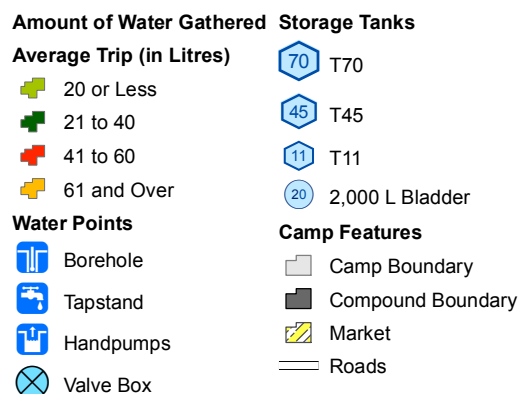
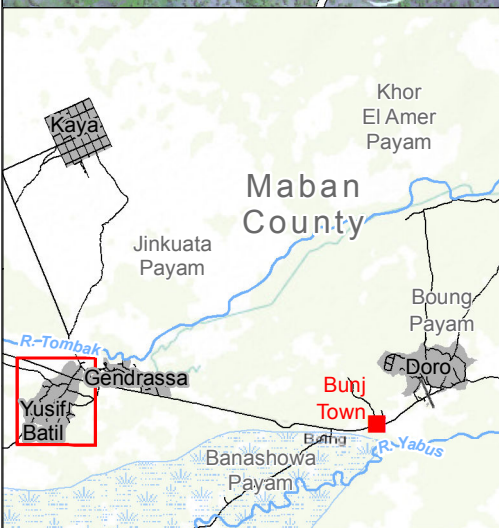
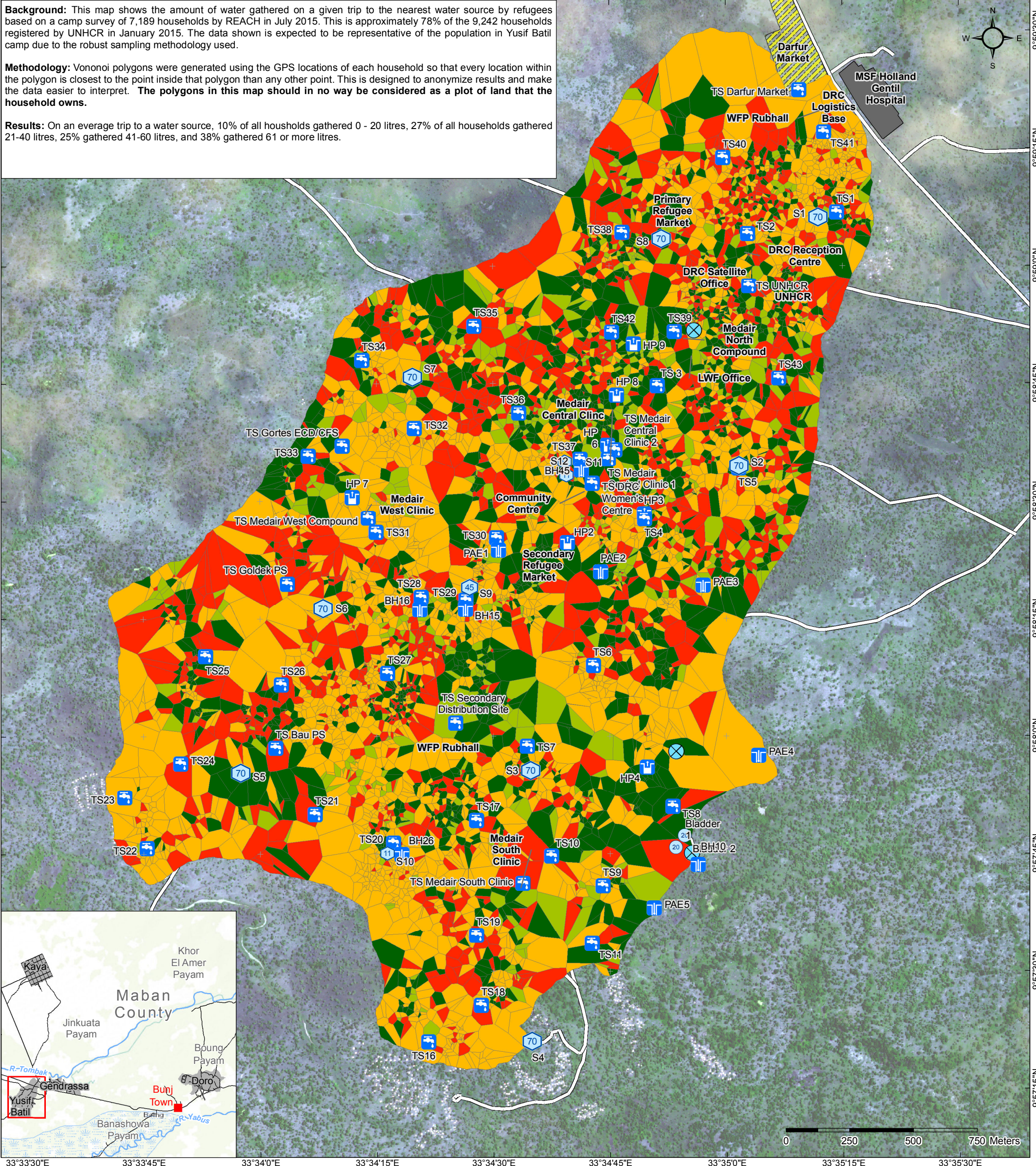


Background: This map shows the amount of water gathered on a given trip to the nearest water source by refugees based on a camp survey of 7,189 households by REACH in July 2015. This is approximately 78% of the 9,242 households registered by UNHCR in January 2015. The data shown is expected to be representative of the population in Yusif Batil camp due to the robust sampling methodology used.

Methodology: Vononoi polygons were generated using the GPS locations of each household so that every location within the polygon is closest to the point inside that polygon than any other point. This is designed to anonymize results and make the data easier to interpret. **The polygons in this map should in no way be considered as a plot of land that the household owns.**

Results: On an average trip to a water source, 10% of all households gathered 0 - 20 litres, 27% of all households gathered 21-40 litres, 25% gathered 41-60 litres, and 38% gathered 61 or more litres.



Data sources: roads: PAE (2015); Water Points: Medair (2015); satellite imagery: WV-2 satellite (2013); administrative units, hydrology: OCHA COD; Basemap: Esri; All other features: REACH (2015).

Coordinate System: GCS WGS 1984
Contact: reach.mapping@impact-initiatives.org

Note: Data, designations and boundaries contained on this map are not warranted to be error-free and do not imply acceptance by the REACH partners, associates, donors or any other stakeholder mentioned on this map.

File: REACH_SSD_Map_YusifBatil_CAMP_WaterGathered_07JUL2015_A3