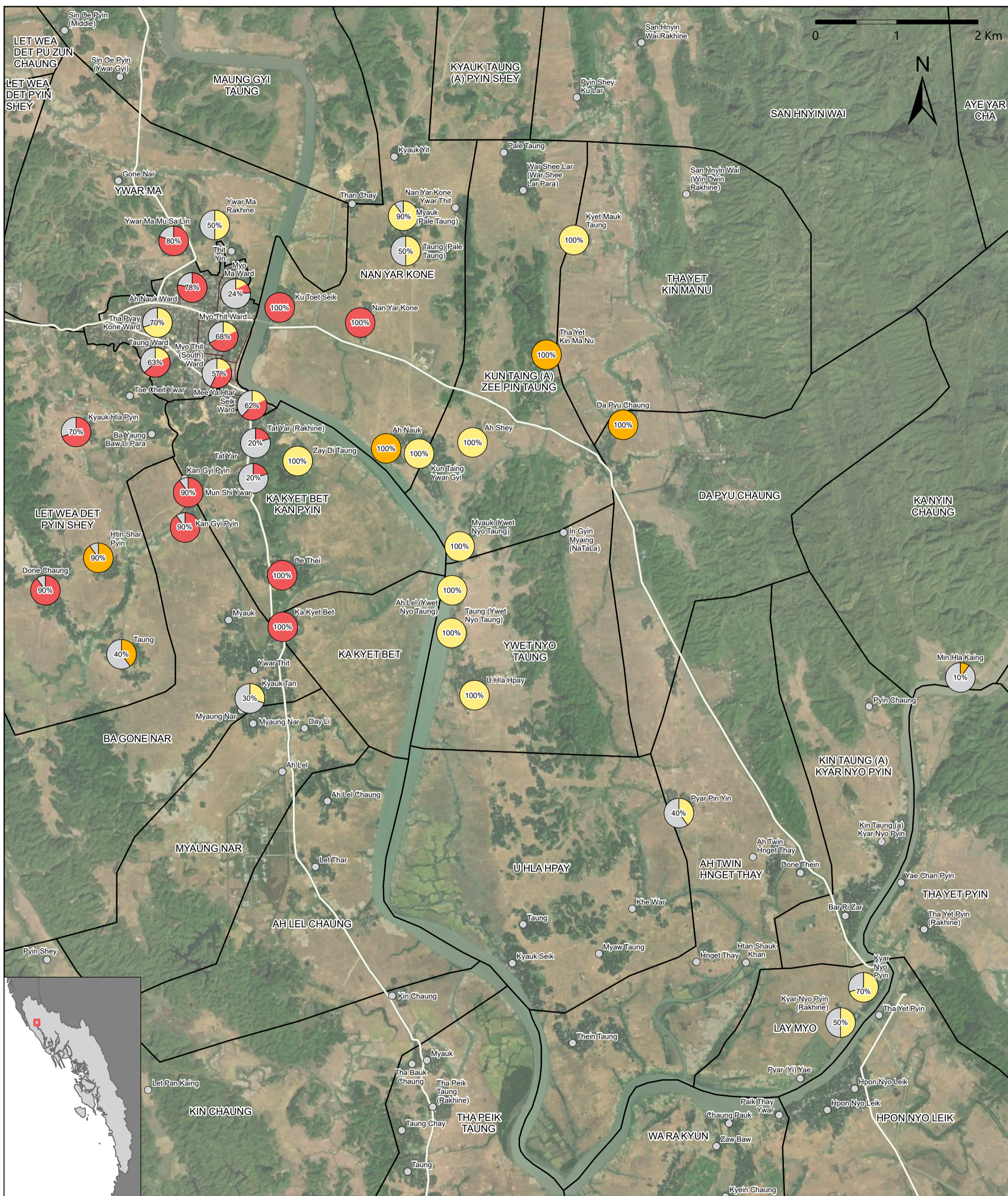


Buthidaung and Surrounding Areas, Rakhine State, Myanmar

Proportion of shelters destroyed by village/ward, March-May 2024

For humanitarian purposes only
Production date : 26 June 2024



- Legend**
- ⊙ Pie chart showing proportion of damage in village
 - Village damaged in 16-31 May 2024
 - Village damaged in 1-15 May 2024
 - Village damaged in March-April 2024
 - Village not damaged

- ▭ Ward boundaries
- ▭ Village tract boundaries
- ▬ Main road

Data sources: Myanmar Information Management Unit (MIMU)

REACH conducted a rapid damage assessment of the residential area using a combination of WorldView-2 (WV2) satellite imagery from 12 December 2022, WorldView-1 (WV1) satellite images acquired on May 30, 2024, and PlanetScope imagery from April 10, April 15, April 16, April 24, May 14 and May 24, 2024.

Note: Data, designations and boundaries contained on this map are not warranted to be error-free and do not imply acceptance by REACH partners, associates or donors mentioned on this map.