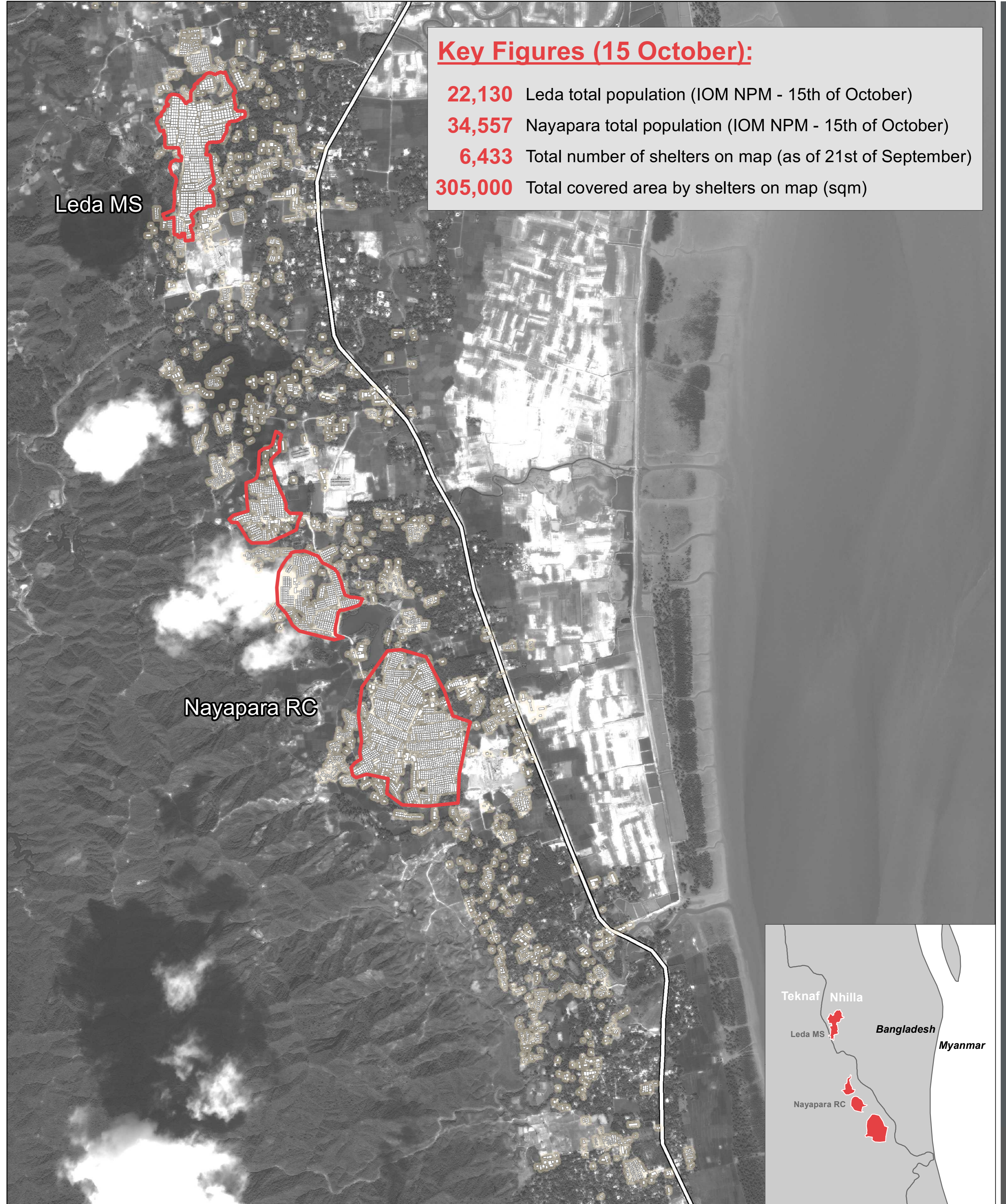


**Key Figures (21 September):**

- 21,000** Leda total population (IOM NPM - 18th of September)
- 34,230** Nayapara total population (IOM NPM - 19th of September)
- 5,062** Total number of shelters on map (as of 21st of September)
- 245,000** Total covered area by shelters on map (sqm)

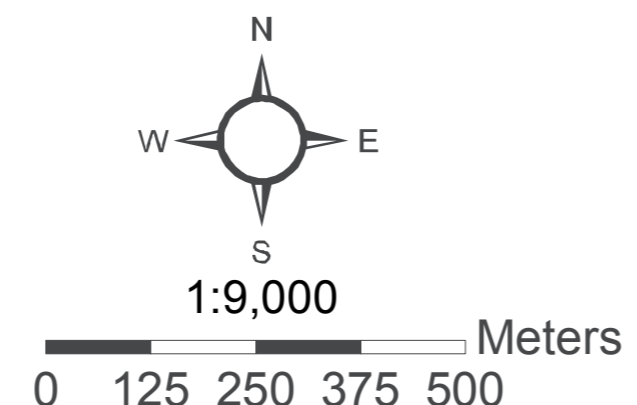


**Key Figures (15 October):**

- 22,130** Leda total population (IOM NPM - 15th of October)
- 34,557** Nayapara total population (IOM NPM - 15th of October)
- 6,433** Total number of shelters on map (as of 21st of September)
- 305,000** Total covered area by shelters on map (sqm)



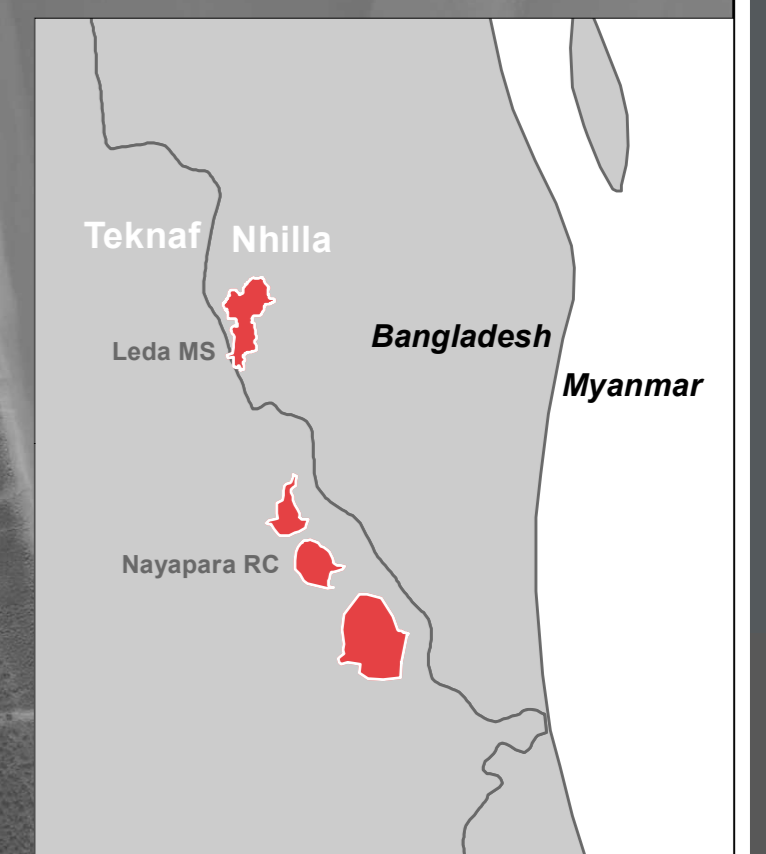
- Settlement Zone
- Shelter Footprints
- Settled Area (approximate)
- Main Road



*Note: Background image and shelter count on the left are from 21st of September and background image and shelter count on the right are from 15th of October.*

Disclaimer: Data, designations and boundaries contained on this map are not warranted to be error-free and do not imply acceptance by the REACH partners, associates or donors mentioned on this map.

Data Sources:  
Site Boundaries - ISCG  
Shelter Analysis (September and October 2017) - REACH / UNOSAT  
Satellite Imagery: WorldView -1 from 21 September 2017, Pleiades SPOT 6/7 from 15 October 2017.  
Copyright: ©2017 DigitalGlobe ©Airbus DS Geo  
Source: US Department of State, Humanitarian Information Unit, NextView License.  
Coordinate System: WGS 1984 UTM Zone 46N  
Projection: Transverse Mercator  
File: reach\_bgd\_map\_LedaNayapara\_shelter\_count\_SeptOct2017\_a1  
Contact: reach.mapping@impact-initiatives.org



In support of the **WASH Sector Cox's Bazar**

In partnership with **USAID** and **UNOSAT**

Funded by **USAID** and **UNOSAT**

FROM THE AMERICAN PEOPLE Humanitarian Aid and Civil Protection