

A man in a white t-shirt with 'REACH' and 'Informing more effective humanitarian action' on the back is seen from behind, looking towards a refugee camp. The camp consists of several long, narrow tents with white walls and yellow roofs. In the background, there are rolling hills under a clear sky. A few people are visible near the tents.

Multisectoral Needs Assessment (MSNA) 2025

What the data reveals about humanitarian needs

Coordination structure

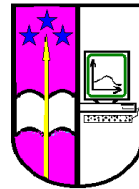
Funded by:



Avec le soutien de :



In partnership with:



With the support of:



REACH Informing more effective humanitarian action



Assessment Framework



Objectives of the assessment

General objective

Provide the humanitarian community with data enabling the identification of the nature and severity of the multi-sector humanitarian needs of populations in the provinces of Ituri, North Kivu and South Kivu in the DRC, by geographical area, in order to inform the 2026 Humanitarian Programming Cycle (HPC).

Specific objectives

To better understand the living conditions of populations affected by the protracted humanitarian crisis:

1. To provide the humanitarian community with representative data to inform the sectoral and intersectoral severity of needs, as well as the level of vulnerability of populations.
2. To develop hypotheses about potential factors that could explain the severity of needs between the different areas assessed.

Methodology

Face-to-face surveys - accessible areas

Representative results: 104 surveys per HZ (90% confidence level/10% margin of error, 5% buffer).

- July 20 to August 31, 2025
- **72 HZ evaluated, including 75% Ituri, 70% North Kivu, and 61% South Kivu**
- **11** territories fully covered face-to-face
- Random cluster sampling based on WorldPop 2024 data
- 400 surveys deleted to ensure data quality

Remote surveys – inaccessible areas

Indicative results: 10% of localities per HZ with 3 key informants

- July 10 to September 12, 2025
- **32 HZ** evaluated
- **939** inaccessible localities evaluated
- **2 312** key informant surveys
- Purposive sampling

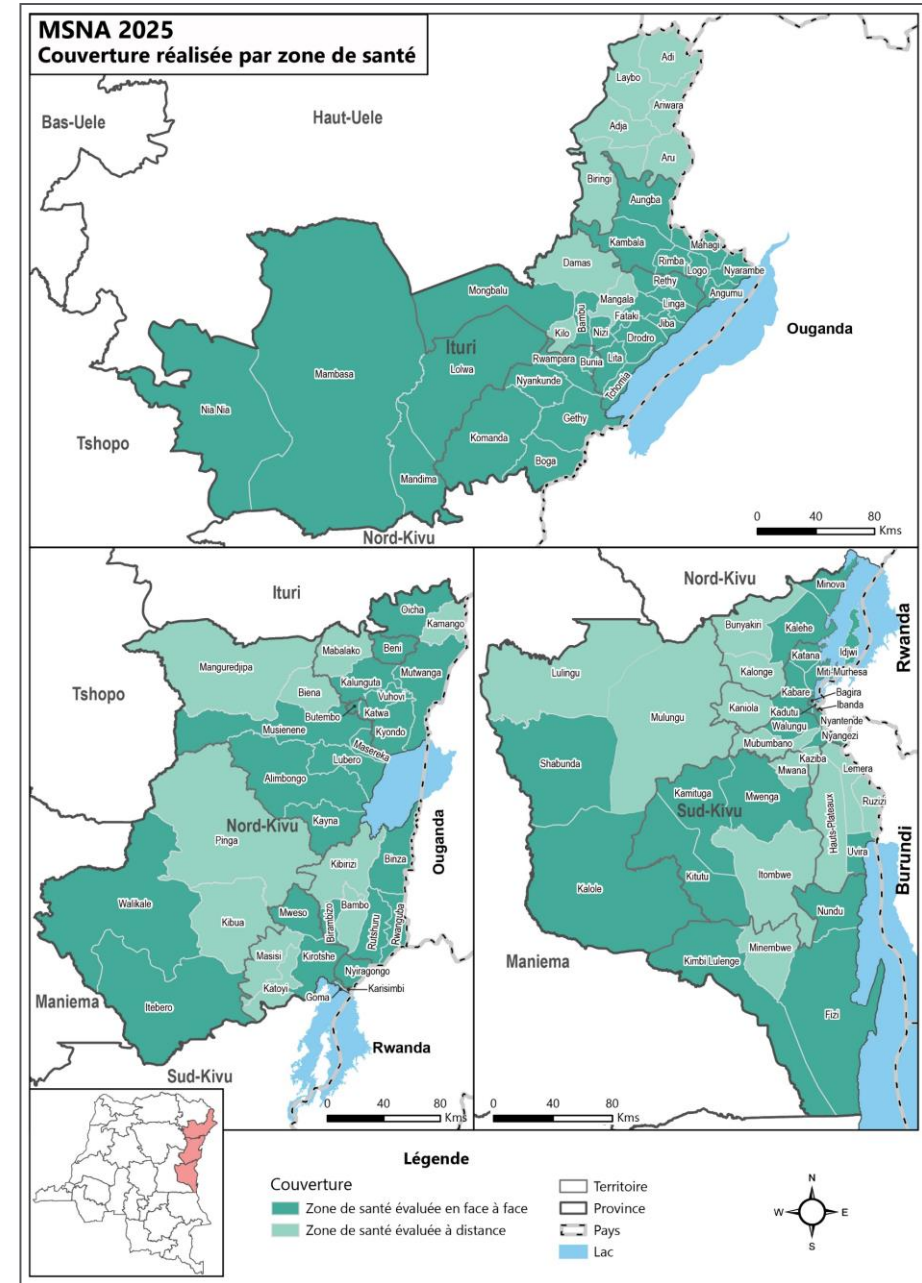
Scope of the assessment

ITURI, NORD-KIVU and SUD-KIVU

104 Health Zones (HZ)

7 488 Household surveys
(63% of women, 23% of IDPs, 10% of Returnees)

2 312 Key informant surveys



Our analysis method

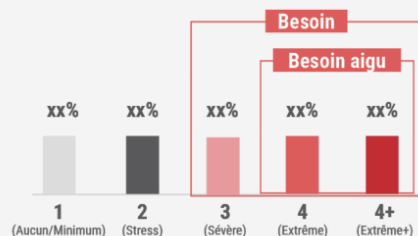
IMPACT Initiatives Global has developed a **Multisectoral Needs Index** (MSNI) that measures the **multisectoral needs of households** across **six sectors** (SECAL, health, education, WASH, shelter, protection) on a **severity scale** of 1 to 4+.

- Provides a profile of the needs of each household surveyed.
- Allows crises to be compared (common analytical framework).
- The MSNI analysis is entirely based on the MSNA dataset with no additional secondary sources and differs from the HNRP analysis

01

Proportion of households by severity phase

POURCENTAGE DE MÉNAGES PAR PHASE DE SÉVÉRITÉ



02

Proportion of households in need, by sector

POURCENTAGE DE MÉNAGES DANS LE BESOIN PAR SECTEUR

Sécurité alimentaire	xx%
Éducation	xx%
Santé	xx%
Protection	xx%
Abris	xx%
EHA	xx%

03

Most common combinations of needs

COMBINAISON LA PLUS COURANTE DES BESOINS SECTORIELS

Au total (xx%)



Groupe de population 1	xx%
Groupe de population 2	xx%
Groupe de population 3	xx%
Groupe de population 4	xx%



Key messages

Key messages

HZ with extreme needs affected by the conflict



Increased needs in Ituri – driven by **severe protection needs** linked to **insecurity** – **impacting access to resources**. **Needs are concurrent in the most affected HZ** in protection, food security, WASH, and shelter sectors.

Urgent public health needs



A **lack of access to basic health and WASH infrastructures**, with **unmet health needs** particularly in **South Kivu**, water needs mainly in North Kivu and Ituri, and hygiene needs in South Kivu. However, **assistance in these sectors remains low** despite the needs and preferences of households for these types of assistance.

Structural needs coupled with protection risks



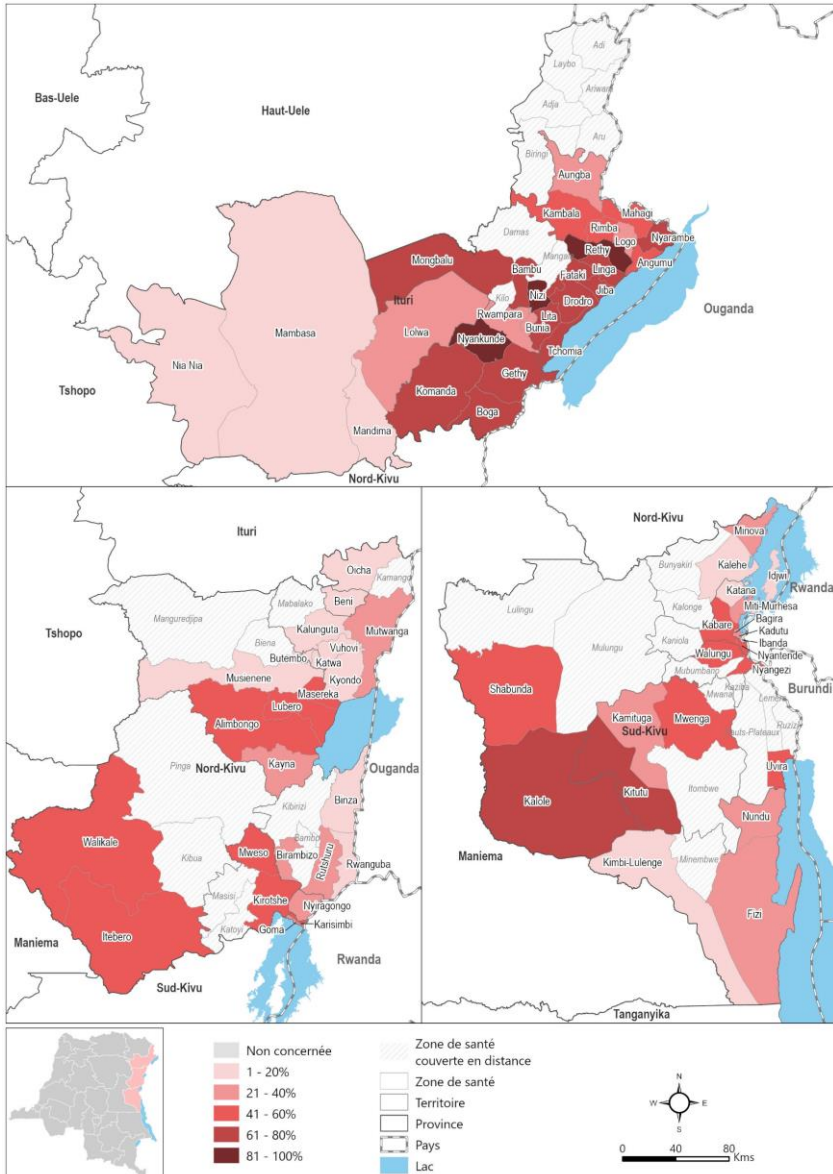
Economic difficulties remain a major factor contributing to **food insecurity** and **difficulties in accessing education** – coupled with **child protection issues in South Kivu** and conflicts in North Kivu, impacting access to education. Shelter needs are also present, and **shelter support** is a **preferred type of assistance in South Kivu**.



HZ with the most extreme needs

HZ with the greatest identified needs

Map | % of households with **extreme multisectoral needs***



- **Nizi, Nyankunde, and Rethy** were the HZ with the highest number of households with **extreme to very extreme needs**.
- Needs in the areas of **protection and WASH** are the **most extreme needs** of households.
- The 8 HZ with the most extreme needs (**Nizi, Nyankunde, Rethy, Boga, Fataki, Drodoro, Gethy, Tchomia**) all had **protection needs** (with the exception of Drodoro) with **concurrent needs in food security, WASH, or shelter**.

37%

Of households with **extreme to very extreme needs (4-4+)**

(ITR : 51%; SK : 36% and NK: 28%)

* The scale used for this map will be the same used for all the maps presented below.

Conflict-related shocks – primarily in Ituri

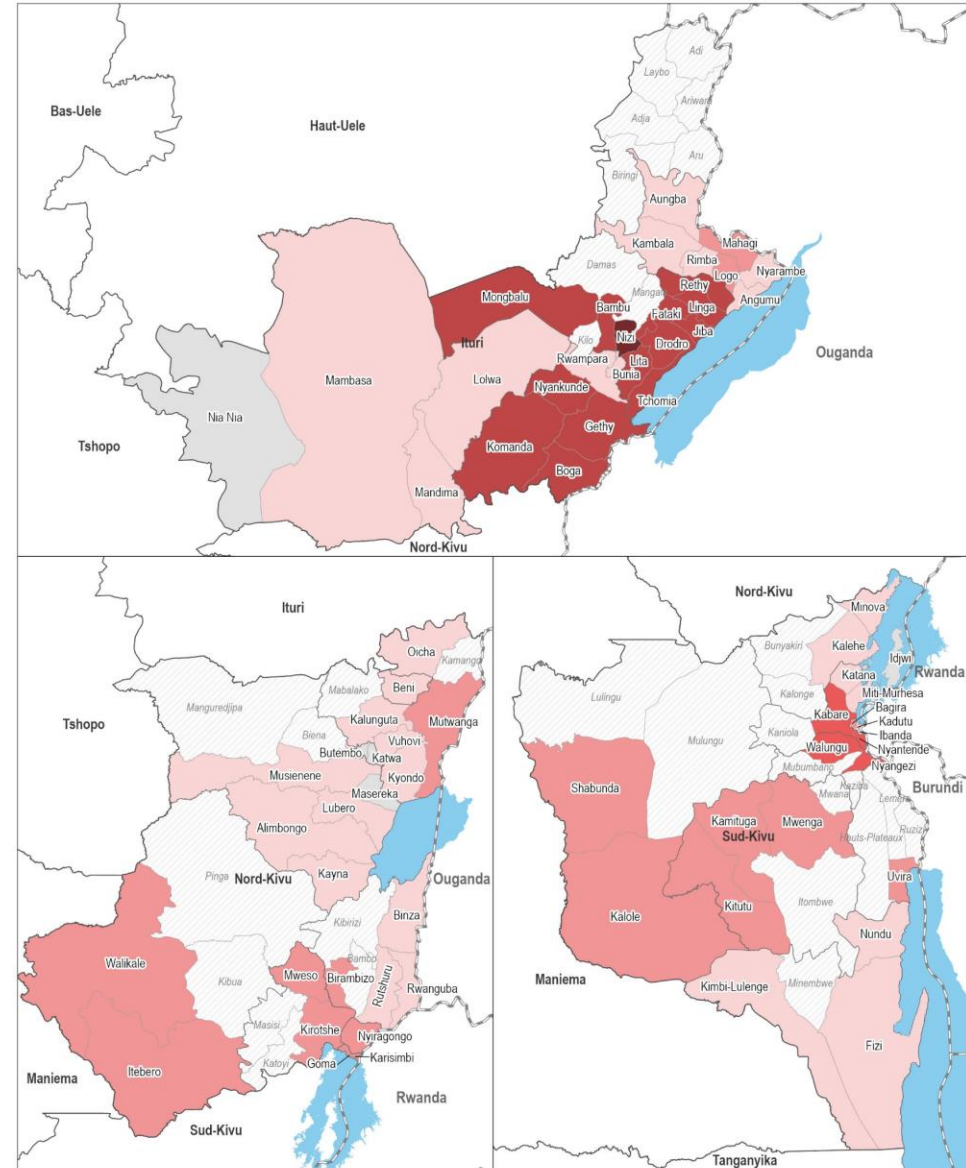
Map | % of households with **severe protection needs**



Of households with **severe protection needs in Ituri** (followed by 21% in South Kivu and 12% in North Kivu) – mainly in the HZ of **Nizi** (84%), **Boga** (75%), **Komanda** (74%), **Nyankunde** (71%), and **Fataki** (71%)

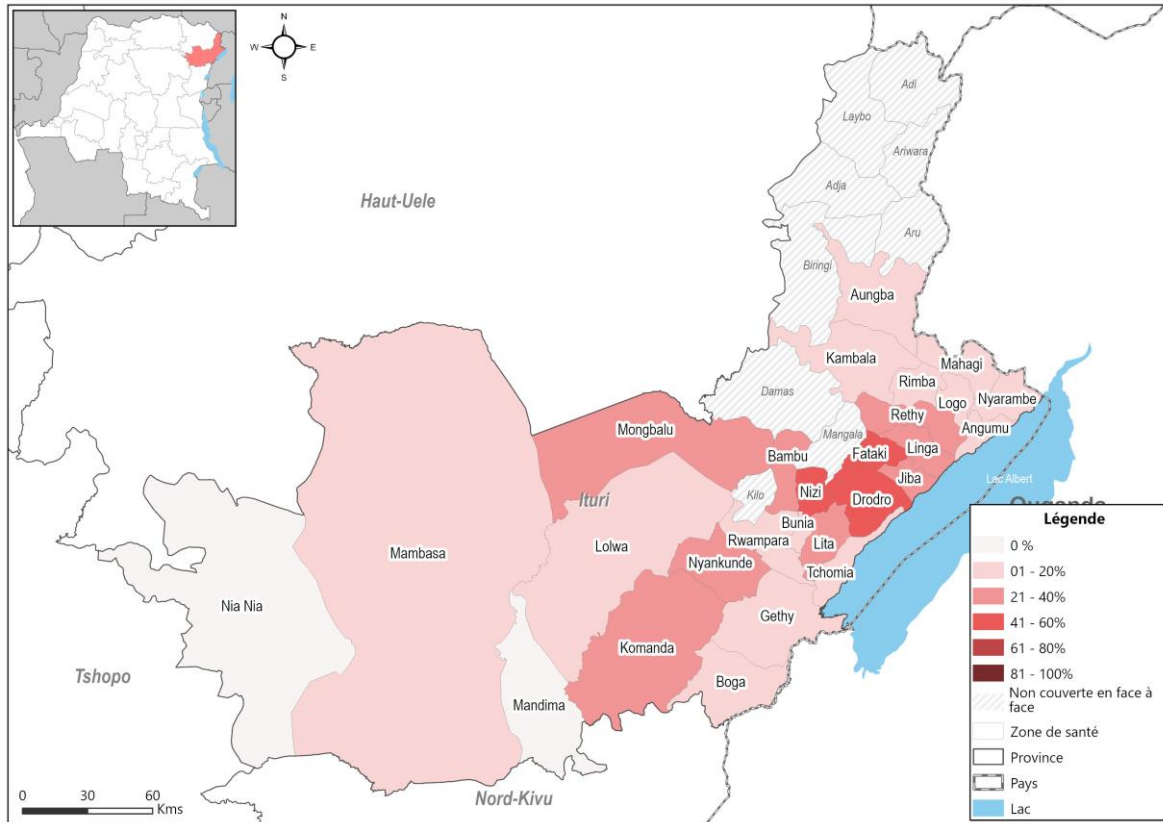
Households affected by armed or interethnic conflicts with or without displacement, Top 5 ZS :

Nizi (ITR)	83%
Fataki (ITR)	72%
Drodro (ITR)	58%
Lita (ITR)	55%
Lolwa (ITR)	54%



Security issues in Ituri

Map | % of households in Ituri reporting that at least one household member felt concerned about their safety several times due to violence in the community*



1/2

Of households in the HZ of **Nizi** (55%), **Drodro** (48%) and **Fataki** (44%)

1/3

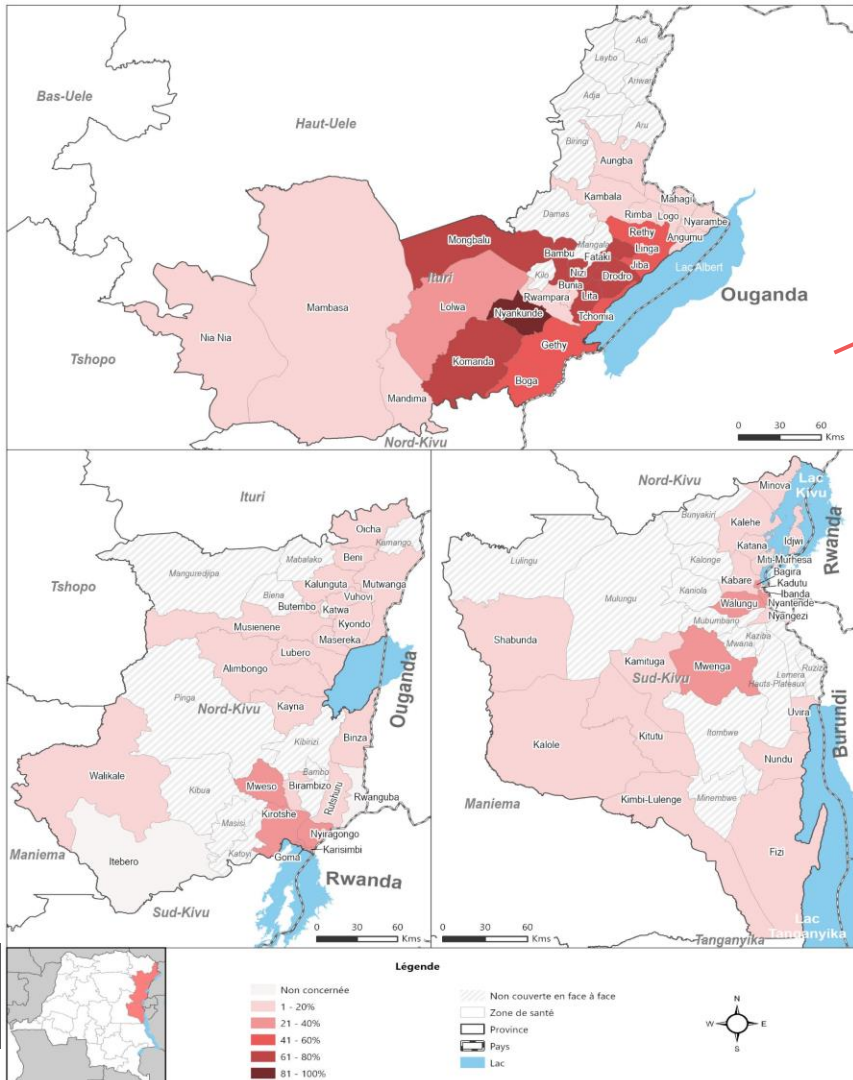
Of households in these same HZ reported that at least one member of the household **had been forced to flee their home several times***, Nizi (31%), Drodro (30%) and Fataki (31%)

1/4

Of households in these same HZ reported that at least one member of the household **had suffered acts of persecution or discrimination***, including being **denied access to basic services** on several occasions, Nizi (37%), Drodro (24%) and Fataki (26%)

Safety concerns for women

Map | % of households reporting that **at least one woman in the household felt unsafe walking in their community several times***



Mainly in the HZ of **Nyankunde** (83%), **Nizi** (79%), **Drodro** (77%), **Fataki** (79%) and **Komanda** (77%)

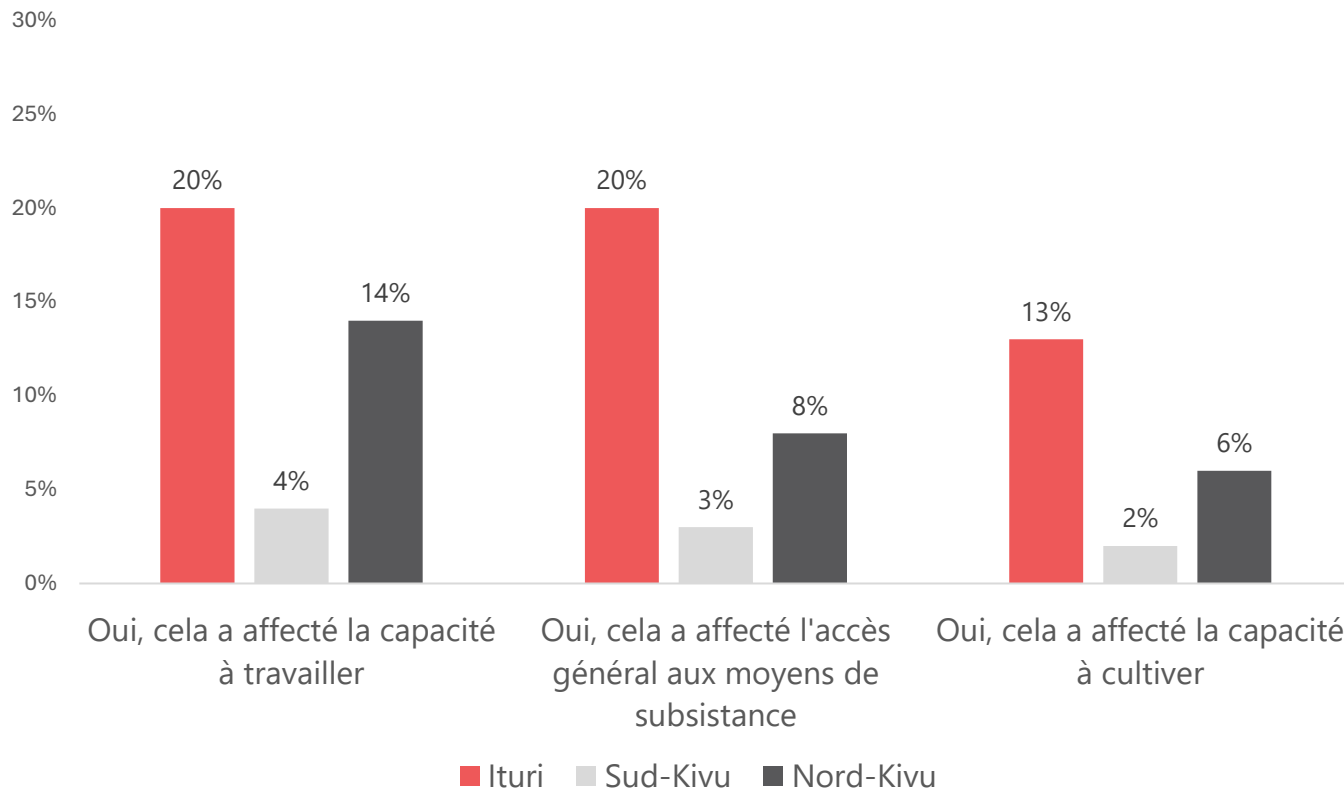
➤ Similar proportions in these same HZ where at least one **woman in the household avoided areas in the community several times**

*HZ of **Nyankunde** (72%), **Nizi** (77%) and **Drodro** (70%) and of **Fataki** (74%) and **Komanda** (68%)*

* During the three months preceding data collection

Insecurity impacting access to resources

Map | Percentage of households reporting **difficulties accessing resources, carrying out activities, or making choices to meet their needs** due to the presence of protection threats within the community, by type of difficulty:



- HZ of **Bambu** (41%), **Fataki** (38%) and **Jiba** (38%) in **Ituri** stood out for the **difficulty to cultivate**
- HZ of **Nizi** (62%), **Komanda** (53%) and **Boga** (48%) in **Ituri** for the **difficulty of working**
- HZ of **Nizi** (53%), **Bambu** (51%) and **Mongbalu** (49%) for the **difficulty of accessing livelihoods**



Urgent public health needs

Urgent health needs – mainly in South-Kivu

 **49%**

Of households in **South Kivu** with **unmet health needs***— mainly in the health zones of **Nyantende** (60%), **Kabare** (60%) and **Nyangezi** (60%)

Lack of access to healthcare was identified as a **main challenge** primarily in **South Kivu** (33%), ahead of NK et ITR (23%).

➤ Mainly in **Fizi** (60%), **Nundu** (60%) and **Kimbi Lulenge** (59%)

Health-related shocks in South Kivu

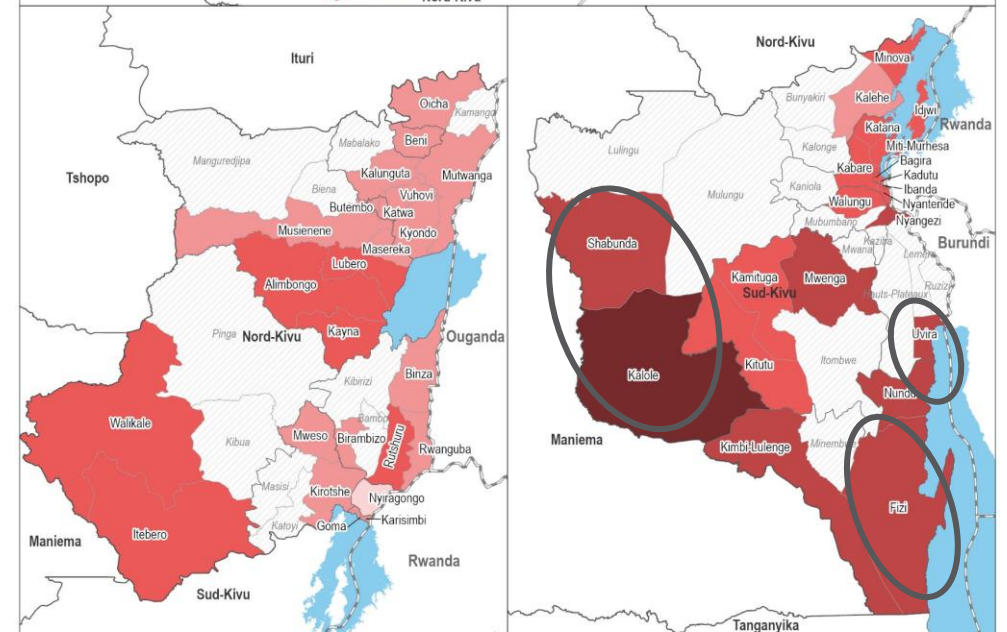
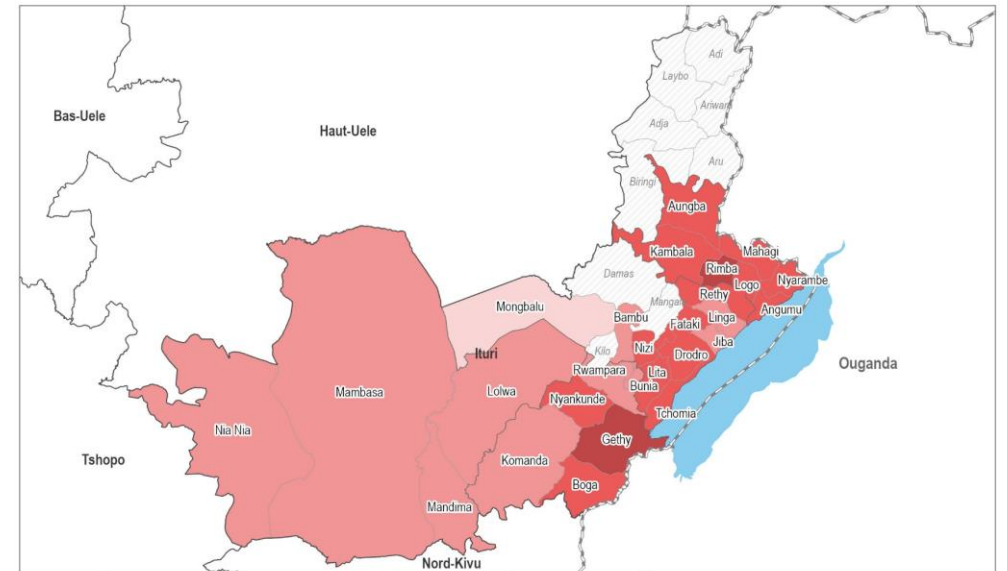
Serious illness of one or more members of the household:

Sud-Kivu	50%
Ituri	34%
Nord-Kivu	13%

Death of a working member of the household:

Sud-Kivu	42%
Ituri	26%
Nord-Kivu	18%

Map | % of households with **health needs**



*The percentages shown here are calculated based on all households that reported having unmet health needs.

Difficulties accessing healthcare facilities – North-Kivu



More than **1/3**

Households reported **difficulties accessing health centers** due to **security threats within the community*** in **Walikale** (NK) (41%), **Itebero** (NK) (38%), **Kamituga** (SK) (38%) and **Nizi** (ITR) (38%)

The highest proportion of households facing movement restrictions was reported in **Nord-Kivu** – particularly in the HZ of **Mweso** (47%), and of **Birambizo** (42%) followed by **Kirotshe** (38%).

* During the three months preceding data collection



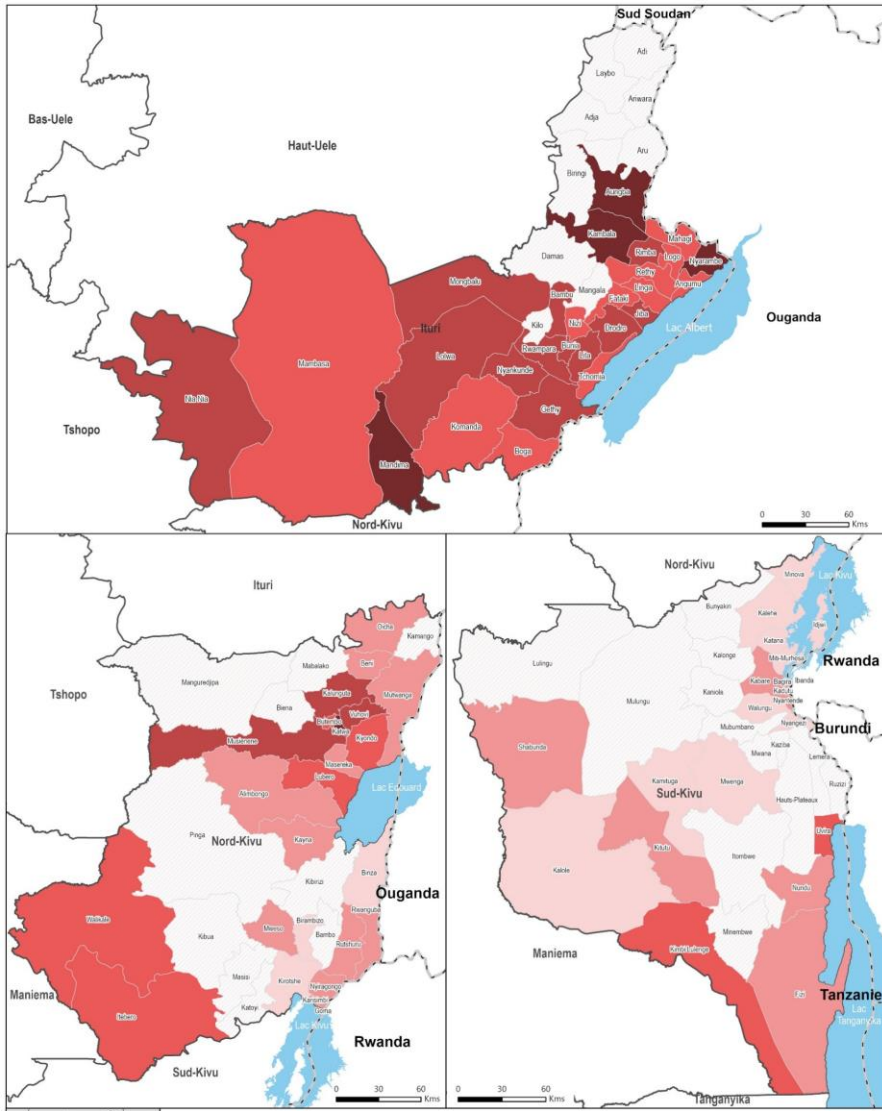
Nord-Kivu where the **use of health centers was lowest** (44%) and that of **traditional healers was highest** (10%) for children under 5 – notably **41%** reported by households in **Nyiragongo****

Nord-Kivu where the percentage of children under 5 who had **received deworming treatment** (41%) and **vitamin A supplements** (40%) in the last 6 months **was the lowest**.

**This is a subset

Widespread difficulties in accessing drinking water

Map | **Lack of access to sufficient drinking water** as the main challenge reported



1/2

Households spent **more than 1 hour collecting drinking water** (NK: 51%; ITR: 47% and SK: 45%) – Mainly in **Binza** (91%); **Nundu** (75%) and **Itebero** (75%)



49%

Households in the Kalole HZ **use surface water as their main source of drinking water** (followed by **Nyarambe** (43%) and **Shabunda** (30%)).

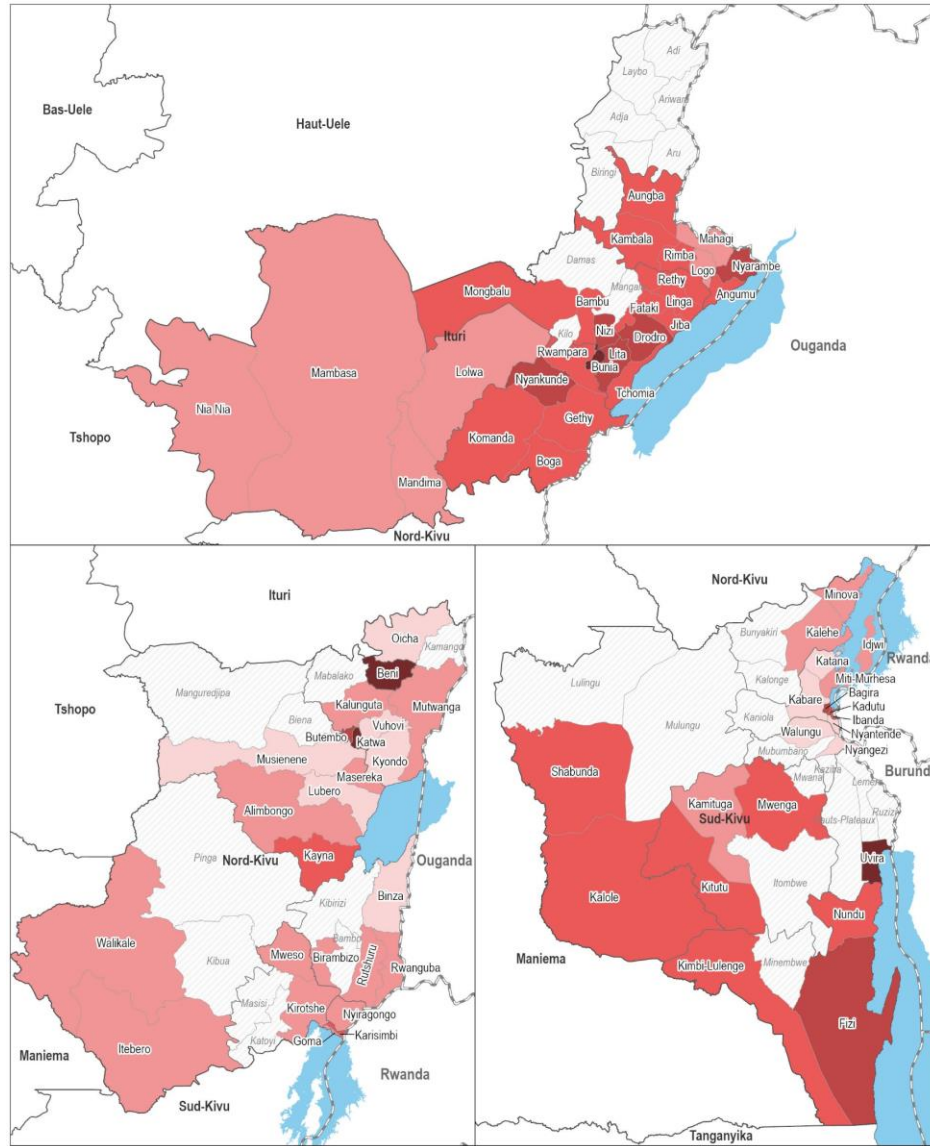
40%

Of households in **Ituri** report **unimproved sources as their main sources of drinking water** – **Bambu**: 88%; **Gethy**: 73%; **Kambala**: 73% and **Lolwa**: 73%.

- Of households report **not having access to as much drinking water as they would have liked** in **Kayna** (14%) – followed by **Katwa** (11%) and **Kamituga** (10%).

Difficulties in accessing sanitation facilities

Map | % of households with WASH needs



Problems with sanitation and hygiene



16%

Of households practicing **open defecation in Ituri** – 28% in **Tchomia**; 25% in **Drodro** and 24% in **Rwampara**

89%

Of households **report sharing their sanitation facilities** with other households in **Kimbi Lulenge**, followed by **Fizi** (78%) and **Angumu** (74%).



42%

Of households report **not having handwashing facilities** in **Ituri** and **South Kivu** (compared to 32% in North Kivu).

Particularly in **Nundu** (86%), **Waikale** (86%), **Fizi** (83%), and **Kimbi Lulenge** (82%)

Low assistance in healthcare and drinking water

Preferred

Ituri, Nord-Kivu et Sud-Kivu



Food



Healthcare



Drinking water

The main types of assistance received were:

- Food
- Employment support

43%

Of households in **Ituri** report support in the **form of drinking water** as their **preferred type of support** (30% NK and 24% SK).

8%

Only of **assistance received in drinking water** in **Ituri** (3% NK and 1% SK)

Healthcare support was the **preferred type of support** for almost **half of households** – (44% ITR; 43% NK and 45% SK)

- Healthcare assistance **received in Ituri** (24%) as the second most common type of assistance received – **ahead of other provinces**
- Only **8% of healthcare assistance received in North Kivu** and **6% in South Kivu**



Structural needs and protection risks

Contributing factors



Over 83%

Of households in Ituri reported the **high cost of items on the markets** as the **main difficulty in purchasing goods**, followed by SK (78%).

*All households in the **Géthy, Mwenga, Nyantende, Walungu, and Nyiragongo** health zones.*

Economic barriers

- **Lack of money/savings** reported—mainly in **Ituri** (35%) and **South Kivu** (30%)—in the health zones of **Mwenga** (97%), **Kamituga** (87%), and **Tchomia** (72%)
- **Lack of means of payment** reported as the second main difficulty in purchasing – **particularly in Ituri (83%) and South Kivu (78%)** – **100%** in the health zones of **Walungu, Nyantende, Nyangezi, and Mwenga**
- **Highest proportion** of households **affected by rising food prices** in the health zones of **Oicha** (62%), **Aungba** (29%) and **Lubero** (28%)

Food security Issues

 **59%**

Of households had **food security needs in Ituri** – mainly in **Rimba** (88%), **Angumu** (84%), and **Anguba** (84%).

14% of households had **severe food security needs in Nyarambe**, followed by **Kambala** (13%) and **Rimba** (13%).

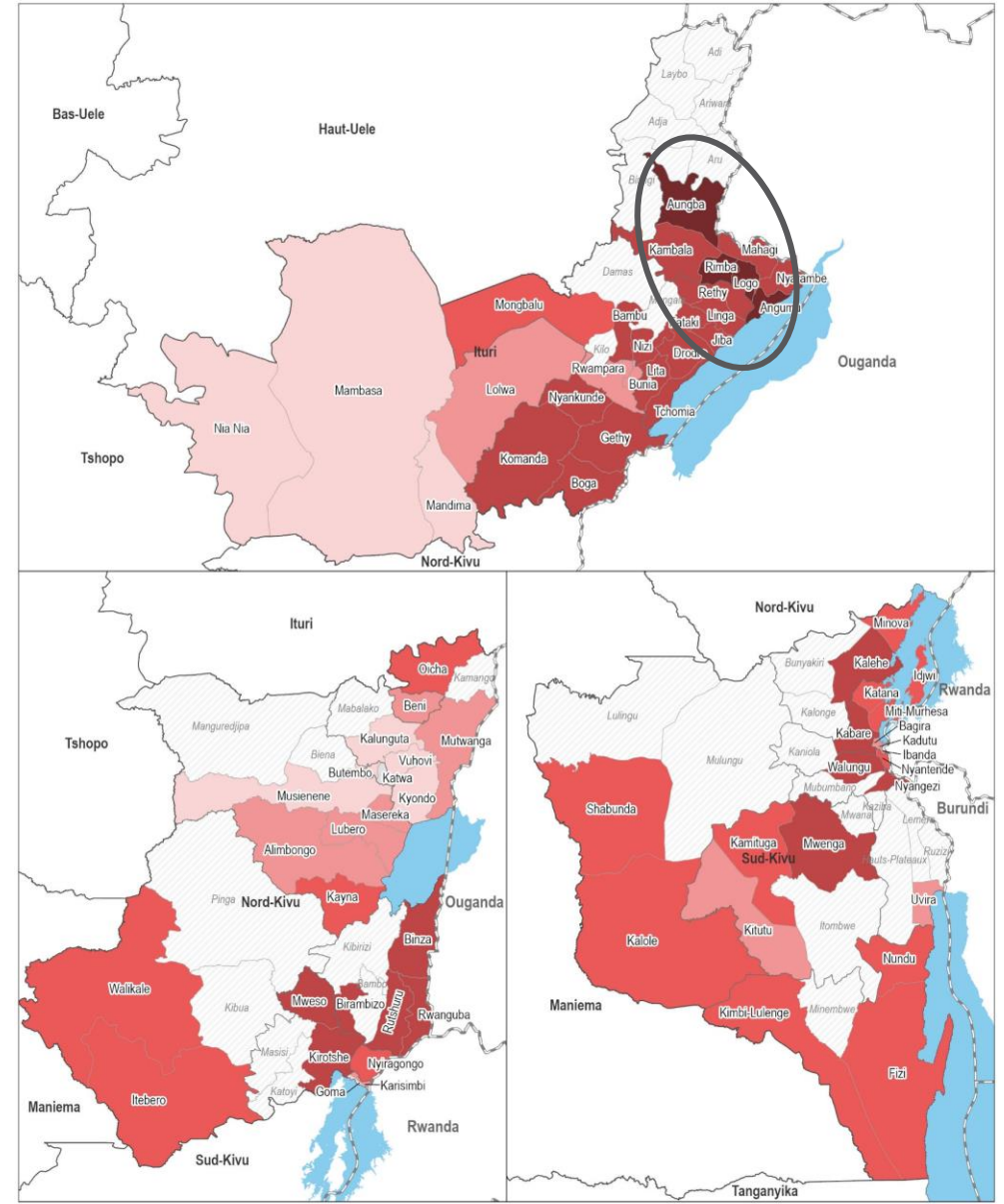
Ituri where the **borderline 55%** and **poor 17%** food consumption scores were the most significant.

Severe Household Hunger Scale, top 5 HZ :

Nyarambe	16%
Rimba	13%
Kambala	13%
Angumu	13%
Mahagi	10%

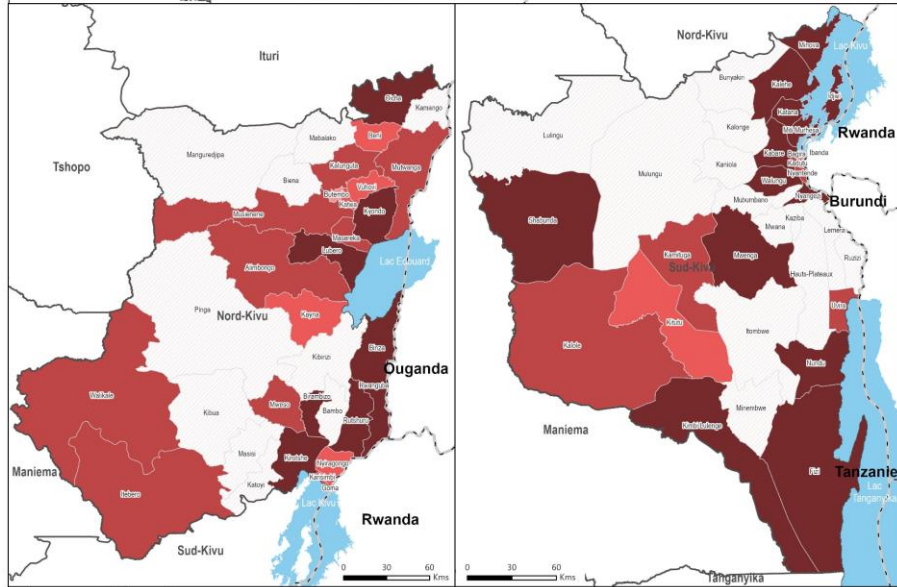
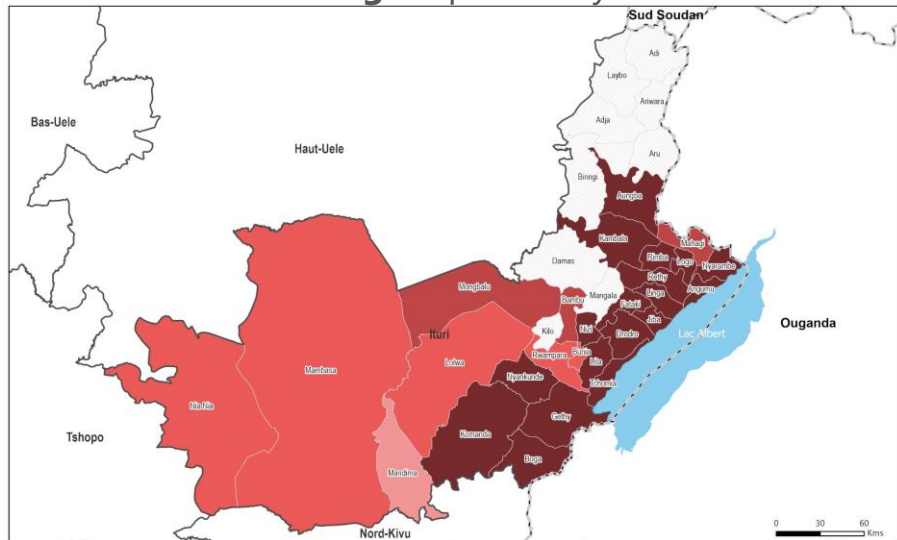
Ituri

Map | % of households with Food Security needs



Coping strategies in North and South Kivu

Map | **Lack of access to sufficient quantity or quality of food** as the **main challenge** reported by households



High reduced coping strategy index, **top 5 HZ**

- Mwenga (SK) **68%**
- Oicha (NK) **66%**
- Kalehe (SK) **64%**
- Minova (SK) **64%**
- Katana (SK) **63%**

Sud-Kivu

Emergency livelihood coping strategy index*, **top 3 HZ**

- Binza (NK) **45%**
- Itebero (NK) **43%**
- Aungumu (ITR) **42%**

Nord-Kivu

Food gathering was reported as the **main source of food** in the HZs of **South Kivu** in **Kitutu** (34%), **Idjiwi** (22%), and **Shabunda** (20%).

*beg, sell one's house, land, or last female animals

Precarious shelter types in North Kivu and Ituri

50%

Of households had **shelter needs in Nord-Kivu** – followed by Ituri (48%) and South Kivu (40%)

13%

Of households lived in **makeshift shelters in Ituri** (NK: 11% *et* SK: 4%)

- 64% in **Gethy** (ITR); 56% in **Bambou** (ITR) and 54% in **Itebero** (NK)

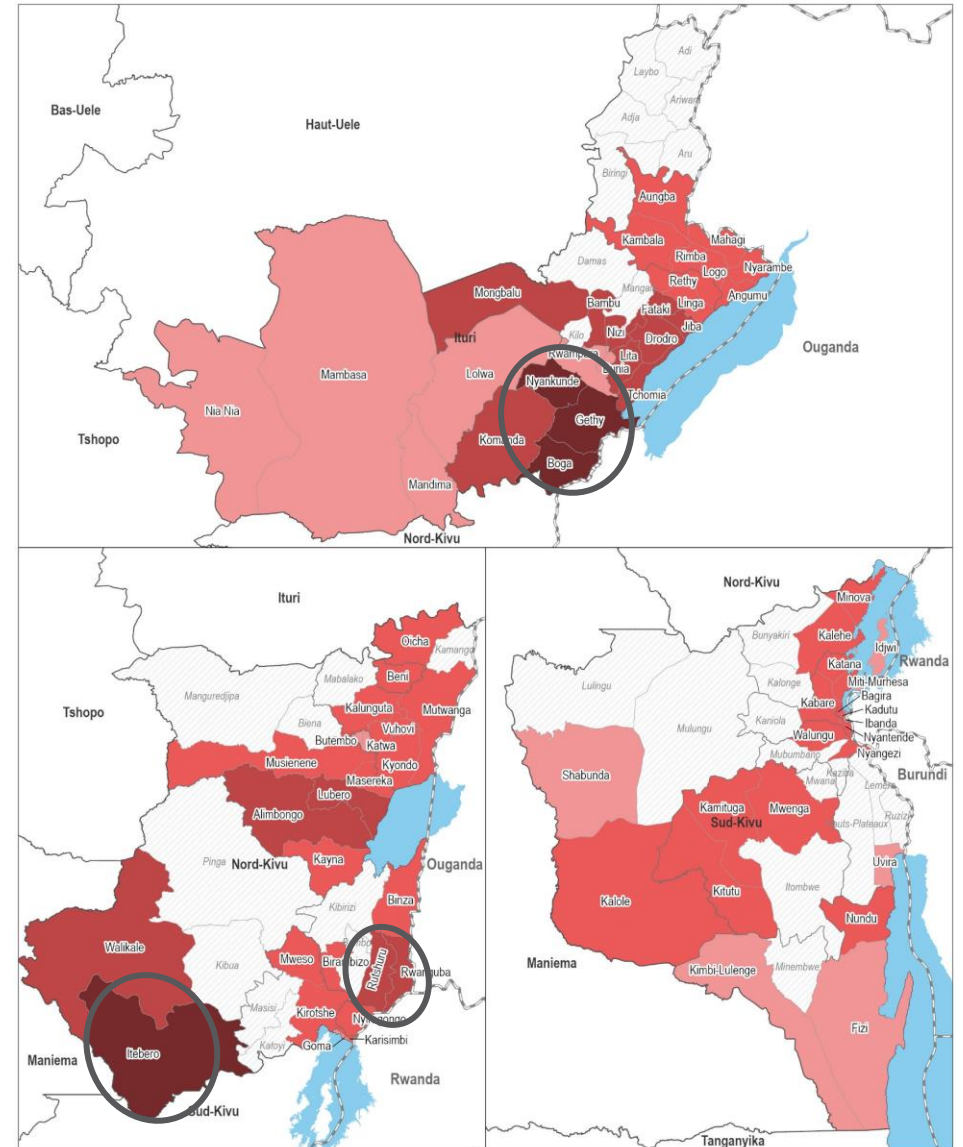


6% lived in **collective centers** in the **Birambizo** health zone (NK)



14% lived in **tents/tarpaulin shelters** in the **Angumu** HZ (ITR)

Carte | % of households with shelter needs



Damaged shelters in South Kivu and Ituri



Shelter destroyed in the territory of Kalehe, South Kivu

More than 2/3 Of households reported **damage to their shelters** in **Ituri** (67%) and **South Kivu** (62%) – *compared to 50% in North Kivu.*

Territories with the most **collapse or total destruction of shelter** :

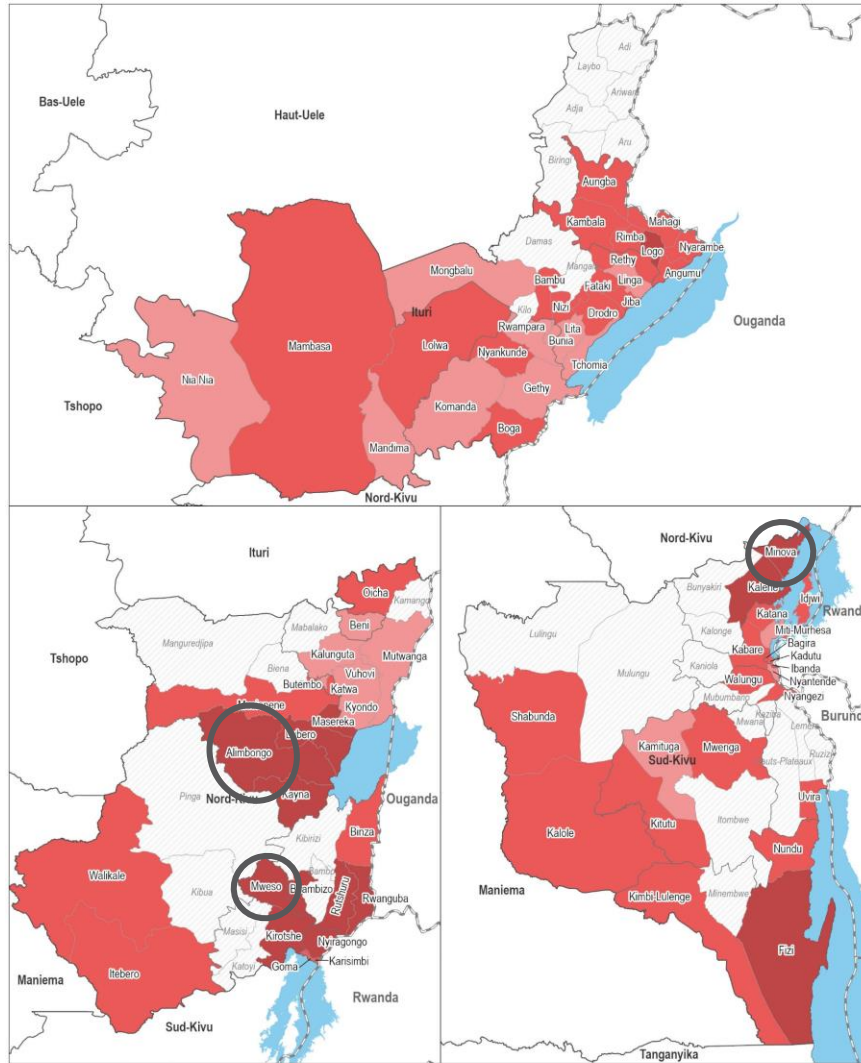
Kabare	12%
Kalehe	11%
Idjwi	9%

Sud-Kivu

Shelter/housing support was the **preferred type of support** for **24%** of households in **South Kivu** - *followed by 20% in Ituri and 14% in North Kivu.*

Structural barriers to accessing education

Carte | % of households with education needs



50% of households with education needs



40%

children (aged 5–18) were **not enrolled in formal school** in **North Kivu** (compared to 33% in South Kivu and 31% in Ituri) → **Mweso (79%), Birambizo (70%)** and **Kirotshe (65%)**

The **inability to pay direct education costs** was reported as the **primary barrier to accessing education**:

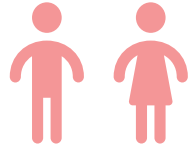
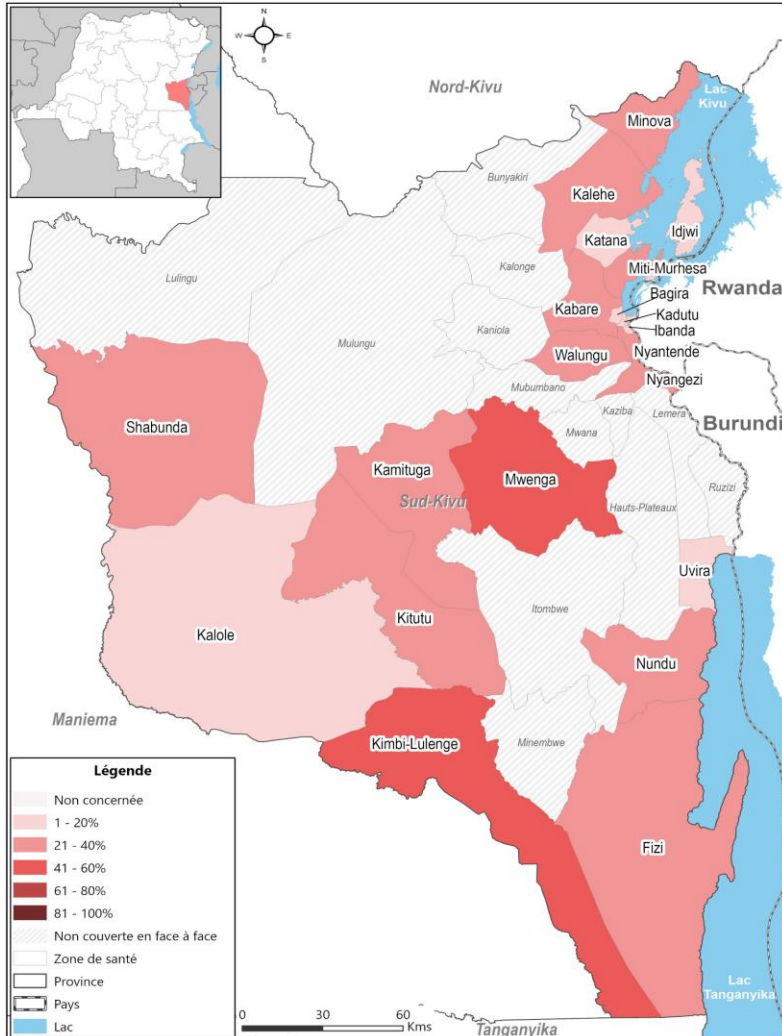
71% in SK; 66% in ITR and 56% in NK – particularly in **Nyiragongo (91%), Kabare (86%) and Minova (83%)**

The **absence of teachers** as a reason **disrupting education** – mainly in **SK: 24%** (NK: 14% and ITR: 9%)

- Primarily **Uvira (46%), Nyangezi (42%) and Kabare (41%)**

Child protection in South Kivu

Map | % of boys/girls aged 5 to 17 in **South Kivu** involved in **hazardous child labor***



24%

Children aged 5 to 17 involved in **hazardous child labor** in **South Kivu**

Compared to **12%** in Ituri and in Nord-Kivu

Mainly in the HZ of **Kimbi Lulenge** (44%), **Mwenga** (42%) and **Kitutu** (36%).

➤ **65% of these households** in Sud-Kivu** report that children **carry heavy loads** – in all localities of **Katana**

➤ Top 3 HZ with households reporting **at least one child (<18) not residing in the household**:

Miti-Murhesa (SK)	31%
Bagira (SK)	27%
Nizi (ITR) et Nyantende (SK)	24%

* During the three months preceding data collection

**This is a subset

Conflict-related barriers in accessing education

Carte | % of households with severe education needs



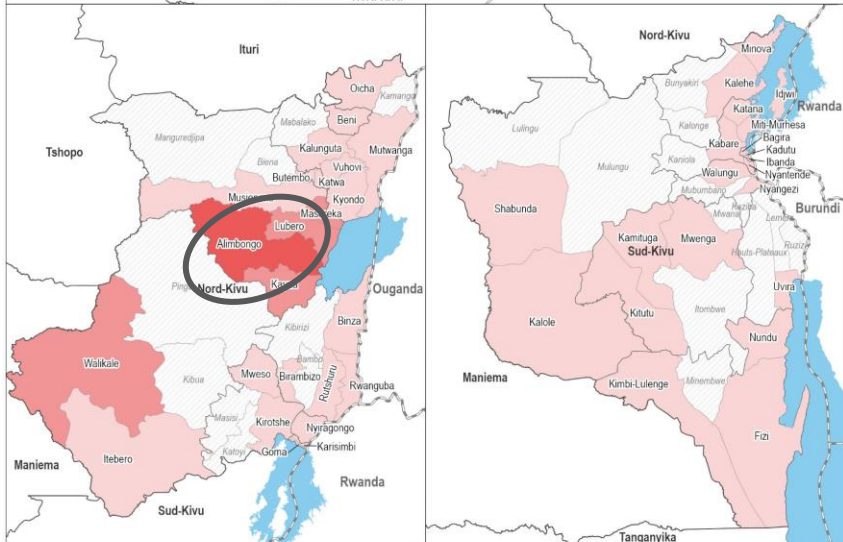
11%

Of households with severe educational needs in North Kivu → **Alimbongo (43%), Lubero (40%)** and **Masereka (38%)**



About 1/4

Of households reported **difficulties accessing schools** due to the **presence of protection threats*** within the community in **Walikale (NK) (28%), Itebero (NK) (30%)** and **Kalole (SK) (19%)**



Nord-Kivu

where **education** had been **most disrupted** by:

- **Direct attacks: 14%** → Alimbongo (57%); Lubero (45%) and Masereka (41%)
- **The use of schools as shelters by IDPs: 11%** → Alimbongo (41%); Lubero (32%) and Nyiragongon (28%)
- Natural hazards in Alimbongo (25%); Kirotshe (19%) and Kayna (19%)



Conclusions

HZ with extreme needs affected by the conflict



The **HZ** with the **most extreme to very extreme needs** are the **HZ of:**

- **Nizi, Nyankunde, Rethy, Boga, Fataki, Drodro, Gethy, Tchomia → all in Ituri**

The severity of the needs of these HZ is driven by the **very high protection needs:**

- With **problems of armed or interethnic conflict or insecurity linked to violence** in the community, forcing a member of the household **to flee several times** and with **acts of persecution or discrimination** highlighted. Problems of **insecurity for women** are also noted.
- These **security issues directly impact access to resources.**

Severe needs are concurrent in the most affected HZ in:

- Protection + food security + WASH
- Protection + food security
- Protection + WASH
- Protection + WASH + shelter (non-severe needs)
- Protection + shelter (non-severe needs)

Urgent public health needs

Alarming health needs reported – mainly in **South Kivu**:

- With nearly **half of households having unmet health needs** – HZ of Nyantende, Kabare and Nyangezi and lack of access to healthcare – HZ of Fizi, Nundu and Kimbi-Lulenge
- **Health-related shocks** involving **serious illness and/or death of a working member** of the household

Widespread WASH needs and **lack of access to WASH infrastructures**:

- **Lack of access to safe drinking water** or improved water sources, mainly in **Ituri**, followed by **North Kivu**
- **Surface water** is used as the **main source of drinking water** in almost **half** of the **Kalole** and **Nyarambe** HZ, followed by **Shabunda**
- **Open defecation mainly in HZ of Ituri** and widespread lack of access to handwashing facilities

Low **assistance in these sectors remains despite the needs**:

- Widespread lack of assistance in drinking water despite households' preference for this type of assistance
- Healthcare assistance remains low in South and North Kivu but higher in Ituri



Structural needs coupled with protection risks

Economic difficulties remain a major factor:

- Contributing to **food insecurity – mainly in Ituri**, through high prices for goods, lack of money, and payment difficulties reported in ZS in the three provinces
- Impact on **access to education** – with **almost half of households with children not enrolled in formal education in North Kivu**, and the main barrier to access to education being the **direct costs associated with education** in the three provinces



Shelter needs remains **widespread** across all three provinces

- **Shelter support** is nevertheless a **preferred type of assistance in South Kivu**

These difficulties are coupled with protection issues

- **Child protection in South Kivu – with children involved in hazardous work**, particularly in the health zones of Kimbi Lulenge, Mwenga and Kitutu and with **the highest proportion** of health zones reporting **children not residing in the household**
- **Difficulties** in accessing **education** due to **conflicts in North Kivu** – with **protection threats impacting access to education** in the **Itebero** and **Walikale** health zones and **direct attacks on schools** or the use of schools as shelters for IDPs **disrupting access to education** in Alimbongo and Lubero



Thank you.

maud.lampreia@impact-initiatives.org
marie-francoise.sitnam@impact-initiatives.org