

SYRIA – Twahina Informal IDP Camp

Overview – As of July 2020

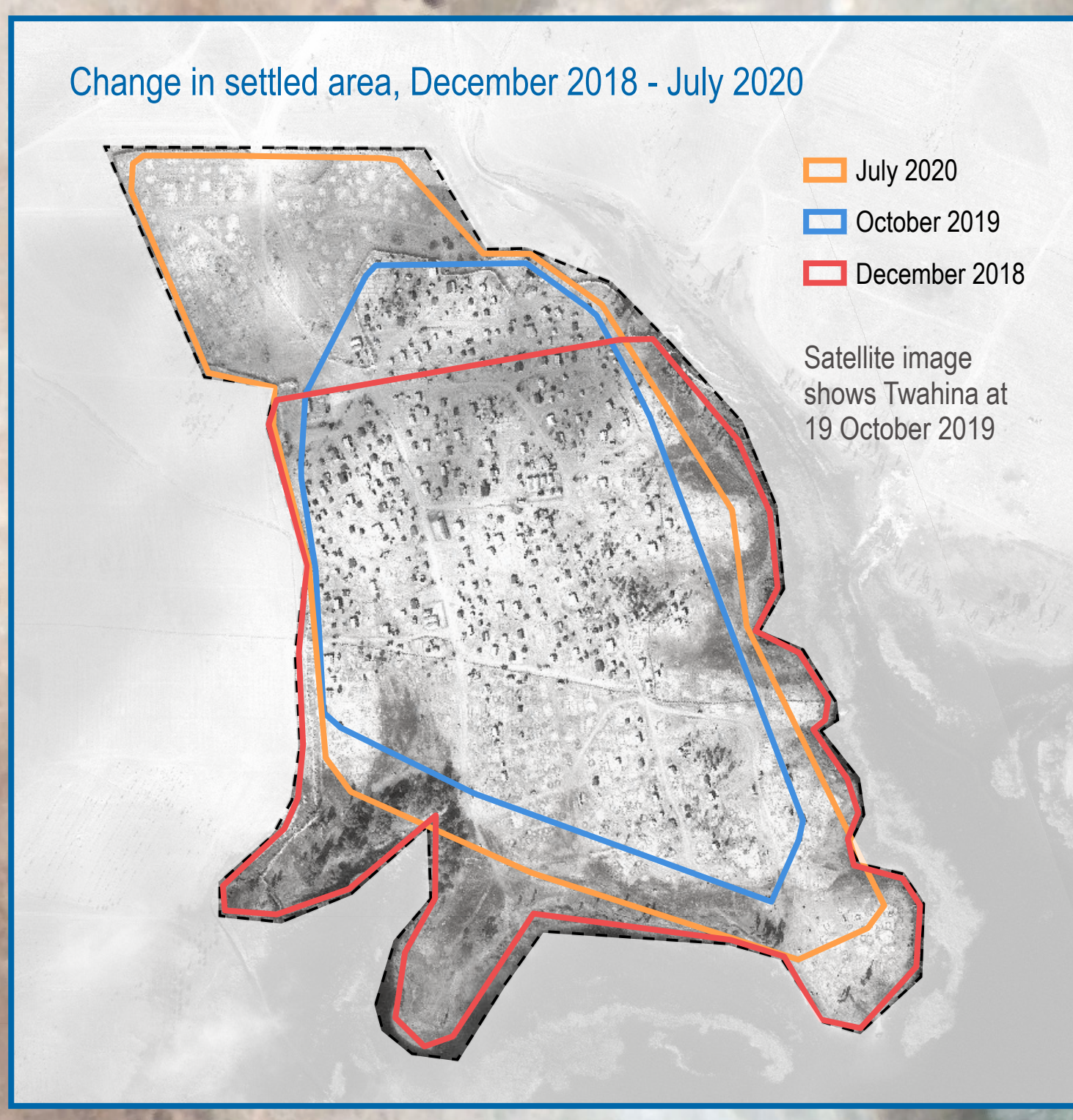
For Humanitarian Purposes Only
Production date: 16 August 2020



IMPORTANT:
Camp infrastructure data collected 26 February 2020;
satellite imagery acquired 26 July 2020.

<p>Latrines: 59 0 female-only</p>	<p>Water tanks: 1m³: 37 2m³: 1 5m³: 2 Total tank capacity: 49m³</p>
<p>Showers: 0</p>	

Approximately 675 shelters in Twahina at the time of image acquisition (July 2020)



- General infrastructure**
- Block *
 - Camp boundary
 - Shelter / structure
 - Camp entrance
 - Shop
 - Child-friendly space
 - School
 - UN / NGO office

- Sanitation infrastructure**
- | | |
|------------|------------------|
| 1 latrine | 1 m ³ |
| 5 latrines | 2 m ³ |
| | 5 m ³ |

Data Sources:
Infrastructure: REACH
Satellite imagery: Pleiades from 26 July 2020 and 19 October 2019
Copyright: CNES
Source: Airbus DS

File name: REACH_SYR_Map_CAMP_Twahina_Aug20_A0

Projection: WGS 1984 UTM Zone 37N
Contact: mena.reach@impactinitiatives.org

Note: Data, designations and boundaries contained on this map are not warranted to be error-free and do not imply acceptance by the REACH partners, associates, donors mentioned on this map.

* Labels are only shown for blocks with IDs assigned