

IRAQ - Baghdad - Al-Ahal Shooting Camp

General Infrastructure - Updated 22-Sep-2020

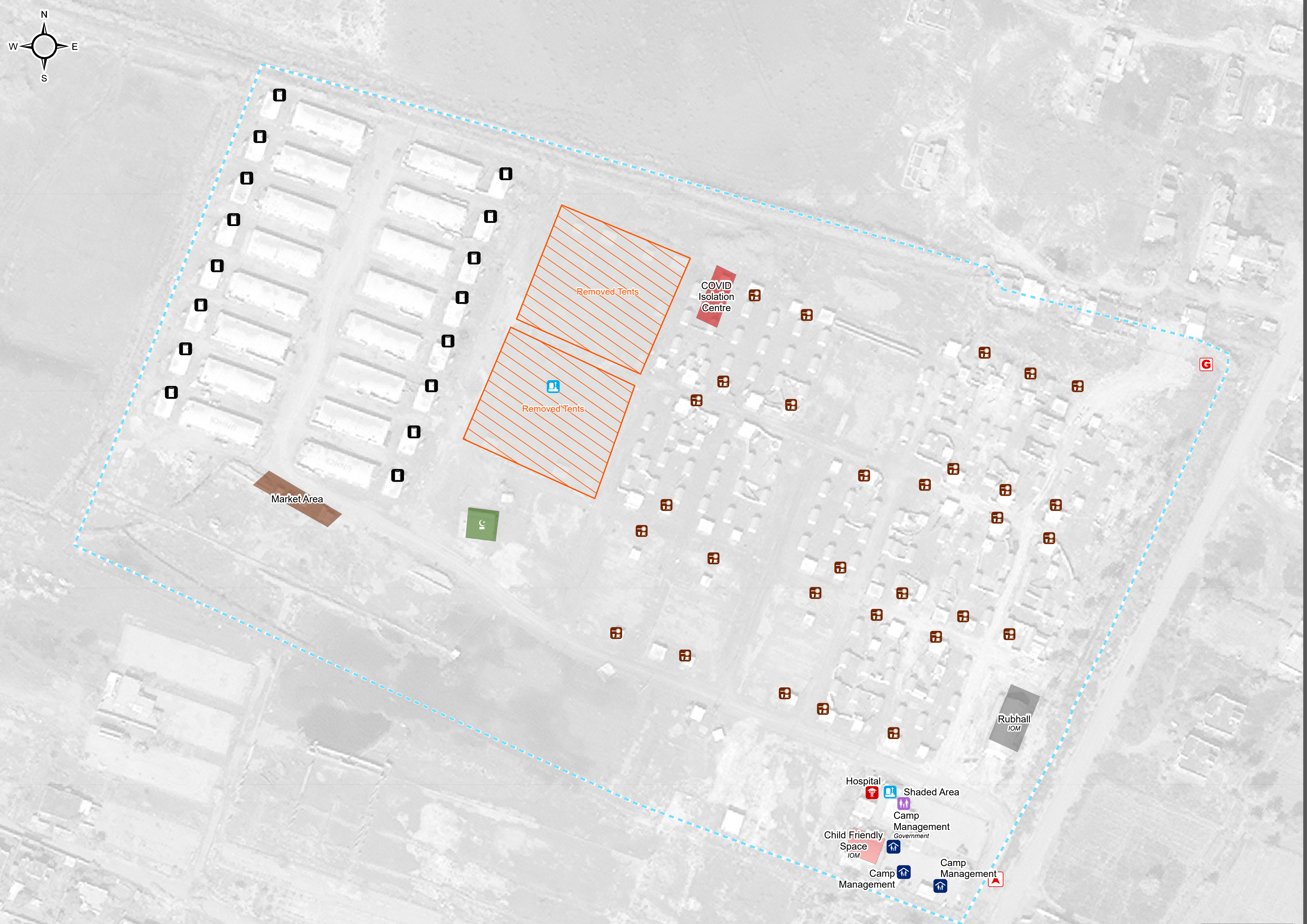
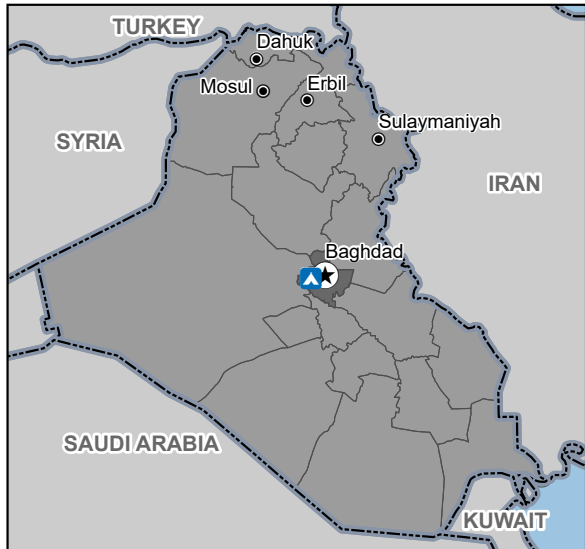
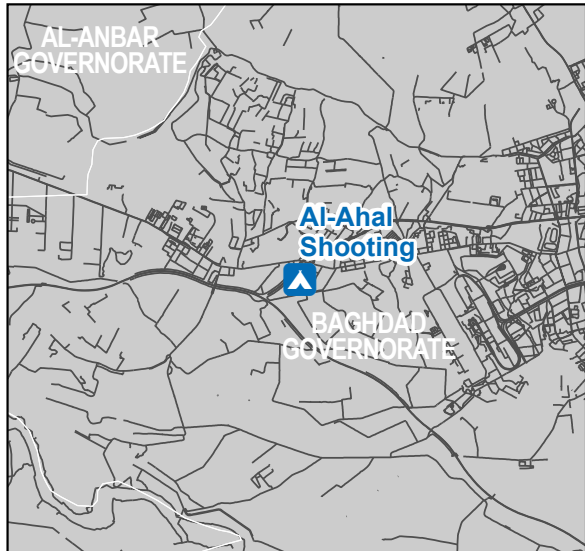
For Humanitarian Purposes Only
Production date : 12 November 2020

Camp Infrastructure

- Camp Delineation
- Removed Tent
- Health
- Child Friendly Space
- Service
- Storage
- Mosque
- Entrance
- Health
- Camp Management
- Commuinty Centre
- Kitchen
- Generator
- Latrine and Shower (16)
- Water Filtration/Purification System (2)

Thematic Data: 22/09/2020 - REACH
Administrative boundaries: GADM, OCHA
Satellite Imagery: WorldView-1 from 07/08/2020
Copyright: ©2020, DigitalGlobe
Source: US Department of State, Humanitarian Information Unit, NextView License
Coordinate System: WGS 1984 UTM Zone 38N
Contact: iraq@reach-initiative.org
File: REACH_IRQ_Map_IDP_Al-Ahal Shooting_12Nov2020

Note: Data, designations and boundaries contained on this map are not warranted to be error-free and do not imply acceptance by the REACH partners, associates or donors mentioned on this map.



GPS Coordinates
of Camp Location :
Longitude: 44°6'27.44"E
(44.1076212)
Latitude: 33°17'22.58"N
(33.2896058)