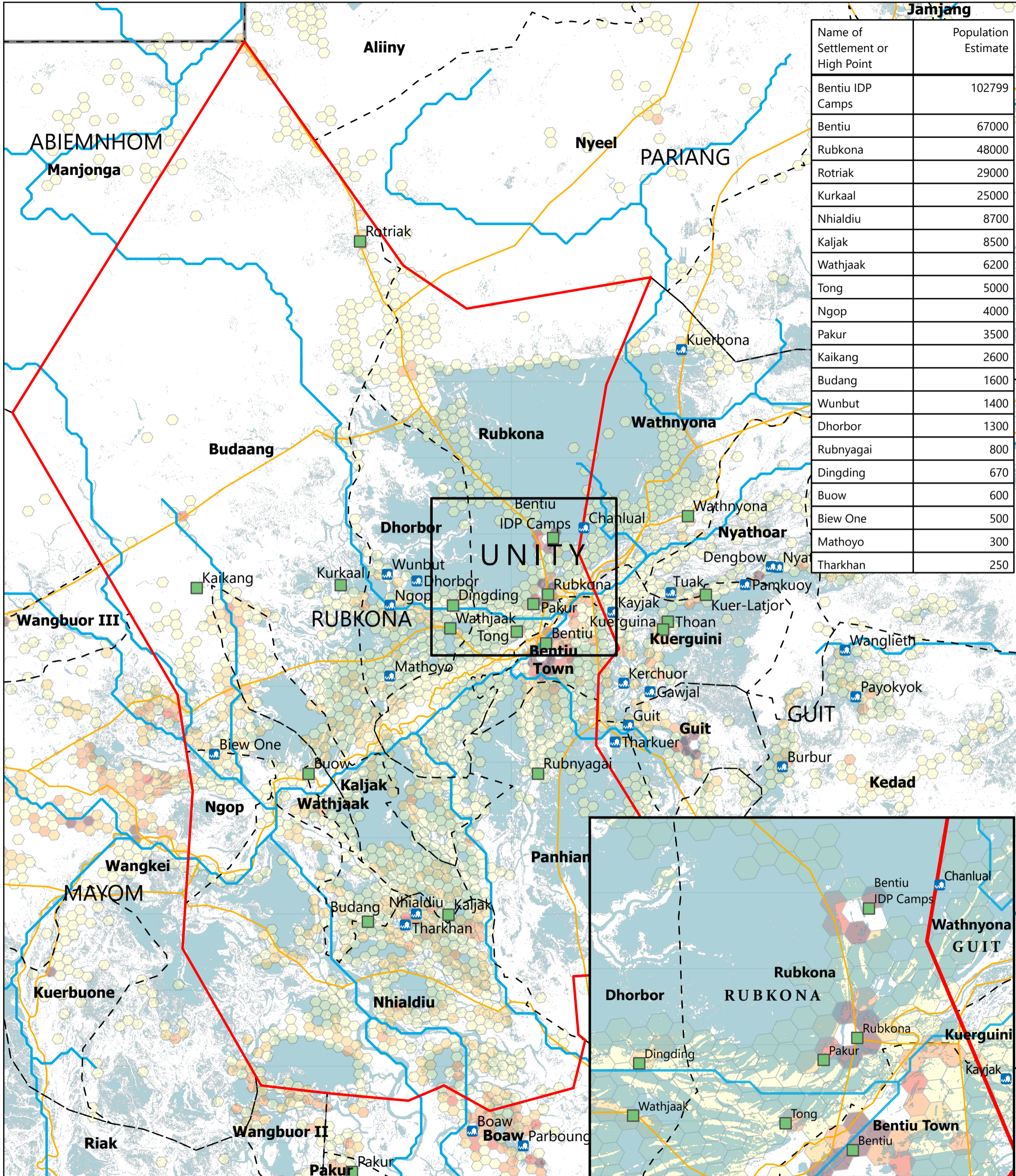


SOUTH SUDAN - Rubkona County

Flood overview (December 2025)

For Humanitarian Purposes Only
Production Date: 08 December 2025



| Name of Settlement or High Point | Population Estimate |
|----------------------------------|---------------------|
| Bentiu IDP Camps | 102799 |
| Bentiu | 67000 |
| Rubkona | 48000 |
| Rotriak | 29000 |
| Kurkaal | 25000 |
| Nhialdiu | 8700 |
| Kaljak | 8500 |
| Wathjaak | 6200 |
| Tong | 5000 |
| Ngop | 4000 |
| Pakur | 3500 |
| Kaikang | 2600 |
| Budang | 1600 |
| Wunbut | 1400 |
| Dhorbor | 1300 |
| Rubnyagai | 800 |
| Dingding | 670 |
| Buow | 600 |
| Biew One | 500 |
| Mathoyo | 300 |
| Tharkhan | 250 |



Population (Kontur, 2023)

- 1 - 100
- 101 - 250
- 251 - 500
- 501 - 750
- > 750

Satellite-detected flood extent (FEWSNET, as of 30th September 2025)

- Flooded settlements
- High Ground (OCHA 2024 & UNMISS 2025)
- Roads
- River
- Payam
- Focus County
- County
- State

0 5 10 Km

Data sources: Source: REACH, OCHA, UNMISS, IOM_DTM, UNOSAT, FEWSNET
Name: GCS WGS 1984
File: REACH_SSD_Map_Unity_Rubkona_Flood_08_Dec_2025
Contact: reach.mapping@impact-initiatives.org

Scan here to give feedback

from the British people

Note: Data, designations and boundaries contained on this map are not warranted to be error-free and do not imply acceptance by REACH partners, associates or donors mentioned on this map.