

NORTHWEST SYRIA MARKET MONITORING EXERCISE

Snapshot: 1-8th February 2021

INTRODUCTION

To inform humanitarian cash programming, REACH, in partnership with the Cash Working Group (CWG), conducts monthly Market Monitoring Exercises in northern Syria to assess the availability and prices of 36 basic commodities that are typically sold in markets and consumed by average Syrian households, including food and non-food items, water, fuel, and cellphone data.

Of these, 18 items comprise the Survival Minimum Expenditure Basket (SMEB; see below), which represents the minimum, culturally adjusted items required to support a 6-person household for a month.

Data collection took place between 1-8th February 2021 and was conducted by Care Shafak, GOAL, People In Need, Syrian Association for Relief and Development (SARD), Solidarités International, Violet, NRC and REACH.

The accompanying data is disseminated monthly and is distributed through partners across the humanitarian community. See REACH Resource Centre for the [February 2021 data](#).

SURVIVAL MINIMUM EXPENDITURE BASKET (SMEB) CONTENTS

	Item	Quantity	
Food Items	Bread	37 kg	
	Bulgur	15 kg	
	Chicken	6 kg	
	Eggs	6 kg	
	Fresh vegetables	12 kg	
	Ghee/vegetable oil	7 kg/L	
	Red lentils	15 kg	
	Rice	19 kg	
	Salt	1 kg	
	Sugar	5 kg	
	Tomato paste	6 kg	
	Hygiene items	Bathing soap	12 bars
		Laundry/dish soap	3 kg
Sanitary pads		4 packs of 10	
Toothpaste		200 g	
Fuel	Cooking fuel*	25 L	
Water	Water trucking	4500 L	
Telecom	Smartphone data	1 GB	
Other	Float (other costs)**	7.5% total value	

* Kerosene in northern Syria

** Float only applied to observations where prices of all SMEB contents could be collected

KEY DEVELOPMENTS

Coverage and data collection dates

In February 2021, REACH and partners covered 26 sub-districts and 2,230 individual shops in northwest Syria (NWS) for the Market Monitoring Exercise. In light of the fluctuation of the Syrian Pound (SYP)'s value and resulting market disruption, prices in the Market Monitoring dataset and output should be seen as representative only of the markets and dates where and when information was collected (1-8th February).

Highest northwest SMEB SYP cost recorded; SMEB USD cost slightly increased

In February, the value of the regional Survival Minimum Expenditure Basket (SMEB) reached 348,347 SYP, a 6% increase compared to January and a 55% long-term increase since August 2020, setting a new record for the highest ever recorded price in the Market Monitoring

Exercise in NWS. The SMEB in United States Dollar (USD) increased from 113 USD in January to 116 USD in February alongside a depreciation of the SYP against the USD (see next paragraph).

Depreciation of the SYP against the USD

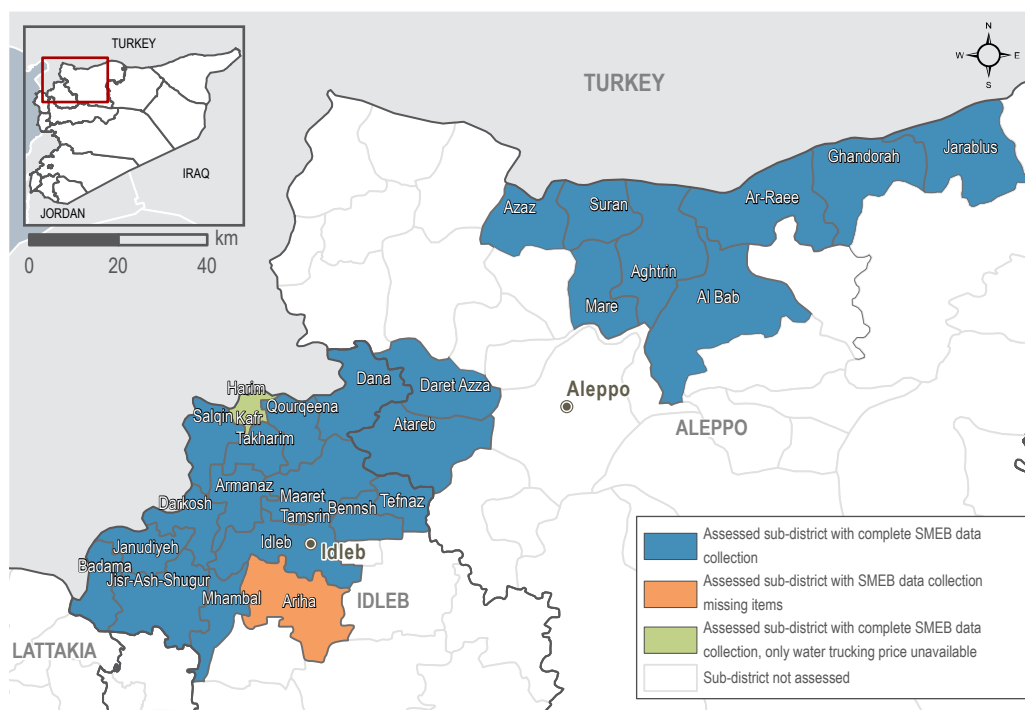
In February, the informal USD/SYP regional median exchange rate increased by 5% since January and reached a regional median of 3,000 USD/SYP. The six-month change, a 39% increase since August 2020, highlights that the SYP remains an unstable currency against the USD. The highest exchange rate was recorded at 3,160 SYP to 1 USD in Batbu community in Aleppo governorate.

Fuel prices further increased

At the regional level, overall prices for transport fuels increased by 9% between January and February,

with a median price of 1,859 SYP per litre. Less expensive, manually refined fuels, including petrol and kerosene remained largely unavailable in NWS due to inaccessibility of raw material inputs and low levels of import for fuels that are refined in northeast Syria (NES). Low levels of import are also due to the depreciation of the SYP and price increases in global price of fuel. For example, 77% of surveyed fuel vendors reported that manually refined petrol was not available in their market at the time of data collection. With the significant unavailability of lower quality but less expensive fuels, prices for high quality diesel and petrol (largely European fuels imported via Turkey) continued increasing in February, driven both by increasing demand as well as by fluctuating exchange rates of both the SYP and the TRY against the USD.

ASSESSED AREAS AND COVERAGE

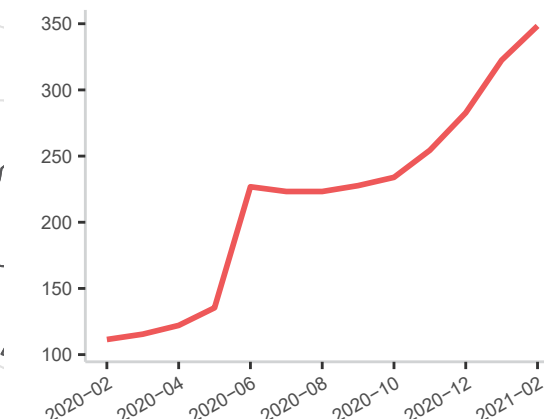


MEDIAN SMEB COST IN SYP (USD), BY REGION

348,347 SYP (116 USD) | NORTHWEST SYRIA - IDLEB, WESTERN & NORTHERN ALEPPO GOVERNORATES

MEDIAN SMEB COSTS, BY MONTH

Thousand Syrian Pounds



KEY DEVELOPMENTS

348,347 SYP (116 USD) **NORTHWEST SYRIA - IDLEB, WESTERN & NORTHERN ALEPPO GOVERNORATES**

Continued increase of food item prices

The cost of the regional SMEB food component reached 244,765 SYP in February, a 8% increase since January and a 59% increase since August 2020. The fresh food/vegetable component of the SMEB increased by 18% since January. The price of cucumbers increased by 27%, potatoes increased by 18%, green peas increased by 7% and tomatoes remained at the same price as in January, contributing to a 234% price increase for the fresh vegetable component since August 2020. According to REACH field teams, this trend is primarily a result of decreased availability of locally grown warm weather produce and increased reliance on more expensive, imported produce, as well as due to increasing transport fuel prices and the further depreciation of the SYP

Bulk food prices also increased by 10% overall since January, again due to the higher cost of imported items, rising fuel costs, and unstable exchange rates against the USD. REACH field teams also reported that this trend may be due to the lack of bulk/dried food distributions by organizations, in addition to the increase in demand and consumption due to the lack of alternative food products in the winter season. The price of bread (bag of 8 pieces) also increased by 5% since December, reaching a regional median of 800 SYP. [Increasing bread prices](#) are primarily due to a similar rise in the price of flour (6% increase since January), a product which is in short supply in the region and for which import

prices are dependent on fluctuating exchange rates, according to REACH field teams. Additionally, high prices were also recorded for other SMEB food items such as chicken, the price of which decreased by 3% since January but has increased by 41% since August 2020, due to a combination of factors including SYP depreciation and the limited availability of locally raised chicken. For similar reasons, the price of eggs increased by 9% since January and by 91% since August 2020.

Rising cost of cooking oils and cooking fuels

In addition to the rising cost of food items themselves, additional items that are necessary for the preparation and cooking of raw food also increased in price. Median regional prices for vegetable oil and ghee, both commonly used for cooking, rose by 12% and 11% respectively between January and February, continuing a significant upward trend. Both commodities are largely imported into NWS and, therefore, subject to exchange rate fluctuations. The cost of fuels used for cooking also increased over this one-month period by 8%, whereby the median price of manually refined kerosene increased by 2% and liquid petroleum gas (LPG) increased by 7%. As reported above, manually refined kerosene is often unavailable in many markets of NWS (reported as unavailable by 57% of surveyed fuel vendors in February), leading consumers in NWS to rely more heavily on the use of LPG for cooking purposes.

MEDIAN SMEB COSTS & CHANGES*

Syrian Pounds

Sub-district	SMEB	One month change*	Six month change*
Northwest Syria	348,347	6%	55%
Aghtrin	312,172	8%	51%
Al Bab	301,110	2%	36%
Ariha	NA	NA	NA
Armanaz	393,461	12%	66%
Ar-Ra'ee	325,895	14%	74%
Atareb	391,881	6%	54%
A'zaz	307,005	4%	41%
Badama	322,109	4%	33%
Bennsh	346,044	13%	42%
Dana	366,054	7%	58%
Daret Azza	355,863	9%	69%
Darkosh	372,342	1%	79%
Ghandorah	301,785	2%	44%

Sub-district	SMEB	One month change*	Six month change*
Harim**	349,724	25%	63%
Idleb	370,864	7%	60%
Janudiyeh	347,333	NA	NA
Jarablus	324,694	9%	54%
Jisr-Ash-Shugur	361,775	9%	60%
Kafr Takharim	353,945	11%	67%
Maaret Tamsrin	349,362	6%	50%
Mare'	329,404	0%	53%
Mhambal	354,827	3%	56%
Qourqeena	358,620	5%	59%
Salqin	371,203	8%	60%
Suran	338,077	12%	59%
Teftnaz	336,558	-2%	36%

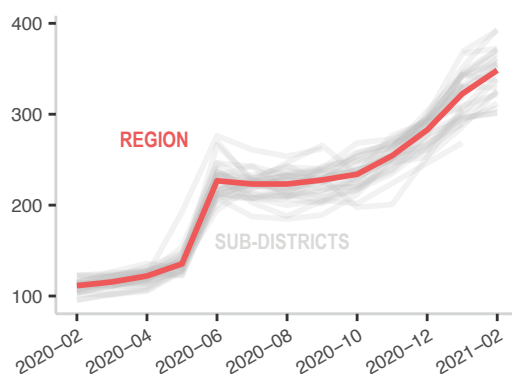
* For price and change calculations, only the communities within a sub-district with consistent coverage across months are included.

** SMEB calculated without water trucking component.

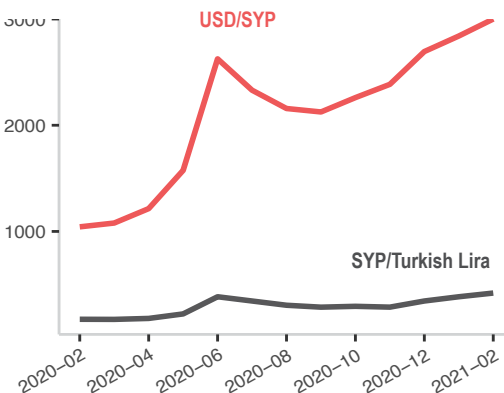
Note: Lack of data for a SMEB item does not necessarily imply a shortage.

MEDIAN SMEB COSTS, BY MONTH

Thousand Syrian Pounds



EXCHANGE RATES, BY MONTH & CURRENCY

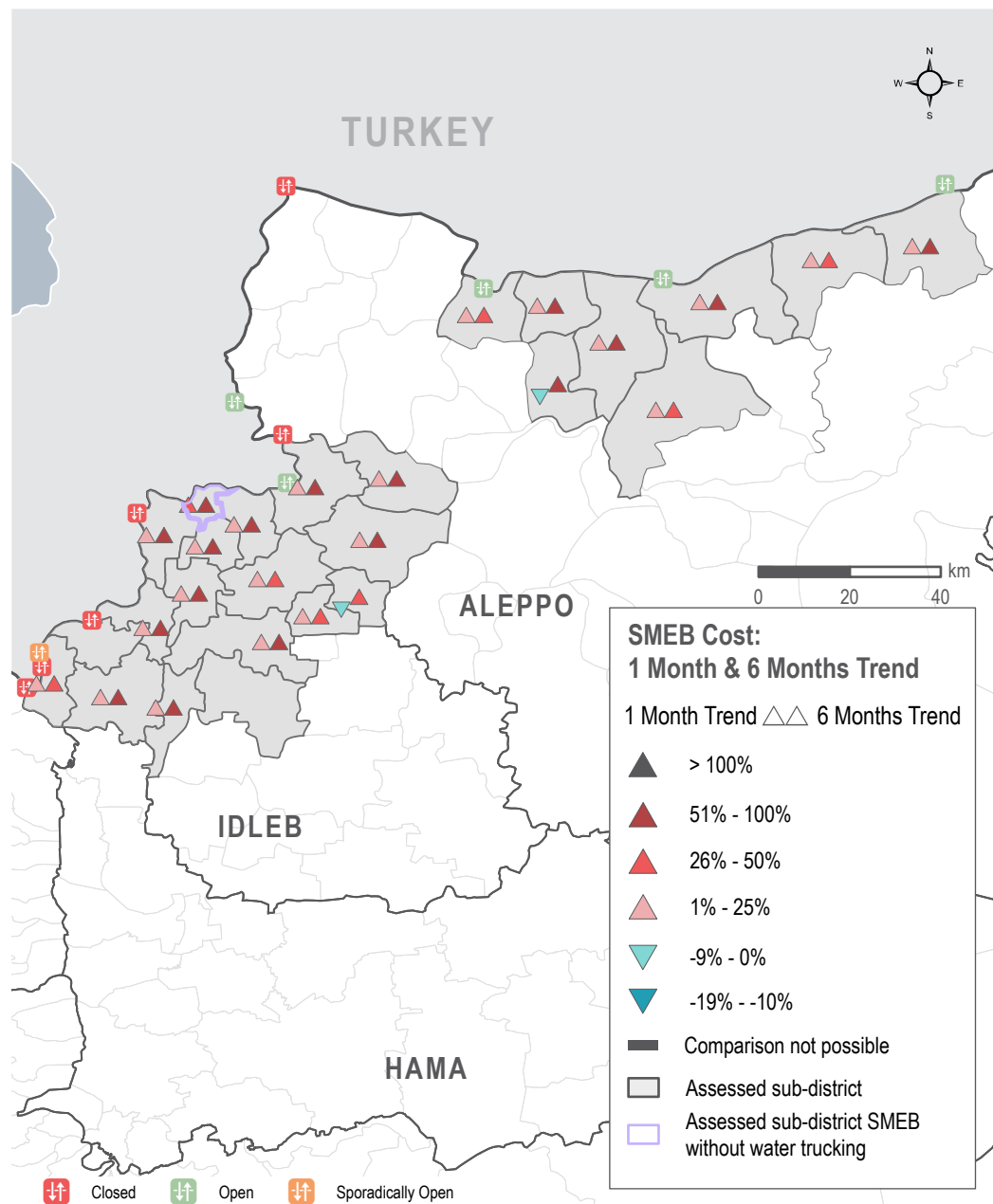


SUB-DISTRICTS WITH INCOMPLETE SMEB IN JANUARY

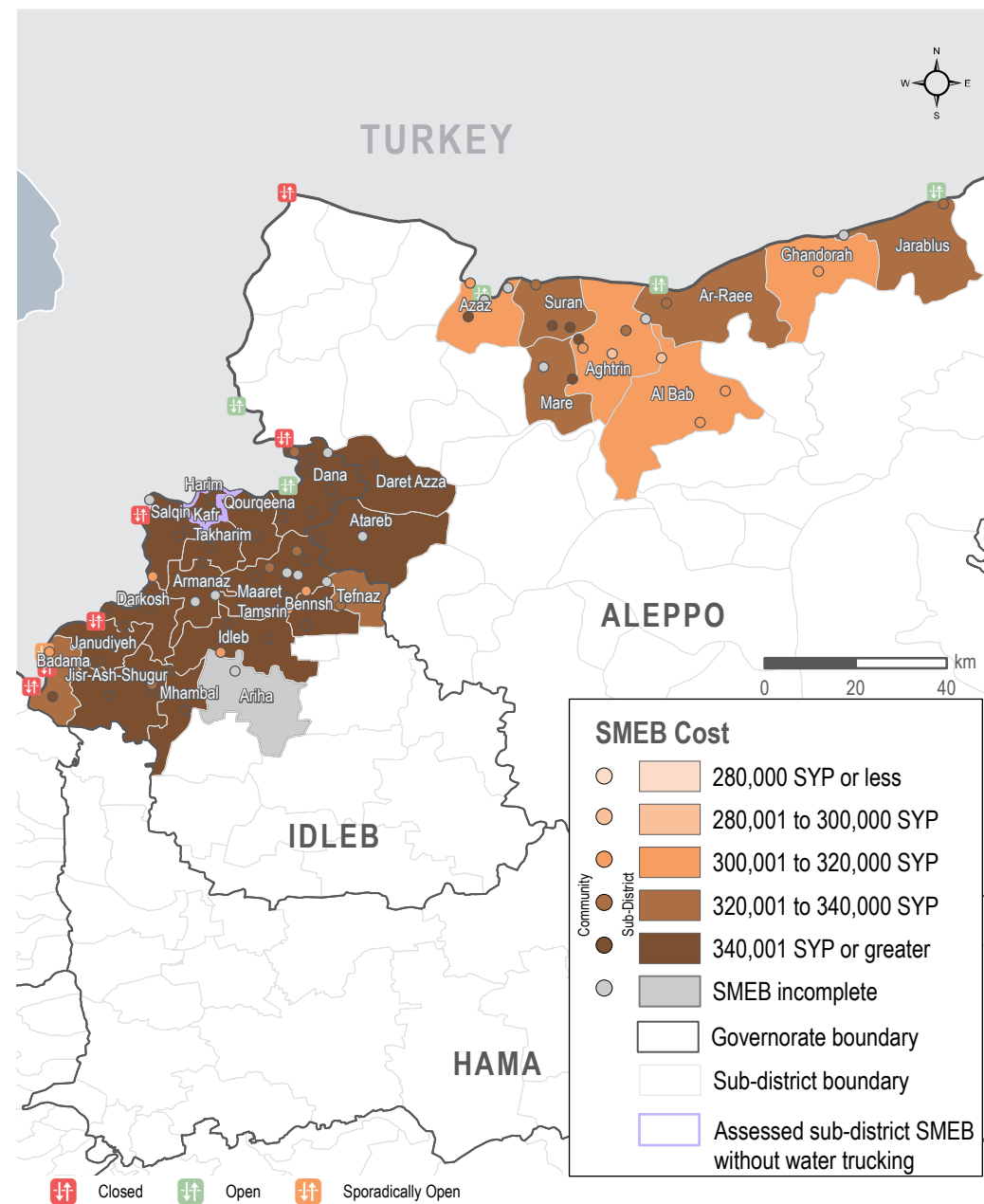
Ariha Bread and kerosene

Note: Lack of data for a SMEB item does not necessarily imply a shortage.

SMEB COST: ONE MONTH & SIX MONTHS TREND



SMEB COST RANGES (SYP), BY SUB-DISTRICTS & COMMUNITIES



MEDIAN SMEB COST: FOOD ITEMS

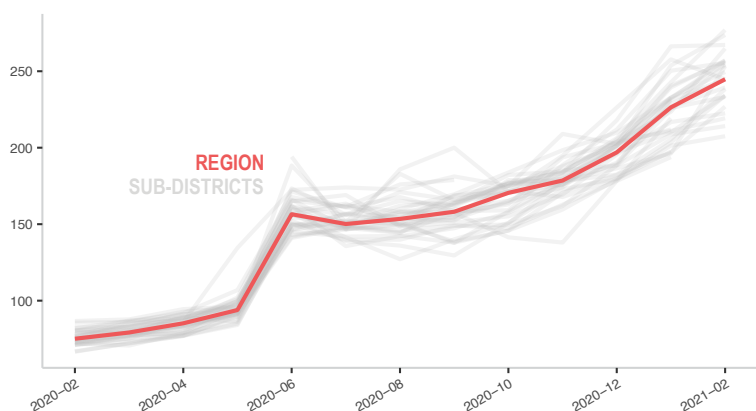
See Page 1, Syrian Pounds

Sub-district	SMEB Food	One month change	Six month change	Sub-district	SMEB Food	One month change	Six month change
Northwest Syria	226,381	15%	51%	Harim	253,250	29%	69%
Aghtrin	226,850	15%	59%	Idleb	244,575	7%	43%
Al Bab	207,510	3%	39%	Janudiyeh	249,500	7%	56%
Ariha	NA	NA	NA	Jarablus	233,942	11%	65%
Armanaz	276,960	14%	68%	Jisr-Ash-Shugur	254,600	9%	71%
Ar-Ra'ee	234,250	15%	84%	Kafr Takharim	264,866	18%	72%
Atareb	273,692	8%	59%	Maaret Tamsrin	244,700	6%	57%
A'zaz	222,500	3%	50%	Mare'	233,200	3%	51%
Badama	219,263	4%	35%	Mhambal	255,523	2%	52%
Bennsh	254,100	13%	39%	Qourqeena	239,425	6%	56%
Dana	256,023	6%	63%	Salqin	256,985	7%	63%
Daret Azza	257,125	11%	72%	Suran	238,365	16%	58%
Darkosh	267,185	0%	78%	Tefnaz	244,765	-5%	32%
Ghandorah	214,150	3%	53%				

* For this sub-district, more than 50% of the SMEB food items median price rely on less than 3 observations.

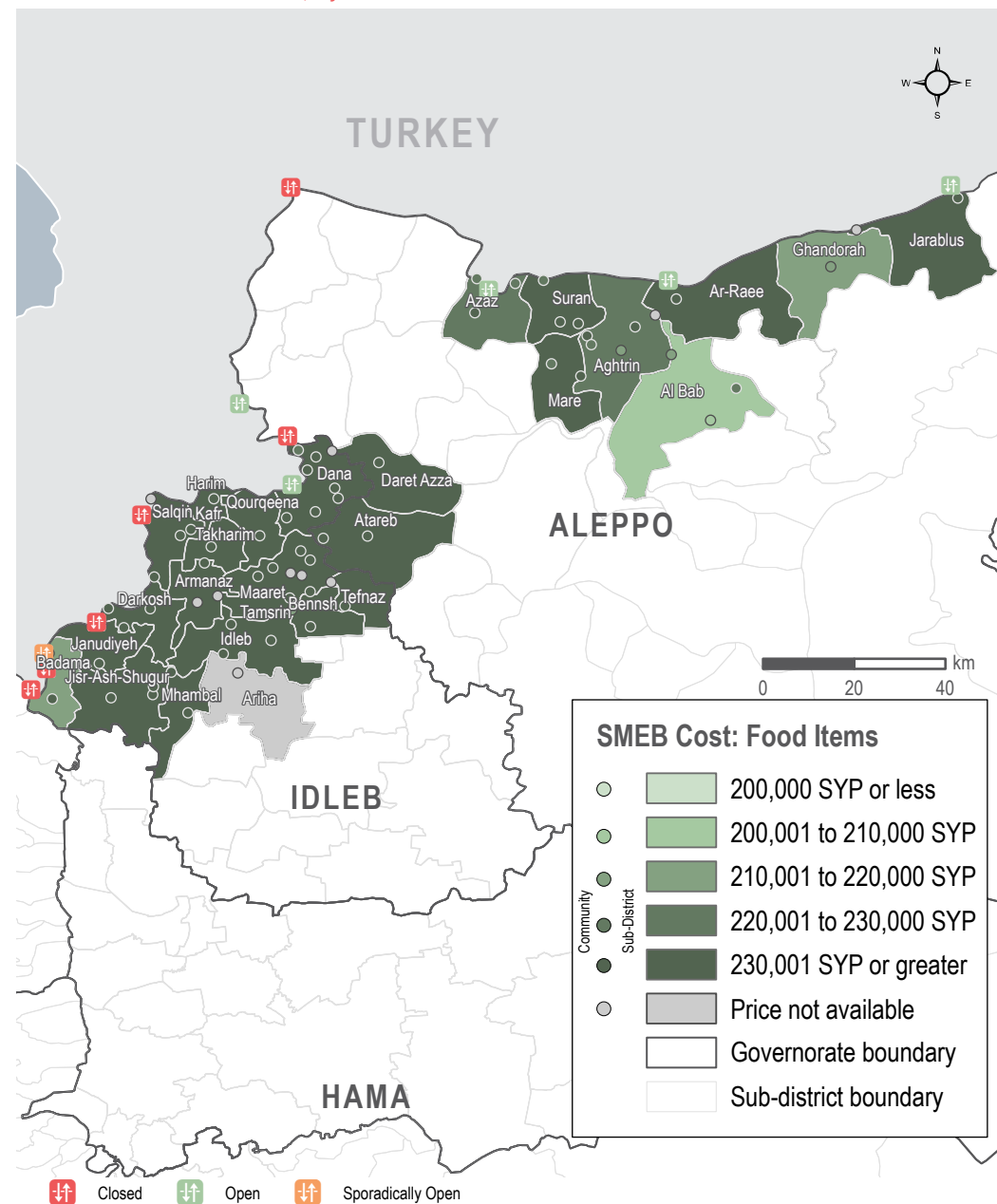
MEDIAN SMEB COST: FOOD ITEMS, BY MONTH

Thousand Syrian Pounds



SMEB FOOD ITEMS' COST

Sub-districts & Communities, Syrian Pounds



MEDIAN SMEB COOKING FUEL PRICE

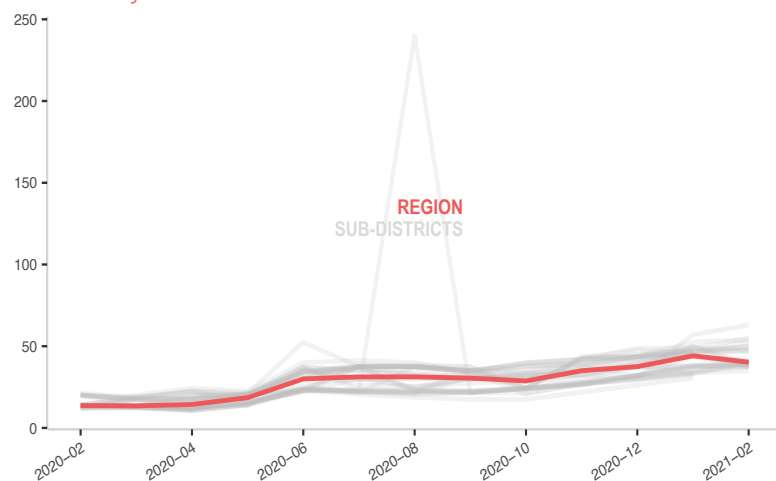
Kerosene 25L and LPG 20L, Syrian Pounds

Sub-district	SMEB Cooking Fuel	One month change	Six month change	Sub-district	SMEB Cooking Fuel	One month change	Six month change
Northwest Syria	40,250	-8%	30%	Harim	50,000	8%	33%
Aghtrin	37,500	-25%	22%	Idleb	63,000	11%	190%
Al Bab	41,250	-7%	38%	Janudiyeh*	38,750	5%	68%
Ariha*	38,750	2%	-84%	Jarablus	37,500	-2%	15%
Armanaz	54,063	3%	52%	Jisir-Ash-Shugur	47,500	6%	27%
Ar-Ra'ee*	37,500	8%	50%	Kafr Takharim*	38,938	-11%	78%
Atareb*	52,500	14%	62%	Maaret Tamsrin	47,500	0%	27%
A'zaz	35,000	4%	8%	Mare'	40,000	-20%	60%
Badama	46,875	0%	25%	Mhambal*	40,625	6%	76%
Bennsh*	39,953	20%	76%	Qourqeena	48,750	0%	26%
Dana	50,000	7%	33%	Salqin	55,000	13%	38%
Daret Azza*	40,500	9%	82%	Suran	37,500	-14%	50%
Darkosh*	39,375	5%	84%	Teftnaz*	39,906	19%	72%
Ghandorah*	37,500	0%	20%				

* For these sub-districts, 50% or more the median prices of cooking fuels rely on less than 3 observations.

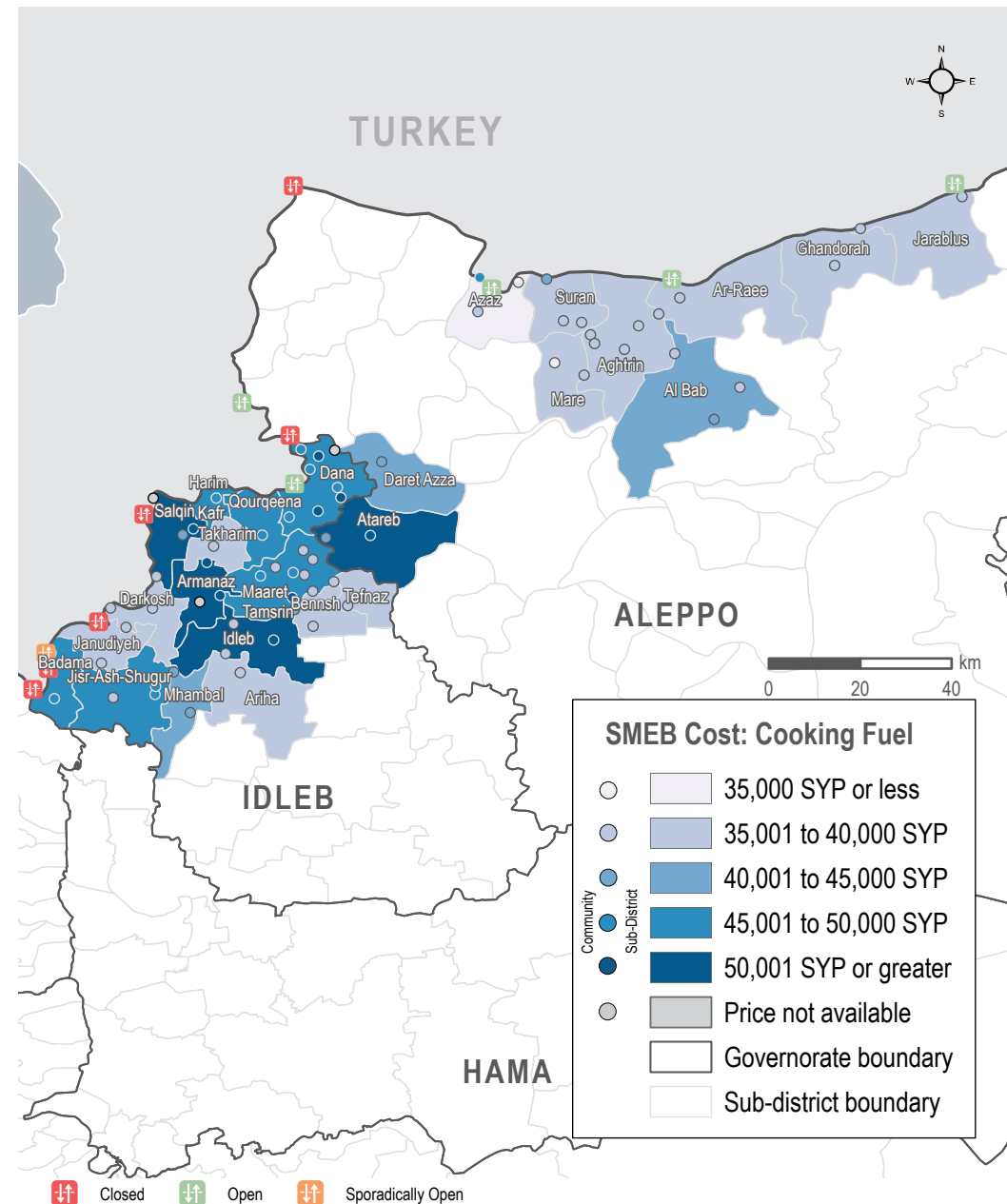
MEDIAN SMEB COOKING FUEL COSTS, BY MONTH

Thousand Syrian Pounds



SMEB COOKING FUEL COST

Sub-districts & Communities, Syrian Pounds



MEDIAN SMEB WATER TRUCKING PRICE

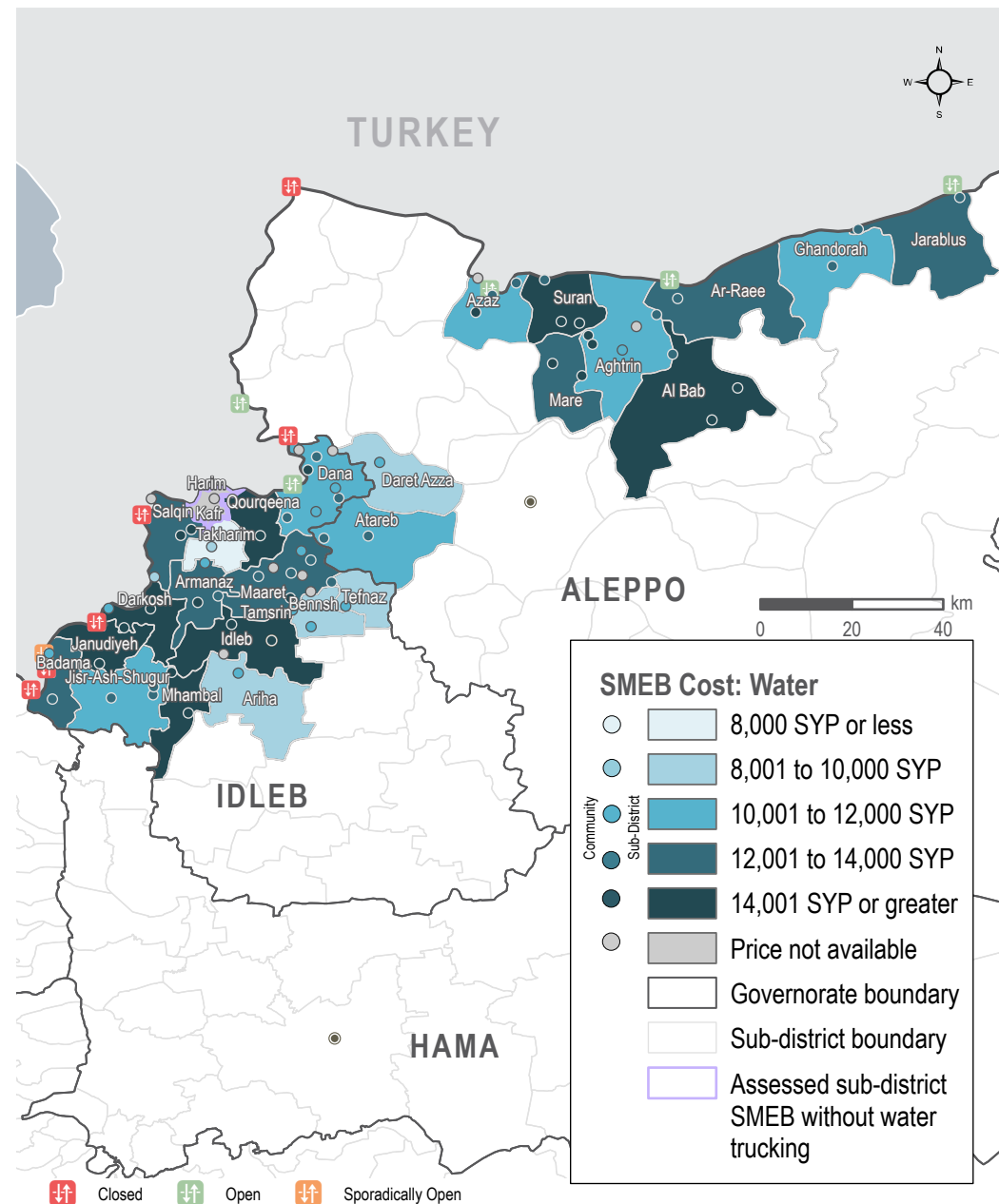
4,500L, Syrian Pounds

Sub-district	SMEB Water Truck	One month change	Six
Northwest Syria	12,015	7%	38%
Aghtrin	11,543	11%	20%
Al Bab	14,918	6%	23%
Ariha	8,550	3%	33%
Armanaz	12,780	11%	79%
Ar-Ra'ee	12,015	15%	20%
Atareb	10,125	-3%	25%
A'zaz	11,761	16%	31%
Badama	12,015	28%	15%
Bennsh	8,933	21%	31%
Dana	10,643	3%	42%
Daret Azza	8,910	-18%	19%
Darkosh	16,155	1%	69%

Sub-district	SMEB Water Truck	One month change	Six
Ghandorah	11,250	0%	5%
Harim	NA	NA	NA
Idleb	19,800	1%	85%
Janudiyeh	15,750	10%	250%
Jarablus	12,375	-1%	22%
Jisir-Ash-Shugur	11,475	16%	22%
Kafr Takharim	5,423	-52%	-37%
Maaret Tamsrin	12,038	22%	18%
Mare'	13,298	8%	65%
Mhambal	17,505	20%	101%
Qourqeena	22,500	13%	400%
Salqin	13,095	7%	103%
Suran	18,000	39%	100%
Tefnaz	9,900	21%	53%

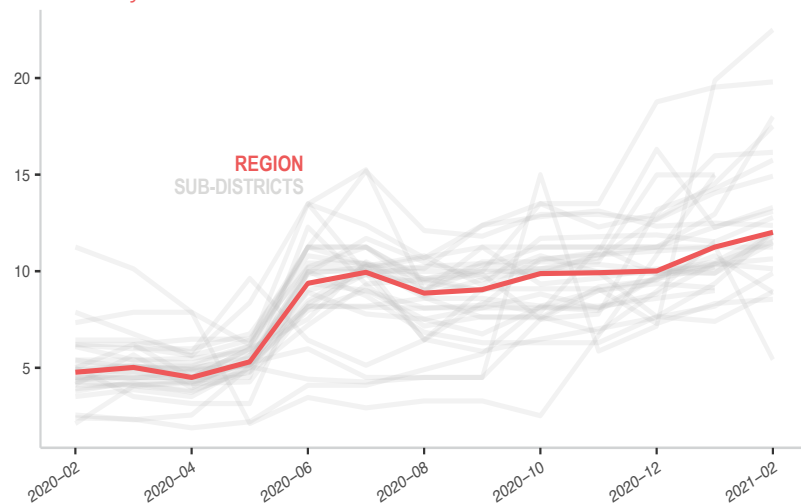
SMEB WATER TRUCKING COST

Sub-districts & Communities, Syrian Pounds



MEDIAN SMEB WATER TRUCKING COSTS, BY MONTH

Thousand Syrian Pounds



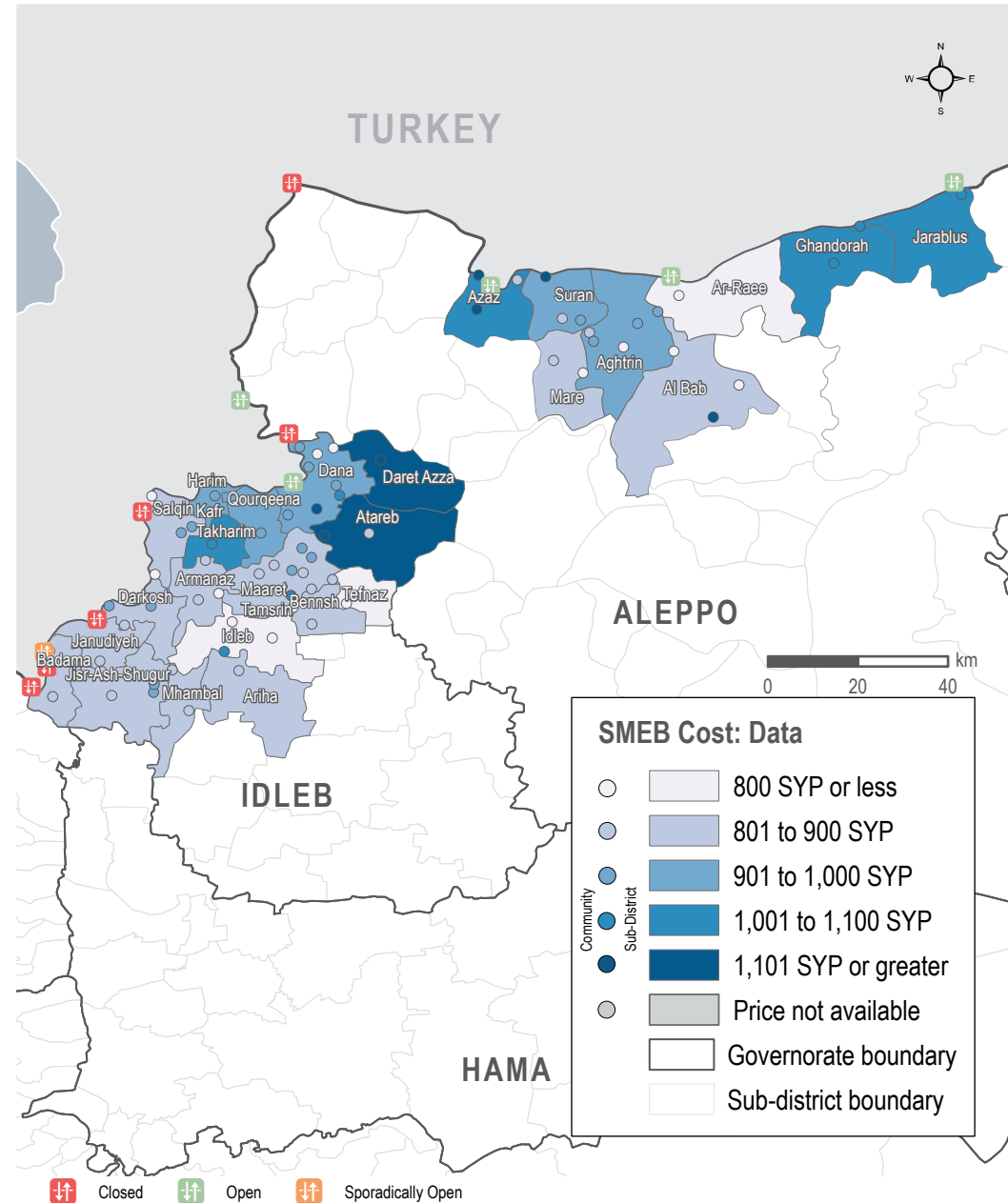
MEDIAN SMEB CELLPHONE DATA PRICE

1GB data, Syrian Pounds

Sub-district	SMEB Data (1GB)	One month change	Six month change	Sub-district	SMEB Data (1GB)	One month change	Six month change
Northwest Syria	900	3%	13%	Harim	1,000	11%	25%
Aghtrin	950	0%	6%	Idleb	800	0%	60%
Al Bab	900	13%	29%	Janudiyeh	900	13%	80%
Ariha	820	37%	37%	Jarablus	1,100	10%	22%
Armanaz	833	4%	-8%	Jisr-Ash-Shugur	900	0%	13%
Ar-Ra'ee	800	0%	33%	Kafr Takharim	1,025	-2%	-16%
Atareb	1,350	17%	35%	Maaret Tamsrin	900	13%	20%
A'zaz	1,100	5%	16%	Mare'	875	-3%	9%
Badama	900	6%	29%	Mhambal	850	6%	31%
Bennsh	850	26%	70%	Qourqeena	925	12%	32%
Dana	1,000	11%	27%	Salqin	900	-10%	13%
Daret Azza	1,200	9%	33%	Suran	913	-24%	-9%
Darkosh	875	9%	46%	Teftnaz	420	-30%	-16%
Ghandorah	1,100	10%	10%				

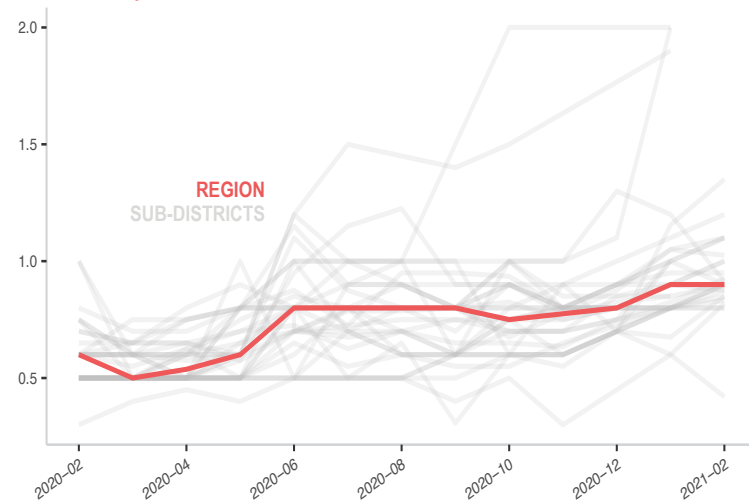
SMEB CELLPHONE DATA COST

Sub-districts & Communities, Syrian Pounds



MEDIAN SMEB CELLPHONE DATA COST, BY MONTH

Thousand Syrian Pounds



MEDIAN TRANSPORT FUEL PRICE

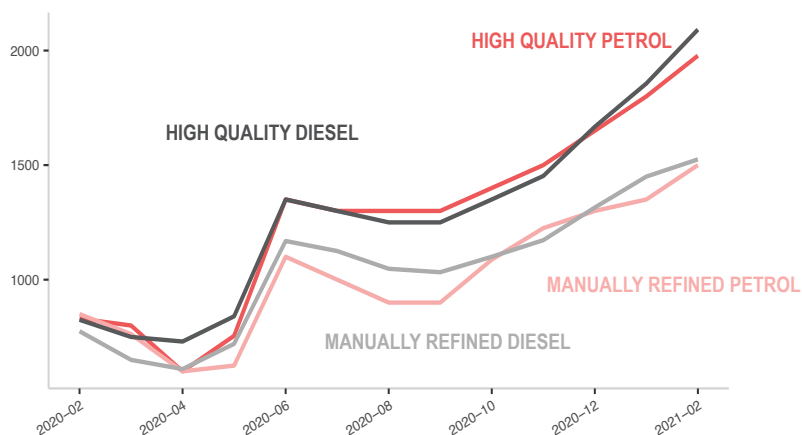
Diesel and Petrol, 1L (High Quality and Manually Refined), Syrian Pounds

Sub-district	Transport Fuel	One month change	Six month change	Sub-district	Transport Fuel	One month change	Six month change
Northwest Syria	1,859	9%	55%	Harim	1,850	8%	53%
Aghtrin	1,650	9%	55%	Idleb	1,890	6%	58%
Al Bab	1,688	6%	55%	Janudiyeh*	1,833	-2%	38%
Ariha*	1,935	3%	56%	Jarablus	1,725	7%	50%
Armanaz	1,954	8%	52%	Jisr-Ash-Shugur	1,858	9%	58%
Ar-Ra'ee	1,817	10%	67%	Kafr Takharim	1,833	6%	38%
Atareb	1,956	17%	61%	Maaret Tamsrin	1,850	8%	54%
A'zaz	1,663	9%	46%	Mare'	1,719	2%	57%
Badama	1,900	13%	52%	Mhambal	1,904	7%	50%
Bennsh	1,861	8%	52%	Qourqeena	1,883	17%	47%
Dana	1,902	11%	59%	Salqin	1,893	7%	60%
Daret Azza	1,908	13%	66%	Suran	1,800	16%	68%
Darkosh	1,860	8%	60%	Teftnaz*	1,983	17%	59%
Ghandorah	1,688	10%	48%				

* For this sub-district, more than 50% of the median prices for the items composing the transport fuel indicator rely on less than 3 observations.

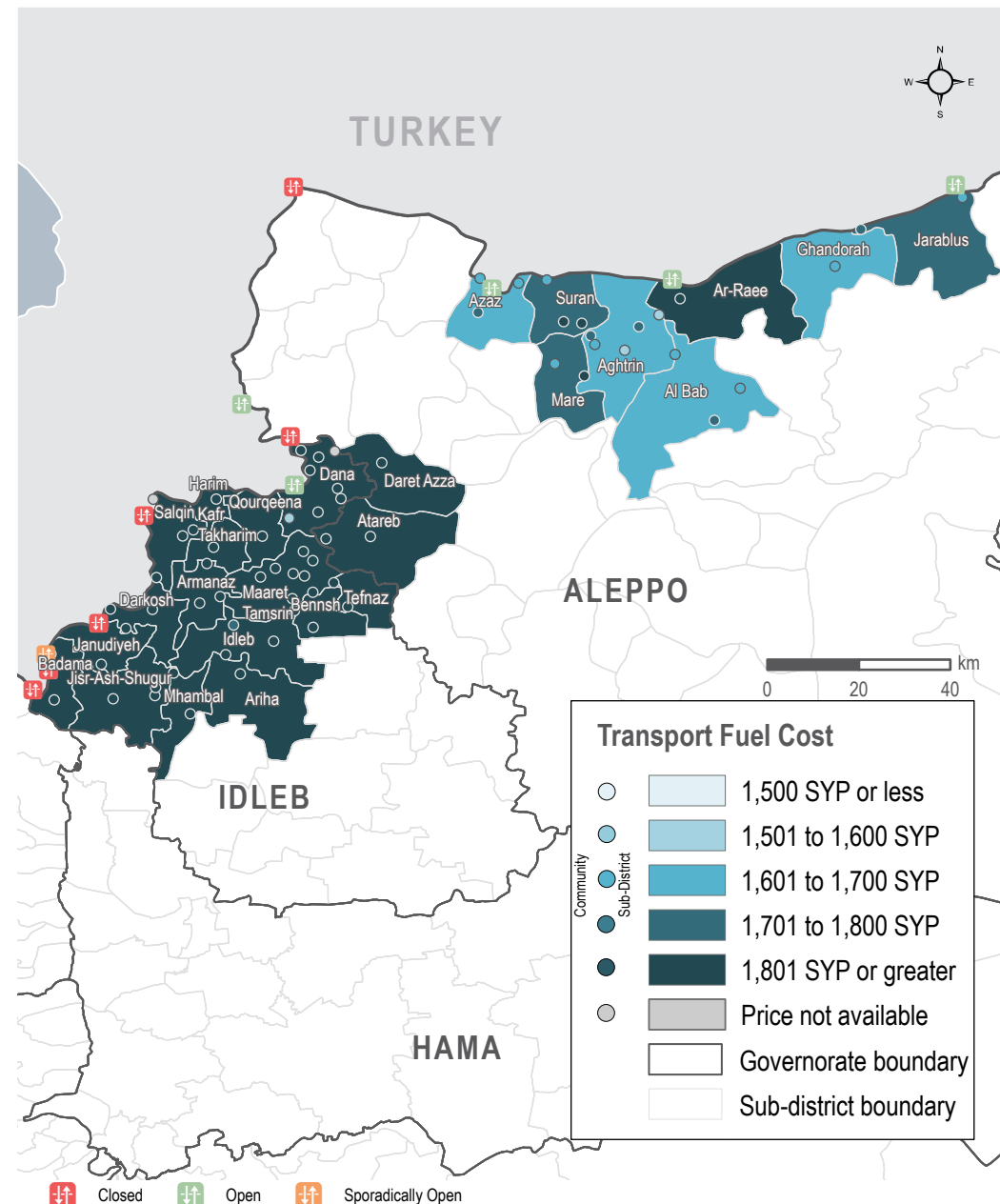
MEDIAN TRANSPORT FUEL COSTS, BY MONTH & TYPE

Syrian Pounds



TRANSPORT FUEL COST

Sub-districts & Communities, Syrian Pounds



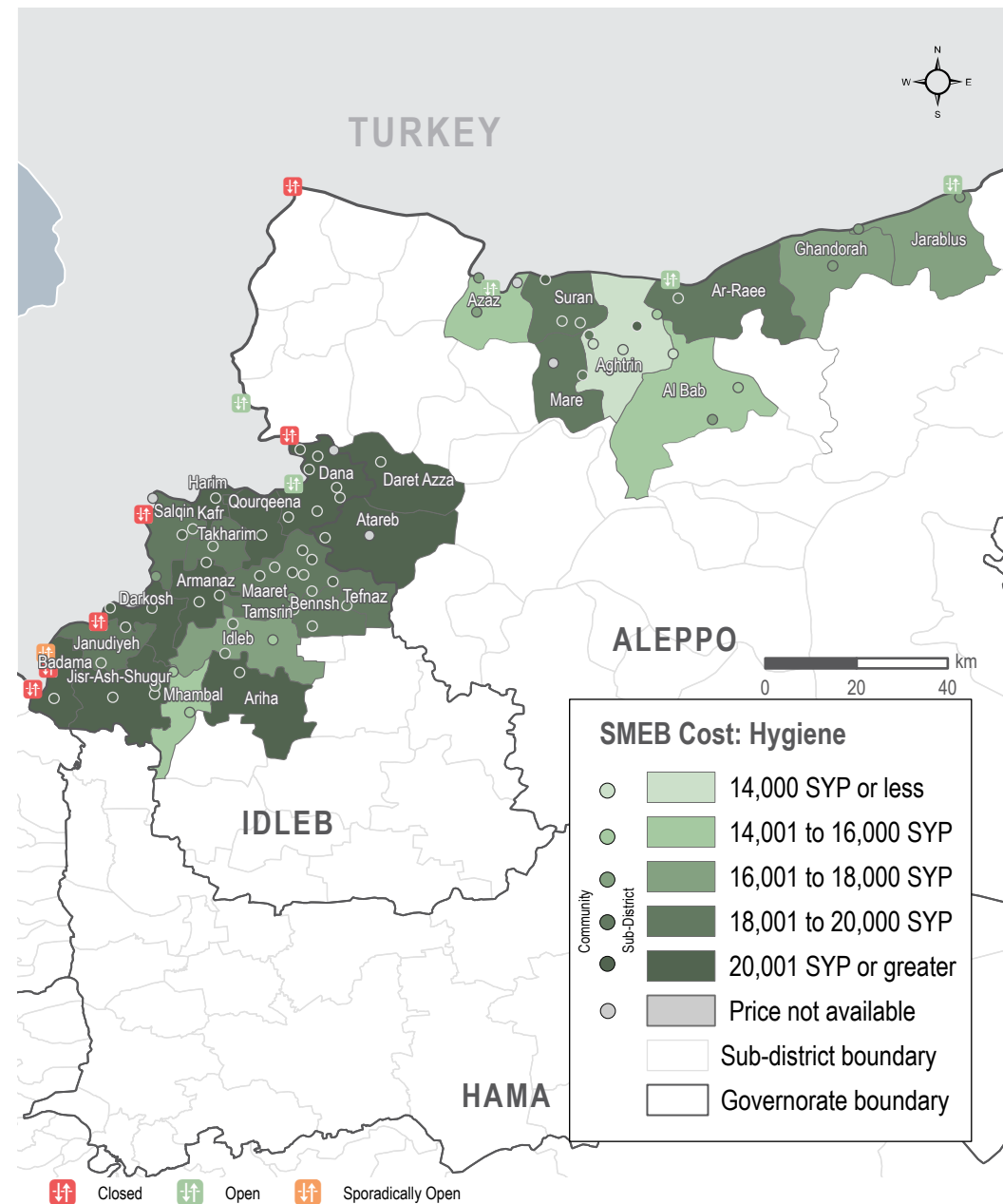
MEDIAN SMEB HYGIENE ITEMS' PRICE

12 bars of soap, 4 packs of 10 sanitary pads, 200g of toothpaste, 3kg of laundry/dish soap, Syrian Pounds

Sub-district	SMEB Hygiene Items	One month change	Six month change	Sub-district	SMEB Hygiene Items	One month change	Six month change
Northwest Syria	19,188	13%	58%	Harim	21,075	27%	87%
Aghtrin	13,551	15%	58%	Idleb	16,815	4%	44%
Al Bab	15,525	1%	19%	Janudiyeh	18,200	NA	NA
Ariha	23,530	5%	61%	Jarablus	17,124	13%	66%
Armanaz	21,375	13%	81%	Jisr-Ash-Shugur	22,060	12%	52%
Ar-Ra'ee	18,593	11%	56%	Kafr Takharim	19,000	12%	56%
Atareb	26,873	-14%	23%	Maaret Tamsrin	19,850	18%	64%
A'zaz	15,225	28%	24%	Mare'	19,050	6%	56%
Badama	20,584	6%	47%	Mhambal	15,569	4%	32%
Bennsh	18,066	0%	33%	Qourqeena	22,000	6%	77%
Dana	22,850	8%	89%	Salqin	19,325	13%	78%
Daret Azza	23,300	5%	51%	Suran	19,713	21%	64%
Darkosh	22,775	10%	98%	Teftnaz	18,086	-8%	34%
Ghandorah	16,730	0%	38%				

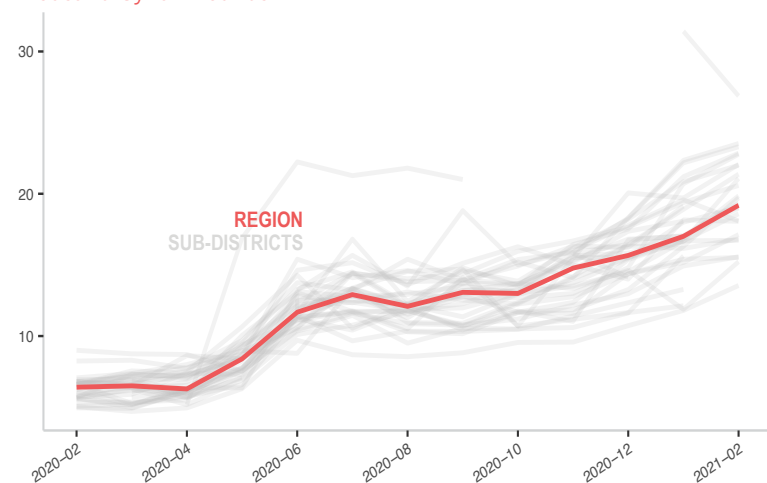
SMEB HYGIENE ITEMS' COST

Sub-districts & Communities, Syrian Pounds



MEDIAN SMEB HYGIENE ITEMS' COSTS, BY MONTH

Thousand Syrian Pounds



MEDIAN WINTERISATION ITEMS' PRICE

Per 1 piece/pair, Syrian Pounds

Sub-district	Jerrycan	Plastic sheet	Winter carpet	Kerosene/diesel heater	Winter blanket	Mattress	Solid fuel stove	Fire extinguisher	Fire blanket
Northwest Syria	3,850	17,500	85,000	40,000	12,200	15,000	44,500	45,000	29,000
Aghtrin	3,250	18,000	110,000*	45,000	12,000	17,000	36,500	NA	NA
Al Bab	3,000	10,700	135,000	40,000	12,900	17,000	36,000	NA	NA
Ariha	NA	NA	NA	NA	NA	NA	NA	NA	NA
Armanaz	3,600	14,100	96,000	36,000	12,950	17,200	49,000	NA	NA
Ar-Ra'ee	3,500	23,000	75,000	45,000	27,500	14,500	42,500	NA	NA
Atareb	4,000*	21,250*	34,000*	31,000*	6,000*	12,000*	45,000*	NA	NA
A'zaz	2,750	15,000	109,000	44,000	10,750	15,500	34,000	NA	NA
Badama	5,000	17,500	85,000	43,000	12,500	15,000	80,000	NA	NA
Bennsh	3,850	22,750	38,750	29,900	7,500	16,000	33,000	NA	NA
Dana	3,775	15,300	85,000	44,000	12,200	15,000	51,000	45,000	22,000
Daret Azza	3,000	11,500	135,000	45,000	16,000	17,500	42,000	NA	NA
Darkosh	4,700	14,250	85,000	39,250	11,750	12,600	38,250	NA	NA
Ghandorah	3,500*	22,500*	90,000*	57,000*	10,500*	16,500*	33,000*	NA	NA
Harim	5,500	18,500	84,000	45,000	12,000	15,000	78,000	NA	NA
Idleb	3,500	8,000	43,500	25,750	8,850	7,750	35,000	48,000	36,000
Janudiyeh	6,000*	18,000*	83,000*	46,000*	12,500*	15,000*	80,000*	NA	NA
Jarablus	3,900	24,000	91,000	60,600	6,000	13,600	42,700	NA	NA
Jisr-Ash-Shugur	4,000	16,500	86,000	45,000	11,000	15,000	28,000	35,000*	NA
Kafr Takharim	2,500	12,000	100,000	36,000	14,000	16,500	45,000	NA	NA
Maaret Tamsrin	4,500	17,500	72,000	38,000	9,500	15,000	75,000	NA	NA
Mare'	4,500	22,000	77,500	40,000	13,950	15,000	77,500	NA	NA
Mhambal	3,900*	25,000*	110,000*	36,000*	35,000*	13,500*	66,000*	NA	NA
Qourqeena	5,250	18,500	82,500	45,500	12,750	16,500	76,000	NA	NA
Salqin	3,000	11,500	90,000	38,375	13,750	20,000	44,000	NA	NA
Suran	4,750	14,350	82,000	40,000	12,900	17,000	57,000	NA	NA
Teftnaz	3,450	32,640	32,130	25,956	6,120	21,630	NA	NA	NA

* For these sub-districts, the median price are relying on less than 3 observations.

** NA means data not available.

MEDIAN WINTERISATION ITEMS' PRICE - CLOTHES

Per 1 piece/pair, Syrian Pounds

Sub-district	Adult's hat	Children's hat	Second hand men's winter jacket	Second hand women's winter jacket	Second hand children's winter jacket	Second hand men's winter boots	Second hand women's winter boots	Second hand children's winter boots	Second hand adult's hat	Second hand children's hat	Men's winter jacket	Women's winter jacket	Children's winter jacket	Men's winter boots	Women's winter boots	Children's winter boots
Northwest Syria	3,200	2,000	10,000	8,000	4,750	8,000	6,000	4,000	1,500	1,000	42,750	52,500	29,000	16,000	16,500	9,500
Aghtrin	3,500	2,000	6,750	5,500	4,000	7,000	4,750	3,750	1,500	1,000	42,000	45,000	28,000	17,500	15,500	9,500
Al Bab	3,000	2,400	7,000*	8,000*	3,750*	6,250*	5,500*	3,750*	1,500*	1,000*	38,500	35,000	22,500	17,500	16,000	9,250
Ariha	2,800*	2,000*	NA	NA	NA	NA	NA	NA	NA	NA	NA	NA	NA	NA	NA	NA
Armanaz	4,000	2,250	10,500	12,500	7,500	8,500	7,575	5,688	2,000	1,000	42,750	59,000	25,250	13,600	14,250	9,000
Ar-Ra'ee	3,500*	2,500*	6,500*	6,000*	4,750*	5,500*	4,500*	3,750*	1,250*	1,000*	68,000*	72,500*	50,000*	17,500*	20,000*	13,000*
Atareb	2,000*	1,500*	6,000*	6,000*	4,000*	5,500*	5,500*	4,000*	NA	NA	14,000*	15,000*	9,000*	10,500*	13,000*	8,000*
A'zaz	3,500	2,500	10,000	6,000	3,000	8,000	6,000	3,000	1,000	1,000	38,000	35,000	32,000	12,000	10,500	6,000
Badama	2,550	1,650	11,500*	13,500*	7,000*	9,500*	10,000*	4,500*	1,500*	950*	43,000	52,500	30,000	17,750	21,250	11,500
Bennsh	2,500	1,200	4,200	2,950	2,800	7,150	4,200	2,800	800	800	17,500	21,000	9,500	9,500	8,800	9,000
Dana	3,500	2,000	13,100	15,000	7,400	9,750	9,750	6,000	1,675	988	45,000	55,000	30,000	16,000	18,500	10,000
Daret Azza	3,500*	2,000*	10,000*	8,000*	4,200*	5,500*	5,400*	3,500*	1,000*	1,000*	30,250*	23,000*	15,800*	13,000*	11,950*	7,850*
Darkosh	3,750	2,200	11,500*	12,500*	5,000*	9,000*	10,000*	4,000*	2,000*	1,000*	44,000	57,500	33,000	15,700	16,500	8,750
Ghandorah	3,000*	2,500*	6,500*	6,000*	4,250*	7,500*	5,500*	4,750*	1,500*	1,000*	30,000*	33,000*	17,000*	22,000*	14,000*	12,000*
Harim	3,250*	1,500*	13,000*	16,000*	7,000*	10,000*	11,000*	5,000*	1,600*	900*	45,000*	56,000*	31,000*	16,250*	17,750*	9,750*
Idleb	3,250	2,000	12,250*	14,750*	6,000*	12,500*	12,500*	4,750*	1,500*	1,100*	40,500	47,500	23,500	18,000	17,350	9,750
Janudiyeh	3,000*	2,000*	13,000*	15,000*	7,000*	10,000*	11,000*	5,500*	1,500*	1,000*	45,000*	57,500*	32,500*	16,000*	18,000*	9,750*
Jarablus	2,750*	1,900*	7,000	6,000	3,200	5,500	4,500	2,800	1,000	700	39,500*	32,500*	23,250*	21,750*	16,000*	11,500*
Jisr-Ash-Shugur	3,000	1,600	12,000	13,000	6,500	9,000	10,000	4,000	1,500	800	43,000	49,000	29,000	16,000	18,000	8,000
Kafr Takharim	4,000	2,500	4,750*	5,500*	3,500*	2,000*	1,500*	1,500*	1,000*	500*	59,000	57,000	26,500	15,250	14,500	11,250
Maaret Tamsrin	3,000	1,560	11,000	10,000	6,500	7,000	6,500	4,350	1,500	900	41,750	47,250	25,250	15,750	17,000	9,000
Mare'	4,000	2,000	9,500*	12,000*	6,250*	8,000*	8,000*	4,500*	1,500*	1,250*	45,000	60,000	30,000	20,000	20,000	12,000
Mhambal	3,150*	2,000*	15,250*	22,750*	7,000*	9,250*	9,600*	5,150*	1,200*	1,000*	55,750*	59,000*	29,000*	16,150*	16,750*	8,750*
Qourqeena	3,250*	1,750*	5,250	1,750	1,350	4,500	1,250	1,900	550	1,225	40,000	65,000	33,000	10,000	12,500	7,500
Salqin	3,000	2,000	16,000*	19,500*	11,500*	8,000*	8,500*	5,750*	1,900*	1,250*	45,000	53,000	32,000	19,000	20,000	15,000
Suran	3,500	2,000	7,000*	6,500*	4,500*	8,000*	6,000*	5,000*	1,500*	1,000*	44,000	60,000	32,000	16,000	19,000	11,000
Teftnaz	2,500	1,300	4,300	2,900	2,900	7,100	4,300	2,900	900	900	17,300	20,900	9,200	9,300	8,600	8,100

* For these sub-districts, the median price are relying on less than 3 observations.

** NA means data not available.

MEDIAN ALTERNATIVE FUELS PRICE

Per 1 kilo, Syrian Pounds

Sub-district	Firewood	Olive residues	Pistachio shells	Coal
Northwest Syria	410	390	460	375
Aghtrin	405	390	470	400
Al Bab	405	370	420	338
Ariha	NA	NA	NA	NA
Armanaz	385	380	415	390
Ar-Ra'ee	400	350	NA	300
Atareb	405	350	475	450
A'zaz	380	375	380	248
Badama	412	395	455	350
Bennsh	398	450	505	472
Dana	425	380	462	340
Daret Azza	425	400	NA	500
Darkosh	400	350	465*	335
Ghandorah	350	285*	NA	432
Harim	425	385	460	350
Idleb	388	400	438	358
Janudiyeh	412*	425	485*	350*
Jarablus	342	296	443	458
Jisr-Ash-Shugur	425	378	450	328
Kafr Takharim	500	400	550	375
Maaret Tamsrin	428	400	462	350
Mare'	475	400	425*	400
Mhambal	295	422	NA	482
Qourqeena	425	380	470	335
Salqin	440	412	450	392
Suran	410	395	350	410
Teftnaz	420*	525	560*	545

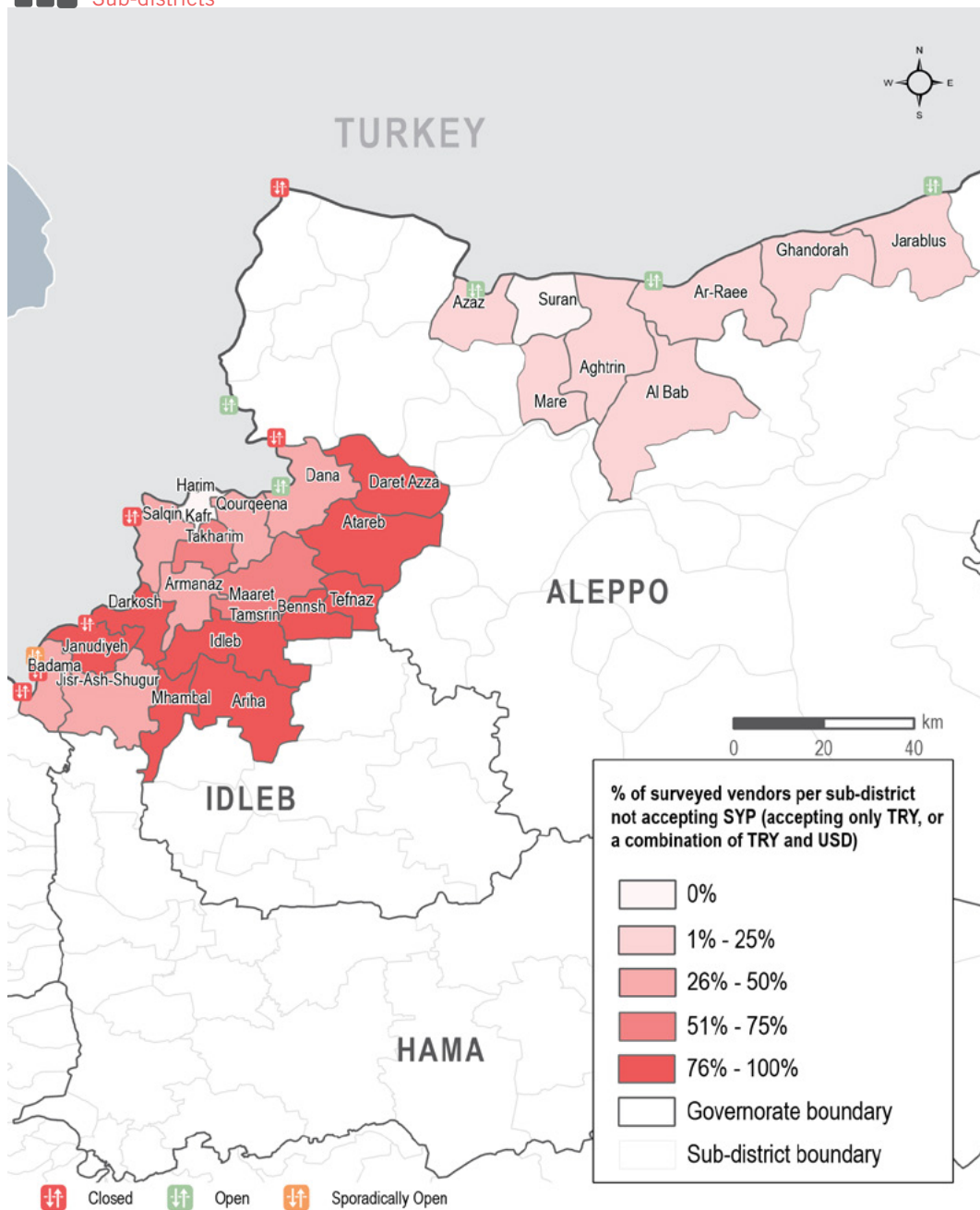
* For these sub-districts, the median price are relying on less than 3 observations.

** NA means data not available.



SURVEYED VENDORS NOT ACCEPTING SYRIAN POUNDS

Sub-districts



MARKET FUNCTIONALITY

In February, of the 2,230 surveyed vendors, 1 vendor in Aleppo governorate and 8 vendors in Idleb governorate reported having closed their shops.



SUPPLY CHALLENGES

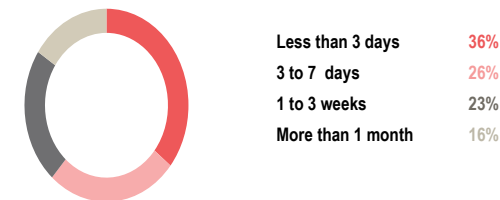
During the data collection period, vendor supply challenges and their prevalence in NWS fluctuated somewhat relative to December and January. Of the 2,230 surveyed vendors in NWS, 83% reported facing one or more supply challenges in February (recorded at 86% in December and 81% in January). As in previous months, price inflation was the most commonly reported supply challenge, reported by 81% of vendors. This was most commonly reported in Idleb governorate where 84% of vendors reported this issue. As a seemingly widespread supply challenge, price inflation issues may also impact vendors' ability to keep markets stocked with essential items. Beyond price inflation, 5% of all surveyed vendors reported that their suppliers had limited supply and 4% reported that the [closure of border crossings](#) created a supply challenge.



RESTOCKING

While supply challenges were reported, most vendors reported that they would be able to restock if they were to run out of supplies. 57 out of the 2,230 surveyed vendors reported that they would be unable to do so, and a further 87 vendors reported "not sure" if they would be able to restock if they were to run out of supplies. Surveyed vendors were asked after how many days they would hypothetically run out of stock if supply was to be cut; 36% of surveyed vendors reported that they would run out of stock in less than 3 days (this remains the same as in December and January) and 26% reported they would run out in 3 to 7 days (see figure 2). Among surveyed vendors, water vendors (76%) vegetable vendors (71%) and butchers (68%) most frequently reported that they would run out in less than 3 days if their supply lines were cut. On average, 36% of all surveyed vendors reported that they would run out in less than 3 days if their supply lines were cut, which remained the same as in January.

Figure 2: Reported number of days before all types of vendors would hypothetically run out of stock, if supply lines were to be cut (2,224 respondents)



AVAILABILITY OF USD BANKNOTES

Of the 193 surveyed informal exchange vendors who were asked if they had limited stock of any USD banknote denominations, 100% of surveyed vendors in Idleb governorate and 86% of surveyed vendors in Aleppo governorate reported having limited stock of one or more denominations.

Shortages of small banknotes were more commonly reported by surveyed vendors in Idleb and Aleppo governorate, most frequently for 10 USD banknotes (reported by 68% of all surveyed vendors) and 20 USD banknotes (65% of surveyed vendors). 5 USD banknotes were reported as being in limited stock by 62% of all surveyed vendors.



CURRENCIES ACCEPTED

Surveyed vendors were also asked about the type(s) of currencies they accepted in their shops. In February, 91% of surveyed vendors reported selling their goods not exclusively in SYP or not in SYP at all. Significant differences in currency usage between governorates were also noted; while 29% of surveyed vendors in Aleppo reported selling their goods in SYP only, no vendors in Idleb reported the same (0%). Surveyed vendors in Idleb, however, more commonly reported selling items in TRY only (reported by 49%), compared to only 9% of vendors in Aleppo who reported the same. Additionally, 7% of vendors in Idleb reporting accepting currency combinations that included the USD (a 12% decrease since January) compared to 13% of vendors in Aleppo (no change from January). In Aleppo, vendors most commonly reported selling items in both SYP and TRY (45%), but vendors in Idleb most commonly reported selling items in TRY only (49%, a 4% increase since January).

MEDIAN PRICE OF COVID-19 ITEMS

Syrian Pounds

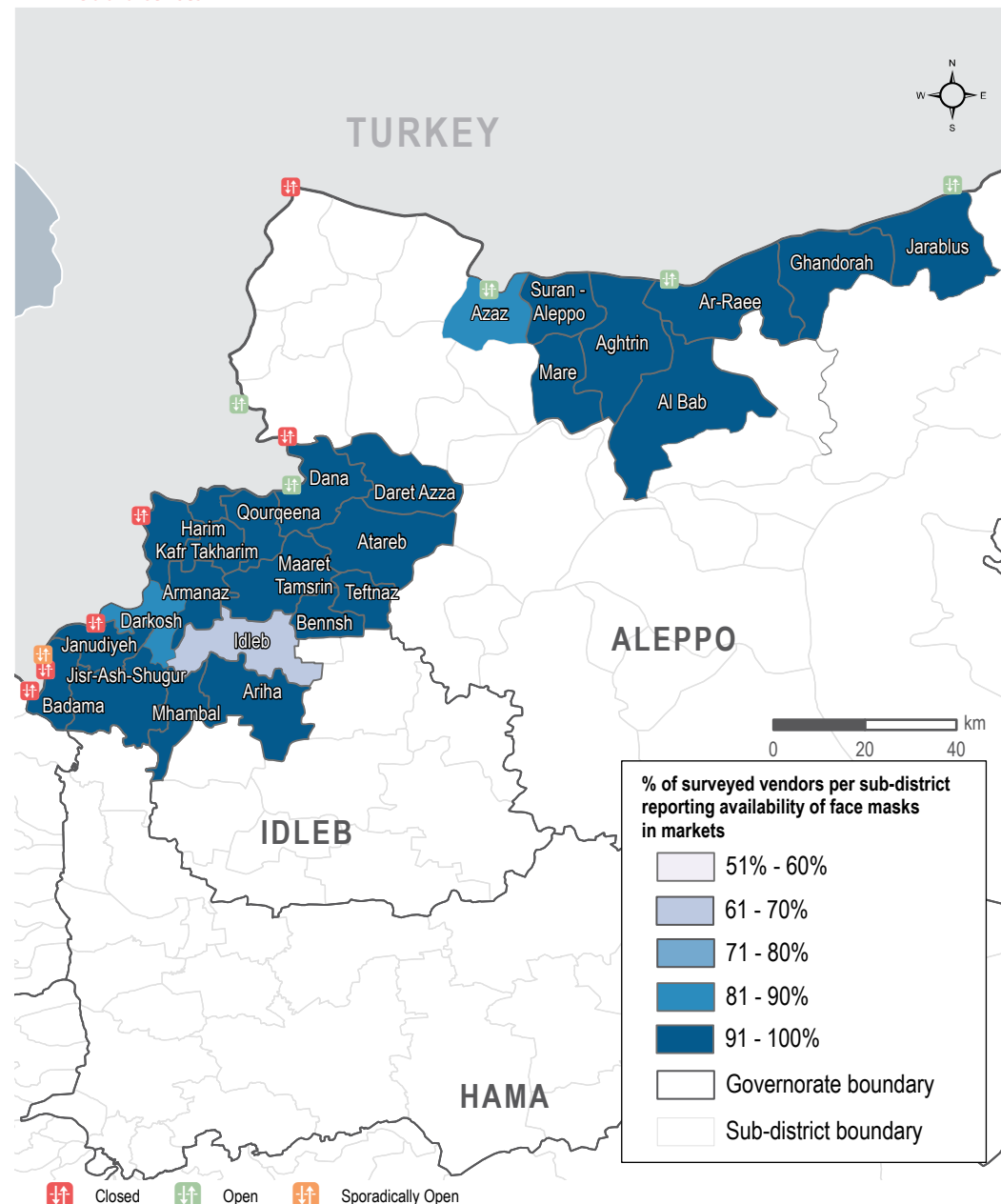
Sub-district	Face mask (1 piece)	Plastic gloves (box of 100)	Sterile alcohol (1 litre)	Hand sanitiser (500 ml)	Bottled bleach (1 litre)	Trash bags (roll of 30)
Northwest Syria	418	19,750	7,500	3,750	1,690	3,175
Aghtrin	400	18,500	6,800	3,500	1,500	2,800
Al Bab	300	22,000	6,800	2,500	1,800	2,200
Ariha	410*	24,000	NA	NA	1,800	NA
Armanaz	415	20,000	8,550	5,130	1,740	3,400
Ar-Ra'ee	700	20,000	7,500	3,000	2,000	2,800
Atareb	350	15,500	7,750	6,150	1,850	3,100
A'zaz	500	23,000	9,925	3,500	1,800	3,000
Badama	500	17,000	7,200	4,500	1,700	3,500
Bennsh	500	24,500	11,000	6,500	1,550	5,460
Dana	415	16,000	7,562	4,300	1,800	3,500
Daret Azza	400	23,500	7,500	4,000	1,500	2,900
Darkosh	450	19,500	18,000	6,700	1,680	3,900
Ghandorah	300	20,700	6,000	5,250	1,600	1,590
Harim	450	17,000	5,400	3,200	2,000	3,500
Idleb	400	12,450	8,400	5,800	1,400	4,000
Janudiyeh	400	18,000	6,000	3,500	1,700*	NA
Jarablus	400	21,000	7,200	3,750	1,600	1,620
Jisr-Ash-Shugur	420	16,750	6,750	3,600	1,600	3,800
Kafr Takharim	500	17,500	10,000	4,000	1,500	2,800
Maaret Tamsrin	435	17,500	5,775	3,500	1,700	3,500
Mare'	500	22,000	6,800	3,500	1,600	3,000
Mhambal	500	32,250	19,000	5,900	1,500	2,100
Qourqeena	400	17,000	7,000	3,700	2,000	3,250
Salqin	475	16,500	9,000	4,250	1,625	3,500
Suran	300	21,000	6,800	2,500	1,800	2,900
Teftnaz	450	28,000	10,200	3,200	1,680	5,600

* For these sub-districts, the median price are relying on less than 3 observations.

** NA means data not available.

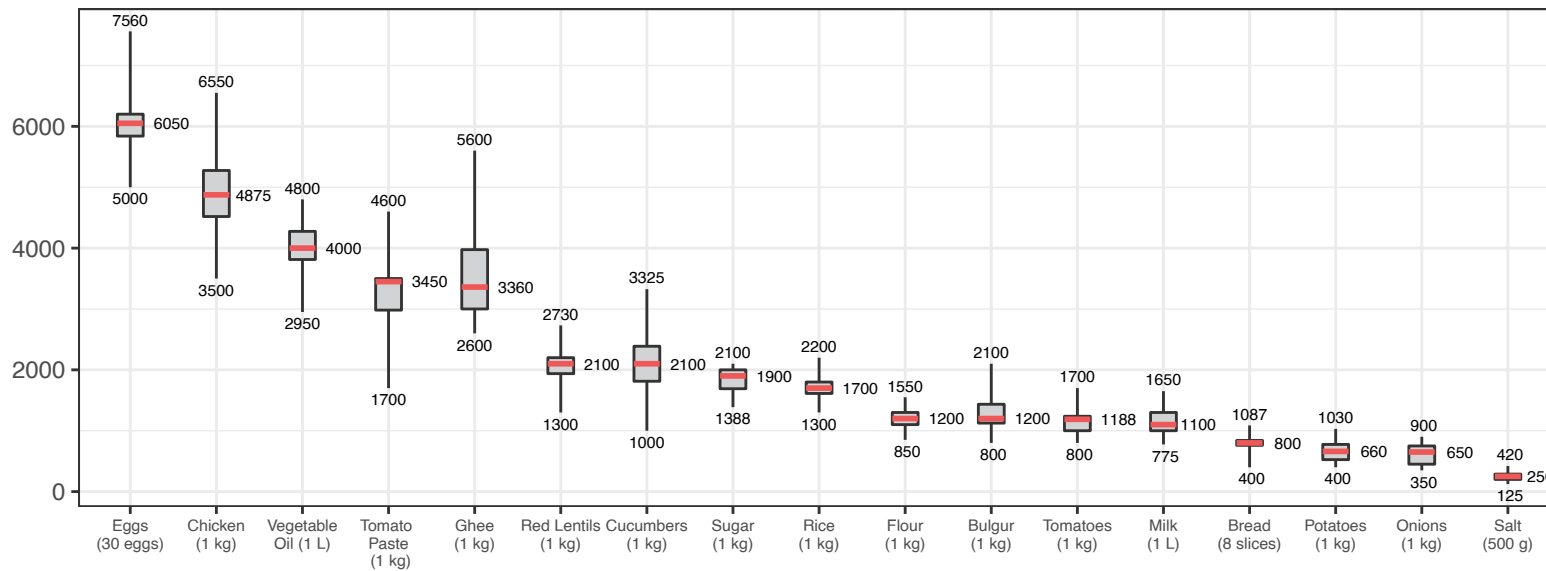
AVAILABILITY OF FACE MASKS

Sub-districts



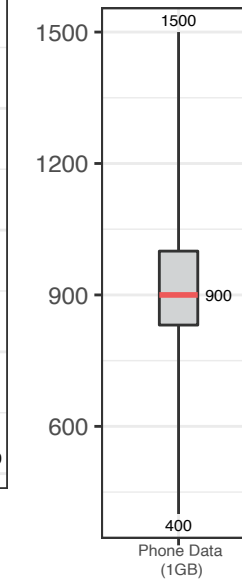
ASSESSED FOOD ITEMS

Syrian Pounds



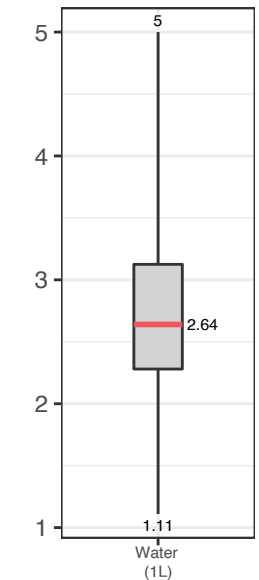
CELLPHONE DATA

Syrian Pounds



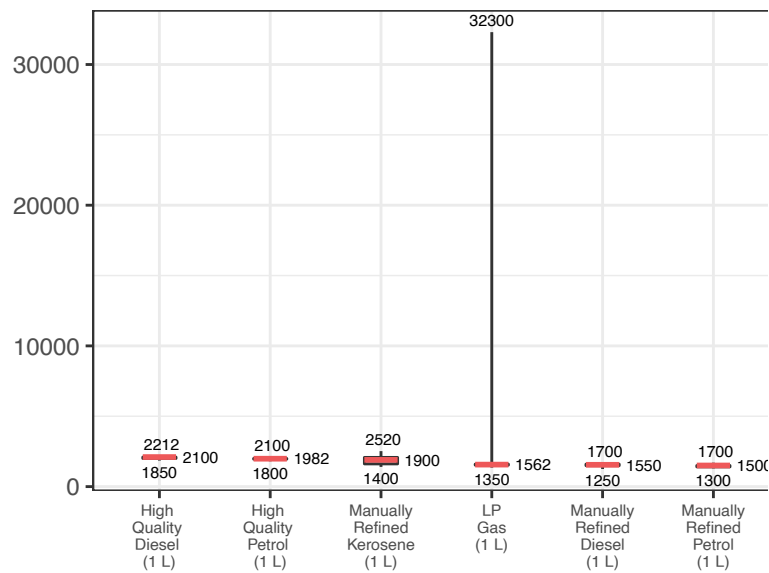
WATER TRUCKING

Syrian Pounds



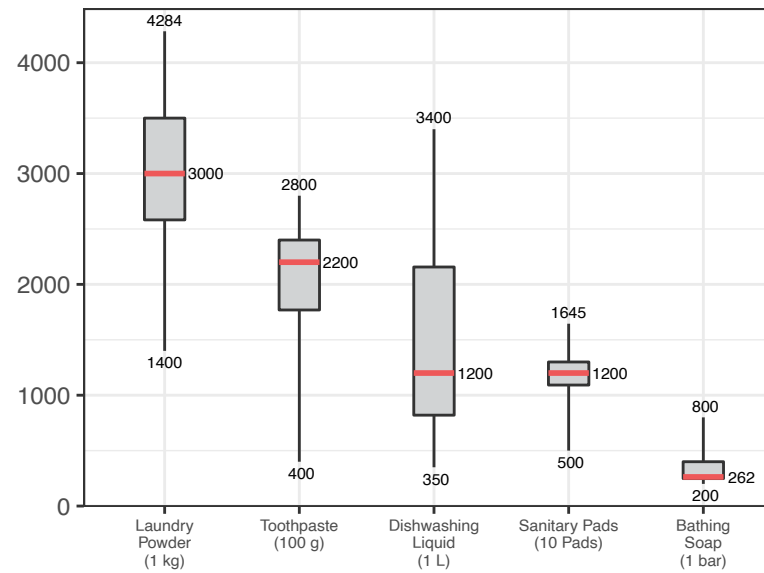
ASSESSED FUEL ITEMS

Syrian Pounds

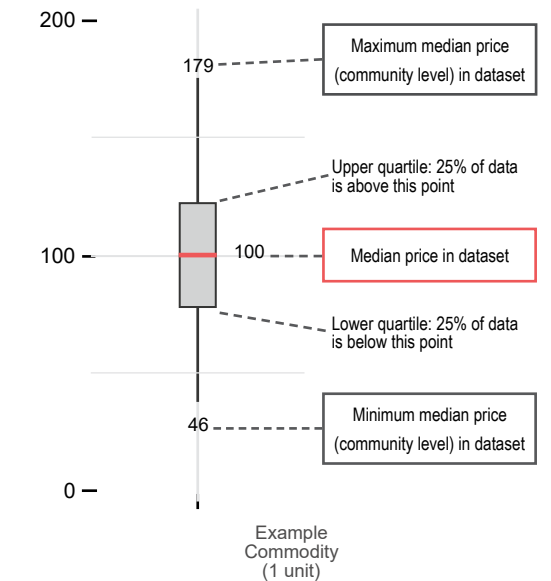


ASSESSED HYGIENE ITEMS

Syrian Pounds



READING BOXPLOTS



METHODOLOGY

In order to be included in the Syria Market Monitoring Exercise, markets must be permanent in nature, large enough to support at least two wholesalers, and diverse enough to provide a sufficient variety of goods and commodities. Additionally, the shops surveyed within each market must be housed in permanent structures and must sell certain items to be eligible for inclusion. Participating organisations train their enumerators on the Market Monitoring methodology and data collection tools using standard training materials developed by REACH. Each enumerator aims to assess three to five shops of each type in the main market in their assigned community/ neighbourhood, using surveys to collect information about the cheapest prices of each item and whether there are any barriers in the supply chain. In sub-districts where direct surveying by enumerators is not possible, data collection is conducted remotely through key informants such as shop owners, suppliers and consumers. A survey form is deployed on KoBo each month to capture price and stock information from different types of establishments, including grocery stores, fuel traders, currency exchange shops, water trucking services and mobile phone shops, among others. Nearly all participating partners submit their data to these KoBo forms, using the KoBoCollect Android app to upload data. A small number of partners, by prior permission, collect data using fully harmonised data collection tools deployed on other platforms, then submit their raw data to REACH for standardisation, compilation and cleaning.

Following data collection, REACH compiles and cleans all partners' data, normalising prices and cross-checking outliers. The cleaned data is then analysed by SMEB costs, components of the SMEB, and by commodities. These trends are observed at the sub-district-level and, when possible, at the community-level. Prices are divided into quartiles and boxplots are created

to assist CWG members in understanding the distribution of prices across the northeast and northwest of Syria. To illustrate local variations in prices and availability, REACH uses the collected data to map the price of the SMEB in each sub-district and adds illustrations of surrounding border crossings, with data sourced from the United Nations Office for the Coordination of Humanitarian Affairs (OCHA). In addition, each SMEB component costs and transport fuel prices are graphed to visualise trends over time.

The cleaned datasets are available on the [Humanitarian Data Exchange](#) website and the [REACH Resource Centre](#) and are distributed to all participating partners, as well as to interested clusters and the broader humanitarian community.

Calculating 'median cheapest price'

The regional figures are calculated by taking the median of the minimum-reported prices of a region's sub-districts. In turn, the sub-district medians are calculated using the Market Monitoring base-data.

Calculating Survival Minimum Expenditure Basket (SMEB) costs

The cost of a SMEB is calculated for each assessed sub-district by calculating the median cheapest price of each SMEB commodity in that sub-district, then multiplying these medians by the number of units that an average Syrian household requires to purchase in a month. The composition of the SMEB can be found on [page 1](#). SMEB vegetables include potatoes, tomatoes, onions, and cucumbers.

Calculating price trends over time

One month and six-month price changes and trends in this factsheet are calculated only with the comparable assessed communities of a sub-district with consistent coverage across months. On the other hand, in the dataset, medians are calculated taking all

assessed communities for the current month in consideration. Therefore, prices and percentage changes within the tables of this factsheet may slightly differ from the current month's dataset medians. In the narrative, both regional median SMEB values are shared; the SMEB value including all assessed communities that specific month, and the SMEB value only taking in consideration communities with consistent coverage since the previous month.

Changes to coverage

Given security and access constraints in the south of Syria, data collection has been unable to take place since July 2018. Escalation of conflict in October 2019 has resulted in limited coverage in northeast Syria in the months following the escalation.

Challenges and limitations

As the Syria Market Monitoring Exercise currently includes 26 partners based in 2 hubs, achieving a consistent approach is inherently challenging. Participating organisations are therefore requested to adopt harmonised data collection methodologies and tools to ensure that the data uploaded is as accurate as possible. Since this exercise collects data directly from vendors and relies on partner organisations for its wide coverage, Market Monitoring may sporadically lose coverage temporarily or for longer periods of time due to challenges in accessing locations or loss in the shared data collection capacity of the project. This impacts the ability to report on trends, as can be seen in the line graphs and 'NA' values in the tables.

ABOUT REACH

REACH Initiative facilitates the development of information tools and products that enhance the capacity of aid actors to make evidence-based decisions in emergency, recovery and development contexts. The methodologies used by REACH include primary data collection and in-depth analysis, and all activities are conducted through inter-agency aid coordination mechanisms. REACH is a joint initiative of IMPACT Initiatives, ACTED and the United Nations Institute for Training and Research - Operational Satellite Applications Programme (UNITAR-UNOSAT). For more information please visit our website:

www.reach-initiative.org. You can contact us directly at: geneva@reach-initiative.org and follow us on Twitter [@REACH_info](https://twitter.com/REACH_info)

ABOUT THE CASH WORKING GROUP

The Cash Working Group (CWG) was established in May 2014 to analyse the impact of the ongoing conflict on markets in Syria and guide the implementation of humanitarian cash and voucher programmes within those markets. REACH and the CWG have been partners on the Syria Market Monitoring Exercise since early 2015.

About REACH's COVID-19 response

As an initiative deployed in many vulnerable and crisis-affected countries, REACH is deeply concerned by the devastating impact the COVID-19 pandemic may have on the millions of affected people we seek to serve. REACH is currently working with Cash Working Groups and partners to scale up its programming in response to this pandemic, with the goal of identifying practical ways to inform humanitarian responses in the countries where we operate. COVID-19-relevant market monitoring and market assessments are a key area where REACH aims to leverage its existing expertise to help humanitarian actors understand the impact of changing restrictions on markets and trade. Updates regarding REACH's response to COVID-19 can be found in a [devoted thread](#) on the REACH website. Contact geneva@impact-initiatives.org for further information.