



IDP Camp Profile - Laylan IDP

Kirkuk, Iraq
August 2016

Management agency: UNHCR
Manager/Focal point: Najat muhammed abdulla
Phone number: 7701315746
Email: n/a
Registration actor: IRD/ UNHCR

Summary

This profile provides an overview of conditions in Laylan IDP camp. Primary data was collected through household surveys on 25-08-16. This was the first round of data collection for this camp. Households were randomly sampled to a 95% confidence and 10% margin of error, based on population figures provided by CCCM. In some cases, additional information from camp managers has been used to support findings. .

Camp Overview

of individuals: 9318
of households: 1796
Date opened: 19-11-14
Occupied number: 2004
Ongoing extension: No
Planned capacity: 4008
Camp area: 390,882

Demographics

51% male / 49% female

2% | Over 60 | 2%
18% | 18-59 | 18%
9% | 12-17 | 9%
10% | 6-11 | 9%
12% | 0-5 | 11%

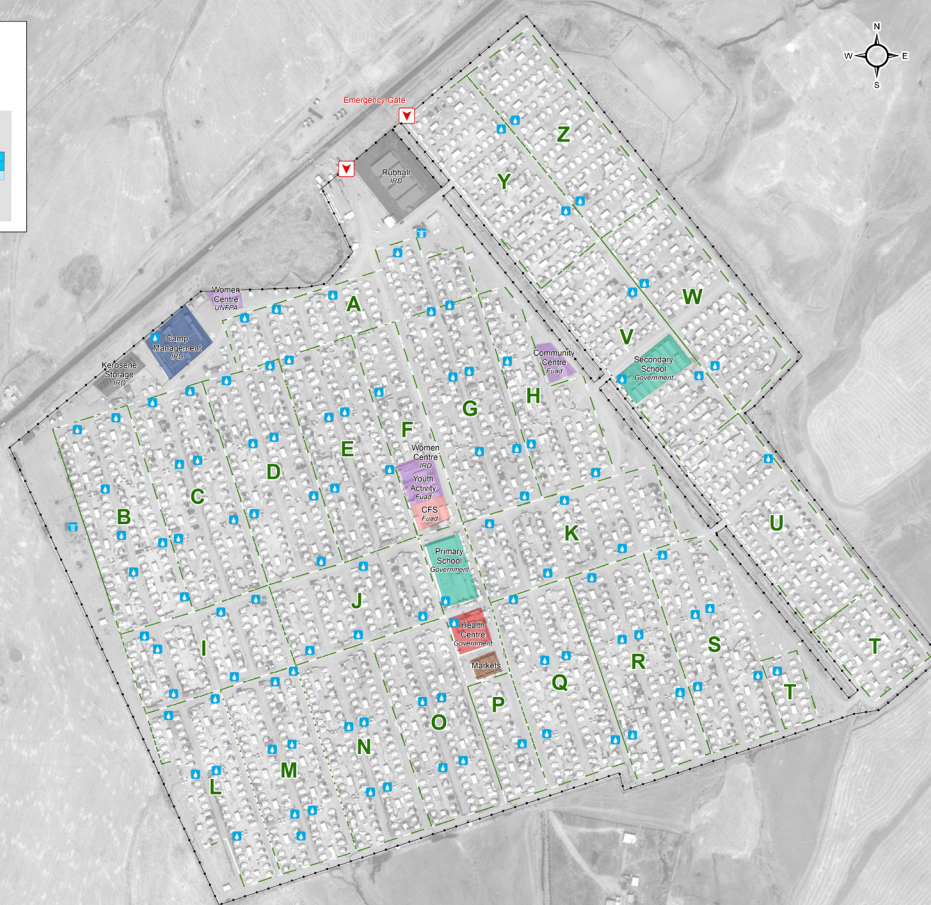
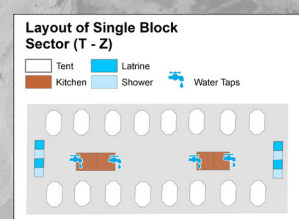
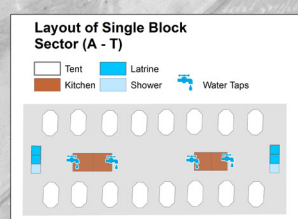


Location Map



IDP Camp Map - Laylan IDP

Lat. 35° 19' 46.44" N Long. 44° 31' 48.575" E



Sectoral Minimum Standards

		Target	Previous Round	Current Round	Achievement
Education	% of children aged 6-11 attending formal school	100%	n/a	68%	●
	% of children aged 12-17 attending formal school	100%	n/a	54%	●
Food	% of households accessed Family Food Parcel or equivalent in the past month	100%	n/a	59%	●
Health	Health services are available on-site or within walking distance	Yes	n/a	Yes	●
CCCM	Average open area per household	min. 30m ²	n/a	184m ²	●
Protection	% of IDPs registered on an individual basis (MODM/DDM)	100%	n/a	94%	●
	% of households accessed shelter assistance since arrival at the camp	100%	n/a	35%	●
	Average covered area per person	min. 3.5m ²	n/a	3.7m ²	●
Shelter	Average number of individuals per shelter	max.5	n/a	5	●
	# of persons per latrine	max. 20	n/a	35	●
	# of persons per shower	max. 20	n/a	76	●
	Frequency of solid waste disposal at least weekly	min. weekly	n/a	No	●

*GPS tracking of camp infrastructure was not possible this round due to restrictions from authorities. Area calculations subsequently could not be determined.
Targets based on minimum standards agreed with the CCCM Cluster, Iraq. Findings based on household-level data, enumerator field observations, and camp management documentation
● Minimum standard reached, ● More than 50% minimum standard reached, ● Less than 50% of minimum standard reached or not at all





IDP Camp Profile - Laylan IDP

Kirkuk, Iraq
August 2016

Management agency: UNHCR
Manager/Focal point: Najat muhammed abdulla
Phone number: 7701315746
Email: n/a
Registration actor: IRD/ UNHCR

Shelter

Top three observed shelter types*

Tent with brick walls	91%	<div></div>
Permanent structure	9%	<div></div>
n/a	n/a	

*Households were asked to select all shelter typologies within household.

Winterisation and NFI items

77%	reported a second fly sheet
16%	reported access to a heater
40%	reported at least one blanket per person
0%	reported at least one mattress per person
2.5	average number of carpets
26%	reported shelter provides warmth in winter

Hazards

36%	reported exposed electrical cables at site
-----	--

Shelter Improvement

36%	reported making own improvements to their shelter
-----	---

Community Organisation

IDP committees

n/a	reported awareness of IDP committee(s)
-----	--

Complaints mechanism

n/a	reported awareness of complaints mechanism
-----	--

Protection

Family Separation

0%	reported hosting unaccompanied or separated minors
14%	reported that other family members intended to join them

Vulnerable groups

Pregnant / lactating women	20%	<div></div>
Chronically ill individual(s)	8%	<div></div>
Disabled individual(s)	4%	<div></div>
Female headed households	18%	<div></div>

Intentions

n/a	planned to move to a different location in next 3 months
-----	--

Restrictions

n/a	reported entry or exit restrictions during daylight hours
-----	---

Food Security and Coping Strategies

Reported access to food assistance

59%	accessed food assistance in past month
81%	received Public Distribution System (PDS) in past month

Top three food consumption coping strategies

Cheaper	82%	<div></div>
Smaller meals	68%	<div></div>
Less meals	62%	<div></div>

Top three reported livelihood coping strategies

Spent savings	12%	<div></div>
Debt	12%	<div></div>
Sold Assets	12%	<div></div>

WASH

Latrines and showers

100%	reported public or communal latrines
88%	public/communal latrines lockable from the inside
7%	public/communal latrines with functioning lighting

Top three reported methods of waste removal

Collected	98%	<div></div>
Communal bin	2%	<div></div>
n/a	n/a	

Reported drinking water sources

0%	connection inside the home to collective water storage
0%	connection inside the home to private water storage
100%	communal water tap outside the shelter

Access to water

9%	reported 24 consecutive hours without access to water in the past month
----	---

Household Income

20%	reported as being economically inactive
-----	---

Top three income sources*:

Humanitarian Aid	37%	<div></div>
No livelihood	20%	<div></div>
Agricultural labour	12%	<div></div>

*Households were asked to select all income sources within household.