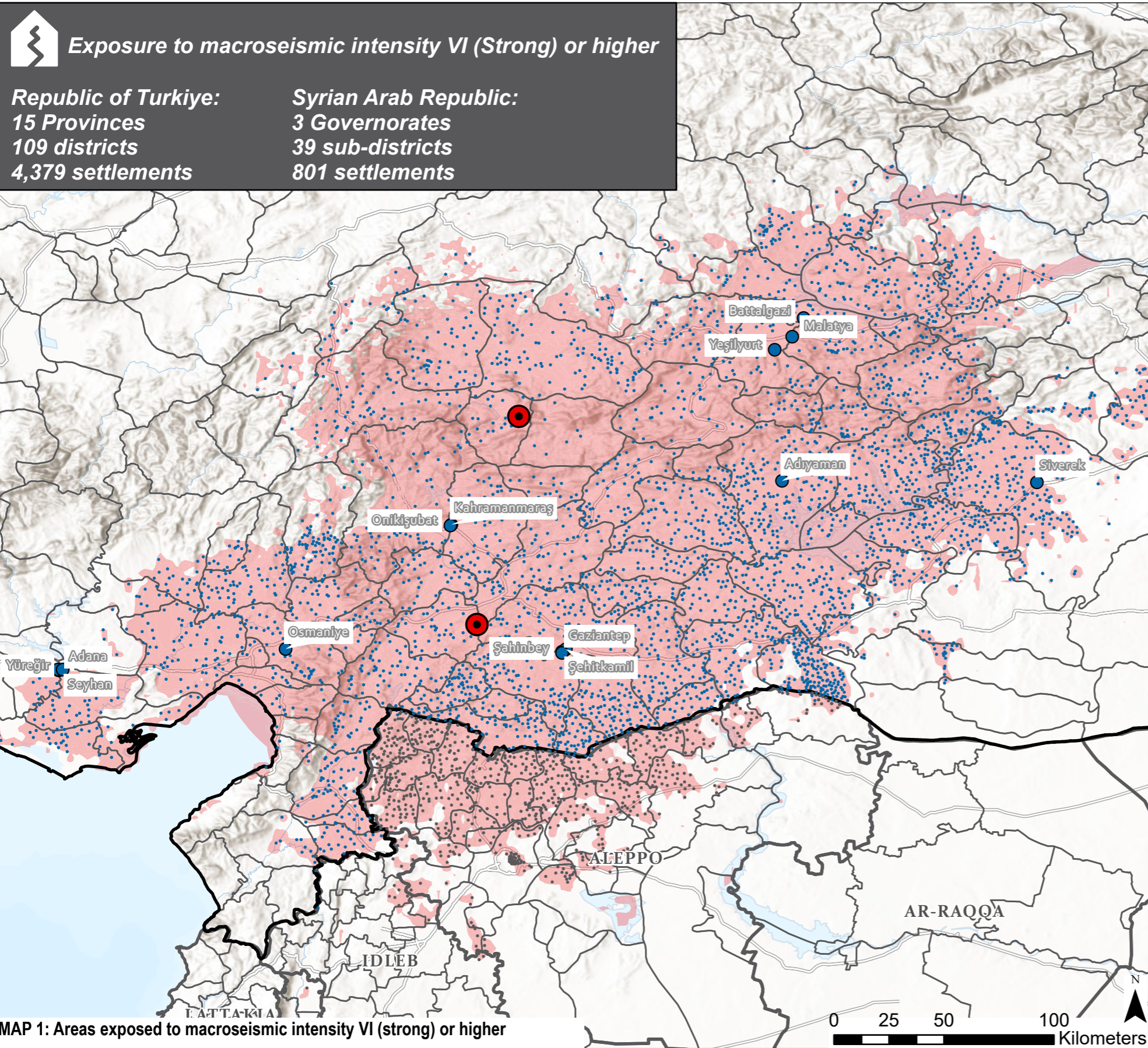


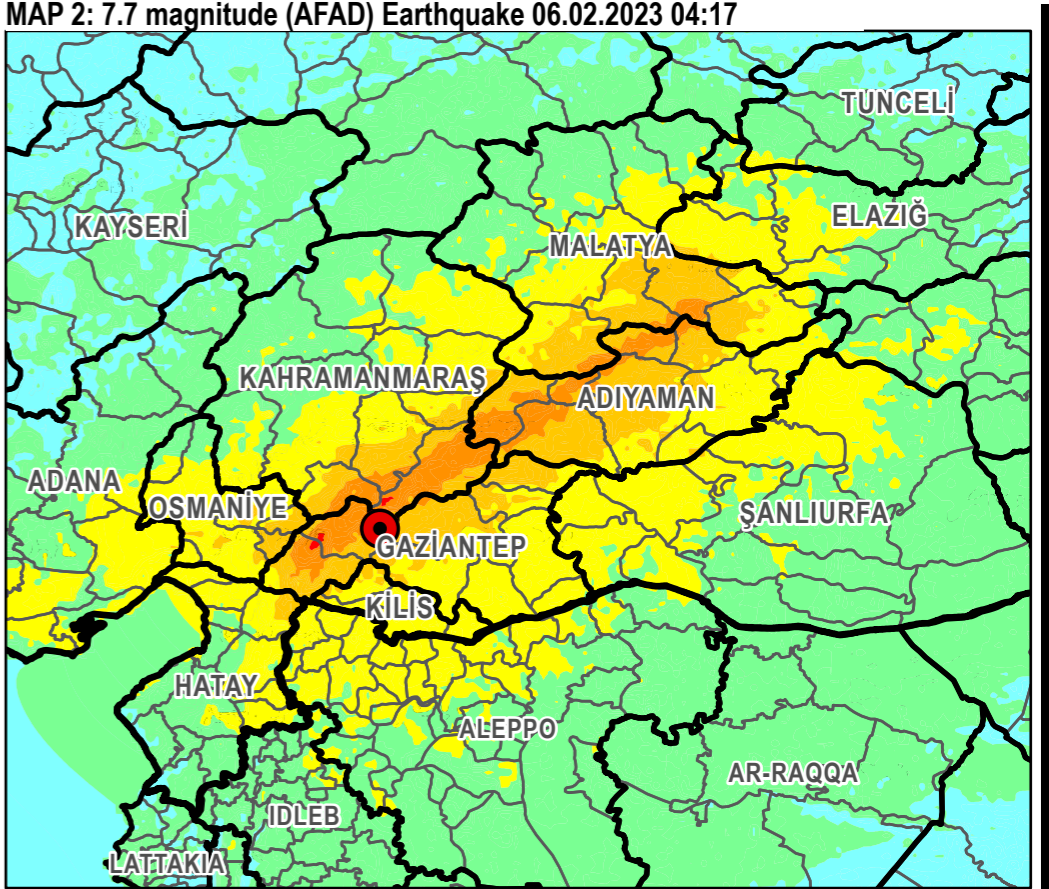
Türkiye - Syria Earthquake

Exposure to Macroseismic intensity VI (Strong) or higher - 06.02.2023

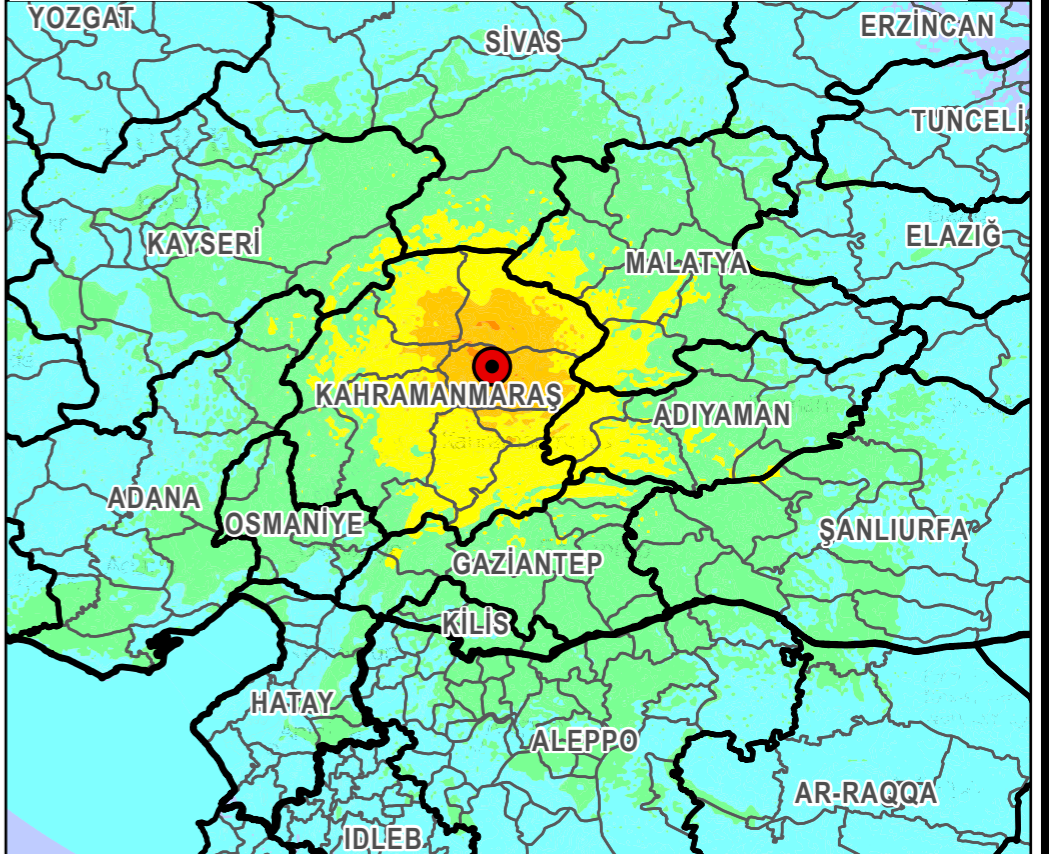
For Humanitarian Purposes Only
Production date : 07 Feb. 2023



MAP 1: Areas exposed to macroseismic intensity VI (strong) or higher



MAP 2: 7.7 magnitude (AFAD) Earthquake 06.02.2023 04:17



MAP 3: 7.6 magnitude (AFAD) Earthquake 06.02.2023 13:24

Legend

- Areas exposed to Macroseismic Intensity VI (Strong) or higher on 06.02.2023
- Earthquake Epicenter
- Syria Settlements
- Republic of Türkiye Settlements
- Major Cities - Türkiye

SHAKING	Not felt	Weak	Light	Moderate	Strong	Very strong	Severe	Violent	Extreme
DAMAGE	None	None	None	Very light	Light	Moderate	Moderate/heavy	Heavy	Very heavy
PGA(%g)	<0.0464	0.297	2.76	6.2	11.5	21.5	40.1	74.7	>139
PGV(cm/s)	<0.0215	0.135	1.41	4.65	9.64	20	41.4	85.8	>178
INTENSITY	I	II-III	IV	V	VI	VII	VIII	IX	X+

Scale based on Worden et al. (2012) - USGS

Data sources:
Administrative Boundaries - OCHA HDX
Seismic intensity - USGS
Esri, HERE, Garmin, FAO, NOAA, USGS, Esri, USGS
Coordinate System:
Contact: reach.mapping@impact-initiatives.org
Note: Data, designations and boundaries contained on this map are not warranted to be error-free and do not imply acceptance by IMPACT partners, associates or donors mentioned on this map.