

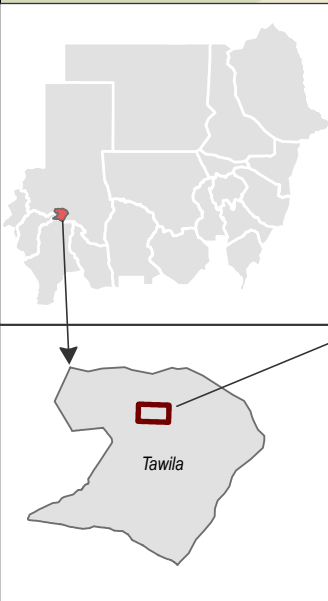
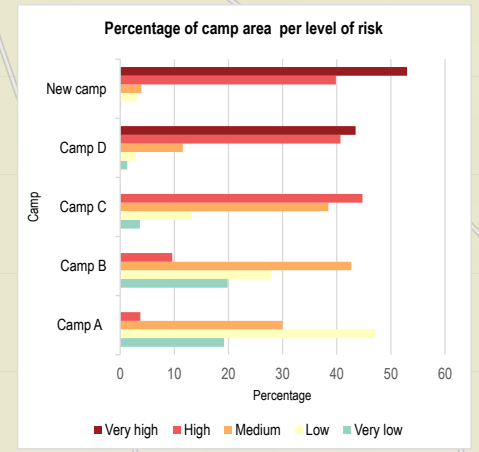
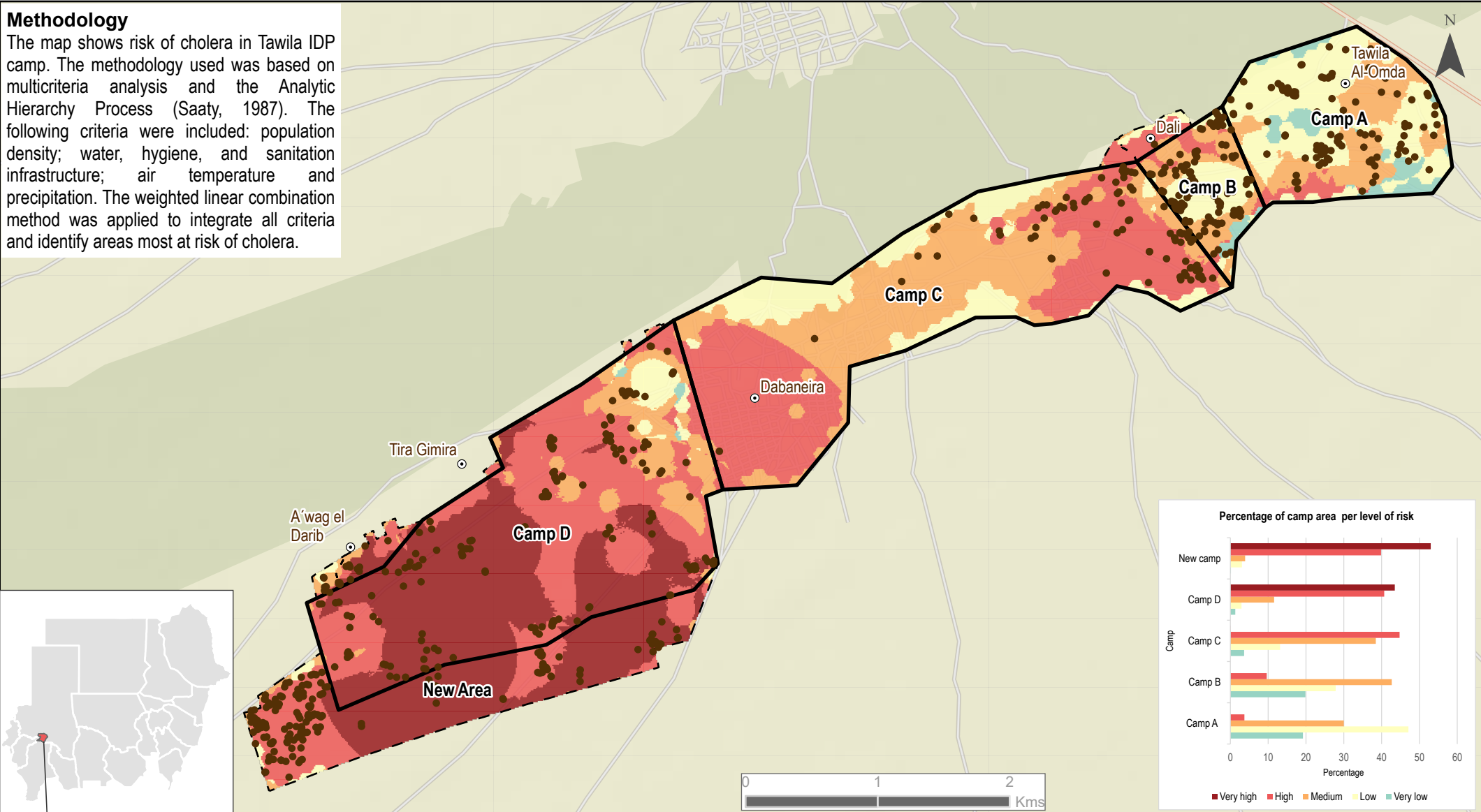
REPUBLIC OF SUDAN-North Darfur

Cholera risk analysis, Tawila IDP Camp

For humanitarian purpose only
Production date September 10, 2025

Methodology

The map shows risk of cholera in Tawila IDP camp. The methodology used was based on multicriteria analysis and the Analytic Hierarchy Process (Saaty, 1987). The following criteria were included: population density; water, hygiene, and sanitation infrastructure; air temperature and precipitation. The weighted linear combination method was applied to integrate all criteria and identify areas most at risk of cholera.



Cholera risk level

- Very low
- Low
- Medium
- High
- Very high
- Confirmed cholera cases
- Settlement
- Camp boundary
- New Area (August 2025)

Data sources:
 Satellite data : SkySatCollect, Resolution: 50 cm, 17 June 2025 and 27 July 2025;
 PlanetScope, Resolution 3m, 05 August 2025;
 Settlement data : OSM;
 WASH infrastructure: NRC, August 2025;
 Confirmed cholera cases: Solidarités International, August 2025;
 Air temperature: NASA;
 Rainfall data: USGS.

Coordinate System: GCS WGS 1984
 Contact: olatondji.chabi@impact-initiatives.org
 File: Impact-Initiatives_SDN_Map_Cholera risk analysis_Tawila_September_2025_A4

Note: Data, designations and boundaries contained on this map are not warranted to be error-free and do not imply acceptance by Impact Initiatives partners, associates or donors mentioned on this map.



Funded by US Department of State