

**6,580** buildings total\*

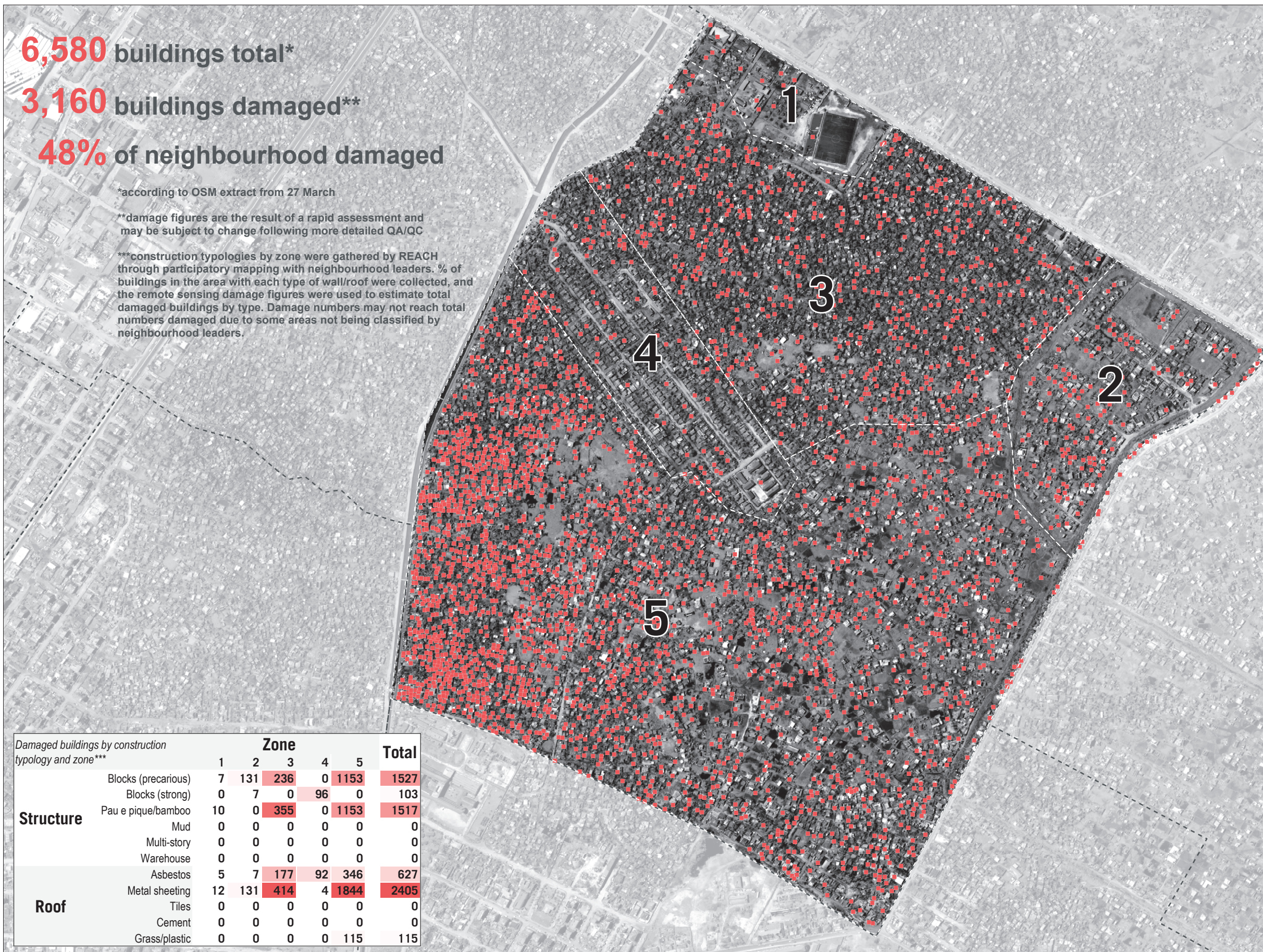
**3,160** buildings damaged\*\*

**48%** of neighbourhood damaged

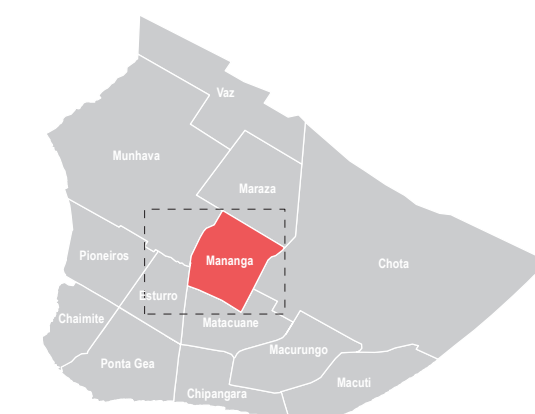
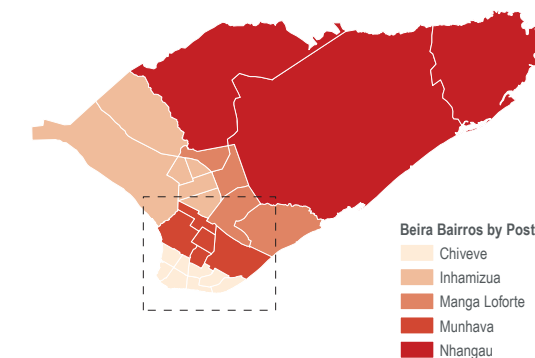
\*according to OSM extract from 27 March

\*\*damage figures are the result of a rapid assessment and may be subject to change following more detailed QA/QC

\*\*\*construction typologies by zone were gathered by REACH through participatory mapping with neighbourhood leaders. % of buildings in the area with each type of wall/roof were collected, and the remote sensing damage figures were used to estimate total damaged buildings by type. Damage numbers may not reach total numbers damaged due to some areas not being classified by neighbourhood leaders.



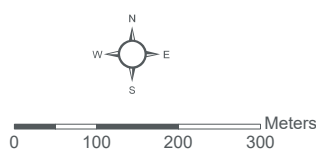
Damaged buildings by construction typology and zone***		Zone					Total
		1	2	3	4	5	
<b>Structure</b>	Blocks (precarious)	7	131	236	0	1153	1527
	Blocks (strong)	0	7	0	96	0	103
	Pau e pique/bamboo	10	0	355	0	1153	1517
	Mud	0	0	0	0	0	0
	Multi-story	0	0	0	0	0	0
	Warehouse	0	0	0	0	0	0
<b>Roof</b>	Asbestos	5	7	177	92	346	627
	Metal sheeting	12	131	414	4	1844	2405
	Tiles	0	0	0	0	0	0
	Cement	0	0	0	0	0	0
	Grass/plastic	0	0	0	0	115	115



Data sources:  
Damage sites - UNOSAT-REACH  
Beira Bairros - INGC  
Bairros Delineation - REACH  
Administrative Boundaries (0-3) - OCHA  
Satellite Imagery: WorldView-2 from 26 March 2019  
Copyright: ©DigitalGlobe 2019  
Source: US Dept of State Humanitarian Information Unit, NextView License

### Legend

- Damaged Buildings
- Bairros



Coordinate System: GCS WGS 1984  
File: MOZ\_Map\_Cycloneldai\_Beira\_DamageByType\_Mananga\_30APR2019  
Contact: reach.mapping@impact-initiatives.org

Note: Data, designations and boundaries contained on this map are not warranted to be error-free and do not imply acceptance by the REACH partners, associated, donors mentioned on this map.



Funded by  
European Union  
Civil Protection and  
Humanitarian Aid