



Camp Profile: Baharka

Erbil governorate, Iraq
August 2018

Management agency: BCF

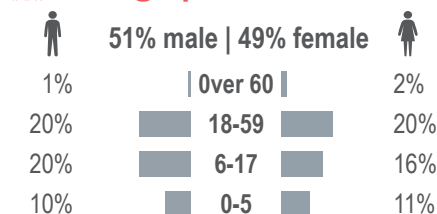
Summary

This profile provides an overview of conditions in Baharka camp. Primary data was collected through 68 randomly sampled household surveys between 2 July and 7 August 2018. Findings are statistically representative at the camp level with a 90% confidence level and 10% margin of error, with target sample sizes based on population figures provided by camp managers.¹ Additional information from camp managers has been used to support findings.

Camp Overview

Number of individuals: 4,656²
Number of households: 915²
Date opened: 11/14/2014
Main shelter type: Tent
Planned capacity: 1,303
Camp area: 307,271m²

Demographics

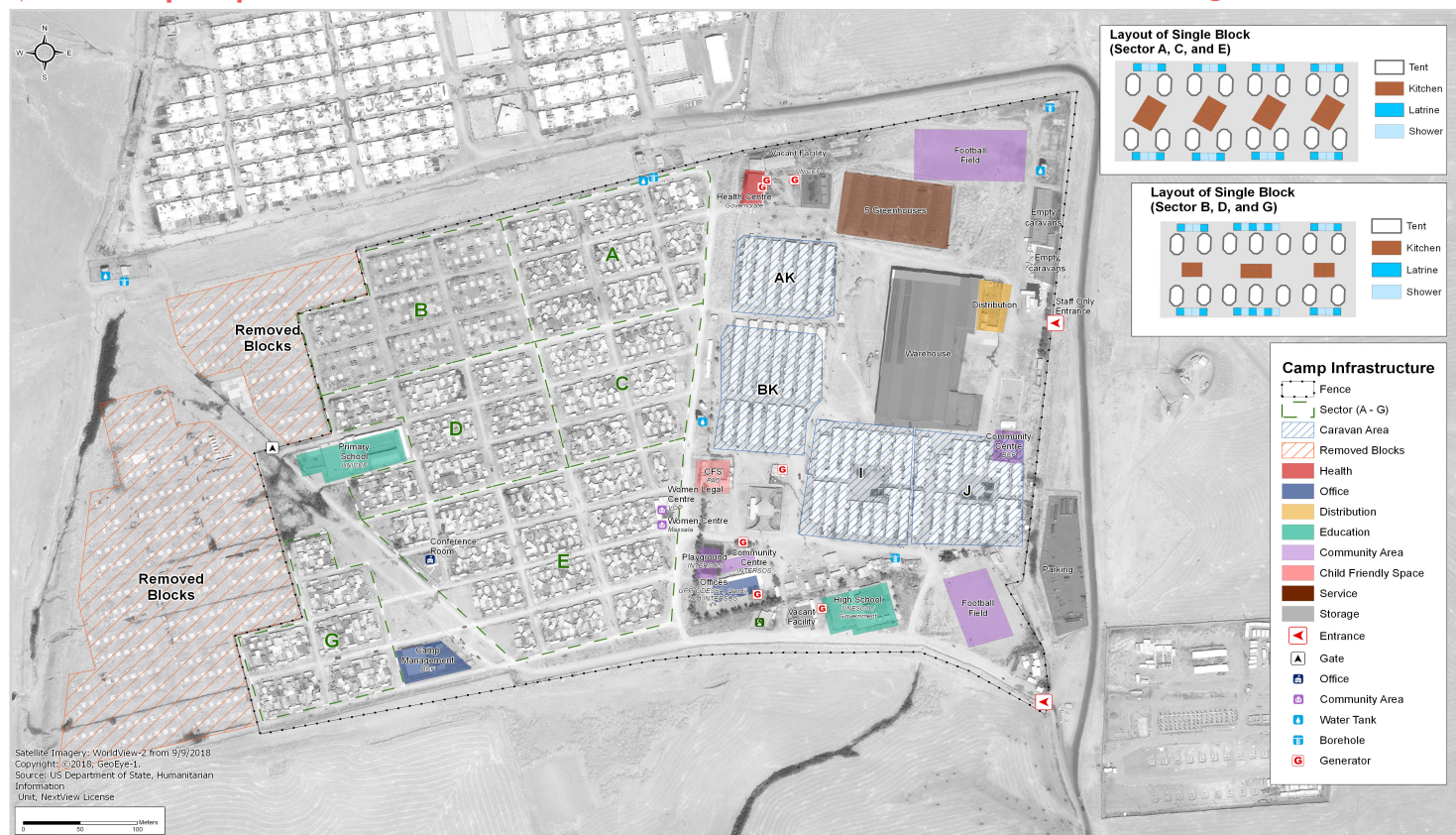


Location Map



IDP Camp Map - Baharka

Lat. 36° 17' 40.022" N Long. 43° 59' 39.655" E



Sectoral Minimum Standards

		Target	Previous Round	Current Round	
Education	% of children aged 6-11 attending formal school	100%	77%	80%	●
	% of children aged 12-17 attending formal school	100%	63%	60%	●
Food	% of households accessing Public Distribution Systems (PDS) in the month prior to data collection ³	100%	2%	36%	●
Health	Health services are available on-site or within walking distance (less than 5km)	Yes	Yes	Yes	●
CCCM	Average open area per household	min. 30m ²	360m ²	251m ²	●
Protection	% of households reported having at least one member with lost, damaged or expired documentation	0%	7%	22%	●
Shelter	Average covered area per person	min 3.5m ²	5.4m ²	5.3m ²	●
	Average number of individuals per shelter	max 5	4	4	●
WASH	# of persons per latrine	max. 20	2	4	●
	# of persons per shower	max. 20	2	4	●
	Frequency of solid waste disposal at least weekly	min. weekly	Yes	Yes	●

Targets based on minimum standards agreed with the CCCM Cluster, Iraq. Findings based on household-level data, enumerator field observations, and camp management documentation.

● Minimum standard reached, ● 50-99% of minimum standard reached, ● Less than 50% of minimum standard reached or not at all.

¹Findings of a subset of the population may have a wider margin of error, with anything below a minimum confidence level of 90% and a margin of error of 10% considered indicative.

²Camp population and household figures from CCCM camp managers at time of data collection. The camp population as of September 2018 is 937 households and 4,843 individuals according to national CCCM cluster figures.

³PDS rations do not necessarily include the full basket provided by the WFP Family Food Parcel or equivalent.



CCCM CLUSTER
SUPPORTING DISPLACED COMMUNITIES

REACH
Informing more effective humanitarian action



Camp Profile: Baharka



Protection and Intentions

Vulnerable Groups

Proportion of population identified as vulnerable:

18% Pregnant/lactating women 5% Individuals with disabilities
9% Chronically ill individuals 26% Female-headed households

Movement Intentions

80% of households listed safety and security in their AoO as a priority need in order to return.

Freedom of Movement

100% reported being able to leave the camp temporarily (e.g. to go to the market for livelihood opportunities).



Information and Priority Needs

Top three information needs:^{*}

Finding job opportunities 43%
Information about returns 41%
Accessing humanitarian assistance 31%

Top three reported priority needs:^{*}

Food 69%
Employment 37%
Water 37%



Shelter and NFIs

Of the 69% that reported concerns with their shelter, the top three needs were:^{*4}

Improve safety and security 61%
Protection from hazards 50%
Weather protection 41%

Of the 96% that reported NFI needs, the top three were:^{*}

Mattresses/sleeping mats 44%
Water storage 39%
Soft bedding items 34%



Education

Reported attendance rates of formal education by age and sex:

82% male | 59% female
83% 6 - 11 77%
81% 12 - 17 33%

Of the 43% of households that reported their children **did not receive education** in the 30 days prior to data collection, the top three barriers included:^{*4}

- Child disinterested
- Child disabled
- Cannot afford to pay

^{*}Respondents could select multiple needs or reasons. Therefore, results may exceed 100%.

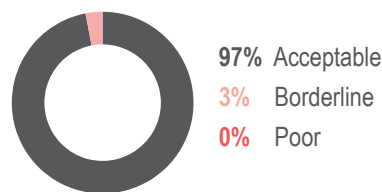
^{*4}Findings are based on a small subset of the sample population and are therefore considered indicative rather than statistically generalizable to all in-camp households.

⁵Food consumption score calculated according to United Nations World Food Programme most recent technical guidelines, as of February 2008.



Food Security and Livelihoods

Household Food Consumption Score (FCS)⁵



Food Consumption Coping Strategies

82% of households reported using some form of consumption-based coping strategy in the 30 days prior to data collection. The most common of which were:^{*}

Buy food on credit 75%
Spend savings 64%
Sell assets 45%

Household Income and Expenditure

Median monthly household income: 210,000 IQD (176 USD)^{6,7}

Median monthly expenditure per household: 237,000 IQD (199 USD)⁶

25% of adults reported working in the 30 days prior to data collection.

Top three household income sources:^{*7}

NGO/charity assistance 79%
Employment 54%
Loans/debts 34%

Top three monthly household expenditures:^{*}

Food 55%
Electricity 12%
Medical care 9%



WASH

Primary source of drinking water over the 7 days prior to data collection:^{*}

Network (private access) 100%

1% of households had access to public or communal latrines, and 99% had access to private latrines.^{*}

88% of households reported communal bins as their main method of waste disposal.



Health

Of the 47% of households who required healthcare services in the three months prior to data collection, 72% reported facing barriers to access, with the top three barriers including:^{*4}

- High cost of healthcare
- High cost of medicines
- No medicine in pharmacy

⁶Exchange rate of 1 USD: 1192.3 IQD, sourced from [xe.com](https://www.xe.com) at 7/2/2018.

⁷Income includes multiple sources such as employment, savings, selling assistance, and receiving assistance.





Camp Profile: Debaga 1

Erbil governorate, Iraq
August 2018

Management agency: BCF

Summary

This profile provides an overview of conditions in Debaga 1 camp. Primary data was collected through 70 randomly sampled household surveys between 2 July and 7 August 2018. Findings are statistically representative at the camp level with a 90% confidence level and 10% margin of error, with target sample sizes based on population figures provided by camp managers.¹ Additional information from camp managers has been used to support findings.

Camp Overview

Number of individuals: 9,084²

Number of households: 1,695²

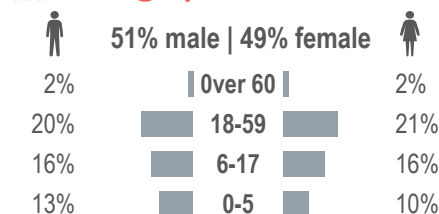
Date opened: 7/15/2016

Main shelter type: Residential unit

Planned capacity: 1,798

Camp area: 277,731m²

Demographics

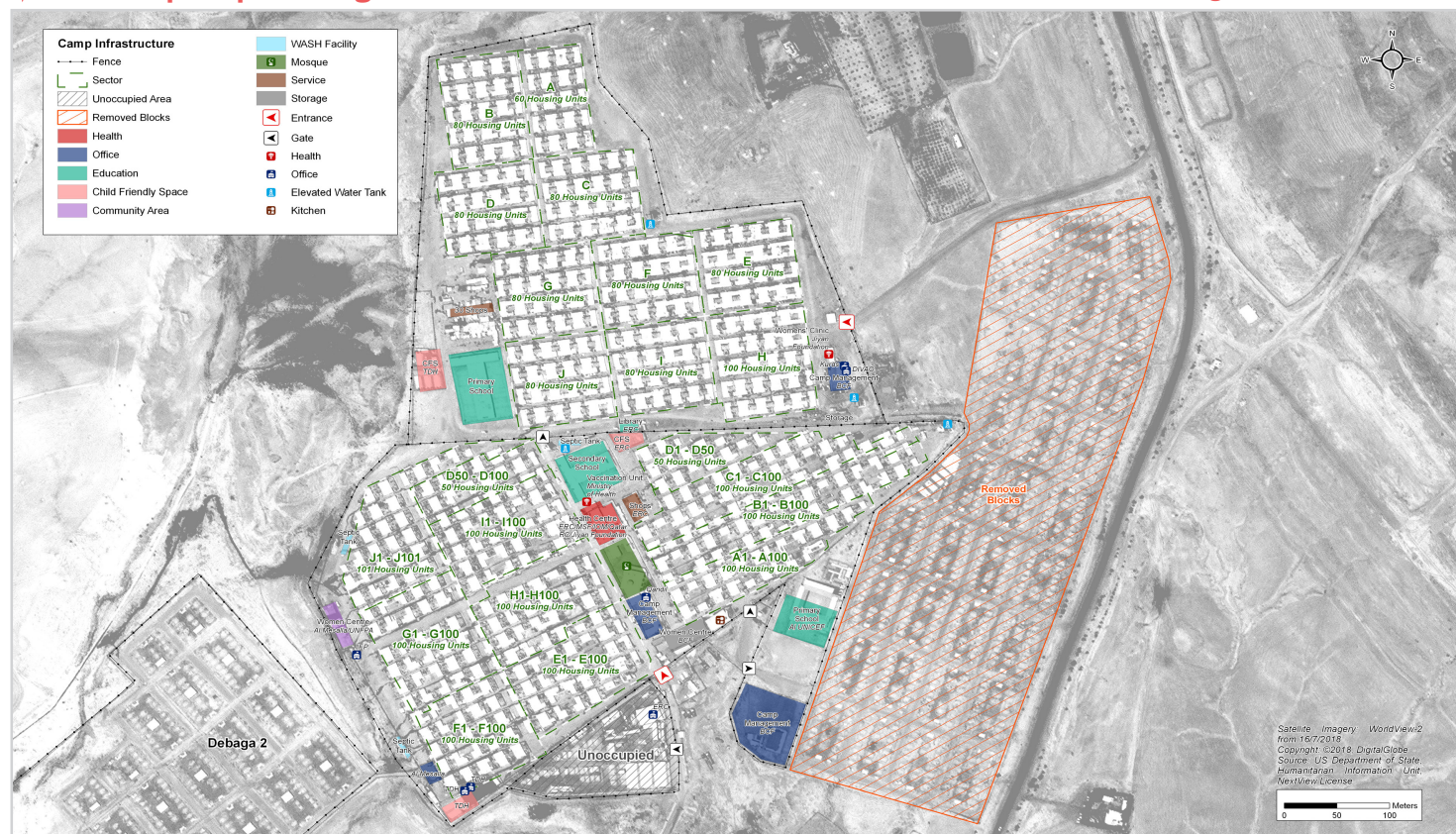


Location Map



IDP Camp Map - Debaga 1

Lat. 35° 52' 56.374" N Long. 43° 48' 32.748" E



Sectoral Minimum Standards

		Target	Previous Round	Current Round	
Education	% of children aged 6-11 attending formal school	100%	72%	92%	●
	% of children aged 12-17 attending formal school	100%	38%	59%	●
Food	% of households accessing Public Distribution Systems (PDS) in the month prior to data collection ³	100%	41%	55%	●
Health	Health services are available on-site or within walking distance (less than 5km)	Yes	Yes	Yes	●
CCCM	Average open area per household	min. 30m ²	122m ²	120m ²	●
Protection	% of households reported having at least one member with lost, damaged or expired documentation	0%	6%	6%	●
Shelter	Average covered area per person	min 3.5m ²	6m ²	5.6m ²	●
	Average number of individuals per shelter	max 5	5	5	●
WASH	# of persons per latrine	max. 20	5	5	●
	# of persons per shower	max. 20	5	5	●
	Frequency of solid waste disposal at least weekly	min. weekly	Yes	Yes	●

Targets based on minimum standards agreed with the CCCM Cluster, Iraq. Findings based on household-level data, enumerator field observations, and camp management documentation.

● Minimum standard reached, ● 50-99% of minimum standard reached, ● Less than 50% of minimum standard reached or not at all.

¹Findings of a subset of the population may have a wider margin of error, with anything below a minimum confidence level of 90% and a margin of error of 10% considered indicative.

²Camp population and household figures from CCCM camp managers at time of data collection. The camp population as of September 2018 is 1,754 households and 9,314 individuals according to national CCCM cluster figures.

³PDS rations do not necessarily include the full basket provided by the WFP Family Food Parcel or equivalent.



CCCM CLUSTER
SUPPORTING DISPLACED COMMUNITIES

REACH
Informing more effective humanitarian action



Camp Profile: Debaga 1



Protection and Intentions

Vulnerable Groups

Proportion of population identified as vulnerable:

16% Pregnant/lactating women **5%** Individuals with disabilities
6% Chronically ill individuals **20%** Female-headed households

Movement Intentions

73% of households listed rehabilitation of homes in their AoO as a priority need in order to return.

Freedom of Movement

88% reported being able to leave the camp temporarily (e.g. to go to the market for livelihood opportunities).



Information and Priority Needs

Top three information needs:^{*}

Finding job opportunities **45%**
Accessing humanitarian assistance **43%**
Information about returns **28%**

Top three reported priority needs:^{*}

Food **59%**
Employment **48%**
Clothing or footwear **32%**



Shelter and NFIs

Of the 23% that reported concerns with their shelter, the top three needs were:^{*4}

Improve safety and security **100%**
Weather protection **50%**
Protection from hazards **50%**

Of the 93% that reported NFI needs, the top three were:^{*4}

Mattresses/sleeping mats **66%**
Soft bedding items **55%**
Blankets **50%**



Education

Reported attendance rates of formal education by age and sex:

88% male | 72% female

95% **6 - 11** **88%**
75% **12 - 17** **41%**

Of the **32%** of households that reported their children **did not receive education** in the 30 days prior to data collection, the top three barriers included:^{*4}

- Child disinterested
- Education considered not important
- Security situation

^{*}Respondents could select multiple needs or reasons. Therefore, results may exceed 100%.

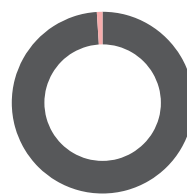
⁴Findings are based on a small subset of the sample population and are therefore considered indicative rather than statistically generalizable to all in-camp households.

⁵Food consumption score calculated according to United Nations World Food Programme most recent technical guidelines, as of February 2008.



Food Security and Livelihoods

Household Food Consumption Score (FCS)⁵



99% Acceptable
1% Borderline
0% Poor

Food Consumption Coping Strategies

62% of households reported using some form of consumption-based coping strategy in the 30 days prior to data collection. The most common of which were:^{*}

Buy food on credit **77%**
Spend savings **44%**
Sell assets **35%**

Household Income and Expenditure

Median monthly household income: **172,500 IQD (145 USD)^{6,7}**

Median monthly expenditure per household: **187,000 IQD (157 USD)⁶**

27% of adults reported working in the 30 days prior to data collection.

Top three household income sources:^{*7}

NGO/charity assistance **77%**
Employment **61%**
Loans/debts **26%**

Top three monthly household expenditures:^{*}

Food **68%**
Electricity **8%**
Transport **7%**



WASH

Top two primary sources of drinking water over the 7 days prior to data collection:^{*}

Network (private access) **88%**
Network (communal access) **12%**

0% of households had access to public or communal latrines, and 100% had access to private latrines.^{*}

90% of households reported collection services as their main method of waste disposal.



Health

Of the 45% of households who required healthcare services in the three months prior to data collection, **61% reported facing barriers to access**, with the top three barriers including:^{*4}

- High cost of healthcare
- High cost of medicines
- No medicine in pharmacy

⁶Exchange rate of 1 USD: 1192.3 IQD, sourced from xe.com at 7/2/2018.

⁷Income includes multiple sources such as employment, savings, selling assistance, and receiving assistance.





Camp Profile: Debaga 2

Erbil governorate, Iraq
August 2018

Management agency: BCF

Summary

This profile provides an overview of conditions in Debaga 2 camp. Primary data was collected through 52 randomly sampled household surveys between 2 July and 7 August 2018. Findings are statistically representative at the camp level with a 90% confidence level and 10% margin of error, with target sample sizes based on population figures provided by camp managers.¹ Additional information from camp managers has been used to support findings.

Camp Overview

Number of individuals: 938²

Number of households: 165²

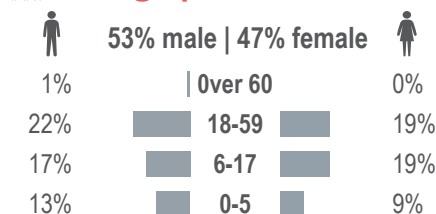
Date opened: 8/1/2014

Main shelter type: Tent

Planned capacity: 250

Camp area: 435,404m²

Demographics



Location Map



IDP Camp Map - Debaga 2

Lat. 35° 52' 30.511" N Long. 43° 47' 59.513" E



Sectoral Minimum Standards

		Target	Previous Round	Current Round	
Education	% of children aged 6-11 attending formal school	100%	75%	93%	●
	% of children aged 12-17 attending formal school	100%	44%	80%	●
Food	% of households accessing Public Distribution Systems (PDS) in the month prior to data collection ³	100%	33%	38%	●
Health	Health services are available on-site or within walking distance (less than 5km)	Yes	Yes	Yes	●
CCCM	Average open area per household	min. 30m ²	1,789m ²	2,499m ²	●
Protection	% of households reported having at least one member with lost, damaged or expired documentation	0%	4%	10%	●
Shelter	Average covered area per person	min 3.5m ²	3.7m ²	3.3m ²	●
	Average number of individuals per shelter	max 5	4	4	●
WASH	# of persons per latrine	max. 20	4	10	●
	# of persons per shower	max. 20	4	10	●
	Frequency of solid waste disposal at least weekly	min. weekly	Yes	Yes	●

Targets based on minimum standards agreed with the CCCM Cluster, Iraq. Findings based on household-level data, enumerator field observations, and camp management documentation.

● Minimum standard reached, ● 50-99% of minimum standard reached, ● Less than 50% of minimum standard reached or not at all.

¹Findings of a subset of the population may have a wider margin of error, with anything below a minimum confidence level of 90% and a margin of error of 10% considered indicative.

²Camp population and household figures from CCCM camp managers at time of data collection. The camp population as of September 2018 is 190 households and 1,109 individuals according to national CCCM cluster figures.

³PDS rations do not necessarily include the full basket provided by the WFP Family Food Parcel or equivalent.



Camp Profile: Debaga 2



Protection and Intentions

Vulnerable Groups

Proportion of population identified as vulnerable:

22% Pregnant/lactating women 3% Individuals with disabilities
7% Chronically ill individuals 15% Female-headed households

Movement Intentions

77% of households listed safety and security in their AoO as a priority need in order to return.

Freedom of Movement

88% reported being able to leave the camp temporarily (e.g. to go to the market for livelihood opportunities).



Information and Priority Needs

Top three information needs:^{*}

Finding job opportunities 56%
Information about returns 34%
Accessing humanitarian assistance 32%

Top three reported priority needs:^{*}

Employment 56%
Food 52%
Shelter support 48%



Shelter and NFIs

Of the 71% that reported concerns with their shelter, the top three needs were:^{*4}

Improve safety and security 73%
Improve basic utilities 54%
Protection from hazards 49%

Of the 94% that reported NFI needs, the top three were:^{*4}

Mattresses/sleeping mats 65%
Soft bedding items 51%
Blankets 41%



Education

Reported attendance rates of formal education by age and sex:

89% male | 87% female
100% 6 - 11 88%
76% 12 - 17 85%

Of the 25% of households that reported their children **did not receive education** in the 30 days prior to data collection, the top three barriers included:^{*4}

- Child disinterested
- Child stays at home to assist with household chores
- No space in school

^{*}Respondents could select multiple needs or reasons. Therefore, results may exceed 100%.

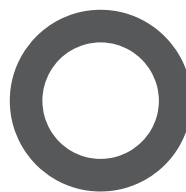
^{*4}Findings are based on a small subset of the sample population and are therefore considered indicative rather than statistically generalizable to all in-camp households.

⁵Food consumption score calculated according to United Nations World Food Programme most recent technical guidelines, as of February 2008.



Food Security and Livelihoods

Household Food Consumption Score (FCS)⁵



100% Acceptable
0% Borderline
0% Poor

Food Consumption Coping Strategies

63% of households reported using some form of consumption-based coping strategy in the 30 days prior to data collection. The most common of which were:^{*}

Buy food on credit 76%
Sell assets 42%
Spend savings 39%

Household Income and Expenditure

Median monthly household income: 140,000 IQD (117 USD)^{6,7}

Median monthly expenditure per household: 149,000 IQD (125 USD)⁶

21% of adults reported working in the 30 days prior to data collection.

Top three household income sources:^{*7}

NGO/charity assistance 81%
Employment 40%
Loans/debts 21%

Top three monthly household expenditures:^{*}

Food 74%
Healthcare 9%
NFIs 5%



WASH

Primary source of drinking water over the 7 days prior to data collection:^{*}

Network (communal access) 100%

98% of households had access to public or communal latrines, and 2% had access to private latrines.^{*}

77% of households reported collection services as their main method of waste disposal.



Health

Of the 42% of households who required healthcare services in the three months prior to data collection, 64% reported facing barriers to access, with the top three barriers including:^{*4}

- High cost of healthcare
- No medicine in pharmacy
- High cost of medicines

⁶Exchange rate of 1 USD: 1192.3 IQD, sourced from xe.com at 7/2/2018.

⁷Income includes multiple sources such as employment, savings, selling assistance, and receiving assistance.





Camp Profile: Harshm

Erbil governorate, Iraq
August 2018

Management agency: BCF

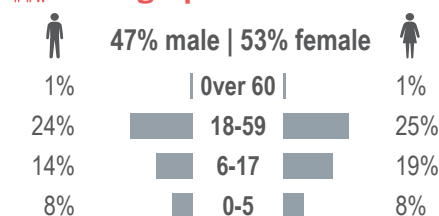
Summary

This profile provides an overview of conditions in Harshm camp. Primary data was collected through 59 randomly sampled household surveys between 2 July and 7 August 2018. Findings are statistically representative at the camp level with a 90% confidence level and 10% margin of error, with target sample sizes based on population figures provided by camp managers.¹ Additional information from camp managers has been used to support findings.

Camp Overview

Number of individuals: 1,502²
Number of households: 298²
Date opened: 4/12/2017
Main shelter type: Caravan
Planned capacity: 300
Camp area: 63,205m²

Demographics



Location Map



IDP Camp Map - Harshm

Lat. 36° 15' 22.625" N Long. 43° 59' 41.865" E



Sectoral Minimum Standards

		Target	Previous Round	Current Round	
Education	% of children aged 6-11 attending formal school	100%	84%	87%	●
	% of children aged 12-17 attending formal school	100%	65%	67%	●
Food	% of households accessing Public Distribution Systems (PDS) in the month prior to data collection ³	100%	3%	39%	●
Health	Health services are available on-site or within walking distance (less than 5km)	Yes	Yes	Yes	●
CCCM	Average open area per household	min. 30m ²	268m ²	161m ²	●
Protection	% of households reported having at least one member with lost, damaged or expired documentation	0%	6%	12%	●
Shelter	Average covered area per person	min 3.5m ²	5.6m ²	5.6m ²	●
	Average number of individuals per shelter	max 5	5	5	●
WASH	# of persons per latrine	max. 20	5	6	●
	# of persons per shower	max. 20	5	6	●
	Frequency of solid waste disposal at least weekly	min. weekly	Yes	Yes	●

Targets based on minimum standards agreed with the CCCM Cluster, Iraq. Findings based on household-level data, enumerator field observations, and camp management documentation.

● Minimum standard reached, ● 50-99% of minimum standard reached, ● Less than 50% of minimum standard reached or not at all.

¹ Findings of a subset of the population may have a wider margin of error, with anything below a minimum confidence level of 90% and a margin of error of 10% considered indicative.

² Camp population and household figures from CCCM camp managers at time of data collection. The camp population as of September 2018 is 302 households and 1,496 individuals according to national CCCM cluster figures.

³ PDS rations do not necessarily include the full basket provided by the WFP Family Food Parcel or equivalent.



CCCM CLUSTER
SUPPORTING DISPLACED COMMUNITIES

REACH
Informing more effective humanitarian action



Camp Profile: Harshm



Protection and Intentions

Vulnerable Groups

Proportion of population identified as vulnerable:

16% Pregnant/lactating women **2%** Individuals with disabilities
11% Chronically ill individuals **22%** Female-headed households

Movement Intentions

70% of households listed safety and security in their AoO as a priority need in order to return.

Freedom of Movement

88% reported being able to leave the camp temporarily (e.g. to go to the market for livelihood opportunities).



Information and Priority Needs

Top three information needs:^{*}

Finding job opportunities **49%**
Accessing humanitarian assistance **44%**
Information about returns **28%**

Top three reported priority needs:^{*}

Food **54%**
Shelter support **39%**
Employment **37%**



Shelter and NFIs

Of the 78% that reported concerns with their shelter, the top three needs were:^{*4}

Improve safety and security **63%**
Weather protection **54%**
Improve privacy and dignity **48%**

Of the 93% that reported NFI needs, the top three were:^{*4}

Mattresses/sleeping mats **51%**
Soft bedding items **35%**
Air water cooler **35%**



Education

Reported attendance rates of formal education by age and sex:

80% male | 77% female

91% **6 - 11** **84%**
67% **12 - 17** **67%**

Of the **53%** of households that reported their children **did not receive education** in the 30 days prior to data collection, the top three barriers included:^{*4}

- Child disinterested
- Child disabled
- Education considered not important

^{*}Respondents could select multiple needs or reasons. Therefore, results may exceed 100%.

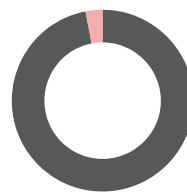
^{*4}Findings are based on a small subset of the sample population and are therefore considered indicative rather than statistically generalizable to all in-camp households.

^{*}Food consumption score calculated according to United Nations World Food Programme most recent technical guidelines, as of February 2008.



Food Security and Livelihoods

Household Food Consumption Score (FCS)⁵



97% Acceptable
3% Borderline
0% Poor

Food Consumption Coping Strategies

76% of households reported using some form of consumption-based coping strategy in the 30 days prior to data collection. The most common of which were:^{*}

Spend savings **60%**
Sell assets **60%**
Buy food on credit **53%**

Household Income and Expenditure

Median monthly household income: **180,000 IQD (151 USD)^{6,7}**

Median monthly expenditure per household: **210,000 IQD (176 USD)⁶**

25% of adults reported working in the 30 days prior to data collection.

Top three household income sources:^{*7}

NGO/charity assistance **66%**
Employment **59%**
Loans/debts **34%**

Top three monthly household expenditures:^{*}

Food **57%**
Electricity **9%**
Servicing debt **8%**



WASH

Primary source of drinking water over the 7 days prior to data collection:^{*}

Network (private access) **100%**

8% of households had access to public or communal latrines, and 92% had access to private latrines.^{*}

86% of households reported communal bins as their main method of waste disposal.



Health

Of the 49% of households who required healthcare services in the three months prior to data collection, **59% reported facing barriers to access**, with the top three barriers including:^{*4}

- High cost of healthcare
- No medicine in pharmacy
- Unqualified pharmacy staff

⁶Exchange rate of 1 USD: 1192.3 IQD, sourced from xe.com at 7/2/2018.

⁷Income includes multiple sources such as employment, savings, selling assistance, and receiving assistance.

